

USC EVC10 EV Charger

FLEXIBLE POWER FROM 3.5-19.2kW

Eniac Energy, LLC

USCharger.com



ISO15118 (Plug & Charge) for better charging experience

CTEP certification ensures metering accuracy and transparency

Cyber Security solution to protect the EVSE from hacking



| Model No. | EVC10/16AC | EVC10/22AC | EVC10/40AC | EVC10/48AC | EVC10/78AC | EVC10/88AC |
|-----------------------|--|------------|------------|-----------------------|------------|------------|
| Voltage | 208-240V90c | | | | | |
| Amperage/Power | 16A/3.8KW | 32A/7.6KW | 40A/9.6KW | 48A/11.5KW | 70A/16.8KW | 80A/19.2KW |
| AC Power Frequency | 50-60Hz | | | | | |
| Display | 4.3" LCD | | | | | |
| User Authentication | RFID (ISO14443) | | | | | |
| Connectivity | LAN standard, 4G or Wi-Fi optional OCPP1.6J / Upgradable to OCPP2.0.1 | | | | | |
| Operating Temperature | -22°F to 122°F | | | | | |
| IP Level | Type3 | | | | | |
| IK Rating | IK08 | | | | | |
| Cable Length | 18ft (25ft optional) | | | | | |
| Net Weight | 13.8lbs | 13.8lbs | 16.9lbs | 18.1lbs | 19.8lbs | 19.8lbs |
| Gross Weight | 16.1lbs | 16.1lbs | 19.0lbs | 20.3lbs | 22.5lbs | 22.5lbs |
| Product Dimensions | 13.8" x 9.8" x 5.1" | | | | | |
| Package Dimensions | 19.6" x 13.7" x 10.7" | | | 19.6" x 13.7" x 12.4" | | |

PAGE/08

POWERED BY USCharger

- **5-YEAR Turn-Key INSTALL**
- **SOFTWARE INTEGRATED**
- **SHORT LEAD TIMES**
- **MONTHLY AS A SERVICE OPTION**
- **EV PROGRAM COMPLIANT**

Quality Hardware with the versatility to be applied to a wide range of projects

Options

- ▶ 5-YEAR PRODUCT WARRANTY
- ▶ 5-YEAR SERVICE LEVEL WARRANTY
- ▶ 5-YEAR CELLULAR CONNECTIVITY
- ▶ 5-YEAR SOFTWARE LICENSES
- ▶ 5-YEAR TECH SUPPORT



White



Black



Socket version

CONTACT USCharger TODAY!

INFO@USCHARGER.COM

PHONE: 561-693-7511

ENIAC ENERGY LLC. Phone: 1-561-693-7511 Email: INFO@USCharger.com

Solutions...

FUTURE PROOFING

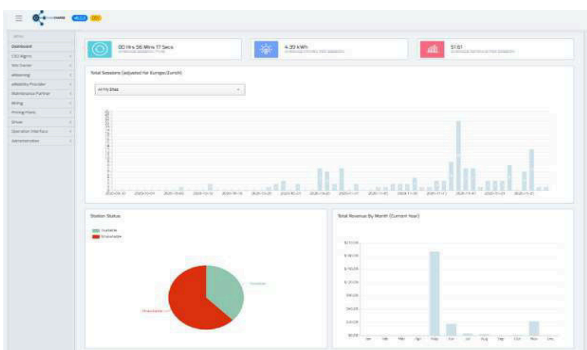
USChargersolutions are designed so that your charger network can be effortlessly scaled to grow when needed. The solutions are modular so you can start smaller and add power later. Simply add dispensers to the upgradable power cabinet over time and save on total project cost. This product is highly configurable with a range of charger sizes and possibilities.

POWER OPTIONS

16A/3.8kw - 32A/7.6kW - 40A/9.6kW - 48A/11.5kW
and 70A/16.8kW / 80A/19.2kW

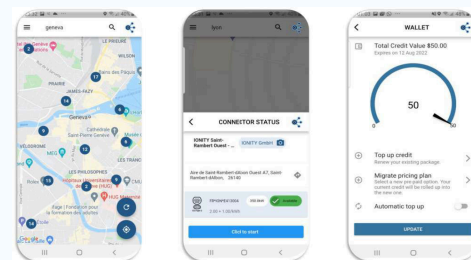
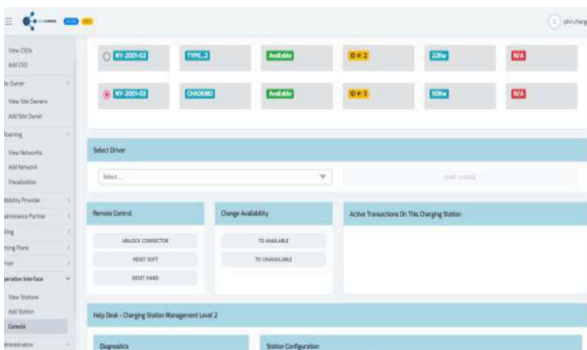
QUALITY & SERVICEABILITY

USChargerproducts are sturdy yet functional and are tested to last with even the roughest driver handling in the harshest environments. 90% of challenges can be solved with just 4 parts. With remote diagnostics, redundant architecture and modularity of parts, are simple to service.



INTEGRATED SOFTWARE

Our engineering team worked closely with manufactures for their entire product line-up. Software manages all power, billing and driver interaction and each comes with a 5-year software license.



NEVI ASSEMBLED IN AMERICA SKD

SEMI-KNOCK-DOWN KIT AVAILABLE TO MEET
USA MADE IN AMERICA 2023 REQUIREMENTS
THROUGH JULY 2024.

DATASHEET

| Model No. | EVC10/16AC | EVC10/32AC | EVC10/40AC | EVC10/48AC | EVC10/70AC | EVC10/80AC |
|-----------------------|---|------------|------------|------------|-----------------------|------------|
| Input Voltage | 208-240Vac | | | | | |
| Frequency | 50-60Hz | | | | | |
| Amperage | 16A | 32A | 40A | 48A | 70A | 80A |
| Max. Power Output | 3.8kW | 7.6kW | 9.6kW | 11.5kW | 16.8kW | 19.2kW |
| Net Weight | 13.8lbs | 13.8lbs | 16.8lbs | 18.1lbs | 19.8lbs | 19.8lbs |
| Gross Weight | 16.1lbs | 16.1lbs | 19.0lbs | 20.3lbs | 22.5lbs | 22.5lbs |
| Product Dimensions | 13.8" x 9.8" x 5.1" | | | | 13.8" x 9.8" x 5.1" | |
| Package Dimensions | 19.6" x 13.7" x 10.7" | | | | 19.6" x 13.7" x 12.4" | |
| Protection & Standard | | | | | | |
| Charging Interface | SAE J1772 Compliant, Type 1 Plug | | | | | |
| Safety Compliance | UL2594, UL2231-1/-2 | | | | | |
| Multiple Protection | UVP, OVP, RCD (CCID 20), SPD, Ground Fault Protection OCP, OTP, Control Pilot Fault Protection | | | | | |
| Environmental | | | | | | |
| Operating Temp. | -22°F to 122°F | | | | | |
| Relative Humidity | Up to 95% non-condensing | | | | | |
| Cable Length | 18ft Standard (25ft Optional with Surcharge) | | | | | |

ABOUT

USCharger designs, manufactures and commercializes charging solutions and services for electric vehicles and machines operating in the most demanding conditions.