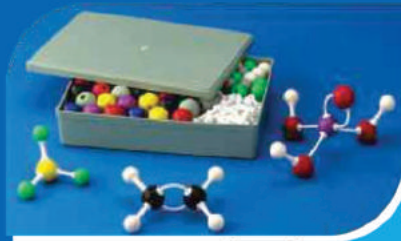




# AMP

MEDICOSE & EQUIPMENTS

Scientific | Laboratory  
Medical | Educational  
Instruments & Chemicals



## About Us

AMP Group is an Indian Manufacturer and Distributor of Scientific Laboratories, School, Educational Institute, Hospitals and Equipments.

Our extensive experience in manufacturing and product sourcing has enable us to quickly mobilize a supply chain of fully certified science and medical products. Our products range includes Microscopes, Laboratories, Glassware, Plasticware, Mathematic Kits, Atomic Models, Charts and many Medical Equipments.

Our aims to delight our customer and offer one stop shop for the scientific, laboratrical and research equipments.

We take pride in delivering as per desired quality and schedule. We often develop long term relationship with our clients. Our goal to enable our clients in achieving their business goal and work with them on multiple engagements.

## PLASTIC LABWARE

### ASPIRATOR BOTTLES

**Material :** Polypropylene  
**Capacity :** 1.5 Ltr., 05 Ltr., 10 Ltr., 20 Ltr.



### WASH BOTTLE WIDE MOUTH

**Material :** Low Density Polyethylene (L.D.P.E.)  
**Capacity :** 500 ML., 1000 ML.



### DROPPER BOTTLES (T. K. Type)

**Material :** Low Density Polyethylene (L.D.P.E.)  
**Colour :** Natural White, Translucent  
**Capacity :** 30 ML., 60 ML., 125 ML.



### NARROW MOUTH REAGENT BOTTLE

**Material :** Polyethylene  
**Capacity :** 30 ML., 60 ML., 125 ML., 250 ML., 500 ML., 1000 ML.



### DROPPER BOTTLES WITH LID

**Material :** Low Density Polyethylene (L.D.P.E.)  
**Colour :** Natural White, Translucent  
**Capacity :** 30 ML., 60 ML., 125 ML., 250 ML.



### WATER BOTTLE ANIMAL FEEDER

**Material :** Polyethylene (PP)  
**Capacity :** 125 ML., 250 ML.



### WASH BOTTLES

**Material :** Low Density Polyethylene (L.D.P.E.)  
**Capacity :** 125 ML., 250 ML., 500 ML., 1000 ML.



### CONICAL FLASK

**Material :** Polyethylene (PP)  
**Capacity :** 125 ML., 250 ML., 500 ML.



### WASH BOTTLES SIDE DISPENSOR

**Material :** Low Density Polyethylene (L.D.P.E.)  
**Capacity :** 125 ML., 250 ML., 500 ML.



### VOLUMETRIC FLASK

**Material :** Polyethylene (PP)  
**Capacity :** 25 ML., 50 ML., 100 ML., 250 ML., 500 ML., 1000 ML.



## PLASTIC LABWARE

### MEASURING CYLINDER

**Material :** Polypropylene (pp)  
**Capacity :** 10 ML., 25 ML., 50 ML.,  
 100 ML., 250 ML., 500 ML., 1000 ML.,  
 2000 ML.



### RETORT SATND

**Size :** 225x150 MM Side Hole  
 300x225 MM Center Hole



### MEASURING JUG

**Material :** Polypropylene (pp)  
**Capacity :** 250 ML., 500 ML., 1000 ML.,  
 2000 ML.



### BURETTE

**Material :** Polyethylene  
**Capacity :** 25 ML., 50 ML.



### MEASURING BEAKER

**Material :** Polypropylene (pp)  
**Capacity :** 50 ML., 100 ML., 250 ML.,  
 500 ML., 1000 ML., 2000 ML., 5000 ML.



### BURETTE CLAMP

**Material :** Polyethylene (PP)  
**Capacity :** Single, Double



### URINE / STOOL CONTAINER

**Material :** Polypropylene (PP)  
**Capacity :** 30 ML., 60 ML., 100 ML.



### FUNNEL HOLDER

**Material :** Polyethylene (PP)  
**Capacity :** Single



### RAIN GAUZE CYLINDER

**Material :** Polypropylene (PP & PS)  
**Capacity :** 200 ML.



### SEPARATORY FUNNEL HOLDER

**Material :** Polyethylene (PP)  
**Capacity :** Single



## PLASTIC LABWARE

### SEPARATORY FUNNEL

**Material :** Polypropylene (pp)  
**Capacity :** 100 ML., 250 ML., 500 ML.



### PETRI DISH REUSABLE

**Size :** 50 MM, 75 MM, 100 MM



### ANALYTICAL FUNNEL

**Material :** Polypropylene (pp)  
**Capacity :** 50 MM., 62 MM., 75 MM., 100 ML.



### PETRI DISH DISPOSABLE

**Material :** Polyethylene  
**Capacity :** 90 MM



### KIPP'S APPARATUS

**Material :** High Density Polypropylene (H.D.P.E.)  
**Capacity :** 250 ML., 500 ML., 1000 ML.



### MICRO CENTRIFUGE TUBE

**Material :** Polyethylene (PP)  
**Capacity :** 0.5 ML., 1.5 ML.



### DESICCATOR (PLAIN)

**Material :** Polypropylene (PP)  
**Capacity :** 150 ML., 200 ML., 250 ML., 300 ML.



### RIA VIAL

**Material :** Polyethylene (PS)  
**Capacity :** 12 X 75 MM



### DESICCATOR (VACUUM)

**Material :** Polypropylene (PP & PS)  
**Capacity :** 150 ML., 200 ML., 250 ML., 300 ML.



### CRYO VIAL

**Material :** Polyethylene (PP)  
**Capacity :** 1.8 ML., 4.5 ML.



## PLASTIC LABWARE

### CENTRIFUGE TUBE CONICAL BOTTOM

**Material :** Polypropylene (PS)  
**Capacity :** 15 ML., 50 ML.



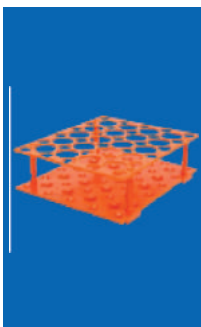
### PIPETTE STAND (VERTICAL)

**Size :** For 28 Pipettes, Dia 14 MM  
Heavy & Light Base



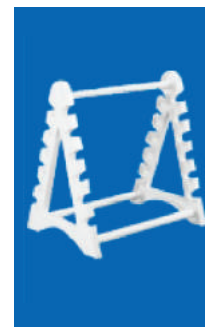
### CONICAL CENTRIFUGE TUBE RACK

**Material :** Polypropylene (PS)  
**Capacity :**  
Wells for 15 ML. Tubes Measures  
17 MM Dia  
Wells for 15 ML. Tubes Measures  
28 MM Dia



### PIPETTE STAND (HORIZONTAL)

**Material :** Polyethylene (PP)  
**Capacity :** For 12 Pipette



### TEST TUBE STAND (ROUND/RECTANGULAR)

**Material :** High Density Polypropylene  
(H.D.P.E.)  
**Capacity :** 19 MM. X 25 MM. ROUND  
16 MM X 25 MM RECTANGULAR



### PASTURE PIPETTE

**Material :** Low Density Polyethylene  
(L.D.P.)  
**Capacity :** 03 ML.



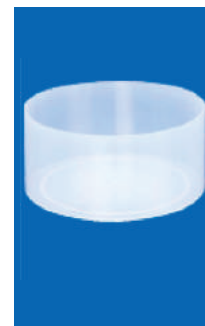
### MICRO TUBE RACK

**Material :** Polypropylene (PP)  
**Capacity :** 12 MM., 20 MM. Tubes



### PNEUMATIC TROUGH

**Material :** Polyethylene (PP)  
**Capacity :** 0-200 MM X H-100 MM  
0-200 MM X H-100 MM



### TEST TUBE STAND 3 (TIER)

**Material :** Polypropylene (PP & PS)  
**Capacity :** 13 MM X 31 Tubes  
16 MM x 31 Tubes  
18 MM x 12 Tubes  
20 MM x 20 Tubes  
25 MM x 18 Tubes



### LABORATORY TRAY

**Material :** Polyethylene (PP)  
**Capacity :**  
250 MM X 300 MM X 50 MM  
415 MM X 300 MM X 75 MM  
430 MM X 350 MM X 75 MM



## GLASS LABWARE

### BEAKER GLASS

**Material :** Borosilicate Glass  
Low form with Spout  
Tall form, with Spout  
**Capacity :** 10 ML. - 10000 ML.



### MEASURING CYLINDER

**Material :** Borosilicate Glass  
Measuring Cylinder with round base and hexagonal base.  
Available in Class A and Class B  
**Capacity :** 5 ML to 2000 ML



### CONICAL GLASS

**Material :** Borosilicate Glass  
Conical Glass with screw cap, with joint, wide mouth, filtering flask and iodine flask  
**Capacity :** 10 ML. - 5000 ML.



### REAGENT BOTTLE

**Material :** Borosilicate Glass  
All bottles available in narrow mouth and wide mouth with plastic and glass stopper.  
**Capacity :** 25 ML to 2000 ML



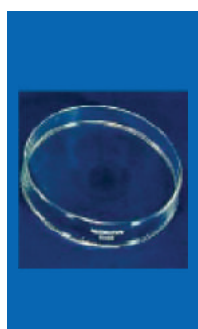
### FLAT BOTTOM & ROUND BOTTLE GLASS

**Material :** Borosilicate Glass  
**Capacity :** 10 ML to 10000 ML



### PETRI DISH

**Material :** Borosilicate Glass  
**Dia Meter :** 50 MM to 200 MM



### FLASK DISTILLATION

**Material :** Borosilicate Glass  
Flat bottom / Round bottom with joint, with two neck or three neck and with side arm  
**Capacity :** 10 ML. to 10000 ML.



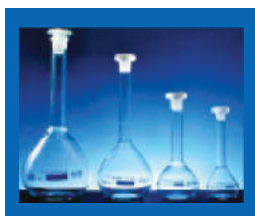
### DROPPING BOTTLE

**Material :** Borosilicate Glass  
All types are available  
**Capacity :** 30 ML to 500 ML



### VOLUMETRIC FLASK

**Material :** Borosilicate Glass  
Available in Class A or Class B  
**Capacity :** 5 ML to 5000 ML



### FUNNEL SEPARATION

**Material :** Borosilicate Glass  
Available in Conical, Pear Shape and Squip Shape with glass stop cork, with rota flow stop cork.  
**Capacity :** 60 ML to 2000 ML



## GLASS LABWARE

### FUNNEL FILTERING

**Material :** Borosilicate Glass  
**Dia Meter:** 50 MM - 200 MM



### BUCHNER GLASS, WITH SINTERED DISK

**Material :** Polypropylene (PS)



### TUBES AND VIALS

Delivery Tube, Test-tube borosilicate / clear glass, Culture Media Tube, Culture Tube-screw thread (Disposable), Screw Cap Vials, ESR Tube, Ignition Tube, Combustion Tube, Centrifuge Tubes, Cones, Adapter, Joint and Sockets, Bell Jar with Stopper/knobbed, Dropper, Couplin Jar, Staining Jar, Gas Jar with Ground Flange and Foot, Pyknometer, Pneumatic Trough, Specimen Jar, Oswald Viscometer



### BOTTLES

Aspirator Bottles, B.O.D. Bottles, Weighing Bottle, Woulf Bottle, Specific Gravity Bottle, Wash Bottles are available



## STAINLESS STEEL

### ALUMINUM DISSECTING TRY WITH WAX

Size : 8" x 6", 10" x 8"  
12" x 8", 12" x 10"  
14" x 10", 15" x 12",  
18" x 12"  
15" x 12", 1'8" x 12"



### KIDNEY TRAY (THICKNESS 0.35MM)

Size : 6", 8", 10", 12"



### KIDNEY TRAY (THICKNESS 0.5MM)

Size : 25 ML., 50 ML., 100 ML.



### S.S. URINAL POT



### SPATULA WITH MAGNIFYING LENS

Size : 7.5" X 2"



## OTHER ITEMS

### PULSE OXI METER

All Types of Pulse oxi meter are available



### THERMOMETER

All types of Thermometer are available



### BLOOD PRESSURE MACHINE

All Types of Blood Pressure Machine are available



### WEIGHT MACHINE

All types of machines are available as per customer requirements



### GLOVES

Surgical Gloves  
Polythene Gloves  
Rubber Gloves  
Disposable Gloves  
Acid Proof Gloves



## MOVING COIL METER DIAL, TOP TERMINAL

Ammeter (0-1A to 0-30A)

Milli-Ammeter (0-1mA to 0-75mA)

**Note :** Dual ranges and triple ranges are also available.



## FLOATING RING MAGNET

Floating Ring Magnets with  
3 Magnets, 5 Magnets &  
7 Magnets



## OHM METER

0-100 Ohms

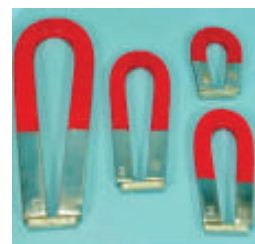


## HORSE SHOE MAGNET

Size : 50x12x5 MM

75x12x5 MM

100x12x5 MM (E.T.C.)



## MAGNETIC KIT

Note : Custom made Kit all type  
are also available as per customer  
requirement.



## GLASS BLOCK, RECTANGULAR

Made with moulded glass with  
polishing surface.

Glass Block Economical

Glass Block Superior

Note : Acrylic Block & Semi-  
Circular Block are also available.



## BAR MAGNET

Size : 50x12x5MM

75x12x5 MM

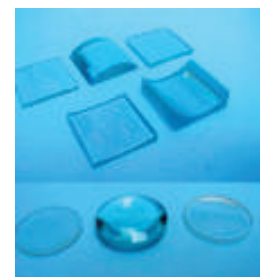
100x12x5 MM (E.T.C.)



## LENSES

Unmounted spherical lenses with  
polished base & ground edges.

Lenses concave, convex,  
Cylindrical, Bi Concave



## U SHAPE MAGNET

Size : 15x6x75MM

15x6x100 MM (E.T.C.)



## PRISM

Clear & transparent prism with  
polished surface & in english glass.

Note : Glass Prism, Acrylic Prism,  
Hollow Prism are also available.



## MIRROR

Mirror Concave  
Mirror Convex  
& Cylindrical



## WIRE

Copper wire comes with SWG  
24-32, Role of 50gm - 110 gm  
Copper wire, bare  
Copper wire, enamelled



## SPRING BALANCE

Round type with transparent  
tubular acrylic body.



## SWITCHES

Plug Key use for making or  
breaking the electrical circuits :  
brass plug & brass blocks, Tapper  
Hole, Terminal fitted on the block  
**Note** : One way plug key, Two way  
plug key also available.



## MASSES (WEIGHT) SET, SLOTTED

Mass Weight set, slotted brass,  
steel chromo plate  
**Note** : Many more masses weight  
are also available as per customer  
requirements.



## HAND LENS

Hand Lens Plastic  
Hand Lens Metallic  
Hand Lens Metallic with  
bakelite handle  
**Note** : Different sizes of dia meters  
50 MM, 75 MM, 100 MM are also  
available



## RESISTANCE COILS

All ranges are available as per on  
demand.  
Resistance Coil with bell terminals,  
with socket, with terminal.



## LENS HOLDER

Lens Holder Wooden, Metal and  
Plastic



## CELL HOLER

Plastic Moulded, helpful for  
folding one cell, two cell, four  
cell



## TEST TUBE STAND WOODEN

Test Tube Stand Wooden  
6 Holes & 12 Holes



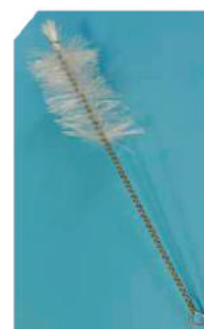
## CLAY PIPE TRIANGLE / CRUCIBLE TRIANGLE

Combustion Boat  
Dessicator Plate



## BRUSH

- Bottle Brush
- Measuring Cylinder Brush
- Burette Brush
- Pipette Brush
- Test Tube Brush
- Beaker Brush



## PORCELAIN

### FUNNEL

Made of porcelain with fixed perforated  
Short Stem, Glazed  
Medium Stem, Glazed  
**Size :** 25 MM to 150 MM



### POROUS POT / POROUS PLATE

Micro Crucible  
Filter Disc  
Casserole, Porcelain



### CAVITY TILE / SPOTTING TILE

Made of porcelain  
Number of Depressions 6, 12,  
18 & 24



### BEEHIVE SHELVES

Made of porcelain  
**Size :** Beehive Shelves (50x35),  
(60x35), (75x35), (80x35) and  
(100x35) MM (Diameter x Height)  
in MM



### CRUCIBLE PORCELAIN

Made of porcelain  
**Capacity :** 10 Ml to 100 Ml



### MORTAR & PESTLE, U TYPE, ROUND FORM

Made of porcelain  
**Capacity :** 25 Ml to 5000 Ml



### EVAPORATING DISH

Made of porcelain  
**Capacity :** 10 Ml to 4000 Ml



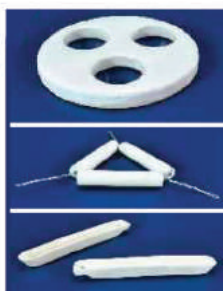
### SLINKY SPRING

Excellent for wave  
demonstration experiments



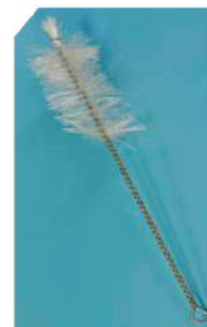
### CLAY PIPE TRIANGLE / CRUCIBLE TRIANGLE

Combustion Boat  
Dessicator Plate



### BRUSH

- Bottle Brush
- Measuring Cylinder Brush
- Burette Brush
- Pipette Brush
- Test Tube Brush
- Beaker Brush



## RETORT STAND

Retort Stand, Sheet Metal, Cast Iron, Pressure Die Casting, Plate Type, Stainless Steel, Euro Design Heavy, A-shaped, H shaped, Sheet Type with Leveling Screw, Tripod Stand, Plastic



## G - CLAMP

These are designed for flawless performance by using the best grades of metal alloys and properly hardened for durability. Easily fix on table.



## BOSS HEAD

Boss Head, Pressure Die Casting, Aluminium  
Boss Head, Pressure Die Casting, Zinc



## CORK BORER

Cork borer is made of brass that are tested for durability, accuracy and precision. These are often used in a chemistry laboratory for cutting a hole in a cork or rubber stopper to insert glass tubing. These borer come in a set of 6, 8 and 10 along with a solid pin for pushing the removed cork (or rubber) out of the borer



## RETORT CLAMP

Retort Clamp, Four Pronged, Pressure Die Cast, Aluminium, Casting, Zinc  
Retort Clamp, Three Pronged, Two Pronged



## CORK BORER SHARPENER

Cork Borer Sharpener to be used with any Cork Borer. One size for all sizes of Cork Borers.



## RETORT RING

Strong circular mild steel ring.  
Retort ring with Boss Head



## VERNIER CALIPER

Vernier Caliper, Iron Type Stainless steel, IME Type, Plastic Type, Wooden Type and Digital Vernier Caliper are available.



## TEST TUBE HOLDER

Test Tube Holder, Metallic with Wooden Handle, Wooden, Wire Type



## MICROMETER SCREW GAUGE

Micrometer Screw Gauge, Stainless Steel  
Micrometer Screw Gauge for Engineering  
Micrometer Screw Gauge, Digital

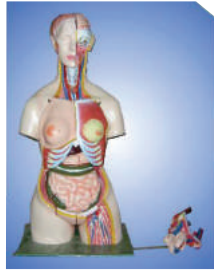


## Models

### HUMAN TORSO

Easily Removal Parts  
Makes them an excellent  
teaching aids.

- . Human Torso Mini, 10 Parts
- . Human Torso Unisex 12 Parts,  
Many more Torso are Available



### HUMAN LIVER

is model showing the liver, gall  
bladder, right hepatic duct, left  
hepatic-duct, cystil duct etc.



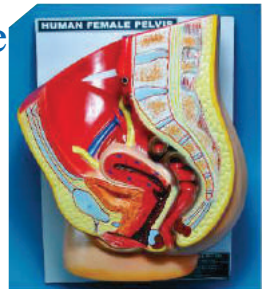
### HUMAN SKELETON

This Model Shows human  
skeleton.



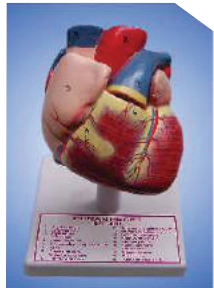
### Human Pelvies Female

Life size, right half of the pelvis  
showing female reproductive organs,  
bladder, uterus, rectum and ovary.  
Mounted on base economically priced,  
with numbered key card.



### Human Heart

- .This Model is Enlarged upto  
2-3X than Original Size
- .It shows Artia with Auricals  
the Coronary sulcus etc.
- Human Heart 2 Part, 3 Part  
4 Part & Jumbo are Available



### Human Pelvies Male

This Model is non dissectible.  
male pelvis showing internal and  
external reproductive organs and  
other vital organs of the pelvic area.  
mounted on a base, appropriately  
coloured and numbered with key card.



### Human Lungs

This Model is Divide into two Parts  
showing bronchioles connecting to  
alveolar ducts. Mounted on a base,  
appropriately coloured and numbered  
with key card.  
Sizes are available as per requirements.



### Human Kidney

- This Model demonstrate all  
the important part of kidney.
- . Human Kidney on stand, on board  
& Free standing on board are  
available
- Note : Kidney stones model are available



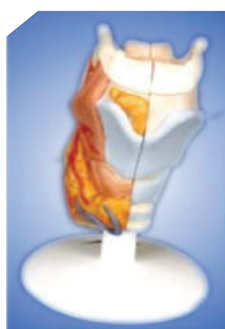
### Human Stomach

this model magnified 2 times  
the natural size. Shows the morphology  
of the stomach in a distended state  
with the longitudinal section, also shows  
the structure of the gastric folds, pyloric  
valve, pyloric sphincter muscles, gastric  
mucosa and the transitional mucosa of the  
gastric-esophagus.



### Human Larynx

This Model is of full size  
divided into two parts.  
Showing muscle, thyroid gland  
larynx hyoid bone, wind pipe, ligaments,  
vessels, nerves mounted on bade,  
appropriately colored &  
nicely finished.  
numbered with key card.



### Human Skin

This 3 layer model shows the hair  
covered skin of the head representing  
hair follicles with sebaceous gland  
sweat glands, receptors, nerve and vessel.  
mounted on a base, appropriately colored  
and numbered with key card



## HUMAN URINARY SYSTEM

This model showing urinary bladder, kidney with ureter etc.



## SPINAL CORE

This model shows the central nervous system, containing 2 set of model.



## HUMAN BRAIN

This model shows structure of brain.



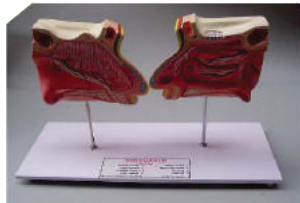
## HUMAN EAR

This model shows human ear.



## HUMAN NOSE

This model shows structure of nose.



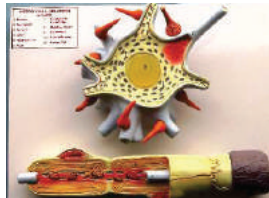
## HUMAN EYE

This model 3 times enlarged & divided into 6 parts.



## HUMAN NEURON

This model shows neuron structure, it is 25000 times larger than original size etc.



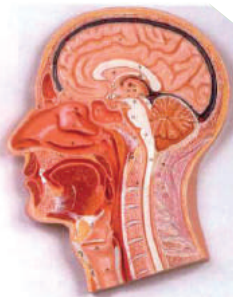
## HUMAN TEETH

This model shows human teeth.



## HUMAN HEAD

This model is divided in 6 parts to ensure the features of half brain with arteries.



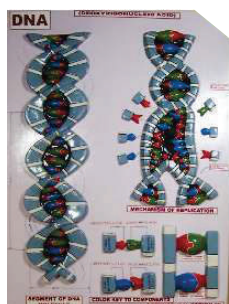
## HUMAN SKULL

This model showing the teeth the upper & lower jaw. made of a mix of fiber glass & clay.



## HUMAN DNA

This model shows DNA Molecule and Mechanism of Replication.



## HUMAN JOINTS

Human Joints Model

- . Arms
- . Shoulder
- . Elbow
- . Hand
- . Knee etc.



## Hare Apparatus

For Comparing the Densities of Liquid by Measuring the heights to 2 columns of liquid produced by applying suction to the short limb



## Magdeburg Hemisphere

The Demonstrate the pressure of atmosphere



## Overflow Vessel (Eureka Can)

GI Sheet Hammer-Tone finish, the top edge is flared to add strength



## Metal Cubes

This Metal cube are intended for special gravity measurements  
Set of 6 Different Metal



## Metal Cylinders

These cylinders are used in density in special gravity measurement



## Hydrometer

These Ingenious Racks with a 3-tiers provide a clear view of the tube contain in convenience inserting & removal of tube



## Pendulum Bobs or Spheres

Comparing a solid turned bobs of different metal available in 3 different size



## Bell Experiment Apparatus (Bell in Bell Jar)

For Demonstration that sound can not be transmitted into vacuum



## Bucket & Cylinder

This Cylinder has suspension hook at one end



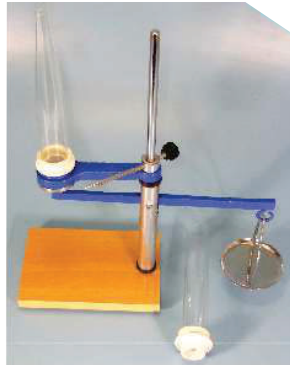
## Portable Diaphragm type Vacuum Pump Cum Air Compressor Oil Free Light Weight

This Air pump is suitable for a number of classroom demonstration, single barrel made from steel pipe Fitted on wooden base



## Pascal Law Experiment

For Showing that pressure is transmitted equally in all direction



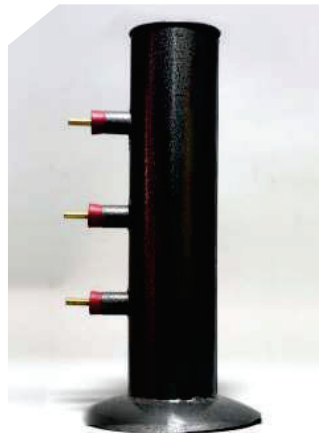
## Expansion of Liquid Apparatus

To show difference in expansion of various liquid over same temperature range



## Fluid Pressure Apparatus (Spouting Cylinder)

To Demonstrate that pressure increases with depth



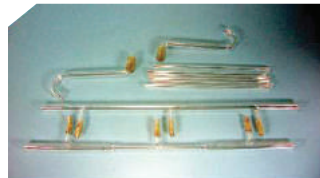
## Boyles Law Apparatus

The Apparatus is Great for demonstrating boyles Law



## Bernoulli Tube Apparatus

Consist of a bernoulli tube with central narrow portion



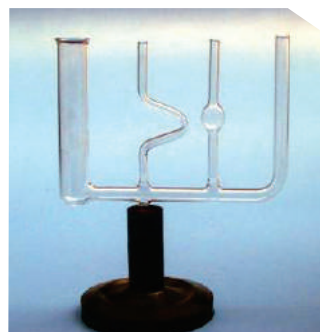
## Fluid Pressure Apparatus, Hydraulic Press

Demonstrate the process of transmissibility of fluid pressure



## Water (Liquid) Level Apparatus

For Showing that the level of liquid in communicating tubes in the same regardless of their shapes



## Charles Law Apparatus, Basic

To Demonstrate Charles Law



## Young's Modulus Apparatus Searle's Type

This Apparatus consist often engraved 10cm brass scale in vernier with 0.1mm precision



## Charles Law Apparatus, Combined

To Demonstrate Charles Law



## Bourdon Gauge

used to measure actual gas pressure



## Balance, Double Beam

Based on Roberval principal to find difference of two sides



## Lift Pump

To show the concept involved in lift pump



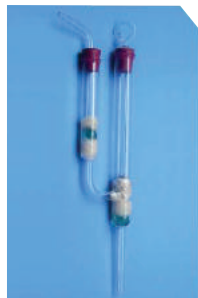
## Balance Triple Beam

Triple pan balance with weight capacity up to 610g in extended to 2610g with supplementary masses both with 0.1g readability.



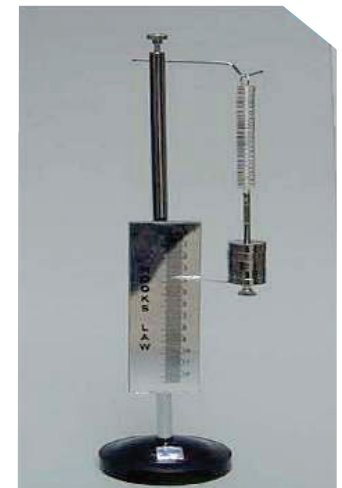
## Force Pump

Demonstrate the working principle of force pump



## Hook's Law Apparatus

Triple pan balance with weight capacity up to 610g in extended to 2610g with supplementary masses both with 0.1g readability.



## Kinetic Theory Apparatus

Demonstrate the kinetic theory of gases.



## Masses (Weight) Hooked

Polished masses (Weights) with hook at the top for suspension in wooden block



## Balance, Single Pan, Beam Type

The Balances has for notched waiting beams



## Masses (Weight) Set, Slotted

Precious masses (Weight) & hangers are made of metal wire with hook for suspension



## Spring (Newton) Balance

Rectangular plastic body with flat metal scale



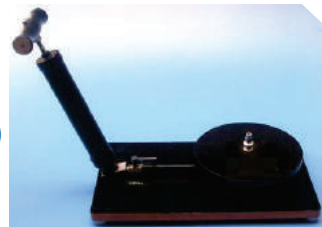
## Rheostat

Rheostat are used as series the resistor and potentiometer



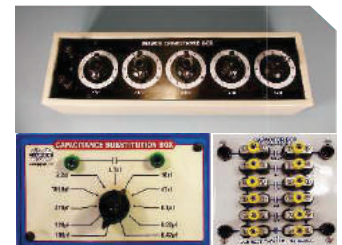
## Air Pump (Vacuum Pump With Aluminum Plate)

The Air pump is suitable for number of classroom demonstration, single barrel made from steel pipe fitted on wooden base



## Capacitance/ Inductance Box

Available in single dial, double dial, triple dial & Four Dial



## Hand Operated Vacuum Pump

The Hand operated vacuum pump is ideal for fast filtration



## Wheatstone Bridge

The Four Gap Bridge has a large & heavy copper strip mounted on heavy 3/4 inch laminated base



## Potentiometer Module

Mounted on Channel Box



## Potentiometer Single Wire

in consist of a wooden base with brass blocks



## Decade Resistance Box

Available in single dial, double dial triple dial & Four Dial



## Platinum Resistance Thermometer

Suitable for temperature below 150 degree celsius



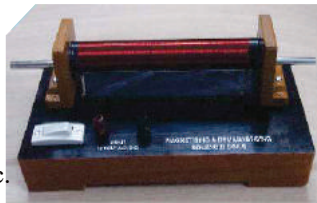
## Circuit Board

Circuit Board simple, spare types, Worcester type



## Magnetizing & Demagnetizing Coil

Low voltage, suitable for magnetizing and demagnetizing ordinary magnet, iron bars, strips etc.



## Tangent Galvanometer

The plastic ring or bobbin, wound with three coils of insulated copper wire



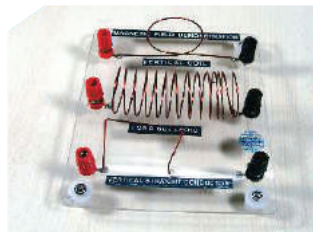
## Magnetic Field Demonstrator

Well Suited for demonstration purposes



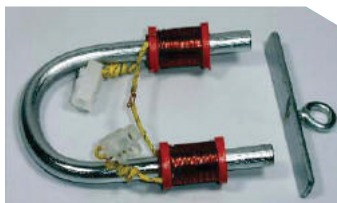
## Magnetic Field Apparatus

A Set of 3 perspex mounted wire



## Electromagnet

U shape core of circle section with armature in carrying hook



## Westminster Magnetic Tik

A kit containing the essential item for basic experiment in electromagnetism.



## Induced Current Apparatus

A Soft iron core fixed the cylinder



## Force on a Conductor Apparatus

Comprising a strong u shape magnet and a pair of brass rails with 4mm socket terminals



## Oersted's Apparatus

To show the action of an electric current on a magnet



## Conductors Set of 3

These are made of brass with inter changeable on pillars



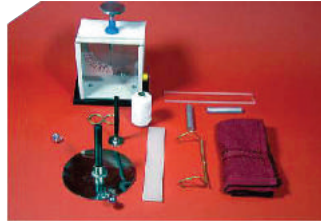
## Gold Leaf Electroscope

Gold Leaf Electroscope in conical flask is also available



## Electrostatic Kit

This Apparatus show electrostatic kit



## Demountable Transformer

Separate coils for de-mountable transformer



## Friction Rods

A set of 5 Rods



## Demonstration Electric Motor

A model of the simplest form of dc electric motor



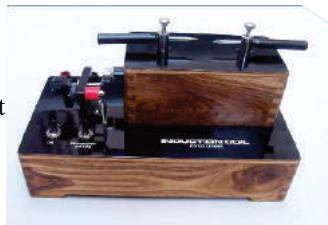
## Whimshurt Electrostatic Machine

This machine will generator charge with regular discharge, The Apparatus is mounted on a base easy to transport



## Induction Coil

Available in difference spark length



## Petrol Engine Model

This Apparatus show petrol engine



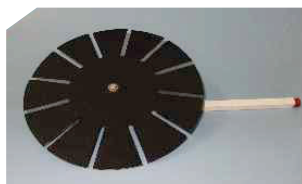
## Van de Graff Generation

For Production of high voltage static electricity



## Stroboscope

Simple Model, Hand Driven to Show the student stroboscope effects



## Diesel Engine Model

This Apparatus show Diesel engine



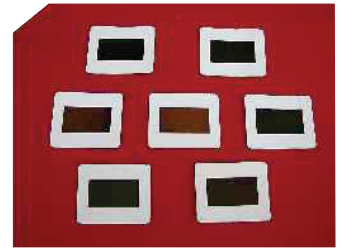
## Compact Light Source

The lamp housing is mounted on a stainless steel rod



## Color Filters

Available in paper & Plastic mounted



## Newton Color Disc

Newton color disc hand operated and with motor are available



## Frequency Signal Generator

This Apparatus is used for measuring frequencies



## Inclined Plane

A board with a well finished wooden base



## Tuning Fork Set

This Apparatus is used for measuring frequencies



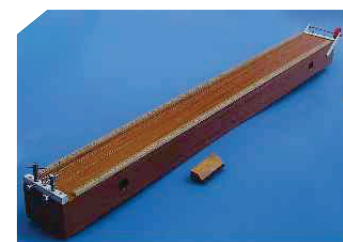
## Optical Bench with Accessories

This Optical bench is commonly used in physic lab today, optical bench with wooden/ metal frame are available



## Sonometer

Consist of wooden resonance box with 2 metal rules graduated into mm



## Optical Pins

A packet of 50 pieces in plastic pack



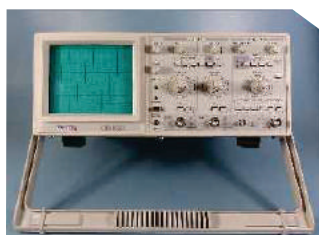
## Slinky Spring

Excellent for wave demonstration experiments



## Cathode Ray Oscilloscope

Various model are available



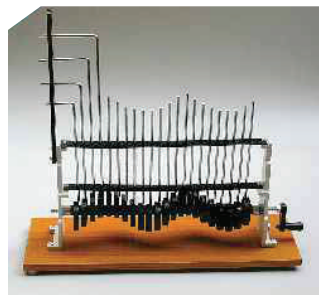
## SPATULA One side Flat & Other Side Spoon

All Sizes Available as per your requirement



## Wave Motion Appartus

This Apparatus is used in physics experiments



## Tongs

All Sizes Available as per your requirement



## Tripod Stand

Tripod Stand Triangle head round head and stainless steel



## Spirit Lamp

Sprit Lamp Glass, alcohol/ Hexagonal, stainless steel aluminum are available



## Bunsen Burner

Bunsen Burner with brass pipe with iron chrome plated pipe, with spare jet, with stock cock, micro & high Flame are avialable



## Forceps & Dissecting Scissors

All Sizes Available as per your requirement

## Thermometer Laboratory

Glass capillary with bulb type, white/Yellow back.

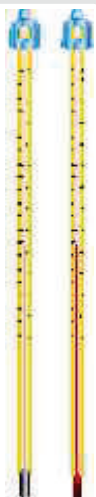
Length 300mm

- Thermometer, Laboratory, Alcohol

(Min. Range: -10°C-110°C & Max. Range: -10°C to 150°C)

- Thermometer, Laboratory, Mercury

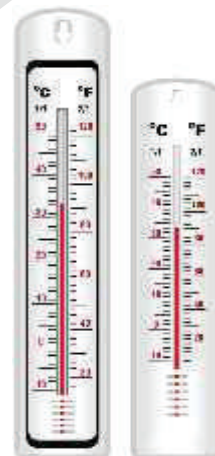
(Min. Range: -10°C-50°C & Max. Range: -10°C to 300°C)



## Wall Thermometer Plastic Body

Red spirit filled thermometer, Consist of specially designed glass capillary which facilitates the reading inside column. Having provision for wall mounting. Range: -10 to 50° C

- Thermometer, Wall, Plastic Body, Small
- Thermometer, Wall, Plastic Body, Big Size



**THERMOMETERS**

## Wet & Dry Thermometer:

With Plastic body include humidity chart C&F. Range: -10°C to 50°C



## Max & Min Thermometer:

- Regular, With Magnate Plastic body. Range: 30°C to 60°C
- Superior with screen printing mercury filled at -40°C to 50°C



## Hydrometer Light & Heavy:

Hydrometers is a device to measure relative density of liquids such as Grease, oil etc. To test the density of a liquid, we use a long glass jar. The jar is filled with liquid and hydrometer is floated inside the fluid. The liquid surface touches the stem of hydrometer at specific point, which indicates specific gravity of that fluid.

Note: Hydrometer, Universal are also available.



## Hygrometer, Whirling:

Available in Mercury or Red Spirit with conversion table and wick.

Range: -50 to 50° C / F

- Hygrometer, Whirling, Alcohol
- Hygrometer, Whirling, Mercury





## Gas Tap

Made of brass with superior black powder coating. Heavy construction having lever handle with locking arrangement to ensure lever rotation does not go beyond 90°. Output nozzle having 4mm bore. Inlet 3/8 X 26. Flange diameter 50mm with two holes to fix on bench or any other surface with screws. Provided with adapter (6/8, 3.8mm bore) and corresponding nut (8mm bore). Designed to operate at pressure up to 2 psi (0.14kg/cm<sup>2</sup>). Suitable for use with coal gas, natural gas and L.P.G

Gas Tap Types:

Gas Tap Heavy (one way, Two way, Three Way & Four way)

Gas Tap Regular (one way, Two way, Three Way & Four way)

## Gas Tap, Chrome Plated :

Made of brass with superior chrome plating. Output nozzle having 6mm bore. Inlet 1/2 X 14. Flange diameter 46mm with two holes to fix on bench or any other surface with screws. To be fitted directly on fitting. Designed to operate at pressure up to 2 psi (0.14kg/cm<sup>2</sup>). Suitable for use with coal gas, natural gas and L.P.G.

Gas Tap Type:

Gas Tap (one way, Two way, Three Way & Four way)



## Joints:

Flared, Forged Brass with Three Nuts & Two Nuts.

Joints Types:

- T-Joint
- Straight Joint



## Control Tap:

Made of Forged brass with Two Nuts.

Sizes:

Control Tap with (6/8, 6/8)

Control Tap with (10/12, 10/12)

Control Tap with (6/8, 10/12)



## Water Tap, Swan Neck

Heavy construction. Brass with Chrome Plated finish. 1/2 inches BSP threaded inlet. Mechanism to lock the neck at desired position. Bench Mounting Type.



Types : Water Tap, Swan Neck, Light

Water Tap, Swan Neck, Heavy

Water Tap, Swan Neck, Knobbed

Note : Available in One way, Two way & Three way

## Copper Pipe for Gas Fitting:

## Hygrometer, Whirling:

Copper Pipe for Gas Fitting is available in various size and gauge.





## Student & Medical Microscope

We offers huge range of Student and medical microscope used in various schools, colleges and university laboratory for the purpose of teaching students.

- Student Microscope Regular
- Student Microscope, Superior
- Student Microscope with Inclined Tube

Note: Medical Microscope for Secondary School with Inclined Tube also available.

## Projection Microscope

We offers huge range of Projection microscope allowing the simultaneously observation of many persons and maximize the educational efficiency without fatigue of eyesight. This microscope is compact in design and can be easily operated for long duration. It provides distortion free high contrast magnified image.

- Student Projection Microscope Doom Type
- Projection Microscope, Wall Screen
- Senior Projection Microscope
- Projection Microscope with Binocular & Trinocular Head



## Projection Microscope with LCD Screen

We offers huge range of Projection microscope allowing simultaneously observation of many persons and maximize the educational efficiency without fatigue of eyesight with LCD screen to have proper visualization. This microscope is compact in design and can be easily operated for long duration. It provides distortion free high contrast magnified image.

- Projection Microscope, Economy Type
- Projection Microscope with Binocular Head & LCD Screen
- Projection Microscope, 45°
- Projection Microscope, 30°

- Dissecting Microscope
- Travelling Microscope



## Stereo Microscope

We offers huge range of Inclined Stereo microscope used in various schools , colleges and university laboratory having sharp stereo effect image over a wide-field of view.

- Stereo Microscope, Basic
- Stereo Microscope with Extension Pillar
- Stereo Microscope with Attachable Base & Mirror Illumination



## Inclined Stereo Microscope

We offers huge range of Inclined Stereo microscope used in various schools , colleges and university laboratory with inclined tubes having sharp stereo effect image over a wide-field of view.

- Inclined Stereo Microscope, Basic
- Inclined Stereo Microscope with Extension Pillar
- Inclined Stereo Microscope with Attachable Base & Mirror Illumination
- Inclined Stereo Microscope with Illumination System

## Research Stereo Microscope

We offers huge range of Research Stereo Microscope used in various schools , colleges and university laboratory for study of translucent or opaque objects with dual lighting system. Give three dimensional view over a wide field, flat sharp erect and universal image. Long working distance. And large field of view. Parfocal high to low power quick changing paired objectives rotatable through 90° inclined binocular stereo head at 45° with eye tubes for optimum and comfort viewing , rotatable through 360° lockable in any position.

- Research Stereo Microscope with Turret Mount
- Research Stereo Microscope with Turret Mount & Dual Illumination
- Research Stereo Microscope with Universal Stand, Turret Mount





## Monocular Research Microscope

We offers huge range of Monocular Research Monocular microscope used in research institute and laboratory to meet the stringent requirement of person. All the parts are made of pressure die cast to provide modularity long life and uniformity .

- Monocular Research Microscope, Basic
- Monocular Research Microscope, Co-Axial Focusing 45°

## Binocular Research Microscope

We offers huge range of Binocular Research Monocular microscope used in research institute and laboratory to meet the stringent requirement of person . All the parts are made of pressure die cast to provide modularity long life and uniformity .

- Binocular Research Microscope, Basic
- Binocular Research Microscope, Co-Axial 45°
- Binocular Research Microscope, Co-Axial 30°



## Trinocular Research Microscope

We offers huge range of Trinocular Research Monocular microscope used in research institute and laboratory to meet the stringent requirement of person . All the parts are made of pressure die cast to provide modularity long life and uniformity .

- Trinocular Research Microscope, Basic
- Trinocular Research Microscope, Co-Axial 45°
- Trinocular Research Microscope, Co-Axial 30



- Tissue Culture Microscope, Binocular/Trinocular
- Inverted Tissue Culture Microscope



- Metallurgical Microscope, Monocular/Binocular
- Laboratory Metallurgical Microscope
- Inverted Metallurgical Microscope

❖ A complete range of High End Microscopes for Research/Medical laboratory are available.

❖ All types of Microscope's Accessories are available.

- Dual Viewing Microscope
- Penta Head Multi-Viewing Microscope
- Penta Head Multi-Viewing Microscope, Research



- High Precision Comparison Microscope
- Tool Maker Microscope
- Inverted Biological Microscope
- Student Polarizing Microscope



## U-Tube Manometer

It is small Manometer used for precision measurement of Pressure, Differential Pressure for flow measurement in plants with scale of 15cm on base with meter rule.

## CHARTS



Standard Size : 50 x 70 cm

Language : English

Laminated paper charts with plastic rollers. These charts have detailed description in vivid colours.

- Chart, Human Physiology
- Charts, Botany
- Charts, Zoology Life History
- Charts, Natural Cycles
- Charts, Chemistry
- Charts, General
- Charts, Physics

Note : Also available custom made charts in different sizes and also in different materials like synthetic plastic and tarpaulin and Black Rexin.

Note : Custom-made charts can also be made as per design and language provided by you.

### RUBBER CORK STOPPER, SOLID

Made of natural rubber, Red in colour.

Type : Rubber Cork Stopper, without Hole, with one Hole, with Two Hole

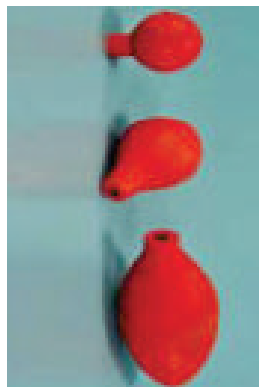


### PIPETTE BULB

One way, Red in colour

Capacity : 10 ML, 20 ML, and 25 ML (Oval in shape)

Note : Also available in Silicon.



### FILER PAPER, STUDENT

Sizes (diameter) available are 9cm, 19 cm, 22 cm, 11.5 cm, 15 cm, 21.5 cm, 25 cm



### pH INDICATOR PAPER

pH indicator paper are manufactured from high quality. In form of 5 or 10 booklets of 20 leaves in plastic case with pH colour indicator chart.

pH Indicator Paper, 100, 200 Leaves



### INDICATOR PAPER, LITMUS

Supplied in small plastic case of 5 books each with 20 leaves of size 63.5 x 10 mm wide approx.

Total 100 leaves. Available in Red and Blue litmus paper.



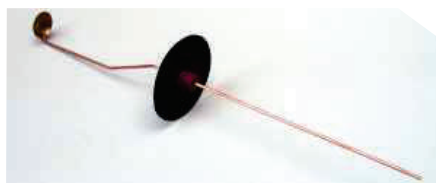
### Dissection Kit


Set of 9 piece & 18 Pieces are available  
We also provide custom made dissection Kit




### Deflagrating Spoon with Lid

Die Pressed Steel Spoons



  
**Government of India**  
**Form GST REG-06**  
*[See Rule 10(1)]*  
**Registration Certificate**

Registration Number : 09AIGPD7849C2Z7

1. Legal Name	AJEET DHAMIJA		
2. Trade Name, if any	AMP MEDICOSE AND EQUIPMENTS		
3. Additional trade names, if any			
4. Constitution of Business	Proprietorship		
5. Address of Principal Place of Business	A-2/119, Kasna Industrial Area, UPSIDC Site 5, UPSIDC Site 5, Greater Noida, Gautam Buddha Nagar, Uttar Pradesh, 201308		
6. Date of Liability			
7. Period of Validity	From	19/05/2023	To
8. Type of Registration	Regular		
9. Particulars of Approving			
Signature			
Name			
Designation			
Jurisdictional Office			
Date of Issue of Certificate	19/05/2023		
Note: The registration certificate is required to be prominently displayed at all places of business in the State.			

This is a system generated digitally signed Registration Certificate issued based on the deemed approval of application on 19/05/2023.

Certificate No. : 090408BC01AA

  
**CERTIFICATE**

This Certificate certifies that the Management System of

**AMP MEDICOSE AND EQUIPMENTS**

ADDRESS :  
A-2/119, KASNA INDUSTRIAL AREA, UPSIDC SITE 5, GREATER NODIA, GAUTAM BUDDHA NAGAR, UTTAR PRADESH, 201308

has been audited by CAPL and found to be in conformance with the requirements of the standard

**ISO 9001:2015**  
(Quality Management System)

This certificate is valid for the following scope

**MANUFACTURING, SUPPLY OF MEDICAL SCIENTIFIC LAB EQUIPMENTS AND CHEMICALS**

Initial Registration Date : 29/05/2023  
Certificate Valid Until : 28/05/2026  
Next audit due on : 28/05/2024

First Surveillance due on : 28/05/2024  
Second Surveillance due on : 28/05/2025  
(continuation of this certificate is subject to maintenance of surveillance audits)

 (Scan to Verify)
  Director
 



  
**Criterion Assessment Private Limited (CAPL)**  
 C-37/6, Paper Mill Colony, Nishatganj, Lucknow - 226006, Uttar Pradesh, India  
 This Certificate is intellectual Property of CAPL and can be maintained through surveillance and renewal audits. The accredited part of the above scope is monitored as per EGAC rules & regulations and unaccredited scope is maintained as per CAPL Management System Regulations.  
 The certificate can be verified on our official website [www.caplcerts.in](http://www.caplcerts.in)  
 CA-ADM-044 Rev 05 Effective Date : 20.06.2020

  
**भारत सरकार**  
**Government of India**  
**सूक्ष्म, लघु एवं मध्यम उद्यम प्रकल्प**  
**Ministry of Micro, Small and Medium Enterprises**

  
**MSME**  
**MINISTRY OF MICRO, SMALL & MEDIUM ENTERPRISES**

**UDYAM REGISTRATION CERTIFICATE**

UDYAM REGISTRATION NUMBER : UDYAM-UP-28-0072485

NAME OF ENTERPRISE : AMP MEDICOSE AND EQUIPMENTS

S.No.	Classification Year	Enterprise Type	Classification Date
1	2023-24	Micro	19/05/2023

MAJOR ACTIVITY : **MANUFACTURING**

SOCIAL CATEGORY OF ENTREPRENEUR : **GENERAL**

NAME OF UNIT(S) :

S.No.	Name of Unit(s)
1	AMP MEDICOSE AND EQUIPMENTS

OFFICIAL ADDRESS OF ENTERPRISE :

Flat/Door/Block No.	A-2/119	Name of Premises/ Building	AMP MEDICOSE AND EQUIPMENTS
Village/Town	KASNA INDUSTRIAL AREA	Block	UPSIDC SITE -5
Road/Street/Lane	GRATER NODIA	City	GAUTAM BUDDHA NAGAR
State	UTTAR PRADESH	District	GAUTAM BUDDHA NAGAR, Pin 201308
Mobile	9837894424	Email:	ampmedicoseandequipments@gmail.com

DATE OF INCORPORATION / REGISTRATION OF ENTERPRISE : 18/05/2023

DATE OF COMMENCEMENT OF PRODUCTION/BUSINESS : 18/05/2023

S.No.	NIC 2 Digit	NIC 4 Digit	NIC 5 Digit	Activity
1	28 - Manufacture of machinery and equipment n.e.c.	2829 - Manufacture of other special-purpose machinery	28292 - Manufacture of machinery for working soft rubber or plastics or for the manufacture of products of these materials	Manufacturing
2	46 - Wholesale trade, except of motor vehicles and motorcycles	4659 - Wholesale of other machinery and equipment	46596 - Wholesale of scientific, medical and surgical machinery and equipment	Trading

NATIONAL INDUSTRY CLASSIFICATION CODE(S) :

DATE OF UDYAM REGISTRATION : 19/05/2023

\* In case of graduation (upward/reverse) of status of an enterprise, the benefit of the Government Schemes will be availed as per the provisions of Notification No. S.O. 2119(E) dated 26.06.2020 issued by the Mo MSME.  
Disclaimer: This is computer generated statement, no signature required. Printed from <https://udyamregistration.gov.in> & Date of printing:- 19/05/2023

For assistance, you may contact:

1. District Industries Centre: GAUTAM BUDDHA NAGAR (UTTAR PRADESH)

We also Provide Chemical  
as per your requirements



**AMP**

MEDICOSE & EQUIPMENTS



*Single Source Solution Provides for  
All Your Scientific and Medical  
Requirements*

## **AMP Medicos & Equipments**

A-2/119, UPSIDC, Site-5, Kasna Industrial Area  
Greater Noida, Gautam Buddha Nagar 201310

Ph.: +91 9837894424 | +91 9759079000 | +919634033359

E-Mail: [ampmedicoseandequipments@gmail.com](mailto:ampmedicoseandequipments@gmail.com)

Website : [www.ampmedicoseandequipments.com](http://www.ampmedicoseandequipments.com)