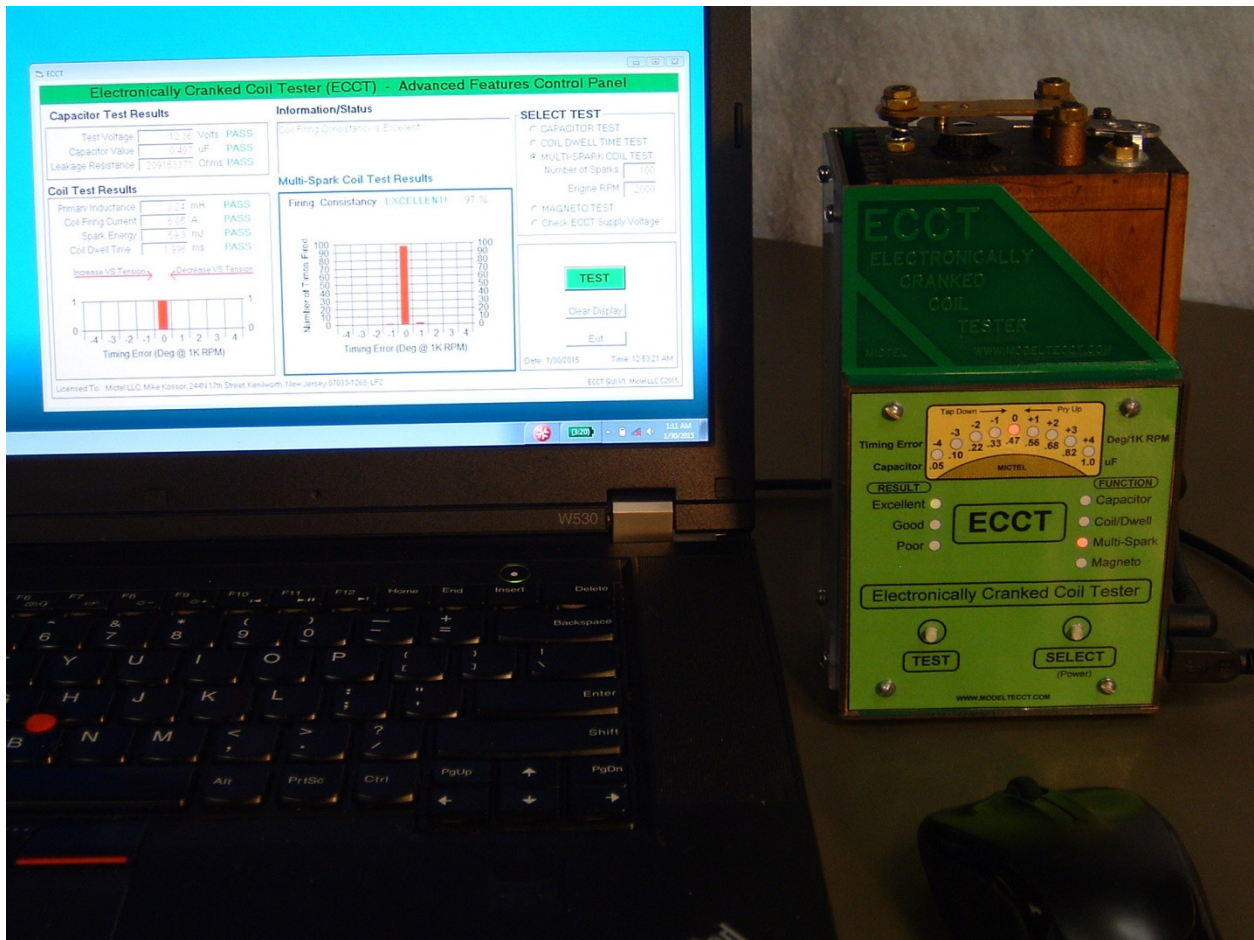


ECCT™

Advanced Features Software Installation Instructions



Mictel LLC
244N. 17th Street
Kenilworth, NJ 07033
e-mail: mictel@comcast.net
web: www.modeltimer.com

ECCT Software Installation Instructions

ECCT Contents

The ECCT contains the following items:

Quantity	Description
1	ECCT
1	ECCT AC/DC Power Supply: 12V, 8A
1	3ft. Magneto Test Cable
1	3ft. USB A to USB Mini-A/B PC Interface Cable

* Model T Coil Not Included



Patent Pending

ECCT Software Installation Instructions

1 Computer Cable Installation Procedure for Windows 7

(Windows 10 Installation Procedure - skip to Section 5 on Page 13)

Plug the ECCT 12VDC adapter plug into the ECCT then plug the AC adapter into the wall outlet. Turn on the ECCT power by pressing the SELECT / (power) button **and hold for 5 seconds**.

Connect the computer cable to the ECCT and a spare USB port on your PC.

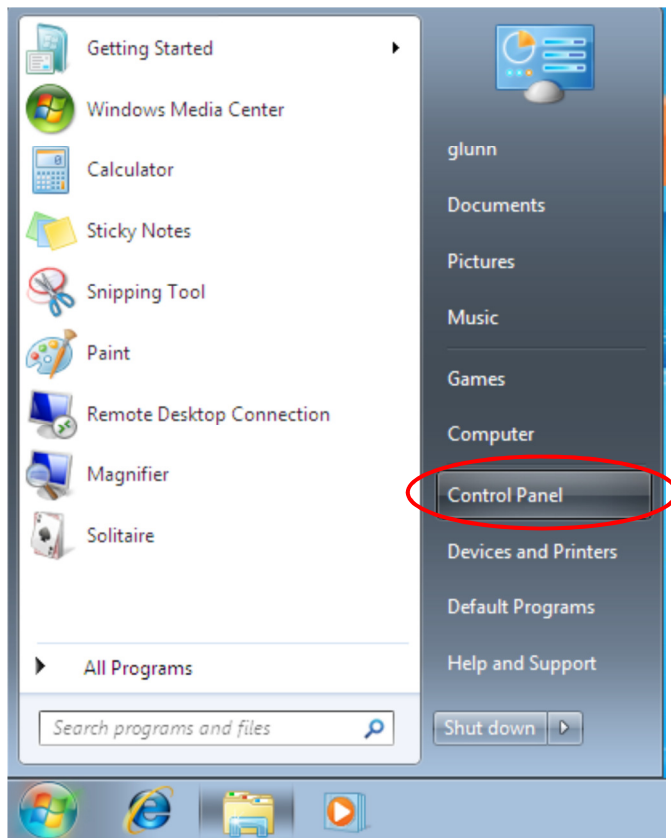
Windows 7 will automatically connect to the Windows Update website and install the suitable driver if your PC has an active internet connection.

IMPORTANT! If you do not have your PC connected to the internet or the driver is not automatically found and installed then you will have to download the ECCT Driver from the www.modeltecct.com website and follow the manual driver installation procedure in **Section 8** of this manual, page 23.

2 COM Port Setting for Windows 7

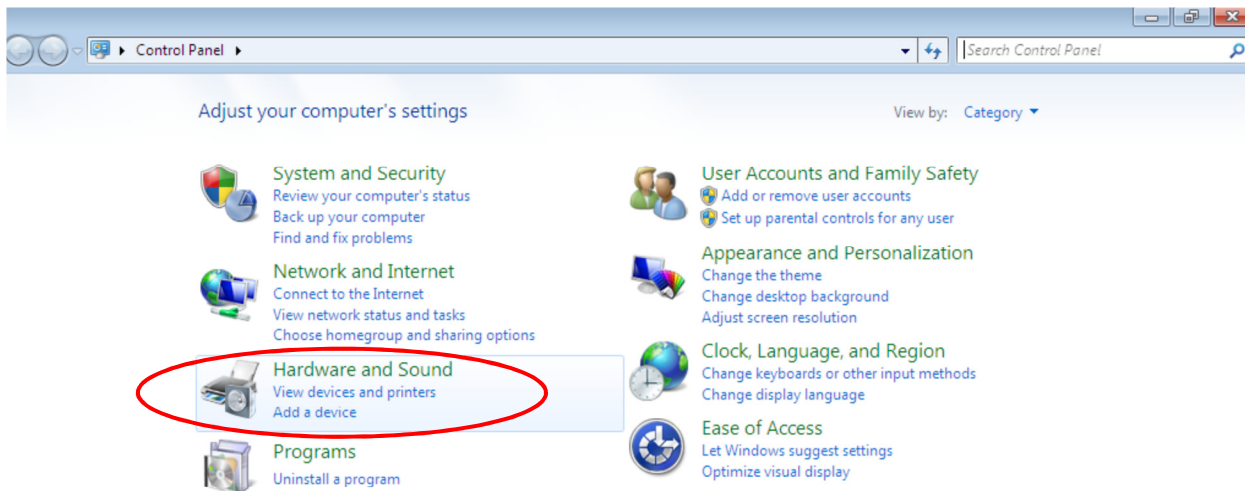
The computer cable must be assigned to COM4 to communicate with the ECCT after the driver has been installed in section 1. Check the COM port setting as follows:

Press the Windows start button to bring up the start menu and select “Control Panel”.

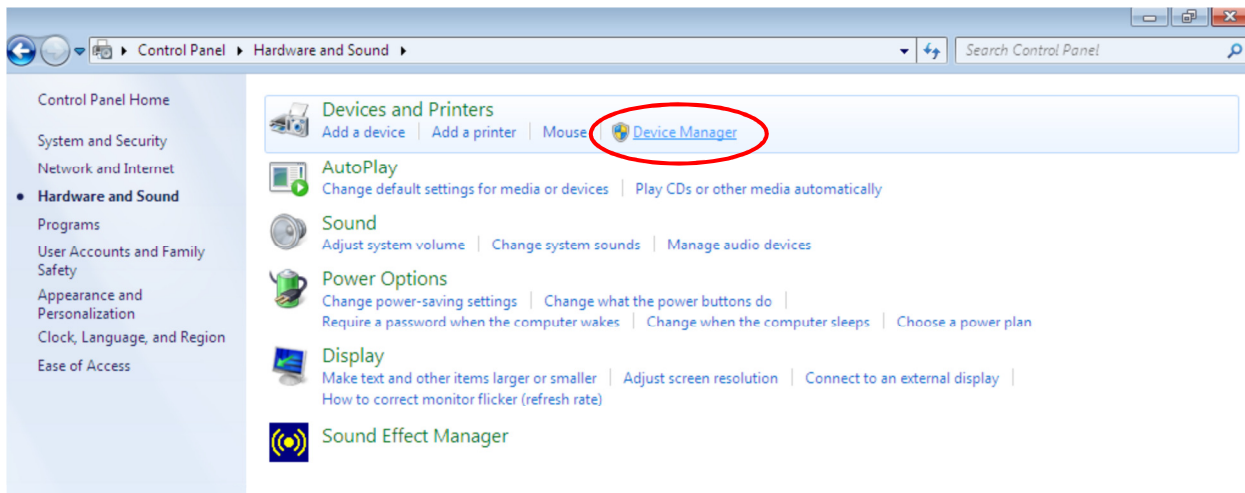


From the Control Panel window select Hardware and Sound

ECCT Software Installation Instructions



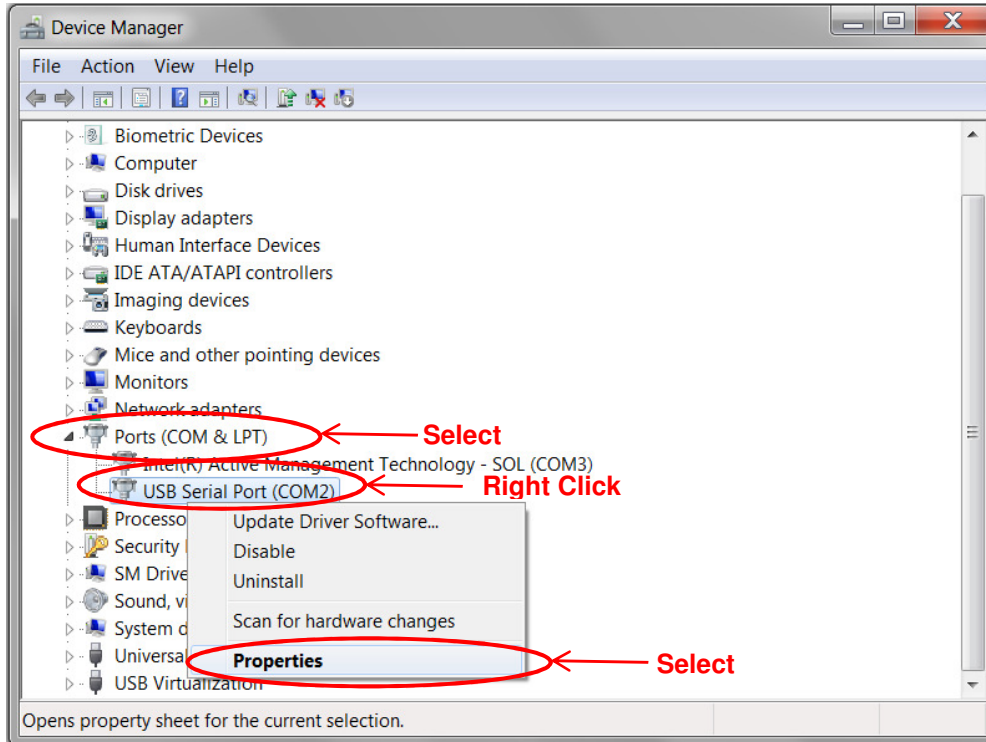
At the next screen select Device Manager:



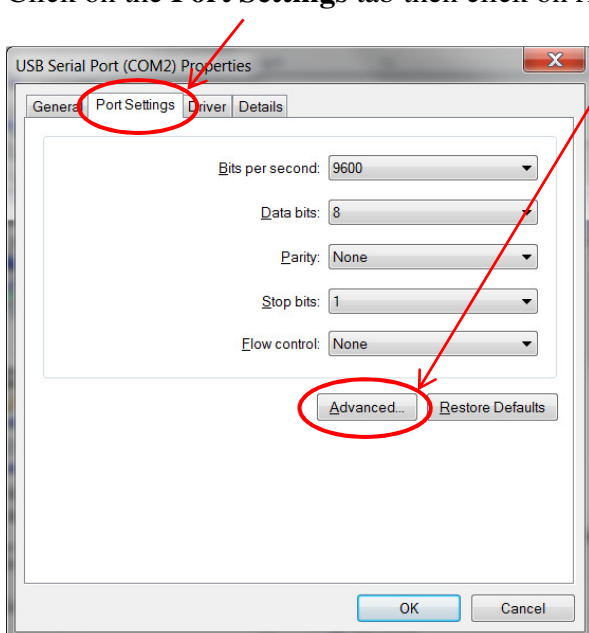
ECCT Software Installation Instructions

Scroll down to Ports (COM & LPT) and look for **USB Serial Port (COM4)**. If the port assignment is other than: **USB Serial Port (COM4)**, proceed as follows to change the port assignment to (COM4).

Right click on **USB Serial Port** and select **Properties**



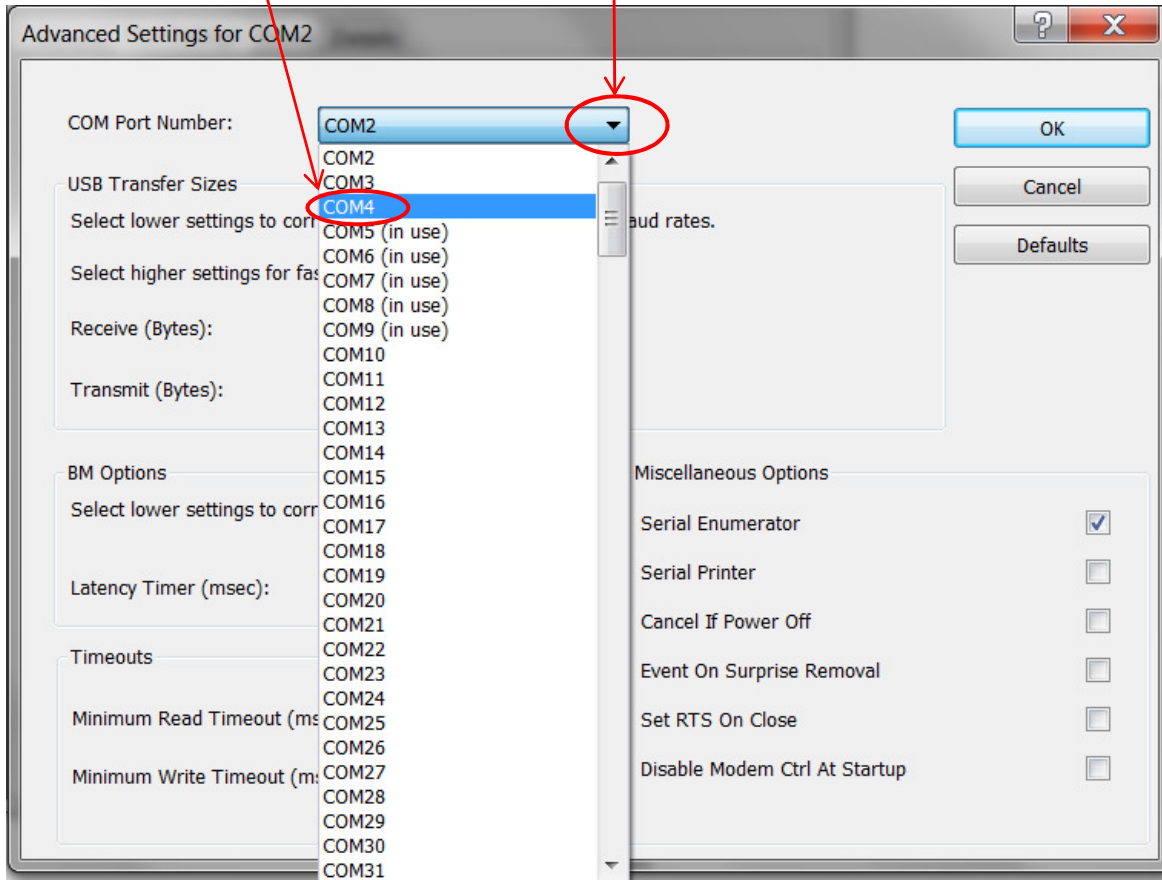
Click on the **Port Settings** tab then click on **Advanced...**



ECCT Software Installation Instructions

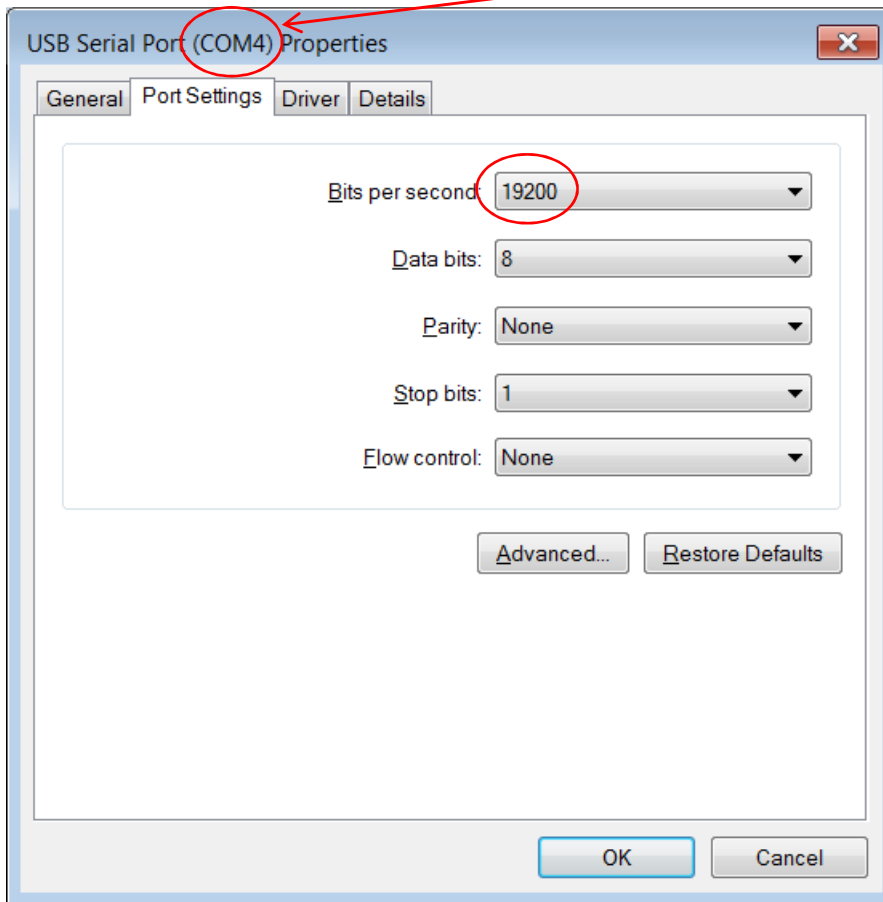
Click on the COM Port Number: drop down box

Then select **COM4** then click on **OK**



ECCT Software Installation Instructions

The Advanced menu will close and the USB Serial Port should now be show (COM4).



Check these values are the same as shown.

If not, change the values as indicated,

then click OK

Make sure that Bits per second: is set to 19200

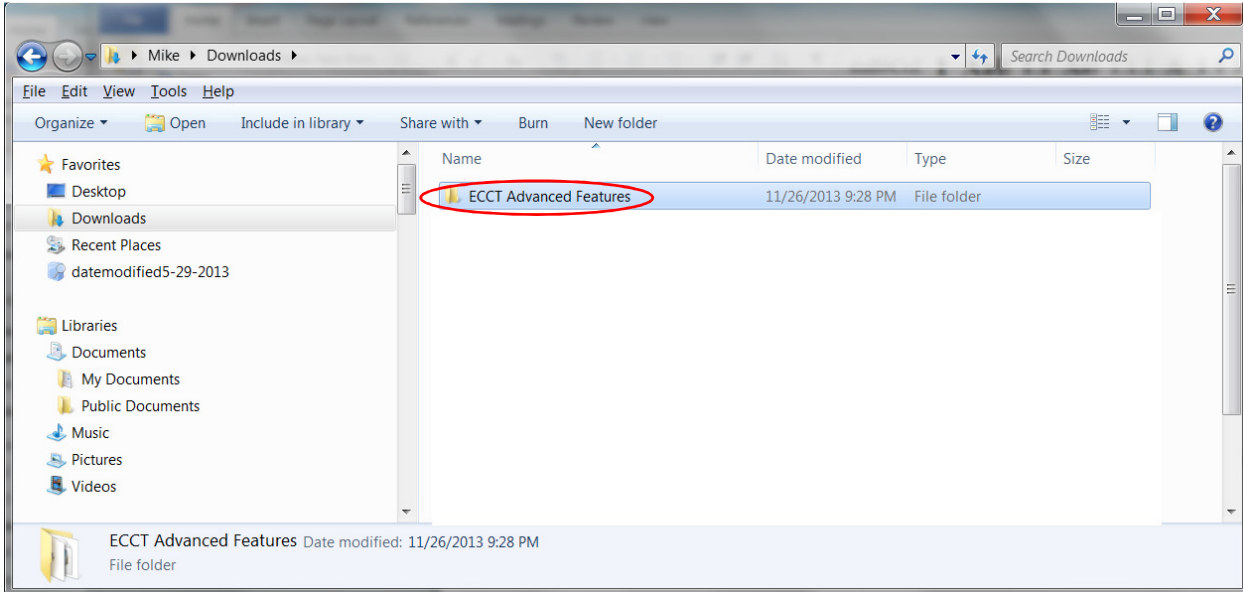
Click on **OK** to complete ECCT Computer Cable Installation Procedure.

You are now ready to load the ECCT Advanced Features Software.

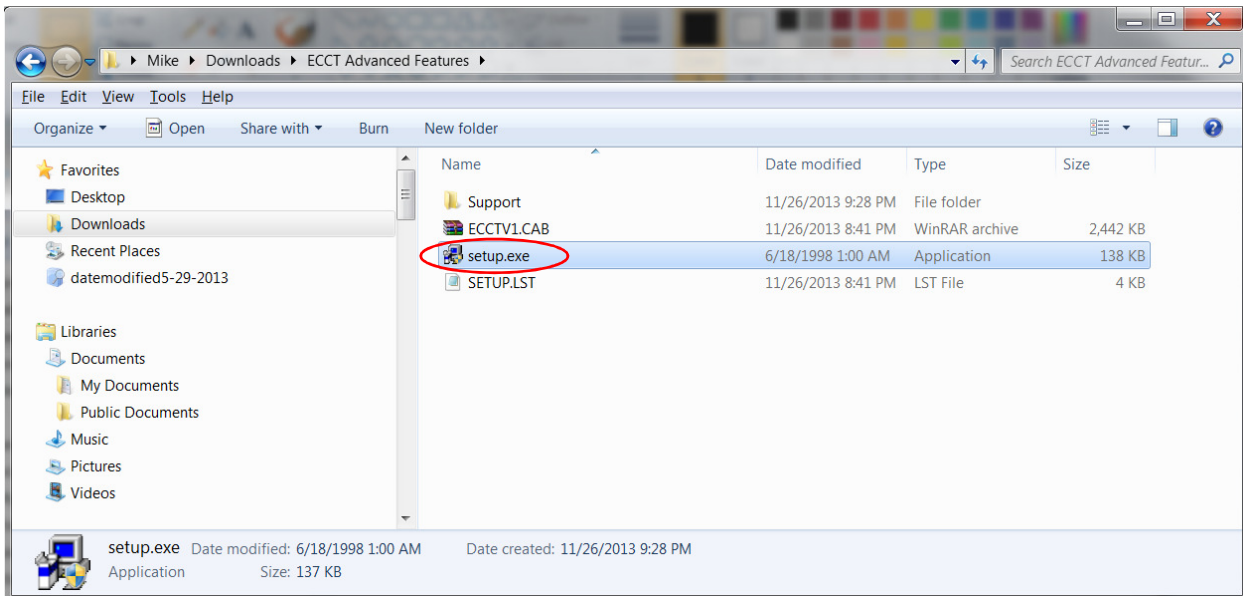
ECCT Software Installation Instructions

3 ECCT Advanced Features Software Installation

1. Copy the ECCT Advanced Features directory to Downloads Folder and unzip the files.

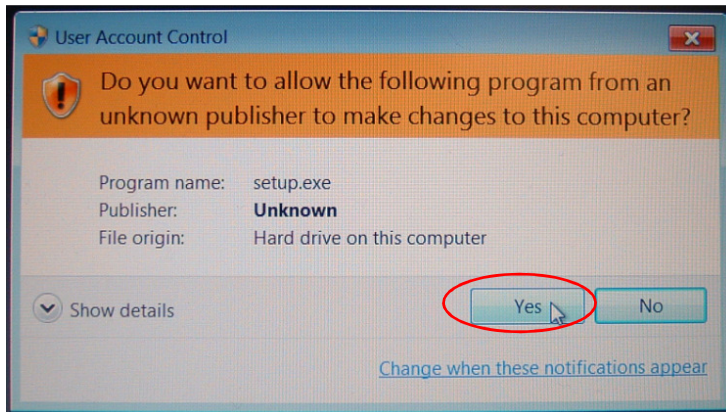


2. Double click on the setup.exe file in the ECCT Advanced Features directory to begin installation.

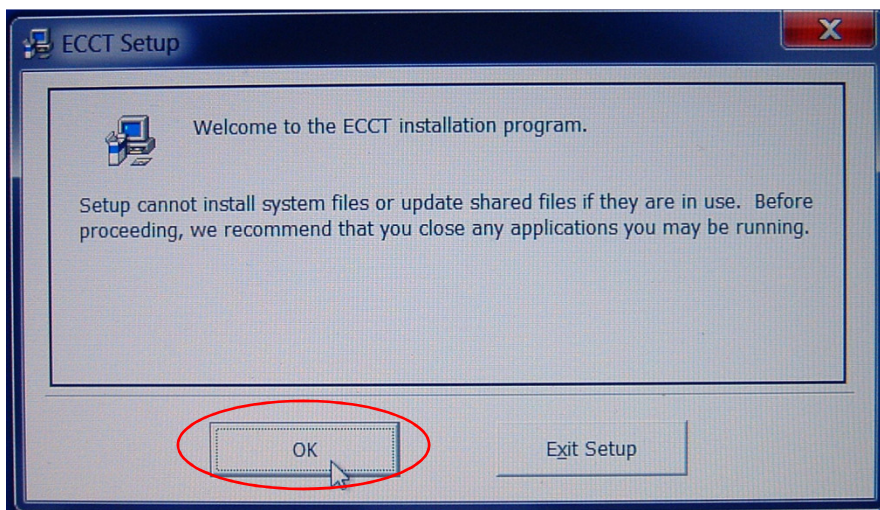


ECCT Software Installation Instructions

3. Click on Yes

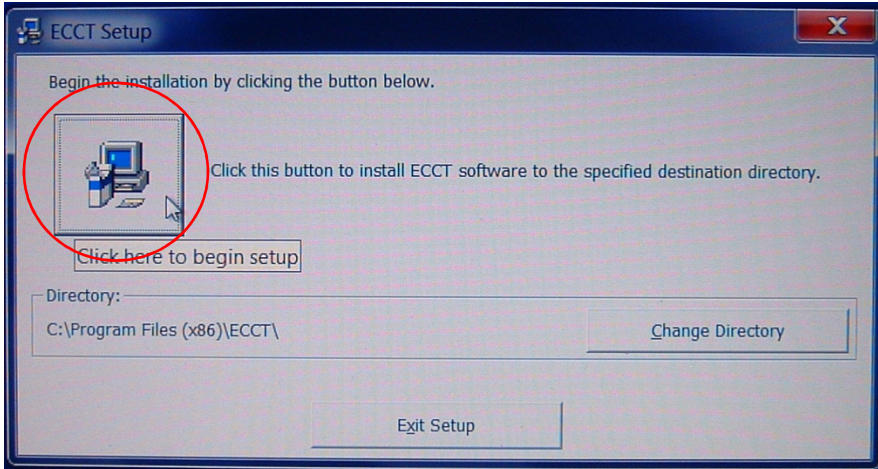


4. Click on OK

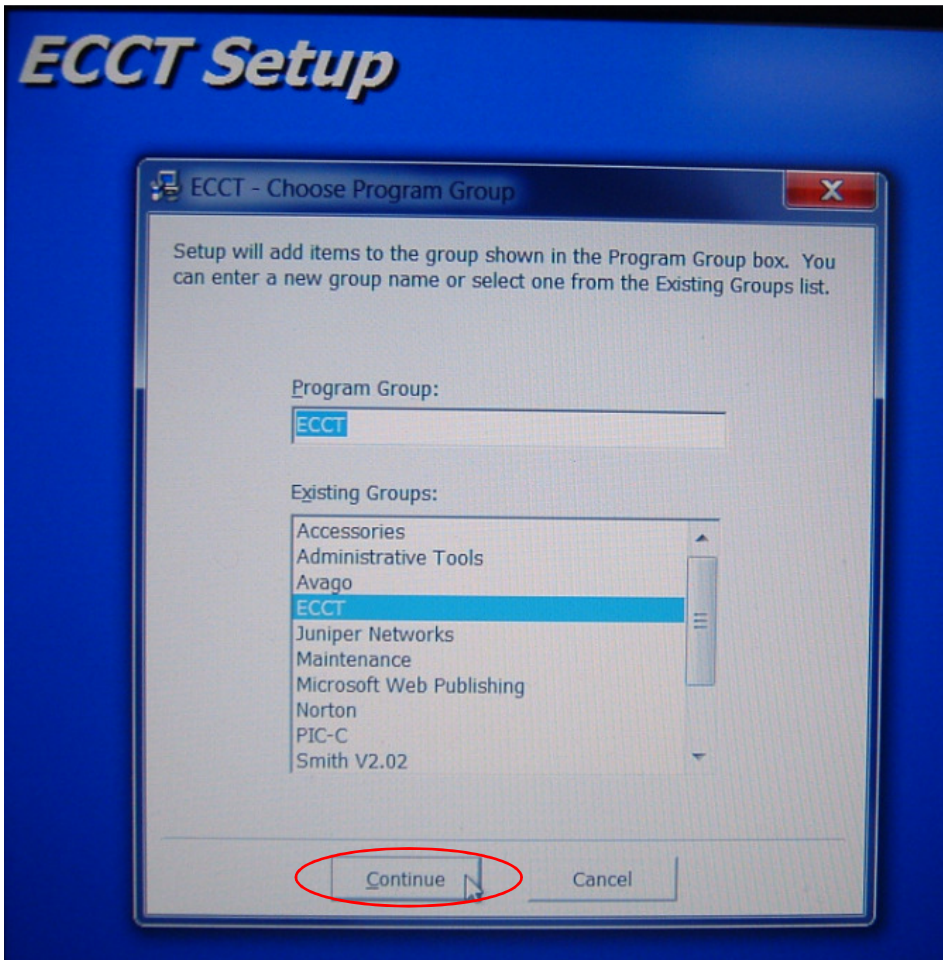


5. Click Computer Icon

ECCT Software Installation Instructions

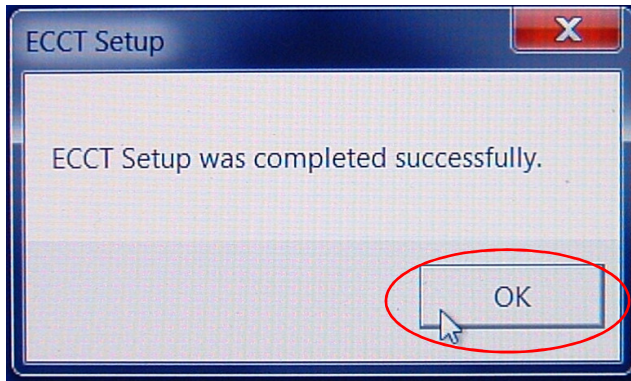


6. Click on **Continue**



7. Click on OK to complete installation.

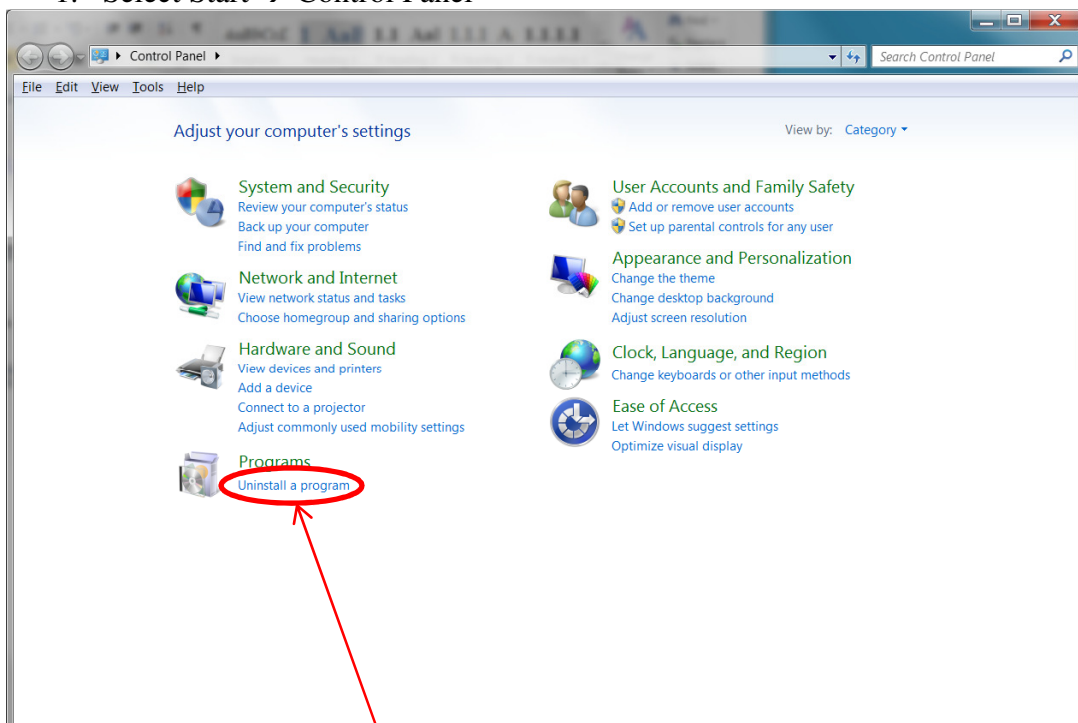
ECCT Software Installation Instructions



8. You are now ready to begin using your ECCT Software.

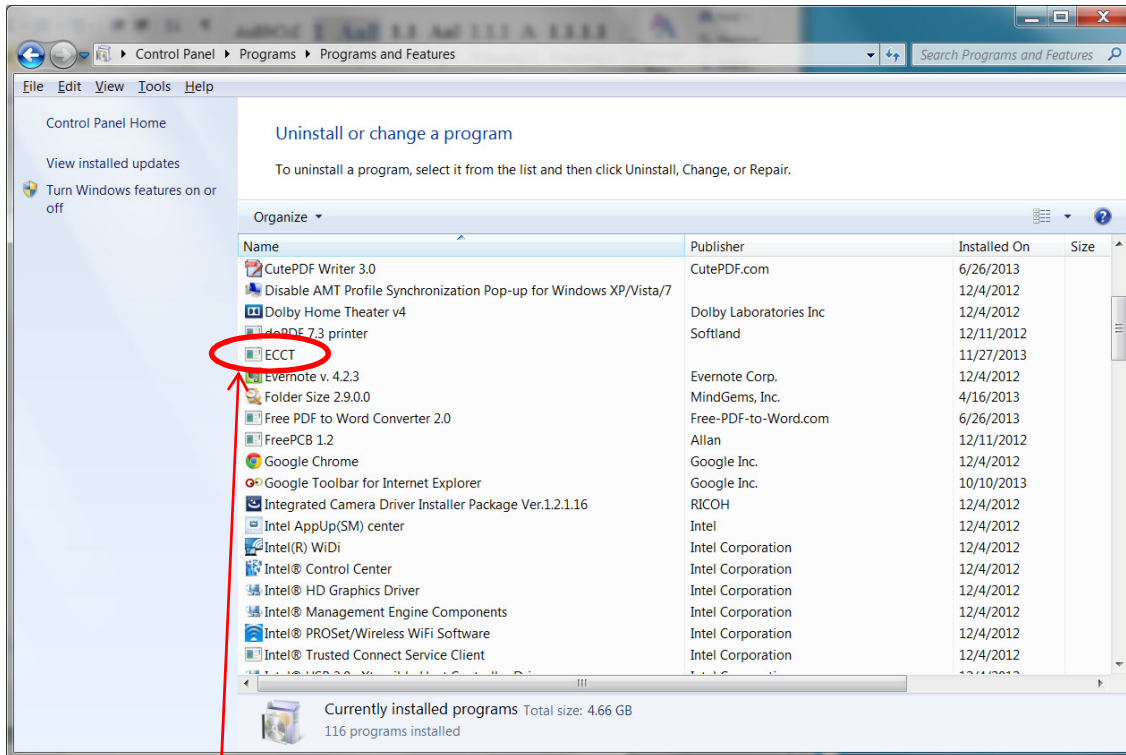
4 Uninstalling ECCT Advanced Features Software

1. Select Start → Control Panel

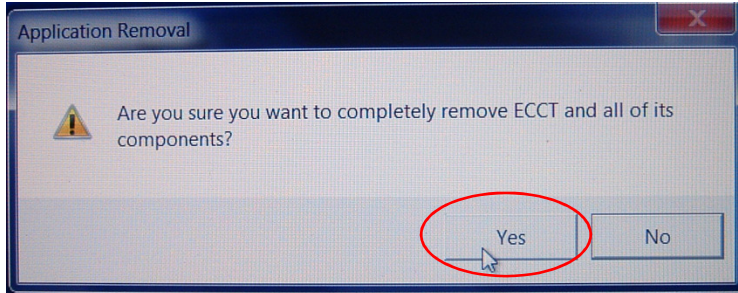


2. Select Uninstall a program

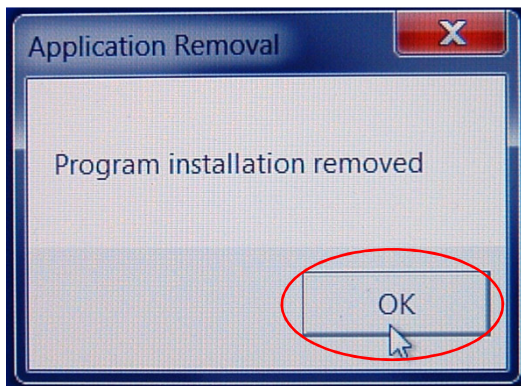
ECCT Software Installation Instructions



3. Select ECCT
4. Select Yes



5. Select OK to complete removal of ECCT Advanced Features Software



ECCT Software Installation Instructions

5 Computer Cable Installation Procedure for Windows 10

Plug the ECCT 12VDC adapter plug into the ECCT then plug the AC adapter into the wall outlet. Turn on the ECCT power by pressing the SELECT / (power) button **and hold for 5 seconds**.

Connect the computer cable to the ECCT and a spare USB port on your PC.

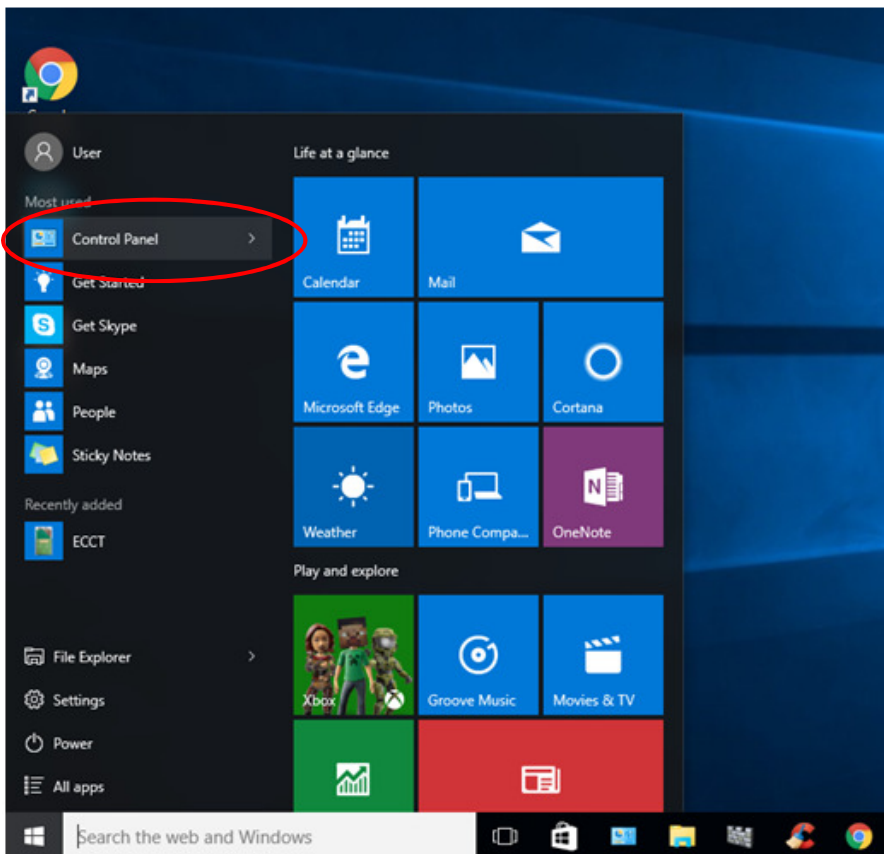
Windows 10 will automatically connect to the Windows Update website and install the suitable driver if your PC has an active internet connection.

IMPORTANT! If you do not have your PC connected to the internet or the driver is not automatically found and installed then you will have to download and follow the manual computer cable installation procedure from the www.modeltecct.com website.

6 COM Port Setting for Windows 10

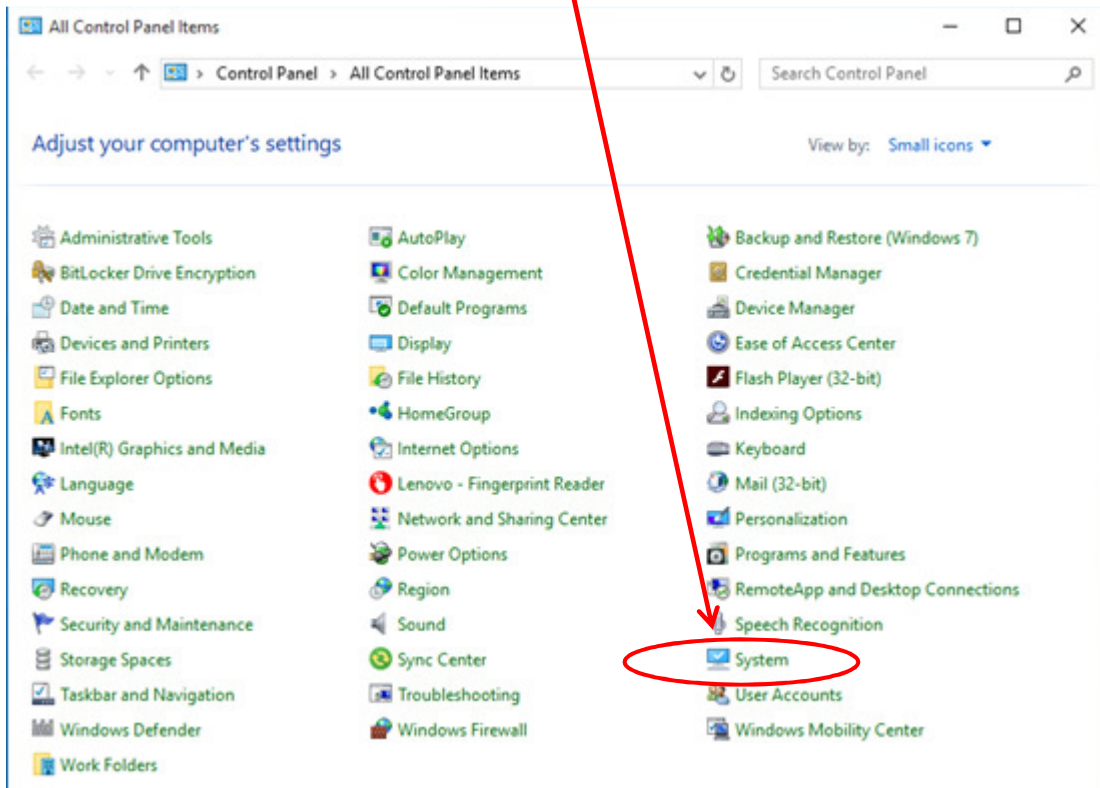
The computer cable must be assigned to COM4 to communicate with the ECCT after the driver has been installed in section 1. Check the COM port setting as follows:

Press the Windows start button to bring up the start menu and select “Control Panel”.

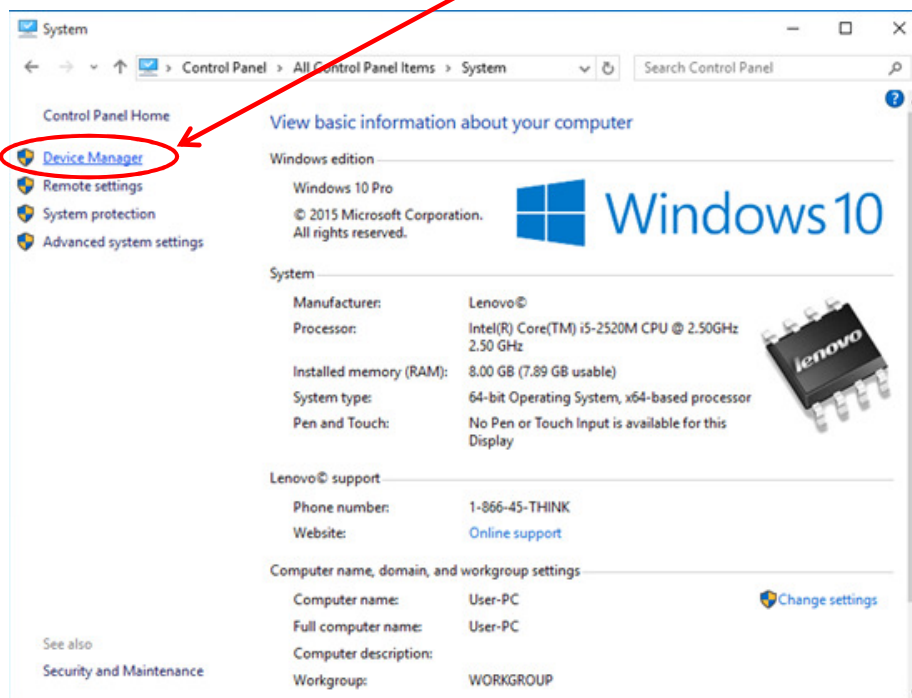


ECCT Software Installation Instructions

From the Control Panel window select **System**



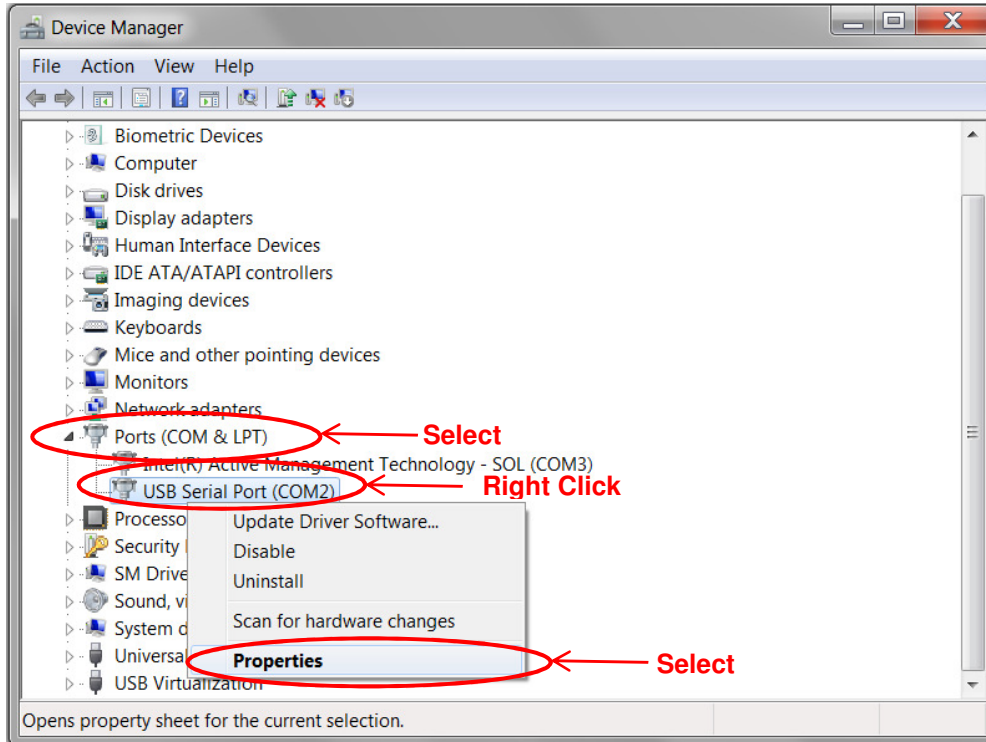
At the next screen select **Device Manager**:



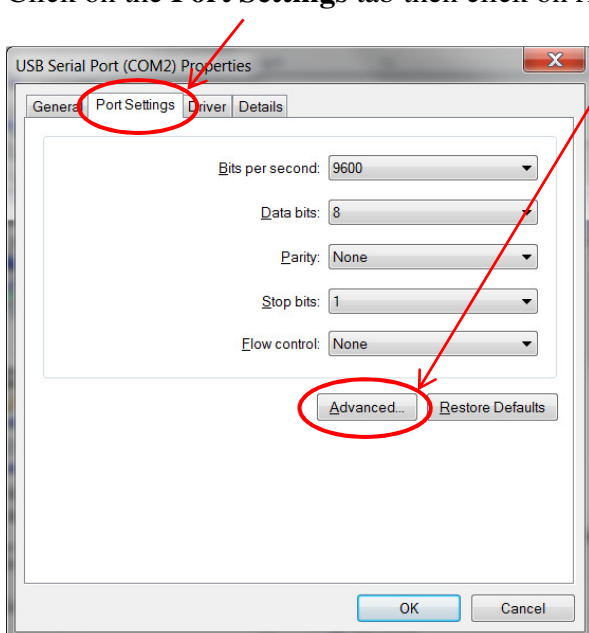
ECCT Software Installation Instructions

Scroll down to Ports (COM & LPT) and look for **USB Serial Port (COM4)**. If the port assignment is other than: **USB Serial Port (COM4)**, proceed as follows to change the port assignment to (COM4).

Right click on **USB Serial Port** and select **Properties**



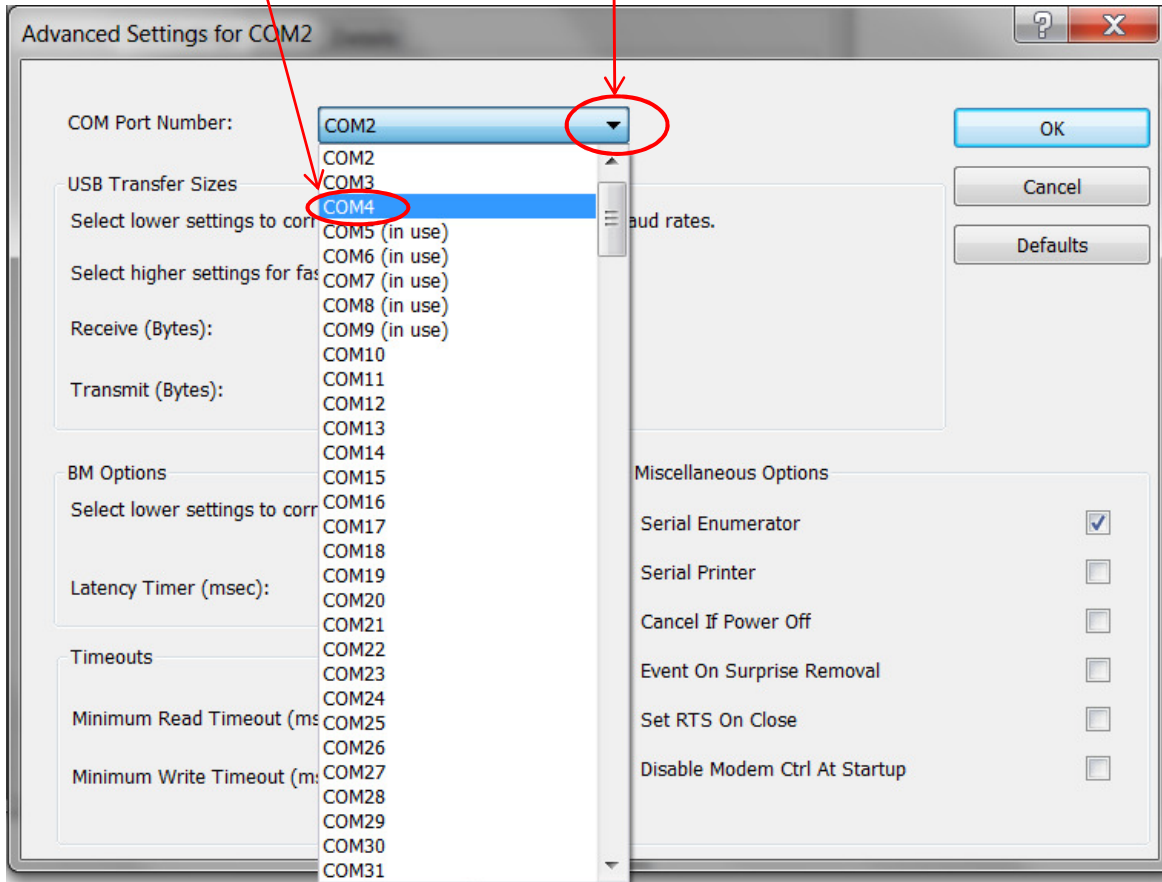
Click on the **Port Settings** tab then click on **Advanced...**



ECCT Software Installation Instructions

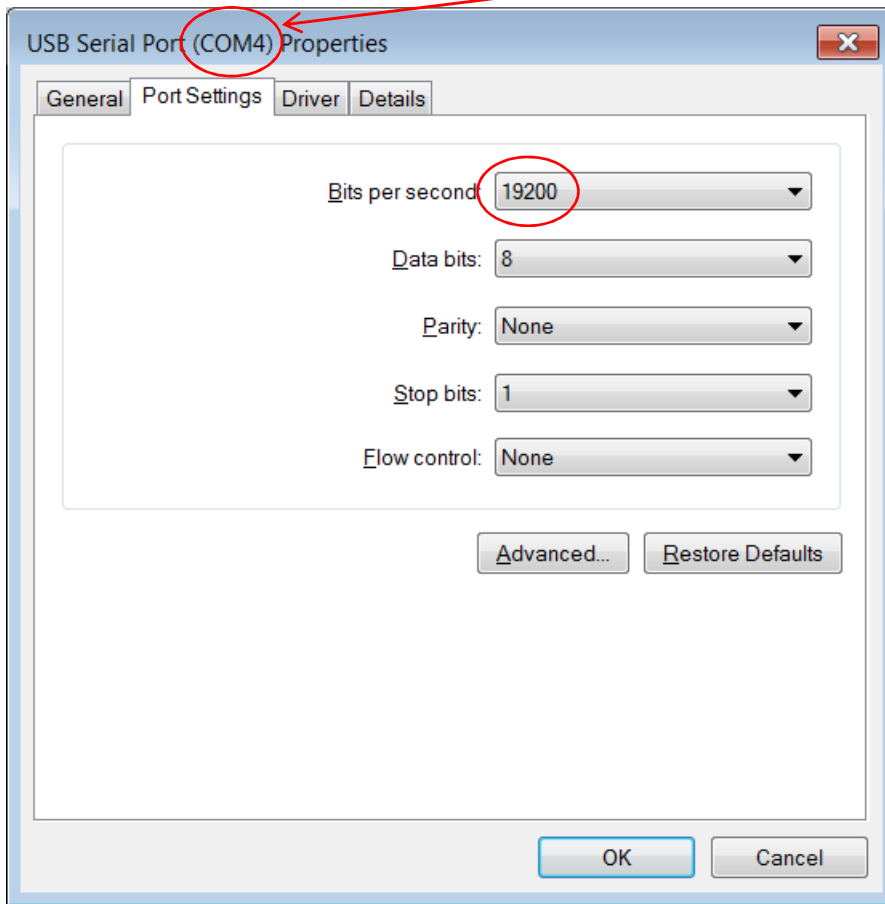
Click on the COM Port Number: drop down box

Then select **COM4** then click on **OK**



ECCT Software Installation Instructions

The Advanced menu will close and the USB Serial Port should now be show (COM4).



Check these values are the same as shown.

If not, change the values as indicated,

then click OK

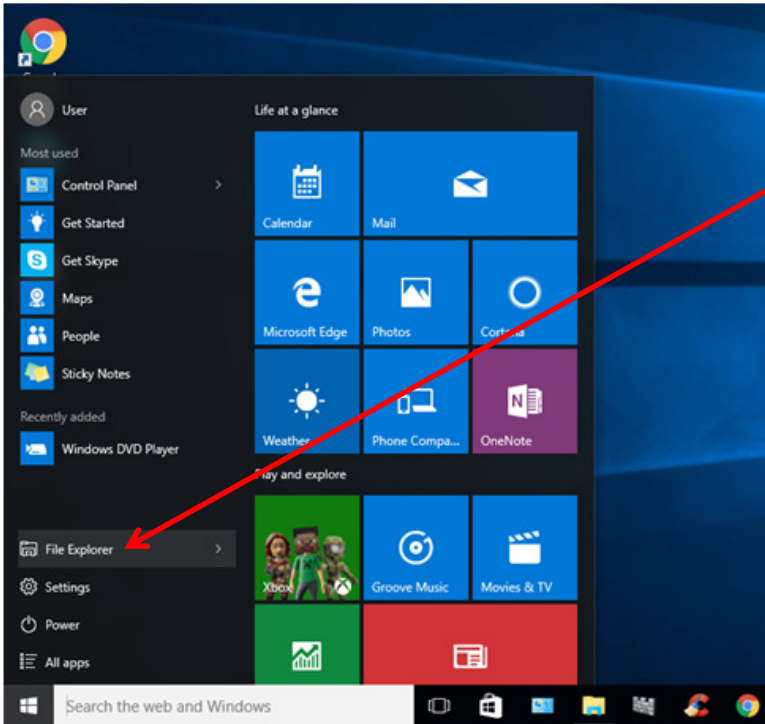
Make sure that Bits per second: is set to **19200**

Click on **OK** to complete ECCT Computer Cable Installation Procedure.

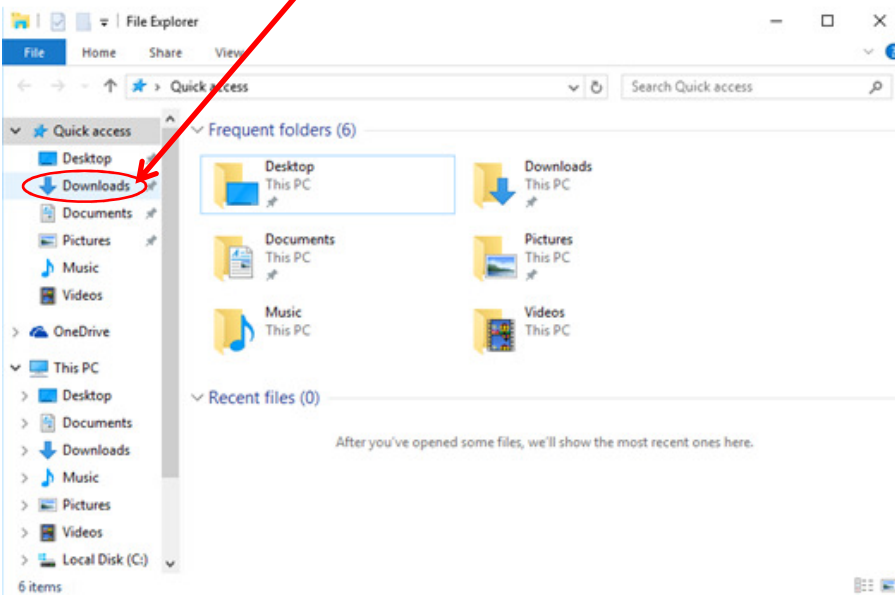
You are now ready to load the ECCT Advanced Features Software.

7 ECCT Advanced Features Software Installation – Windows 10

9. Open File Explorer by clicking on the Windows Start button and selecting File Explorer

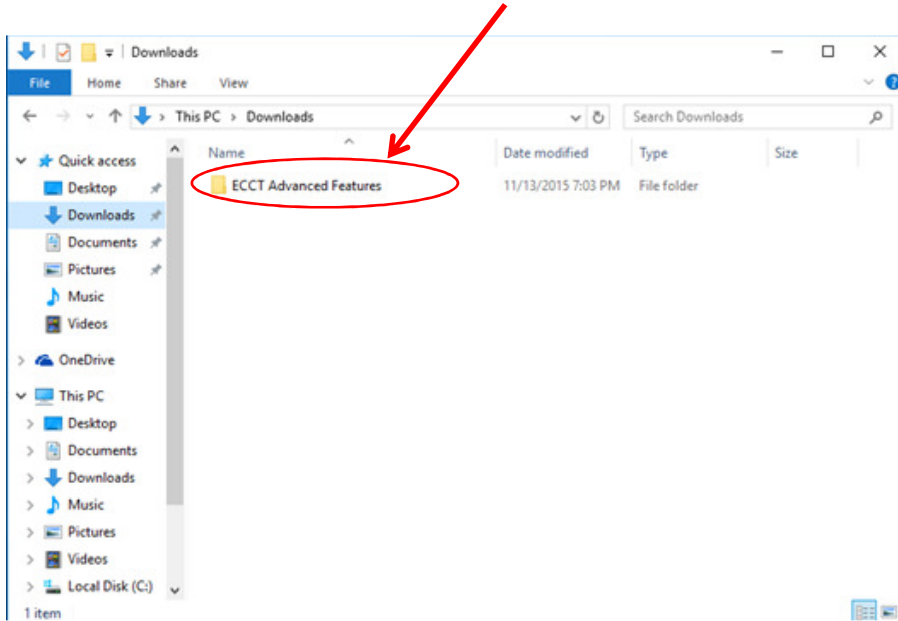


10. Select the **Downloads** directory

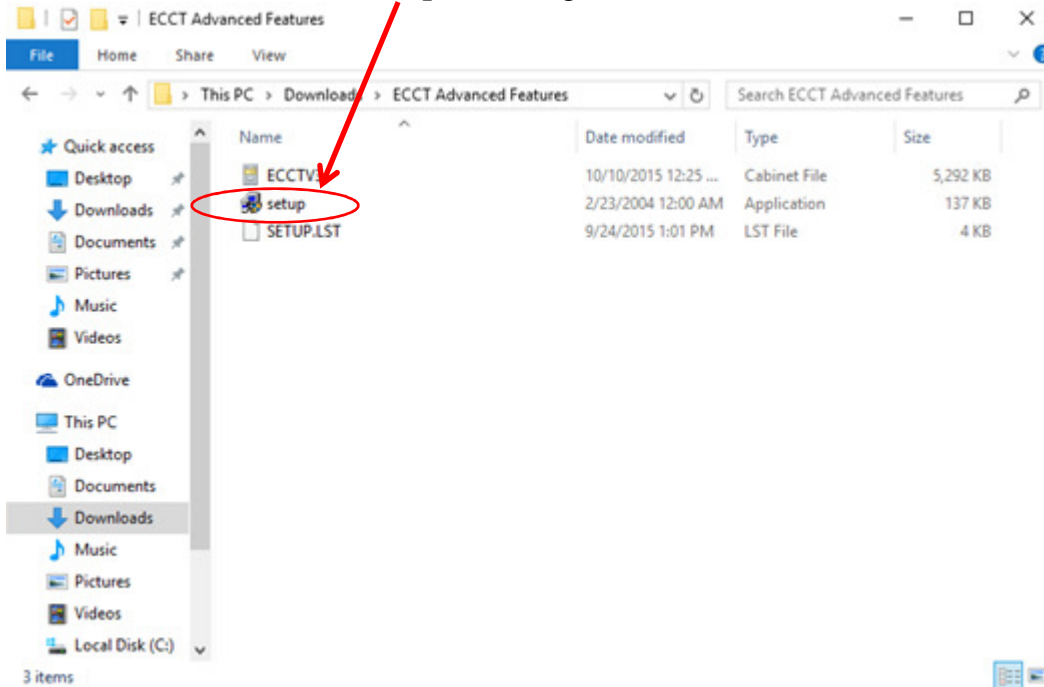


ECCT Software Installation Instructions

11. Open the **ECCT Advanced Features** directory by double clicking on it

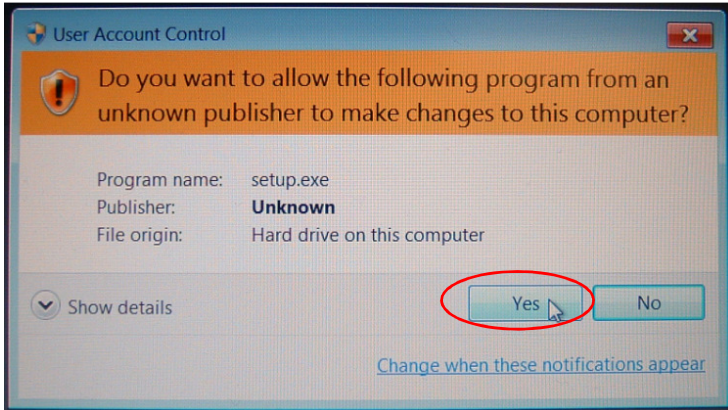


12. Double click on the **Setup** file to begin ECCT Advanced Features Installation

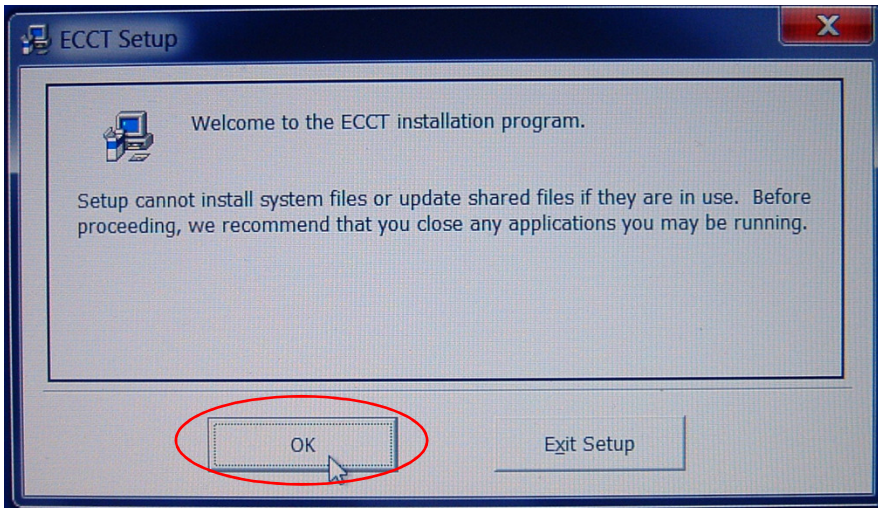


ECCT Software Installation Instructions

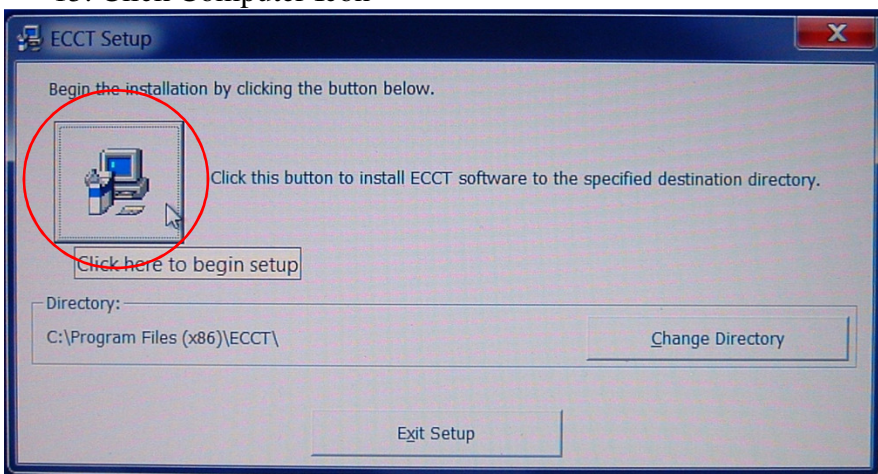
13. Click on Yes



14. Click on OK

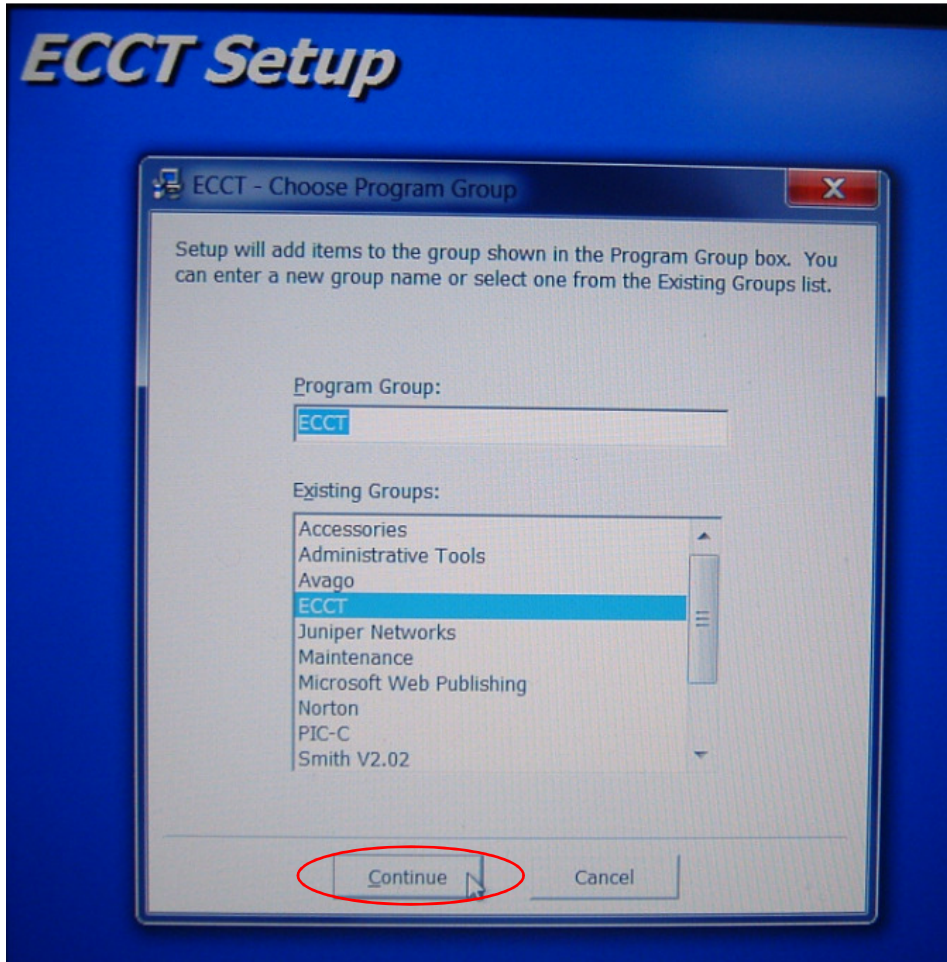


15. Click Computer Icon

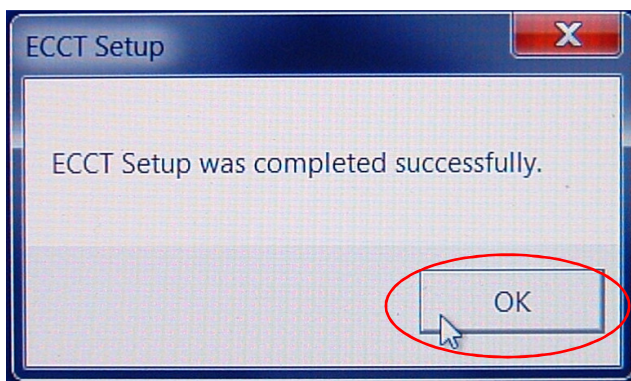


ECCT Software Installation Instructions

16. Click on **Continue**



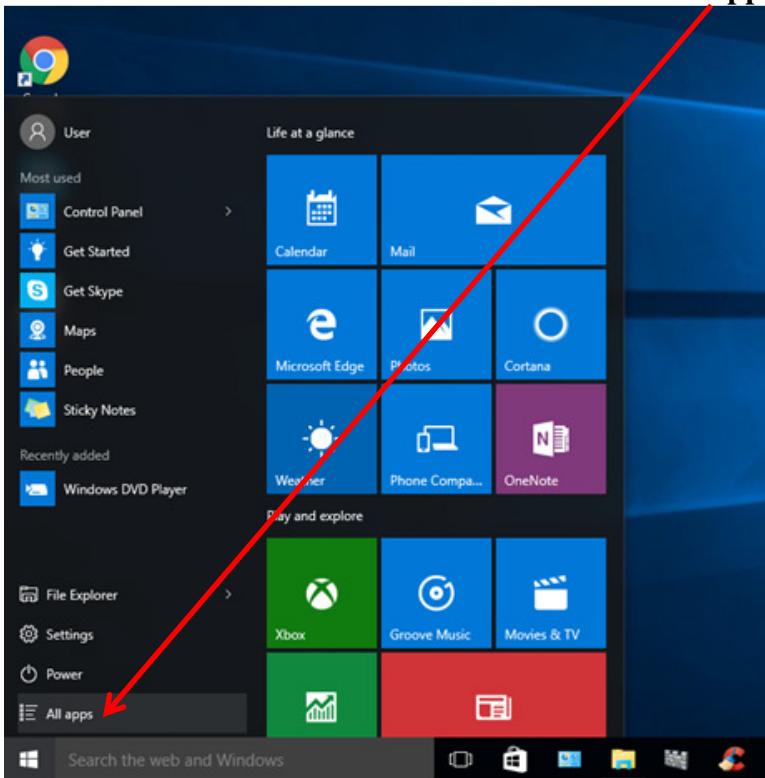
17. Click on **OK** to complete installation.



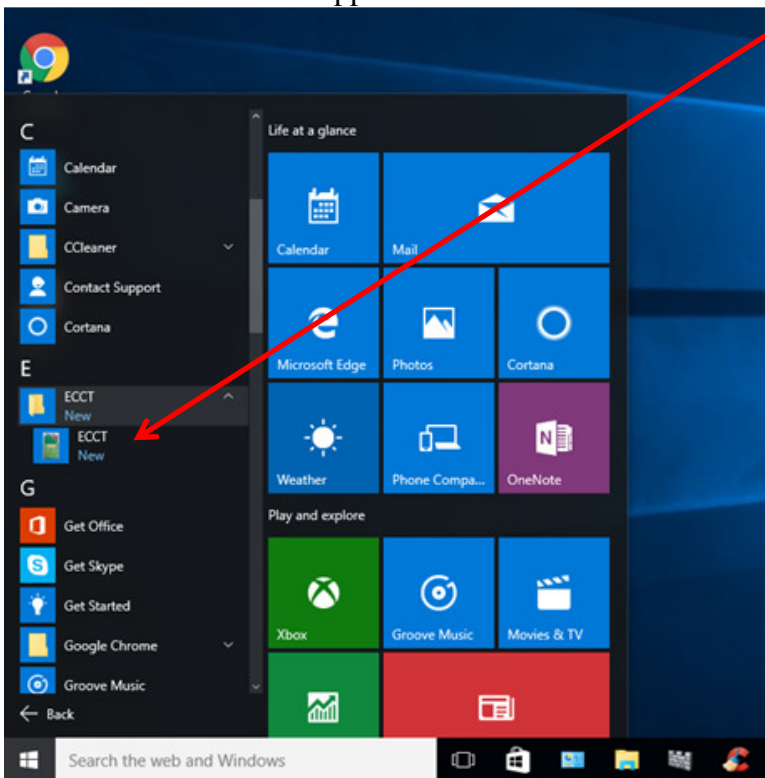
18. You are now ready to begin using your ECCT Software on Windows 10.

ECCT Software Installation Instructions

19. Press the Windows Start button and select **All Apps**



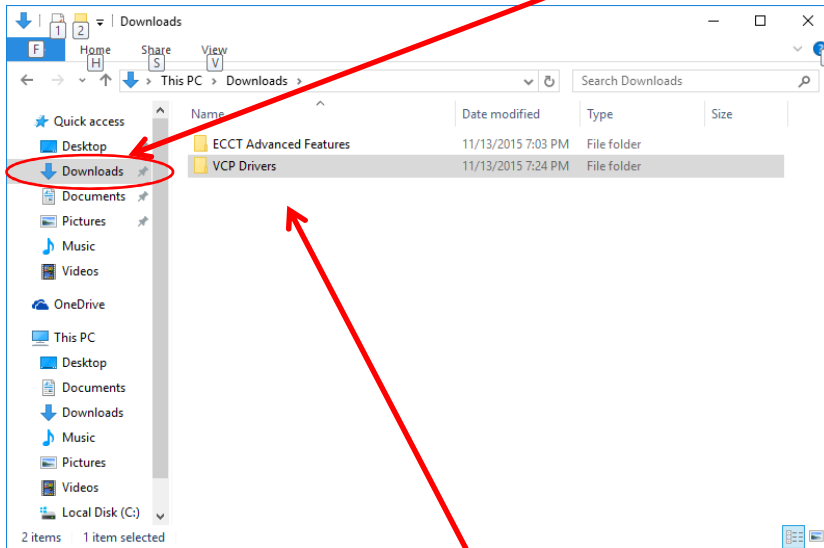
20. Scroll down the Apps list to the **E** section and select **ECCT** to start the ECCT Software



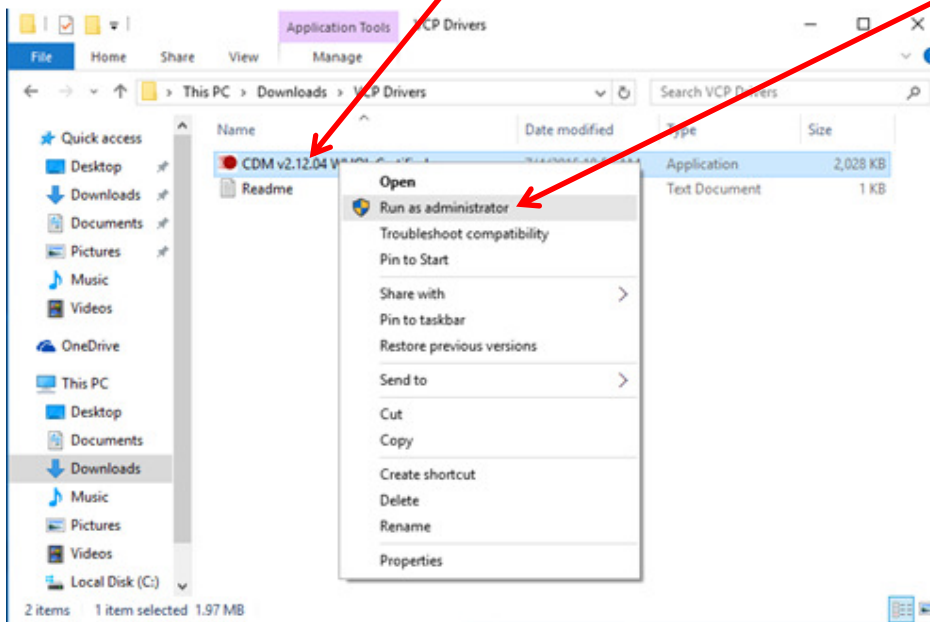
ECCT Software Installation Instructions

8 Manual Driver Installation – Windows10

1. Plug the ECCT 12VDC adapter plug into the ECCT then plug the AC adapter into the wall outlet. Turn on the ECCT power by pressing the SELECT / (power) button **and hold for 5 seconds**.
2. Connect the computer cable to the ECCT and a spare USB port on your PC.
3. Download the ECCT driver from the www.modeltecct.com website and save in the **Downloads** directory.
4. Open File Explorer and navigate to the **Downloads** directory.

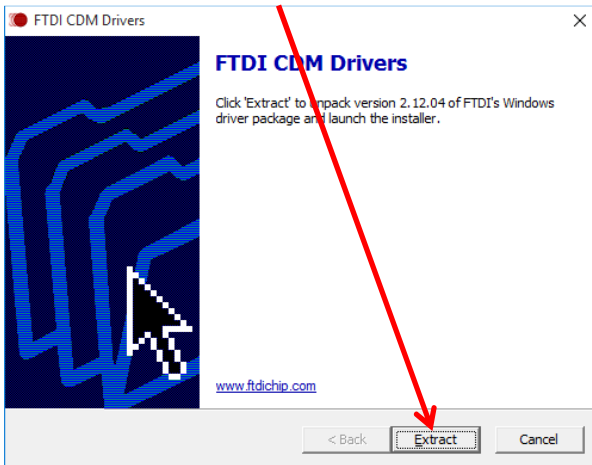


5. Double click on the **VCP Drivers** directory
6. Right Click on file: **CDM v2.12.04 WHQL Certified** then click on **Run as administrator**

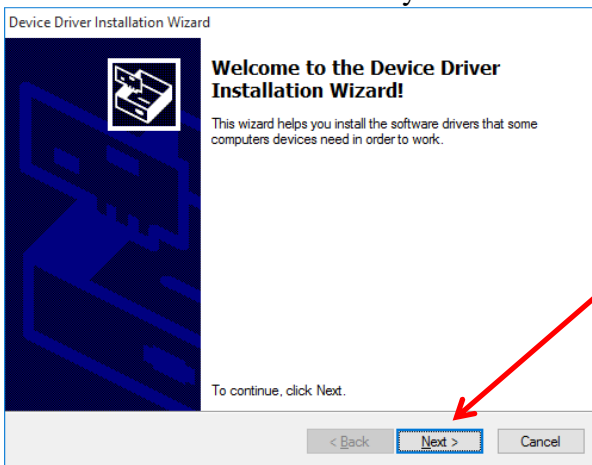


ECCT Software Installation Instructions

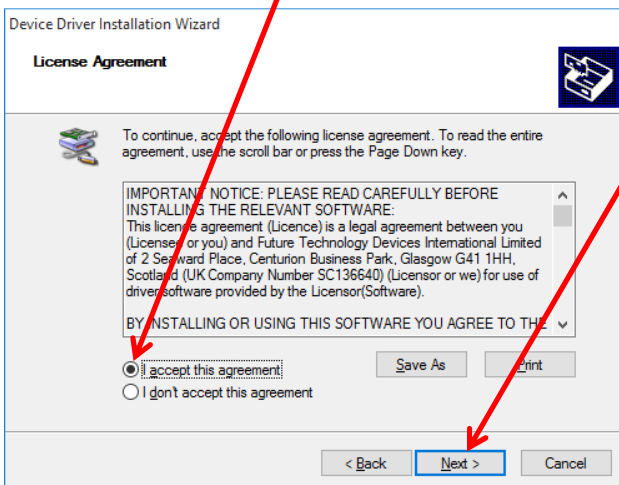
7. Click on **Extract**



8. Answer Yes if asked if you want to run this program then press **Next**

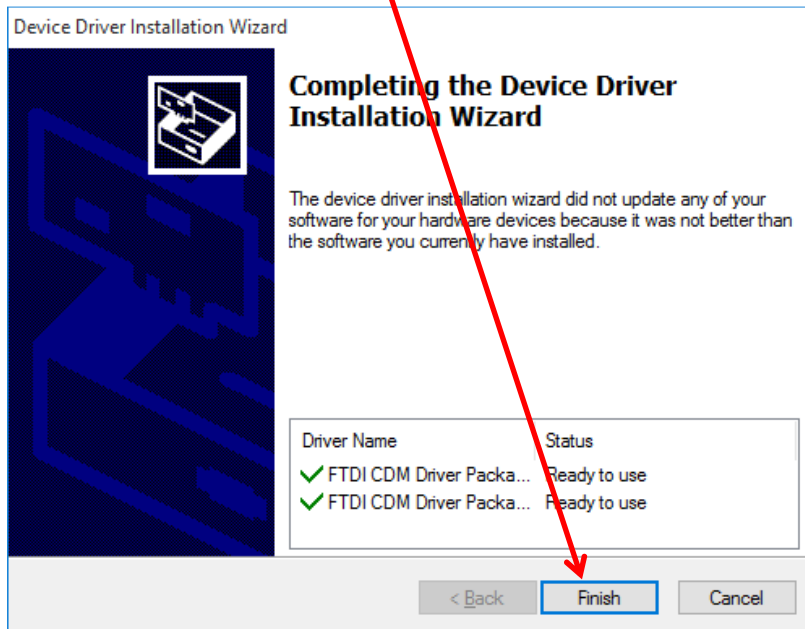


9. Click on: **I accept this agreement**, then click on **Next**



ECCT Software Installation Instructions

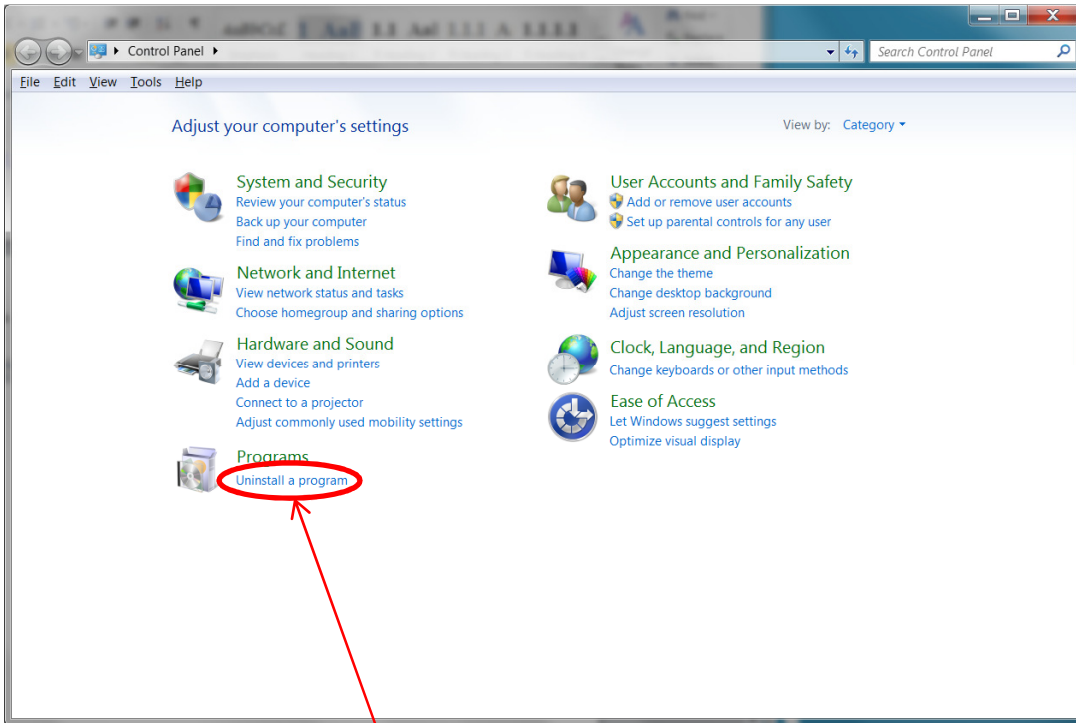
10. Lastly, click on **Finish** to complete ECCT driver installation



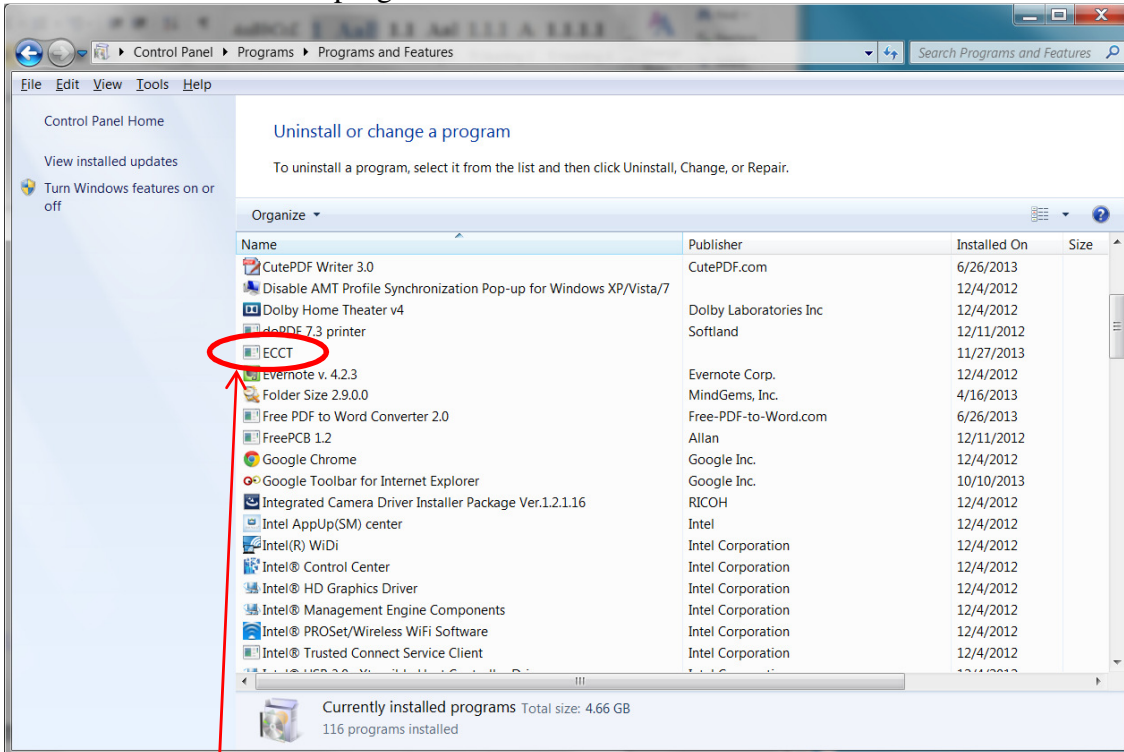
This completes ECCT Driver Installation.

9 Uninstalling ECCT Advanced Features Software – Windows7

6. Select Start → Control Panel



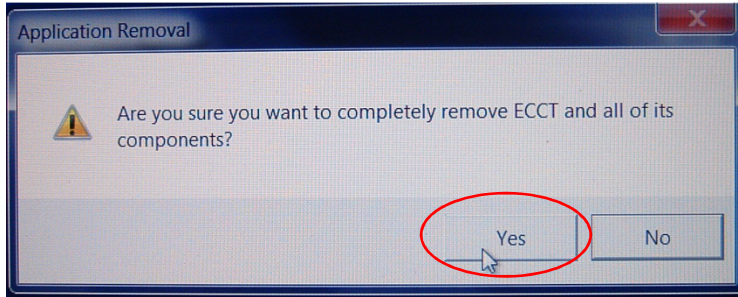
7. Select Uninstall a program



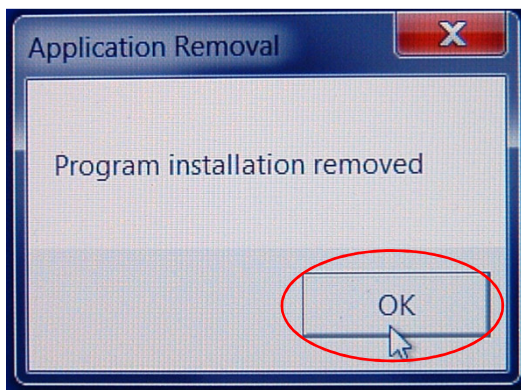
8. Select ECCT

ECCT Software Installation Instructions

9. Select Yes



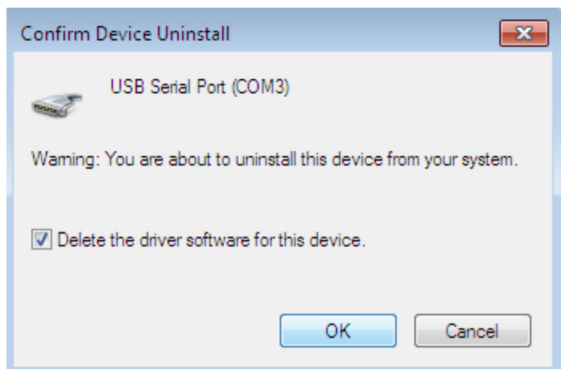
10. Select OK to complete removal of ECCT Advanced Features Software



ECCT Software Installation Instructions

10 Uninstalling ECCT Drivers

The ECCT driver can be removed using the Device Manager by simply right-clicking on the mouse and selecting "Uninstall". This will delete the associated registry entries for that device only. Windows 7 provides an automatic method to delete driver files via a check box to "Delete the driver software for this device" on the uninstall dialog box as illustrated below.



This stage is done twice. Once for the device under Ports(COM & LPT) and once for the device under Universal Serial Bus Controllers.