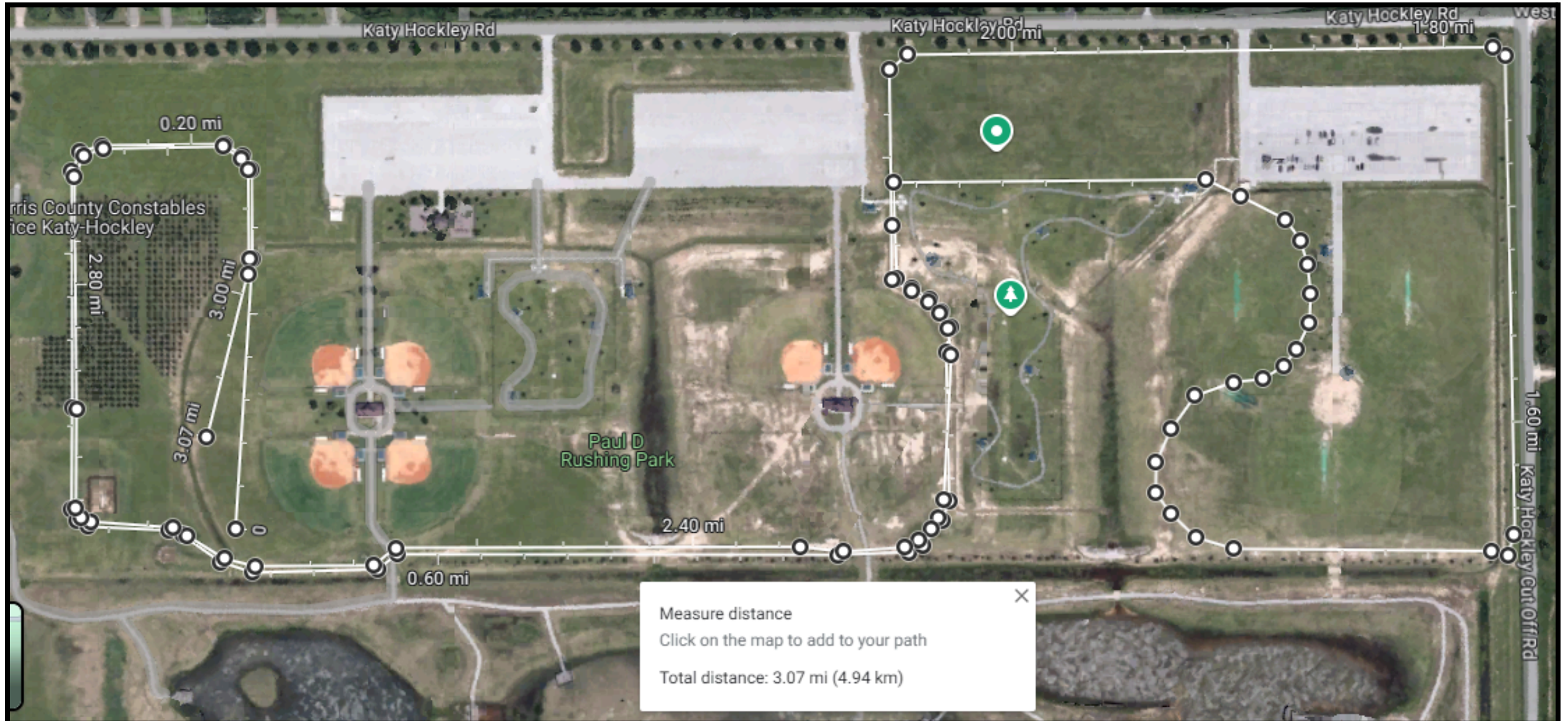


# 19-6A Cross Country Course 2024

5K





2 Mile



## Course Notes:

Course measures \_\_\_\_ (will be within 50' of 16,404')

- Start line is even with two softball light poles on two southernmost fields.
- Finish line is even with blue utility pole even with SW field 1st base line.
- Course along start will narrow to cross the ditch at the shallowest section, just west of the cart bridge (771' from start).
- Course stays just inside of mid-field line on soccer fields.
- Southern line of course stays far enough north of trees to avoid roots and low spots.
- Course curves at 3rd tree beyond second cart path.
- Runners will cross ditch near right field of westernmost field.
- 1 mile marker is a few feet past sidewalk entrance to dog park.
- Course runs outside of treeline along Katy Hockley Cutoff.
- Runners will cross entrance to parking lot. Manned by KISD PD.
- 2 mile marker is about halfway between driveways to two parking lots.
- Upon return, the runners will cross the ditch just past the sidewalk entrance to dog park (1 mile marker).
- Runners will return on the opposite side of the ditch ([see detail](#)). This is important for the 2 mile course.
- Runners will follow the course back to the start.
- When runners cross the final ditch headed to the finish line, they will veer slightly to the right to cross the finish line.