

2023



**CROSS COUNTRY
State Qualifiers'
Handbook**

UNIVERSITY INTERSCHOLASTIC LEAGUE

STATE QUALIFIER HANDBOOK 2023

Congratulations on your team’s advancement to the Cross Country State Meet. This handbook has been prepared to serve as a guide to administrators and coaches and provide information about the State Meet. You will find this material valuable as you prepare for the meet and upon your arrival to the meet.

Questions concerning UIL Cross Country State Meet should be addressed to the following staff members:

Ray Zepeda (UIL Director of Athletics)
(281) 594-9893

Joseph Garmon (Meet Director)
(361) 244-0497
jgarmon@uiltexas.org

Hannah Higgins (Event Coordinator)
(512) 232-4971
hhiggins@uiltexas.org

TABLE OF CONTENTS

Meet Information	3-5
Meet Schedule	5
Broadcast Information	6
Run-Out Procedure	6
Course Maps	7
School/Spectator Parking	8-9
Event Area Map	10

STATE MEET INFORMATION

State Venue Location: Old Settlers Park- 3300 E Palm Valley Blvd, Round Rock, TX 78665

State Qualifiers: The results from your regional meet serves as certification to the UIL State Meet. **There are no entry fees for teams or individuals at the State Meet.**

- Schools must scratch an individual or change team members utilizing the UIL forms ONLY. **For any changes made after October 31, please make them on-site during packet pick-up.**
 - Team Substitution Form: <https://www.uiltexas.org/machform/view.php?id=311305>
 - Individual Scratch Form: <https://www.uiltexas.org/machform/view.php?id=311841>
- For any spelling or grade changes to be included in the program, please email Hannah Higgins (hhiggins@uiltexas.org). **Please note that any changes made after 4:00pm, October 27th WILL NOT be included in the State Meet Program.**

Packet Pick-up: School packets will be available for pick-up at the blue UIL tent in the designated event area **at the designated times listed below.** Schools MUST enter off Old Settler's Blvd & Aten Loop or Rosebud Ln & TC Oatts. The main event area parking lot will **not** be available for buses and school vehicles to park.

- 1A, 3A & 5A Pick-Up – Thursday, November 2nd from 12:00pm to 2:00pm or Friday, November 3rd prior to race.
- 2A, 4A & 6A Pick-Up – Friday, November 3rd from 1:00pm to 3:00pm or Saturday, November 4th prior to race.
- **NOTE – Only coaches may come to packet pick-up tent (Athletes will be allowed on course for warm-up during their scheduled conference packet pick-up time only).**

School/Team Parking: School parking will enter the park off of **Old Settler's Blvd & Aten Loop or Rosebud Ln & TC Oatts.** Parking passes will be required to enter this area on the day of the meet (see map for details). At the conclusion of competition, school vehicles MUST exit the same way they entered, off Aten Loop.

Spectator Tickets: Tickets for the State Meet will go on sale September 20th @ 9:00am. Tickets will be sold by car. The price paid by car for parking will be considered entry into the event (see parking prices and breakdown below). It is recommended to purchase tickets online in advance. **NO CASH** transactions will be available. Tickets may be bought on site with credit/debit card **ONLY.**

- **\$25.00 – Vehicle with up to 2 persons**
- **\$40.00 – Vehicle with more than 2 persons**
- **Purchase tickets here - <https://uiltexas.hometownticketing.com/embed/all?teams=15>**

Spectator Parking will have the choice of TWO entrance/exit points (north OR south). Spectators can enter the park beginning at 7:30am. There will be NO shuttle buses that will take spectators to the main event area.

- North – Off Old Settlers Blvd to Kenney Fort
- South – Off Hwy 79 to Harrell Pkwy

Contestant Bibs: All contestants must wear issued bibs attached to the front of their jersey. Safety pins are provided to attach the bib. Timing chips are attached to the runner's bib. Please make sure the bib is securely fastened to the **front** of the uniform top.

School Tents/Staging: School teams may warm-up in the designated area behind the main event area by the Tennis Courts (see map). Schools may set-up TENTS on the east and west side of Aten Loop (see map).

Competition Course: Warm-ups and/or walking the course for athletes will **ONLY** be allowed for the 2023 State Meet during the designated packet pick-up time for that conference. Schools that get on the course outside of this time may be subject to disqualification. There will be a designated warm-up area just **NORTH** of the main event area or on the roads that are marked as 'CLOSED' (see map for details).

Trainers: Athletic trainers will be available at the tent located inside the finish line area. EMT personnel will be onsite for emergencies.

Officials: The UIL Staff will appoint a meet referee. National Federation Rules for Cross Country will be followed. Decisions of the meet referee are final. Protests must be submitted in writing to the meet director to be reviewed by the jury of appeals.

Games Committee: The meet games committee will be appointed by the Cross Country Director prior to the start of the competition. A jury of appeals will be utilized when needed.

*****Watches: NO WATCHES OR ANY OTHER ELECTRONIC DEVICE OF ANY TYPE WILL BE ALLOWED. This is due to potential interference with the timing system.**

Jury of Appeals: The Jury of Appeals will serve as the final board of appeals. The Jury of Appeals will include the UIL Cross Country Director, UIL Athletic Director, State Meet Referee, and any other meet official appointed by the meet director. See Jury of Appeals process below.

Appeal/Protest Process

FOR: Misapplication of the rules

- For an appeal/protest to take place: (must be submitted within 30 minutes after the announcement of event results)
 1. Must be filed/presented in written form (on UIL protest form) by the school coach after **first** appealing to the referee
 - i. ***“UIL Protest Form”*** can be obtained at the UIL Tent
 2. Must include competitor’s name, school, and bib number.
 3. Must include the rule in question.
 4. A brief description of the situation or ruling being appealed.

*****No video review will be allowed for misapplication of rules appeal.***

FOR: Correction of clerical or team scoring errors

- Must be protested/appealed within 30 minutes after the announcement of event results.

*All appeals/protests, must begin with a verbal appeal to the Meet Referee.

Starting Area: Contestants MUST be **“competition ready”** (warm-ups removed, dressed in a legal uniform, spikes on) upon arrival to the starting area.

- Athletes scheduled to compete must report **as a complete team** at least 20 minutes prior the scheduled start time.
- **NEW in 2023** – **ONE** wristband will be issued to each school/team. The wristband MUST be worn by the Head Coach and will allow access to the Start Line Area. No one besides athletes with a bib and coaches with a wristband will be allowed access to the Start Line Area.
- Starting box assignments established by the UIL Staff through a seeding process are included in the team packet.
- The command shall be, “Runners Set;” and when all competitors are steady, the pistol shall be fired. In an unfair start, the starter or back-up starter shall recall the runners by firing the pistol. If a runner falls during the first 100m due to contact with another runner, the race shall be recalled by firing the pistol.
- Parents, athletic trainers, coaches and managers are prohibited from accessing the starting area and are only allowed outside the running course throughout the meet.

Finish Chute: Chute inspectors will help supervise the runners after they enter. Spectators are prohibited inside the chute.

Results: Final results will be posted at the meet site. Official results will be posted on the UIL Website.

<http://www.uil texas.org/cross-country/state/cross-country-state-meet-qualifiers-results>

Awards: Medals will be presented approximately 30 minutes after each conference’s race (boys and girls) and after official results have been posted.

- The first, second, and third-place team will receive a trophy.
- Seven team members from the first, second, and third-place teams will receive medals.
 - One coach from the winning teams will receive a medal
 - Schools with award winning teams may purchase additional medals for team alternates.
- The first ten individual finishers in each race will receive medals. Only the top 3 individual finishers will receive a photo at the awards tent.

Spectators: Spectators are only allowed to position themselves outside the course area. Schools should distribute this information to parents and spectators prior to the state meet.

Programs: For 2023, the State Cross Country program will be digital. [View the program here.](#)

Merchandise: State Cross Country merchandise will be available on Thursday during packet pick-up and during the State Meet. Merchandise will be located in between the parking area and the course area.

Restrooms: Portable toilets will be available to the public and contestants.

Food and Beverage: Food and beverages will be available at the concession tent located outside of the Main Event area.

STATE MEET SCHEDULE

All events will run at their scheduled time. EXCEPTION: The Games Committee in collaboration with the referee may suspend the meet due to an emergency, such as hazardous weather conditions.

Thursday, November 2nd

TIME	CLASS	DIVISION	EVENT
12:00 PM- 2:00PM	5A, 1A, 3A		Packet Pick-up

Friday, November 3rd

TIME	CLASS	DIVISION	EVENT
8:25 AM			National Anthem
8:30 AM	5A	Girls	5K
9:10 AM	5A	Boys	5K
10:10 AM	1A	Girls	3200m
10:40 AM	1A	Boys	5K
11:40 AM	3A	Girls	3200m
12:10 PM	3A	Boys	5K
1:00 PM – 3:00 PM	6A, 2A, 4A		Packet Pick-up

Saturday, November 4th

TIME	CLASS	DIVISION	EVENT
8:25 AM			National Anthem
8:30 AM	6A	Girls	5K
9:10 AM	6A	Boys	5K
10:10 AM	2A	Girls	3200m
10:40 AM	2A	Boys	5K
11:40 AM	4A	Girls	3200m
12:10 PM	4A	Boys	5K

BROADCAST INFORMATION

UIL Cross Country State Meet to Stream Live on the NFHS Network

The NFHS Network will provide a live two-day broadcast of the 2023 UIL Cross Country State Meet on Friday, November 3 and Saturday, November 4 from Old Settler's Park in Round Rock, Texas.

Fans, family and alumni unable to attend can watch the UIL Cross Country State Meet live online with a subscription [at this link](#). Subscribers can also watch on the go or at home through the NFHS Network mobile app available in the Apple and Google Play Stores, as well as the NFHS Network TV app available on Roku, Amazon Fire or Apple TV.

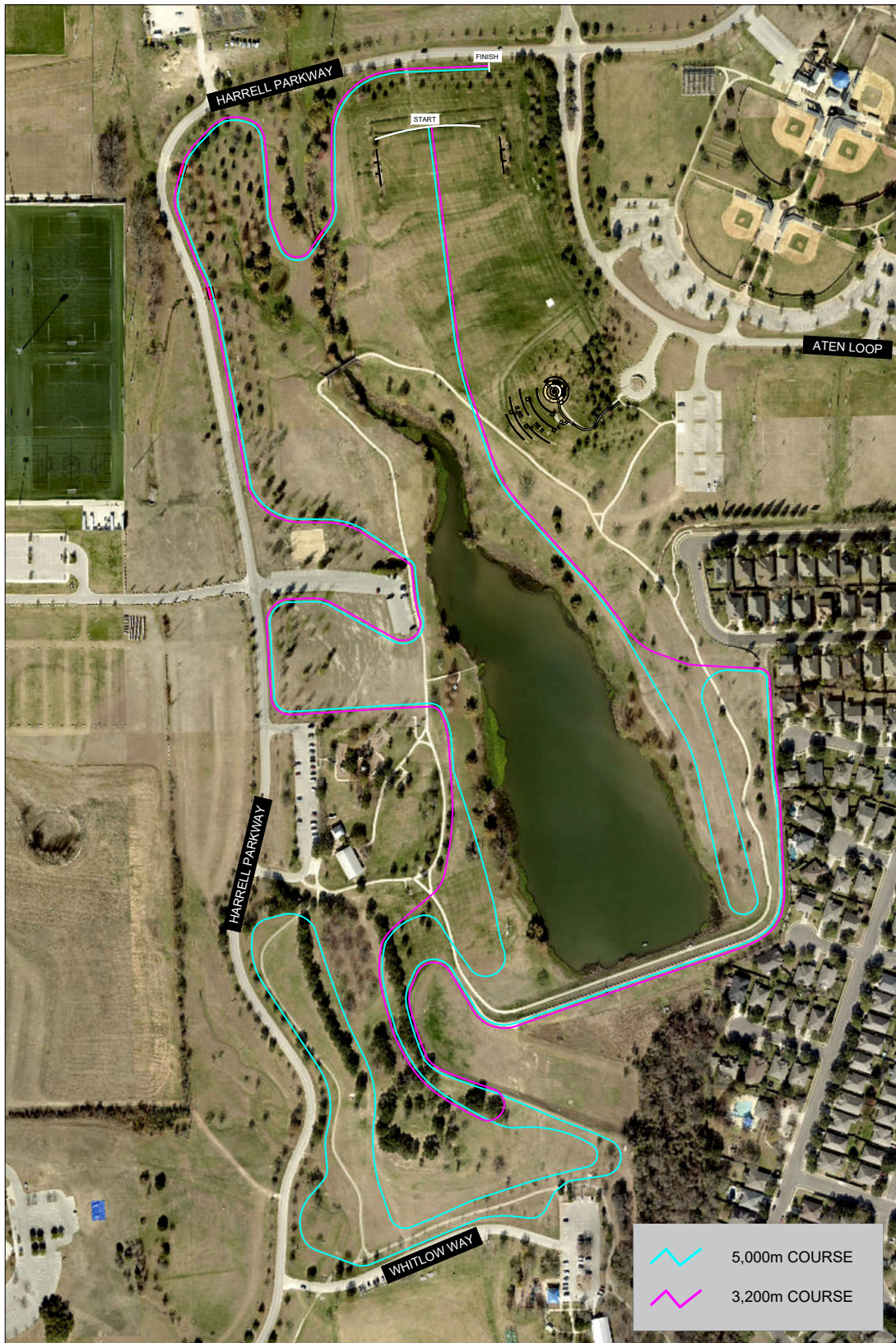
RUN-OUT PROCEDURE

All contestants must report to the start line no later than 20 minutes prior to the race time.

1. Clerks will check each contestant bib number and box assignment.
2. ***“Step – out”*** will occur at a specified time for each contestant which consists of the contestant stepping out of the start box about 3 yards at the time of the announcement of name or team name and raise their hand(s) for recognition.
3. Step – out introduction will proceed as follows:
 - **15 minutes prior** - Announcer will announce individual participants by box assignment beginning with contestants
 - **10 minutes prior** - Announcer will BEGIN announcing school teams by box assignment beginning outside and working according to this schedule:

BOX #	ASSIGNMENT	INTRODUCTION TIME
1	4 TH PLACE TEAM	10 MINUTES PRIOR TO RACE
2	4 TH PLACE TEAM	10 MINUTES PRIOR TO RACE
3	3 RD PLACE TEAM	10 MINUTES PRIOR TO RACE
4	3 RD PLACE TEAM	10 MINUTES PRIOR TO RACE
5	INDIVIDUAL QUALIFIERS	15 MINTUES PRIOR TO RACE
6	2 ND PLACE TEAM	7 MINUTES PRIOR TO RACE
7	2 ND PLACE TEAM	7 MINUTES PRIOR TO RACE
8	INDIVIDUAL QUALIFIERS	15 MINUTES PRIOR TO RACE
9	1 ST PLACE TEAM	6 MINUTES PRIOR TO RACE
10	1 ST PLACE TEAM	6 MINUTES PRIOR TO RACE
11	INDIVIDUAL QUALIFIERS	15 MINUTES PRIOR TO RACE
12	1 ST PLACE TEAM	6 MINUTES PRIOR TO RACE
13	1 ST PLACE TEAM	6 MINUTES PRIOR TO RACE
14	INDIVIDUAL QUALIFIERS	15 MINUTES PRIOR TO RACE
15	2 ND PLACE TEAM	7 MINUTES PRIOR TO RACE
16	2 ND PLACE TEAM	7 MINUTES PRIOR TO RACE
17	INDIVIDUAL QUALIFIERS	15 MINUTES PRIOR TO RACE
18	3 RD PLACE TEAM	10 MINUTES PRIOR TO RACE
19	3 RD PLACE TEAM	10 MINUTES PRIOR TO RACE
20	4 TH PLACE TEAM	10 MINUTES PRIOR TO RACE
21	4 TH PLACE TEAM	10 MINUTES PRIOR TO RACE

STATE COURSE MAPS

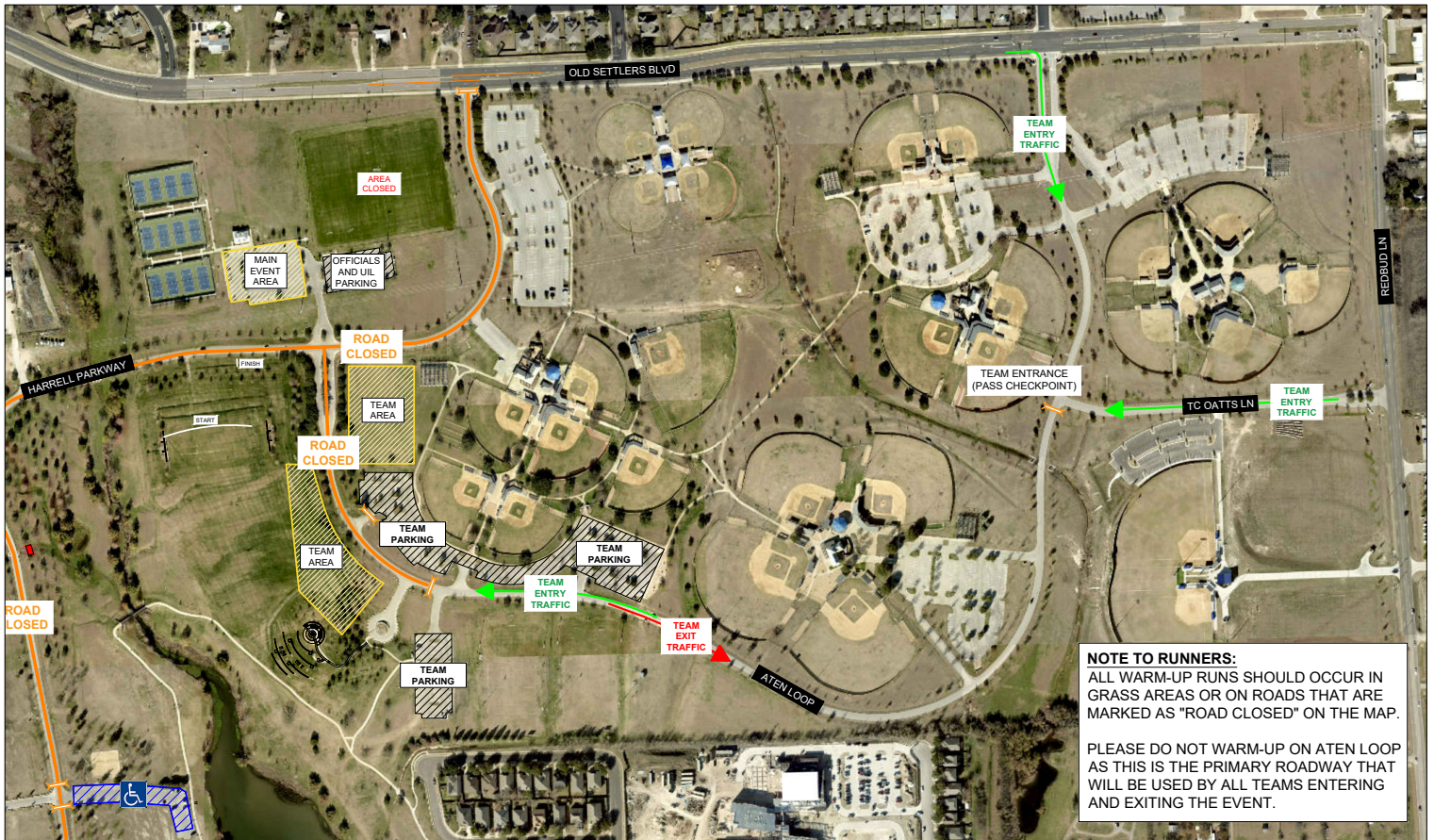


UIL STATE CROSS COUNTRY MEET - 2023
COURSE MAP

SCHOOL/TEAM PARKING

Gates will open at 7:15 am. One parking pass will be issued to each team in their school packet. Only coaches and teams will enter the park off of **Old Settler's Blvd & Aten Loop** or **Rosebud Ln & TC Oatts**. Parking passes will be required to enter this area on the day of the meet (see map for details). Tents will only be allowed in the designated **TEAM AREA** (see map). **NOTE:** School teams will only be allowed on the course for walk-throughs during the hours of packet pick-up. Please see packet pick-up information for details.

At the conclusion of competition, school vehicles **MUST** exit the same way they entered, off Aten Loop.



UIL STATE CROSS COUNTRY MEET - 2023

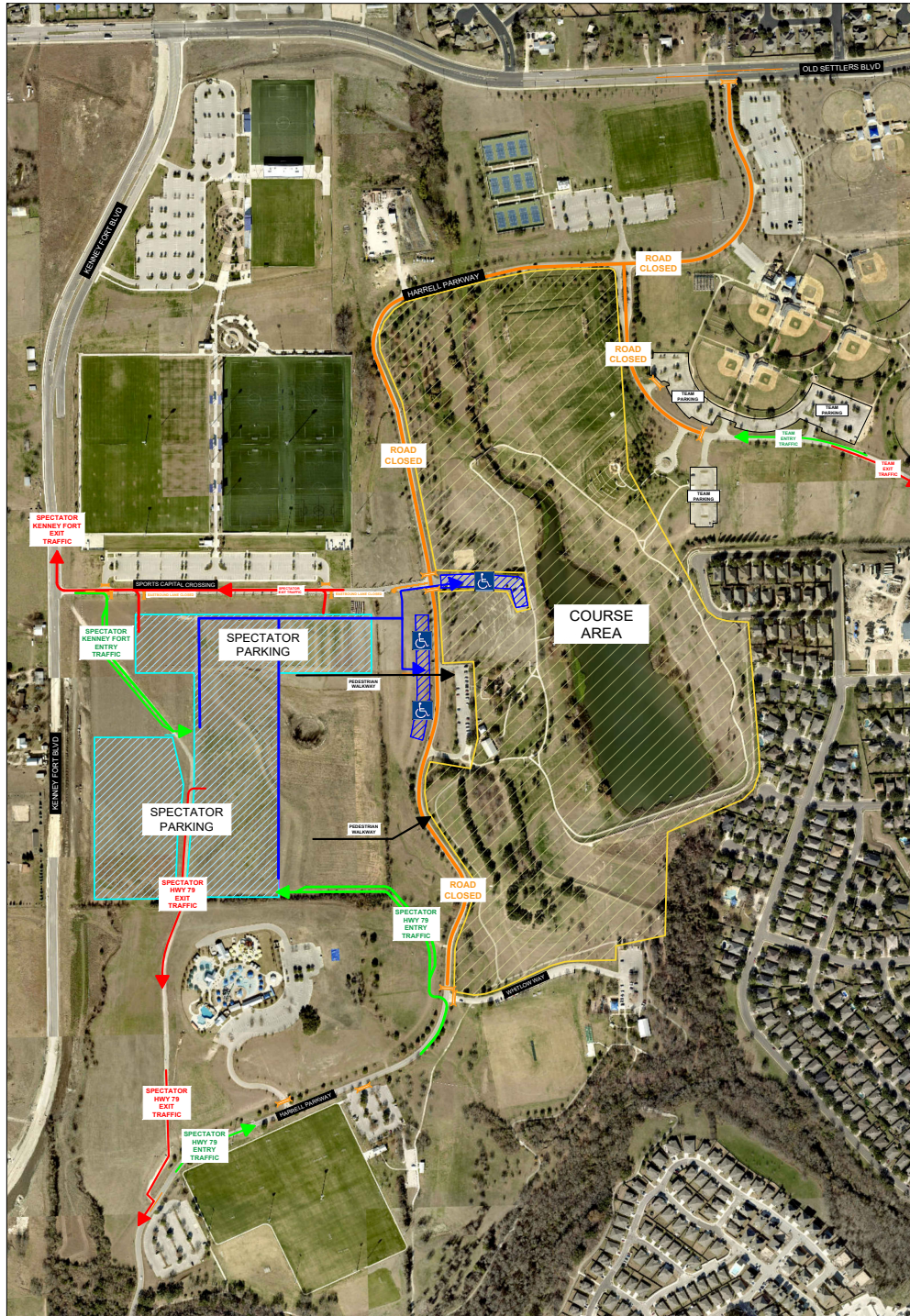
SPECTATOR PARKING

Lots will open at 7:30 am. Vehicles will either scan a prepaid parking ticket or purchase a parking ticket prior to entering lot.

- All transactions will be done by mobile devices. **NO CASH!**

Spectator Parking will have the choice of TWO entrance/exit points (north OR south). Spectators can enter the park beginning at 7:30am. There will be NO shuttle buses that will take spectators to the main event area.

- North – Off Old Settlers Blvd to Kenney Fort
- South – Off Hwy 79 to Harrell Pkwy



UIL STATE CROSS COUNTRY MEET - 2023

EVENT AREA MAP

