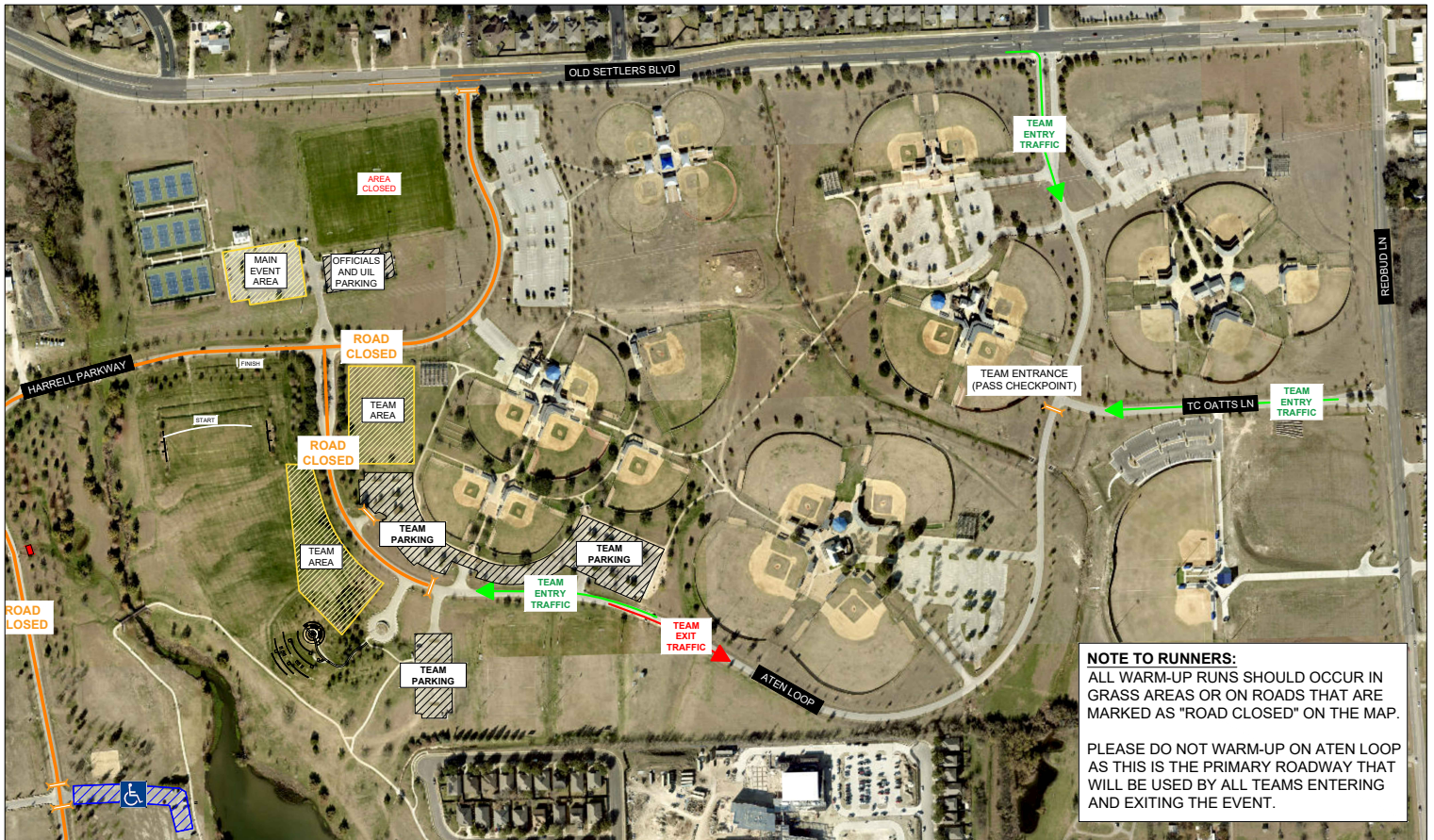


SCHOOL/TEAM PARKING

Gates will open at 7:15 am. One parking pass will be issued to each team in their school packet. Only coaches and teams will enter the park off of **Old Settler's Blvd & Aten Loop** or **Rosebud Ln & TC Oatts**. Parking passes will be required to enter this area on the day of the meet (see map for details). Tents will only be allowed in the designated **TEAM AREA** (see map). **NOTE:** School teams will only be allowed on the course for walk-throughs during the hours of packet pick-up. Please see packet pick-up information for details.

At the conclusion of competition, school vehicles **MUST** exit the same way they entered, off Aten Loop.



UIL STATE CROSS COUNTRY MEET - 2023