

# Xenetech CNC Engraving & Cutting Systems

## XOT 1313

### XOT 1313

Big-Time features in a smaller-format machine that's the story of this "Lucky 13". Pound for pound, it's the strongest engraver in our line, a winning combination of power, performance and cost effectiveness, routing and milling stainless steel and other difficult materials are often required.

Here are just a few of the standard features you can expect with every Xenetech Rotary Engraving System:

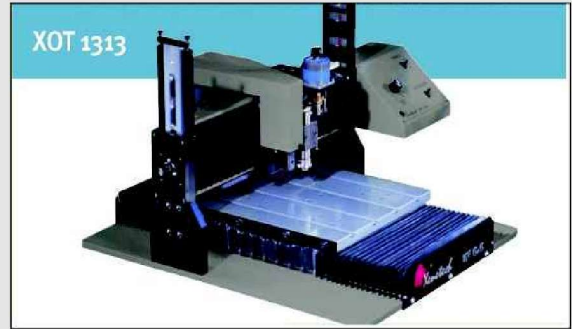
- Automatic surface sensing (*standard*)
- 11/64", 1/4", 4mm & 6mm top-load spindles available.
- Ability to engrave a wide variety of materials.
- High performance Viper electronics with touch screen key pad.
- State-of-the-art motion control system
- Networkable

#### Optional Items:

Collet Spindle Upgrade  
 Vacuum Chip Removal System  
 Diamond Drag Adaptor  
 Cylindrical Attachment  
 Speed Vise  
 XGW32 Drawing Tools  
 XGW32 All Fonts  
 XGW32 Spell Check

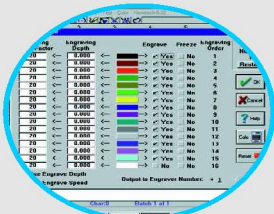
[Engraverschoice.com](http://Engraverschoice.com)

[Xenetech.com](http://Xenetech.com)



#### Specifications

Working Surface.....	13" x 13"
Engraving Area.....	182 sq. in
Footprint.....	22.5" x 27.5"
Shipping Weight.....	340 lbs.
Gantry Clearance.....	7.188"
Table Surface.....	"T-Slot"
Configuration.....	Moving Gantry
Z-Axis Travel.....	2.0"
Motion System.....	Stepper Motors
X & Y Rails.....	Round rails
X & Y Screws.....	Lead Screws
X & Y Resolution.....	.000161"
Max Engraving Speed.....	10 ips
Spindle Drive Motor.....	1/4 hp
Spindle RPM.....	21,000 rpm
Connectivity.....	Ethernet
Electrical.....	220V



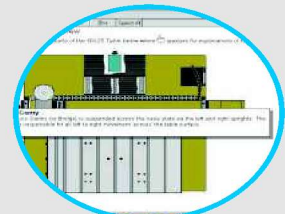
Engrave By Colour



Ring Engraving Attachment



Die's & Notary Seals



On line Help Files

#### Touch Screen Control Panel

Fingertip controls feature Pause/Cancel, Table Up/Down, Speed Control, Power Control, Auto Focus, Job Preview x/Zoom, Multiple Home Position Setting, Real Time Job Timer, Job Que, End of Job Signal, Direct Import HPGL Control, Air Assist Control, Exhaust Blower Control, Select Imperial or Metric Settings, Mottle Setting for Laser Pulse Control while Rastering & Diagnostics for Feed-back on Functionality of System Components.

#### Xenetech XGW-32 Graphic Workstation Engraving Software

32 bit Engraving Software, Colour Controlled Speed Settings, Colour Controlled Sequencing, Auto-Seal w/Reverse Image, Multiple Pass/Depth Capability, Multiple/Auto plate Layout, Import from DXF, AI, PLT, WMF, DC2, EPS, HPGL, TXT, BMP, & Many Other Formats, Copy & Paste from Popular Software Programs, Use Xenetech Engraving Fonts or True Type Fonts, EZ Dial Generator, Auto Serialization, Auto Braille Translation, Font Making, Job Pricing, Runs Multiple material Thickness in a single Job, Manual & Auto Kerning.

**THE MOST EXTENSIVE LINE OF U.S. MANUFACTURED EQUIPMENT IN THE ENGRAVING INDUSTRY.**

ENGRAVER'S CHOICE. PH.(949)916 5022 FAX.(949)916 5023  
 WWW.ENGRAVERSCHOICE.COM \* E-MAIL.SALES@ENGRAVERSCHOICE.COM  
 27572 GENIL, MISSION VIEJO, CA. 92691