

EngraveLab|v9

The world's most widely used engraving design and production software.



Save time, reduce costs and eliminate the complexity of learning difficult software by selecting one of 5 custom designed packages to suit your workflow needs.



With modified Features especially designed and requested by Laser owners of all types

Complete Laser and
Rotary Engraving
Software



BOSSLASER™

EngraveLab|v9

LASER ENGRAVING SOFTWARE

PhotoLaser Plus



The easiest to use photo-conversion software for laser engraving.

The perfect companion product for CorelDraw™. Process photographic images in PhotoLaser Plus and ensure the highest quality laser engraving output. Design artwork or bring your photographic images into CorelDRAW™ then seamlessly transfer your job to PhotoLaser Plus. Use the PhotoLaser feature to output photos to your laser engraver. Easily touch-up and crop your photos with PhotoLaser Plus bitmap editing tools. Convert color, grayscale or monochrome photos into vector files in one step.

PhotoLaser Plus supports both raster engraving and vector cutting. Automatically auto condense text to fit on a nameplate. Laser's badging routine reduces layout time and improves production time by automatically substituting text from a variable list. PhotoLaser Plus and Laser packages can be combined into one product to meet all your laser engraving needs.

EngraveLab Laser



Complete design, layout and production features make this the "must have" laser engraving software package.

"Laser" is the stand alone Windows-based laser engraving solution for producing trophies and awards, signage, parts marking, and 3D engraving. Automatically auto condense text to fit on a nameplate. Laser's badging routine reduces layout time and improves production time by automatically substituting text from a variable list. The badges feature also supports the automatic generation of barcodes. For short run jobs, use the nameplate creation tool to quickly position multiple sized nameplates on the same sheet easily. Efficiently mark parts with text using a wide assortment of single line engraving fonts. Laser supports both raster engraving and vector cutting. Laser and PhotoLaser Plus packages can be combined into one product to meet all your laser engraving needs.

COMBINED LASER AND ROTARY ENGRAVING SOFTWARE

EngraveLab Pro



The best of both worlds. Versatility in a single package for both rotary and laser engravers.

Run your entire engraving shop from the ultimate production engraving solution. Quickly add another dimension for text, logos, and artwork with 3D chisel tool paths. The 3D chisel tool path creates carved-looking trophies, awards and signs. Also included is True Shape Nesting that will minimize material usage for cutting out parts. By increasing your design capabilities and saving production time, the net result will be maximized profits. The Pro package is a single software solution for rotary and laser engravers, vinyl cutters and CNC machines.

ROTARY ENGRAVING SOFTWARE

EngraveLab Foundation



The entry level, industry standard for rotary engraving.

Provides you with a solid beginning to computerized engraving with tools for all your basic engraving needs. Begin with industry-leading import filters plus a seamless CorelDraw™ interface. Extensive file format support includes DXF, EPS, AI and PDF. Enhance your basic text with imported graphics, and improve your engraving efficiency with single-line engraving fonts. Output to a variety of Rotary Engravers, Vinyl Cutters, and CNC Machines.

EngraveLab Expert



A complete text layout and ADA solution for rotary engraving.

Includes all the Foundation tools plus advanced features to make the complete text composition, design, layout and production package for experienced engravers. Increase your design potential with easy node editing of scanned customer artwork. Type text with on-screen display of the text properties and easily fit text on a complex path or arc. Use automated engraving fill routines to increase the impact of text, logos and artwork. Let EngraveLab Expert do the work with enhanced spell check support.



Badge Design

ADA Signage

The badging routine reduces layout time and improves production by automatically substituting text from a variable list. EngraveLab Expert is your ADA solution. Generate Grade 2 Braille with appropriate spacing to meet ADA specification. EngraveLab Expert is fully compatible with the Raster™ Method of Braille, where precise placement of Rasters™ is done with a single point drill function. As with regular text, Braille can be badged and serialized.

Add our very popular FluidMask™ Module to your package!



Also offered as a FREE bonus with EngraveLab Laser or Pro packages (limited time offer, contact us for details).

FluidMask™ is an industry leading masking software that eliminates background images in an easy to use “paint by numbers” interface. We have customized it so that it integrates directly into EngraveLab. Perfect for removing backgrounds from photographs.



Complete Laser and Rotary Engraving Features

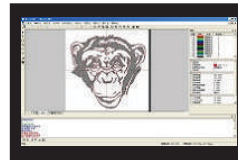
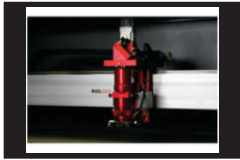


General Features

	Foundation	Expert	Photo Laser Plus	Laser	Pro
Windows XP™, Vista™ and 7™	•	•	•	•	•
Drag & Drop, Cut, Copy, Paste	•	•	•	•	•
File Preview	•	•	•	•	•
Scaling, Sizing, Fitting, Alignment	•	•	•	•	•
Unlimited Undo/Redo	•	•	•	•	•
Online Help	•	•	•	•	•
Grids & Guides (Vertical, Horizontal, Angled Lock Guides)	•	•	•	•	•
Color & B/W Printing	•	•	•	•	•
Arrays	•	•	•	•	•
Dimensioning/Measuring Tool	•	•	•	•	•
Job Cost Notes	•	•	•	•	•
Seamless CorelDRAW™ Interface	•	•	•	•	•
Re-Engrave	•	•	•	•	•
Engrave Text and Graphics	•	•	•	•	•
Hairline Support	•	•	•	•	•
Engraving Preview	•	•	•	•	•
Instant Replay	•	•	•	•	•
Import/Export PDF	•	•	•	•	•
Multiple Instance	•	•	•	•	•
On Screen Auto Layout	•	•	•	•	•
OLE Support	•	•	•	•	•
Import Meistergram™ LAY-LGO Files	•	•	•	•	•

Production Tools

	Foundation	Expert	Photo Laser Plus	Laser	Pro
Auto Re-size Job By Changing Plate	•	•	•	•	•
+100 Engraver/Router drivers	•	•	•	•	•
Vinyl Cutter Driver Support	•	•	•	•	•
Super Size Image	•	•	•	•	•
Use Objects as Guidelines	•	•	•	•	•
Welds of Same Color Objects/Multi Color Welds	•	•	•	•	•
Vectorization Wizard	•	•	•	•	•
Rubber Stamp	•	•	•	•	•
Block Nesting	•	•	•	•	•
Create Plate Function	•	•	•	•	•
Auto Fill Sheet & Nest	•	•	•	•	•
Send Proofs Via E-mail	•	•	•	•	•
Grade 1 Braille Foreign Language Support	•	•	•	•	•
True Shape Nesting	•	•	•	•	•
New - Create Realistic Engraving Blanks	•	•	•	•	•



Text Tools

	Foundation	Expert	Photo Laser Plus	Laser	Pro
Search and Replace	•	•	•	•	•
Extended Character Picker	•	•	•	•	•
True Type Font Support	•	•	•	•	•
WYSIWYE Text Compose	•	•	•	•	•
AutoCad SHX Font Support		•	•	•	•
Badges (Auto Text Replacement & Serialization)		•	•	•	•
New - Easily Add More Plates To a Badged Job		•		•	•
Columnizing	•	•		•	•
1100 Fonts & 5000+ Clip-art	•	•		•	•
Engraving Fonts (+100)	•	•		•	•
Text Underline	•	•		•	•
New - Underline Individual Words		•		•	•
Support Meistergram™ FON Fonts	•	•		•	•
Ability to Create Custom Engraving Fonts		•		•	•
Equal/Weighted Spacing for Text Compose		•		•	•
Fit Text to Arc		•		•	•
Fit Text to Path		•		•	•
Full Case Control		•		•	•
Enhanced Spell Checker		•		•	•
Adjust Letter Spacing by Cutter Diameter		•		•	•
Grade 1 & 2 Braille Translator		•			•
New - Setup Default Text		•		•	•
New - In Place Text Justification		•		•	•
New - Assign Color To Text		•		•	•
New - Text Undo / Redo		•		•	•
New - Custom Word Spacing Control		•		•	•
New - Set Line Positions Based On X/Y Co-Ordinates		•		•	•
New - Control Word Spacing		•		•	•
New - Custom Character Width Controls		•		•	•
New - Under Line Spaces Option		•		•	•
New - Menu Board Option		•		•	•
New - Convert True Type / Adobe Type1 To Single Line Fonts		•		•	•
New - Easily Edit And Save Single Line Fonts		•		•	•



Graphic Tools

	Foundation	Expert	Photo Laser Plus	Laser	Pro
Import Stroke Width (CMX, CMF, AI, EPS)	•	•	•	•	•
65+ Import/Export Filters (Including AI, EPS, DXF)	•	•	•	•	•
Create and Edit Shapes and Graphics	•	•	•	•	•
Color and B/W Scanning	•	•	•	•	•
Node Editing for Vectorized Graphics	•	•	•	•	•
Parametric Circle, Rectangle, Polygon, Star, Fan & Arrow	•	•	•	•	•
New - Spiral Tool		•		•	•
New - Free Edit Draw With Thick Line		•		•	•
Ginsu Knife	•	•		•	•
Fit to Circle/Square/Ellipse		•	•	•	•
Auto Tracing B/W Vectorization		•	•	•	•
New - Improved Auto Tracing Centerline Vectorization			•	•	•
Distortions and Special Effects		•		•	•
Metamorphosis		•		•	•
Auto Tracing Color Vectorization			•	•	•
Gradient Fills			•	•	•
Pattern Fills			•	•	•
Create Rulers / Dials				•	•
Bar Code Support				•	•
New - Bitmap Transparency Support				•	•
New - Lasso Selection Tool		•		•	•

Laser Engraving Tools

	Foundation	Expert	Photo Laser Plus	Laser	Pro
New - Auto Convert to Vector Cut	•	•	•	•	•
New - Control Default Fill / Hair Line Color	•	•	•	•	•
Custom Laser Engraving Palettes	•	•	•	•	•
Raster/Vector Engraving Support	•	•	•	•	•
Tool Library		•		•	•
Male / Female Tool Path Support		•		•	•
Lead In Function		•		•	•
Contour Cut			•	•	•
Print-Sort/Sequence Laser Engraving Jobs			•	•	•
PhotoLaser			•	•	•
Photolaser Glass, Granite, Lasertile Support			•	•	•
Render Grayscale Artwork for 3D				•	•
New-Bitmap Effects Including KnockOut, Wood Effect, Sketch				•	•



Rotary Engraving Tools

	Foundation	Expert	Photo Laser Plus	Laser	Pro
Rotary Engraving Friendly Copies	•	•			•
Inverse Fill of All Objects	•	•			•
Sort Routines to Optimize Engraving Speed	•	•			•
Sort/Sequence Rotary Engraving Job By Color	•	•			•
S-Sweep and Line Sweep Fills	•	•			•
Tool Path Preview and Editing	•	•			•
Tool Library		•		•	•
Lead in Function Including New Ramp, Online		•			•
Male / Female Tool Path Support		•		•	•
Advanced Spiral Fill		•			•
Sweep Tool Down Engraving Fill		•			•
Contour Drilling		•			•
Drill Center		•			•
Material Library		•			•
Improved Nearest Sort		•			•
3D Viewer		•			•
Multiple Fills in One Job		•			•
Spiral & Reverse Spiral Fills		•			•
Island & Reverse Island Fills		•			•
High Efficiency Fill Routines		•			•
Nose Cone Friendly Fills		•			•
Depth Control		•			•
Clean Up Pass/Multipass Depth Control		•			•
Tool Tracking		•			•
Suggested Tool Size for Rotary Engraving		•			•
Set Depth by Color for Rotary Engraving		•			•
2 Tool Rotary Engraving Fill		•			•
Spool Rotary Engraving Jobs		•			•
Rotary Engrave to Unlimited Table Size		•			•
Rotary Photo Engraving					•
2.5D Tool Path Support					•
New - Save Tool / Toolpath Information With Every Job		•		•	•
New Long Plate Feature		•			•



•
Male/Female
Toolpaths



Expand... your support network.



ValuePlus Means CADlink Software Customers Get More!

For over 20 years CADlink has provided our software customers with leading edge technology and tools that soon become industry standards. Combine this with our customer support and training program and there is simply not a better choice you can make than to use our software.

So much more than great software. Buy EngraveLab and get....



Free getting started session.
customers qualify for a free one-hour "startup session" with one of our friendly CADlink technical support team members. At your convenience schedule an actual "electronic hand-held" training session on any CADlink software topic you choose. Our support team can actually access your computer workstation remotely to walk you through any questions you may have.



Access to free online video's.
Access to free online video's. Search, quick to view, learn all about all of the tools in our software.



Instant access to the CADlink worldwide user community 24/7.
Instant access to the CADlink worldwide user community 24/7. forum located within InfoSource and share information with our worldwide software user community. Learn all of the tips and tricks from people who, like you, use our software daily.



Benefits of ValuePlus | Why ValuePlus should make your software decision even easier.

1. Maximize the value of your software investment. You've paid for the software, why not use every tool within it?
2. Software "tips and tricks" make you more efficient. Learn not only how to use the tools but how to use them easily and quickly.
3. Let CADlink train your staff. Tired of training new staff? Let CADlink help, simply point them in our direction.
4. Ever get the feeling that the software company you deal with is ignoring you? No CADlink competitors offer this type of premium customer service.

COMPATIBLE WITH:



SYSTEM REQUIREMENTS:

	MINIMUM	RECOMMENDED
CPU	Single Core 2 GHz	Dual Core 2.0 GHz (or faster)
Hard Drive	5 GB	40 GB
RAM	1 GB	2 GB
Display	1024 x 768 x 16 bit	1024 x 768 x 32 bit



BOSSLASER™