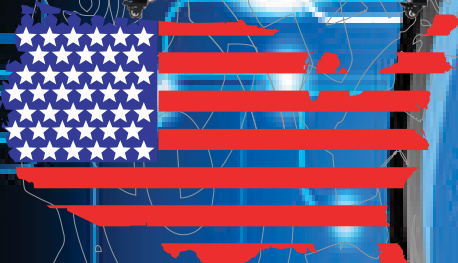




omtech

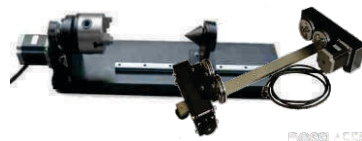
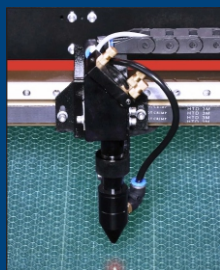


OMTECH Laser Systems

The product line represents the pursuit of perfection in Laser engraving and cutting!



25+ years in the Business



omtech

Marking Equipment
Priced to Move!

Included:

1. Water Chiller
2. Air Exhaust
3. Air Pump
4. Full Support for Corel/EngraveLab



Support, Training, Applications In The U.S.

949-355-4000

PROFESSIONAL MARKING & ENGRAVING SYSTEMS

Global Support – With Support Centers in U.S.

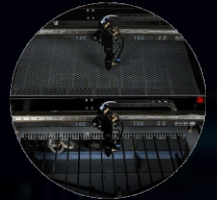
Onsite, PC-2-PC & Video Courses and Instruction



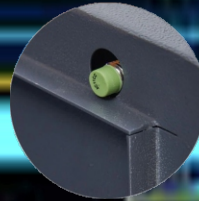
REAL-TIME WORKING
POWER DISPLAY



TRANSPARENT
VIEWING WINDOW



DUAL WORKING
PLATFORM



AUTOMATIC
SHUT-DOWN SENSOR

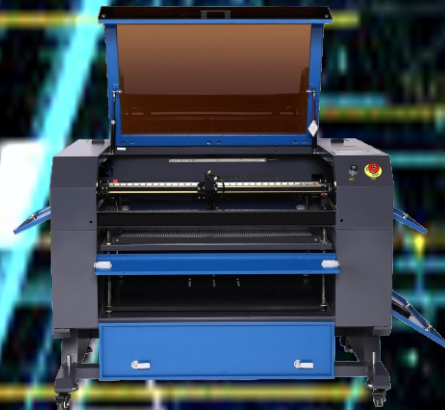


60W LASER TUBE

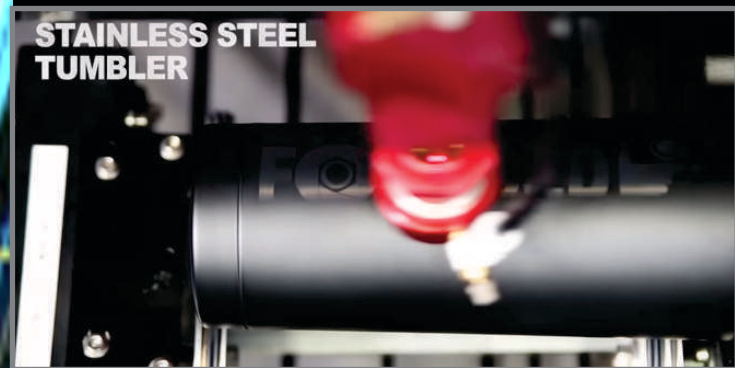


FRONT-REAR
PASS-THROUGH

949.355.4002



FULL WEST COAST PARTS SUPPLY



omtech

sales@engraverschoice.com

**From Fiber Marker & Cutters
to CO2 Laser Systems**

