

Transducers

C5-2Q



2 - 5 MHz
Curved Array

MC8-4Q



4 - 8 MHz
Micro - Convex Array

MC9-3TQ



3 - 9 MHz
Micro - convex Array

C6-2MQ



2 - 6 MHz
3D/4D Mechanical
Curved Array

L12-5Q



5 - 12 MHz
Linear Array

L17-7HQ



7 - 17 MHz
High Frequency
Linear Array

P5-1Q



1 - 5 MHz
Phased Array

P7-3Q



3 - 7 MHz
Pediatric Phased Array

Flexible and Available at Fingertips

Acclarix™ LX3 VET
Diagnostic Ultrasound System



Global Headquarters:

Edan Instruments, Inc. | 15 Jinhui Road, Pingshan District, Shenzhen
518122 P.R. China | +86.755.26898326 | www.edan.com | info@edan.com

U.S. and Canada inquiries:

EDAN Diagnostics, Inc. | 9918 Via Pasar, San Diego, CA 92126
+1.858.750.3066 | www.edandiagnostics.com | edan-info@edandiagnostics.com

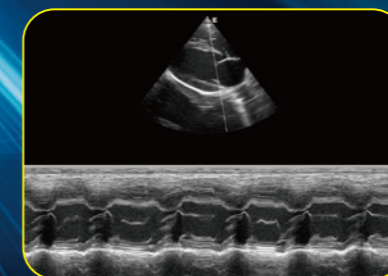
© Edan Instruments, Inc. All rights reserved. Features and specifications are subject to change without prior notice. No reproduction, copy or transmission may be made without written permission. Not all products or features are available in all countries, contact Edan for local availability.



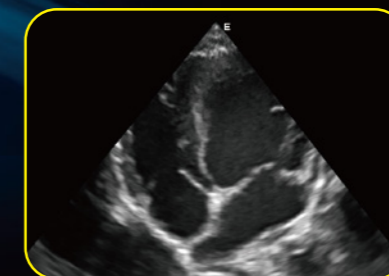
Stunning Clarity

Compacted with innovative Edan TAI technology and multiple imaging processing technologies, Acclarix LX3 VET could perfectly display ultrasound image in different modes, assisting sonographer to make more precise diagnosis.

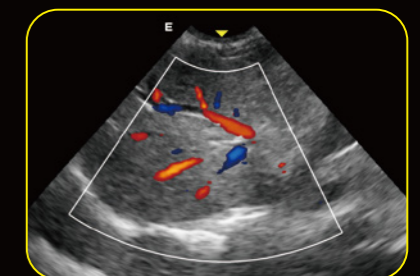
- High fidelity, high-channel count architecture results in superb detail resolution, particularly at depth
- Tissue Adaptive Imaging (TAI) continuously and automatically optimizes imaging allowing more focus on the patient
 - In B-mode, TAI fine tunes multiple parameters to provide the best possible image quality
 - In Doppler, TAI automatically adjusts for flow state, providing improved continuity, border detection and filling of color



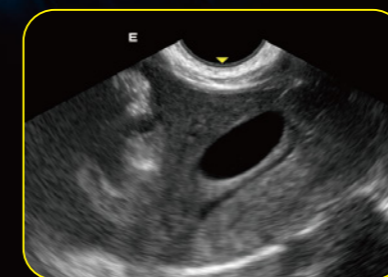
Canine Heart (M mode)



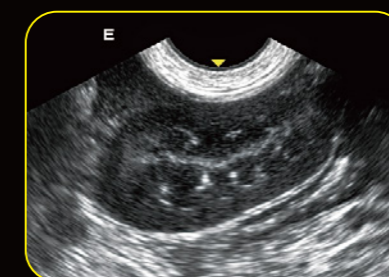
Canine Heart (B mode)



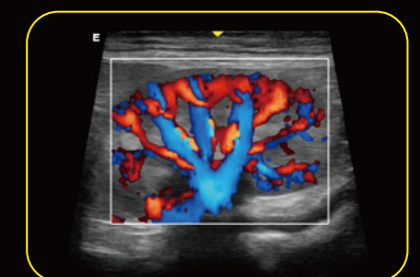
Liver (C mode)



Gall bladder (B mode)



kidney (B mode)



Kidney (C mode)

New Generation of Capability and Flexibility

Integrated with compact appearance, cutting-edge technology and intelligent workflow, Acclarix LX3 VET is to provide more valuable innovation. Its excellent image performance plays an important role in the prevention and early detection in primary medical care, enriching the diagnostic application and enhancing the clinical value.

The Virtue of Value

The Acclarix LX3 VET delivers unmatched value and performance across a broad range of applications:

- Canine
- Feline
- Bovine
- Ovine
- Equine
- Reproduction
- Cardiac
- Abdomen
- Superficial

Distinctive Design



Considerate gel warmer design for better experience



Customizable touch screen user panel to simplify diagnosis



5 active transducer ports to maximize clinical application



Keyboard with dedicated swivel for easy folding