



A BETTER FUTURE FOR VETS, ONE DEVICE AT A TIME!



Watch this brochure
and save it on your
phone

FutureVets

Catalogue



Our Official Website

INTRODUCTION

ABOUT FUTUREVETS

Future Vets, is your one-stop-shop for all your veterinary clinic needs in Saudi Arabia. Our company was established in 2020 with the mission to provide high-quality and affordable products to help veterinarians and animal healthcare professionals provide the best possible care for their patients. We specialize in selling a wide range of products, including ultrasounds, X-rays, cages, analyzers, tables, anesthesia, and much more. Our products are sourced from reputable manufacturers and are carefully selected to meet the needs of veterinarians and animal healthcare professionals. At Future Vets Company, we are committed to providing exceptional customer service and support, and we are always available to answer any questions or concerns you may have. We take pride in being a trusted and reliable supplier for the veterinary community in Saudi Arabia and look forward to serving you with all your clinic needs.

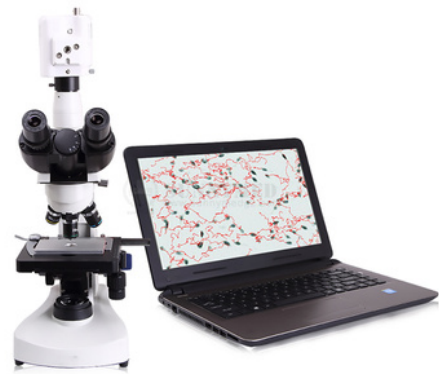
Partenrs and Vendors



Veterinary Sperm Quality Analyzer

YSTE-SA68P

MoMain unit with 19" LCD display, x 1set JVC camera(from Japan), x 1set: Binocular Microscope, x 1set Microscope analysis software, x 1pc Counting plate, x1pc Sperm thermostat, x 1set



Binocular Microscope

YSXWJ80CX

With 7" LCD screen

High Speed Centrifuge

YSCF-TG16

Max. Capacity 8×7ml
Max. Speed (r/min) 16500



Roller Mixer

YSTE-MR4

Rotation Speed: 6-32 rpm Tube Qty: 1-24 pcs
Tube diameter: $\varnothing 8$ - $\varnothing 15 \pm 0.1$ mm Plate Diameter:
 $\varnothing 300$ mm Angle of Inclination: 38°
Voltage: AC 220V $\pm 10\%$ (50/60Hz)
Power Rating: 10W



V-Top Electric Surgical Table

YSVET0504

Table height: 760—1060mm
Table dimension: 1400*650mm
Table gradient : $\pm 15^\circ$
Adjustable angle of table board: 0° - 45° 5The
Range of temperature: 0° — 50°
Power: 220V

Electric Operating Table

YSVET0506-1

High-quality 304 stainless steel, equipped with stainless steel movable mesh. Flat mesh and circular arc mesh are available. The inclined lifting bracket is used for stable lifting and firm locking. It is equipped with a touch-type lifting switch for easy operation. Size: length 1300 width 600 height 450-1000



Veterinary Anesthesia Machine with Ventilator

YSAV601V

High quality anesthesia machine with all basic accessories and ventilator



Oxygen Generator

YSOCS-5

High Quality Generator with a size of 5L/min

Vet Infusion Pump

YSSY-820V

Infusion rate: 1ml/h~1,200ml/h
Purge rate: 100ml/h~1,200ml/h (100 ml/h increment)



Veterinary Drill and Saw

YSDZ0502

One Main unit with four different applications:

1-One Oscillating Saw

2-One Bone Drill

3-One AO Drill

4-One K-wire Drill

One Charger, Two pieces of rechargeable battery

One aluminum box



Veterinary General Surgical Instrument Set

YSVET-W012

Set of General Veterinary Surgery Set with Sterilization Box



Veterinary Dental Surgical Instrument Set

YSVET-D015

Set of Dental Veterinary Surgery Set with Sterilization Box



Veterinary Orthopedic Instrument Set

YSVET-GK01

Set of Orthopedic Veterinary Surgery Set with Sterilization Box



Canine Ligation/Sterilization Instrument Set

YSVET-G014

Set of Canine Ligation/Sterilization Veterinary Surgery Set with Sterilization Box



Feline Ligation/Sterilization Instrument Set

YSVET-M014

Set of Feline Ligation/Sterilization Veterinary Surgery Set with Sterilization Box



Veterinary Electrocautery Machine

YSESU-X100V

Large LCD digital display, Small and light, cost-effective, able to perform most monopolar and bipolar surgeries, with 6 working modes of monopolar and bipolar, Two output control modes :foot & manual, Automatic boot detection and error prompt function, reads tissue composition to monitor and adjust to impedance as you want.



Portable Electric Suction Device

YS-23A1

Portable electrical sputum suction device can be used for suctioning sputum and other thick secretions in hospitals. The machine adopts oil-free lubricating pump, avoiding the pollution of oil mist. The pump requires no daily maintenance and servicing. The overflow protection device in the machine prevents liquids from flowing into the pump. The machine is characterized with small dimensions, light weight and high mobility.



Veterinary dental unit with air compressor

YSDEN-301V

Saliva Ejector 1pc,
High and Low speed Handpiece Tubing
3-Way Syringe
Clean Water Supply System , Drainage System
Foot Control , Air compressor, Handpiece set



Wall-Mounted Veterinary LED Operating Lamp

YSOT-L1

LED, Illumination Intensity (lx): 50000- 80000



High-End LED Operations Lamp

YSOT-LED5B

LED, Illumination Intensity (lx): 30000160000, adjustable



Mobile LED Operating Lamp

YSOT04LED-III

LED Illumination: $\geq 100,000\text{LX}$



Wall-Mounted Veterinary Diagnostic Set

YSVET-ZCA6

All in One Ophthalmoscope, Otoscope, ENT inspector thermometer NIBP



Pet Brooder / Incubator

YSVET-ICU600

Automatic Temp/Humidity control and setting
Recessed brooding tray for easy cleaning
5 stage dimmer device E210 for indoor illumination control
Rotary Door
PTC heated humidification system kills germ
Reduce of fan noise inside of brooders and provide better pleasant environment (69dB)
H211



Pet ICU Chamber

YSVET-ICU160P

Treatment time settings and alarm function
LED indoor lamp, IR lamp and UVC (preventing spread of viruses) The lamp also has a quick button on the home screen for easy control of the three kinds of lamp, fan and timer functions.



Portable Rebound Tonometer

YSYYJ800

Rebound tonometer is an electric measuring type pressure gauge which converts the pressure into the voltage or current signal through the physical characteristics of the metal.



Class B Bench-Top Autoclave Sterilizer

YSOT-LED5B

LEuropean B standard Opening water tank
Digital display 121°C/134°C with 23L mass size



Veterinary LED Woods Lamp

YSVET-WL365

Tube: Imported high-power LED Spectral region:
320nm--400nm Maximum peak: 365nm
Battery voltage: 3.7V



Customizable Cages

YSVET0510

Stainless steel, size: 2400*700*2140mm, including two big cages, three middle cages, five small cages and one oxygen cage



Pet Boarding Cages

YSVET1220B

Stainless Steel Cage
External size: 1220*700*1570mm (L*D*H)
1. Upper cage: 610*610*700mm (L*D*H)
2. Lower cage: 610*820*700mm (L*D*H)
3. Waste tray: 690*545*10mm (L*W*H)



Pet Cage with Spring Board

YSVET1000

With spring board
High quality 304 stainless steel Size:
1000*650*1765

1. External size: 1000*810*650mm
2. Upper cage: 1000*810*650mm
3. Lower cage: 1000*810*650mm
3. Springboard: 580*250*10mm
4. Left door: 670*750*8mm
5. Right door: 270*750*8mm



Veterinary Weighing Scale

YSVET-TZC150

Full 304 stainless steel with Loading capacity:
150KG



Pet Treadmill

YSVET-TM300F

Run With Size: 380*1500mm
Run Surface Thickness: 1.6mm
Run Board Thickness: 15mm
Allowable Weight: 100kg
Speed Range: 0.8-12km/h
Horsepower: 1.75HP



Pet Treadmill with Hydrotherapy

YSVET-TM380

Walking area: 470*1300MM
Running surface thickness: 1.6mm
Washing area: 1370*530mm
Max. loading capacity: 80kg
Speed: 0.8-12km/h
Temp. control: 0-55°
Housepower: 2HP Material: 304S/S



CONTACT US

Future Vets Head Office: 23334 Aziziyah Jeddah, Saudi Arabia

Phone: +966 (12) 657 6817

Mobile: +966 53 502 0079

Whatsapp: +966 53 502 0079

Email: Sales@future-vets.com



Partenrs and Vendors

