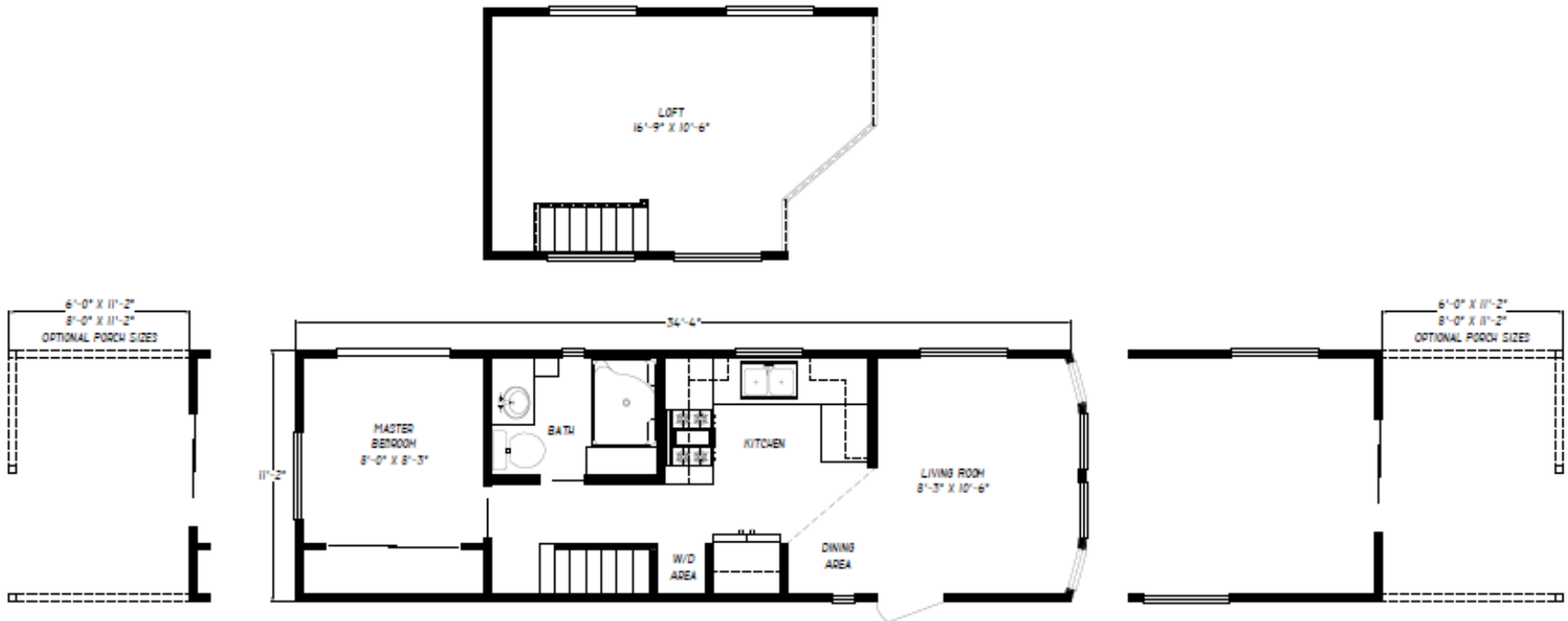


**Grand Teton Series**  
**MODEL M: GT 3512FLM (397 Sq.Ft.)**

Specifications Subject to Change Without Notice or Obligation  
3/30/2020



## **Grand Teton Series Standard Features**

Specifications Subject to Change Without Notice or Obligation

3/30/2020

### **EXTERIOR**

- 4" trim on all windows
- Allura Lap Siding per plan
- 12" front overhang
- 12" rear overhang
- 12" eaves on sides (not on 15' wide models)
- 90" – 2"x4" exterior walls
- R-24 floors, R-13 walls & R-25 roof

### **DOORS & WINDOWS**

- Half Light doors w/internal mini blinds
- Side light windows in standard door location
- Vinyl framed low "E" dual glaze windows
- Residential style mortise door hinges

### **STRUCTURAL**

- 1 Year "wall to wall" warranty
- 30 lb. Roof load
- 2" x 4" Exterior walls 16" o.c.
- 2"x 6" - 16" o.c. floor joist
- 3/4" OSB T&G floor decking
- Transverse floor system
- 9:12 Combination Roof pitch
- Class A fire rated fiberglass shingles
- Removable hitches

### **INTERIOR / FINISH WALLS**

- Factory select décor throughout
- High vault ceilings T/O
- Tape and texture walls w/square corners
- Upgrade Laminate flooring T/O
- Closet Organizer
- 2- panel white passage doors
- Clean able Sherwin Williams Paint

### **BEDROOM**

- Large Open Closet with multiple hanging rods
- Bi Pass closet doors
- TV/Phone Raceways installed
- Ceiling Fan (Loft over BR will get can light)

### **KITCHEN**

- 20 cu.ft. Black frost-free refrigerator
- 30" Whirlpool Black free-standing gas range, w/clock, window & timer
- Soft close cabinets
- Microwave Rangehood
- Deep Stainless-Steel kitchen sink
- Goose neck single lever faucet & sprayer
- Bank of drawers
- Granite/Quartz countertops w/4" backsplash

### **BATHROOM**

- 1 pc. fiberglass tub/shower per plan
- Granite/Quartz Countertop w/4" Backsplash
- Single lever tub/shower diverter
- Undermount Ceramic sink
- Exhaust fan
- 33" height lavy cabinet
- Elongated Quality Toilet
- Single Lever Faucet
- Towel bars and tissue holders (shipped Loose)

### **CABINETRY**

- Quality painted or hardwood cabinet doors
- Hardwood stiles for cabinetry
- Crown molding on kitchen cabinets
- Granite/Granite w/4" backsplash
- Soft Close Drawers and Doors throughout
- Microwave Cabinet above Range
- Adjustable shelves in base & O/H Cabinets
- H/D Metal ball bearing drawer guides

### **ELECTRIC & PLUMBING**

- 50 Amp service
- In-Floor PEX waterlines
- Water shut offs at toilet and kitchen sink
- Propane Tankless water heater
- Ductless Heat pumps, Heating & A/C
- Standard GFI
- Ceiling fan with light in M/Bed and L/R
- LED recessed lighting through-out
- Cast Aluminum Exterior Carriage light
- Fire extinguisher