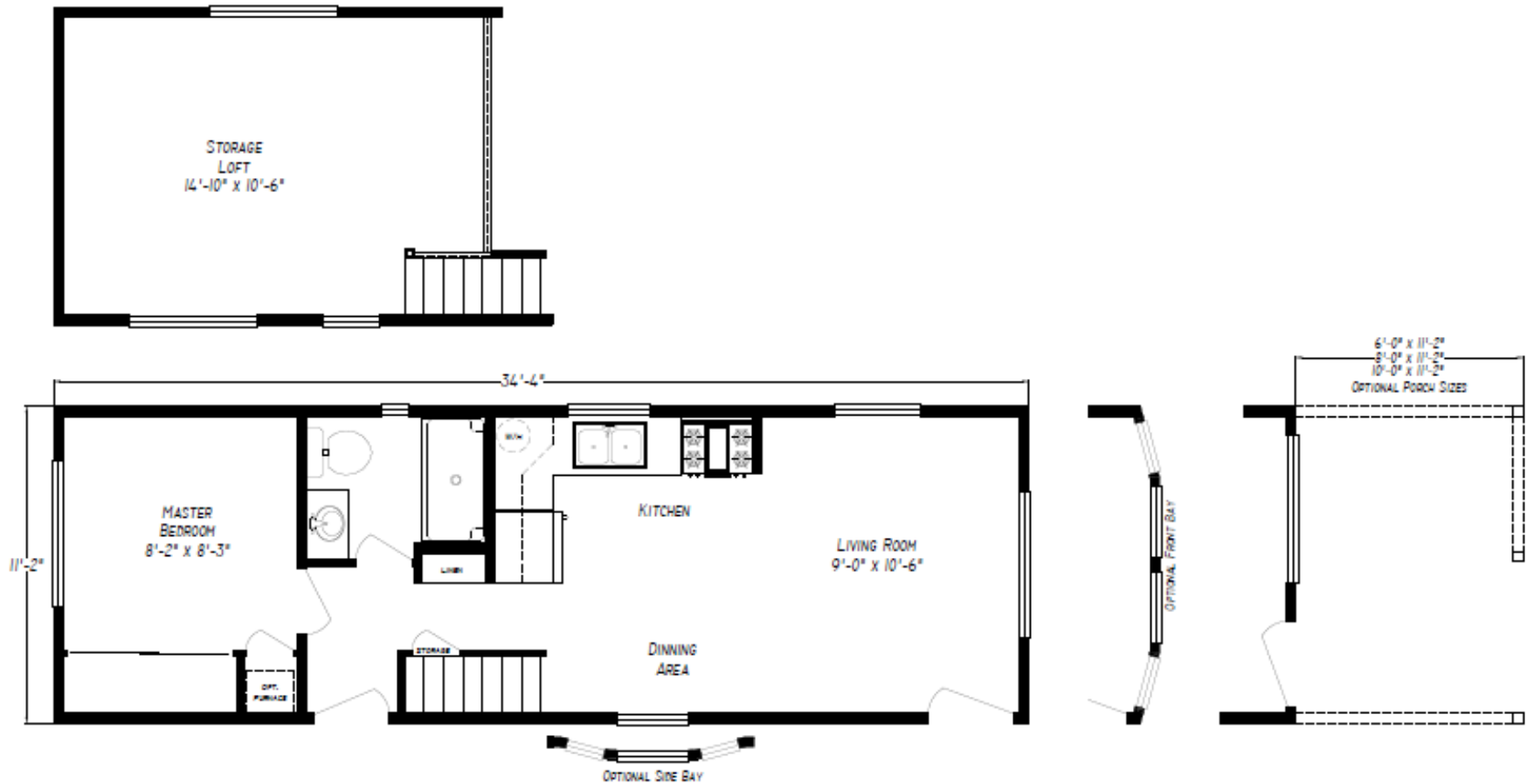


**Sierra Freedom Series**  
**MODEL V: SE 3412FLV (391 Sq. Ft.)**

Specifications Subject to Change Without Notice or Obligation  
3/30/2020



## **Sierra Freedom Series Standard Features**

Specifications Subject to Change Without Notice or Obligation

3/30/2020

### **EXTERIOR**

4" trim on all windows  
LP Siding w/wainscot per plan  
12" front overhang  
12" rear overhang  
12" eaves on sides  
90" – 2"x4" exterior walls  
R-11 floors, R-11 walls & R-19 roof

### **DOORS & WINDOWS**

Insulated Fiberglass Exterior doors  
Vinyl framed dual glaze windows  
Residential style mortise door hinges  
1" Mini blinds throughout  
T&T Wrapped Windows

### **STRUCTURAL**

30 lb. Roof load  
2" x 4" Exterior walls 16" o.c.  
2"x 6" - 16" o.c. floor joist  
3/4" OSB T&G floor decking  
Transverse floor system  
7:12 Roof pitch Non-Loft  
9/12 - 2/12 combo pitch on all Lofts  
Class A fire rated fiberglass shingles  
Removable hitches  
Insulation: R-19 roof, R-11 walls, R-11 floor  
Welded Steel Chassis with 8" "I" beams  
New tires and recycled brake axles

### **INTERIOR / FINISH WALLS**

Factory select décor throughout  
High vault ceilings T/O  
Tape and texture walls  
Upgrade Durable Flooring  
Closet Organizer with pullouts in closet  
2- panel white passage doors  
Cleanable Sherwin Williams Paint

### **BEDROOM**

Large Open Closet with multiple hanging rods  
Bi Pass closet doors  
TV/Phone outlets installed

### **KITCHEN**

16 cu. ft. Black frost-free refrigerator  
30" Whirlpool Black Gas Range  
Matching Black range hood  
Pre-wired for Microwave  
Deep Stainless-Steel kitchen sink  
Single lever faucet & sprayer  
Bank of drawers  
Laminate countertops w/4" backsplash

### **BATHROOM**

1 pc. fiberglass tub/shower per plan  
Laminate Countertop w/4" Backsplash  
Single lever tub/shower diverter  
Modern Oval Ceramic sink  
Exhaust fan  
36" height lavy cabinet  
Elongated Quality Toilet  
Metal Lavy Faucet

### **CABINETRY**

Quality painted or hardwood cabinet doors  
Hardwood stiles for cabinetry  
Crown molding on kitchen cabinets  
Soft Close Drawers and Doors throughout  
Microwave ready cabinet per plan  
Adjustable shelves in base & O/H Cabinets  
Base cabinets with fixed shelves  
H/D Metal ball bearing drawer guides

### **ELECTRIC & PLUMBING**

50 Amp service  
In-Floor PEX waterlines  
Water shut offs at toilet and kitchen sink  
20 gallon electric Water heater  
Two base board electric heaters  
Standard GFI  
LED recessed lighting through-out  
Cast Aluminum Porch light  
Fire extinguisher