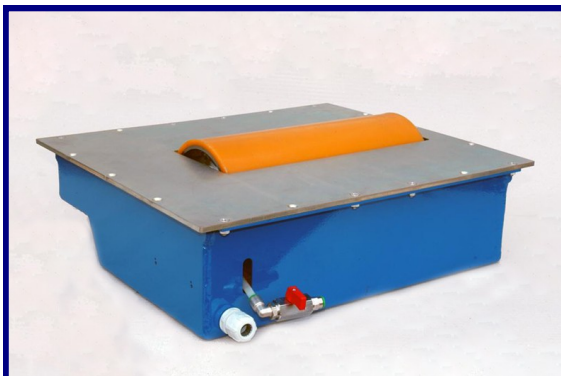
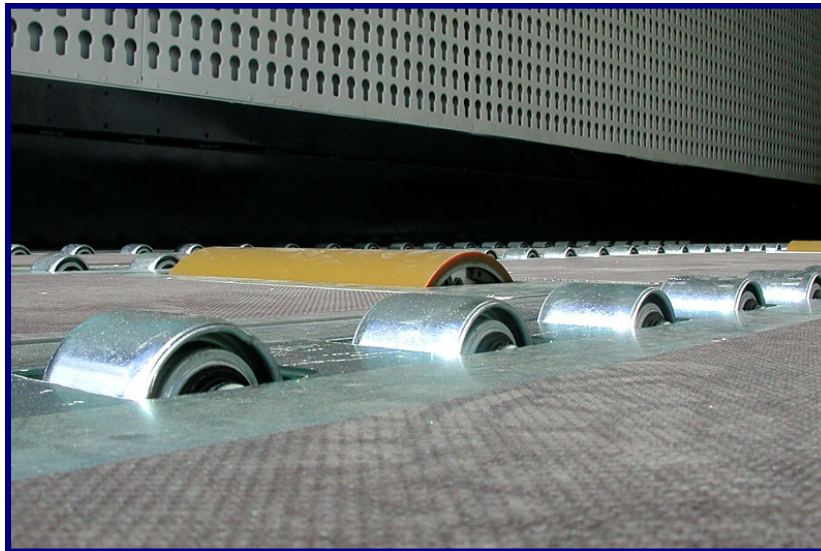




**"Rollerbed Systems' capabilities will meet or exceed your requirements."**

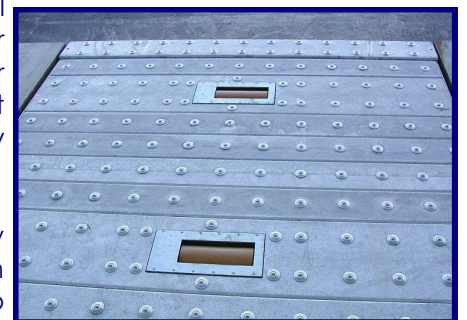
## Powered Cargo Roller



The Powered Cargo Roller is normally installed within a vehicle or warehouse in conjunction with Rollerbed Systems' pneumatic roller track to provide the safe and accurate positioning of a load or air freight pallet. The urethane covered roller when raised by onboard air pressure and powered by the vehicle 12 volt battery can exert a tangential force of over 570 lbs to move the load and at a system speed of up to 17.5 ft/min.

The roller unit is available in a low height version for fitting into the more confined chassis space above the fifth wheel coupling. A small hand held pendant control and wander lead are supplied as part of the system to control the load speed and direction of rotation. The controller permits greater personnel safety at a reasonable distance from the moving load. Other forms of system control can be provided including a fully independent wireless infra-red device or roller control can be integrated into factory logistic management systems PLC.

The Rollerbed System's Powered Cargo Roller can be used within a factory or warehouse in a static situation such as pallet make up or break down locations. Once assembled the loaded pallet can be safely moved to await powered loading into a suitably equipped vehicle.



**Western Region Sales Office**  
Bill Vigil  
Phone: 925-240-1776  
Fax: 925-240-1778  
bill.vigil@rollerbedsys.com

**Corporate Office & Manufacturing:**  
280 West Sixth Street,  
West Wyoming, PA 18644.  
Phone: 866-779-8302  
Fax: 610-779-8332  
sales@rollerbedsys.com

**Eastern Region Sales Office**  
Frank Willis  
Phone: 908-246-8935  
Fax: 610-965-1708  
frank.willis@rollerbedsys.com

**Visit our web site for further information**  
**[www.rollerbedsystems.com](http://www.rollerbedsystems.com)**