

METROPOLITAN BUILDERS ASSOCIATION PRESENTS THE 1991

FIVE DOLLARS

PARADE OF HOMES





Terra Development Corporation

is honored that Lake Forest
has been selected as the site
for the 1991 Parade of Homes.

We wish to express our sincere thanks
to Associated Commerce Bank,
the Muskego Planning Commission
and the Muskego Common Council
for their support in making
Lake Forest a reality.



TERRA DEVELOPMENT CORPORATION
Developer of Fine Residential Communities

771-6080

■
Lake Forest
Muskego, WI
Starting From \$29,900.

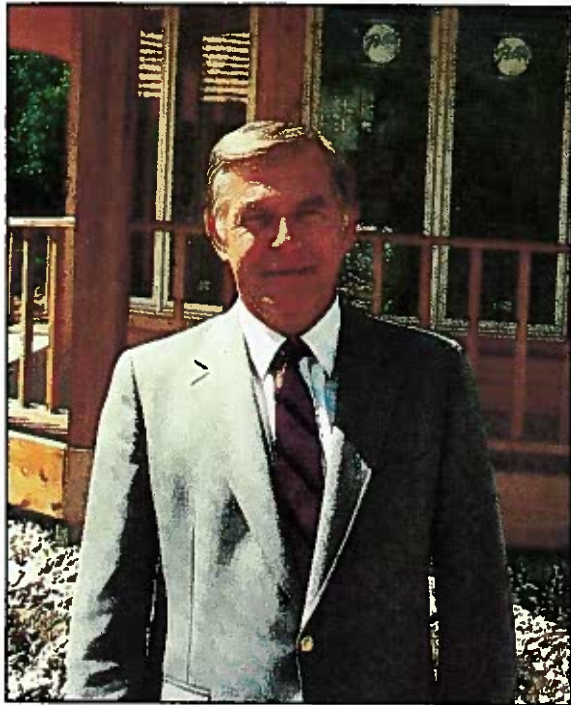
■
North of the Bark
Village of Merton, WI
Starting From \$17,900.

■
Chesterwood Parc
Brookfield, WI
Starting From \$59,900.

■
Riverwood Park
Pewaukee, WI
Starting From \$29,900.

■
Lake Park
Pewaukee, WI
Starting From \$26,900.

Welcome to The 1991 Metropolitan Builders Association Parade of Homes



Ralph Oleniczak
Stenson Builders, Inc.
1991 Parade of Homes Chairman

On behalf of the Metropolitan Builders Association, I would like to welcome you all to this year's Parade of Homes.

I believe it was Philip Moffet who once said, "A HOUSE IS A HOME WHEN IT SHELTERS THE BODY AND COMFORTS THE SOUL". Those words provided a special meaning to all of the builders in this year's Parade of Homes. During the past several months, twenty-five of the area's finest builders have joined together to bring you something truly exceptional.

As you view the thirty models in this year's Parade, I'm sure you will be struck by the outstanding design and quality which has gone into these homes. Each model represents an extraordinary showcase of innovative ideas in design and craftsmanship. All of the builders are proud of their homes and will be glad to show you the many distinctive features which have made these homes so truly exceptional.

As members of the Metropolitan Builders Association, the Parade of Homes participants are dedicated to upholding the high construction standards set by this great Association.

Thanks for coming and I hope you have an enjoyable Parade.

Yours very truly,

A handwritten signature in black ink, appearing to read "Ralph Oleniczak".

Ralph Oleniczak
Stenson Builders, Inc.



Copyrighted 1991 by Metropolitan Builders Association of Greater Milwaukee, Inc.
6511 W. Bluemound Rd., Milwaukee, WI 53213 Telephone (414) 258-9850

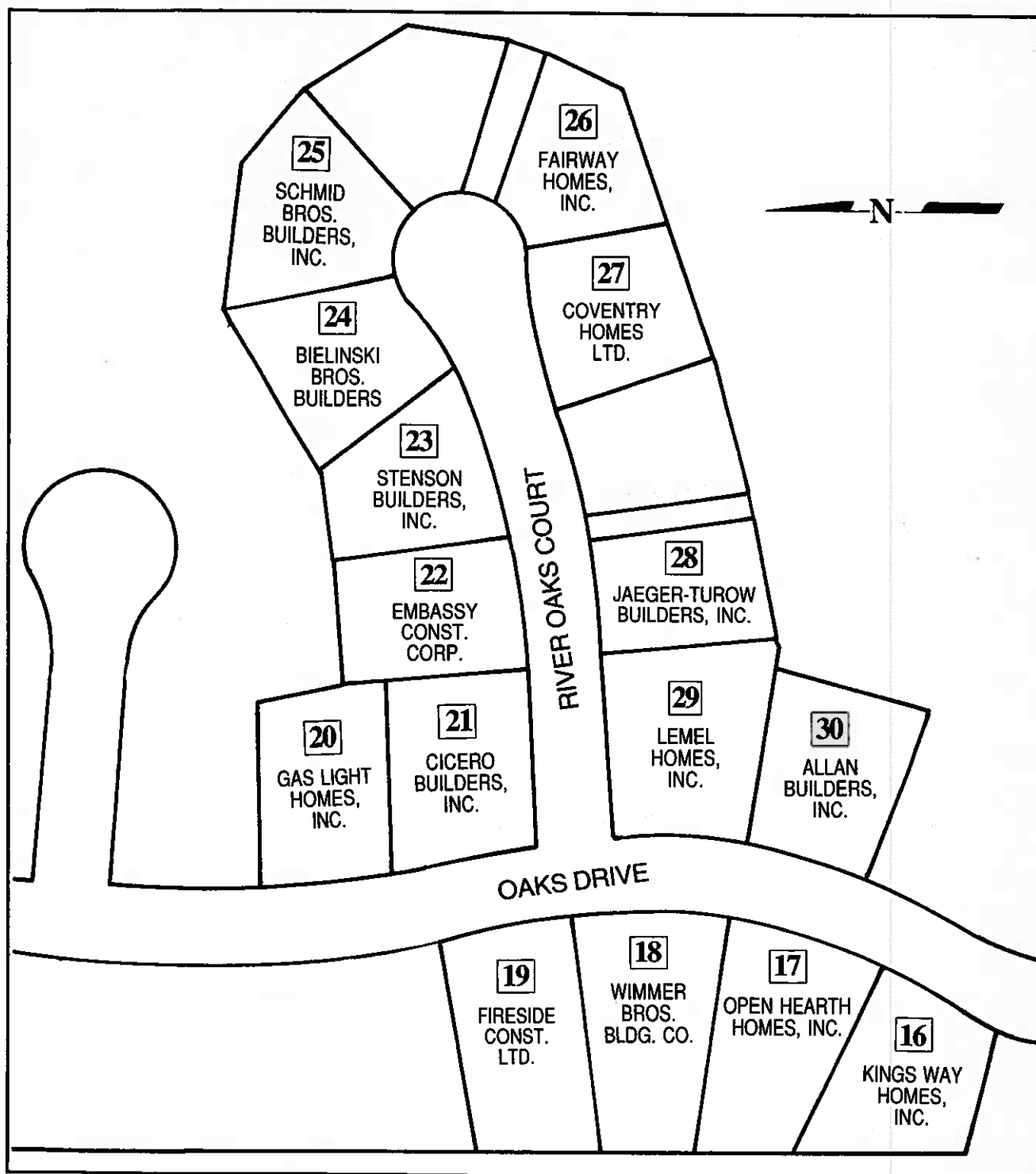


Table of Contents

WESTCHESTER LAKES Site Map	5
Opportunity Homes, Inc.	7
Regency Builders, Inc.	9
Lemel Homes, Inc.	13
Chapel Hill Homes, Inc.	15
Stonefield Homes Ltd.	17
Colby Const. Co., Inc.	21
Fireside Const. Ltd.	23
Evergreen Homes	27
Kings Way Homes, Inc.	31
 ABERDEEN Site Map	 33
Embassy Construction Corp.	37
Demlang Builders, Inc.	43
Satula Builders, Inc.	47
Meridian Homes, Inc.	55
Gardner Bros. Construction	61
Wolter Bros. Builders, Inc.	65
 LAKE FOREST Site Map	 81
Kings Way Homes, Inc.	83
Open Hearth Homes, Inc.	87
Wimmer Bros. Bldg. Co.	89
Fireside Const. Ltd.	93
Gas Light Homes, Inc.	95
Cicero Builders, Inc.	99
Embassy Const. Corp.	101
Stenson Builders, Inc.	103
Bielinski Bros. Builders	105
Schmid Bros. Builders, Inc.	109
Fairway Homes, Inc.	111
Coventry Homes Ltd.	113
Jaeger-Turow Builders, Inc.	115
Lemel Homes, Inc.	117
Allan Builders, Inc.	119
 ARTICLES	
Habitat for Humanity	41
1992 Home Builders Expo	45
MBA — We're More Than You Can Imagine	59
Andy Cicero - President - MBA	59
HOW — Your Built-In Protection	71
How To Choose A Professional	75
Selecting Your Lot	97

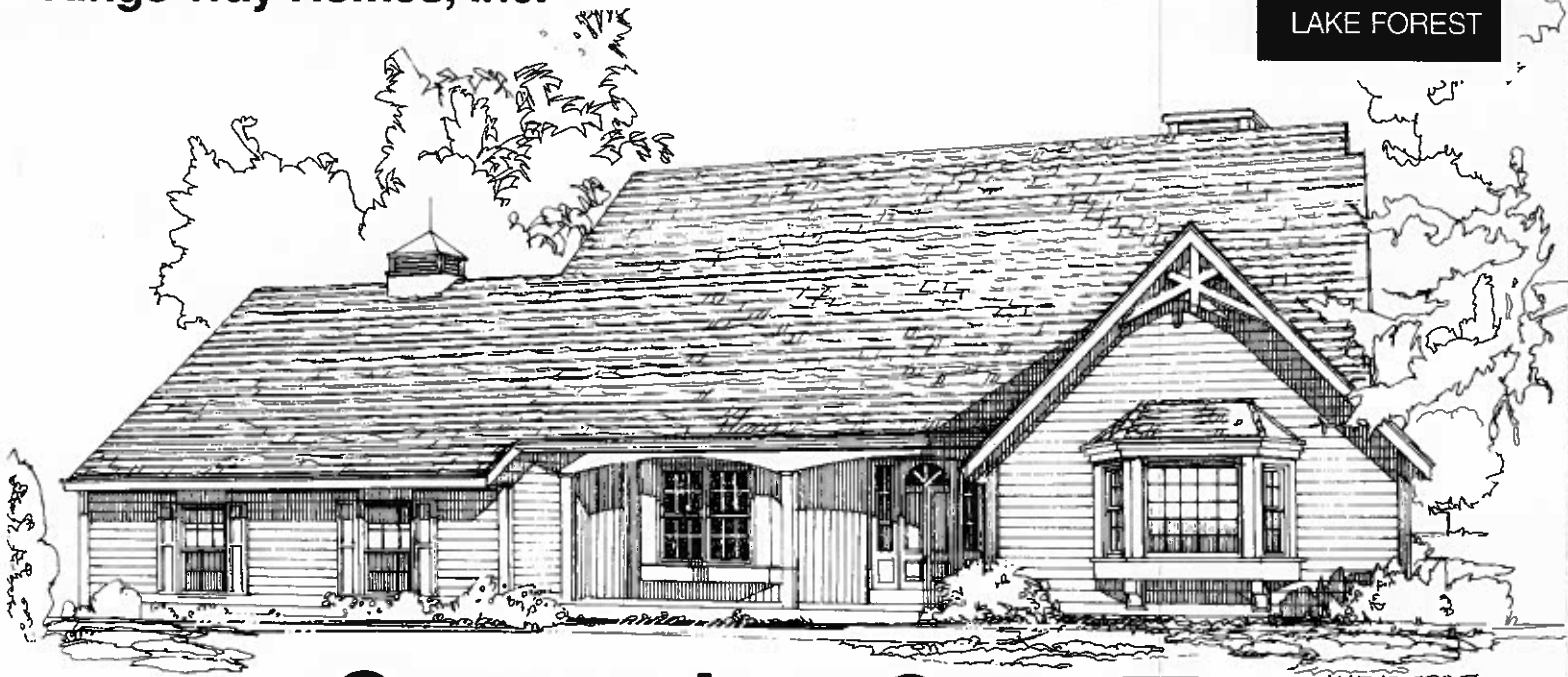
LAKE FOREST

MUSKEGOG



MODEL #	BUILDER	PLAN BOOK PAGE LOCATION
16	Kings Way Homes, Inc.	83
17	Open Hearth Homes, Inc.	87
18	Wimmer Bros. Bldg. Co.	89
19	Fireside Const. Ltd.	93
20	Gas Light Homes, Inc.	95
21	Cicero Builders, Inc.	99
22	Embassy Const. Corp.	101
23	Stenson Builders, Inc.	103

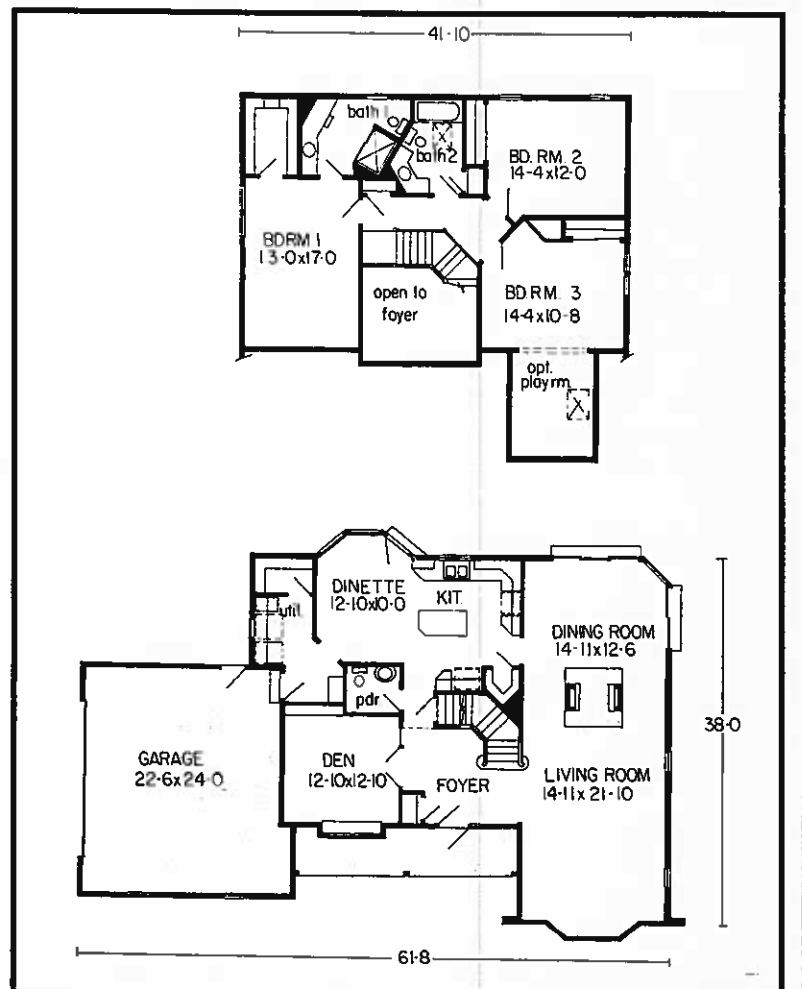
MODEL #	BUILDER	PLAN BOOK PAGE LOCATION
24	Bielinski Bros. Builders	105
25	Schmid Bros. Builders, Inc.	109
26	Fairway Homes, Inc.	111
27	Coventry Homes Ltd.	113
28	Jaeger-Turow Builders, Inc.	115
29	Lemel Homes, Inc.	117
30	Allan Builders, Inc.	119



Connecticut Cape II

Kings Way Homes premieres an exciting new cape, the Connecticut Cape II. This cedar-sided home offers approximately 2330 square feet of living space, with three large bedrooms and 2-1/2 baths. This is a comfortable family home with nine foot ceilings throughout the first floor and numerous extraordinary features including a see-through fireplace connecting the living and dining rooms, a two story foyer that opens onto a den with French doors and crown molding, a dinette surrounded on three sides by French patio doors, and a spacious kitchen with a center island and large pantry. The Connecticut Cape II's upper level includes quaint slant ceilings in two bedrooms (one with an optional playroom) and a skylight in the second bath. The master bedroom suite features a walk-in closet and a luxurious master bath uniquely designed on the diagonal. Custom touches like extra wide pine colonial trim, six panel doors, crown molding and a beautiful wooden staircase contribute to the home's elegance.

The Connecticut Cape II features Kings Way's exclusive Strongwall Construction. As always, Kings Way will gladly modify the design to make it uniquely yours without the expense of a complete custom design ... because Kings Way wants to make your new home the home of your dreams.



Kings Way Homes, Inc.

700 Pilgrim Parkway, Suite 100, Elm Grove, WI 53122

(414) 786-2822

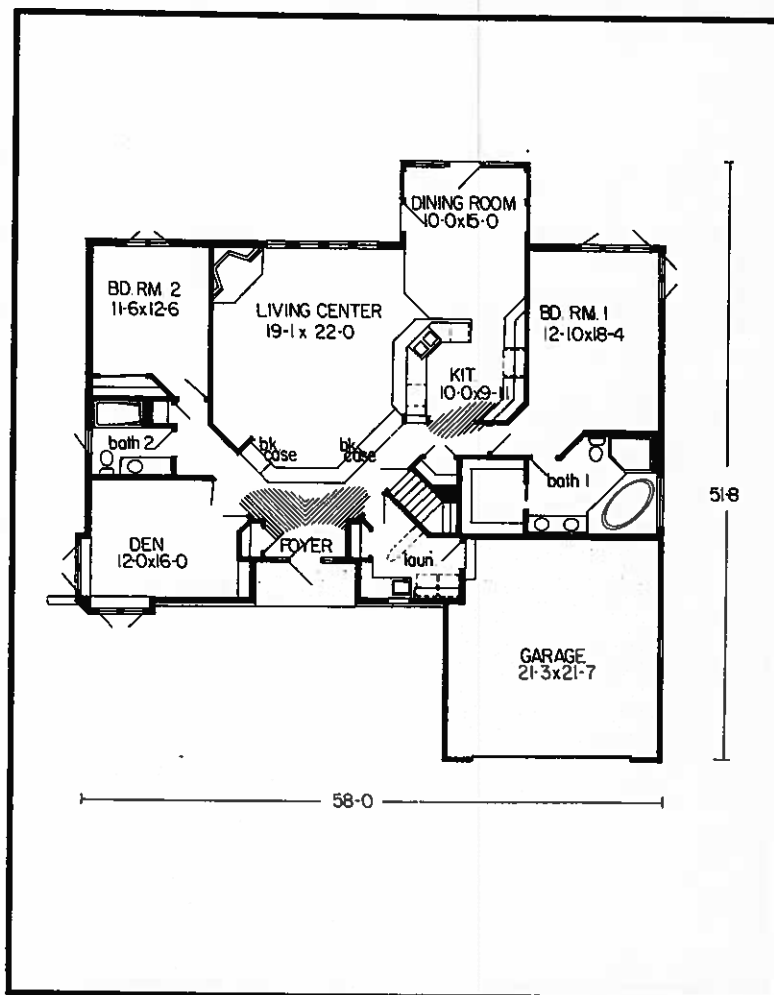


The Phoenix

Open Hearth Homes welcomes you to our exciting new design, The Phoenix. Our luxury one story home has all the amenities, livability, and design excitement of our larger custom homes.

The dramatic foyer leads you straight ahead to a massive raised living center with cathedral ceilings, corner fireplace, and unique window wall. The oak floor in the foyer continues into the kitchen and dining room with its wraparound snack counter, walk-in pantry, and three walls of glass garden doors. The secluded master suite features 10 foot ceilings, a luxurious bath with ceramic shower stall, two person whirlpool in a ceramic deck, double sink vanity, and a large walk-in closet. Separated from the master suite are the main bath, bedroom 2 and optional den/bedroom. The first floor laundry has it all, including sorting table with sink, built-in ironing board, upper cabinets, clothes pole and window.

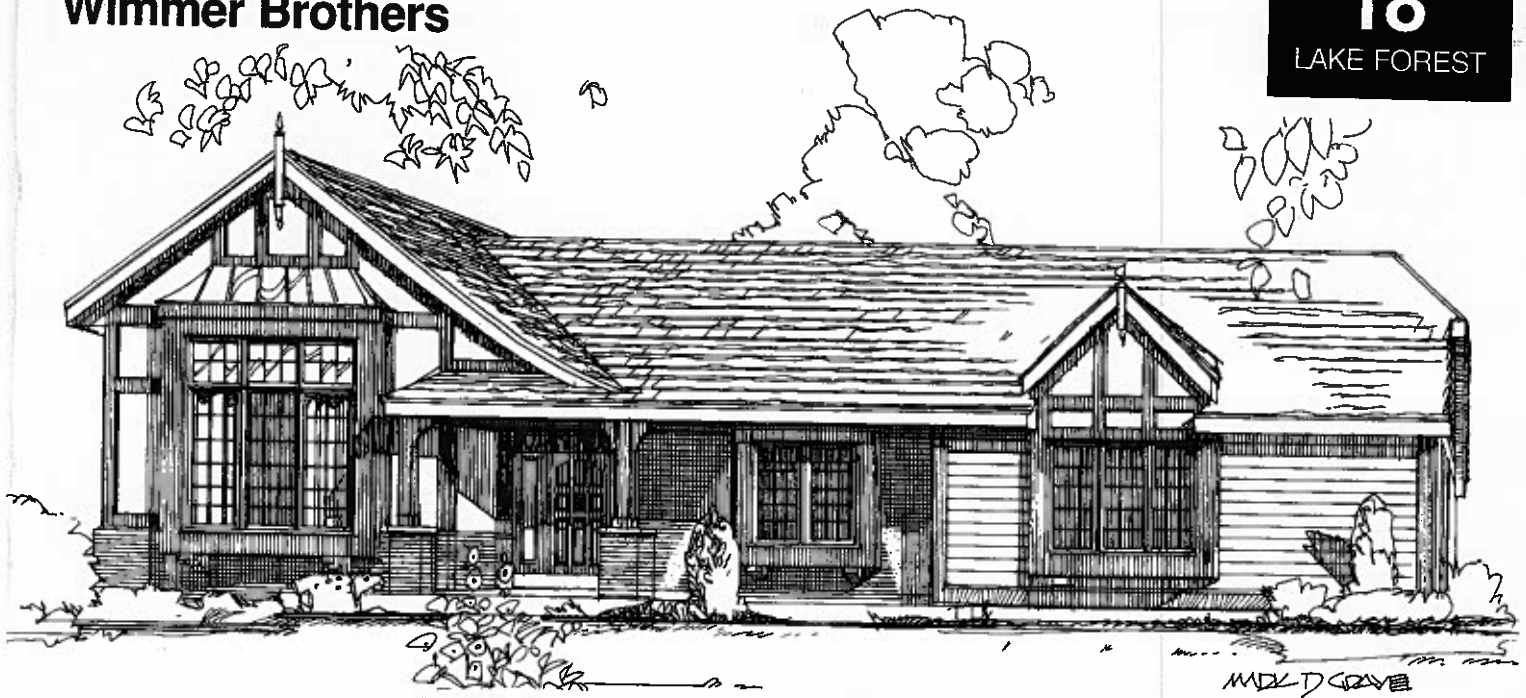
The 2023 square foot Phoenix also includes fieldstone and cedar exterior, covered porch, built-in bookcases, plant shelves, boxed out windows and complete energy package to compliment this unique design.



Open Hearth Homes, Inc.

555 Industrial Drive, Hartland, WI 53029

(414) 367-6601



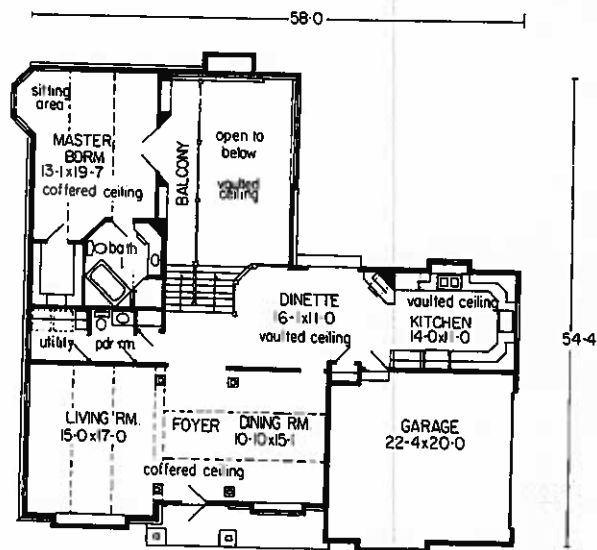
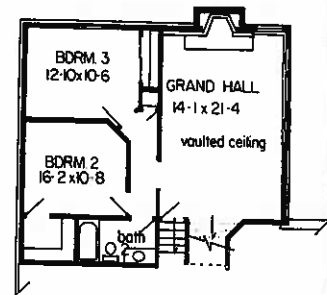
Cotswold Cottage

Wimmer Brothers proudly presents a very special residence expressed in the brick and timbered architecture of an English countryside estate. The Cotswold Cottage represents an expression of rich tradition that reaches for the extraordinary.

Enter the unique world of the Cotswold Cottage through the soaring foyer gallery with its fluted wood columns and trayed ceiling. The classic elegance flows through to the living room with an expansive window bay with reaching transoms and twenty foot coffered ceilings. The adjoining dining room accommodates twelve graciously under a soaring ceiling and brass chandelier. The gallery opens into the family quarters centered around a breathtaking study of commanding granite and furniture finished woodwork in the Great Hall. Surround yourself with towering window bays and the romantic glow of firelight in this dramatic study of voluminous ceilings and balconies. Overlooking this majestic Hall is the expansive family dining area and gourmet kitchen with handcrafted cabinetry and vaulted ceilings.

A balcony heralds your private retreat into the fresh and airy openness of the master suite. The expansive bed chamber and turreted lounge is served by a luxurious bath with a soaking tub and glass-walled shower. The children's wing in the lower level is self-contained with two large bedrooms and full bath. The first floor half bath and utility room, abundant closets, oversized garage and basement complete the fullness of design offered in the Cotswold Cottage. Offering over 2,600 square feet of distinctive Wimmer quality, the Cotswold Cottage boasts of energy efficient construction, hardwood millwork, and six panel doors.

Wimmer Brothers Building Dreams You Can Live In.



Wimmer Brothers 

5300 S. 108th Street, Suite #1, Hales Corners, WI 53130

(414) 529-3900

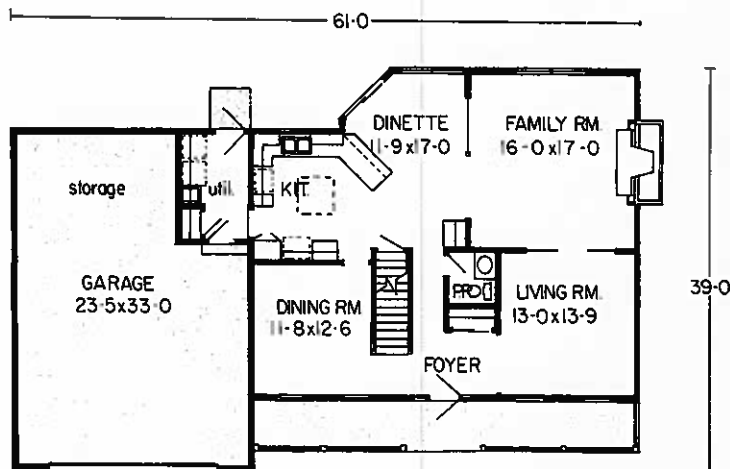
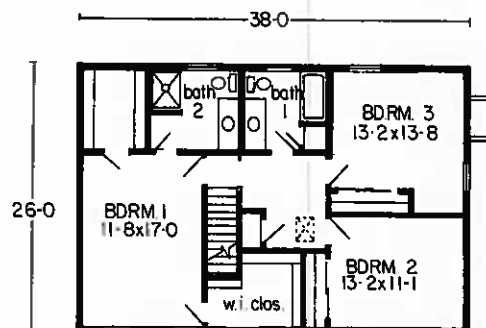


The Harrisburg

Welcome to another affordable dream by Fireside Construction, Ltd. The new Harrisburg model will surround you with comfort and livability. The center entry foyer introduces you to the formal living and dining rooms, perfect for your formal entertaining. The family room is separated from the living room by 6-panel pocket doors and features a full masonry fireplace with custom Oak mantle and surround. Crown moldings and chair rail accent the living room, dining room and family room. Your family and friends will love spending time in the spacious kitchen with bayed dinette and an abundance of custom Oak cabinets. The 1st floor utility room is an added convenience for today's lifestyle.

As you ascend the stairs to the 2nd floor, you will find 3 roomy bedrooms with ample closets. The master bedroom has plenty of wall space for furniture placement and includes his and hers walk-in closets. There is also a private master bath with shower stall and vanity.

The Harrisburg features prestained cedar siding on the exterior and a full porch for that feeling of yesteryear. We know you will love the quality features of this new model!



Fireside Construction, Ltd.
14665 Lisbon Road, Brookfield, WI 53005

(414) 781-9320



The Breckenridge II

THE BRECKENRIDGE II

Designed for the discriminating buyer who is looking for a home of distinction. Bright, open, and free flowing, yet practical and comfortable. The BRECKENRIDGE II brings it all together.

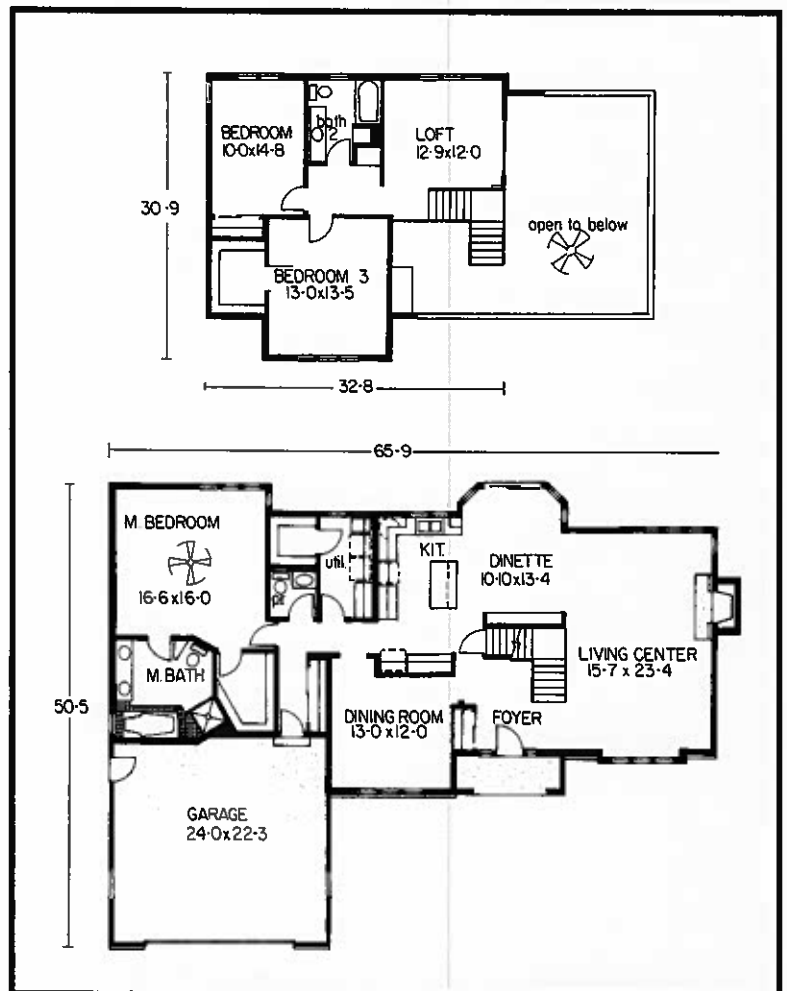
First treat your guests to a dramatic welcome in the two story Foyer. Proceed into the vaulted Living Center with its large fireplace and dynamic windows. Notice how space flows through the Living Center and into the Dinette where you will find abundant pantry space and an eye catching bay. Adjacent to the Dinette is the efficient, spacious Kitchen, featuring built in appliances.

Also on the first floor is the impressive Master Suite, featuring double lavatories, Jacuzzi whirlpool tub, ceramic shower stall with two walls of glass, plant shelves and a vaulted ceiling.

The stairway to the second floor is accented by a custom oak railing. The second floor boasts two Bedrooms, a full Bath, and a bright open Loft overlooking both the Living Center and the Foyer and featuring the same custom railing found on the stairs.

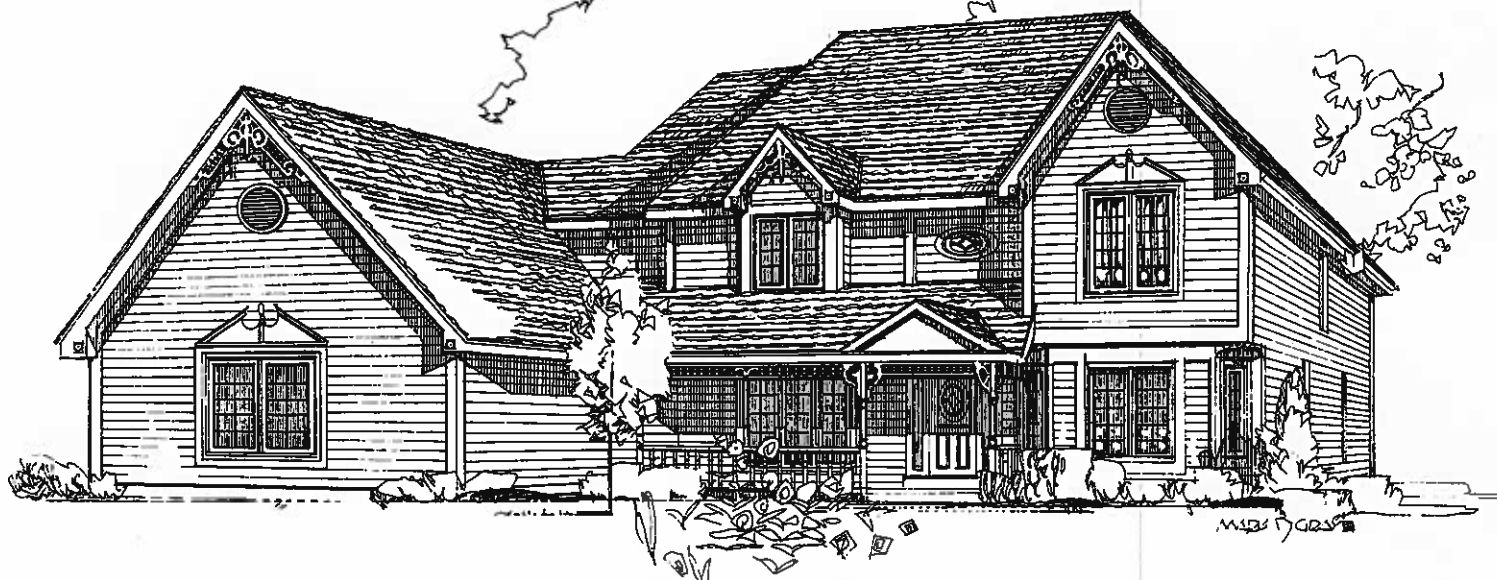
Abundant windows, vaulted ceilings, impressive two story views, and an open efficient plan make this home a pleasure to live in. The energy efficient design and quality construction make it a pleasure to own.

We have been building quality custom and model homes in the Milwaukee area since 1972 and we look forward to helping you make your dream home a reality.



Gas Light Homes, Inc.
2732 S. 163rd St., New Berlin, WI 53151

(414) 786-8118



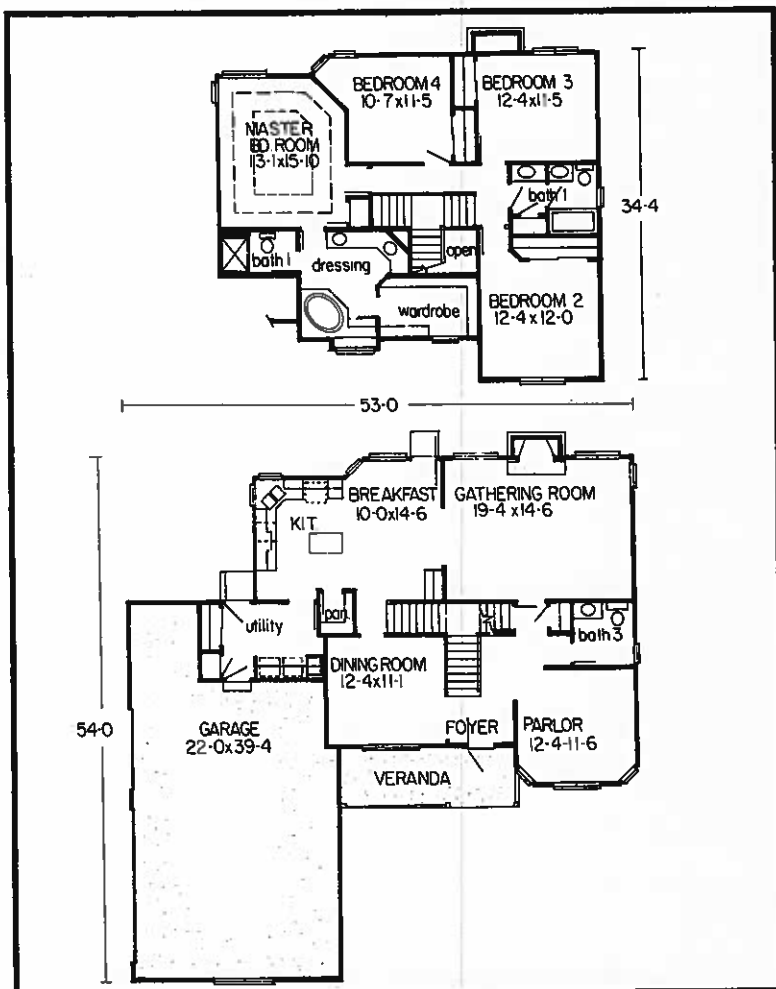
The Gables

"The Gables" charming Victorian style offering 2384 sq. ft. of luxury appointments. You will be impressed with the steeply pitched roof, covered front porch with wood railing, casement windows and rough sawed cedar beveled siding.

Enter the dramatic two story foyer and notice it is highlighted by oak floors and hampton railing to the second floor. A new feature is the T-shaped stairway which offers you access to the second floor from both the foyer and kitchen area. The foyer is flanked by the formal dining room and parlor, both have colonial crown molding with dentil board. The family room is large and airy with a beautiful energy efficient fireplace with wood surround mantle and wood beamed ceiling. Adjoining is the kitchen and breakfast area with oak floors. This well planned area provides an abundance of custom oak cabinets, island cabinet, planning desk and walk-in pantry. The large utility room provides access to the garage and leads to the rear yard.

The second floor master bedroom is stunning with its cathedral ceiling and elegant private bath with ceramic tile surrounded whirlpool tub, wrap around dressing vanity and twin sinks. A separate shower area and large walk-in closet complete the master suite. The remaining three bedrooms are generous in size and share a centrally located main bath. The bath is divided for privacy and features two sinks.

The Gables offers a large three car garage with storage area as well as the "Tuff-N-Dri" basement waterproofing system. This warm cozy home with loads of closets, combined with quality craftsmanship and superior design is sure to become a classic.

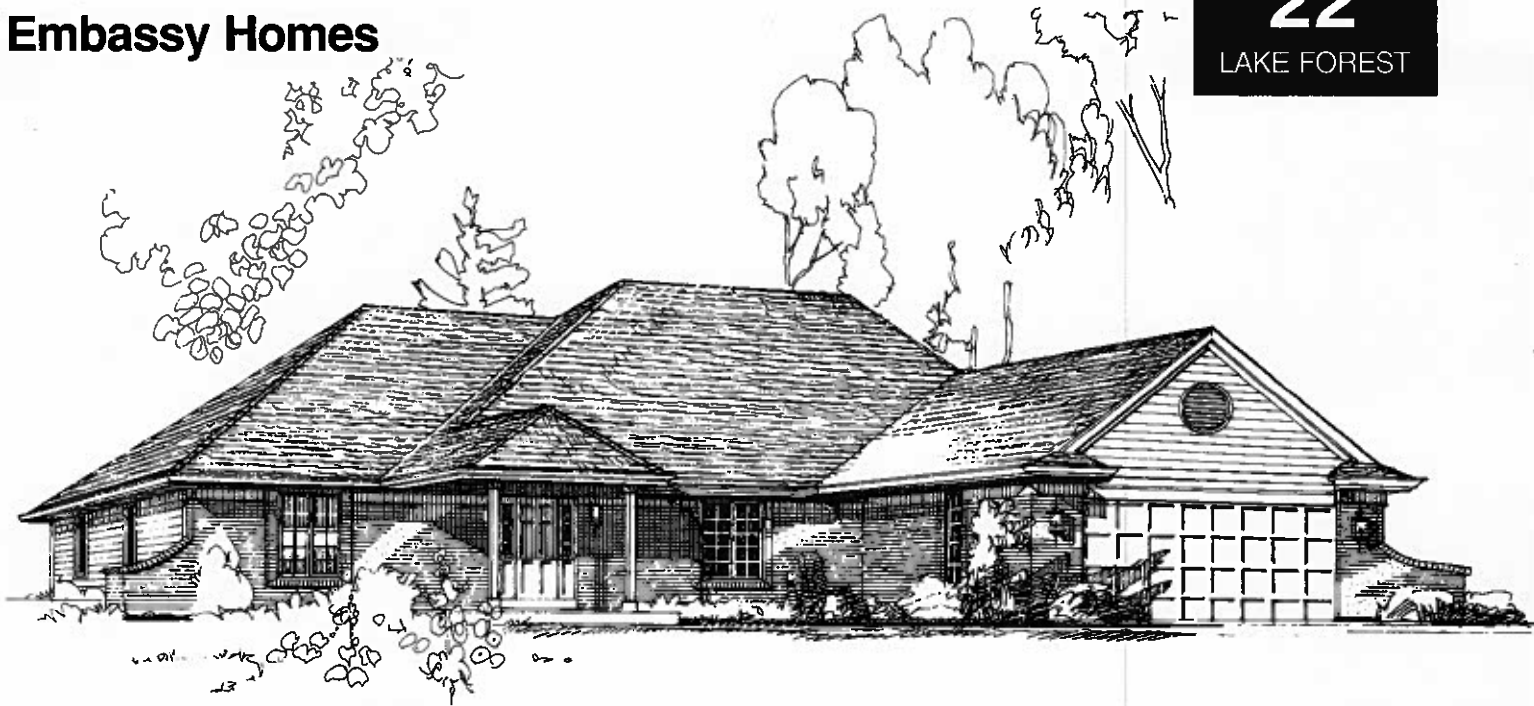


Cicero Builders, Inc.



S63 W13131 Janesville Rd., Muskego, WI 53150

(414) 529-3525



The French Manor

EMBASSY HOMES is proud to present THE FRENCH MANOR, a sophisticated 3-bedroom ranch with 1930 square feet of living space.

From the fine detailing of its full brick front to the stately elegance of its steeply pitched hip roofs, this home speaks of quality.

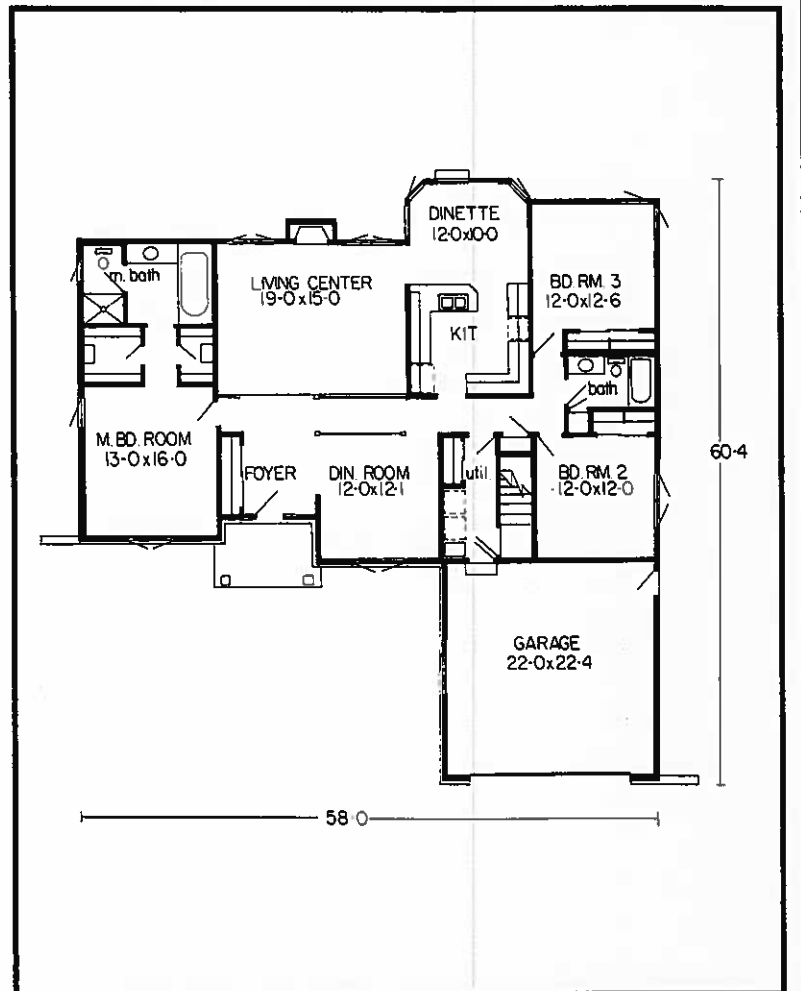
Spaciousness abounds in the design of this home, with volume ceilings heightening the foyer, dining room and living center. As you enter the foyer, the living center fireplace becomes your focal point.

The master bedroom is to the left of the entry and well segregated away from the other 2 bedrooms, garage and utility room. It features his and her walk-in closets and a uniquely styled bathroom. Notice that the shower and toilet are separate from the rest of the room to make efficient use of a husband and wife's time.

To the right of the entry is the formal dining area. It overlooks the living center yet is convenient to the kitchen. The kitchen has a spotlighted snack bar overhang and a dinette with angled bay. The main bath is convenient to both the kitchen and laundry room as well as the bedroom core. Two additional generous sized bedrooms complete this side of the home.

An efficient energy package is included in the base price. It features R-23 exterior walls, Tyvek house wrap, R-38 ceilings, all casement windows and 92% efficient Carrier SX furnace.

EMBASSY HOMES has been constructing quality custom built homes for over 30 years, Let us help you build your dream home.



Embassy Homes

9055E North 51st Street, Brown Deer, WI 53223

(414) 355-8510



The Queen Victorian

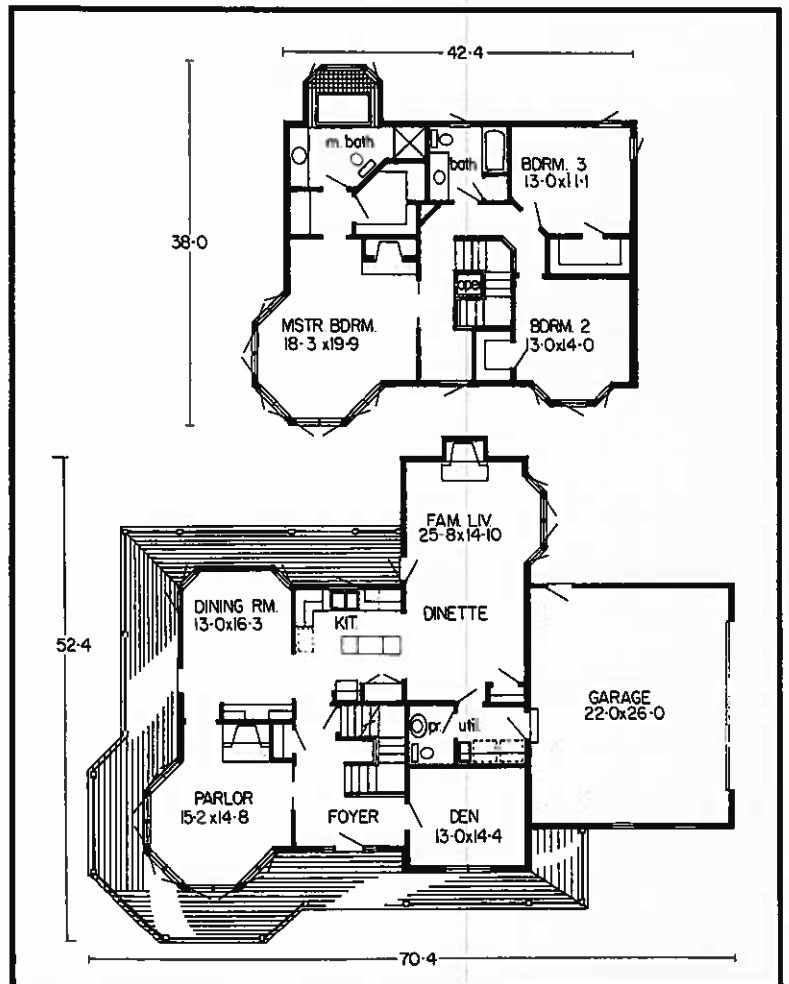
Here is beauty, elegance and comfort luxuriously combined in a masterpiece of Victorian design.

Its picturesque exterior, with a wrap around veranda and five sided tower, has all the grace and charm of another era.

This 2,800 square foot home is not only spacious, but is beautifully arranged. The dramatic entrance foyer, with winding staircase, is just a small preview of all the distinctive features to come.

Located in the first floor tower is the parlor that not only has a magnificent many angled view, but a fireplace as well. The party size dining room, large kitchen and spacious family living center with yet another fireplace will make entertaining comfortable and easy. The tucked away den allows for privacy as an office or guest room.

Upstairs are three generous bedrooms. The crown jewel of the second floor is the tower suite master bedroom. With a richly unique shape, romantic fireplace, and soothing whirlpool bath, it will become your private get-a-way. The Queen Victorian is truly a work of art.



Stenson Builders, Inc.

5745 S. 108th St., Hales Corners, WI 53130

(414) 425-4748



Pendleton

Nestled in the woods on a quiet cul-de-sac is the 1991 BIELINSKI Parade of Homes Model - The PENDLETON. This 4 bedroom, 2-1/2 bath, 2532 square foot home highlights many of the features that today's buyers seek. The Living Room features a 3-lite box window with wood seat and 15-lite French doors that lead into the more informal Family Room. A heat-circulating fireplace compliments the spacious Family Room and a wood rail with balusters keeps the openness of the floorplan, leading into the Morning Room. The Kitchen incorporates raised-panel oak cabinets, a spacious pantry, desk, an angled sink under a window and a snack bar. A bright, 5-sided Morning Room off of the Kitchen opens into the private, wooded backyard. Also featured on the 1st floor is a powder room and 1st floor utility.

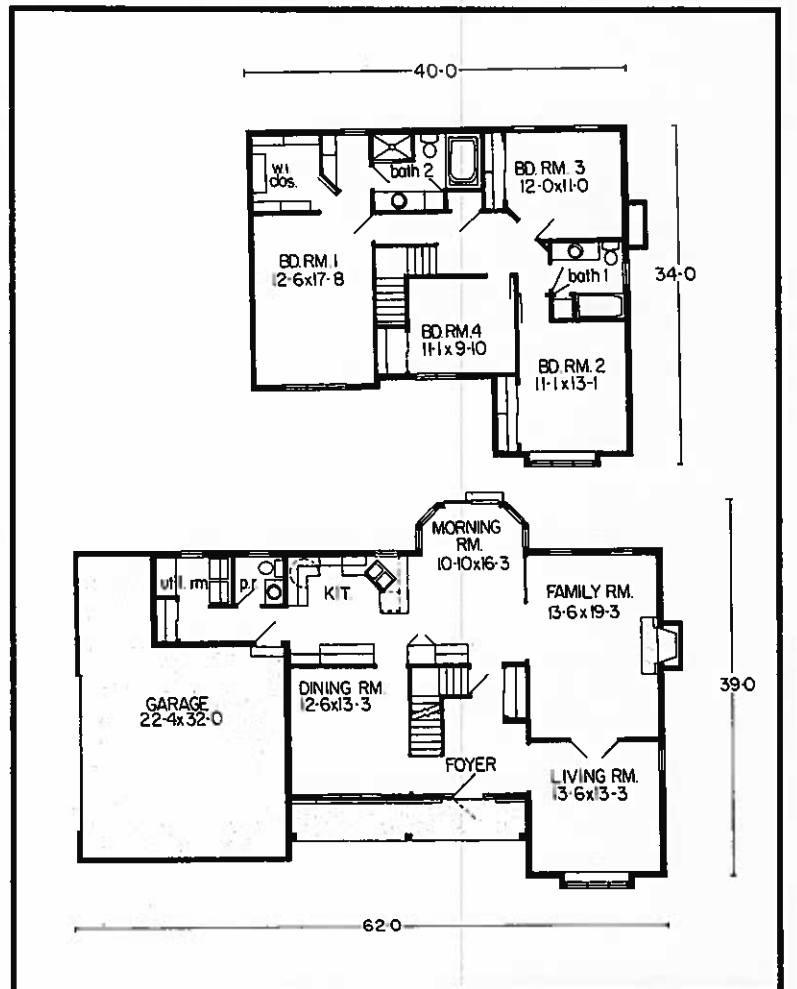
The second floor Master Bedroom Suite offers a large walk-in closet, personal dressing area with a window and a private bath that is brightened by a skylight and includes a whirlpool tub with a separate double shower. The remaining 3 bedrooms all feature large, double closets with high/low poles and shelves.

The cedar shake roof and cedar siding add to the natural-look of the home setting. Brick veneer at the front porch area and a copper roof over the boxed out window accent the Country English exterior of THE PENDLETON.

Let the BIELINSKI tradition of quality, design, and service featured in this home be a part of your next home. Our innovative designs and proven value are included in all of our models!



Bielinski Bros. Builders, Inc.
1240 S. Grand Avenue, Waukesha, WI 53186

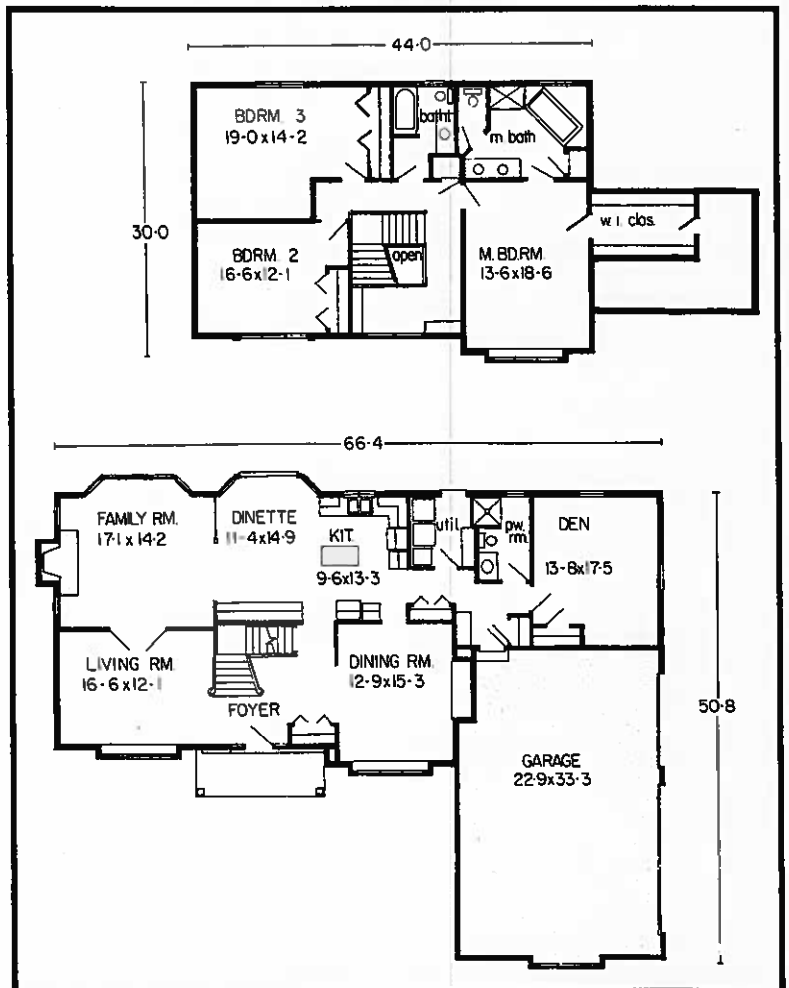


(414) 547-6181



Paramount II

Gables, bays, cedar siding and brick door trim give a distinctive look to the Paramount II. 3 car drywalled garage with storage area above garage. Approximate 3,000 sq. ft. All well proportioned rooms. Enter into this 2 story tiled foyer with vaulted ceiling and open stairway with oak railing. Living room and dining room flank foyer. Dining room has built-in china cabinet, oak chair rail, oak crown molding and oak flooring. Expertly planned kitchen is convenient to all areas with a center island, planning desk, canned goods cabinet, an abundance of cabinets with oak cathedral head raised panel door and oak flooring. Large family room with cedar ceiling, crown molding, bayed out window, fireplace with tile facing framed with oak pillars. Loft area at top of stairway from foyer includes desk, cabinet and bookshelves. Utility room, full first floor bath at garage entry plus a den or fourth bedroom. 3 bedrooms on 2nd floor. Master Suite with cathedral ceiling, large walk-in closet with 2 banks of storage shelves. Master bath with whirlpool tub, 2 sinks, separate shower stall and privacy water closet area. 2 other very generous bedrooms. Vinyl clad low E casement windows. 2" X 6" walls with R-50 ceiling insulation. Lennox pulse gas furnace, set-back thermostat and space guard air filter. 37 years experience in home building.



Schmid Brothers Builders, Inc.

3238 South 92nd Street, Milwaukee, WI 53227

(414)541-4280



Concord Colonial II

Welcome to the Concord Colonial II Model Home by Fairway Homes, Inc. the builder for the family of today. From our dramatic open stairs with wrap around upper hallway to the two way fireplace which gives you two rooms from which to enjoy your romantic fire, we stress charm and practicability. The Kitchen/Dinette area becomes a more efficient gathering room with the large center island. Our front entry utility room features a large closet and eliminates children passing through the garage. The first floor den has many uses from home office, computer room, sewing room to guest bedroom. Our three car garage eliminates that garage clutter so common today.

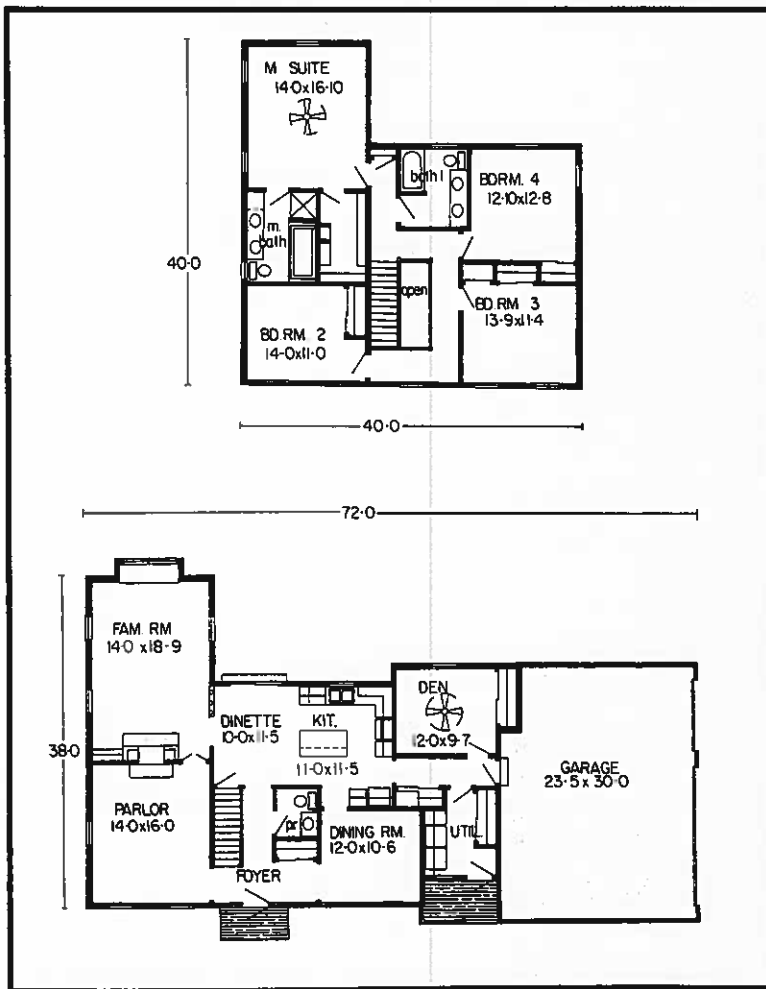
On the second floor our open hallway gives privacy to each of the four bedrooms, with double door closets in all but the master which features a spacious walk in closet. Both second floor baths feature double sink vanities and the master bath also has a whirlpool tub to help you end your busy day.

Quality and energy efficiency have also been standard in all our models since 1975. All exterior walls are 2x6 16" o.c. with a total R-Factor of R-28, attic areas are insulated to R-50, triple glazed windows and a Lennox Pulse furnace also assist in keeping your energy costs low. Colonial oak casing and base, six panel pine doors both 1st and 2nd floor, crown molding, oak wainscot and chair as shown are part of our standard model. Please consult with a member of our sales staff on our different models and a variety of other exterior elevations and options for your Fairway Homes Model.



Fairway Homes, Inc.

575 N. Dousman Road, Oconomowoc, WI 53066

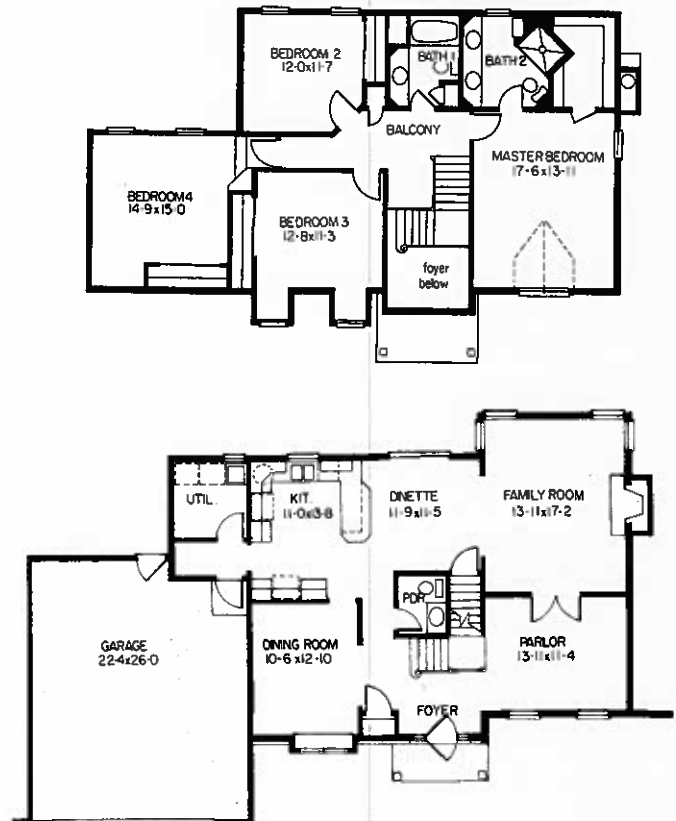


(414)965-2100



Elite III

Since the inception of the first Elite, discriminating home buyers have found its design answering the many needs of their modern day lifestyle without requiring submission to mundane styling. The Elite III takes this a step further and shows, once again, that exciting styling can provide an underlying design of practical, thoughtfully planned spaces. From its classic cape exterior styling with steeply pitched roofs, to its thoughtfully planned interior, the Elite III is a feature-packed home. As soon as you enter the two story foyer, with its oak balustered stair and 2nd floor balcony, you know it is a unique and inviting home. The large, bright, kitchen/dinette that includes many features usually found in more expensive homes, may become your favorite room. Or perhaps you may picture yourself with the daily gathering of family or entertainment of friends in the large Family Room joined by french doors to the Living Room. Evenings bring ample accommodations in each of the four large bedrooms. The Master Bedroom is a retreat in itself, with its soaring cathedral ceiling and intersecting dormer cathedral ceiling that captures the light and beauty of the large sunburst window. A Master Bedroom bath, abundance of closets, formal Dining Room and conveniently located Laundry Room make up the balance of the 2518 sq. ft. The Elite III is another reason that Coventry Homes, Ltd. is recognized for its perfection in home building. From the drawing board to completion, it is "Perfection by Design."



Coventry Homes, Ltd.

16735 W. Greenfield Ave., New Berlin, WI 53151

(414) 821-5678



Synergy Integrity

A one and a half or two story basic traffic pattern, 1927-3500 plus sq. ft., two to five bedrooms - this flexible design that JAEGER-TUROW BUILDERS, INC. calls SYNERGY, has put on a stunning new face and added some exceptional surprises to become the SYNERGY INTEGRITY.

The INTEGRITY loves the sun. Big, beautiful casement windows (partial to backyard views) invite light and fresh air into each room.

Spaces designed to be shared are enhanced by dramatically high ceilings while personal areas are cozy.

With its first floor master suite, the INTEGRITY lives like a bath and a half ranch on the first floor. Two bedrooms, a sitting room/loft, and full bath on the second floor comprise an "apartment" for children now, guests later, and perhaps an aging relative at some future date.

Other SYNERGY plans provide:

Both a living center AND a family room on the first floor with three bedrooms on the second floor,

OR one or two bedrooms downstairs and two or three bedrooms upstairs,

AND wonderful sunrooms.

All JAEGER-TUROW BUILDERS, INC. homes are distinctive by design and better built through conscientious effort. They offer you more than you'd imagine for less than you'd expect to pay. They are always superb values.

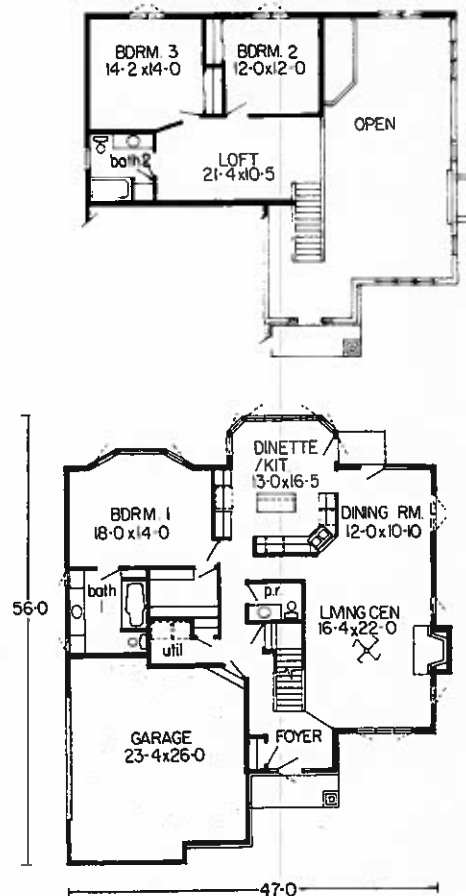
Give the INTEGRITY (or any of our wide variety of models) your heart, you will be abundantly rewarded with contemporary elegance, easy adaptability, and affordable excellence.



Jaeger-Turow Builders, Inc.

W331 N6070 Highway C, Nashotah, WI 53058

(414) 367-4663





The Windwood

From the minute you come inside you know that this is a home extraordinary in every aspect. Like the foyer, beginning on the lower level and opening up all the way to the second floor. This two-story openness continues with dramatic vaulted ceilings in the living and dining rooms. The focus of this home is definitely space and elegance.

Adjacent to the foyer is a centrally located den, office or "anything" room. Built-in bookcases add the touch of class to this very versatile room.

The step-saving design of the kitchen and dinette area is a homeowner's dream. The deluxe kitchen features an abundance of cabinets, a huge walk-in pantry and a snack counter that opens to the dinette. The dinette projects out into a bay surrounded by windows.

Nine foot patio doors and a rich looking, natural fireplace accent the family room with light and warmth for a total feeling of casual comfort.

You can stand on the upper level landing at the top of the stairway and look out and over the lovely rooms below. This view is enough to take your breath away. The Windwood is truly beyond the ordinary.

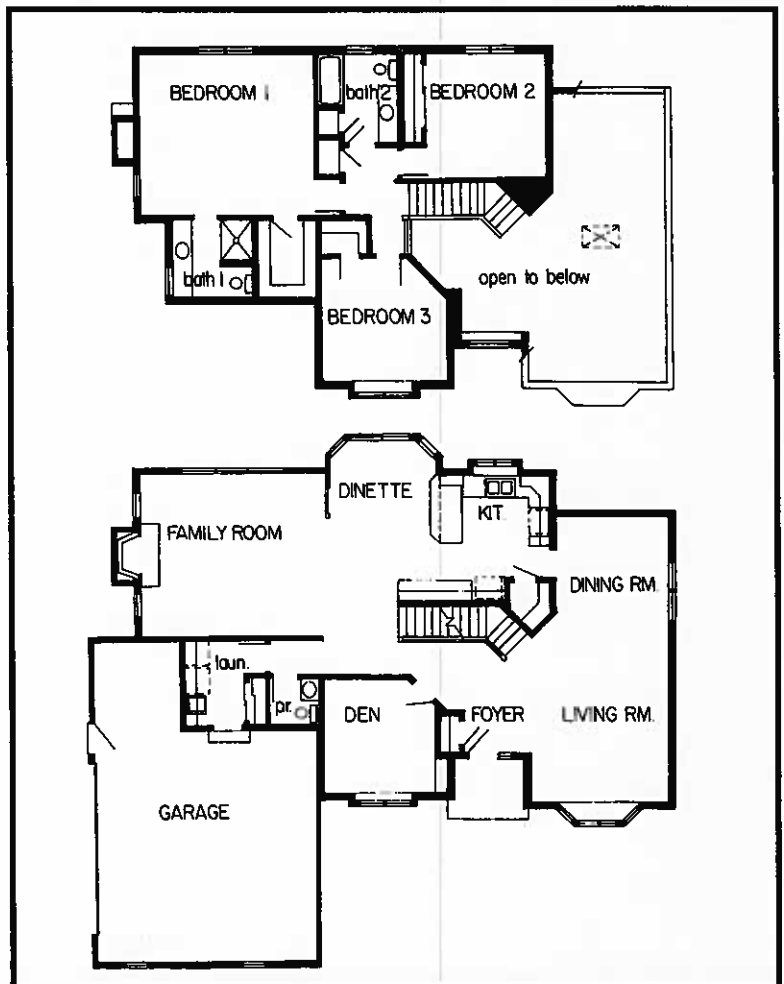
Just beyond the landing is a perfectly placed, private master suite which offers the convenience of a personal full bathroom and walk-in wardrobe closet. Two big bedrooms and another full bath complete the upper level.

The Windwood . . . a twist on tradition that you can treasure forever.



Lemel Homes, Inc.

7161 N. Port Washington, Glendale, WI 53217



(414) 228-1800



Hilltopper III

Allan Builders, Inc. proudly presents the Hilltopper III, a spacious 2,800 sq. ft. two story with four bedrooms, 2-1/2 baths, family room, formal living and formal dining room with butlers pantry.

Building quality homes for over 20 years blends the best of traditions. When entering the ceramic floored foyer, one can observe the open oak classic railed staircase leading to the second floor with three oversized bedrooms and open loft with a skylight, oak built-in bookshelves and desk.

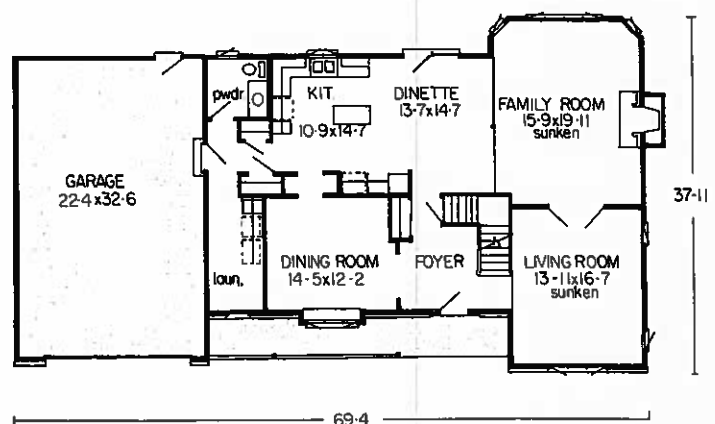
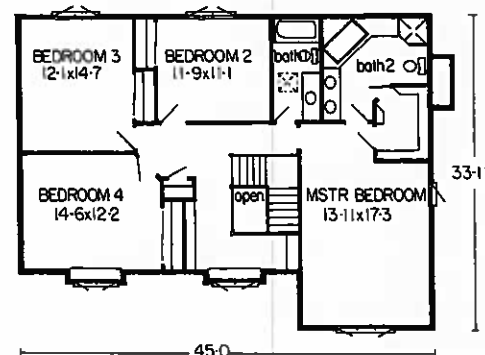
The master bedroom suite offers a relaxing atmosphere, cathedral ceiling with acoustical spray, circle top window.

A master bath with skylight, whirlpool tub set in a ceramic tile deck, over sized vanity with double sinks, neo angle shower with glass enclosure.

The convenient kitchen features custom oak raised cathedral cabinets, work island center. Open concept to our sunny full bayed sunken family room with oak surround fireplace, all Low-E and clad windows are one of the standard features.

First floor utility room with built-in ironing center leads to a 22 ft. by 32 ft. garage.

All of these outstanding features are wrapped into our energy efficient homes, whether we build from our plans or from your own design, we aim to please.



Allan Builders, Inc.

6574 Stonefield Way, Oconomowoc, WI 53066

(414) 966-7466

Pre-Completion Prices



Phase I

Lot	Square Ft.	Price	Lot	Square Ft.	Price
1	15,000	\$33,900	139	17,250	\$31,900
2	18,270	35,900	140	16,590	31,900
3	18,450	37,900	141	15,950	31,900
4	18,110	37,900	142	15,580	29,900
5	17,320	37,900	143	16,380	29,900
6	15,750	37,900	144	16,100	29,900
7	18,110	37,900	145	16,100	29,900
8	17,320	35,900	146	16,100	29,900
9	15,750	37,900	147	16,310	31,900
10	16,120	37,900	148	15,750	35,900
11	16,270	37,900	149	15,120	33,900
12	17,320	37,900	150	16,260	33,900
13	17,730	37,900	151	16,250	33,900
14	16,010	37,900	152	16,450	40,900
15	16,220	37,900	153	16,220	40,900
16	16,220	35,900	154	17,600	37,900
17	16,670	43,900	155	16,010	37,900
18	17,330	43,900	156	16,380	37,900
19	17,550	43,900	157	16,770	40,900
20	15,670	43,900	158	15,000	40,900
21	15,000	43,900	159	16,800	40,900
22	15,570	35,900	160	16,280	37,900
23	16,950	35,900	161	15,470	37,900
132	17,250	35,900	162	16,850	40,900
133	21,450	35,900	163	15,620	40,900
134	16,900	35,900	164	15,120	37,900
135	15,280	33,900	165	16,800	37,900
136	15,000	33,900	166	19,200	37,900
137	15,000	33,900	167	15,050	33,900
138	10,670	31,900	168	15,750	29,900

Please Note:

* Size of lots are approximate

* One acre = 43,560 Sq. Ft.

Prices Subject to Change
Without Notice.