



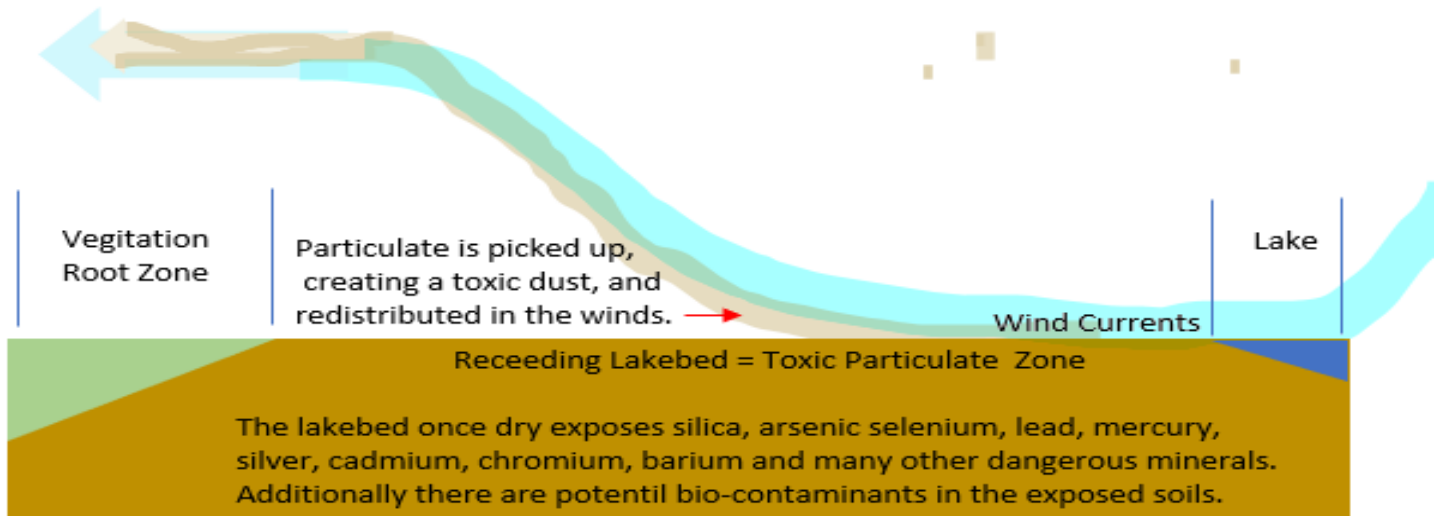
Keeping it Green

Environmentally Sound, Seamless,
Toxic Airborne Particle Containment for **Dry Lakebeds**

- ESG Guidelines
- Compliant
- **GO Green** Certified
- Compliant
- Red Line Certified
- Compliant
- NSF Certified Compliant
- USEPA Compliant
- USFDA Compliant
- USACE ASTM Compliant
- LARR Compliant
- CSI Compliant
- LEED Compliant
- Contains RCRA 8 Metals At Newest EPA ppb Requirements



Stop Airborne Particle Contamination The Dry Lakebed Toxic Dust Challenge in Simplistic Terms



As a lake recedes, exposing the dry lakebed, it leaves the loose soil of the lakebed exposed to the elements. As the wind picks up and blows across the dry lakebed, toxic biological and elemental particles become airborne. These toxic particulates cause illness and deadly disease in near, exposed, animals, birds, and the human populations.

Product Description

Patent pending, Pro-SealECCO (db)TM is a Green, Nano Novel Matrix dry lakebed basin semi-structural soil stabilization primary leachate containment system. This Pro-SealECCO primary containment for dust and leachate system, designed by Pro-Seal labs, binds in leachates to soil, it contains toxic leachates as well as low level radiation, PFOS, PFAS, and methane, hazardous particulates to include RCRA 8 metals in site soil.

Qualified projects Pro-SealCorp[®] may provide warranties subject to Pro-SealCorps[®] Inc's requirements and corporate approval. The Pro-SealECCO system is custom designed site soil specific to integrate dust, leachate, and other particulate hazards.

Pro-SealECCO System (db) lakebed soil stabilization incorporates in situ infusion of semi-structural soil additive to stabilize and control dust and mud on dry lakebeds.,

These Pro-SealECCO (db) systems are a rapid install process. A trained eight-man crew, with eight typical pieces of equipment and one supervisor are able to apply stabilization at a rate of up to one-point-five acres per day of the stabilization system. Application rates are soil type, topography, and equipment dependent.



No project is too big or too small it is all about the equipment.



The tables (below) display the leach limits in ppm/ppb of materials after a thirty-day exposure to the pH 3.0 sulfuric acid leaching medium. Dr. J. Lee CO School of Mining, formerly U of A, modified the TCLP to more stringent leaching medium, more tumbling and longer exposure limits to reflect industrial site working conditions. These extreme modifications far exceed the 18 hour acetic acid pH 3.4

leaching exposure limits parameters of the standard TCLP testing required by the EPA. The laboratory results are published herein for review. Modified: All Soils specimens mixed with Pro-Seal additives, cured 30 days, tumbled 30 days, in 3.0 pH sulfuric acid, sampled, after initial 72 hours, every 24 hours and analyzed.

Leachate from Pro-SealECCO Tailing Soil	Description	ppm
Volatile Organic Compounds	V.O.C.	0.0000
Arsenic	AS	0.0005
Mercury	Hg	<.01
Zinc	Zn	0.0300
Copper	Cu	0.0300
Nickle	Ni	0.0300
Iron	Fe	0.0300
Manganese	Mn	0.0002
Chromium	Cr	0.0005
Vandium	V	0.0100
Calcium	Ca	0.3000
Potassium	K	45.3000
Aluminum	Al	0.0010
Magnesium	Mg	0.0002
Sodium	Na	0.3000
Argentum	Ag	0.1800
Aurum - Gold	Au	0.0100
Barium	Ba	<0.01
Berylium	Be	<0.01
Bismuth	Bi	<0.01
Cadmium	Cd	<0.01
Cerium	Ce	<0.01
Cobalt	Co	<0.01
Dysprosium	Dy	<0.01
Erbium	Er	<0.01
Europium	Eu	<0.01
Gallium	Ga	<0.01
Gadolinium	Gd	<0.01

Leachate from Pro-SealECCO Tailing	Description	ppm
Hafnium	Hf	<0.01
Holmium	Ho	<0.01
Lanthanum	La	<0.01
Lutetium	Lu	<0.01
Molybdenum	Mo	<0.01
Niobium	Nb	<0.01
Neodymium	Nd	<0.01
Phosphorus	P	<0.05
Plumbum - Lead	Pb	<0.01
Praseodymium	Pr	<0.01
Rubidium	Rb	<0.01
Rhenium	Re	<0.01
Sulfate	S	0.03
Antimony	Sb	<0.01
Selenium	Se	<0.01
Samrium	Sm	<0.01
Stanum	Sn	<0.01
Strontium	Sr	1.1
Terbium	Tb	<0.01
Tellurium	Te	<0.01
Titanium	Ti	<0.01
Thallium	Tl	<0.01
Thulium	Tm	<0.01
Uranium	U	<0.01
Wolfram	W	<0.01
Ytterium	Y	<0.01
Ytterbium	Yb	<0.01
Zirconium	Zr	<0.01

Modified EPS TCLP Test: PFAS contaminated soil mixed with 24% additive, cured 30 days, tumbled, exposed in pH 3.0 sulfuric acid 30 days, samples drawn every 24 hours and analyzed, after initial 72 hour exposures.

Contaminant	PFOS	PFHxS	PFHxA	PFOxA			
% of total PFAS by type in soil	74	15	3	2			
Total PFAS ppb 3767	2738	555	111	74			
Soil Type	Soil % Additive %		Leached Results ppb				
Silty Sand	Additive All Specimens' 24%	76	24	0.0110	0.0070	0.0001	0.0000
Sandy Clay				0.0107	0.0074	0.0001	0.0000
Fatty Clay				0.0105	0.0071	0.0001	0.0000





Before

The Dry Lakebed Soils Open and Exposed to Wind



1. Grade To Slope and Drain



2. Wet To Specified Moisture Content



3. Spread Pro-SealECCO NanoCrete



4. Mix in situ (in place)



5.a Drum roll flats for deep compression



5b. Drum Roll slopes for deep compression



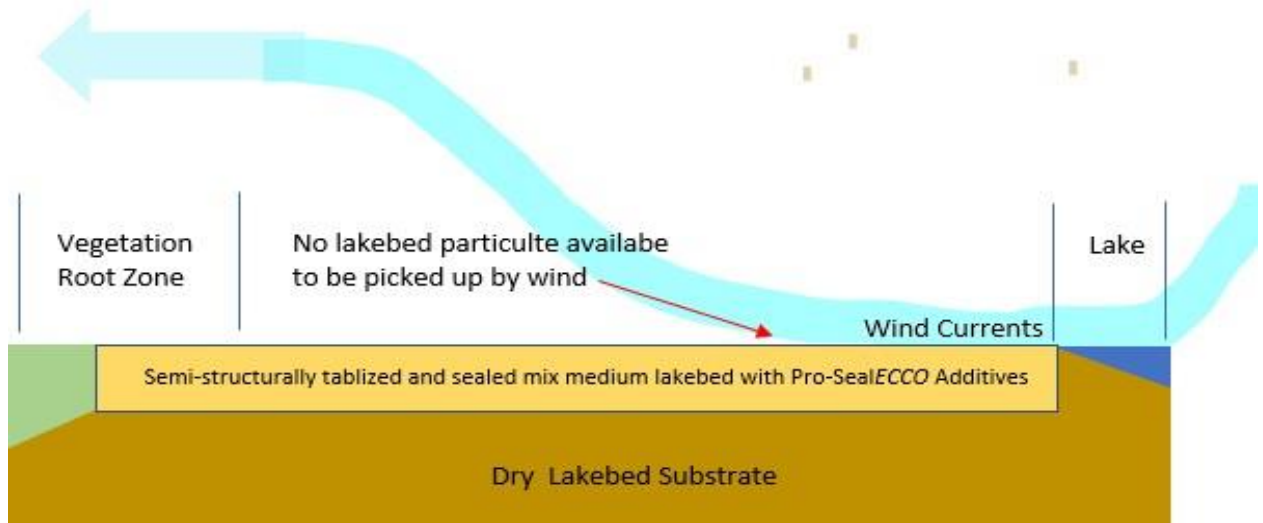
6. Spread Pro-SealECCO TopR.O.C.



7. Pneumatic roll for surface densifying

.... After

Pro-SealECCO Treated Dry Lakebed Soils Open and Exposed to Wind





Communication With Pro-SealCorp Is Easy !



Keeping it Green

- We love our clients !
- Clients love our customer experience !

Contacts:

Call: USA/CND: 800 349 7325

Int'l: +1 520 704 4010

Email: information@prosealecco.com

- ESG Guidelines
- Compliant
- GO Green Certified
- Compliant
- Red Line Certified
- Compliant
- NSF Certified Compliant
- USEPA Compliant
- USFDA Compliant
- USACE ASTM Compliant
- LARR Compliant
- CSI Compliant
- LEED Compliant
- Contains RCRA 8 Metals At Newest EPA ppb Requirements

Cautions:

Keep out of reach of children. May cause skin or eye irritation. This product may be harmful if swallowed. Do not induce vomiting. Use in well ventilated areas. Contact a physician immediately and always seek a physician's advice regarding first aid. Use only in commercial or industrial applications. Use only on intended surfaces. Contact manufacturer for specific application uses. See material safety data sheet for additional cautions. All test results herein are based upon laboratory test results field results may vary. Most system components meet or exceed compliance.

Limited Warranty:

We warrant our product to be free of defects in material and workmanship; and to be in accordance with our company quality control standards. All data, statements, and recommendations, made herein are based upon information we believe to be dependable. Said information is made without any representation, guarantee, or warranty of accuracy. Pro-SealCorp products are sold on the condition that the user will evaluate them, as well as our recommendations, to determine their suitability for the user's own purpose before adoption.

Statements made by any persons regarding the use of our products or processes are not recommendations for their use in violation of any patent rights or in violation of any applicable laws or regulations. Liability under any condition shall be limited to, replacement of material only. No statement claim verbal, written, paper medium, electronic medium or any other known or unknown medium made by independent representation, dealers, distributors or any third parties whatsoever that are not in written form, nor authored and/or distributed by Pro-SealCorp Inc.



12995 N Oracle RD, Suite 362, Tucson, AZ 85739

TF USA/CND:800 349 7325 Int'l +1 520349 7325

Email: information@prosealcorp.com

Web: www.prosealecco.com © Copywrite Pro-SealCorp Inc.



Division of Pro-SealCorp

Keeping it Green

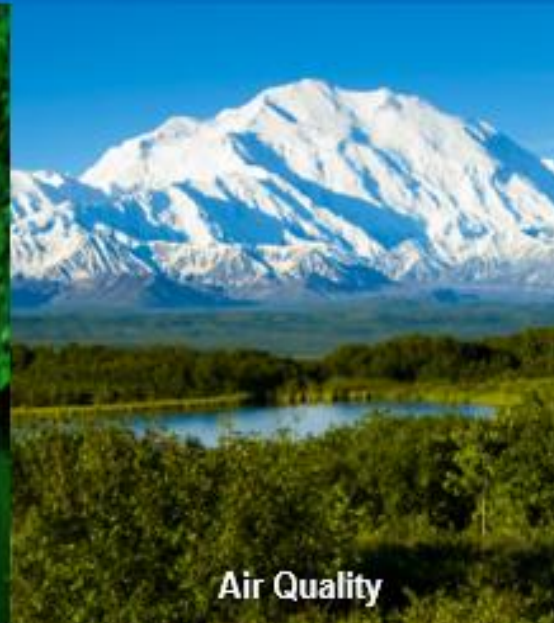
Pro-SealECCO Green dust Control Systems, partner with us to protect our ...



Children



Groundwater



Air Quality



Fisheries



Agricultural Lands



And Bio-habitats



Division of Pro-SealCorp

12995 N Oracle RD, Suite 362, Tucson, AZ 85739

TF USA/CND:800 349 7325 Int'l +1 520349 7325

Email: information@prosealcorp.com

Web: www.proseallecco.com © Copywrite Pro-SealCorp Inc.