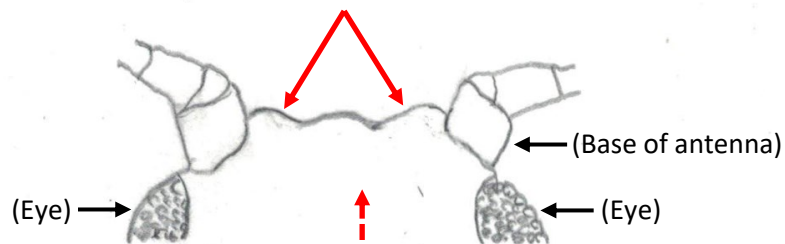


Aphid characters useful for identification (wingless adult forms)

Antennal (frontal) tubercles

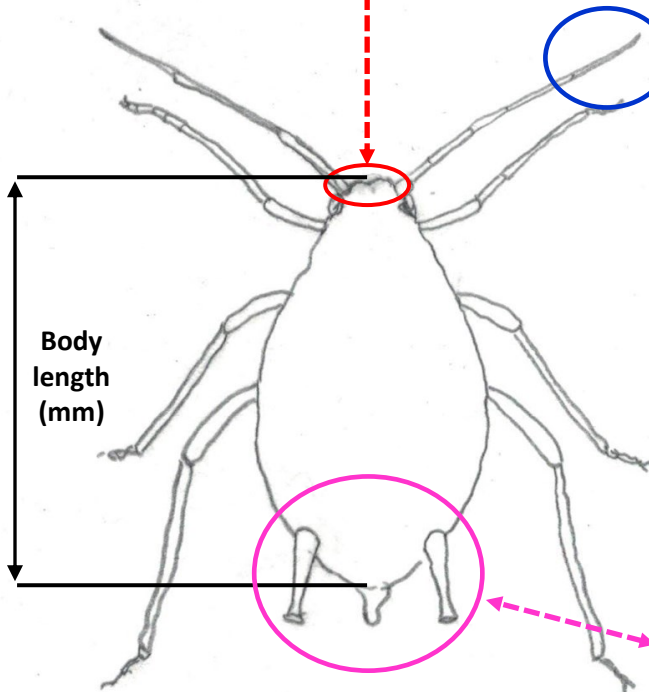
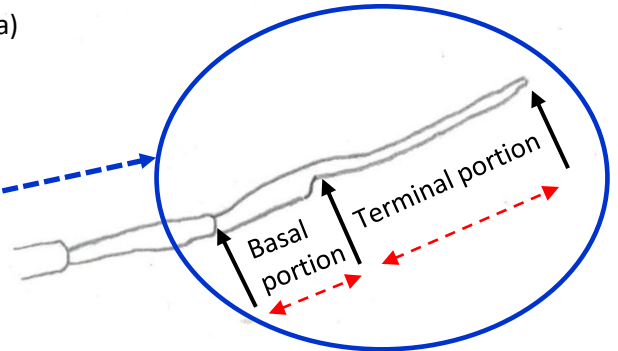
(The part of the head next to the 1st antennal segment)

(Note direction of inner sides as viewed from above)



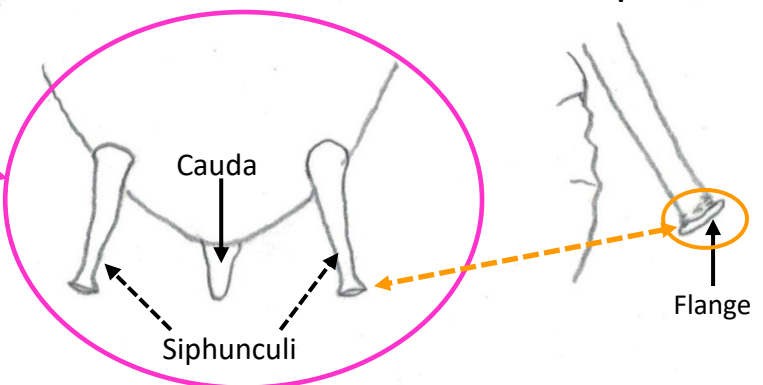
Last antennal segment

(Note length of terminal portion compared to basal portion)



Shape & lengths of cauda and siphunculi

Presence or absence of flange at tip of each siphunculus



Shape of inner faces of antennal tubercles

(Viewed from above)

