

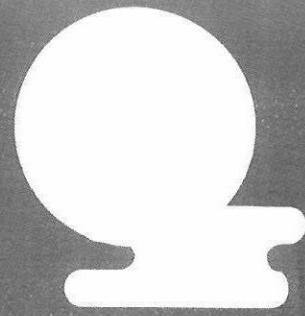
What to do if you find a needle?

1. Do not be alarmed.
2. Get a heavy plastic container, that will not break easily, with a tight lid (e.g. used bleach bottles).
3. Bring the container to the needle and place it on the ground (somewhere it will not tip over).
4. Wear rubber cleaning gloves to protect yourself.
5. NEVER recap a needle!!
6. Do not touch the needle with your hands. Use BBQ tongs, pliers or another gripping tool to pick up the needle.
7. Put the needle into the container sharp end first.
8. Put the lid on the container.
9. A small number of needles, in a tightly closed heavy plastic container, can be put in a household garbage.
10. Wash your hands after you are finished.

Tell children never to pick up a needle and let an adult know if they find one.

Contact your town office for pick up & disposal:

(709) 785-5232



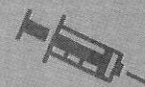
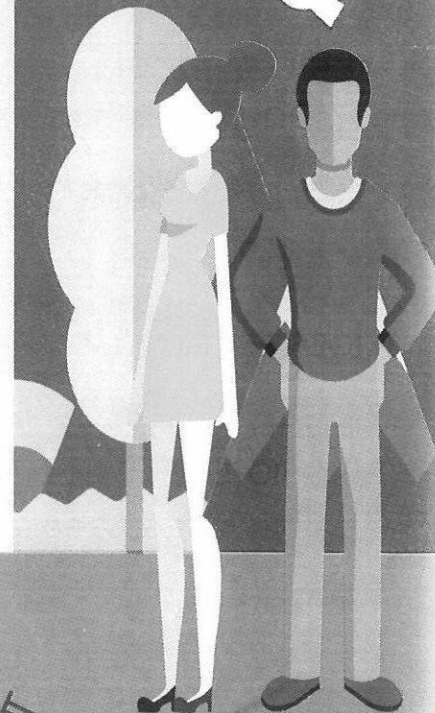
You will need:

Heavy plastic container

Heavy rubber gloves

Gripping tool

Soap and water



Eastern Health



Central Health



Western Health



Labrador-Grenfell Health

Improperly disposed needles are becoming more common in public and private spaces.

In Newfoundland and Labrador the property owner is generally responsible for cleanup and maintenance of properties. Some municipalities may have staff trained to deal with needles so it is a good idea to contact your town hall and report the location and type of needles found. However, there will be times when you will want to remove the risk to family and loved ones immediately.

How to handle needles

What you will need:

- A heavy gauge plastic container with a tight lid that will contain the sharp points. Used bleach bottles are great, designated sharps containers are the best!
- Heavy rubber cleaning gloves are a good idea to protect yourself but any gloves will do.
- BBQ tongs, pliers or some other gripping tool that will allow you to pick up needles without having to handle them directly are recommended.
- Access to soap and water.

Collecting Needles:

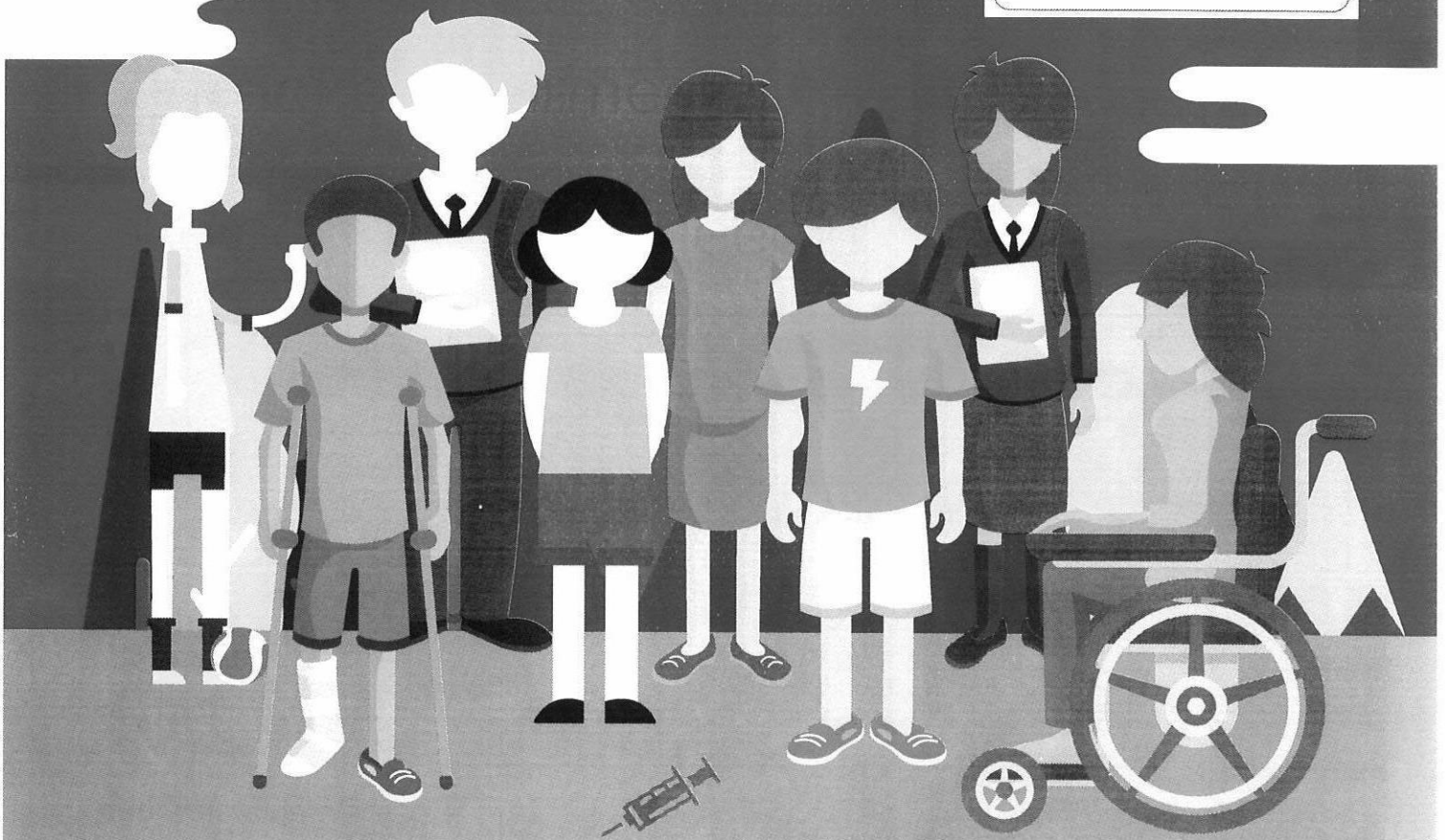
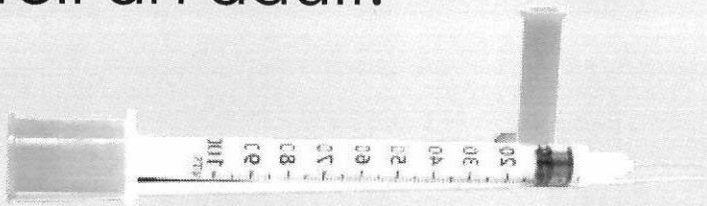
- Ensure children have been cleared from the area or are closely supervised.
- Never handle a needle by the sharp end, keep the point away from your body and hands at all times.
- Never try to recap a needle! That is the most common way to stick yourself.
- Place your container near the needles and ensure it cannot tip over.
- Very carefully place each needle in the container, point down, one at a time.
- Once all of the needles have been collected walk around the area to ensure you have collected them all.
- Tightly screw the lid on the container.
- A small number of needles can be disposed of in municipal trash provided the container is strong and the cover fits tightly. Loose needles are a danger to municipal workers!
- Wash your hands even if you used gloves.

What to do if you prick yourself with a dirty needle:

- Allow the wound to bleed freely for a few minutes.
- Wash with soap and water.
- Apply alcohol or other available disinfectant to the wound and dress it with a bandage.
- Contact the HealthLine at 811, go to your family doctor or visit a local emergency room for further follow up.

What to do if you find a needle?

1. Do not be alarmed.
2. Do not touch the needle.
3. Tell an adult.



Eastern
Health



Central
Health



Western
Health



Labrador-Grenfell
Health

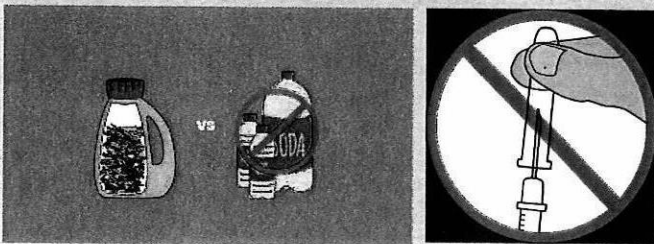
Avoiding Needle Stick Injuries

Avoid putting needles into plastic containers that you can see through (these are not puncture-proof)

Avoid putting needles into glass or aluminum containers (these can be broken/smashed)

Avoid over-filling the container/forcing needles inside

Do not try & recap the needle



Other Safety Considerations

DO NOT
throw loose
sharps in trash



DO NOT
put sharps
in recycling



DO NOT
flush sharps
down toilet



KEEP OUT
of reach
of children



For a delivery anywhere in Corner Brook:

- Phone: (709) 634-7927 (SWAP)
- Text: (709) 660-4800
- Email: jhackett@acnl.net

- Every Tuesday & Thursday
- 7:00-9:30 p.m.

Follow us on Facebook!
Safe Works Access Program/SWAP - Corner Brook

A Guide to the Safe Disposal of Sharps

Safe Works Access Program (SWAP) Disposal



Corner Brook & St. John's

- Contact us for the pick up of used sharps!
- Sharps must be contained. Let us know if you need a free sharps container delivered.
- Tuesday & Thursday evenings: 7-9:30 p.m.
- Call: (709) 634-7927 (Corner Brook), or (709) 757-7927 (St. John's)

Province-Wide

- Contact us to have sharps containers mailed to you free of charge anywhere within Newfoundland & Labrador.
- Bring filled containers to the nearest hospital/clinic/pharmacy that provides public sharps disposal services.

Household Disposal



1. Get a thick-walled plastic container with a tight-fitting, screw-top lid.
o Examples: Laundry detergent or bleach container

2. Place the needles point down into the container.
3. Close the container tightly after placing the needles inside. You can also use duct or packing tape to help seal the lid closed.
4. When the container is no more than two-thirds full, place it in with household garbage. Be sure to label the container with "Caution: Sharp Objects", or "Caution: Household Sharps".

SAFE WORKS ACCESS PROGRAM (SWAP)

FREE & Confidential Delivery Service

Our products:

- Syringes
- Alcohol swabs
- Sterile water
- Cooker cups
- Non-latex tourniquets
- Sharps containers + pickup service
- Glass pipes + equipment
- Naloxone kits
- Condoms + lubricant

