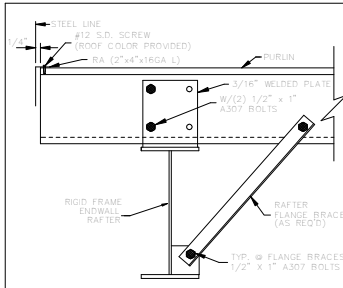


○ Dia= 1/2"
 ⊗ Dia= 3/4"

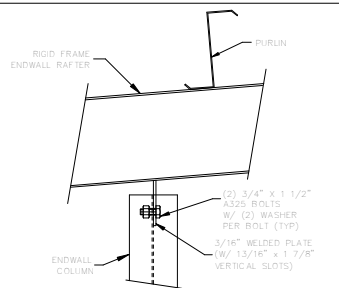
ANCHOR BOLT PLAN
 NOTE: All Base Plates @ 100'-0" (U.N.)



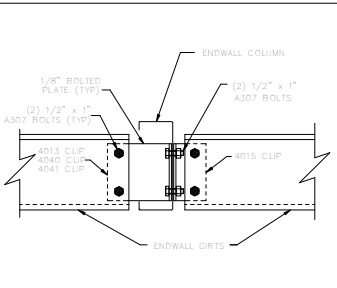
CUSTOMER:	TBD	3200 E. CAMELBACK RD SUITE100 PHOENIX/AZ/85018
PROJECT:	RF : PETER BATSCHELET	1508 MERZVILLE RD. FOREST LAKES/AZ/85931
REVISIONS:		
DWN:		JDR NO.
CHK:		SL0023ALT
DATE:	5/ 3/24	DWG. NO.
SCALE:	= NONE	



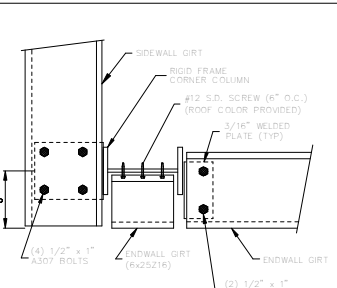
A10 PURLIN TO RIGID FRAME
ENDWALL RAFTER



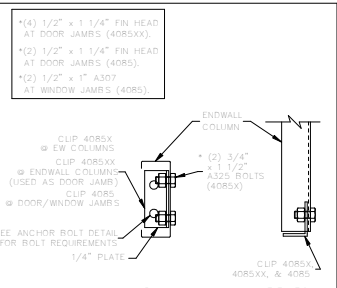
S19 ENDWALL COLUMN TO
RIGID FRAME RAFTER



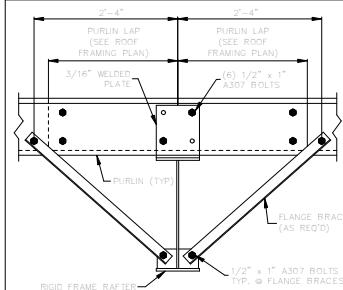
C1 ENDWALL GIRT TO ENDWALL COLUMN



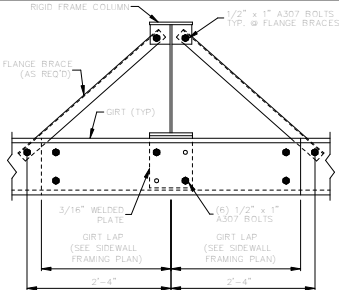
D15 CORNER COLUMN GIRT CONNECTION



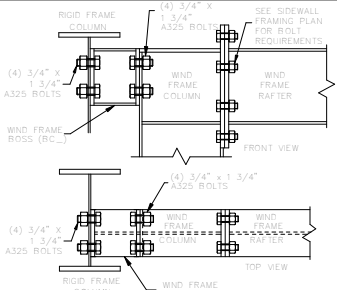
E6 ENDWALL COLUMN/JAMB
BASE CONNECTION



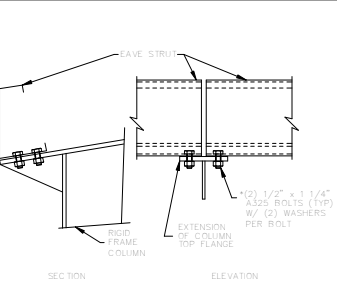
G2 PURLIN TO INTERIOR FRAME RAFTER
WITH PURLIN LAP



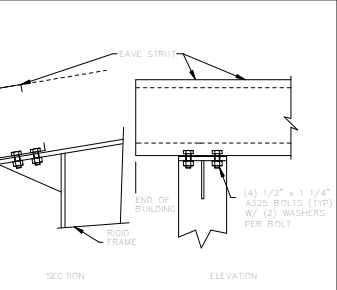
H2 GIRT TO INTERIOR FRAME COLUMN
WITH GIRT LAP



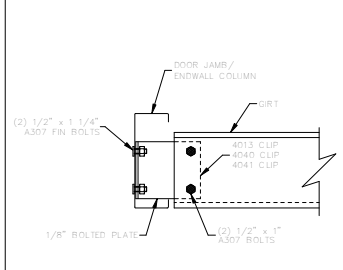
H10 WIND FRAME COLUMN TO
RIGID FRAME COLUMN



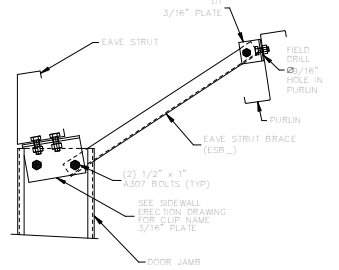
J2 EAVE STRUT TO RIGID FRAME COLUMN



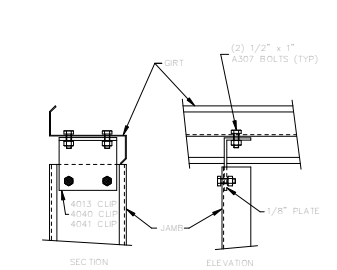
J24 EAVE STRUT TO RIGID FRAME COLUMN



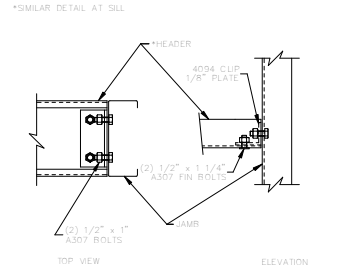
K2 GIRT TO JAMB/ENDWALL COLUMN



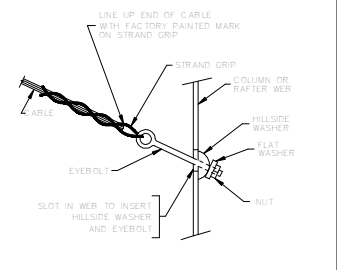
L1 DOOR JAMB TO EAVE STRUT



L6 JAMB TO GIRT



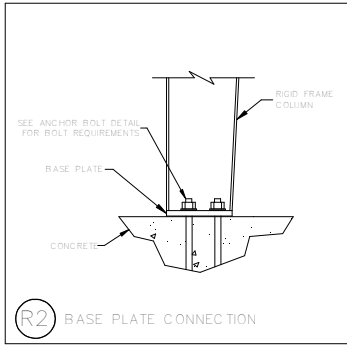
M1 HEADER TO JAMB



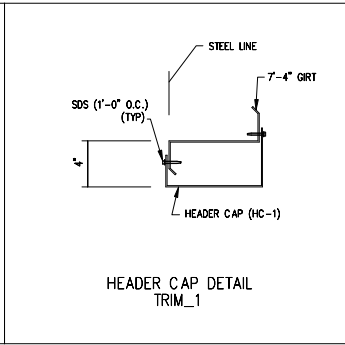
Q2 DIAGONAL CABLE W/EYEBOLT END

CUSTOMER:	TBD	3200 E. CAMELBACK RD SUITE100 PHOENIX/AZ/85018
PROJECT:	RF : PETER BATSCHELET	1508 MERZVILLE RD. FOREST LAKES/AZ/85931
REVISIONS:		
DWN:		JWB NJL
CHK:		SL002 3ALT
DATE:	5/ 3/24	DWG. NO.
SCALE:	= NONE	

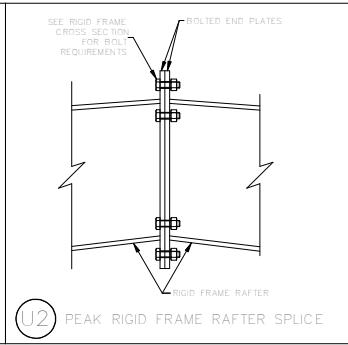




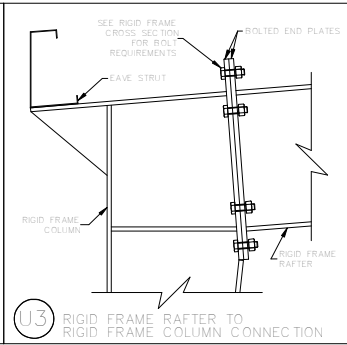
R2 BASE PLATE CONNECTION



HEADER CAP DETAIL TRIM_1



U2 PEAK RIGID FRAME RAFTER SPLICE

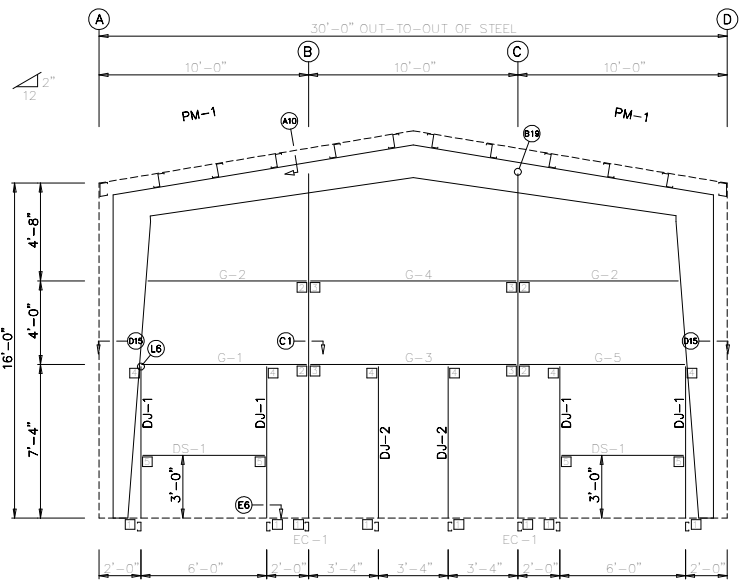


U3 RIGID FRAME RAFTER TO RIGID FRAME COLUMN CONNECTION

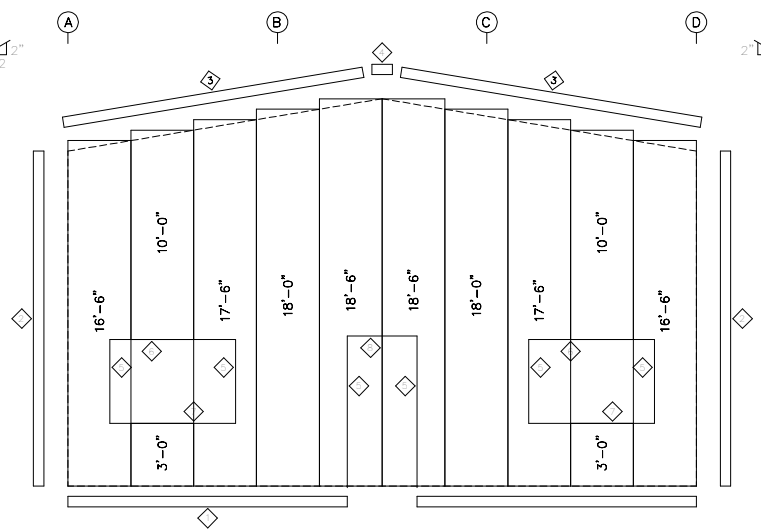
CUSTOMER:	TBD	3200 E. CAMELBACK RD SUITE100 PHOENIX/AZ/85018
PROJECT:	RF : PETER BATSCHELET	1508 MERZVILLE RD. FOREST LAKES/AZ/85931
REVISIONS:	DWN:	JOB NO.
	CHK:	SL002
	DATE: 5/ 3/24	DWG. NO.
	SCALE = NONE	



3AL T



LEFT ENDWALL FRAMING: FRAME LINE 2



LEFT ENDWALL SHEETING & TRIM: FRAME LINE 2
 PANELS: 26 Ga. PBR - STANDARD COLOR

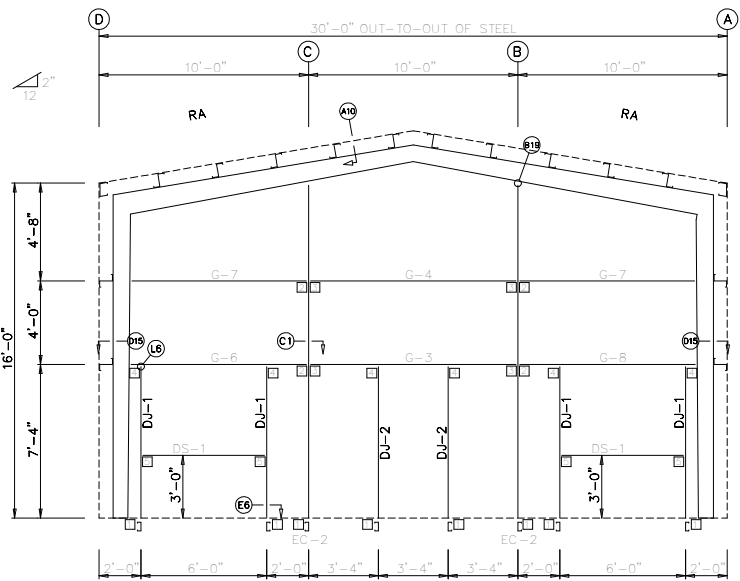
TRIM TABLE			
FRAME LINE 2			
MARK	PART	LENGTH	DETAIL
8-10004-4-10-1	FL-73A	20'-2"	TRIM_1
	FL-833	16'-0"	
	FL-19A	20'-2"	
	FL-16B	1'-4"	
	FL-22	9'-3"	
	FL-851	9'-1"	
	FL-25	9'-1"	
FL-850	3'-6"	TRIM_1	

MEMBER TABLE			
FRAME LINE 2			
MARK	PART	LENGTH	
EC-1	8x25C14	15'-5 5/16"	
DJ-1	8x25C14	7'-0 1/4"	
DJ-2	8x25C14	7'-0 1/4"	
DS-1	8x25C14	6'-0"	
G-1	8x25Z16	7'-9 3/4"	
G-2	8x25Z16	7'-6 1/8"	
G-3	8x25Z16	9'-11 1/2"	
G-4	8x25Z16	9'-11 1/2"	
G-5	8x25Z16	7'-9 3/4"	

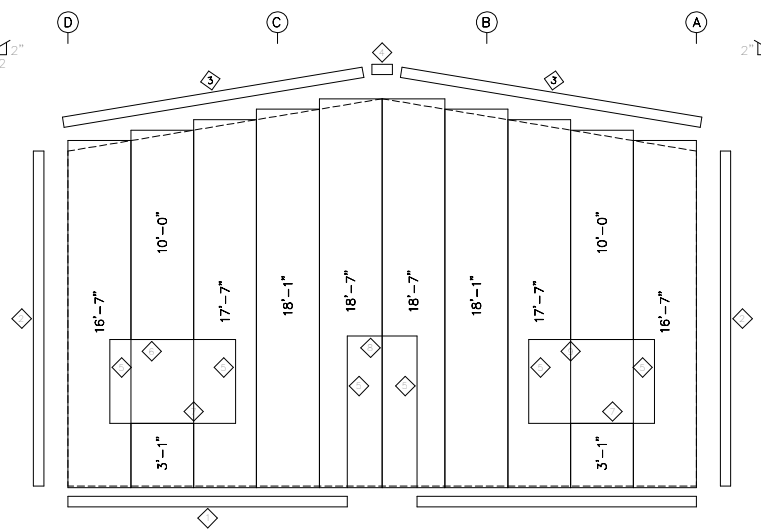
CONNECTION PLATES	
FRAME LINE 2	
MARK	PART
1	4085
2	4013
3	4015
4	J1
5	4094



CUSTOMER: TBD		3200 E. CAMELBACK RD SUITE100 PHOENIX/AZ/85018	
PROJECT: RF : PETER BATSCHELET		1508 MERZVILLE RD. FOREST LAKES/AZ/85931	
REVISIONS	DWN:	JDB	NO.
	CHK:		SL0023AL T
	DATE: 5/ 3/24		DWG. NO.
	SCALE = NONE		



RIGHT ENDWALL FRAMING: FRAME LINE 4



RIGHT ENDWALL SHEETING & TRIM: FRAME LINE 4
 PANELS: 26 Ga. PBR - STANDARD COLOR

TRIM TABLE			
FRAME LINE 4			
MARK	PART	LENGTH	DETAIL
108-110-10-14-11-1	FL-73A	20'-2"	TRIM_1
	FL-833	16'-0"	
	FL-16D	20'-2"	
	FL-16B	1'-4"	
	FL-22	9'-3"	
	FL-851	9'-1"	
	FL-25	9'-1"	
	FL-850	3'-6"	
FL-851	9'-1"	TRIM_1	

MEMBER TABLE		
FRAME LINE 4		
MARK	PART	LENGTH
EC-2	8x35c14	16'-0 1/8"
DJ-1	8x25C14	7'-0 1/4"
DJ-2	8x25C14	7'-0 1/4"
DS-1	8x25C14	6'-0"
G-3	8x25Z16	9'-11 1/2"
G-4	8x25Z16	9'-11 1/2"
G-6	8x25Z16	8'-2 5/8"
G-7	8x25Z16	8'-2 5/16"
G-8	8x25Z16	8'-2 5/8"

CONNECTION PLATES	
FRAME LINE 4	
MARK/PART	
1	4085
2	4041
3	4015
4	J1
5	4094

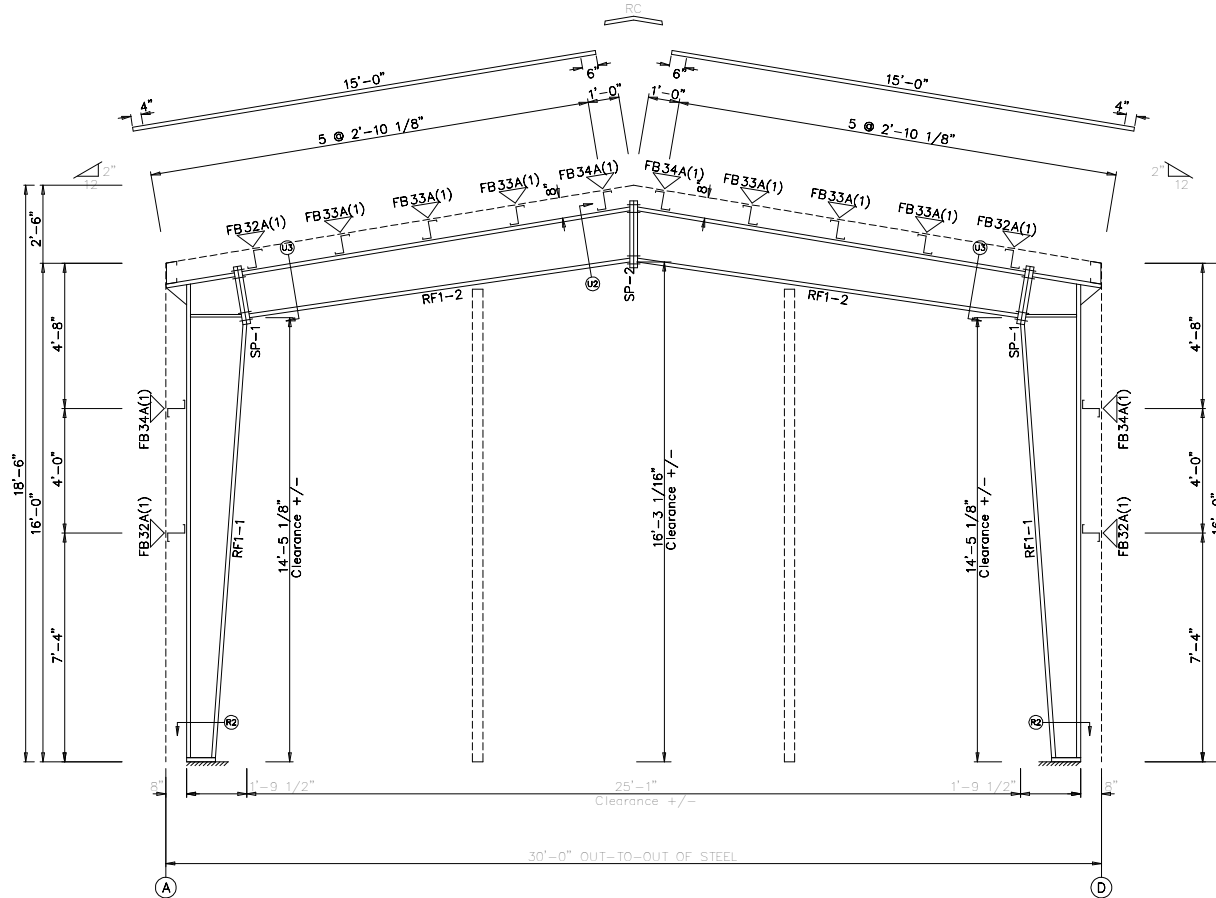


CUSTOMER:	TBD 3200 E. CAMELBACK RD SUITE100 PHOENIX/AZ/85018
PROJECT:	RF : PETER BATSCHELET 1508 MERZVILLE RD. FOREST LAKES/AZ/85931
REVISIONS	DWN: JDB NI CHK: SL0023ALT DATE: 5/ 3/24 SCALE = NONE

SPLICE PLATE & BOLT TABLE										
Mark	Qty	Top	Bot	Int	Type	Dia	Length	Width	Thick	Length
SP-1	4	4	0	A325	0.750	2.25	6"	1/2"	1'-9 1/2"	
SP-2	4	4	0	A325	0.750	2.25	6"	1/2"	2'-0 3/4"	

MEMBER TABLE					
Mark	Web Depth	Web Plate	Outside Flange	Inside Flange	
	Start/End	Thick	W x Thk x Length	W x Thk x Length	
RF1-1	8.0/19.0	0.135	144.0	5 x 1/4" x 184.6	5 x 1/4" x 170.1
	19.0/20.7	0.135	21.6	5 x 1/4" x 26.6	
	20.7/21.0	0.188	22.0		
RF1-2	15.0/17.8	0.135	142.4	5 x 1/4" x 154.4	5 x 1/4" x 151.4
	17.8/18.0	0.135	12.0		

▽ FLANGE BRACES: Both Sides(U.N.)
 FBxxA(1); xx=length(in)
 A - L15X1/8



FRAME CROSS SECTION: FRAME LINE 2 3

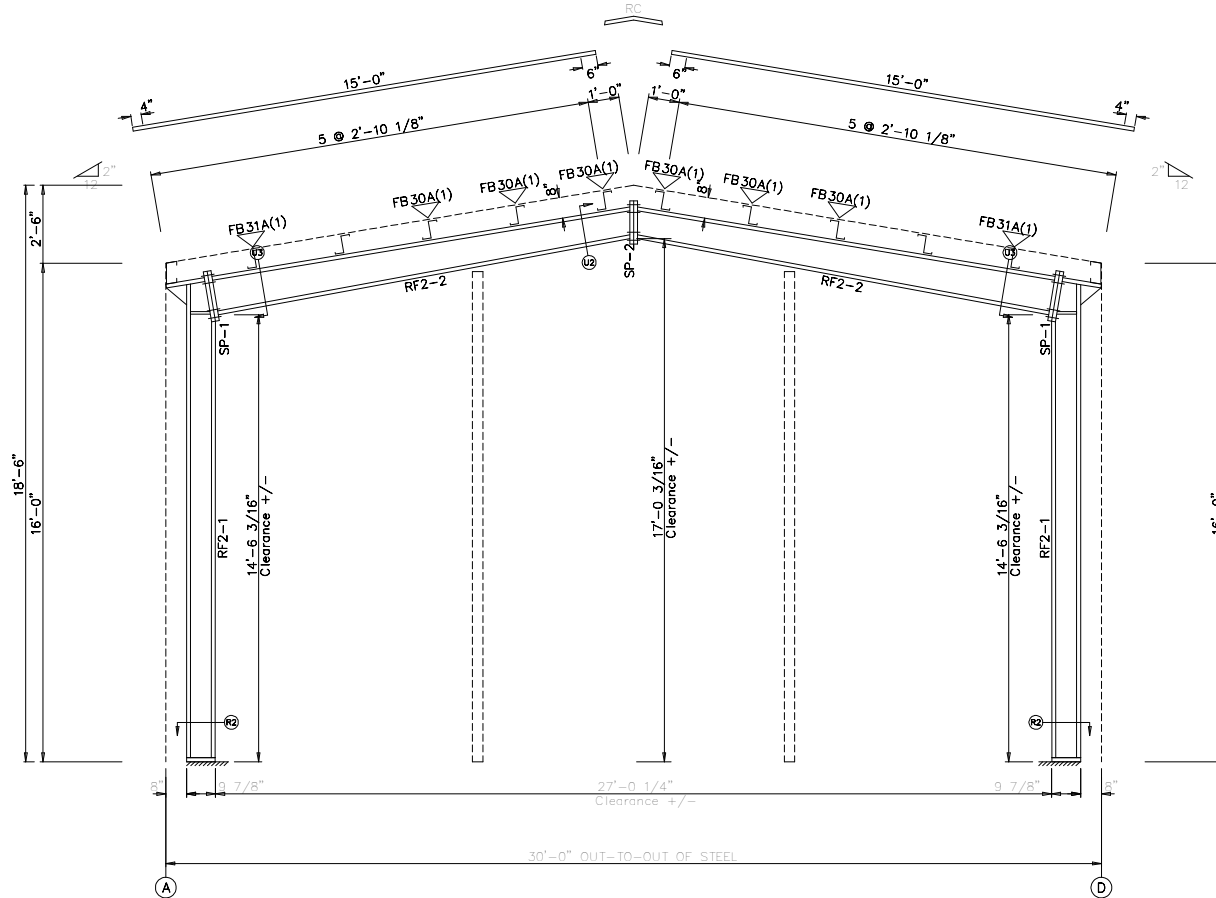


CUSTOMER:	TBD	3200 E. CAMELBACK RD SUITE100 PHOENIX/AZ/85018
PROJECT:	RF : PETER BATSCHELET	1508 MERZVILLE RD. FOREST LAKES/AZ/85931
REVISIONS:	DWN:	JOB NO.
	CHK:	SL0023ALT
	DATE: 5/ 3/24	DWG. NO.
	SCALE = NONE	

SPLICE PLATE & BOLT TABLE										
Mark	Qty	Loc	Bot	Int	Type	Dia	Length	Width	Thick	Length
SP-1	4	4	0	A325	0.750	2.50	6"	5/8"	1'-6 1/2"	
SP-2	4	4	0	A325	0.750	2.25	6"	1/2"	1'-3 5/8"	

MEMBER TABLE						
Mark	Web Depth		Web Plate		Outside Flange W x Thk x Length	Inside Flange W x Thk x Length
	Start	End	Thick	Length		
RF2-1	8.0	8.8	0.135	144.0	6 x 1/4" x 184.6	6 x 1/4" x 48.0
	8.6	9.0	0.135	22.7	6 x 1/4" x 14.9	6 x 5/8" x 122.7
	9.0	9.0	0.1313	19.1		
RF2-2	12.0	9.4	0.135	144.0	5 x 1/4" x 165.8	5 x 1/4" x 164.3
	9.4	9.0	0.135	21.8		

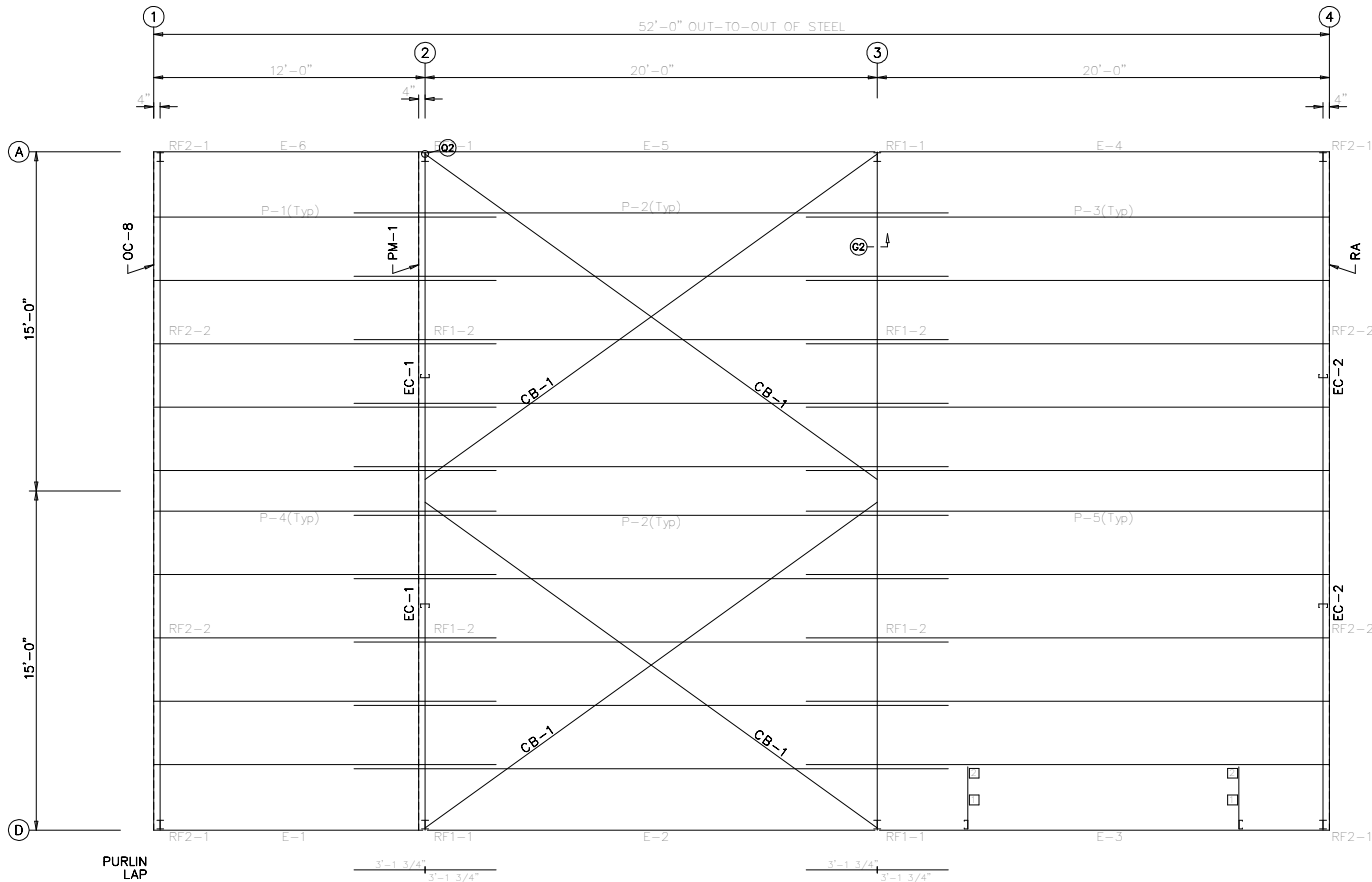
▽ FLANGE BRACES: Both Sides(U.N.)
 FBxxA(1); xxx=length(in)
 A - L15X1/8



FRAME CROSS SECTION: FRAME LINE 1 4



CUSTOMER: TBD		3200 E. CAMELBACK RD SUITE100 PHOENIX/AZ/85018	
PROJECT: RF : PETER BATSCHELET		1508 MERZVILLE RD. FOREST LAKES/AZ/85931	
REVISIONS	DWN:	JOB NO.	SL0023ALT
	CHK:	DWG. NO.	
	DATE: 5/ 3/24		
SCALE = NONE			

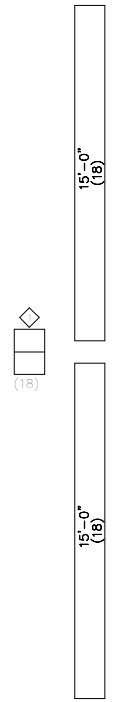


ROOF FRAMING PLAN

MEMBER TABLE		
ROOF PLAN		
MARK	PART	LENGTH
P-1	8x25Z16	15'-1 1/2"
P-2	8x25Z14	26'-3 1/2"
P-3	8x25Z12	23'-1 1/2"
P-4	8x25Z16	15'-1 1/2"
P-5	8x25Z12	23'-1 1/2"
E-1	850E142	11'-11 1/2"
E-2	850E122	19'-11 1/2"
E-3	850E122	19'-11 1/2"
E-4	850E122	19'-11 1/2"
E-5	850E122	19'-11 1/2"
E-6	850E142	11'-11 1/2"
CB-1	CRL375	22'-2"

TRIM TABLE		
ROOF PLAN		
MARK	PART	LENGTH
1	RIBCAP	3'-0"

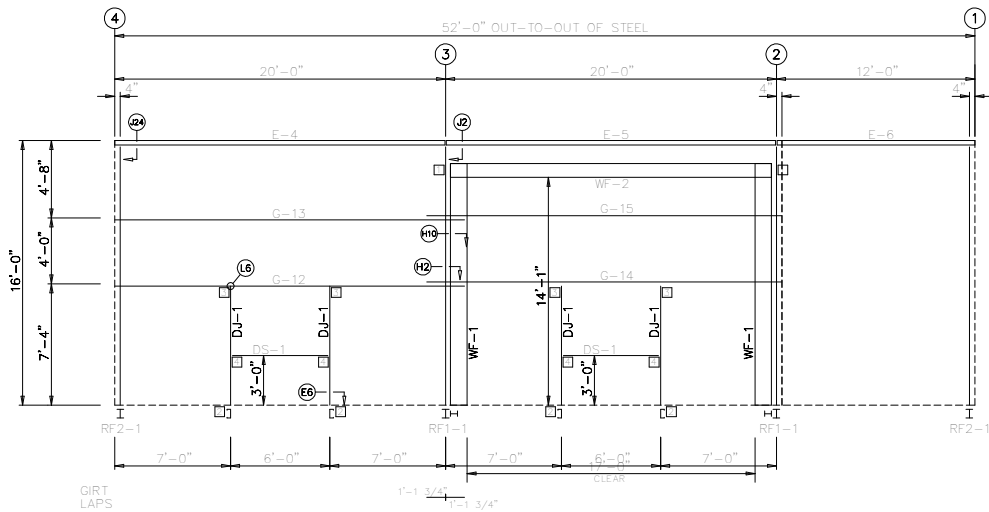
CONNECTION PLATES	
ROOF PLAN	
MARK/PART	DESCRIPTION
1	ESB
2	d1



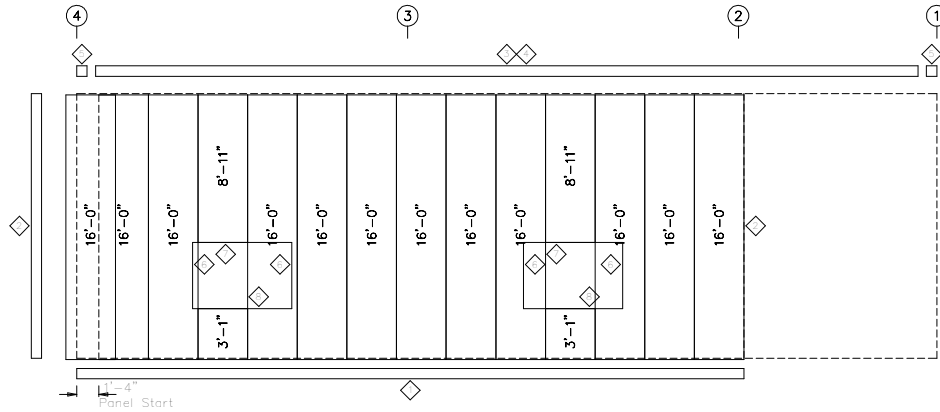
ROOF SHEETING
 PANELS: 26 Ga. PBR
 STANDARD COLOR



CUSTOMER:	TBD	3200 E. CAMELBACK RD SUITE100 PHOENIX/AZ/85018
PROJECT:	RF : PETER BATSCHELET	1508 MERZVILLE RD. FOREST LAKES/AZ/85931
REVISIONS:	DWN:	JDR NO.
	CHK:	SL0023ALT
	DATE: 5/ 3/24	DWG. NO.
	SCALE = NONE	



BACK SIDEWALL FRAMING: FRAME LINE A



BACK SIDEWALL SHEETING & TRIM: FRAME LINE A
PANELS: 26 Ga. PBR - STANDARD COLOR

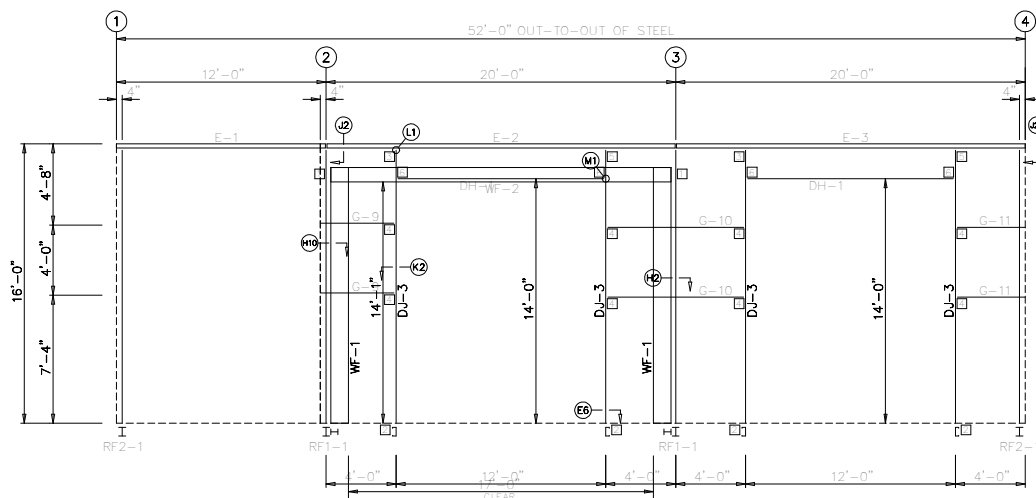
MEMBER TABLE		
FRAME LINE A		
MARK	PART	LENGTH
WF-1	W12542	14'-11"
WF-2	W10542	16'-11 1/2"
DJ-1	8x25C14	7'-0 1/4 1/2"
DS-1	8x25C14	6'-0"
E-4	850E122	19'-11 1/2"
E-5	850E122	19'-11 1/2"
E-6	850E142	11'-11 1/2"
G-12	8x25Z16	21'-1 1/2"
G-13	8x25Z16	21'-1 1/2"
G-14	8x25Z16	21'-5 1/2"
G-15	8x25Z16	21'-5 1/2"

TRIM TABLE		
FRAME LINE A		
MARK	PART	LENGTH
1	FL-73A	20'-2"
2	FL-833	16'-0"
4	FL-19A	20'-2"
5	FC-820	20'-2"
5	FL-16A	4"
5	FL-22	7'-3"
5	FL-851	7'-1"
5	FL-25	7'-1"

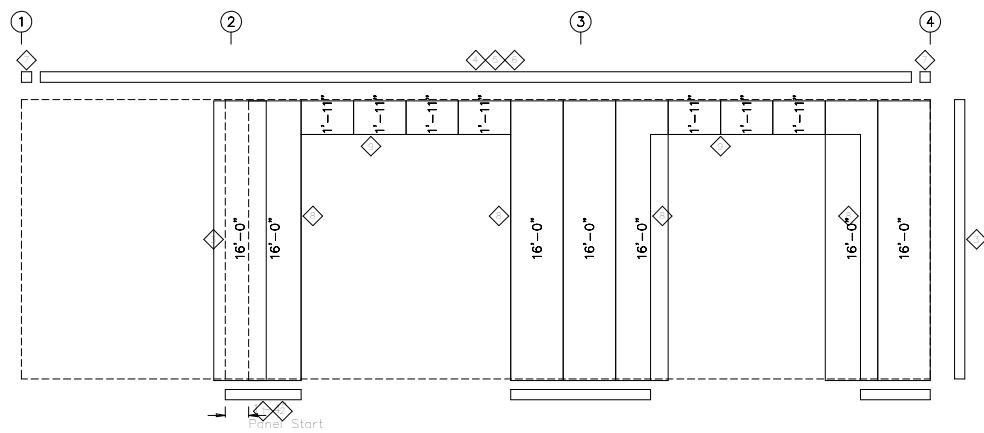
CONNECTION PLATES	
FRAME LINE A	
MARK	PART
1	WB-1
2	4085
3	J1
4	4094

CUSTOMER:	TBD	3200 E. CAMELBACK RD SUITE100 PHOENIX/AZ/85018
PROJECT:	RF : PETER BATSCHELET	1508 MERZVILLE RD. FOREST LAKES/AZ/85931
REVISIONS:	DWN:	JDR NO.
	CHK:	SL0023ALT
	DATE: 5/ 3/24	DWG. NO.
	SCALE = NONE	





FRONT SIDEWALL FRAMING: FRAME LINE D



FRONT SIDEWALL SHEETING & TRIM: FRAME LINE D
PANELS: 26 Ga. PBR - STANDARD COLOR

MEMBER TABLE		
FRAME LINE D		
MARK	PART	LENGTH
WF-1	W12542	14'-11"
WF-2	W10542	16'-11 1/2"
DJ-3	8x25C14	15'-3 5/8"
DH-1	8x25C14	12'-0"
E-1	850E142	11'-11 1/2"
E-2	850E122	19'-11 1/2"
E-3	850E122	19'-11 1/2"
G-9	8x25Z16	4'-1"
G-10	8x25Z16	7'-6 1/2"
G-11	8x25Z16	3'-9"

TRIM TABLE		
FRAME LINE D		
MARK	PART	LENGTH
FL-73A	SCRAP	
FL-73		10'-2"
FL-833		16'-0"
FC-820		20'-2"
FL-19		10'-2"
FL-19A		20'-2"
FL-16A		4"
FL-23C		14'-2"
FL-853		12'-4"

CONNECTION PLATES	
FRAME LINE D	
MARK	PART
1	WB-1
2	4085
3	61
4	4013
5	62
6	4084

CUSTOMER:	TBD	3200 E. CAMELBACK RD SUITE100 PHOENIX/AZ/85018
PROJECT:	RF : PETER BATSCHELET	1508 MERZVILLE RD. FOREST LAKES/AZ/85931
REVISIONS:	DWN:	JDR NO.
	CHK:	SL0023ALT
	DATE: 5/ 3/24	DWG. NO.
	SCALE = NONE	

