



AUGUST 2025



Coconino County

COMMUNITY WILDFIRE PROTECTION PLAN FOR
RURAL FIRE DISTRICTS
AND TRIBAL COMMUNITIES IN COCONINO COUNTY



Public Meeting



WELCOME AND INTRODUCTIONS

GFFP

- Anne Mottek, Greater Flagstaff Forests Partnership, GFFP Director, CWPP Project Administrator

Coconino County

- Jay Smith, Coconino County Forest Restoration Director
- Joe Hinz, Coconino County Forest Restoration Manager

SWCA

- Hired Consultant

Fire Department/ District

- Chief/Staff Introduction



AGENDA



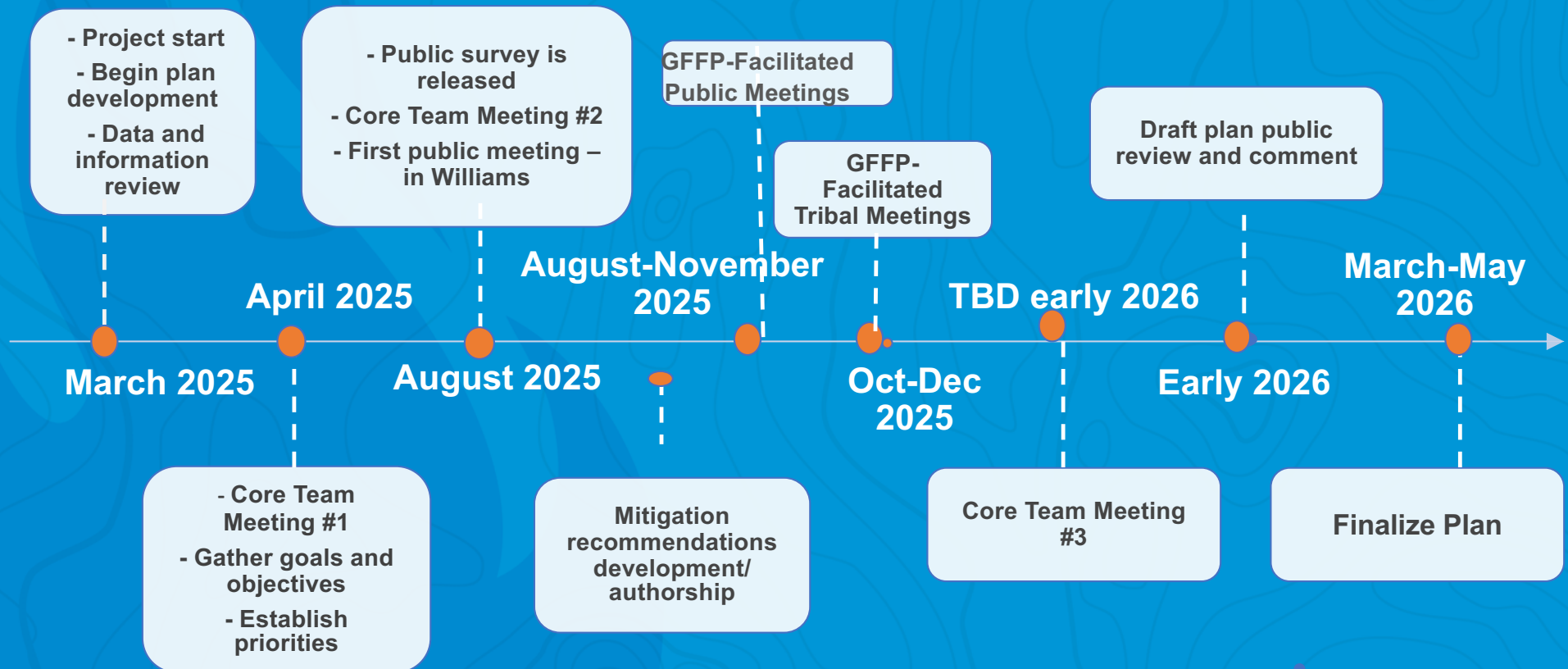
Project Timeline

CWPP Overview & Framework

Next Steps

Collaborative and Interactive Session

CWPP Timeline



GFFP HOSTED PUBLIC MEETINGS

Community Meeting Schedule			
FD	Date	Time	Venue
Williams, HCF&R, Sherwood Forest	8/27/2025	6:30-8:30 PM	Grand Canyon Railway Hotel (Santa Fe Room)
Blue Ridge FD	9/9/2025	1:00-3:00 PM	Blue Ridge Fire District - Station 1
Forest Lakes FD	9/10/2025	1:00-3:00 PM	Forest Lakes Fire District
Kaibab Estates West Fire Dept.	9/23/2025	5:00-7:00 PM	Kaibab Estates West FD Fire Station
Tusayan FD	10/1/2025	4:30-6:30 PM	Holiday Inn Resort the Squire at Grand Canyon (Navajo Room)



WHAT IS A CWPP? WHAT IS IT NOT?

- A CWPP:
 - Identifies risks from wildfire
 - Makes recommendations to reduce wildfire risk
 - Is community driven and collaborative
 - Supports provision of grant funding to implement projects
- A CWPP does **NOT mandate** actions, it *recommends* actions for stakeholders and communities to take to mitigate wildfire risk and build wildfire resilience.



GUIDELINES

- Developed collaboratively with key federal, state, tribal and local partners
- Assess wildfire risk and prioritize projects to address this risk
- Identify ways to reduce structural ignitability and protect values and assets
- Develop strategies to improve education and outreach to build capacity and preparedness
- Build actions to increase capacity for fire responders
- Develop mitigation actions for post-fire recovery
- Good CWPPs are **understandable, relevant, and actionable.**

THREE GOALS FOR WILDFIRE RESILIENCE



Resilient
Landscapes



Safe and
Effective
Wildfire
Response

Fire Adapted
Communities



**FIRE ADAPTED
COMMUNITIES**
LEARNING NETWORK

PROTECT WHAT MATTERS

- Family and Home
- Neighborhood
- Business and Infrastructure
- Parks and Public Land



RESILIENT LANDSCAPES

- Hazardous fuels + vegetation treatments (thinning trees, prescribed fire)
- Ecosystem and Forest health
- Restoration

RESILIENT LANDSCAPES



Landscapes are resilient to fire, insect, and disease disturbances, regardless of jurisdictional boundaries.

FIRE ADAPTED COMMUNITIES

- Public education and outreach
- Community values at risk
- Home hardening
- Defensible space
- Preparedness



SAFE, EFFECTIVE WILDFIRE RESPONSE

- Fire response resources
- Evacuation
- Increase home and, infrastructure defensibility

SAFE, EFFECTIVE WILDFIRE RESPONSE



All jurisdictions coordinate to implement safe, effective, risk-based management decisions.

COMMUNITY SURVEY



CALL TO ACTION!
PLEASE PARTICIPATE
IN THE PUBLIC
SURVEY!

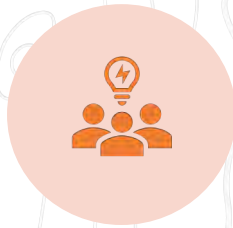


SCAN QR CODE
FILL OUT PAPER COPY
TODAY

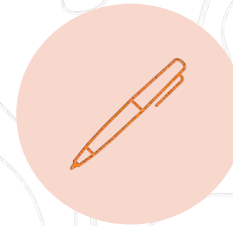




NEXT STEPS



**PUBLIC
ENGAGEMENT**

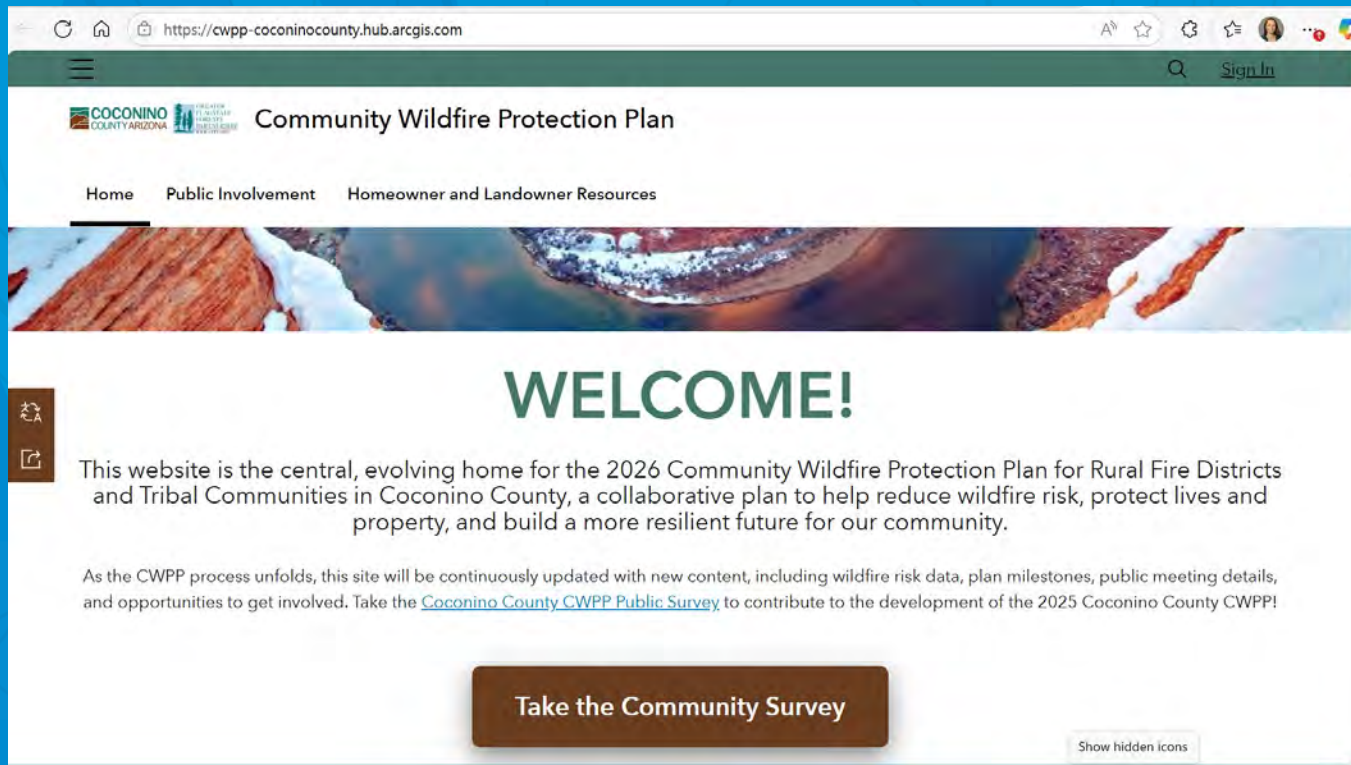


DRAFT PLAN



**COMMENT
PERIOD**

<https://cwpp-coconinocounty.hub.arcgis.com/>



HUB SITE



INTERACTIVE SESSION

CONCERNS AND PRIORITIES



**Community you
represent**



**Concerns in your
community**



**Your project
priorities**



THANK YOU!

Consultant Team:

Annie Lutes- PM
alutes@swca.com

Vicky Amato- SME
vamato@swca.com

Molly Chamberlain- APM
molly.chamberlain@swca.com

Oversight Team:

Anne Mottek
mottekconsulting@gmail.com

Jay Smith
jaysmith@coconino.az.gov

Joe Hinz
jhinz@coconino.az.gov

