

MAY 2026

# A COMMUNITY WILDFIRE PROTECTION PLAN

for Rural Fire Districts and  
Tribal Communities in  
Coconino County



## Community Wildfire Protection Plan (CWPP)

The objective of the CWPP is:

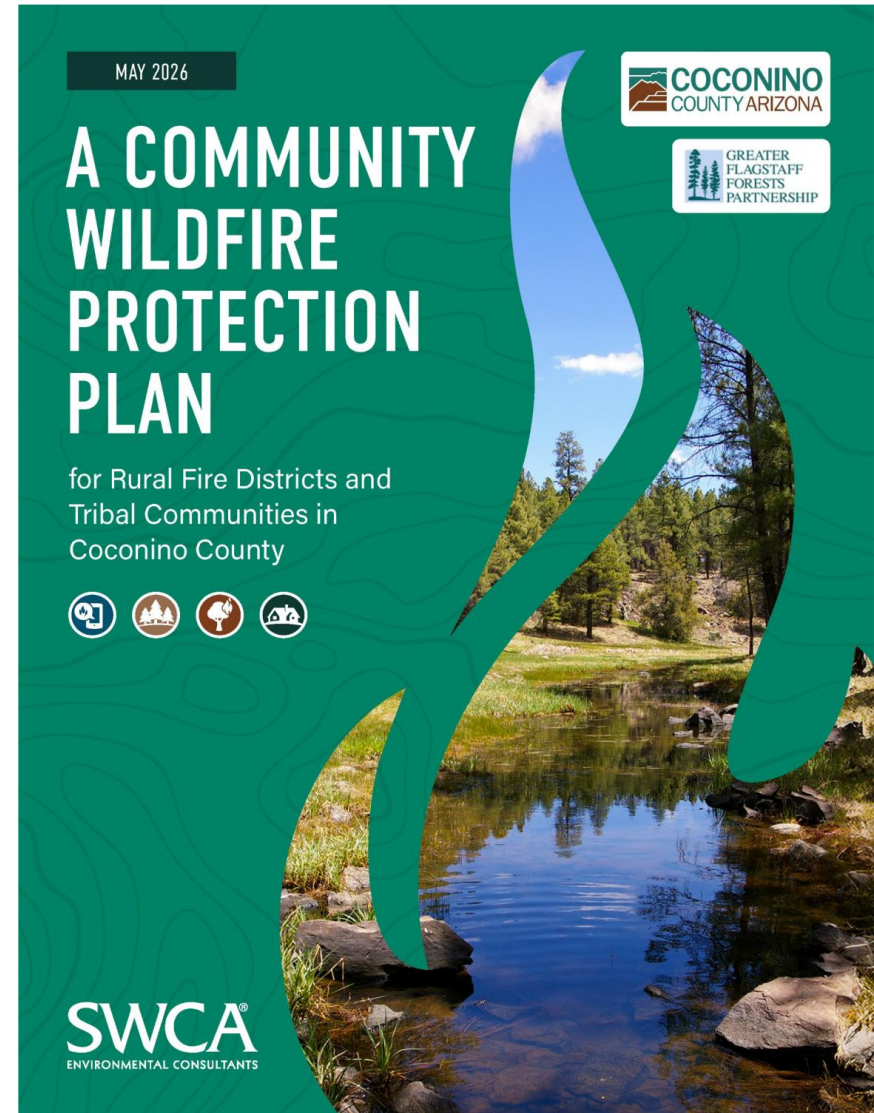
- to understand the community's current wildfire risks
- to develop mitigation plans
- to generate the hardware list to achieve the plans
- to understand funding sources to achieve the plans

# Community Wildfire Protection Plan (CWPP) Report Structure

The document is a total of 393 pages

## The Plan Organization (Table of Contents):

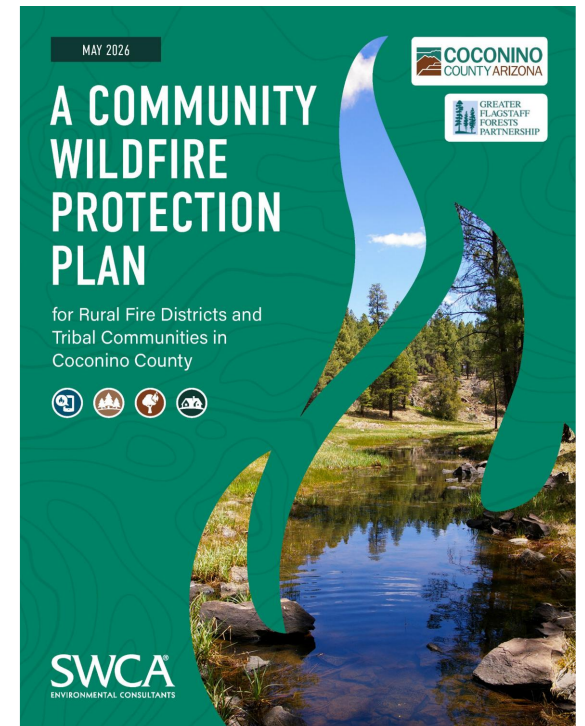
- Executive Summary
- Introduction
- Fire Environment
- Wildfire Risk and Post-Fire Hazards
- Mitigation Strategies
- Monitoring and Evaluation
- Appendices



# Community Wildfire Protection Plan (CWPP) Report Structure

## The Appendices (260 of the 393 pages):

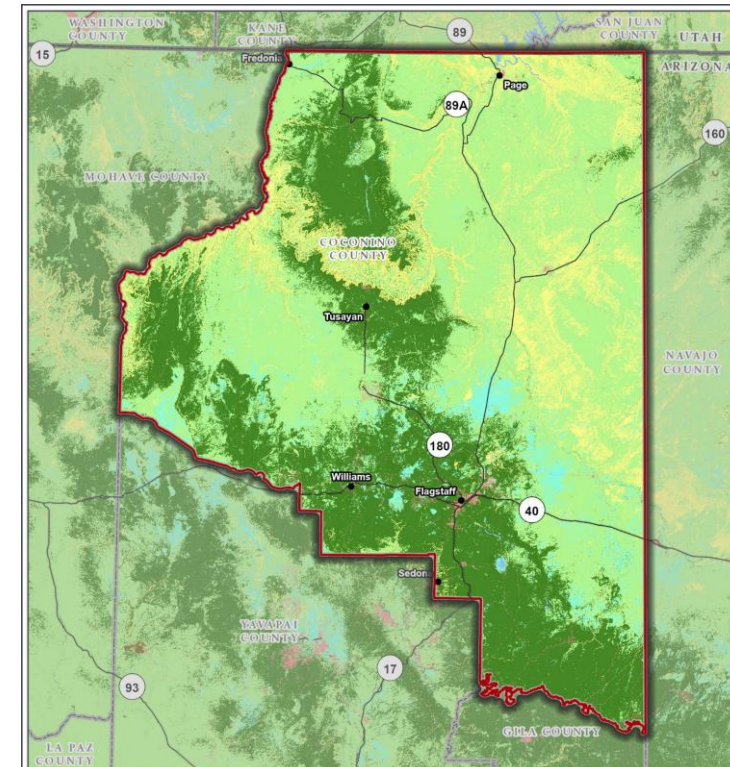
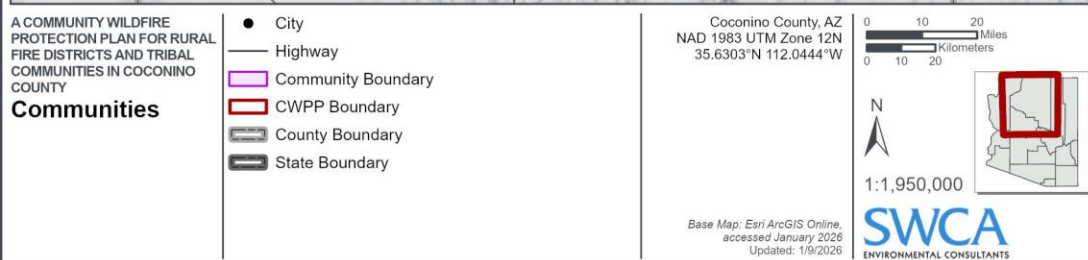
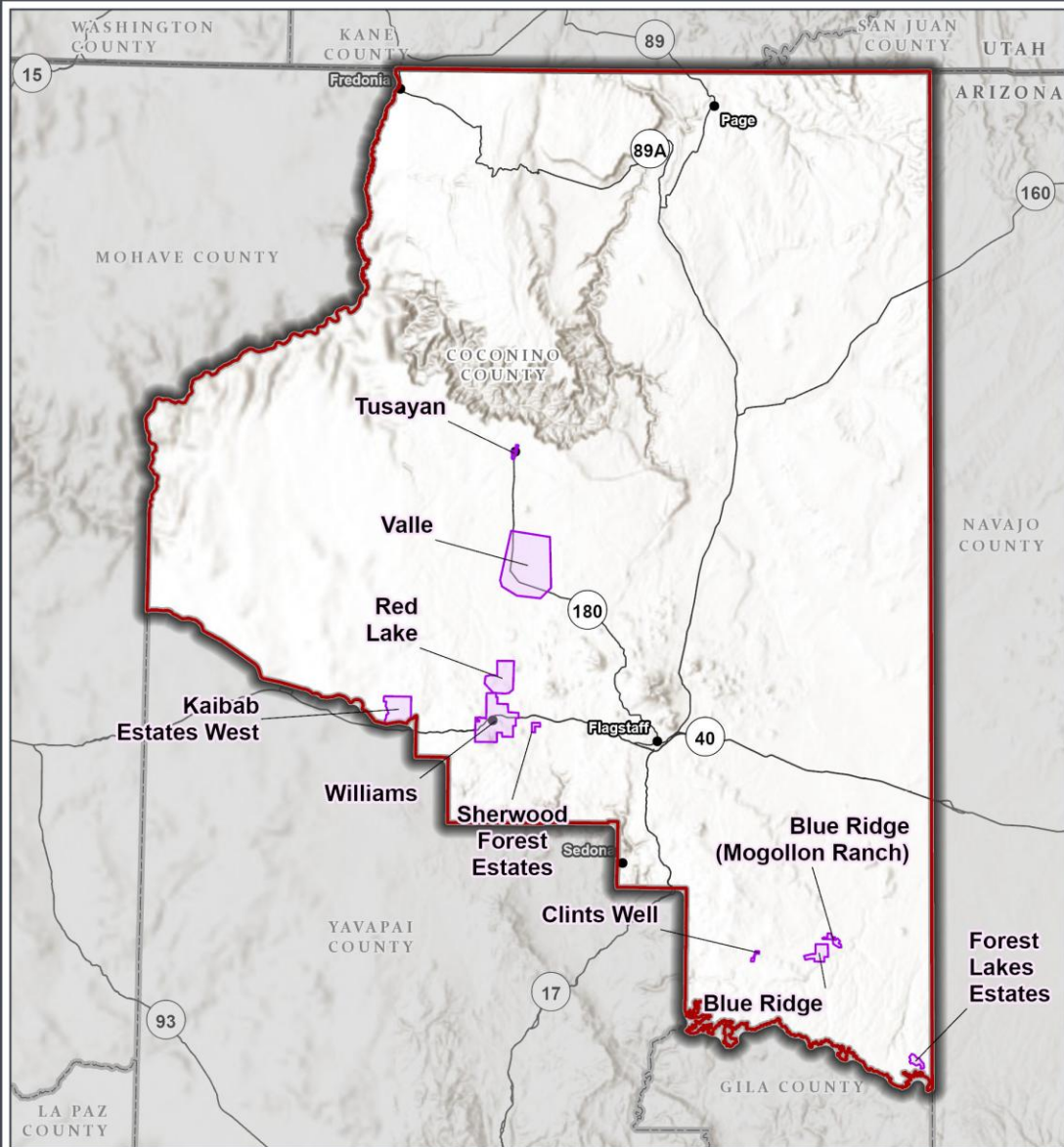
- Community Background
- Planning and Policy Background
- Community Hazards Summaries and Recommendations
- Homeowner Education, Actions, and Resources
- Fuel Treatment Types and Methods
- Community Engagement
- Additional Mapping
- Funding Sources
- Community Evacuation Plans



# Community Wildfire Protection Plan (CWPP)

This plan includes the communities of:

- Forest Lakes
- Blue Ridge
- Clint Wells
- Sherwood Forest
- Williams
- Red Lake
- Valle
- Tusayan
- Kaibab Estates



# Approach for this Meeting

## First, Understand the CWPP Process Used

- Community Wildfire Assessment Conducted
- Requested Concerns / Desires from Residents

## Today's Objective

- Review the Wildfire Assessment
- Review the Forest Lakes Community Data
- Review the Concerns / Desires
- Ensure All the Forest Lakes Data is Correct and Consistent
- Ensure the Forest Lakes HW Requests Support Assessment Risks



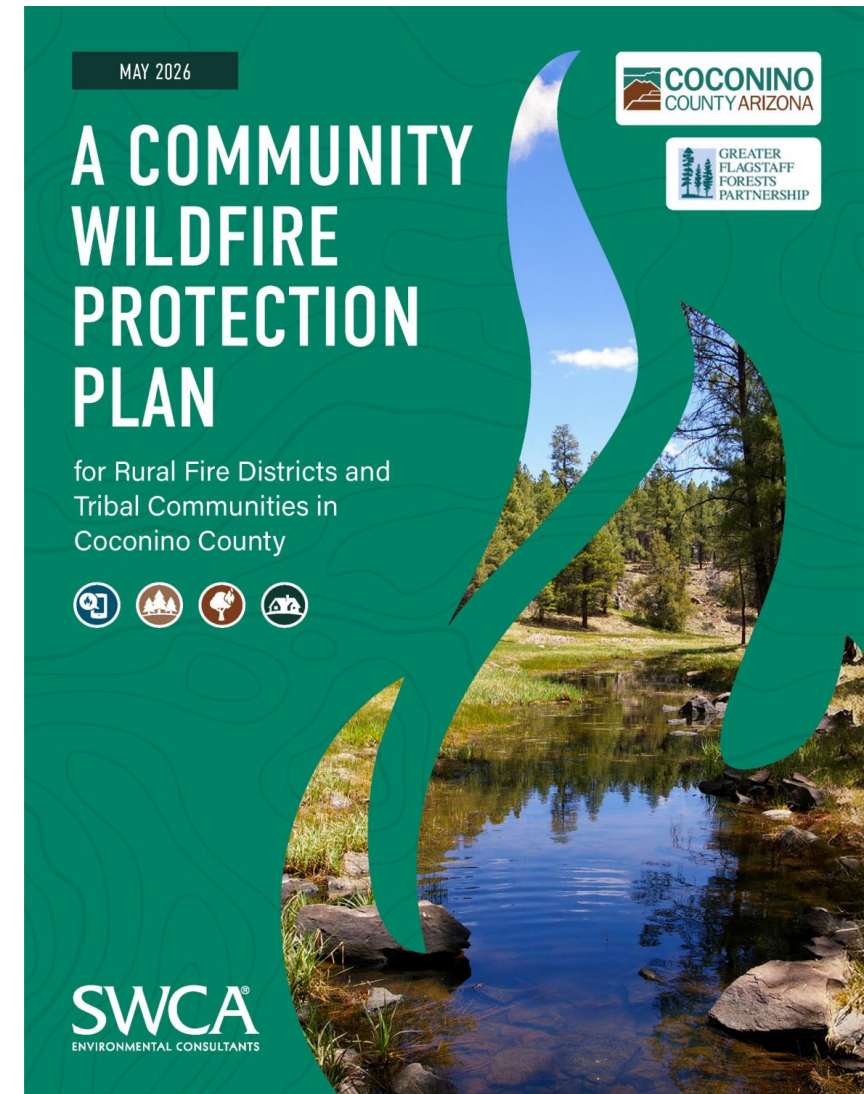
# Do We Ignore the Rest of the Report? Definitely NOT

## Firewise Has an Educational Component

- The Report will be Covered in Future Meetings
  - 3<sup>rd</sup> Saturday May – September
  - following FLOA Meeting

## What will be Covered

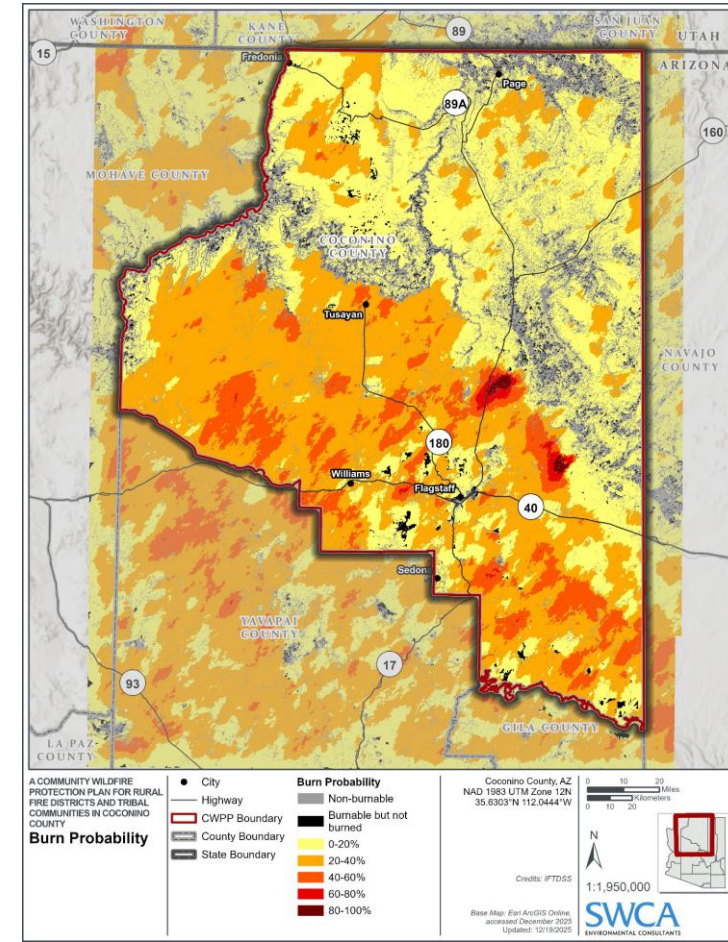
- Fire Environment
- Wildfire Risk and Post-Fire Hazards
- Mitigation Strategies
- Monitoring and Evaluation
- Application to Forest Lakes



# Overall Community Wildfire Risk ratings in Coconino County Community

## Community Wildfire Hazard Rating (Lowest Possible is 25%)

Williams	57% Moderate
Forest Lakes Estates	58% Moderate
Sherwood Forest Estates	58% Moderate
Tusayan	67% High
Valle	72% High
Red Lake	73% High
Blue Ridge	75% High
Clints Well	79% High
Kaibab Estates West	79% High



<b>Attribute</b>	<b>Scale*</b>	<b>Attribute</b>	<b>Scale*</b>
<b>Means of Access</b>		<b>Street Signs</b>	
<b><i>Ingress and Egress</i></b>		Present – reflective	1
2 or more roads in and out	1	Present – non-reflective	
1 road in and out		Not present	
<b><i>Road Width</i></b>		<b>Vegetation (Fuel Models)</b>	
>24 feet		<b><i>Predominant Vegetation</i></b>	
>20 feet <24 feet	1	Non-Burnable (NB)	
<20 feet		Grass (GR)	
<b><i>Road Conditions</i></b>		Grass-Shrub (GS)	
Surfaced road, grade <5%	0	Shrub (SH)	
Surfaced road, grade >5%		Timber-Understory (TU)	0.9
Non-surfaced road, grade <5%	0.75	Timber-Litter (TL)	0.1
Non-surfaced road, grade >5%	0.25	Slash-Blow (SB)	
Other than all season			
<b><i>Fire Access</i></b>			
<300 feet with turnaround			
>300 feet with turnaround	0.75		
<300 feet with no turnaround	0.25		
>300 feet with no turnaround			

For Numbers between 0 and 1 (including decimals), values are expressed as proportions. For example, 0.25 = 25%. For numbers greater than 1, a scale of 1 – 4 indicates risk potential. For example, a rating of 3 for topographic features indicates challenging topography such as steep ridges and canyons.

<b>Attribute</b>	<b>Scale*</b>	<b>Attribute</b>	<b>Scale*</b>
<b><i>Defensible Space</i></b>		<b>Roofing Assembly</b>	
>100 feet around structure		<b><i>Roofing</i></b>	
>70 feet <100 feet around structure	0.25	Class A - metal/clay/slate/asphalt	0.75
>30 feet <70 feet around structure	0.75	Class B - treated composite	0.25
<30 feet around structure		Class C - untreated/plywood/etc.	
		Unrated - poor condition	
<b>Topography Within 300 feet of Structures</b>		<b>Notes:</b>	
<b><i>Slope</i></b>		<b>Building Construction</b>	
<9%	0.75	<b><i>Siding Materials (predominant)</i></b>	
10% to 20%	0.25	Noncombustible siding	
21% to 30%		Fire-resistive siding	
31% to 40%		<b>Combustible siding</b> <b>1</b>	
>41%			
<b><i>Additional Rating Factors (rate all that apply)</i></b>			
Topographic features	3		
History of high fire occurrence	4		
Severe fire weather potential	4		
<b>Separation of adjacent structures</b>	<b>1</b>		

For Numbers between 0 and 1 (including decimals), values are expressed as proportions. For example, 0.25 = 25%. For numbers greater than 1, a scale of 1 – 4 indicates risk potential. For example, a rating of 3 for topographic features indicates challenging topography such as steep ridges and canyons.

<b>Attribute</b>	<b>Scale*</b>
<b><i>Deck and fencing (predominant)</i></b>	
No deck/fence or noncombustible	0.25
Combustible deck and fence	0.75
<b><i>Building Set-back</i></b>	
>30 feet to slope	
<30 feet to slope	
<b>Available Fire Protection</b>	
<b><i>Water Sources</i></b>	
Water Source	
<b><i>Organized Response</i></b>	
Station <5 miles from community	1
Station >5 miles from community	
<b>Placement of Gas and Electric Utilities</b>	
Both underground	
Aboveground gas	1
Aboveground electric	

For Numbers between 0 and 1 (including decimals), values are expressed as proportions. For example, 0.25 = 25%. For numbers greater than 1, a scale of 1 – 4 indicates risk potential. For example, a rating of 3 for topographic features indicates challenging topography such as steep ridges and canyons.

# Community Assessment Summary

**Community Wildfire Hazard Rating** (lowest possible is 25%)

**58% Moderate**

## Attribute

Access points and exits

Road width

Road conditions

Fire response vehicle access

Street signs presence and condition

Main vegetation type

Defensible space

Slope

Roofing

Siding materials (predominant)

Deck and fencing (predominant)

Building set-back

Water sources

Distance to nearest fire station

Placement of gas and electric utilities

Topographic features

History of high fire occurrence

Severe fire weather potential

Separation of adjacent structures

## Risk Rating

Low

High

Moderate

High

Low

High

Moderate

Low

Low

Extreme

Extreme

Moderate

Low

Moderate

Extreme

Extreme

Extreme

Extreme

Extreme

# Community Assessment Summary

**Community Wildfire Hazard Rating** (lowest possible is 25%)

**58% Moderate**

## Attribute

Access points and exits

Road width

Road conditions

Fire response vehicle access

Street signs presence and condition

Main vegetation type

Defensible space

Slope

Roofing

Siding materials (predominant)

Deck and fencing (predominant)

Building set-back

Water sources

Distance to nearest fire station

Placement of gas and electric utilities

Topographic features

History of high fire occurrence

Severe fire weather potential

Separation of adjacent structures

## Risk Rating

Low

High

Moderate

High

Low

High

Moderate

Low

Low

Extreme

Extreme

Moderate

Low

Moderate

Extreme

Extreme

Extreme

Extreme

Extreme

## Risk Rating

Low

Moderate

Moderate

Moderate

Low

High

Moderate

Low

Low

Extreme

Extreme

Moderate

Low

Low

Extreme

Extreme

Extreme

Extreme

Low

# Community Assessment Summary

**Community Wildfire Hazard Rating** (lowest possible is 25%)

**58% Moderate**

## Attribute

Access points and exits

Road width

Road conditions

Fire response vehicle access

Street signs presence and condition

Main vegetation type

Defensible space

Slope

Roofing

Siding materials (predominant)

Deck and fencing (predominant)

Building set-back

Water sources

Distance to nearest fire station

Placement of gas and electric utilities

Topographic features

History of high fire occurrence

Severe fire weather potential

Separation of adjacent structures

## Improvement Required to Lower Risk

No improvement required

Make roads wider

Pave roads

Have large turnarounds at all cul-de-sacs

No Improvements required

Reduce tree density / Maintain Grant

Increase fire breaks on property

No Improvements required

No Improvements required

Ignition resistant siding

Ignition resistant decking / fencing

Move homes away from hillsides

No Improvements required

No Improvements required

Bury tanks & electrical

Create fire barrier from critical topography

Get credit for FLFD/USFS Response and Expand Education

Increase fire restrictions during critical periods

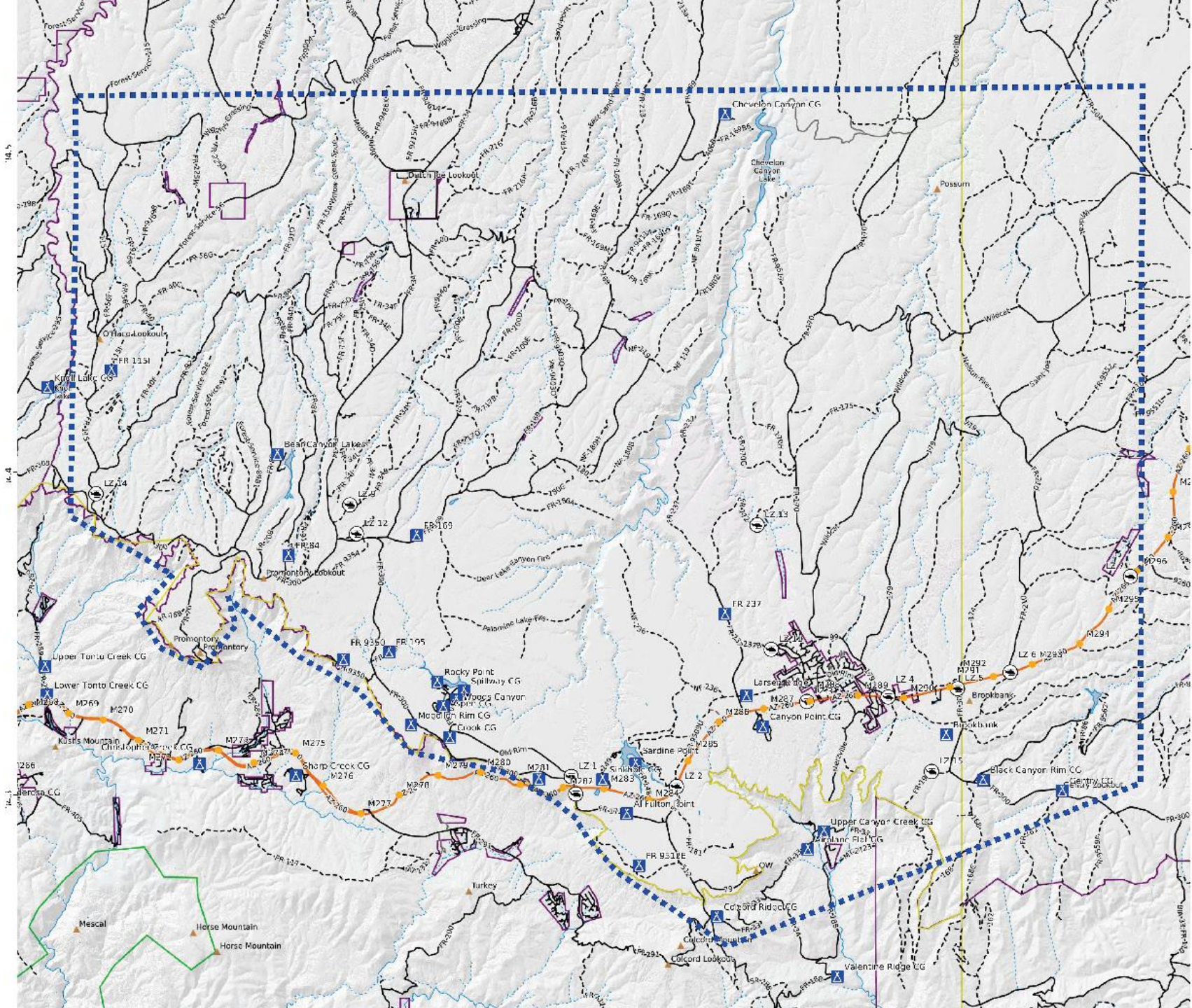
No Improvements required

## Forest Lakes Fire District

Forest Lakes Fire District (FLFD) is in the southeastern corner of Coconino County and primarily serves the Forest Lakes community, which is surrounded by the heavily visited Apache-Sitgreaves National Forest (Black Mesa Ranger District). Situated at 7,562 feet on the Mogollon Rim, the area features **dense mixed conifer vegetation** and steep canyon walls. Wildfire threats mainly stem from lightning and unattended campfires, with the region's topography, vegetation, and prevailing southwest winds increasing fire risk.

**The fire district covers about 10.5 square miles and relies mostly on volunteers, with only two full-time staff.** Most residents live within five miles of the fire station, and the community's well-marked road system aids emergency response (FLFD 2025).

**Although Forest Lakes is not a registered Firewise USA community,** many residents support fuels reduction efforts. FLFD and the Forest Lakes Owners Association actively promote Firewise principles through cost-share grants, education, and hazardous fuels reduction programs (FLFD 2025). In 2025, the district received a Hazardous Fuels Reduction Grant from DFFM to reimburse homeowners for up to 80% of tree thinning costs and up to \$4,000 per acre (FLFD 2025). **However, the predominance of elderly and part-time residents poses challenges for completing mitigation work.**



The blue dashed line defines the Forest Lakes Fire District service area.

It is over 330 square miles, not just the 10.5 square miles of Forest Lakes.

There are just 2 full-time staff, Chief and Admin.

The station is staffed 24 / 7 by teams of 2 to 4 from a pool of 39 Firefighters / Paramedic / EMTs that rotate shifts.

There are 2 to 5 on-call First Responder / EMTs within the neighborhood.

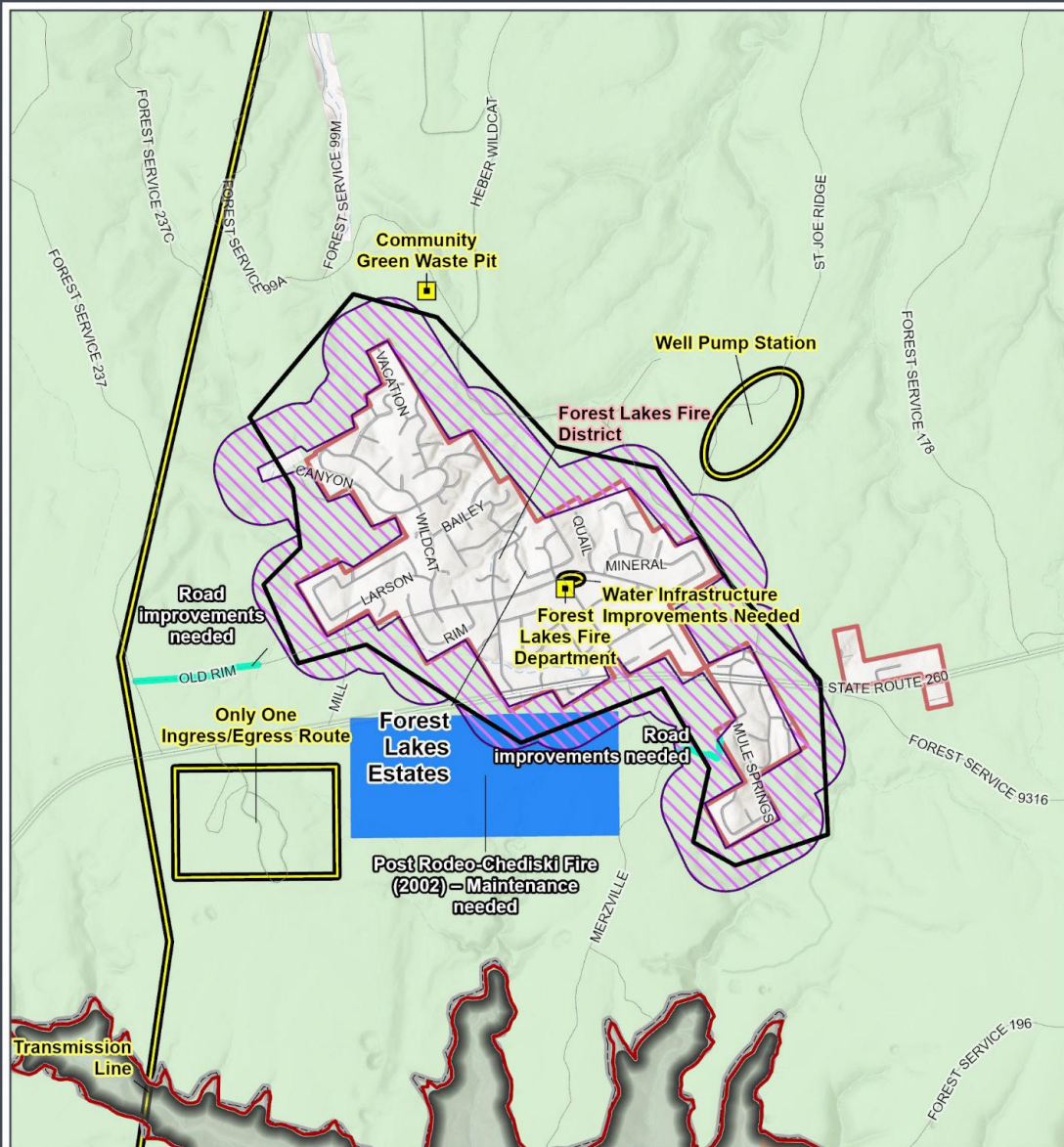


Figure C.5 identifies areas of concern throughout the community while also including past and future fuel reduction projects, potential egress routes, and recently completed fuels reduction projects. Areas of concern for Forest Lakes were delineated by the fire chief and comprise a buffer distance around the community boundary. Within this buffer, fuel treatments or other mitigation actions should be prioritized as outlined in the recommendation table.

The community assessment summary table below shows risk ratings for each attribute evaluated during the community field visits. The greatest hazards identified within the FLFD response area related to siding materials, deck and fencing materials, placement of gas and utilities, topographic features, history of fire occurrence, severe fire weather potential, and separation of adjacent structures. These factors should be used by the community to guide mitigation actions in order to modify the risk rating, especially for high and extreme attributes.

More information about FLFD is available at: <https://flfdaz.com/>

A COMMUNITY WILDFIRE PROTECTION PLAN FOR RURAL FIRE DISTRICTS AND TRIBAL COMMUNITIES IN COCONINO COUNTY

**Areas of Concern and CWPP Projects: Forest Lakes Estates**

<ul style="list-style-type: none"> <li>— Roadway</li> <li>■ Feature Point</li> <li>— Feature Line</li> <li>▭ Feature Area</li> <li>— Potential Egress Route</li> <li>— Past Fuels Reduction Project</li> <li>▭ Area of Concern</li> </ul>	<ul style="list-style-type: none"> <li>▭ Community Boundary</li> <li>▭ CWPP Boundary</li> <li>▭ Fire District</li> </ul> <p><b>Land Ownership</b></p> <ul style="list-style-type: none"> <li>▭ Bureau of Indian Affairs</li> <li>▭ Private</li> <li>▭ US Forest Service</li> </ul>
---	--

Coconino County, AZ  
NAD 1983 UTM Zone 12N  
34.3376°N 110.8012°W

0 1,000 2,000 US Feet  
0 525 1,050 Meters

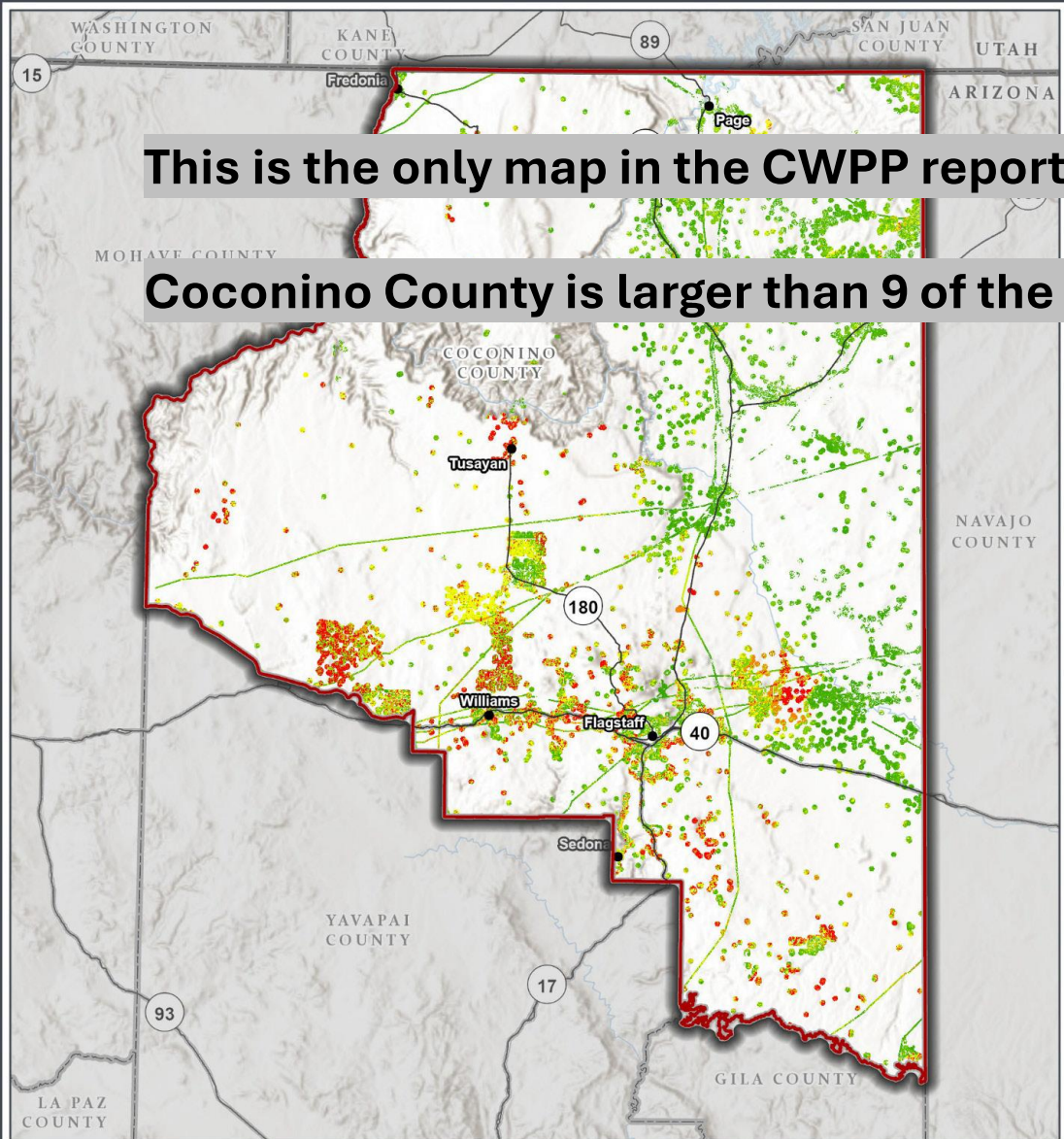
1:50,000

Base Map: Esri ArcGIS Online, accessed November 2025, Updated: 11/6/2025

**SWCA**  
ENVIRONMENTAL CONSULTANTS

This is the only map in the CWPP report that is presented at the county and community level.

Coconino County is larger than 9 of the 50 states in area.



**A COMMUNITY WILDFIRE PROTECTION PLAN FOR RURAL FIRE DISTRICTS AND TRIBAL COMMUNITIES IN COCONINO COUNTY**

**Wildfire Risk to Structures and Infrastructure**

- City
- Highway
- CWPP Boundary
- County Boundary
- State Boundary

■ Very High  
■ Low

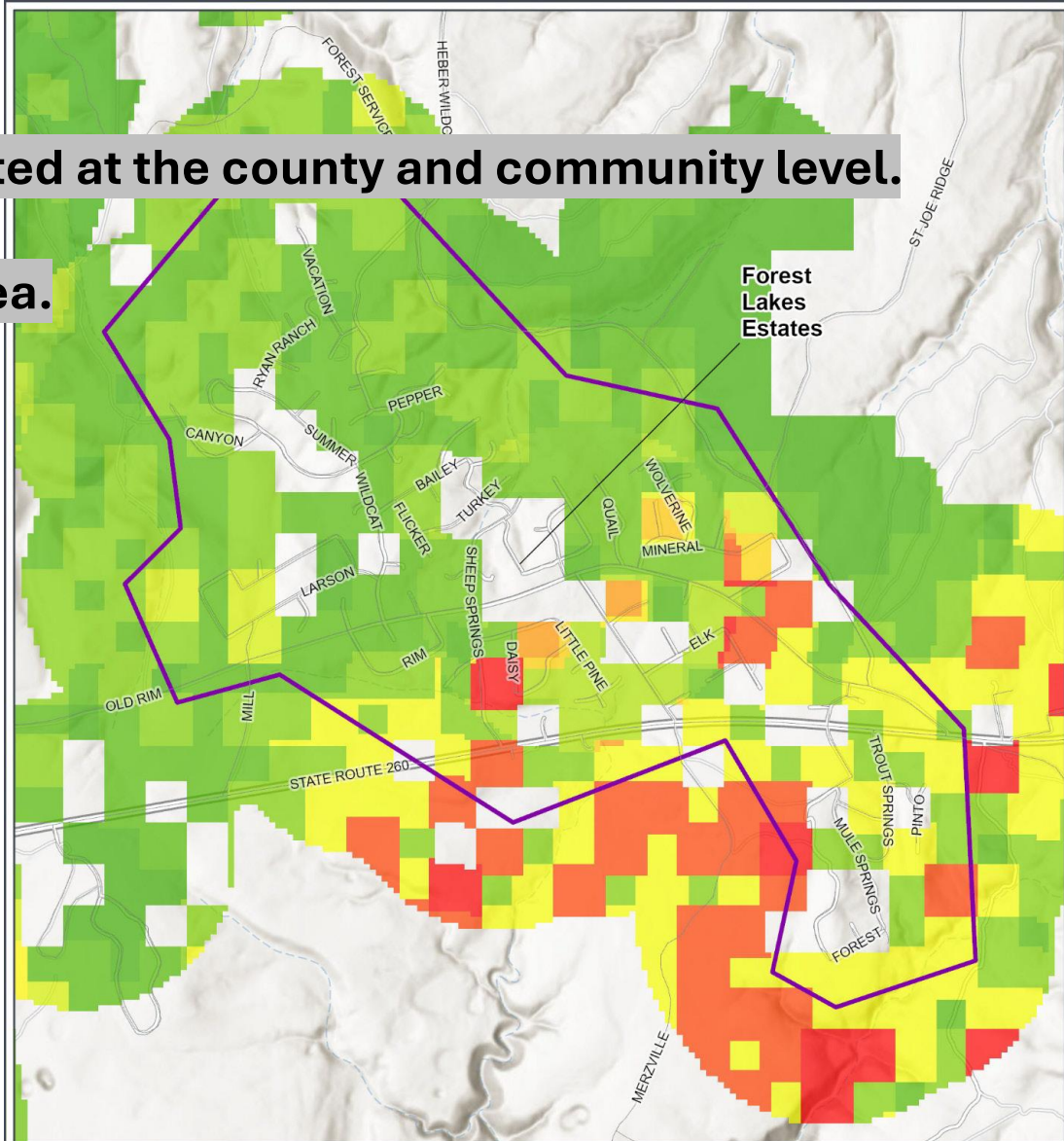
Coconino County, AZ  
 NAD 1983 UTM Zone 12N  
 35.6303°N 112.0444°W

0 10 20 Miles  
 0 10 20 Kilometers

1:1,950,000

Base Map: Esri ArcGIS Online, accessed January 2026, Updated: 1/21/2026

**SWCA**  
 ENVIRONMENTAL CONSULTANTS



**A COMMUNITY WILDFIRE PROTECTION PLAN FOR RURAL FIRE DISTRICTS AND TRIBAL COMMUNITIES IN COCONINO COUNTY**

**Wildfire Risk to Structures and Infrastructure: Forest Lakes Estates**

- Roadway
- Community Boundary
- CWPP Boundary
- County Boundary
- State Boundary

■ Very High  
■ Low

Coconino County, AZ  
 NAD 1983 UTM Zone 12N  
 34.3376°N 110.8012°W

0 1,000 2,000 US Feet  
 0 350 700 Meters

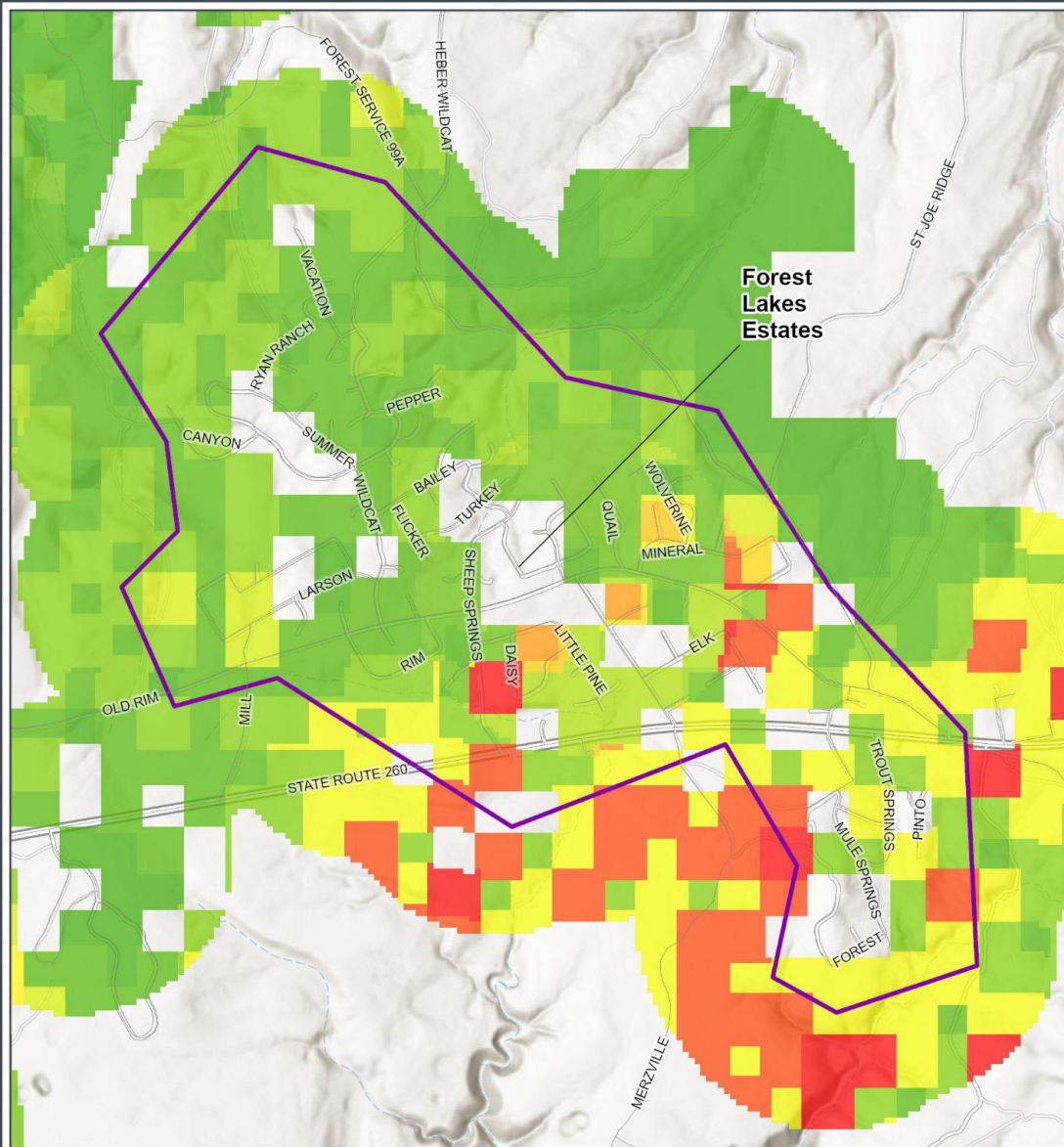
1:33,000

Base Map: Esri ArcGIS Online, accessed January 2026, Updated: 1/21/2026

**SWCA**  
 ENVIRONMENTAL CONSULTANTS

The south side of Forest Lakes will be the focus:

- Grant priority
- BMRD thinning on south side



A COMMUNITY WILDFIRE PROTECTION PLAN FOR RURAL FIRE DISTRICTS AND TRIBAL COMMUNITIES IN COCONINO COUNTY

**Wildfire Risk to Structures and Infrastructure: Forest Lakes Estates**

— Roadway	▬ State Boundary
▭ Community Boundary	<b>Wildfire Risk to Structures and Infrastructure</b>
▭ CWPP Boundary	Very High
▭ County Boundary	Low

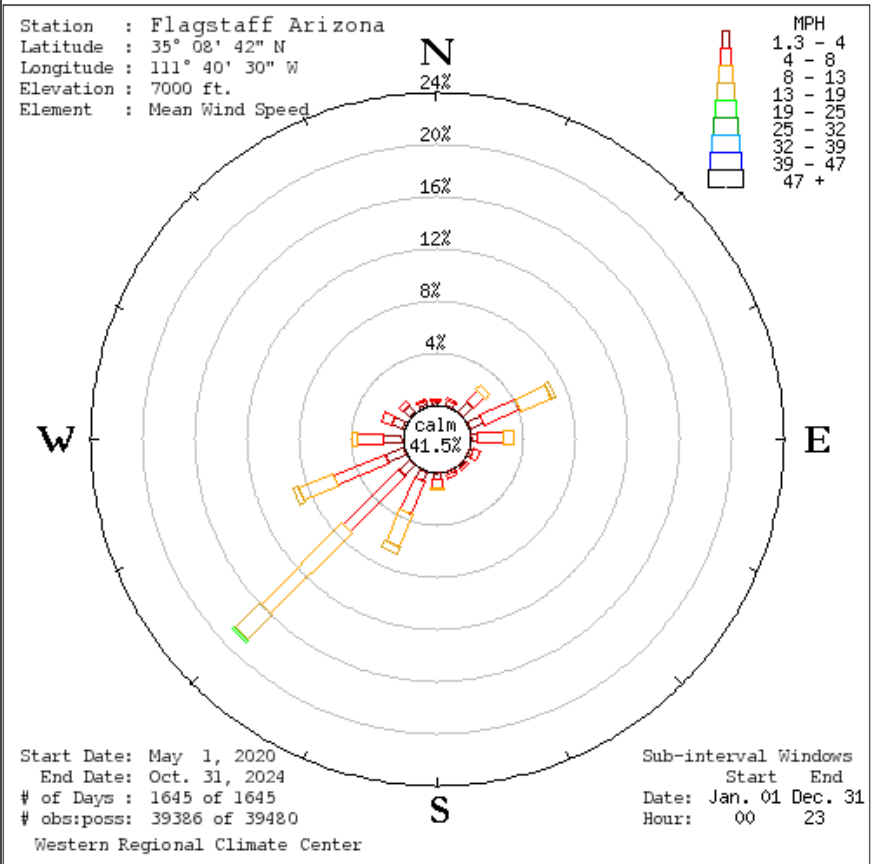
Coconino County, AZ  
NAD 1983 UTM Zone 12N  
34.3376°N 110.8012°W

0 1,000 2,000 US Feet  
0 350 700 Meters

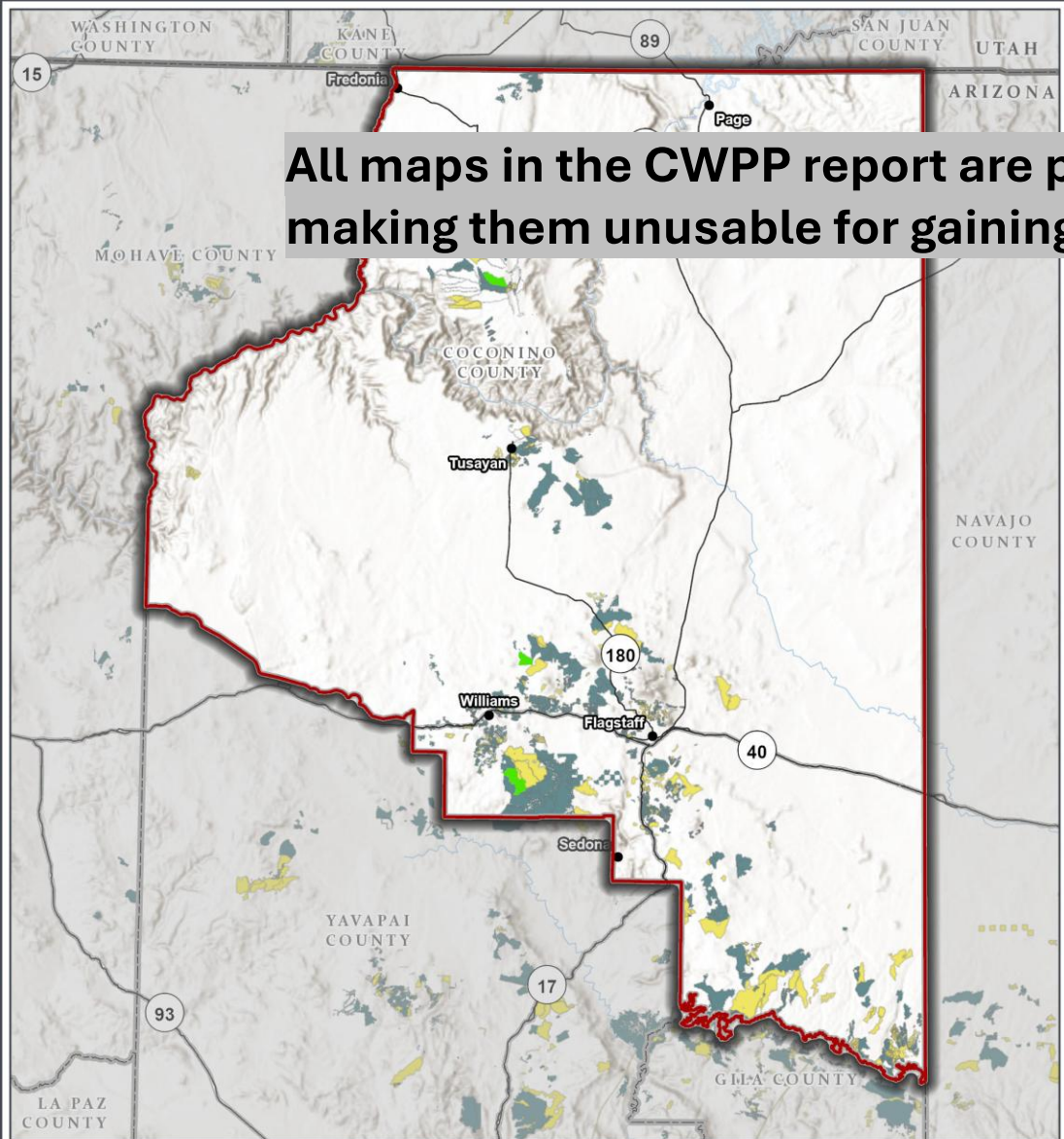
1:33,000

Base Map: Esri ArcGIS Online, accessed January 2026, Updated: 1/21/2026

**SWCA**  
ENVIRONMENTAL CONSULTANTS



All maps in the CWPP report are presented at the county level, making them unusable for gaining knowledge or define future plans at the community level.



A COMMUNITY WILDFIRE PROTECTION PLAN FOR RURAL FIRE DISTRICTS AND TRIBAL COMMUNITIES IN COCONINO COUNTY

**ReSHAPE and USFS Fuel Treatments**

- City
- Highway
- ▭ CWPP Boundary
- ▭ County Boundary
- ▭ State Boundary
- USFS Rx Burn
- ReSHAPE Years Since Treatment - Treatment index facts nfpors
  - 0-5
  - 6-10

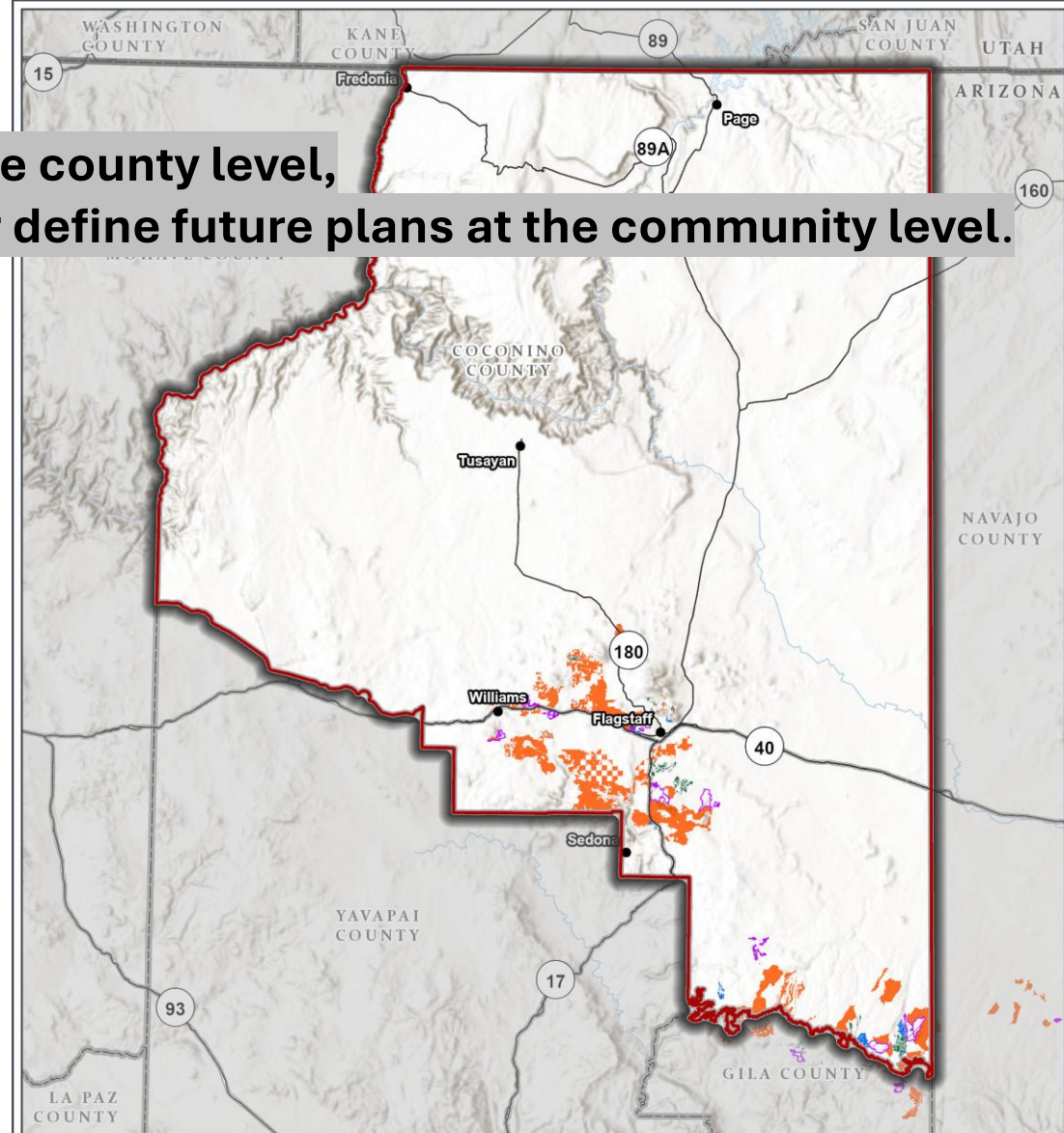
Coconino County, AZ  
 NAD 1983 UTM Zone 12N  
 35.6303°N 112.0444°W

Credits: ReSHAPE, USFS

1:1,950,000

Base Map: Esri ArcGIS Online, accessed December 2025, Updated: 12/18/2025

**SWCA**  
 ENVIRONMENTAL CONSULTANTS



A COMMUNITY WILDFIRE PROTECTION PLAN FOR RURAL FIRE DISTRICTS AND TRIBAL COMMUNITIES IN COCONINO COUNTY

**4FRI Fuel Treatments**

- City
- Highway
- ▭ CWPP Boundary
- ▭ County Boundary
- ▭ State Boundary
- ▭ Timber Harvest Current Projects
- ▭ Timber Harvest Completed Projects
- ▭ Timber Harvest 5 Year Plan

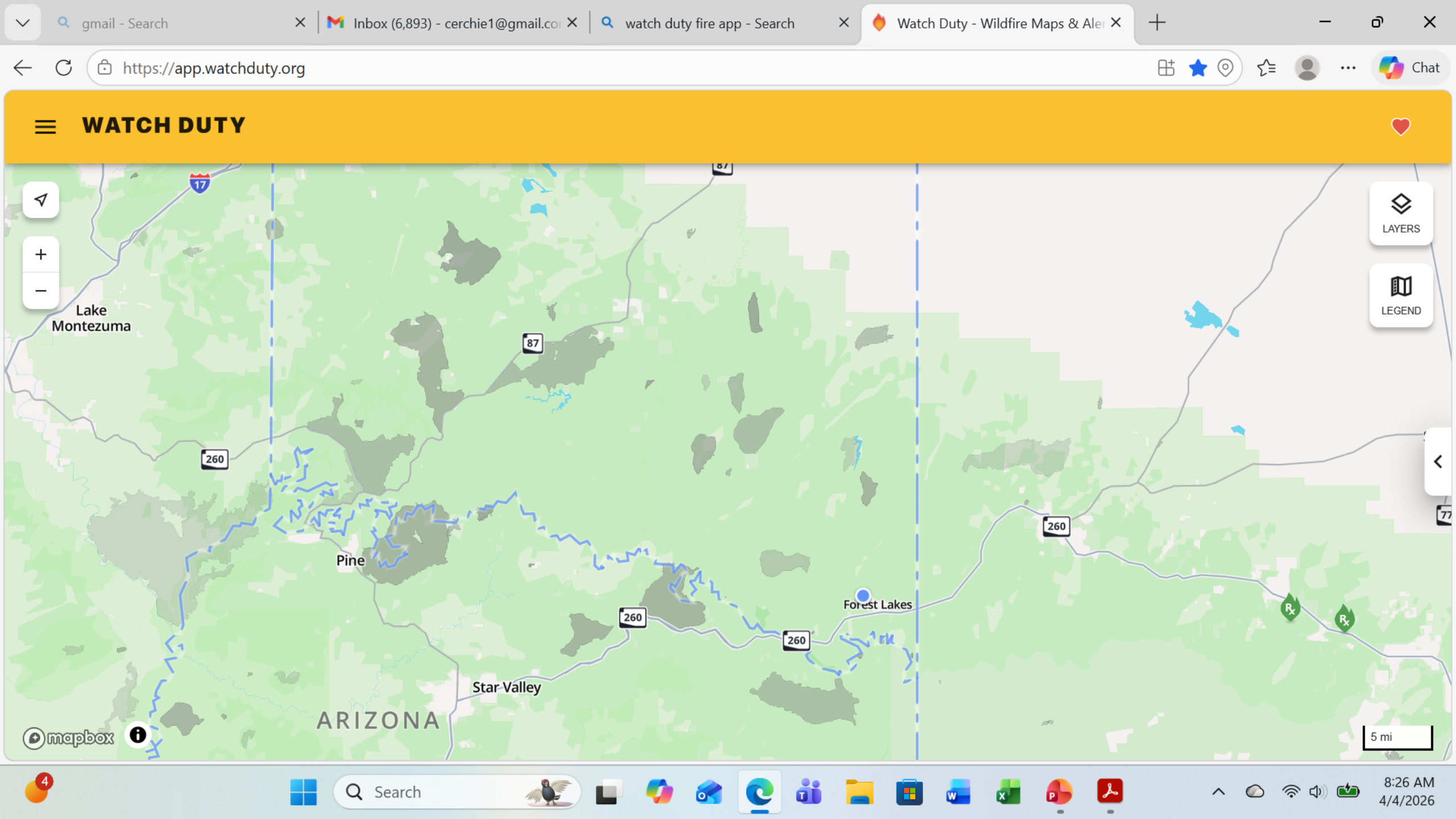
Coconino County, AZ  
 NAD 1983 UTM Zone 12N  
 35.6303°N 112.0444°W

Credits: 4FRI USDA

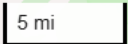
1:1,950,000

Base Map: Esri ArcGIS Online, accessed December 2025, Updated: 12/9/2025

**SWCA**  
 ENVIRONMENTAL CONSULTANTS



# WATCH DUTY



Search



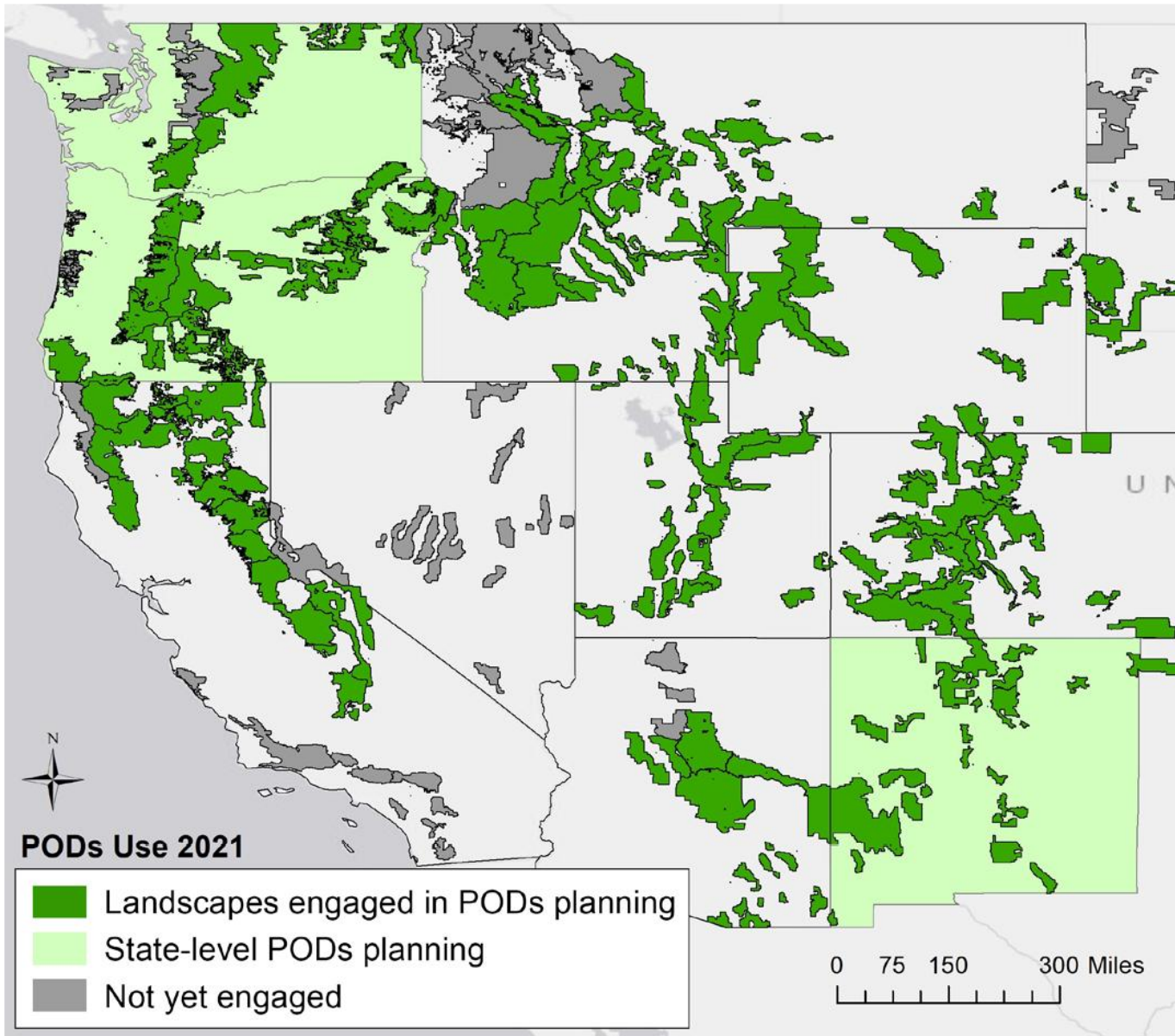
8:26 AM  
4/4/2026





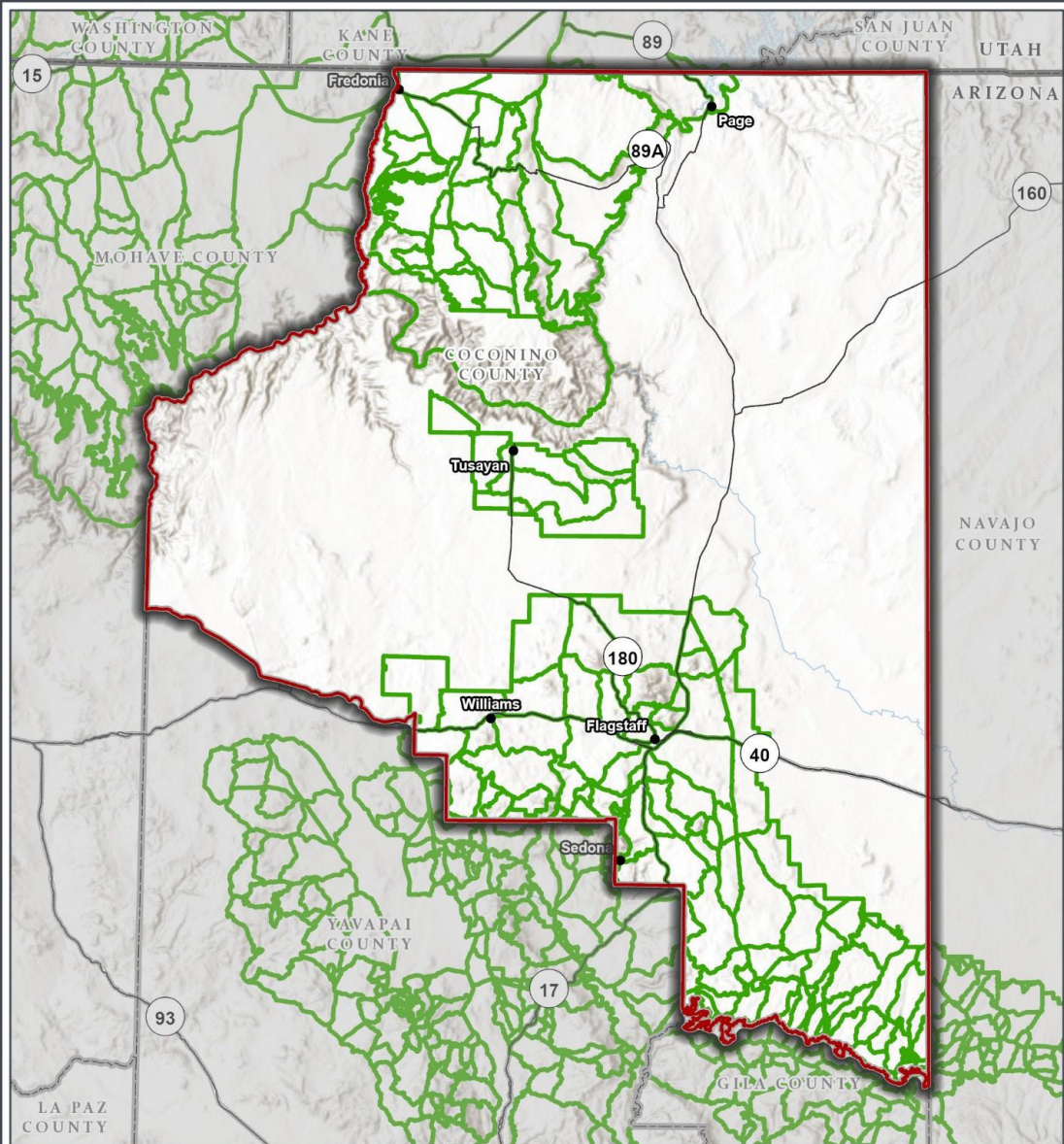
Topic	Recommendation
Support and Expansion of Lot Thinning Grant Program	<ul style="list-style-type: none"><li data-bbox="631 382 2339 616">• Maintain and expand participation in the ongoing 80/20 cost-share lot thinning grant through 2027, with efforts to secure continued or replacement funding beyond expiration.</li><li data-bbox="631 668 2339 988">• Encourage participation among absentee property owners through mailed notices, telephone contact, online outreach, and on-site inspections coordinated with the property owners' association <b>once the grant backlog is not full.</b></li></ul>

Topic	Recommendation
<b>Forest Coordination and Perimeter Fuels Management</b>	<ul style="list-style-type: none"><li data-bbox="614 354 2333 839">• Collaborate with the USFS (Black Mesa Ranger District [BMRD]) and utility companies to continue and expand fuel treatments surrounding the community, emphasizing maintenance of existing fuel breaks near the transmission line corridor and development of <b>shaded breaks</b> along the remaining perimeter. <b>Prioritize treatment on the community's south side where wildfire risk is greatest.</b> <b>Work with BMRD to create fire break out of Merzville Rd on the south side.</b></li><li data-bbox="614 886 2226 1001">• Align community fuel work with the BMRD's prescribed fire and forest health initiatives.</li><li data-bbox="614 1053 2137 1172">• Maintain past USFS thinning treatments near the community with prescribed fire.</li><li data-bbox="614 1219 2232 1410">• <b>Integrate treatments with existing planned fuels activities, including hardening of Potential Operational Delineation (POD) boundaries when possible.</b></li></ul>



## What are PODs?

- PODs are fire management and planning units.
- PODs have boundaries defined by potential control features that can be leveraged for fire containment during a wildfire or prescribed fire. Typical POD boundaries are a combination of roads, rivers, major ridges, barren areas, waterbodies, major fuel changes, or other locations that facilitate control.
- The process of developing PODs is done collaboratively by local wildland fire managers, stakeholders, and scientists.
- Collaborators identify a network of best available control features, often using analytical tools to assess the feature's quality and suitability.
- When paired with a wildfire risk assessment, PODs can be used to quantify and summarize risk into strategic response zones that provide the starting point for strategic planning of incident response.



A COMMUNITY WILDFIRE PROTECTION PLAN FOR RURAL FIRE DISTRICTS AND TRIBAL COMMUNITIES IN COCONINO COUNTY

**Potential Operational Delineations**

- City
- Highway
- ▭ County Boundary
- ▭ State Boundary
- ▭ CWPP Boundary
- ▭ Potential Operational Delineations (PODs)

Coconino County, AZ  
 NAD 1983 UTM Zone 12N  
 35.6303°N 112.0444°W

0 10 20 Miles  
 0 10 20 Kilometers

Credits: RMA

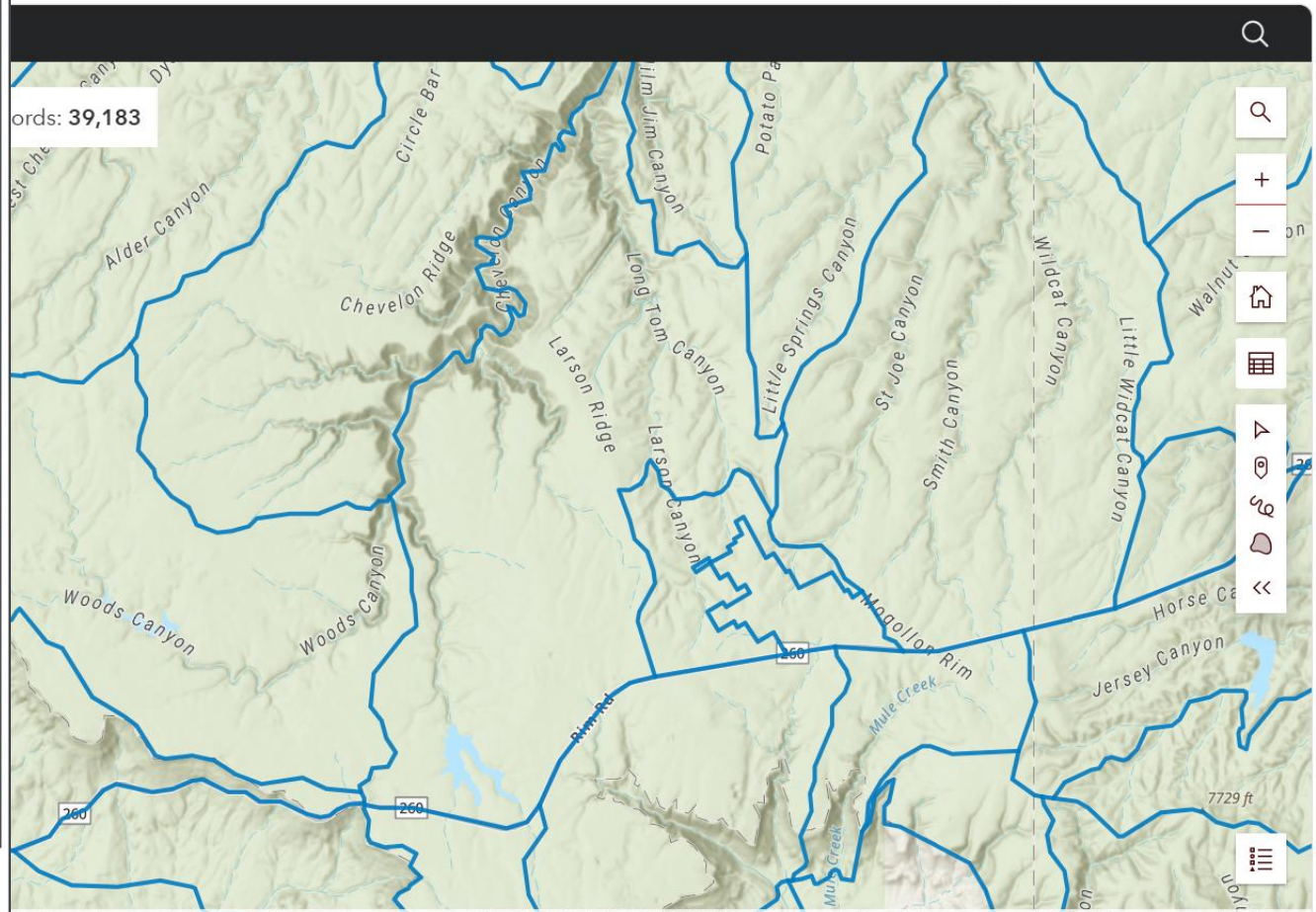
1:1,950,000

Base Map: Esri ArcGIS Online, accessed August 2025, Updated: 8/15/2025

**SWCA**  
 ENVIRONMENTAL CONSULTANTS

PODs\_Line | National Interagency | ...

onal-potential-operational-delineations-pods-public/explore?layer=0&location=34.357566%2C...



TomTom | Garmin | SafeGraph | GeoTechnologies, Inc | NASA | NGA | USGS | METI/NASA | Bureau of Land Management | EPA | NP... Powered by Esri

Windows taskbar showing system tray icons (network, volume, battery) and the time 2:31 PM on 4/4/2026. Application icons for various software are visible.

Topic	Recommendation
<b>Dense Fuel Reduction and Stand Improvement</b>	<ul style="list-style-type: none"><li data-bbox="614 372 2321 686">• Target treatment of overstocked and “dog-hair” stands within and adjacent to the community using mechanical/hand thinning, mastication, and pile burning. Prioritize areas near access roads, structures, and critical infrastructure.</li><li data-bbox="614 743 2321 1058">• Prioritize maintenance and mitigation of vegetation around critical infrastructure, including the main transmission line, domestic water improvement district, well pump station, and snow well.</li><li data-bbox="614 1115 2321 1343">• Coordinate with BMRD to allow homeowners adjacent to NF boundaries remove “dog-hair” stands on NF within 100 feet of homeowner's boundary.</li></ul>

Topic	Recommendation
<b>Short-Term Rental, New Resident, and Visitor Education Program and Compliance</b>	<ul style="list-style-type: none"><li data-bbox="614 337 2321 608">• Develop an outreach program specifically for short-term rental guests that provides wildfire safety information, evacuation procedures, and restrictions on open burning. Coordinate with rental platforms, local property managers, and the property owners' association to ensure consistent communication through signage, digital check-in materials, and permit requirements.</li><li data-bbox="614 651 2359 808">• Expand and tailor Firewise outreach efforts to reach new, absentee, and seasonal residents, and consider hosting a Firewise home tour to demonstrate effective defensible space and home hardening practices.</li><li data-bbox="614 851 2333 1065">• Collaborate with the County Board of Supervisors to explore an ordinance establishing clear consequences for fire restriction violations, including fines or citations issued to property owners and guests. The ordinance could also require proof of defensible space compliance as part of rental permit renewals.</li><li data-bbox="614 1108 2359 1265">• Develop and implement an electrical compliance outreach campaign, in coordination with the County, and evaluate enforcement mechanisms to reduce wildfire ignition risk on private lots, RV parks, and similar properties.</li></ul>

Topic	Recommendation
<b>Green Waste Management Continuity</b>	<ul style="list-style-type: none"><li data-bbox="614 372 2313 515">• Sustain the community green waste pit and property owners' association incentive program.</li><li data-bbox="614 568 2364 801">• Assess whether there's a need to provide green waste disposal fee vouchers for low-income residents and implement, if necessary.</li></ul>

Topic	Recommendation
<b>Water System Improvements</b>	<ul style="list-style-type: none"><li>• Seek funding opportunities to implement water system improvements such as installing additional hydrants at (closer to) the neighborhood-forest boundary, replacing aging pipes, and waterline upgrades to improve pressure.</li></ul>

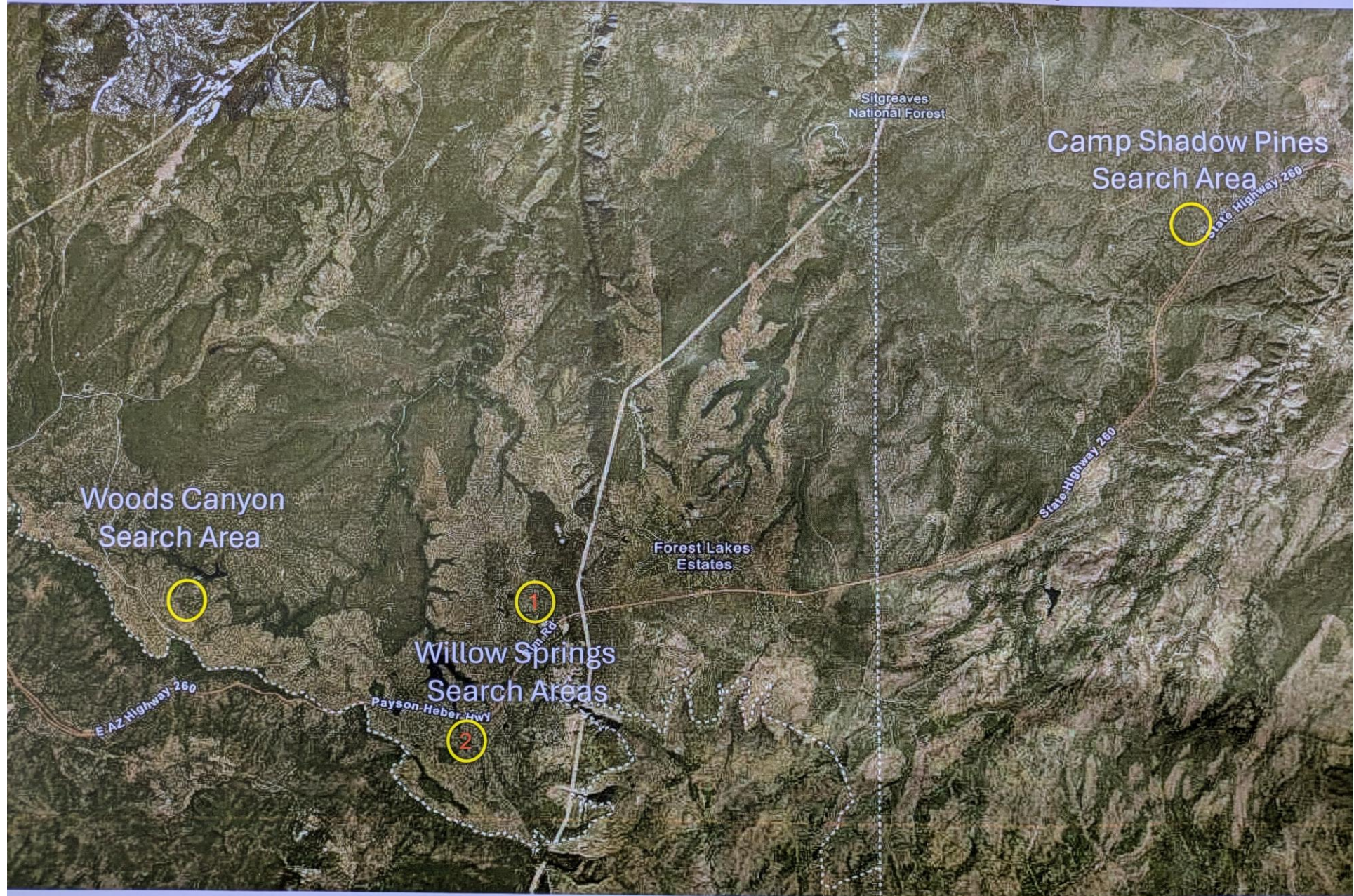
Topic	Recommendation
<p><b>Access and Evacuation Improvements</b></p>	<ul style="list-style-type: none"> <li>• Assess options to add additional access points, particularly where subdivisions have only one access point (e.g., Canyon Point Campground, State Route 260, Old Rim Rd, Gunslinger Rd / Hillcrest Rd / Merzville Rd on south side of State Route 260).</li> <li>o Continue collaboration with BMRD for road accessibility and ongoing maintenance during emergencies – Assess feasibility of using trails and USFS roads as alternative access points, including Forest Service Roads 99 and 237.</li> <li>– USFS roads and trails that can be used as alternative access points should be maintained and clearly marked.</li> <li>• Consider improving/paving critical access roads.</li> <li>• Collaborate with the BMRD to address unauthorized road creation and road opening by visitors.</li> <li>• Determine whether a communication and/or evacuation plan for people with disabilities and elderly people is needed.</li> <li>o Encourage development of group evacuation plans at the subdivision/neighbor level through the property owners’ association or other related community organizations.</li> <li>o Develop a list, communication plan and guidance/protocol for neighbors who need assistance with evacuating.</li> <li>• Conduct a study to determine whether sirens are needed, and if so, seek funding for installation.</li> <li>• Develop and deliver Ready, Set, Go campaign resources so residents and visitors sign up for the program, and they understand where to access information and how to respond appropriately to the three alert levels.</li> <li>• Complete a study to determine whether new RV parks, campgrounds, and other developments are safe to allow/construct, considering the areas’ egress capacity.</li> </ul>

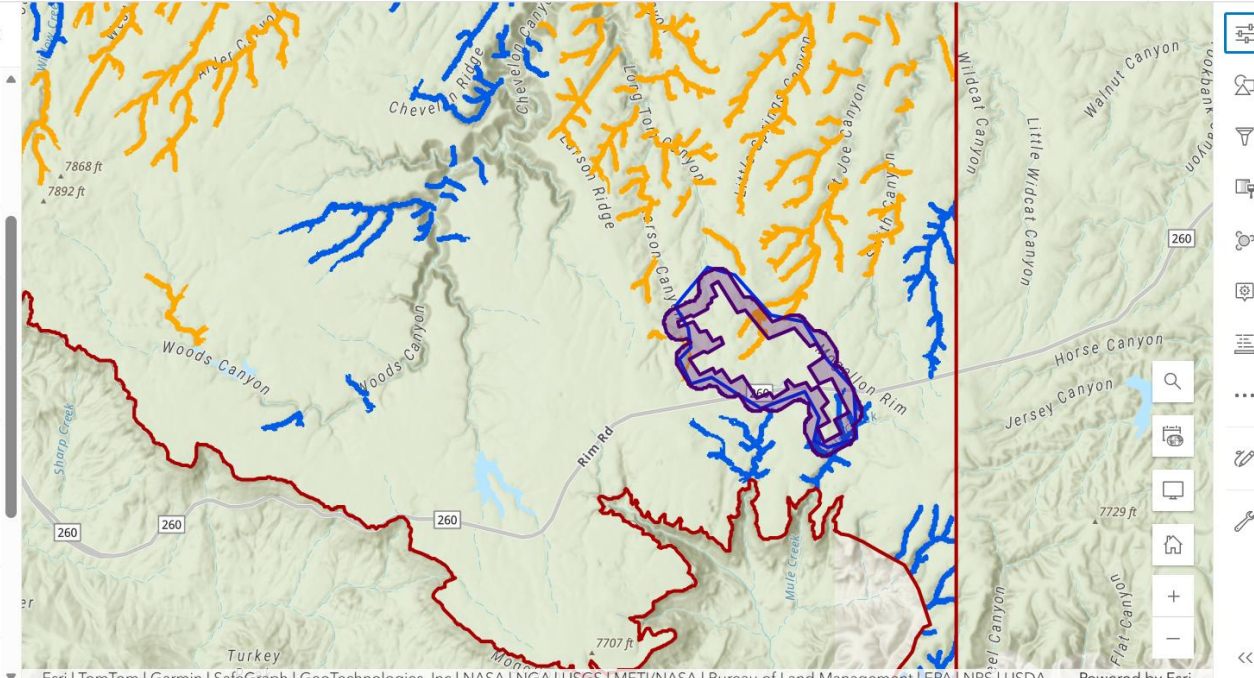
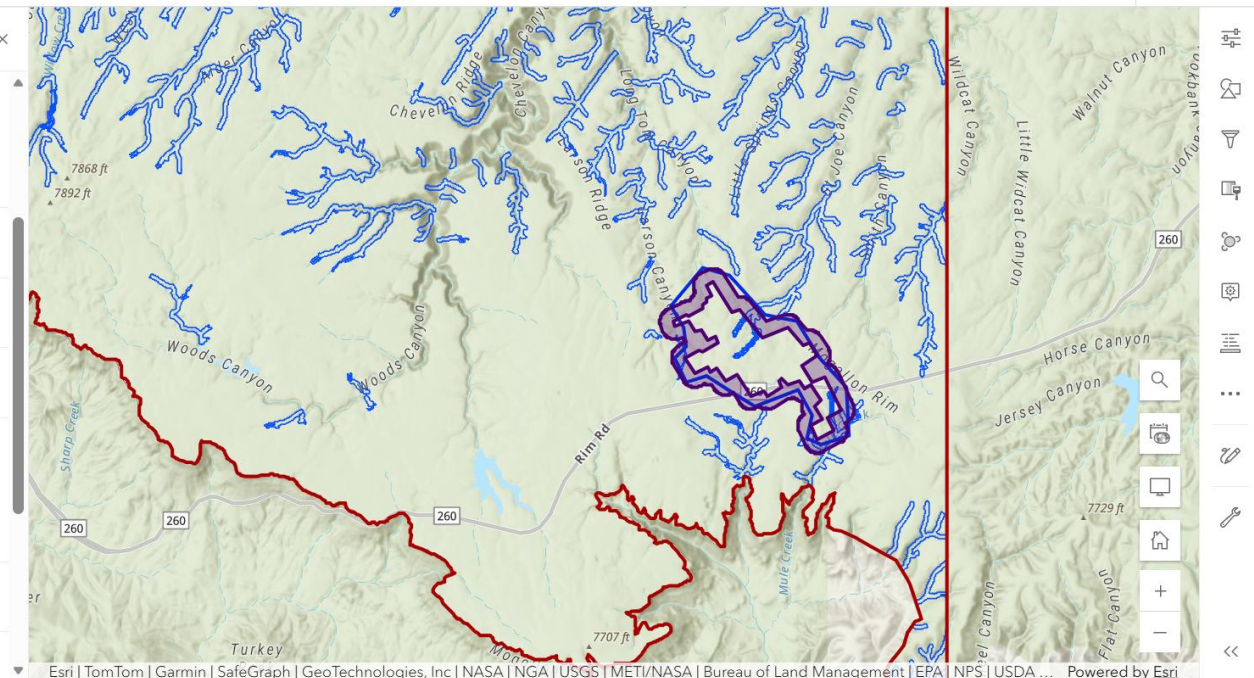
Topic	Recommendation
<b>Defensible Space Assistance for Vulnerable Residents</b>	<ul style="list-style-type: none"><li>• Seek partnerships (e.g., DFFM inmate crews) to provide defensible space assistance programs for elderly or physically limited residents.</li><li>• Encourage community organizations to offer volunteer cleanup days for elderly or disabled neighbors.</li><li>• Create a local network and list of potential volunteers for neighbors helping neighbors.</li><li>• Create and distribute a list of potential contractors for defensible space and home hardening.</li></ul>

Topic	Recommendation
<b>Support for No-Camping/Campfire Ordinance</b>	<ul style="list-style-type: none"><li data-bbox="614 372 2283 694">• Work with the County, USFS, and other relevant agencies to assess the feasibility of implementing a no-camping/no campfires ordinance in areas adjacent to community boundaries during peak fire season.</li><li data-bbox="614 743 2354 979">• Explore the feasibility of adding signage to the Forest Lakes community to state that National Forest lands aren't accessible through the community.</li><li data-bbox="614 1022 2354 1258">• <b>Develop a consistent fire restriction approach between BMRD and Coconino County on the fire restrictions for Forest Lakes and the surrounding NF.</b></li></ul>

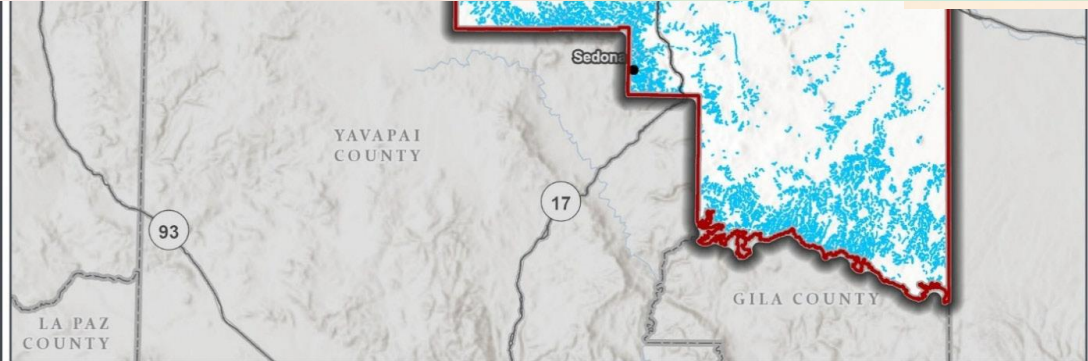
Topic	Recommendation
<b>Equipment and Communication Systems Improvements</b>	<ul style="list-style-type: none"><li>• Coordinate with Arizona Department of Transportation (ADOT), Apache-Sitgreaves National Forests, Verizon, and the County to identify areas to build cell towers within FLFD response area ( potential areas are Willow Springs Lake, Woods Canyon Lake, and Bear Canyon Lake).</li><li>• Seek additional funds to construct cell towers along Highway 260 and Apache-Sitgreaves National Forests to address remote areas with limited cell coverage within response zones.<ul style="list-style-type: none"><li>o Prioritize areas where cell coverage is poor or non-existent and frequently visited.</li></ul></li><li>• Seek grant funds for a FLFD drone program as a situational awareness force multiplier to support FLFD service area.</li><li>• Seek grant funds for a FLFD wildland brush truck / Attack Type 6 truck to support service area.</li><li>• Seek grant funds for replacement or upgrade of firefighter equipment, including engines, PPE, medical equipment and water handling apparatus.</li><li>• Seek grant funds for FLFD communications below the Rim (260 and Young Rd).</li><li>• Study and seek grant funds for debris flow barriers for South Side.</li></ul>

# DW Tower – Apache Sitgreaves NF 260 Corridor plan





Windows taskbar showing search bar, application icons, system tray, and time: 7:55 PM 4/8/2026



**A COMMUNITY WILDFIRE PROTECTION PLAN FOR RURAL FIRE DISTRICTS AND TRIBAL COMMUNITIES IN COCONINO COUNTY**

**Debris Flow Corridors**

- City
- Highway
- ▭ CWPP Boundary
- ▭ County Boundary
- ▭ State Boundary
- ▭ Debris Flow Corridors

Coconino County, AZ  
NAD 1983 UTM Zone 12N  
35.6303°N 112.0444°W

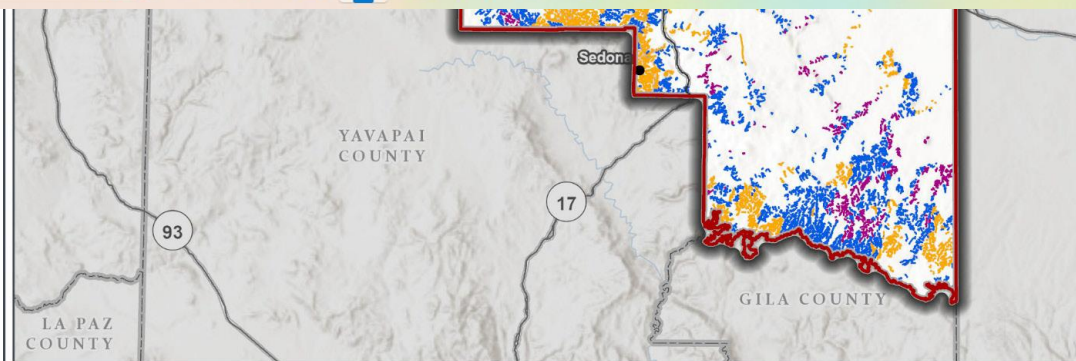
0 10 20 Miles  
0 10 20 Kilometers

1:1,950,000

SWCA ENVIRONMENTAL CONSULTANTS

Base Map: Esri ArcGIS Online, accessed December 2025, Updated: 12/9/2025

Windows taskbar showing search bar, application icons, system tray, and time: 7:54 PM 4/8/2026



**A COMMUNITY WILDFIRE PROTECTION PLAN FOR RURAL FIRE DISTRICTS AND TRIBAL COMMUNITIES IN COCONINO COUNTY**

**Debris Flow Corridor Treatment Areas Prioritization**

- City
- Highway
- ▭ CWPP Boundary
- ▭ County Boundary
- ▭ State Boundary
- ▭ Low
- ▭ Medium
- ▭ High

Coconino County, AZ  
NAD 1983 UTM Zone 12N  
35.6303°N 112.0444°W

0 10 20 Miles  
0 10 20 Kilometers

1:1,950,000

SWCA ENVIRONMENTAL CONSULTANTS

Base Map: Esri ArcGIS Online, accessed December 2025, Updated: 12/18/2025

Topic	Recommendation
<b>Public Education and Preparedness Program</b>	<ul style="list-style-type: none"><li data-bbox="614 337 2244 522">• Expand community wildfire education through the Firewise program and local programs, annual workshops, and evacuation drills. Focus on defensible space, home hardening, and evacuation readiness.</li><li data-bbox="614 558 2206 672">• Emphasize public understanding of wildfire risk and actions they can take to mitigate that risk.</li><li data-bbox="614 708 2226 822">• Inform residents about the dangers of overloading the electrical system (e.g., multiple RVs on a single lot) and potential ignitions.</li><li data-bbox="614 858 2333 972">• Collaborate with the USFS to engage and inform visitors about campfire safety and clarify fire restriction stages and required corresponding actions.</li><li data-bbox="614 1008 2321 1122">• Leverage existing community associations or groups to engage new and absentee residents.</li><li data-bbox="614 1158 2277 1272">• Install durable, tamper-resistant fire information signs in key public locations to share real-time fire danger levels and emergency updates.</li></ul>

# Summary of HW Requests in CWPP

- Updated Water Distribution Pipes and Associated HW
- Firefighting Equipment / Medical Equipment
- Brush Truck / Type 6 Engine / Drones
- Information Signs
- Neighborhood-wide Communication Hardware
- Communication Towers in Remote Service Area
- Debris Flow Barriers

# Questions