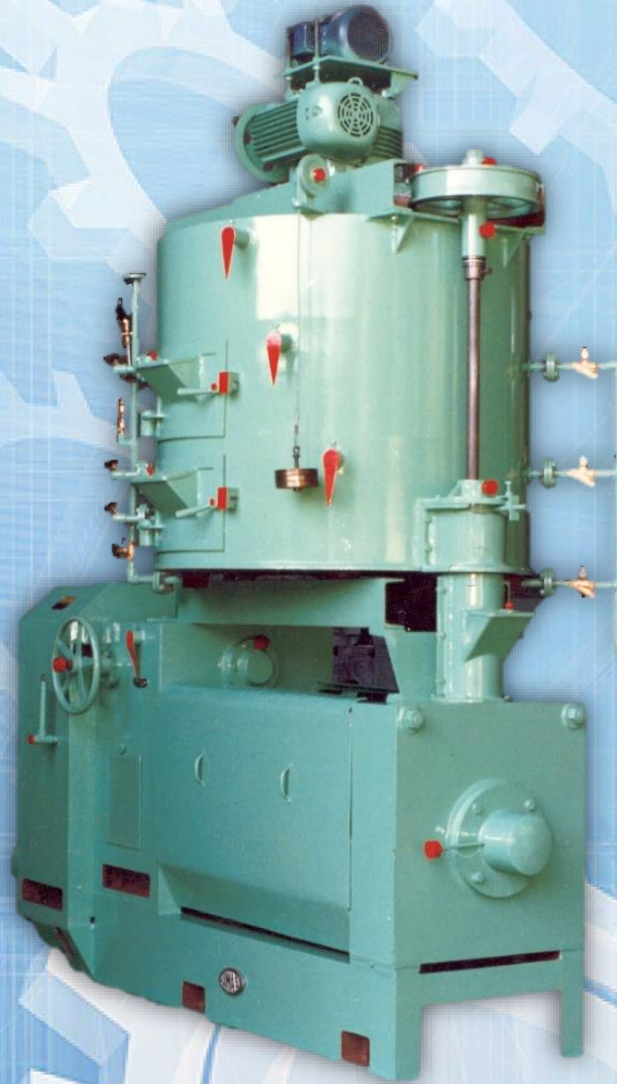




# UMAS ASHOKA MK3 AUTOMATIC OIL EXPELLER



**12 TO 15 TONS IN SINGLE PRESSING  
A BREAK-THROUGH IN HIGH EFFICIENCY AND QUALITY**

**UMAS OIL EXPELLERS  
ALL STEEL FABRICATED WITH CAST STEEL CHAMBER**



**UNITED OIL MILL MACHINERY AND  
SPARES PVT. LTD**

MANUFACTURERS AND EXPORTERS OF OIL MILL MACHINERY , OIL EXPELLERS / SCREW PRESS , SEED FLAKERS AND CRACKERS,  
SEED PREPARATORY EQUIPMENTS, OIL FILTERS, OIL REFINING PLANTS AND ALLIED EQUIPMENTS.





**UMAS**

**ASHOKA MK3 AUTOMATIC OIL EXPELLER**

**All Steel Fabrication and Improved Design**

For perfect alignment and stability.

**Vertical Hinged 44" Four-section Pressing Box**

Entirely eliminates the difficult task of removing box for relining or for replacement of worms, which saves lot of time and labour.

**Steel Casted Chambers**

Reduces time and labour for relining of Cage Bars.

**Shaft Withdrawal**

The main Worm Shaft can be withdrawn very easily without disturbing the gear section in any way. Pressure worms and spacing collars can be arranged without disturbing the main shaft. The thrust of the pressure worms is taken upon large thrust bearings.

**Pressure Cone**

The final pressure of the cake is positively controlled by a Pressure Cone which is hard faced.

**Cake at Discharge**

The cake thickness is controlled by a manually operated hand-wheel which is so simple that the choke system is independent of the main drive and there is no possibility of a sudden load being placed on expeller motor.

**Compressor / Force Feeder**

The ASHOKA MK3 Expeller feed is under automatic control and the seed or meal when entering the Expeller is given a preliminary compression by a small crammer-shaft driven by an automatically tensioned belt which stops when feed is excessive, starting again when the accumulation has been absorbed by the Expeller. A separate Stainless Steel Force Feeder can also be provided with individual Gearbox and motor.

**Power**

The power required to drive the "UMAS" ASHOKA MK3 Oil Expeller is 30HP and for cooker 5HP.

**Gear Box & Lubrication**

A double helical gear unit made from most suitable special steel, running in oil bath. All shafts run on antifriction bearings. Drive housing is oil tight and dust proof, totally enclosed design and is fitted with level indicator.

**Kettle & Process Steam**

The Steam Kettle is of adequate capacity with 48" dia. three-high steam jackets fitted with self-controlled meal inlet to prevent over flowing with open steam spray arrangement, safety valve, steam pressure gauge, steam traps and steam valves. The Kettle requires 100/120lbs. of process steam per hour at a pressure of 60lbs. per square inch.

**Capacity**

The capacity, however, varies with the material and working conditions. The average capacity is 12 to 15 tons in first pressing and 8/10 tons in second pressing.



**United Oil Mill Machinery & Spares Private Limited**

(Manufacturers & Established Exporters)

**Regd. Office :** D-58, Okhla Industrial Area, Phase 1, 2<sup>nd</sup> Floor, New Delhi 110020,

Phone: +91-11-26371200, 26371201, 26370202

**Works :** 39 Km, Mathura Road, Ballabgarh 121004 (Haryana), Phone +91-129-2309150

**Email :** [info@umas-india.com](mailto:info@umas-india.com), [umas.newdelhi@gmail.com](mailto:umas.newdelhi@gmail.com)

**Website :** [www.umas-india.com](http://www.umas-india.com)