



348 Market Street Inn

"The Pilar House"

Property Guide

"Every thing you need to know to have an exceptional stay."





Welcome to 348 Market Street Inn, the Pilar House!

Thank you for entrusting **Beach Vacation DESTINATION** with your vacation plans. We know that you have many choices when it comes to booking a vacation and we want to repay your trust by providing you with an effortless experience that leaves you with exceptional memories that last a life time.

You will find everything you need to know to fully enjoy this property and the amenities provided within the following pages of this guide.

If you have further questions or need assistance in any manner, please call/text **(850) 420-7529** or email **info@MyBVD.com** .

Visit our website, **www.MyBVD.com** , to view our BVD Vacation Guide. Here you will find information on local restaurants, other local beaches, and lots of fun activities such as golf, deep sea fishing, renting jet skis, etc.. Also, you can book our properties directly, saving you both time and money.

You can view and download this entire property guide by scanning the QR Code below...




348 Market Street Inn
Property Guide



Welcome to Market Street Inn Unit 348, "The Pilar House"! We want you to feel right at home and thoroughly enjoy your stay . As your host, **Beach Vacation DESTINATION** is at your service. Please call us at **(850) 420-6935** or email us at **info@MyBVD.com** immediately if you need assistance of any kind.

The following information is made available to you to enhance your stay with us, please read each item carefully to avoid any confusion.

1. **Parking** – You may park in the "Owners Parking Lot" located on the second floor by entering the parking garage code **at** the gate located at the bottom of the ramp to enter the garage. The code will be sent to you via email before your arrival.
2. **Access Codes** – You will receive an email before arrival with the subject line "Access Codes". One will be the entry code for the exterior doors of the Market Street Inn building. To use, simply enter the four digit code and open the exterior door. You will also be provided with a code for entrance to 348 Market Street Inn prior to arriving. This code is for the digital lock on the entry door to Market Street Inn #348. To use, touch the black screen in order to activate then, enter the four digit code followed by the  Symbol. A green light will flash at the top of the lock. Turn the handle to enter. The door will automatically relock itself in 30 seconds. The code is valid only for the duration of your stay.
3. **Check-In/Check-Out Times**- Check-In is at 4:00 PM CST and Check-out is at 10:00 AM CST
4. **WiFi** – On your device, select the network "348 guest" and enter the password "beachball" when prompted.
5. **Golf Cart** – This unit comes complete with a charcoal gray, 6-seater, Evolution D5-Ranger, golf cart that is at your disposal. The FOB is located on the kitchen bar counter, along with a copy of the golf cart rules for the Sandestin Resort. The cart is located in Golf Cart parking space #15. Take the elevator to the 2cd floor and enter the garage. After coming down the stairs, turn to your right and walk approximately 30 yards (towards the stairway to Baytowne Wharf), the golf cart will be in space 15 on the right. Use of the golf cart will be terminated if all of the following rules are not adhered to...
 - a. **No one under the age of 16 or not in possession of a valid driver's license may drive the golf cart.**
 - b. Do not exceed the passenger limit designated by the manufacturer, including children, at any time.
 - c. Children are not permitted to be held in the driver's lap.
 - d. Obey all of the rules of the road including speed limits and the "Golf Cart Operation Policy and Rules" of the Sandestin Owners Association.
 - e. YOU are required to pay for any citations issued to you, and/or your family, and/or your guests by Sandestin Security officers and/or Walton County Sheriff's Deputies.
 - f. Do not remove the golf cart from the Sandestin Resort Property at any time (the Grand Boulevard/Publix shopping center areas are, for the purpose of this agreement, considered part of the Sandestin Resort Property).
 - g. It is unlawful to drive any golf cart on HWY 98, the Sheriff's Deputies would stop you and impound the golf cart. You would be issued a citation, and you would be responsible for any expenses incurred to retrieve the golf cart.
 - h. The golf cart may not be utilized unless and until a liability waiver, signed by the guest, is in the possession of Beach Vacation DESTINATION along with a copy of the guest's driver's license and auto insurance card.
 - i. Failure to abide by the aforementioned RULES AND WARNINGS will result in termination of your ability to utilize the golf cart for the remainder of your stay.
 - j. Failure to return the golf cart FOB to the place where you received it upon your final departure, will result in a charge of \$50.00 to your account.
6. **Dishes and Utensils** - Please place all dishes and utensils that you have used in the dishwasher and start the dishwasher before your final departure.
7. **Disposing of Trash** – Upon final departure, please empty all trash receptacles by placing the tied bags in the dumpster carts located to your right as you enter the garage from the building.
8. **More Information** – Go to www.MyBVD.com and check out the **BVD Vacation Guide** to get information on favorite area restaurants, beaches, and activities such as Golf, Tennis, Fishing and more!

We hope you enjoy your stay! Please do not hesitate to contact us at **(850) 420-7529** or by emailing us at **info@MyBVD.com** if you have any questions.



A few tips for making the most of your visit...

Welcome to our little slice of paradise! We, at Beach Vacation DESTINATION, love Sandestin and the Emerald Coast, and we are sure you will too. As has been said, “experience is the greatest teacher”, so we wanted to share some tips, hard learned over time, that we hope will make your stay more enjoyable.

First, you should know that if you are here during spring break, the summer months, or a holiday weekend, you are here during the busiest, most crowded, and arguably best time of the year. That’s not necessarily a bad thing. It’s popular for a reason, right? It just takes a bit more planning to not let the crowds interfere with your enjoyment of your vacation.

Start with the beach. The beach gets pretty crowded during peak season. If you want to pick a great spot to set up, get there early. The crowds tend to start showing up after 10:00 A.M. so, show up before then to get a good spot. Alternatively, get there early and rent a chair/umbrella set-up from the resort. They do not accept reservations so, first come, first served.

Next, restaurants. Whether you’re dining within the resort or off property, reservations are your friend. Make reservations as early as possible (links available at www.MyBVD.com/restaurants), even before you arrive, and the more people in your party, the more lead time you will need. If you don’t have reservations or the restaurant you want to go to does not except reservations, try going during off-peak times, either a little earlier or a little later than normal. This will decrease the wait time.





Then, traffic. In peak season traffic can be horrible on the Emerald Coast. We highly recommend parking your vehicle when you get here and then using the golf cart as much as possible. You can go to Publix for groceries and choose from over 40 restaurants on the resort, including Grand Boulevard, only traveling by golf cart. When you venture out in your vehicle, leave early enough to get to your destination on time. The map apps such as Google Maps, Waze, Etc. have become pretty accurate at predicting travel times and providing the fastest routes.

Drive times in the morning and late afternoon/evening hours are the worst, so plan your trips accordingly. If you have dinner plans a distance away from the resort, pick an attraction you would like to visit near your dinner plan location and travel to that area before the drive time traffic picks up.

Whatever it is you want to do during your visit in the peak months (fishing charter, jet ski rental, trip to Crab Island, etc.), it's best to plan ahead, make early reservations when possible, and be aware of travel times to reach your destination.

Just as an FYI, our favorite months to enjoy the Emerald Coast are May, September, and October. The weather is a little milder, the water is warm enough to enjoy the beach and pools, you can get into just about any restaurant you want without long wait times, and there is much less traffic

Please do not hesitate to reach out to Beach Vacation DESTINATION, anytime, with any questions you may have. Whether it's something with the property that we need to attend to, or if you just want dining suggestions. You can reach us by calling/texting (850) 420-7529 or emailing Info@MyBVD.com.



- | | |
|--|------------------------------|
| Restaurants/Refreshments | Resort Golf |
| F Caffe Siena | A Baytowne Golf Club |
| F Fat Tuesday | I Burnt Pine Golf Club |
| E Marina Bar & Grill | A Raven Golf Club |
| D Sunset Bay Café | D The Links Golf Club |
| B The Beach House | |
| Resort Relations | Recreation/Relaxation |
| A Sandestin Welcome Center | E Baytowne Marina |
| Guest Registration | C Beachside Green |
| A SRE (Sandestin Real Estate) | E Bike Station |
| D G ATM | D Fitness Center |
| G Baytowne Conference Center | D Club KZ |
| D G Business Center | D Spa Sandestin |
| A G Guest Registration | E Tennis Center |
| D Linkside Conference Center | C The Dunes Putting Course |
| H Sandestin Executive Health and Wellness Center | |
- Designated *Resort Guest* Pools

RESORT MAP

The Village of Baytowne Wharf at SANDESTIN

The Village of Baytowne Wharf is a unique collection of specialty merchants ranging from quaint boutique shops and charming eateries to lively nightclubs - all set against a backdrop of vibrant special events.

You Are Here



Beach Safety for Sandestin

Sandestin adheres to a uniform code system for swimming safety that is also presently used in Walton County. The flag colors and their meanings are as follows:

- Green** - Conditions are favorable for swimming.
- Yellow** - Use caution when venturing into the water.
- One Red** - Swimming not advised. Knee high, too high.
- Two Red** - Water is closed to public use, subject to fine.
- Purple** - Marine pests present (jellyfish, stingrays or dangerous fish)

348 Market Street Inn



Gulf of Mexico


DESTIN

Emerald Coast Parkway/US Highway 98

PANAMA CITY

Beach Safety

 **Water Closed to Public**
Agua Cerrada al Público

 **High Hazard**
High Surf and/or Strong Currents
Peligro Alto, Resaca Alta y/o Corrientes Fuertes

The white sand beaches and beautiful clear waters of the Emerald Coast are so beautiful and inviting that it is sometimes hard to remember that they can be dangerous as well. Beach Vacation DESTINATION wants you to have a safe and enjoyable visit to the Emerald Coast, so please take a moment to familiarize yourself, and those with you, with our Beach Flag Warning System, Beach Rules, and Rip Current info.

BEACH FLAG WARNINGS

 **WATER CLOSED TO PUBLIC**
Water Activity is Prohibited*

 **HIGH HAZARD**
High Surf and/or Strong Currents

 **MEDIUM HAZARD**
Moderate Surf and/or Currents

 **LOW HAZARD**
Calm Conditions, Exercise Caution

 **STINGING MARINE LIFE**
Man O' War, Jellyfish, Stingrays

TEXT "SAFETY" TO 31279 FOR CURRENT CONDITIONS

Entering the Gulf during double red flag conditions can result in a \$500 fine and criminal charges.

BEACH RULES

Violation of beach rules may result in fines or penalties per Walton County municipal code.

- **Leave No Trace.** Overnight, unattended items will be removed.
- **Glass Containers, camping and charcoal grills are prohibited** (Propane grills must be smaller than 225 sq. inches)
- **Vehicles, dogs and fires all require permits**
- **Solicitation prohibited**
- **Stay off dunes**
- **Removal of vegetation, sand or Gulf water prohibited**
- **Please allow a 15 ft setback from dunes and water's edge for emergency vehicles**
- **To prevent crowding, tents larger than 10'x10' are prohibited, and all tents are limited to the top 1/2 of open beach.** 4-foot walkway between tents, except Grayton Beach.
- **No metal shovels allowed.** Large holes create dangerous situations for beachgoers and marine life
- **Fill in holes dug in sand.** Holes cannot be larger than 3 feet x 3 feet and no deeper than 2 feet. Holes cannot be left unattended.
- **No littering, nudity, or excessive noise**

GO TO WWW.VISITSOUTHWALTON.COM FOR MORE INFO

We want you to enjoy our beautiful beaches! By following the above rules you can help ensure the enjoyment of everyone.

For More Information, go to www.MyBVD.com/beach-safety





Use of the Golf Cart

This unit comes complete with a charcoal gray, 6-seater, Evolution D5-Ranger, golf cart that is at your disposal. The FOB is located on the kitchen bar counter, along with a copy of the golf cart rules for the Sandestin Resort.

The cart is located in Golf Cart parking space #15. Take the elevator to the 2cd floor and enter the garage. After coming down the stairs, turn to your right and walk approximately 30 yards (towards the stairway to Baytowne Wharf), the golf cart will be in a space on the right. Space #15 is the center space of the three spaces adjacent to the steps that lead from the garage to Baytowne Wharf.

The golf cart has a meter that tells you the amount of charge remaining. It is highly recommended that you return to the garage and plug in the charger once the meter reads less than 50% charge. You should plug the charger into the cart anytime it is parked in its space.

Only park the golf cart in space #15 when returning to the garage and only park in approved golf cart parking spaces when parking elsewhere on the resort. Failure to follow these instructions could result in you receiving a ticket, the cart being tire tagged, or the cart being towed away. You will be responsible for any expenses associated with the former listed penalties for improper parking.

Use of the golf cart will be terminated if all of the following rules are not adhered to...

- a. **No one under the age of 16 or not in possession of a valid driver's license may drive the golf cart.**
- b. Do not exceed the passenger limit designated by the manufacturer, including children, at any time.
- c. Children are not permitted to be held in the driver's lap.
- d. Obey all of the rules of the road including speed limits and the "Golf Cart Operation Policy and Rules" of the Sandestin Owners Association.
- e. YOU are required to pay for any citations issued to you, and/or your family, and/or your guests by Sandestin Security officers and/or Walton County Sheriff's Deputies.
- f. Do not remove the golf cart from the Sandestin Resort Property at any time (the Grand Boulevard/Publix shopping center areas are, for the purpose of this agreement, considered part of the Sandestin Resort Property).
- g. It is unlawful to drive any golf cart on HWY 98, the Sheriff's Deputies would stop you and impound the golf cart. You would be issued a citation, and you would be responsible for any expenses incurred to retrieve the golf cart.
- h. The golf cart may not be utilized unless and until a liability waiver, signed by the guest, is in the possession of Beach Vacation DESTINATION along with a copy of the guest's driver's license and auto insurance card.
- i. Failure to abide by the aforementioned RULES AND WARNINGS will result in termination of your ability to utilize the golf cart for the remainder of your stay.
- j. Failure to return the golf cart key to the place where you received it upon your final departure, will result in a charge of \$50.00 to your account.

Before Departure, please remove all trash from the golf cart and wipe down any spills or messes that you may have accidentally created. Thank you.



SANDESTIN OWNERS ASSOCIATION, INC.
GOLF CART OPERATION POLICY AND RULES
(Excerpts applicable to Guests)

- 1) Golf carts may be driven only on the SOA common roadways and may not be operated on any sidewalk or path that is not specifically designated for such, with the exception of the Highway 98 tunnel and its access points.
- 2) All golf cart operators shall abide by all traffic control devices.
- 3) While operating on the Property, drivers must be at least 16 years of age and have in their possession a valid automobile operating license.
- 4) The number of passengers per cart must not exceed the passenger limit and load capacity designated by the vehicle's manufacturer. All persons are required to be seated in an installed seat specifically designed for such, during the operation of the golf cart and are not permitted to stand up or be seated upon the body or framework.
- 5) Operation of the golf cart while under the influence of intoxicants is prohibited and may be subject to prosecution pursuant to Chapter 316.193 of the Florida Statutes.
- 6) INFANTS AND SMALL CHILDREN ARE ESPECIALLY AT RISK AND SHOULD BE SECURED AT ALL TIMES BY ANOTHER GOLF CART PASSENGER AGE 16 OR OLDER. THE DRIVER MAY NOT HOLD A CHILD OR INFANT WHILE OPERATING A CART. PLEASE NOTE THAT IN GENERAL MOST GOLF CART MANUFACTURERS DO NOT RECOMMEND THE USE OF SEAT BELTS OR TRADITIONAL CAR SEATS FOR CHILDREN AND ESPECIALLY INFANTS. DRIVERS NEED TO BE FULLY AWARE OF THE MANY SAFETY RISKS TO CHILDREN WHILE OPERATING GOLF CARTS.
- 7) The driver may not hold an animal or an object in a manner that impairs vision or ability to safely operate.
- 8) Parking of golf carts is limited to golf cart approved spaces. If unavailable, carts may only park in areas designated for vehicle parking.
- 9) No golf cart shall transport baggage, coolers, or other objects on the roof or any other portion of the golf cart without a designated rack designed for that purpose, or without objects being adequately secured to the cart.
- 10) Towing or dragging a wagon, cart, bicycle, or skateboard whether occupied or unoccupied is prohibited.
- 11) Racing or other activities that could pose a hazard to the driver, occupants, others, or property is prohibited and may be subject to traffic violations in addition to a violation of this policy.
- 12) In the event that a Security Officer encounters a violation of the Rules set forth herein, that Security Officer may address the violation and at their discretion issue a traffic citation.
- 13) Any violation of the above rules shall result in possible penalties and a fine of \$100 in accordance with this policy.

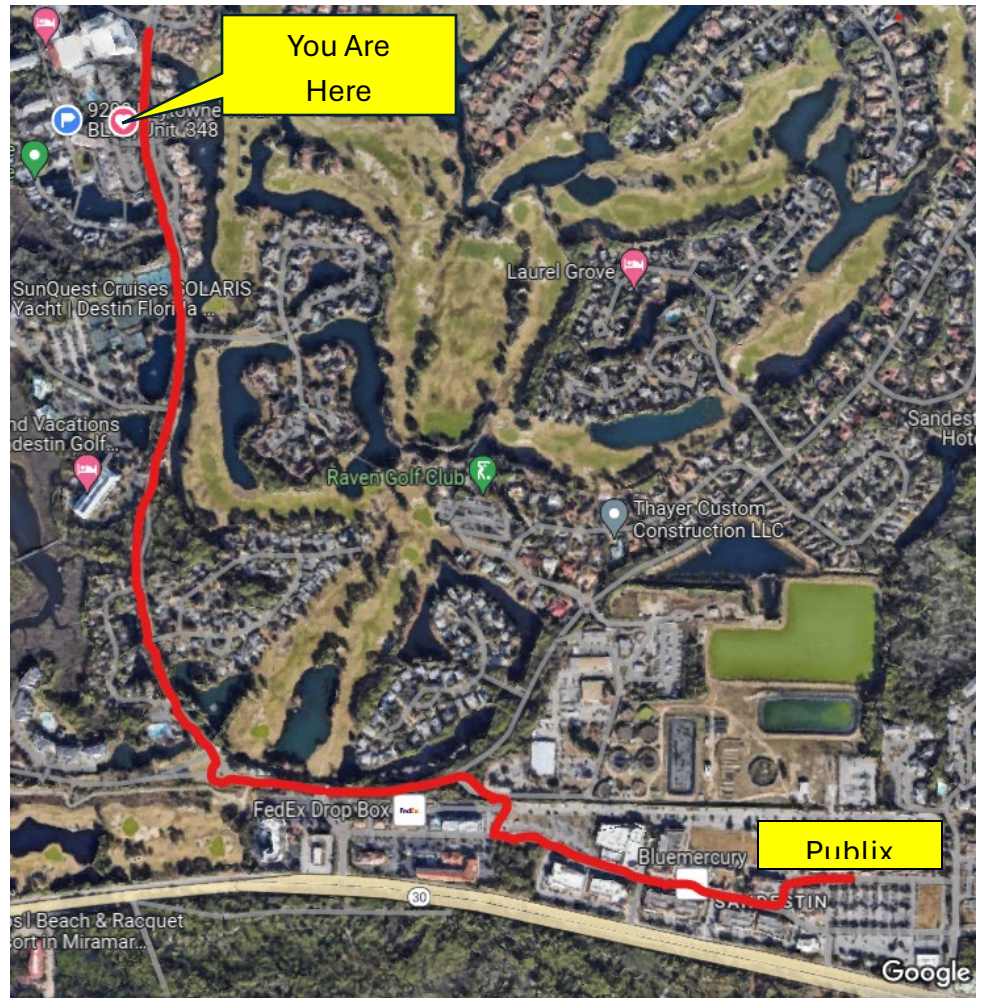
If you have any questions about, or need clarification of, any of the above rules, please contact **Beach Vacation DESTINATION** by email, Info@MyBVD.com or by phone, **(850) 420-7529**.

This document was prepared by BVD Property Management, to review the entire Sandestin Owners Association Golf Cart Operation And Rules document, please contact the Sandestin Owners Association at (850) 424-5950.

How to get to Grande BLVD/Publix in the golf cart.

Turn-By-Turn Instructions...

1. Turn right onto Baytowne Wharf Boulevard as you exit the parking lot of Baytowne Wharf.
2. Continue south on Baytowne Wharf Boulevard until you enter the roundabout. Take second exit in roundabout to continue east on Baytowne Wharf Boulevard.
3. Stop at stop sign and continue straight across. Take first right onto Administration Drive.
4. Travel approximately 150 yards on Administration Drive until you see a golf cart gate on your right.
5. Proceed through the golf cart gate and come to a complete stop (gate will open automatically).
6. Bear to the right but straight across and come to a stop at the intersection with Grand Boulevard.
7. Turn left onto Grand Boulevard and travel until it ends in the Publix parking lot. You will find golf cart parking at the very front across from the Craft Bar.

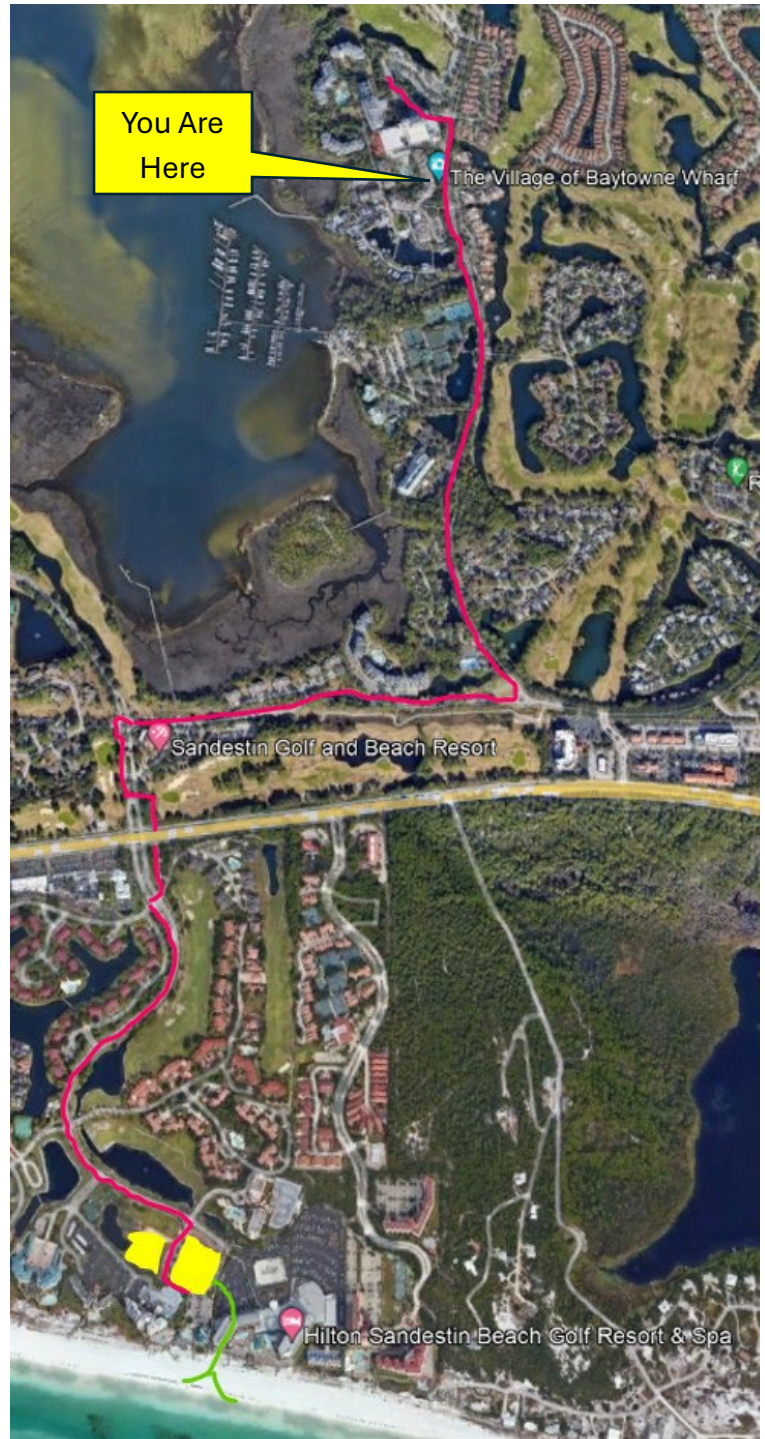


NOTE: You can view these instructions on your phone by scanning the QR Code on page 1 of this guide.

How to get to the beach in the golf cart...

Turn-By-Turn Instructions

1. Take a right onto Baytowne Wharf Boulevard as you exit the Baytowne Wharf parking lot. Continue to the roundabout.
2. Take first right in round about onto Heron Walk Drive. Continue to the second roundabout.
3. Take third exit in roundabout onto Sandestin Boulevard. Continue past guard shack and then take first left after guard shack, towards welcome center (DO NOT proceed to traffic light).
4. As you start into the entrance of the welcome center, you will cross a paved golf cart path. Take a right onto the golf cart path which will lead you into a tunnel that goes under the Emerald Coast Parkway (HWY 98)
5. After exiting the tunnel, the golf cart path will intersect with Sandestin Boulevard. Take a left onto Sandestin Boulevard.
6. Continue southward on Sandestin Boulevard until you see a large gravel parking lot on your right. You may park in this parking lot in any of the golf cart parking spaces.



NOTE: You can view these instructions on your phone by scanning the QR Code on page 1 of this guide.



BAYTOWNE WHARF DINING

"All Just steps from your door!"

5 o’Clock Somewhere

Bar & Grill
(850) 308-2458

Cannery Lane Cantina

Mexican/Caribbean
(850) 424-6934

Charlies Cafe

Donuts, Sandwiches, Salads Coffee
(850) 424-6459

Cosmo’s Robo Diner

Burgers, Chicken, Shakes
(850) 842-7078

Dude & Meatballs

Italian Bar & Restaurant
(850) 424-7775

Fat Tuesday Daiquiri Bar

Frozen Drinks
(850) 351-1809

Hammerhead’s Bar & Grille

Fried & Steamed Seafood, Burgers
(850) 351-1997

Village Door Restaurant

BBQ/Seafood
(850) 610-5959

La Cremeria

Gelato, Italian Ice, Milk Shakes, Coffee

LandShark Bar & Grill

Seafood, Burgers, Sandwiches
(850) 308-2458

Moo La-La

Ice Cream & Deserts
(850) 654-3333

Poppy’s Crazy Lobster

Seafood, Creole/Cajun
(850) 351-1996

Roberto’s Pizzeria

Pizza, Calzones, Salads
(850) 351-1998 (Delivery Available)

Ruby Slipper

Brunch, Bennies, Mimosas
(850) 660-7200

Rum Runners

Piano Bar, Full Menu
(850) 351-1817

Slick Lips

Seafood & Oyster House
(850) 347-5060

The Green Panini

Healthy, Paninis, salads, smoothies
(850) 708-5215

Tony Larue’s

Snoballs
(850) 424-6934

Yaki

Asian, Hibachi, Sushi
(850) 353-2200

For more local dining options and a list of local’s favorites go to www.MyBVD.com/restaurants





There is a beautiful pool, hot and cool tubs, fitness center, gas grills, lawn and seating area with outdoor fireplace, all for your enjoyment located just down the hall and through the glass doors beyond the elevator. Please be certain to wear the provided wrist bands while taking advantage of these amenities.

Pool Rules

- No lifeguard is on duty, swim at your own risk
- Wristbands, located on the kitchen counter at your arrival, must be worn at all times
- Pool is for the use of Gateway owners and their guests/renters only
- Pool is open from 8:00 A.M. to 10:00 P.M.
- See signage at pool for additional rules



Directory

Beach Vacation DESTINation (850) 420-7529 (Call/Text)

Emergency 911

Walton County Sheriff's Office (850) 892-8111

Walton County Fire Rescue (850) 892-8111

Sandestin Security (850) 267-5000 (24 HR)

Ascension Sacred Heart Hospital ER (850) 278-3000 (24 HR)

Useful Websites...

Beach Vacation DESTINation Main Page www.MyBVD.com

Beach Vacation DESTINation Vacation Guide www.MyBVD.com/bvd-vacation-guide

Beach Vacation DESTINation Dining Guide www.MyBVD.com/restaurants

Baytowne Wharf Events [www.BaytowneWharf.com/what to do.php](http://www.BaytowneWharf.com/what_to_do.php)

