

NEO» | HiCITY  
BY EULER

# Range Mein Kamaal, Chale Saalon Saal



170+ km\*



RealRange™

Industry Best

13% More

10-15% Spacious Cabin

(Certified Range **237 Km\***) **13.44 kWh** Battery

Thick Metal Body

for Driver and Passenger



Reinforced body for  
Indian road conditions



Vehicle Warranty  
5 years / 1.25 Lakh\*



3.3 kW@  
On-board charger



72 Nm Super  
torque power



\*The range stated is for HiCITY MAXX.  
\*RealRange™ may differ according to driving conditions.  
@3.3 kW onboard charger is available only in HiCITY MAXX.  
\*Conditions apply.



More than ₹10,000\* profit every month



Battery warranty up to 6 years / 1.5 lakh Km<sup>^</sup>



8 free services for up to 50,000 Kms with 24/7 road side assistance (RSA)



Scan to QR Code  
Visit Our Website



☎ 1800 1238 1238 (Toll Free Number)

🌐 [www.neo.eulermotors.com](http://www.neo.eulermotors.com)

Official Address: A-39, Near Pocket C, Block B,  
Mohan Cooperative Industrial Estate, Badarpur,  
New Delhi - 110 044.

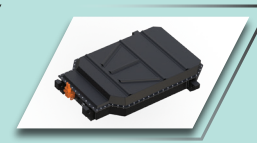
Dealership Stamp



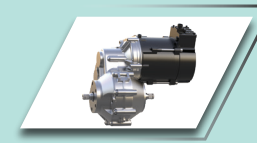
Shepherd App



Skateboard Chassis



Lithium Ion Battery



Advance PMSM Motor



PRCD On-board Charger

## NEO HiCITY MAXX

<b>Performance</b>	
ICAT Certified Range	<b>237 Km*</b>
Real Range <sup>TM**</sup>	<b>170+ Km*</b>
Maximum Speed	<b>45 Km / Hr (Range Mode)   60 Km / Hr (Thunder Mode)</b>
Charging Time <sup>#</sup>	<b>3 hrs 25 mins (10%-80%)</b>
On-board Charger (Power)*	<b>3.3 kW</b>
On-board Charger	Plug and play charging gun. No additional steps or components.
<b>Battery Powerpack</b>	
Pack Voltage (Nominal)	<b>67 V</b>
Energy	<b>13.44 kWh</b>
Battery Warranty <sup>^</sup>	<b>6 years / 1.5 Lakh Km + (1 year / 25k Km<sup>^</sup>)</b>
Battery Type / Location	Lithium-ion battery / Chassis integration
<b>Specification</b>	
Seating Capacity	D + 3
Ground Clearance	240 mm
Track Width	1270 mm
Wheelbase	2185 mm
Gradeability	22%
Overall Length	2900 mm
Overall Width	1465 mm
Overall Height	1920 mm
Kerb Weight	640 kg
Gross Vehicle Weight	930 kg
<b>Motor</b>	
Type	PMSM
Power (peak)	11 kW
Torque (peak)	72 Nm
<b>Brake systems</b>	
Type	Hydraulic   Single Pedal Actuation
Front	Disc Brake
Rear	Drum Brake
<b>Suspension systems</b>	
Front	Hydraulic shock absorber with helical spring
Rear	Trailing arm with hydraulic shock absorber with helical spring
Drive Modes	RANGE   THUNDER
Regenerative Braking	✓
Vehicle Tracking System	✓
Water and Dust Proof Battery (IP67)	✓
Water Wading Height	1 Foot
Head Lights	Integrated Projector Headlamps
Tyres	Radial Tubeless: 145/80 R12
Vehicle warranty	5 years / 1.25 Lakh Km <sup>§</sup>

**Real Range<sup>TM</sup>:** Real Range means the distance your electric vehicle can travel on a full charge under normal conditions. This distance is an estimate based on actual usage conditions.

\*Certified range is always higher than Real Range because it is tested under controlled laboratory conditions (IDC method) with light load and controlled driving.

\*\*Normal conditions include factors such as vehicle speed and braking rate, battery health, road and traffic conditions, weather, and temperature. All these affect the vehicle's range.

<sup>#</sup>Charging time depends on output voltage.

<sup>^</sup>Apart from the standard warranty on battery, customers can avail an extended warranty of 1 year / 25,000 Km.

<sup>\*</sup>The distance is based on actual usage conditions (Driver + 3 passengers and Median driving conditions).

<sup>§</sup>Conditions apply.

<sup>'</sup>As compared with ICE Vehicle.