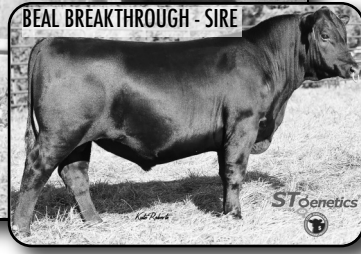




LOT 61 Woirhaye Ranch

Ryan Woirhaye
2952 Old Darby Rd. • Darby, MT 59829

- Beal Breakthrough (AAA 19829112) x Woirhaye Blackcap Empress 2109 (AAA 20120262)
- Woirhaye Blackcap Empress 2109 had an actual BW of 92 lbs and a Weaning Ratio of 112.
- The grandam, 1755 (AAA 18965960), boasts an impressive production record, including a Calving Interval of 376 days, a Birth Ratio of 105 for 5 calves, a Weaning Ratio of 110 for 5 calves, and a Yearling Ratio of 114 for 5 calves. She is the Dam to the Number 2 performing bull at the Midland Bull Test in 2021 - Woirhaye Jet Setter 0755, as well as the Low-Birth-Weight Champion Bull and Low Birth Weight Average Daily Gain.
- 1755 is an outstanding feature donor in our program while remaining within our herd breeding schedule. She produces very feminine females and bulls that you will want to keep as herd sires with tremendous phenotype. 1755 and her offspring have displayed excellent foot structure, beautiful udders, highly maternal females, and breed-leading feed efficiency. This is one of the best genetic prospects in our program, and we appreciate the added docility that 1755 has stamped into our herd. We believe Woirhaye Blackcap Empress 2303 will become a great female in the Angus Breed, and we look forward to seeing her success in your program.
- Beal Breakthrough offers an exceptional spread in his EPD package. This ST Genetics sire is poised to make positive impacts on EPD values. He ranks in the top 1% for RE, \$B, \$W, \$G, \$C, \$AxH, and \$AxJ, as well as the top 2% for CED, MB, and \$M, and the top 3% for YW. He also ranks in the top 4% for WW.



LOT 61 Woirhaye Blackcap Empress 2303

BD: 01/06/2023 Reg: *20618766 Tattoo: 2303
 G A R PROPHET K263
 BEAL BREAKTHROUGH AAA +*19829112
 H P C A SURE FIRE S6

JINDRA CRUISER
 Woirhaye Blackcap Empress 2109 AAA *20120262
 M A R BLACKCAP EMPRESS 1755
 G A R PROPHET
 CHAIR ROCK 5050 G A R 1131
 G A R SURE FIRE
 H P C A INGENUITY A372
 JINDRA MEGAHIT
 JINDRA STOCKQUEEN J 837 011
 PA FORTITUDE 2500
 SJH BLACKCAP EMPRESS B013

CED	BW	WW	YW	Milk	Marb	RE	\$M	\$W	\$F	\$B	\$C
+9	+1.2	+74	+139	+27	+1.07	+1.11	+87	+69	+94	+178	+318

LOT 62 Woirhaye Lucy 2309

BD: 01/09/2023 Reg: *20630771 Tattoo: 2309
 BAR R JET BLACK 5063
 Woirhaye Jet Setter 0755 AAA *19769532
 M A R BLACKCAP EMPRESS 1755

SD TEN SPEED 2933-8657 W
 Woirhaye Lucy 0867 AAA *19762522
 M A R LUCY 1867
 CONNEALY BLACK GRANITE
 BAR R IRIS ANITA 0113
 PA FORTITUDE 2500
 SJH BLACKCAP EMPRESS B013
 S A V TEN SPEED 3022
 R B LADY 7125-2933
 SPRINGFIELD TEN X 5022
 M A R LUCY 1536

CED	BW	WW	YW	Milk	Marb	RE	\$M	\$W	\$F	\$B	\$C
+8	+1.1	+77	+141	+26	+0.84	+0.67	+60	+71	+92	+158	+265



LOT 62 Woirhaye Ranch

Ryan Woirhaye
2952 Old Darby Rd. • Darby, MT 59829

- 0867 boasts a Birth Ratio of 2 calves at 109.
- The grandam, 1867 (AAA 19254185), has an impressive record with a Birth Ratio of 108, a Weaning Ratio of 103, and a Yearling Ratio of 100. 1867 is an exceptional feature donor in our program, while remaining within the herd's breeding schedule. She possesses excellent foot structure, a perfect udder, a feminine phenotype, and a massive base of width and length of spine that will yield productive females in any breeding program. Currently, she is raising twin bulls unassisted, and they will be a part of the Midland Bull Test for the 2023 season.

