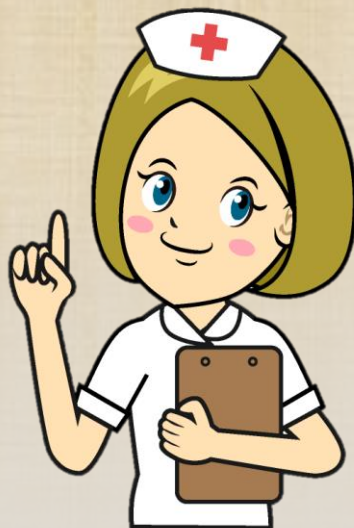




ARO AUSTRALIAN TRAINING ACADEMY



IQNM, APHRA (NMBA) Registration for Australia Registered Nurse



Content

Service Introduction

Pre-requisites

Documents Checklist

Course Modules

Process Flow Chart

Contact Information



Service Introduction

We provide services for overseas registered nurses' journey from application to registration, including NCLEX and OSCE preparation programs under the OBA (Outcomes-Based Assessment) pathway.

To start working as a Registered Nurse in Australia, you must apply for registration with the Nursing and Midwifery Board of Australia (NMBA).

Australian Health Practitioner Regulation Agency (AHPRA) works with the NMBA to provide various services to Internationally Qualified Nurses and Midwives. Hence, applying to AHPRA is the first step toward achieving your dream Australian Nursing Career.

The NMBA works with the Australian Health Practitioner Regulation Agency to regulate the nursing profession.

The average **registered nurse** salary in **Australia** is **\$82,722** per year or **\$42.42** per hour. Entry-level positions start at **\$77,386** per year, while most experienced workers make up to **\$110,307** per year.



Pre-requisites

1. Completed minimum BSc Nursing or Higher
2. English Proficiency Required (During final AHPRA License registration)
3. Experience is not required
4. Male or Female can apply

* English

- IELTS - Overall score of at least 7 with a minimum score of 7 in each band
- PTE - Overall score of at least 65 with a minimum score of 65 in each of the 4 parts.
- OET – Minimum B in each Section

Remark: The score can be combined in 2 sitting within 6 months.



Documents Checklist

Document Checklist:

- 1.1 Passport
- 1.2 Birth Certificate
- 1.3 National ID
- 1.4 Name Change Document (If necessary)

- 2.1 Degree
- 2.2 Transcript / Mark Sheet
- 2.3 Letter of Completion
- 2.4 Employer Statement
- 2.5 Pay Slip (If required)
- 2.6 English Proficiency (Required during Final AHPRA License Registration)

- 3.1 Medical Check Up (Will be advised when required)
- 3.2 Police Clearance (Will be advised when required)

You must be prepared to provide a police certificate from each country you have lived in for 12 months or more during the past 10 years after you turned 16 years of age. Don't arrange for police certificates until we ask you to.

- Remarks:
- 1. Non-English documents must be translated to English by Certified Translator.
 - 2. All documents must be scanned in colour.

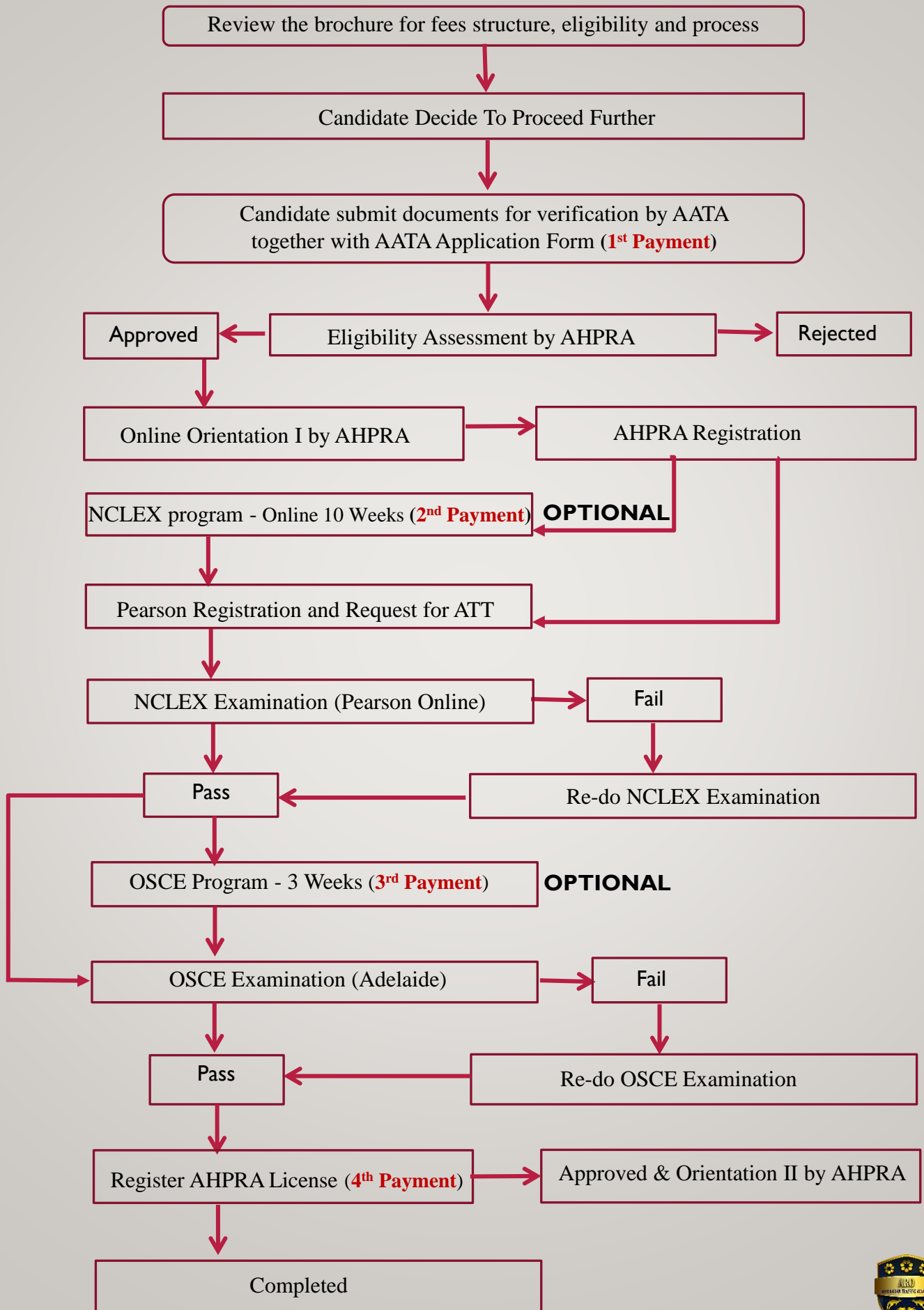


Course Modules

Details	NCLEX (Instructor led)	OSCE
Duration	10 weeks	3 weeks
Mode	Online	Online - 2 weeks Face to Face - 1 week
Class Schedule	Monday to Wednesday - Self Paced (Students need to study using our pre-recorded lectures, question banks, and resources in our LMS) Thursday to Friday- Live class (4:30pm to 7:30pm AEST) If unable to attend the live class, you will be provided with the recording of the live class for your review.	Online- Monday to Friday (6:00pm to 8:30pm AEST) Face to Face- Monday to Friday 8:00 am to 5:00pm AEST
Location	Online (join from anywhere)	Online Class- (Join from Anywhere) Face to Face- Sydney, Melbourne, Brisbane, Adelaide,
Access	All access to recordings and resources for 1 year from the date of enrollment.	Unlimited opportunity to attend online, face-to-face classes and access to resources
Recordings	Class recordings are made available	Recordings available
Intakes	Monthly	Monthly
Key Features	<ul style="list-style-type: none"> Experienced Australian Nursing professionals and international NCLEX reviewers as faculty NCLEX RN Online books Question banks on our LMS with more than 15000+ NCLEX RN practice questions. Lecture handouts Weekly NCLEX RN assessment exams Predictor/Mock exams Personal student-trainer feedback sessions Individual NCLEX practice platform 	<ul style="list-style-type: none"> Learning portal with procedures and cheat sheet. Competency and Readiness skill exam to check your competencies. Experienced Australian Educators with 15-20 years of clinical experience. State of the art lab in Sydney, Melbourne, Brisbane, Adelaide and Perth Exclusively designed OSCE-RN handbook



Process Flow Chart



Contact Information

Office address	Ground Floor, 470 Saint Kilda Road Melbourne Victoria 3004 Australia
Phone	+61 448 758 300
WhatsApp	<u>+61 466 244 901</u>
Email	<u>info@aroacademy.com.au</u>
Website	<u>http://www.aroacademy.com.au</u>

