



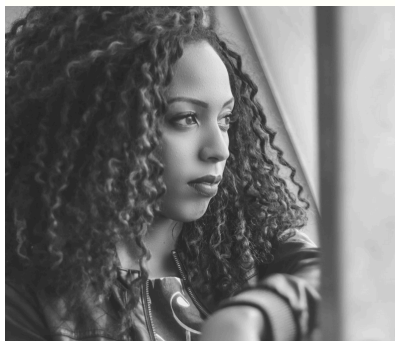
HERB MEDICAL  
*Consulting*

Patient Guide

# PATIENT INFORMATION

---

Congratulations on taking the next step in your cannabis journey. You may log in and check the status of your application with the credentials below. Please allow up to 10 business days for application to be processed.



MS-DOH PORTAL LOGIN:

[www.mmcp.ms.gov/login](http://www.mmcp.ms.gov/login)



Username: (your email address)

Password: \_\_\_\_\_

## NEXT APPOINTMENT

Date: \_\_\_\_\_

Time: \_\_\_\_\_

## ALLOTMENT

Units/30 day: \_\_\_\_\_

RESTRICTIONS \_\_\_\_\_

1 unit = 3.5g flower or

1g concentrate or

100mg infused products

---

MS-DOH (601) 206-1540  
[mcregistration@msdh.ms.gov](mailto:mcregistration@msdh.ms.gov)

## FREQUENTLY ASKED QUESTIONS

---

### How do I download my card once it has been approved?

Log into your MS-DOH portal account using the information on the previous page. Once signed in you will click on “Print Digital Card” to download your electronic license.

### What if I am unable to make my own purchases?

If you are unable to make your own purchases due to health issues you may designate a caregiver. Please contact our office and request a caregiver packet.

### Will my cannabis license effect my job?

Your employer has the authority to either approve or reject your medical cannabis license. This is particularly common in industries that prioritize safety standards in their daily operations. It’s advisable to consult with your employer before acquiring a license. It does NOT currently interfere with any government benefit programs including VA or disability.

### Will my cannabis license be valid in another state?

Your cannabis license will not be recognized in other states.

However, some states do provide reciprocity for visiting patients. Before traveling out of state, you must apply for the appropriate licensing.

---

# WHAT IS CANNABIS

Cannabis by definition is a psychoactive drug derived from the Cannabis sativa and indica plants. It contains over 500 known compounds including various cannabinoids and terpenes. All of these compounds in the plant working together is referred to as the entourage effect.

## CANNABINOIDS

The chemicals within the cannabis plant that bind to our endocannabinoid system are cannabinoids. There are currently over 100 identified cannabinoids in the cannabis plant. These chemicals will be present in different levels depending on the strain or type of product.

## TERPENES

Terpenes are unsaturated hydrocarbons that are found in the essential oil of plants and flowers. So far, over 200 terpenes have been found in cannabis, but they are also found in other plants. Terpenes are known for the smell and flavor that they bring to a particular strain, but these small particles are just as responsible for the effects of cannabis as the previously discussed cannabinoids. Although terpenes are not psychoactive they do alter the way our body utilizes THC.

---







# PRIMARY CANNABINOIDS

---

## Tetrahydrocannabinol(THC)

THC is the main psychoactive compound in cannabis. THC binds primarily to our CB1 receptors.

Potential Benefits:

- Pain relief
- Anti-nausea
- Appetite stimulation
- Anti-seizure
- Anti-anxiety
- Anti-insomnia
- Anti-inflammatory

## Cannabidiol(CBD)

CBD is the most abundant non-psycho-active cannabinoid in cannabis. CBD mostly binds to our CB2 receptors.

Potential Benefits:

- Pain relief
- Anti-nausea
- Anti-seizure
- Anti-anxiety
- Anti-inflammatory
- Neuroprotective
- Anti-cancer

---

## Cannabigerol(CBG)

CBG is found in high concentrations in young plants and often converts to other cannabinoids as the plant ages.

CBG benefits are similar to CBD with a slightly more uplifting and energizing effect

## Cannabinol(CBN)

CBN is formed when THC breaks down. CBN is psychoactive but to a lesser degree than THC. Known for its sedative effects.

Potential benefits include anti-insomnia, pain relief, and neuroprotectant properties.

# PRIMARY TERPENES

---

## Myrcene

The most prevalent terpene found in cannabis is celebrated for its soothing and tranquil effects. This aromatic compound graces not only hops but also cannabis, lemongrass, verbena, and bay.

Its benefits include:

- Analgesic
- Sedative
- Anti-diabetic
- Antioxidant
- Anti-inflammatory
- Antibacterial
- Anti-cancer

## Carophyllene

This terpene exudes a woody, spicy aroma often found in pepper, believed to amplify the pain-relieving and anti-inflammatory properties of THC.

- anti-inflammatory
- analgesic
- anti-diabetic
- antioxidant
- neuroprotectant
- antidepressant
- anti-cancer

---

## Pinene

As its name suggests, pinene enchants the air with a fragrant, woody aroma reminiscent of lush pine forests. This aromatic wonder can also be discovered within various medicinal plants, bestowing upon us a treasure trove of benefits:

- anti-inflammatory
- analgesic
- anticonvulsant
- antioxidant
- neuroprotectant
- antidepressant

## Linalool

Linalool, with its captivating floral fragrance, is most notably cherished by lavender. It is little wonder that this delightful essence inspires tranquility, yet its magic unfolds far beyond a leisurely siesta:

- Anti-inflammatory
  - Analgesic
  - Anxiolytic
  - Antioxidant
  - Neuroprotectant
  - Antidepressant
-

# PRIMARY TERPENES

---

## Humulene

Humulene is known for its earthy, spicy aroma. Besides cannabis it can often be found in hops and ginseng. Its benefits include:

- Antimicrobial
- Antibacterial
- Appetite suppressant

## Limonene

Limonene is most often found in citrus fruits so it's no surprise it has a fresh lemon smell and flavor.

- mood enhancement
- antimicrobial
- anti-inflammatory
- antioxidant
- anti-cancer

---

## Ocimene

Ocimene has a signature sweet citrusy scent. Not as common in cannabis but can often be found in mint and bay leaves. Benefits can include:

- anti-inflammatory
- antimicrobial
- mood enhancer
- insect repellant

## Terpinolene

Terpinolene is a less common terpene with a mildly uplifting yet sedating effect. It has a deep woody yet sweet smell.

- Anti-inflammatory
  - sedating
  - uplifting mood
  - Antioxidant
  - antimicrobial
  - aroma therapy
-

# PRODUCT INFORMATION

---

## EDIBLES

Edibles are food items infused with cannabis extracts. Since the onset time can differ from person to person, we suggest waiting up to two hours after each dose before considering another. The psychological effects of cannabis can be significantly more intense when taken orally, which is why we recommend a low and slow approach.

Initial dosing guidelines are between 2.5 and 5 mg of THC with at least a 4:1 ratio of CBD

## TINCTURES

Tinctures are potent liquid extracts created by immersing cannabis in a solvent. Because they are in liquid form, they typically provide a faster onset compared to edibles as well as more precise dosing.

Initial dosing: 2.5-5mg with at least a 4:1 ratio of CBD:THC

## TOPICALS

Topicals are cannabinoid-infused products meant for direct application on the skin. They provide relief from nerve and muscle pain without causing any psychoactive effects. These topicals can come in various forms, including oils, creams, lotions, or balms.

---



## DISPENSARY INFORMATION

---



BRAGG  CANNA

— SOUTHERN SKY —

*Wellness*<sup>TM</sup>





# Notes





HERB MEDICAL  
*Consulting*

## CONTACT US

2785 MS-145, Saltillo, MS 38866

662-269-2532

[records@nemsherbal.com](mailto:records@nemsherbal.com)

[www.theherbmedical.com](http://www.theherbmedical.com)