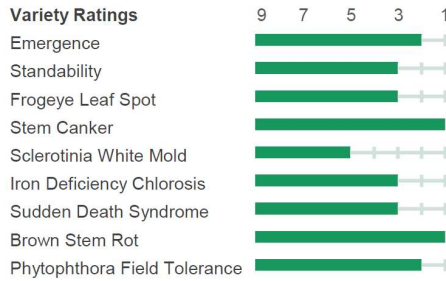
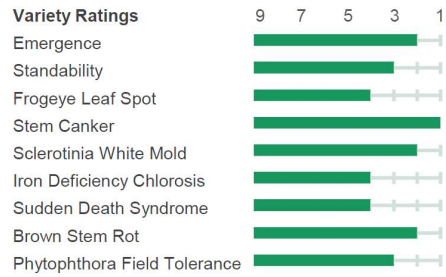


XO 1632E



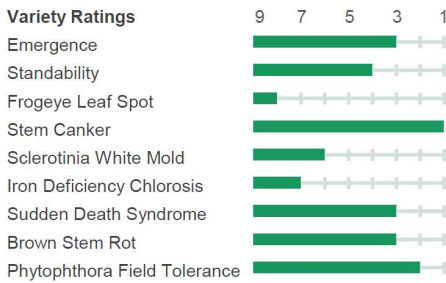
Comments for Optimum Performance:
 Top End Yield Potential – Fits most acres
 Offensive – Mod. to High Branching (Mid VPI)
 Planting Population Range – 140 to 165K

XO 1761E



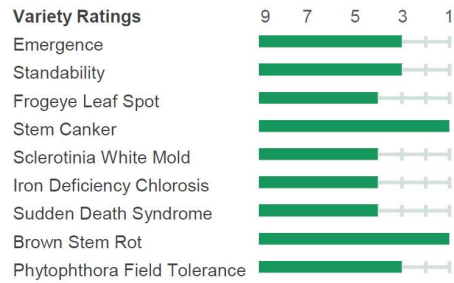
Comments for Optimum Performance:
 Tough, challenging acre & SWM Specialist
 Defensive – Main Stem focused (Low VPI)
 Planting Population Range – 150 to 175K

XO 1822E



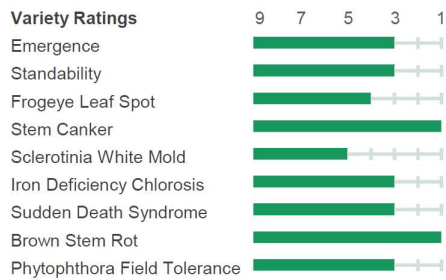
Comments for Optimum Performance:
 Top Yields for the most productive acre
 Offensive – High branching (High VPI)
 Planting Population Range – 140 to 160K

XO 2181E



Comments for Optimum Performance:
 Top Performer – high yielding variable acre
 Offensive / Defensive – upright – VPI (.38)
 Planting Population Range – 135 to 165K

XO 2282E



Comments for Optimum Performance:
 Consistent Performer – Stress Acre Stud
 Defensive – Main stem focus – Low VPI (.27)
 Planting Population Range – 150 to 175K

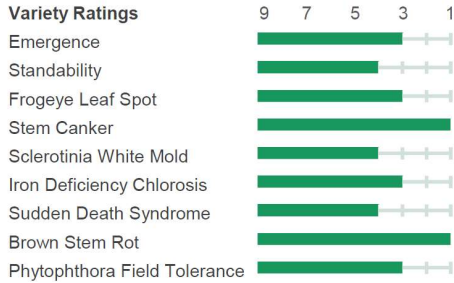
Opheim Seed & Chemical's Seed Recommendations for 2024

Notes



Distributed by BASF Corporation

XO 2323E



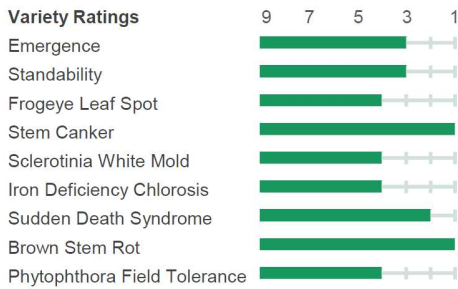
Comments for Optimum Performance:
High Yield Performer on Productive Acre
Offensive – Branch Focus – High VPI (.82)
Planting Population Range – 140 to 160K

XO 2444E NEW



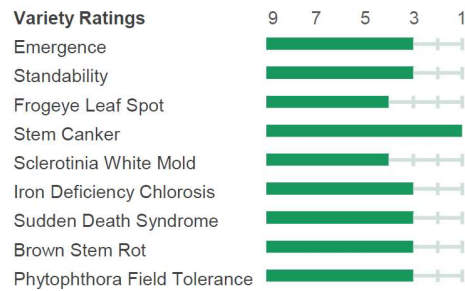
Comments for Optimum Performance:
Consistent Performer on All Acres
Off./Def. – Branch Focus – Mid VPI
Planting Population Range – 140 to 165K

XO 2613E



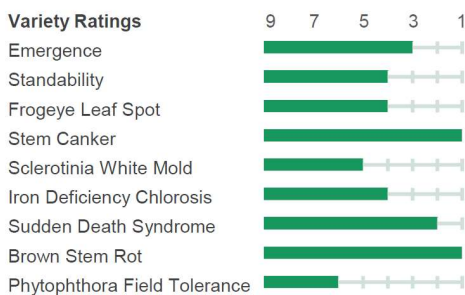
Comments for Optimum Performance:
Better on lower slope and higher SWI acre
Offensive – Upright Branchy – Mid VPI (.64)
Planting Population Range – 140 to 155K

XO 2832E



Comments for Optimum Performance:
Top Performer in all environments
Off./Def. – Main Stem Focus – Low VPI (.29)
Planting Population Range – 140 to 155K

XO 2963E



Comments for Optimum Performance:
Top Yields on Best Managed Acre
Offensive – Branch Focus – High VPI (.77)
Planting Population Range – 120 to 140K

Opheim Seed & Chemical's Seed Recommendations for 2024

Notes

Notes

XITAVO™ SOYBEAN SEED EXCLUSIVELY DISTRIBUTED BY BASF CORPORATION. Always read and follow label directions. Enlist and the Enlist logo are trademarks of Corteva Agriscience and their affiliated companies. The transgenic event in Enlist E3 soybeans is jointly developed and owned by Corteva Agriscience and M.S. Technologies, L.L.C. XITAVO is a trademark of M.S. Technologies, L.L.C., West Point, IA. © 2023 BASF Corporation. All rights reserved.



Rating Scale: 1 = Excellent, 9 = Poor

Contact your local Seed Advisor or Seed Agronomist for placement recommendations for your field. Scan this to access the BASF Rep Finder. www.xitavosoybeanseed.com

