

KenneKiwanian



Kiwanis
CLUB OF KENNEWICK

July 30, 2024

<https://us02web.zoom.us/j/89357348844?pwd=bzVMbXgweDRFbE1NVDFwdU9Vb3Bpdz09>
Passcode: 140367 Meeting ID: 893 5734 8844 Passcode: 140367

Meeting at: Zintel Creek Golf Club, 314 N. Underwood, Kennewick, WA

President- Amy Coffman opened the meeting at 12:00 Noon with 36 members and 4 guests.

Greeter: Tom Moak; **Invocation:** Audrey Manley; **Dog catcher:** Bob Kelly; **Drawing winners @ \$5:** Penny Gardner and Brett Reiboldt

Upcoming meetings and events

Soul Soup: *tomorrow* Wed July 31 @ Prayer Watch @ 4 PM
Board meeting: Thurs Aug 1 @ Zintel Creek @ noon
Youth Services Committee: Tues Aug 6 after club meeting
Young Professionals: Wed Aug 7 @ Kenmore Bldg @ noon
Benton Franklin County Fair: Aug 20-24
PNW District Convention: Aug 22-25 @ Wenatchee
Kennewick Kiwanis Foundation fundraiser: Sat Sept 28

Grace Clinic: Audrey Manley with the Community Services Committee talked about how the committee wanted to focus on one particular agency for this year and they chose Grace Clinic. They now have come up with the last project for this Kiwanis year. Grace Clinic, the free clinic in the community, used to have a very small food pantry that could not accommodate many items and various types of items. Now, with remodeling and the additional of a large refrigerator, they can accommodate more food and can help more people through their doors. The Community Services Committee will be collecting food throughout the month of August. A list of items that they can use is attached to this newsletter.

Dues Vote Held

As you might remember, earlier this month Kiwanis International voted to increase club dues by \$25. It had been quite a while since Kiwanis International dues have increased and with costs going up and despite cuts in staffing at HQ, this dues increase was needed. Club bylaws require that an increase in member dues needs to be approved by the membership at a club meeting. The club board voted to give anyone paying club dues by September 15 this year would get their dues increase reduced by half. The increase was based 34-1. Dues statements will be going out shortly.

School Supplies Drive: Wayne Bell announced that today was the last day that Youth Services would be collecting money and school supplies for SHAKE. With the money collected, a little fairy will go out and buy more school supplies. Thanks to everyone for their generosity.



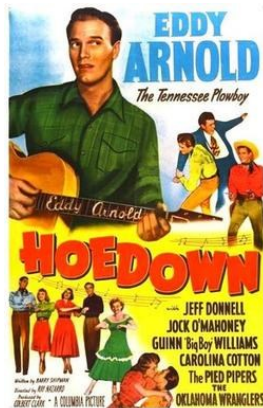
Water Follies: Tyler Pearson thanked everyone who helped at Water Follies and a number of members put in a buck or more for Tyler for a great job in organizing our participation. Tyler singled out soon-to-be-new member Julie Brown, who helped at the last minute and Rick Corson, who worked three shifts at the Follies. Rick said it

was easy work, like stamping at the Fair, except you don't have to stamp anyone.

Benton Franklin Fair: President Amy is still looking for volunteers for the county fair on August 20-24. We need your assistance...and maybe your family and friends. There are still shifts open for sellers, takers, and stampers.



Soul Soup: Human and Spiritual Values Chair Gerry Berges said we've got a good group signed up for Soul Soup tomorrow (July 31). Gerry's making taco soup and all the fixin's.



Foundation: In the absence of Foundation Fundraising gurus Vickie Bergum and Michelle DeGooyer, Foundation President Chuck DeGooyer announced that they are now selling tickets for the Foundation's Harvest Hoedown @ the OK Corral on September 28 at the Kennewick Valley Grange from 6-10 PM. Tickets are just \$50. Must be 21 and over, which includes all members of our club, but the goal is to get non-Kiwanians to attend and spend money.

Upcoming Programs:

Aug 6	Syndee Saucedo, Catholic Charities
Aug 13	Benton Franklin Fair
Aug 20	Mike Frucci, Kiwanis Children's Fund
Aug 27	Rocco Luongo, ARY Engineering



Tom Moak, our greeter

Mid-Columbia River Region
Box 6291 Kennewick, WA 99336
kiwanisclubofkennewick.com

Kiwanis Club of Kennewick, Key #01625
<https://www.facebook.com/kiwaniskennewick>
kiwanis@kiwanisclubofkennewick.com



Brent "Husky"



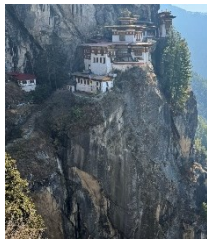
Phil "Cougar"



Wayne "Beaver"

Program: Brent Schafer got to introduce a couple Columbia Center Rotarians and longtime friends who traveled to Bhutan and Nepal and wanted to share their experiences. Phil Ohl started Vista Engineering, which he sold in 2016. He is currently volunteer managing director of Tri-Cities Angel Alliance which facilitates startup and business opportunity investments in the Tri-Cities. Wayne Johnson came to the Tri-Cities in 1987 and worked for Westinghouse and PNNL. In 2015, he was named a distinguished graduate of Oregon State University.

In March (the start of spring climbing season), these two traveled to Bhutan and Nepal to trek to the Everest Base Camp (EBC). Nepal and Bhutan are at the same latitude as southern Florida Bhutan is 13 hours ahead of PDT. They spent nine days in Bhutan before heading to Nepal. Bhutan is a small isolated Buddhist kingdom. Its population of 727,000 about the same as North Dakota. Nepal, on the other hand is secular parliamentary republic and through off its Hindu kingdom It does not have a strong economy, mainly tourism. Buddha was born there.



Tiger's Nest

In Bhutan, they went to the Tiger's Nest monastery, which was established in the 9th century and has been rebuilt several times—many monasteries have burned many times—use of candles. They saw a giant 177 feet tall Buddha that was built in 2015.



Buddha



Lukla airport

They spent 6-7 days in Kathmandu, which they called chaos and splendor. They saw the Monkey temple. The region was hit by an earthquake in 2015, and still is not totally rebuilt

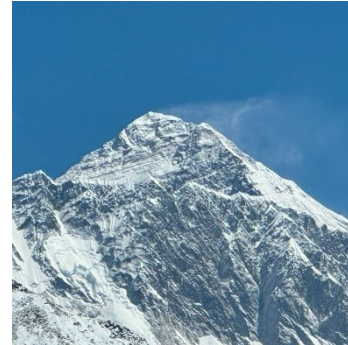
From Kathmadu they flew 50 miles to Everest Base Camp. Lukla airport is the most dangerous airport in the world. It is remote, has a slope slope runway, a cliff-side approach, has poor weather, and limited visibiity.

The trekking team entering Sagarmartha National Park 10 clients, 2 RMI guides, 4 Sherpa guides and numerous porters. Yaks have the right of way. There were breathtaking Himalyan mountain views. Climbers Memorial Hill honors climbers that died while on the mountains. Because there aren't trees, building are heated with yak dung. The EBC is located at 17,598 feet. On Day 9 they got to the EBC. They celebrated Phil's 59th birthday at the EBC.



*Namche Bazar with Kongde Ri Peak
(19,990') in the Morning Sun*

The guides and sherpas were awesome. A highlight for them was meeting the founders of The Small World, Karma and Sanam Sherpa. The Smal World is a charitable organization which helps to provide education for children, especially young girls at risk of exploitation, women's empowerment, and opportunities for local communities to break the cycle of poverty. Karma and Sanam Sherpa will be visiting Columbia Center Rotary Thursday August 15 at noon and we (Kennewick Kiwanis) have been invited to attend. Shall we take them up on the offer?



Everest



Sherpas

Editor: Tom Moak 509.628.7319

tmoak@charter.net

Photos: Russ Edwards

Photo and copy deadline Tuesday @ 4 PM



These people didn't go to Nepal, but that is former club member Kevin Gunn (l), who visited from another planet.

Famous endings (courtesy of President Amy)

“Hoping there’s ice cream in Heaven”

– (Natalie Rude’s husband—but not her current one)

**Mid-Columbia River Region
Box 6291 Kennewick, WA 99336
kiwanisclubofkennewick.com**

**Kiwanis Club of Kennewick, Key #01625
<https://www.facebook.com/kiwaniskennewick>
kiwanis@kiwanisclubofkennewick.com**