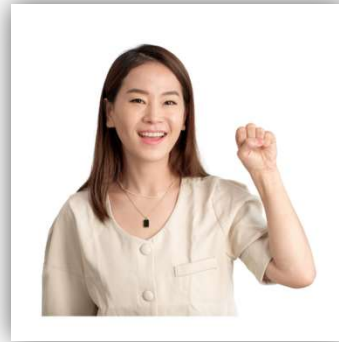


Disability Etiquette Guide



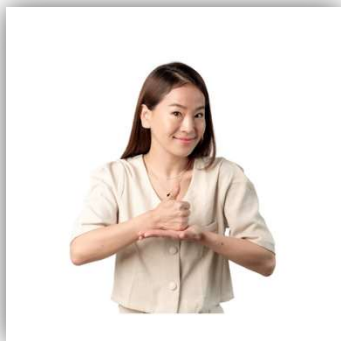
Love the person

- Accept people as they are, don't try to change or fix them.
- Focus on the person, not disability.
- Assume intelligence and treat age-appropriately.



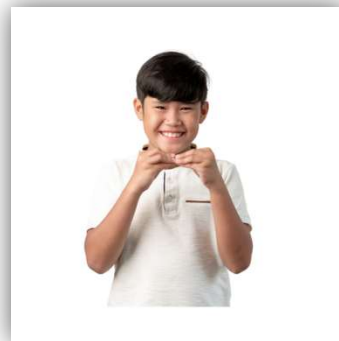
Say yes to interacting

- Announce arrival and attract attention.
- Speak directly to the disabled person.
- Speak at a normal pace and pitch.
- Wait for someone's answers. Don't finish sentences.



Help Respectfully

- Treat wheelchairs, walkers, and canes as an extension of one's body.
- Ask before touching any part of their body, devices, or service animals.
- If guiding, lead, don't pull.



Do More

- Position yourself so the person can easily see and hear you.
- Communicate details of an item or surroundings.
- Learn about an individual's preferences.