

Patriot[®] VRM12

Viewer/Reader/Multi-Media System



User Manual

1-800-364-16**08**

Introduction

Congratulations on your purchase of the Patriot VRM system (herein referred to as Patriot). Patriot has been designed for the vision challenged to regain increased independence and access to information, news, print, daily tasks, and entertainment. With your Patriot you can explore adaptive access to whatever level you desire.

First, we start with stunning optics producing brilliant contrast magnification assisting you to read and write with reduced eye strain and increased comfort.

Second, with built-in Reader feature you have the option to listen while the printed text on the page is spoken aloud. Sometimes a lengthy documents or a large volume of text is just easier to hear, while giving your eyesight a rest.

What's in The Box?

Included is a 12.4" high definition touchscreen system that is mounted on a custom **folding** stand with adjustable torque positioning, **a carrying case**, a power adapter for the Patriot, **a USB powering cable**, and this User Manual.

The Metal Stand

The Patriot has a custom stand that has multi positioning to allow for adjustments to suit your comfortability. The stand allows for folding until nearly flat and also has a handle on top for easy carrying and protection.

Power Cable

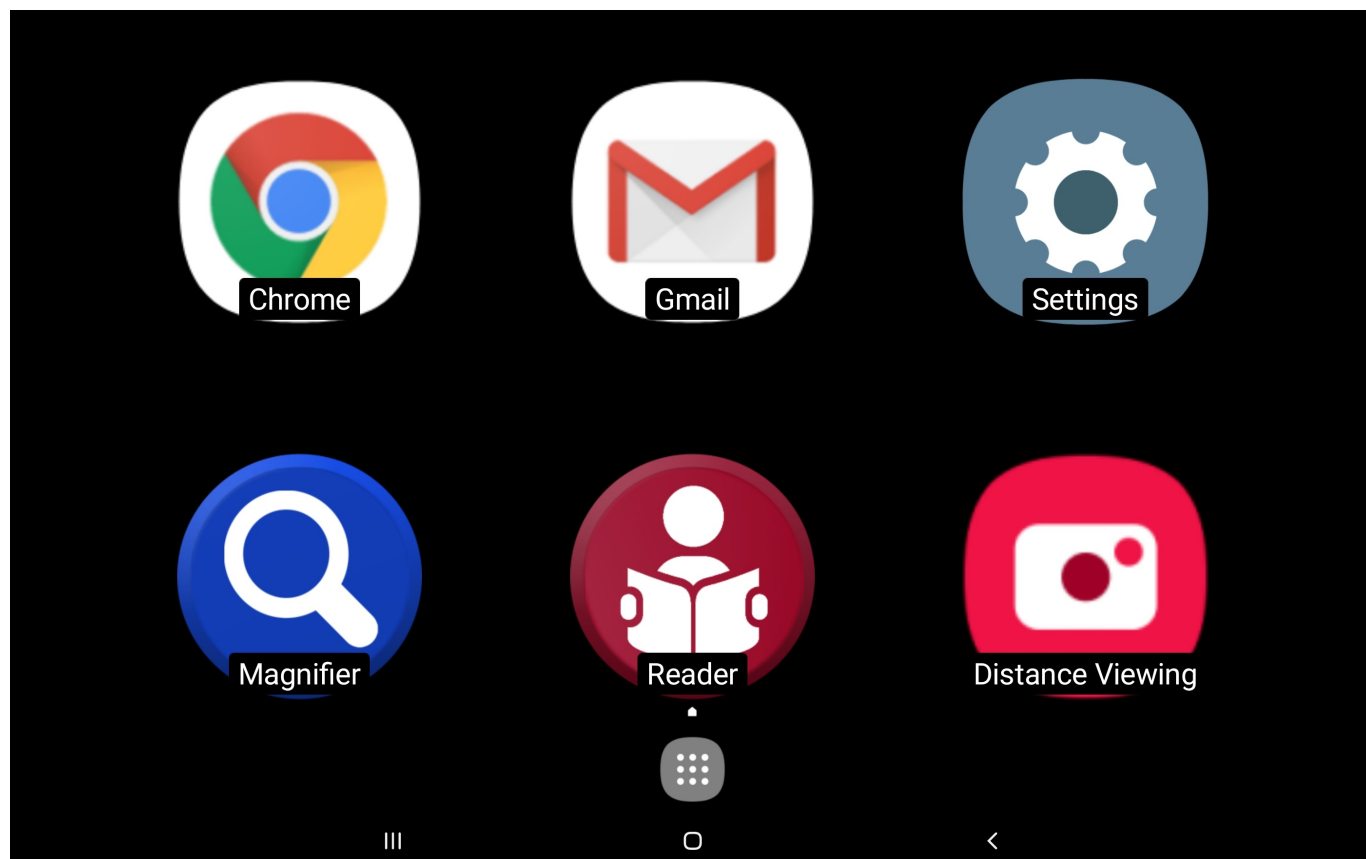
One power cable is all that is required to use the Patriot. It is a SAMSUNG® USB cable with SAMSUNG® power block. The power adapter is white with a doublet USB connector for charging your Patriot®. It is labeled SAMSUNG®.

Using your new Patriot

Step One – Plug the white power adapter for Patriot into a properly grounded wall outlet and the other end into the left USB doublet port of your Patriot VRM.

Step Two – Power up your Patriot by pressing the power button. The power button is a thin button located two inches from the lower right corner of the touchscreen. It is used to switch power on or off. Otherwise, it can be quick pressed to place the Patriot in sleep mode or awake it from sleep mode if it is in sleep mode.

This brings you to the Patriot menu, pictured below:



Step Three – from the Home Screen, use one finger and tap on Magnifier to open it. It will announce " Magnifier Started ".

Next, hold your reading material as low as possible under the screen, you can begin to use this as a video magnifier to see to read items. Just follow the instructions below:

Using the Magnifier:

Hold your reading material under the screen with one hand. With your other hand, use one finger and single tap onto the screen to set the focus onto your reading material.

Next, using three fingers single tap in succession will change the color mode as follows:

Full Color

Brighter Full Color

Positive (Black text on white background)

Negative (White text on black background)

Black text on Yellow background

Yellow text on Black background

Black text on Green background

Green text on Black background

Blue text on Yellow background

Yellow text on Blue background

Next, using your thumb and pointer finger pinch them together and spread apart will zoom text size bigger or smaller.

The lower left corner has a red settings button to make changes to the Magnifier features. These have been set at a typical configuration for most clients but can be explored with double tapping each option on each menu.

Close the Magnifier by double tapping the X button on the upper left side.

Using the Reader

From the Patriot menu, select the Reader option by double tapping with one finger. You will hear "Reader Started".

Raise the adjustable arm so that it is parallel to the platform below.

Place your document below the raised screen using the front edge as a guide in placement. Look up at the screen to see that the full document is viewed on the screen. This is the basic orientation used to photograph the material to be read aloud. For all practical matters you will not be required to view the top of the screen when working the reader. For now, it is useful to understand the various mechanics by viewing. When the document to be photographed appears centered onto the screen, then double tap with one finger on the center of the screen and it will photograph the document to begin the process of converting to speech. You will hear a shutter sound.

You may lower the adjustable arm to see the screen being read aloud.

You can pause by single tap with one finger, then you may continue by single tap with one finger again.

You may point to read from a specific word or area of the text by single tap on the area you'd like to read from.

You can adjust size of the document by using the pinch technique (pointer finger to thumb) and spreading for larger size and pinching for smaller size.

You can position the document within view using two fingers dragging to right or left or up and down to navigate to the section of the document you would like to see.

When completed using the Reader, you can exit by DOUBLE tapping on top of the Red X button located on the upper left corner. This will bring you to the next option to photograph another document by repeating the process. Exiting completely is double tapping the red X until you are fully out of the application.

Using the News (WiFi enabled)

With WiFi connected, you can explore available on-line newspaper content.

To access News, using one finger, double tap on the NEWS option from the Patriot Menu, DOUBLE TAP USA, for example, DOUBLE TAP LOCAL, DOUBLE TAP ALABAMA, DOUBLE TAP BIRMINGHAM, DOUBLE TAP SPORTS, and DOUBLE TAP story to listen.

Note: not all stories are available and subscriptions to certain newspapers may be required at additional expense.

Exit out of the News by REPEATEDLY double tapping with one finger on the red X in the upper left corner.

Do this repeatedly until you arrive back onto the Patriot menu.

THE HOME SCREEN

You may select from the **six** shortcuts, the magnifier, the reader, the email application, the Internet, the **distance viewing**, and **settings**.

Email

View Email

Push the HOME button located centered on the top of the Patriot touchscreen. This takes you back to the HOME SCREEN. Using one single finger tap the Email application shown on the screen.

It has a large white envelope, lower right corner of HOME SCREEN.

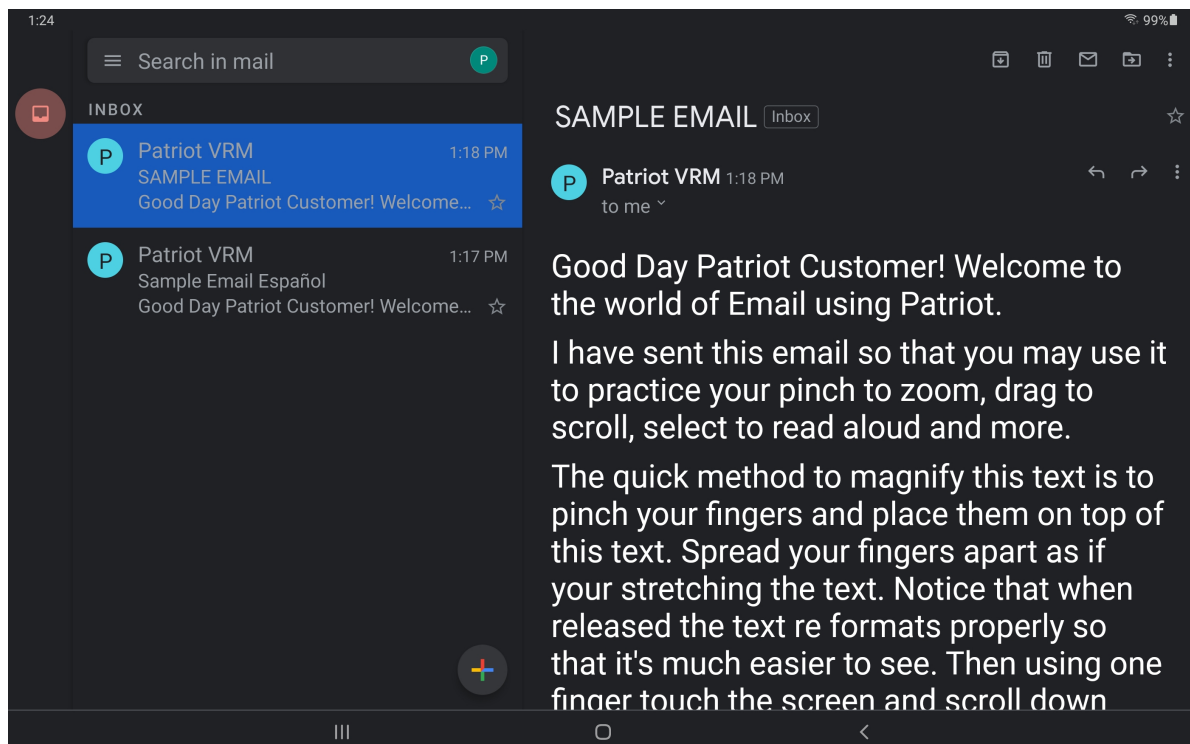
A new email account has already been loaded by us for you to use if you wish on your device, you can now use your email. If **you would like to set up your existing email address**, see Exhibit Two – Setting up your individual Email

For now, there is one email account already setup in your Patriot. It has the user name patriot_____, where _____is the serial number of your Patriot. The password is the serial number of your Patriot. This email was necessary to build your unit, however, it may be ignored and even deleted if preferred. We recommend leaving it as a backup.

for us to send you technical information should your email not be setup yet or not working.

Select the sample email from this account. Magnify your email by using pinch on the selected text within the body of the email received. When magnified using PINCH, incoming email from friends and relatives as text will be shown to you in a reformatted view making it easier to view.

You can use one finger to drag down the body of text **and left or right to** continuing to read until you've reached the end of text.



Note: There are emails that appear to be text but rather a pictures of text such as in advertising. You will need to enable ZOOM using one finger triple tap and DRAG around the picture of text using two fingers DRAGGING. Remember you must disable ZOOM after use otherwise everything will be over magnified and not fit onto screen. Disable ZOOM by using one finger triple tap.

Compose Email

Using one finger, select from the upperright choices. Each is a graphic symbol denoting from the left: View Format (two columns versus three columns), Compose, Reply, Forward, Delete, and the last symbol is for Settings in Email.

Select the Compose button which is the second button from the left as explained above.

Using one finger, single tap to the right of the
TO: Dialogue box

Using the on-screen keyboard enter the email address to who you are sending. Note, contacts can be input once and the list will display under the box allowing you to select from the appropriate name in your CONTACTS.

Next, input subject information if desired

Next, using one finger single click within the top of the body of the email window and using the onscreen keyboard you may type your message.

Another alternative to reduce typing is using your own voice to speak aloud content that you would like typed onto the screen. **TAP the keyboard icon on the bottom right corner of the keyboard and then selecting "Google Voice Typing".**

Using one finger, single tap on the compose symbol. It is located to the upper right of the screen. You will see **three** symbols **in the upper-right hand side of the screen**, the second from the left is the compose symbol. TAP on this to compose an email.

When in the body of an email to be composed, **TAP the keyboard icon on the bottom right corner of the keyboard and then selecting "Google Voice Typing"**, wait for the audible sound, then speak your content. TAP the microphone key on the screen to stop recording.

Your spoken words are put onto the screen as text. You may practice using one sentence at a time at first or just speak fluidly a paragraph at a time. **You will need to announce the word "period" whenever you want a period placed during your Google Voice Typing.**

Editing your spoken text using your on-screen keyboard may be needed before sending. This is accomplished by pressing on the area to be edited, the on-screen keyboard automatically appears, and make adjustments.

External keyboards can also be used with the Patriot, sold separately, however, may not contain the microphone key. Please call for further information.

Speaking to your Patriot

Assuming your Patriot is “on-line” and connected to **the internet**, you can request information using your voice. You may speak to your Patriot by either asking questions referred herein as VOICE SEARCH or requesting action referred herein as COMMANDING.

Voice Search

Make sure your screen is on and simply speak the words "OK Google". After **speaking**, you will hear a musical tone, then ask a question such as “what is the time?” A verbal response will be voiced back answering your question.

Press the HOME button again and you will be brought back to the **HOME SCREEN**. Repeat the procedure each time you would like to ask your Patriot questions.

Note: If the unit will not respond to you saying "OK Google", then you must first program your distinct voice into the settings as described on the next page.

You will need to perform the following steps if your PATRIOT is not recognizing the verbal phrase "OK, GOOGLE". First you will need to make sure that your device is connected to the Internet.

Navigate to the HOME SCREEN using the HOME BUTTON. Using one finger single tap on the square above the HOME BUTTON to access the APPS that are installed on the device. Then you will need to TAP on the folder that is titled "Google". From there TAP on the icon that says "Google". Then TAP on the small circle near top-center of the screen with the letter "P" in it. The letter may be different if your Google account has been loaded on the device. The letter in the circle is always the first letter of your first name. The "P" indicates that you are still using the pre-loaded Patriot Google account. Changing settings may be problematic so we caution exploring these with assistance from our technical department or one of our representatives.

Having said this, you can carefully go to the following

TAP SETTINGS > TAP VOICE TAB ON LEFT OF SCREEN > TAP VOICE MATCH > TAP "VOICE MODEL" OR "TRAIN VOICE MODEL" OR "RETRAIN VOICE MODEL" > FOLLOW THE STEPS TO SAY THE REQUIRED PHRASES USING YOUR VOICE > FOLLOW THE STEPS UNTIL SAVED / FINISHED. Now your device will recognize your voice when you say "OK Google".

Example questions you can practice with are:

OK GOOGLE, [wait for chime] What is the time?

OK GOOGLE, [wait for chime] What is the temperature outside?

OK GOOGLE, [wait for chime] What was the score of the Florida Marlins game?

OK GOOGLE, [wait for chime] Will I need an umbrella tomorrow?

To exit and close out of this feature, simply press the HOME button located on the top of the screen under the clamp atop the Touchscreen.

Note: Most asked questions that are specific will successfully result in a verbal response. However, a compound question asking with less specifics may result in a response that is not spoken aloud but rather provided on the screen. This may be viewed by low vision users with magnification as follows:

With one finger, enable ZOOM by triple tapping screen with one finger and then pinch to zoom and then drag with two fingers. It should be noted here that the triple tap with single finger works EVERYWHERE throughout the use of Patriot. Remember to triple tap with a single finger to deactivate the magnified screen option when no longer needed otherwise the screen will appear to “fall off” the left and right edge of the framed border.

Internet, Read Aloud, Patriot Speaks, and Zoom

Begin to search the Internet from the HOME SCREEN by single tap on the **Chrome** shortcut. The default page is GOOGLE search engine prompting you to input your search phrase.

Note: The Internet settings have been made to enhance your experience browsing the World Wide Web. However, this is an advanced exercise as the content of the web is created with an endless variety of colors, sizes, fonts, formats, from fairly simple to extremely complex. Therefore you will encounter poor choice of colors or extremely small text on websites. That is the responsibility of the **web master** creator for each site.

Although we have set to enable larger fonts and easier to see text on websites, you may need to enable ZOOM. ZOOM is a tool that is enabled by using one finger and rapidly triple tapping on the screen.

ZOOM is always available throughout all screens and all circumstances, however, refrain from using unless absolutely necessary.

When ZOOM is enabled, you may see a light blue highlighted framed border denoting ZOOM is enabled. Regardless if it is visible to the user, everything will become bigger and pinch to zoom will work on everything on the screen. ZOOM must be disabled using single finger quickly triple tapping so that

you can place the screen back in context as you continue to use your Patriot.

ZOOM is a magnification tool to be enabled only when needed.

Take your time exploring. Use pinch to zoom in and out. Practice dragging by navigating up to the top of a web page or down to the bottom of the web page using two fingers together. Be patient as websites are overwhelming at times and very "busy" full of content, videos, text, graphics, advertising, links to other pages, sound clips, and more.

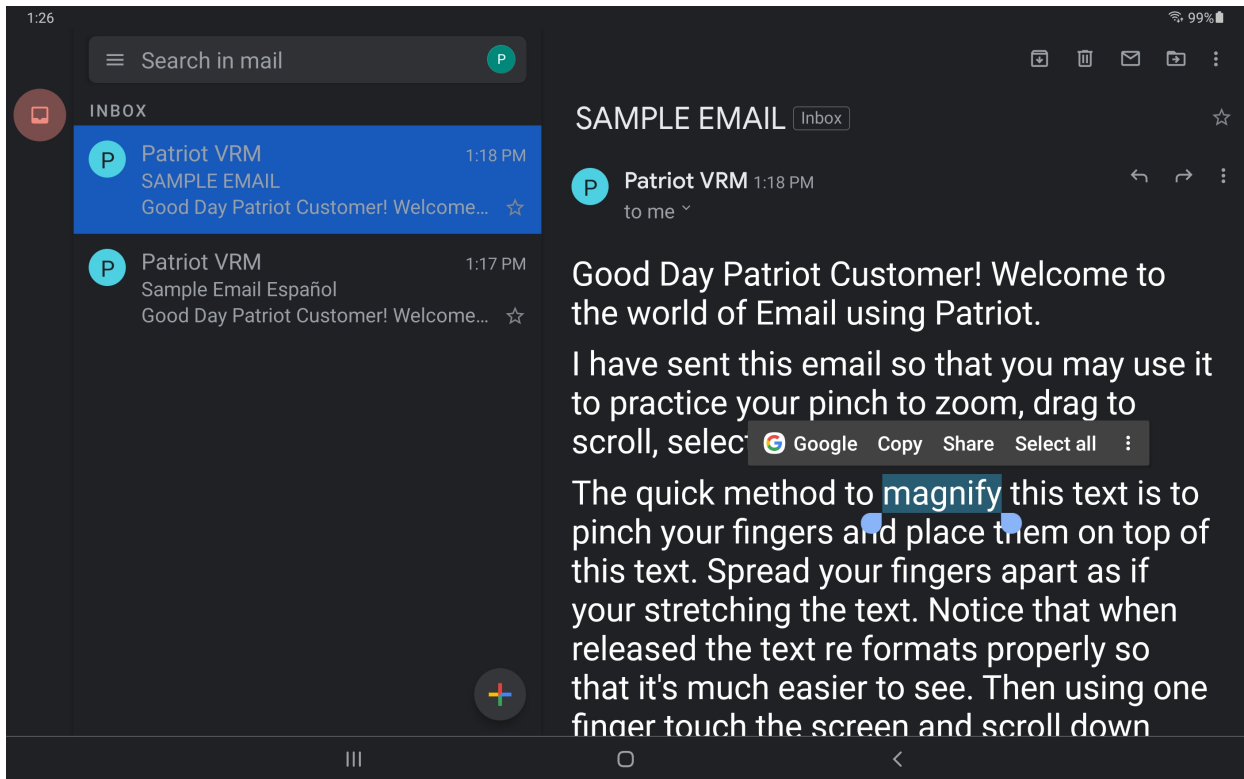
With practice, finger gestures becomes second nature as you develop your skills through practice.

Remember! Get out of ZOOM by using a single finger and quickly triple tapping. Again, the technique of triple tapping very quickly together is a little tricky but you will master with practice.

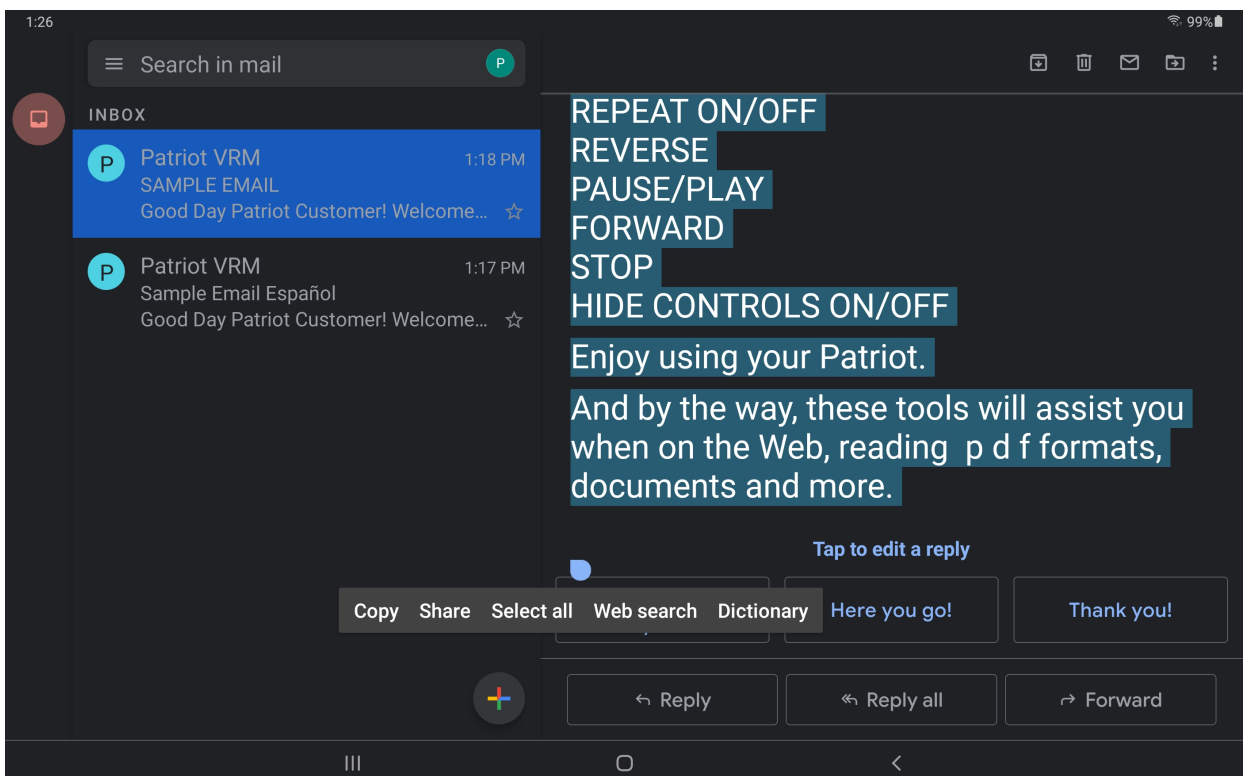
Over-magnifying with ZOOM reduces the field of view resulting in increased need to drag across the screen.

Another useful tool on your Patriot VRM is the ability to convert the Internet and your EMAIL and virtually any document to a large print format onto the screen with easy to see reading within the margins AND reading aloud as well.

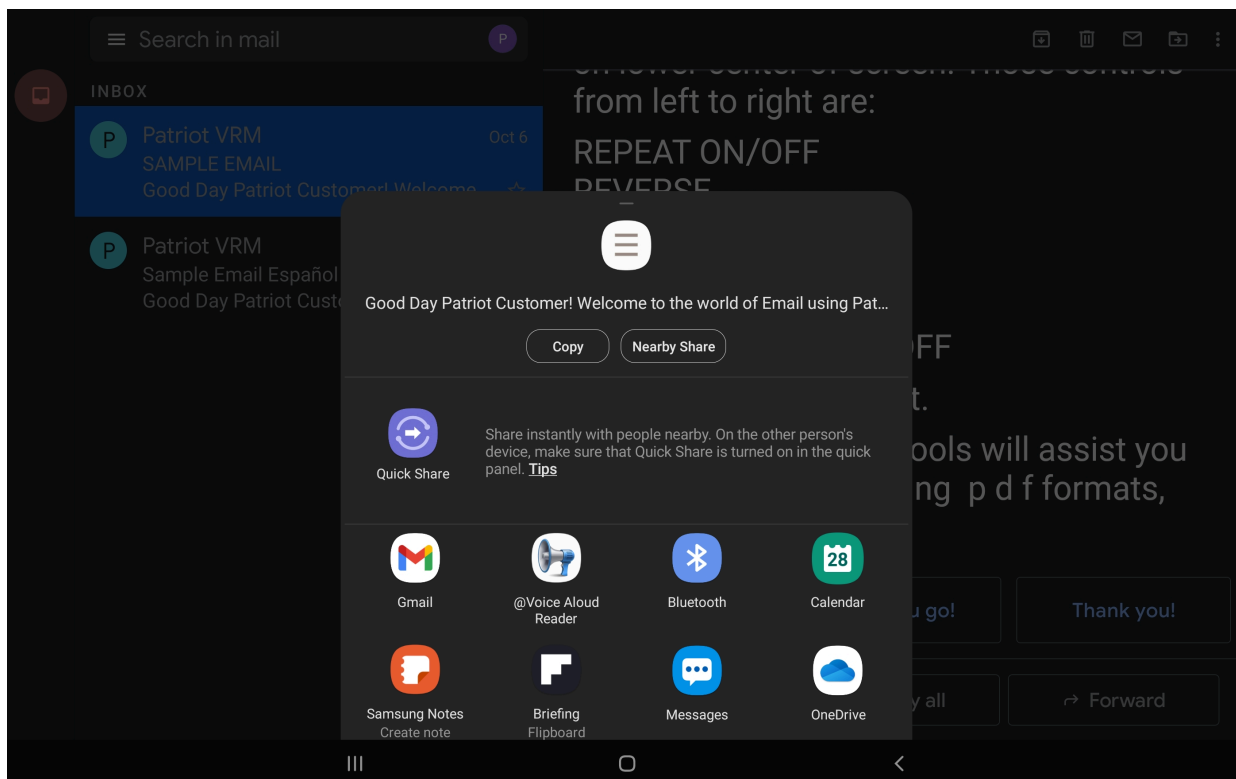
This is accomplished by pushing directly onto the screen on top of the text on any given website. **TAP on the button that says "Select All".**



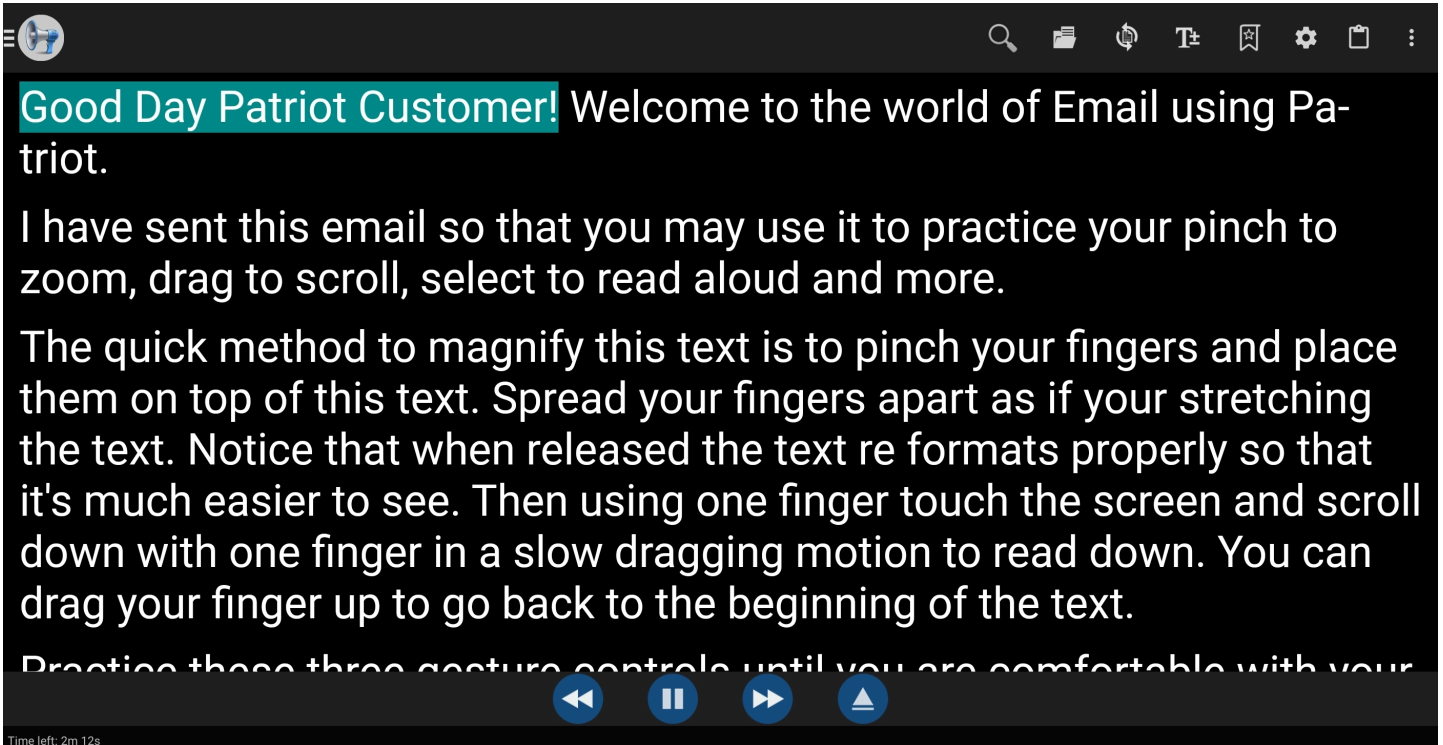
Then **scroll down to the bottom and TAP on the "Share" button.**



From the next screen that automatically pops up, select the BLUE MEGAPHONE option.

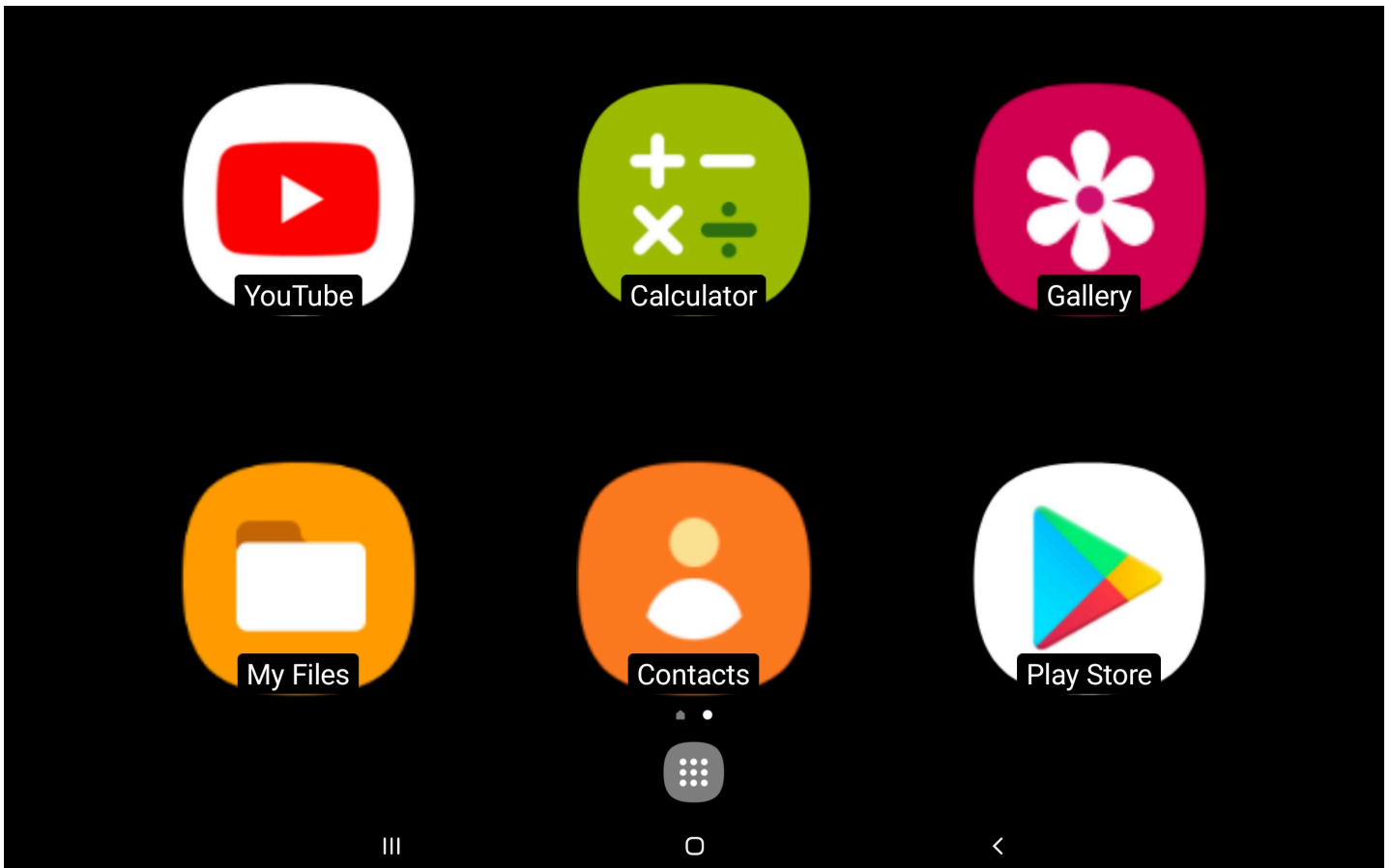


The content will be transformed to large font within margin borders and read aloud. Each section that is read aloud is highlighted. Note: the controls **for this read-out-loud program is located at the bottom-center of the screen.**



There is a Play/Pause button, a rewind button, and a fast forward button. You may also pause the reading, scroll down to a desired sentence to begin from, and then DOUBLE TAP on that sentence for the program to start reading from thereon. Be careful to not TRIPLE TAP, otherwise you will enable SCREEN ZOOM and you will need to TRIPLE TAP again to disable SCREEN ZOOM.

The EXTRAS SCREEN



The next screen is the EXTRAS SCREEN. You can navigate to this screen by gently swiping from right to left side of the **Home** screen which reveals this EXTRAS SCREEN. This screen has **six** large shortcuts to quickly launch options. Pictured from the upper left corner are the following:

You Tube, Calculator, Gallery,
My Files, Contacts, & **Play Store.**

Each one of these options may be selected by using one finger and single tap to launch. Then explore.

You Tube hosts on line videos ranging from short videos to complete shows.

Calculator is a handy tool for assistance at any time

Gallery is home to your photographs taken with the camera

My Files is where your files are stored and categorized

Contacts contain any names and addresses you input

Play Store is a shopping portal of thousands of **APPS**

Specifications

Samsung Tab S7+ (Model #SM-T970)

Android 11

12.4" WQXGA+ 120Hz Display 2800x1752 / 256 DPI

FULL HD 1080P Playback and Recording

GPS **Location**

Li-Po 10,090 mAh, non-removable Battery

Fast charging 45 watt

IR LED

8GB RAM

256 Gig Storage (Approx. 200GB available to use)

Qualcomm Snapdragon 865 CPU 8 Core - 3.09GHz

Bluetooth **5.0**

Wi-Fi **802.11 a/b/g/n/ac/ax 2.4G+5GHz, HE80, MIMO**

Headphone jack

2 Cameras: Rear facing camera & Front facing camera

SD Memory Card Slot

8 User Modes

Light weight powder coated custom aluminum stand

Torque hinges

Samsung Stylus Pen

Setting up your Email

You can add your existing email **and/or Google** account through the Settings section of your Patriot.

TAP the HOME BUTTON

TAP on the **large gear icon** to launch **the Settings APP**

Scroll up/down on the left column and TAP on "Accounts and backup"

TAP on "Manage accounts"

Note: You will see the pre-loaded Patriot account

TAP on the "+ Add account" button to add your account

TAP on the appropriate account that you would like to add and sign in to the account. Consult with us for further help if needed.

Glossary of Terms

PINCH – technique using two fingers, namely the thumb and the pointer finger in a spreading apart or squeezing together manner to achieve magnification zoom in and out

SWIPE – using one finger and quickly sliding across screen right left, left right

DRAG – using two fingers and sliding across screen to “pull” the viewable image up down or left right motions

CLICK – using one finger and quick tap onto screen

ZOOM - enabled using one finger and *quickly* triple tapping on screen, perform again to disable ZOOM

HOME BUTTON – physical button located on top of screen directly centered and under the CLAMP above screen

POWER BUTTON – located two inches from the lower right corner of screen underside of frame. This button is easiest **pushed by putting your finger all the way to the right and sliding left till engaged**

SLEEP BUTTON – identical button as POWER BUTTON when pressed quickly puts unit to sleep and wakes unit up

POWER OFF – can only be performed using POWER BUTTON by long pressing while unit is plugged into AC Power, otherwise RESTART will occur if long pressed under battery power only

DOUBLET USB port – located on the left side of screen along the edge of frame, push the proper USB supplied cable with ridged surface facing user

TORQUE ARM – This is a self-holding arm capable of keeping position wherever you may position screen and is constantly under tension

TAP - Same as CLICK (Using one finger, single tap quickly on the screen)

DOUBLE TAP - Use one finger and quickly double tap on the screen

TRIPLE TAP - Use one finger and quickly triple tap on the screen

Patriot[®] and Magnifying America[®] are registered trademarks of Low VisionAids, Inc.

Patriot Vision Industries, LLC. is an affiliate manufacturer **for** Low VisionAids, Inc.

Google[®] is a registered trademark of Google, Inc.

Play Store[®] and YouTube[®] are registered trademarks of Google, Inc.

Samsung[®] is a registered trademark of Samsung, Inc.

This manual is © Copyrighted 20**21**. All Rights Reserved. Duplication in part or whole is strictly prohibited. It is a violation of federal trademark regulations to copy or use without expressed written permission of trademark/copyright holder.

All Rights Reserved.

For Further Information:

Contact your authorized Patriot® Dealer or us at:

Patriot Vision Industries, LLC.

2125 SW Highway 484

Ocala, FL 34473

1-800-364-1610

Outside United States 954-629-2977

Fax 1-352-307-6614

www.patriotvisionindustries.com

Email: info@patriotvisionindustries.com

Dealer Inquiries Welcome