

Reciprocating Pumps



S N T X 5 2 3 1 - 0 1

As the industry leading manufacturer of reciprocating pumps, **we offer a large array of field-proven, reliable pumps backed by a global technical support team.**

National™

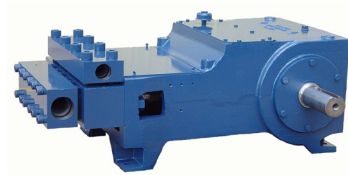
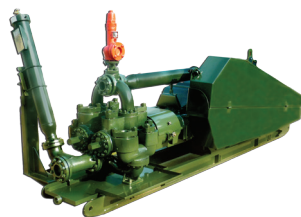
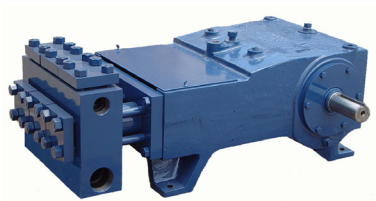
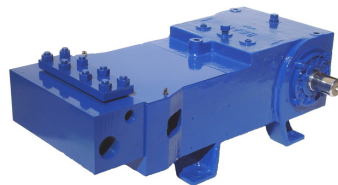
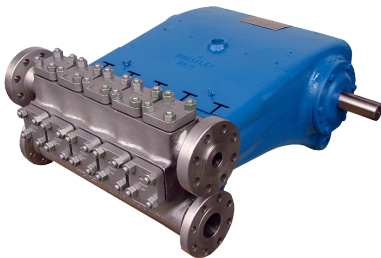
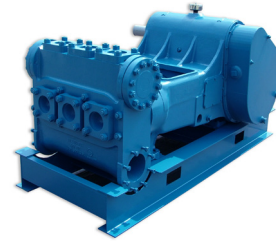
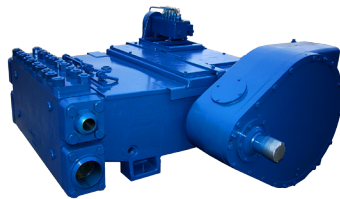
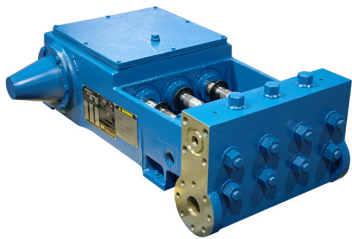
Oilwell™

Wheatley™

Gasol™

Bear™

MSW



Call 918-447-4600 to find a distributor near you.

Reciprocating Pumps

As the industry leading manufacturer of reciprocating pumps, we offer a large array of field-proven, reliable pumps backed by a global technical support team. Our product line includes continuous and intermittent duty pumps available in single-acting and double-acting models. With simplex, duplex, triplex, and quintuplex designs, we have an option that can meet your needs in nearly every application.

Single-Acting, Continuous Duty Pumps: Cast Nickel Aluminum Bronze is the most common stocked cylinder. Other metallurgies may be stocked based on market demands. Secondary models include all other metallurgies aside from Cast Nickel Aluminum Bronze. These pumps will typically have a longer lead time.

Rated Horsepower	Pump Model No.		Maximum Displacement				Maximum Pressure			Type	Metallurgy					
	New	Old	Gallons per minute (USGPM)	Liters per second (l/s)	Barrels per Day (BPD)	Cubic Meters per Hour (m ³ /hr)	Pounds per Square Inch (PSI)	Kilopascals (kPa)	CDI Cast Ductile Iron		CBRZ Cast Nickel Aluminum Bronze	CSS Cast Stainless Steel	CSTL Cast Carbon Steel	FCSTL Forged Carbon Steel	FSS Forged 15-5 Stainless Steel	CDPLX Cast Duplex Stainless Steel
2	2S-1L	P50BLS	4.80	0.30	164	1.08	1,149	7,920								
	2S-1M	P50B	3.60	0.23	125	0.83	2,042	14,081	X	X	X	P				
	2S-1H	P50BH	1.20	0.08	41	0.27	4,595	31,681					X	X		
5	5S-2L	P50ALS	10.41	0.66	357	2.36	1,149	7,920	X	X	X	P				
	5S-2M	P50A	7.97	0.50	274	1.81	2,042	14,081	X	X	X	P				
	5S-2H	P50H	2.60	0.16	90	0.59	4,595	31,681					X	X		
11	11D-2L	P100ALS	23.80	1.50	816	5.40	1,149	7,920	X	X		P				
	11D-2M	P100A	18.24	1.15	626	4.14	2,042	14,081	X	X		P				
	11D-2H	P100H	5.96	0.38	205	1.35	4,595	31,681					X	X		
22	22T-2L	T225LS	42.70	2.69	1,464	9.69	1,443	9,949	X	X	X	P				
	22T-2M	T225M	32.70	2.06	1,121	7.42	2,565	17,688	X	X	X	P				
	22T-2H	T225H	10.70	0.67	366	2.42	4,660	32,130					X	X		
30	30T-2L	J-30-L	51.65	3.26	1,771	11.73	2,000	13,790	X	X		X				
	30T-2H	J-30-H	22.95	1.45	787	5.21	5,000	34,474			X	X				
31	31Q-2L	5P200A	57.40	3.62	1,968	13.04	2,042	14,081	X	X		P				X
	32T-2L	T225LS	42.69	2.69	1,464	9.69	2,037	14,046	X	X	X	P				
	32T-2M	T225M	32.68	2.06	1,121	7.42	2,565	17,685	X	X	X	P				
55	55T-3H		23.91	1.51	820	5.43	3,300	22,750					X	X		
	55T-3L	3364-7	95.62	6.03	3,279	21.72	1,391	9,591		X						
	55T-3SC	3365-SSC	77.46	4.89	2,656	17.59	1,817	12,527	X							
	55T-3LS	3364-6	95.62	6.03	3,279	21.72	1,480	10,204				P				
	55T-3M	3364-3	46.86	2.96	1,607	10.64	1,817	12,527	X	X						
59	59T-3H		46.86	2.96	1,607	10.64	2,473	7,050								
	59T-3L	T365AL	134.90	8.51	4,627	30.65	970	6,686	X	X		P				X
	59T-3M	T365AM	93.71	5.91	3,213	21.28	2,295	15,825	X	X		P				X
	59T-3MS	T365MS	33.74	2.13	1,157	7.66	4,789	33,017					X	X		
	59T-3H	T365H	14.99	0.95	515	3.41	10,000	68,948					X	X		
60	60T-3L	J-60-L	137.7	8.69	4,722	31.27	1,500	10,342	X	X		X				
	60T-3M	J-60-M	61.2	3.86	2,099	13.90	3,200	22,063	X	X		X				
	60T-3H	J-60-H	28.95	1.82	992	6.57	5,000	34,474			X					
80	80T-3L	80T-3L	174.3	11.00	5,976	39.58	2,017	13,906	X	X		X				
	80T-3M	80T-3M	61.2	3.86	2,099	13.90	4,267	29,420	X	X						
	80T-3H	80T-3H	28.9	1.82	992	6.57	5,161	35,584			X					
100	100T-4L	J-100-L	209.1	13.19	7,171	47.49	1,659	11,436		X	X	X				
	100T-4M	J-100-M	82.9	5.23	2,843	18.83	3,180	21,925		X	X	X				
	100T-4H	J-100-H	56.2	3.55	1,928	12.77	5,000	34,474		X		X				
101	101T-4L	T100-4	209.1	13.2	7,171	47.5	1,220	8,408	X	X		P				X
	101T-4M	T100-3	114.7	7.2	3,935	26.1	2,744	18,919	X	X		P				X
	101T-4H	T100-2	48.5	3.1	1,663	11.0	5,378	37,081					X	X		F
103	103Q-3L	Q3115AL	232.9	14.70	7,987	52.9	970	6,686	X	X		P				X
	103Q-3M	Q3115AM	161.8	10.21	5,547	36.7	2,295	15,825	X	X		P				X
	103Q-3MS	Q3115MS	58.2	3.67	1,997	13.2	4,789	33,017					X			
110	103Q-3H	Q3115H	25.9	1.63	888	5.9	10,000	68,948						X		
	110Q-3L	HP125AL	235.6	14.9	8,079	53.5	1,037	7,149	X	X		P				X
	110Q-3M	HP125AM	163.6	10.3	5,610	37.2	2,454	16,922	X	X		P				X
	110Q-3MS	HP125MS	58.9	3.7	2,020	13.4	5,121	35,306					X			
	110Q-3H	HP125H	26.2	1.7	898	5.9	10,000	68,948						X		
125	125T-4L	A344-H	293.8	18.5	10,072	66.7	1,500	10,342	X							
	125T-4M	A334-H	165.2	10.4	5,666	37.5	3,180	21,925	X							
	125T-4H	A324-H	92.9	5.9	3,187	21.1	5,000	34,474		X						
130	130T-4L	130T-4L	241.3	15.2	8,272	54.8	1,750	12,065	X			X				
	130T-4M	130T-4M	103.6	6.5	3,551	23.5	3,111	21,450	X							
	130T-4H	130T-4H	56.2	3.5	1,928	12.8	5,000	34,474		X						
133	133T-4L	T140-4	209.1	13.2	7,171	47.5	1,440	9,929	X	X		P				X
	133T-4M	T140-3	114.7	7.2	3,935	26.1	3,600	24,821	X			P				X
	133T-4H	T140-2	48.5	3.1	1,663	11.0	6,000	41,369					X			F
163	163Q-4L	HP165AL	339.8	21.4	11,652	77.2	1,220	8,408	X	X		P				X
	163Q-4M	HP165AM	186.5	11.8	6,394	42.3	2,744	18,919	X	X		P				X
	163Q-4H	HP165MS	78.8	5.0	2,702	17.9	5,378	37,081					X			F
165	165T-5L	J-165-L	326.4	20.6	11,191	74.1	1,650	11,376	X	X		X				
	165T-5M	J-165-M	154.3	9.7	5,290	35.0	3,120	21,512	X	X		X				
	165T-5H	J-165-H	81.6	5.1	2,798	18.5	5,000	34,474		X	X		X			

Reciprocating Pumps

Single-Acting, Continuous Duty Pumps (continued)

Rated Horsepower	Pump Model No.		Maximum Displacement				Maximum Pressure			Type	Metallurgy					
	New	Old	Gallons per minute (USGPM)	Liters per second (l/s)	Barrels per Day (BPD)	Cubic Meters per Hour (m ³ /hr)	Pounds per Square Inch (PSI)	Kilopascals (kPa)	CDI Cast Ductile Iron		CBRZ Cast NiV	CSS Cast Stainless Steel	CSTL Cast Carbon Steel	FCSTL Forged Carbon Steel	FSS Forged 15-5 Stainless Steel	CDPLX Cast Duplex Stainless Steel
184	184T-7XL	HP250XL	636.7	40.2	21,832	144.6	728	5,020	Triplex							
	184T-7L	HP250BL	347.9	21.9	11,927	79.0	1,204	8,299		X		X				X
	184T-7M	HP250BM	203.4	12.8	6,975	46.2	2,912	20,081		X		P				X
	184T-7H	HP250BH	87.0	5.5	2,982	19.7	6,000	41,369								F
200	200T-5L	J-200-L	326.4	20.6	11,191	74.1	1,680	11,583	Triplex		X	X		X		
	200T-5M	J-200-M	154.3	9.7	5,290	35.0	3,349	23,097		X	X		X			
	200T-5H	J-200-H	81.6	5.1	2,798	18.5	5,000	34,474		X	X		X			
202	202T-6L	A346-H	353.7	22.3	12,127	80.3	1,500	10,342	Triplex		X					
	202T-6M	A336-H	176.3	11.1	6,045	40.0	3,180	21,925		X						
217	217Q-4L	HP200AL	339.8	21.4	11,652	77.2	1,440	9,929	Quintuplex	X	X		P		X	
	217Q-4M	HP200AM	186.5	11.8	6,394	42.3	3,600	24,821		X	X		P		X	
	217Q-4H	HP200MS	78.8	5.0	2,702	17.9	6,000	41,369						X	F	
250	250T-5L	250T-5L	368.5	23.2	12,634	83.7	1,544	10,646	Triplex		X			X		
	250T-5M	250T-5M	215.5	13.6	7,388	48.9	3,026	20,865		X				X		
	250T-5H	250T-5H	103.3	6.5	3,541	23.5	5,000	34,474		X						
267	267Q-6L	A-546	663.3	41.8	22,741	150.7	1,420	9,791	Quintuplex		X					
	267Q-6M	A-536	330.5	20.9	11,331	75.1	3,180	21,925		X						
300	300Q-5L	J-275-L	544.0	34.3	18,651	123.6	1,650	11,376	Quintuplex		X					
	300Q-5M	J-275-M	257.1	16.2	8,816	58.4	3,000	20,684		X	X			X		
	300Q-5H	J-275-H	136.0	8.6	4,663	30.9	5,000	34,474		X	X			X		
308	308T-7XL	HP360XL	636.7	40.2	21,832	144.6	1,220	8,410	Triplex			X			X	
	308T-7L	HP360AL	347.9	21.9	11,927	79.0	2,169	14,952		X		P			X	
	308T-7M	HP360AM	203.4	12.8	6,975	46.2	3,600	24,821		X		P			X	
	308T-7H	HP360H	87.0	5.5	2,982	19.7	6,170	42,542					X	X		
350	350Q-5L	Q350-4	489.6	30.9	16,787	111.2	1,670	11,511	Quintuplex	X		P			X	
	350Q-5M	Q350-3	323.2	20.4	11,082	73.4	3,483	24,017		X		P			X	
	350Q-5H	Q350-2	154.9	9.8	5,312	35.2	6,000	41,369		F				X		
430	430T-7L		535.5	33.8	18,360	121.6	1,550	10,687	Triplex	X	X		X			
	430T-7M		301.2	19.0	10,328	68.4	3,150	21,719		X						
	430T-7H		192.8	12.2	6,610	43.8	5,000	34,474		X	X		X			
543	543Q-7XL	HP600XL	1121.3	70.7	38,445	254.6	1,220	8,410	Quintuplex			X			X	
	543Q-7L	HP600AL	612.6	38.6	21,003	139.1	2,169	14,952		X		P			X	
	543Q-7M	HP600AM	358.2	22.6	12,283	81.4	3,600	24,821		X		P			X	
	543Q-7H	HP600H	153.1	9.7	5,251	34.8	6,170	42,542					X	X		
550	550T-7D		612	38.6	20,983	139.0	5,000	34,474	Triplex-Piston					X		
	622T-8XL	T600-7	1039.6	65.6	35,643	236.1	1,640	11,307		X		X			X	
622	622T-8L	T600-5	530.4	33.5	18,186	120.5	2,220	15,307	Triplex		F		X		F	
	622T-8M	T600-4	339.5	21.4	11,639	77.1	3,705	25,546			F		X		F	
	622T-8MS	T600-3	190.9	12.0	6,547	43.4	6,170	42,542			F		X		F	
	625Q-7L	J-625-L	850.8	53.7	29,172	193.2	1,550	10,686		Quintuplex	X	X		X		
625Q-7M	J-625-M	544.5	34.4	18,671	123.7	3,150	21,719	X								
625Q-7H	J-625-H	306.3	19.3	10,502	69.6	5,000	34,474	X	X			X				
750	D-750LA		560	35.3	19,200	127.2	5,000	34,474	Triplex-Piston					X		
1069	C-1000*	C-1000	929	58.6	31,851	211.0	3,705	25,545	Triplex					X		

*C-1000 is also available in Forged Bronze and Forged Duplex SS

Single-Acting, Continuous Duty Pumps: Steel fluid ends are the standard material for primary pumps. Other metallurgies are available, subject to application.

Rated Horsepower (KW)	Pump Model No.	Maximum Displacement				Maximum Pressure			Type	Metallurgy					
		Gallons per minute (USGPM)	Liters per second (l/s)	Barrels per Day (BPD)	Cubic Meters per Hour (m ³ /hr)	Pounds per Square Inch (PSI)	Kilopascals (kPa)	CAS Cast Alloy Steel		CDPLX Cast Super Duplex Stainless Steel	PLSS Plate 316 Stainless Steel	PLSTL Plate Carbon Steel	FAST Forged Alloy Steel	Forged Stainless Steel	
6 (4)	MX-3M & MC	7.07	0.45	243	1.61	2,012	13,873	Simplex	X	X	X				
	MX-3H	2.34	0.19	81	0.69	6,000	41,369				X			X	
13 (10)	CX-5M & MC	16.16	1.02	555	3.67	2,012	13,873	Duplex	X	X	X			X	
	CX-5H	6.88	0.43	237	1.56	8,500	58,606				X			X	X
19 (14)	BX-10L & LC	45.90	2.90	1,574	10.42	832	5,733	Triplex	X	X	X	X			
	BX-10M & MC	30.30	1.91	1,039	6.88	2,012	13,873		X	X	X			X	
	BX-10H	11.47	0.72	394	2.61	8,500	58,606					X		X	X
29 (22)	BD-28L & LC	45.90	2.90	1,574	10.42	1,247	8,600	Triplex	X	X	X	X			
	BD-28M & MC	30.30	1.91	1,039	6.88	3,018	20,809		X	X				X	
	BD-28H	11.47	0.72	394	2.61	10,000	68,948					X		X	X
40 (30)	BD-28UH	4.48	0.28	154	1.02	20,000	137,896	Triplex						X	X
	BD-28UHI	4.93	0.31	170	1.12	20,000	137,896							X	X
33 (25)	BD-30L	71.00	4.48	2,435	16.12	1,362	9,392	Triplex	X	X	X	X			
	BD-30M	31.56	1.99	1,082	7.17	3,597	24,800		X	X	X	X			

National Oilwell Varco has produced this brochure for general information only, and it is not intended for design purposes. Although every effort has been made to maintain the accuracy and reliability of its contents, National Oilwell Varco in no way assumes responsibility for liability for any loss, damage or injury resulting from the use of information and data herein. All applications for the material described are at the user's risk and are the user's responsibility.

Corporate Headquarters
7909 Parkwood Circle Drive
Houston, Texas 77036
USA

© 2015 National Oilwell Varco | All Rights Reserved
DPF1000087-MKT-001 Rev 01