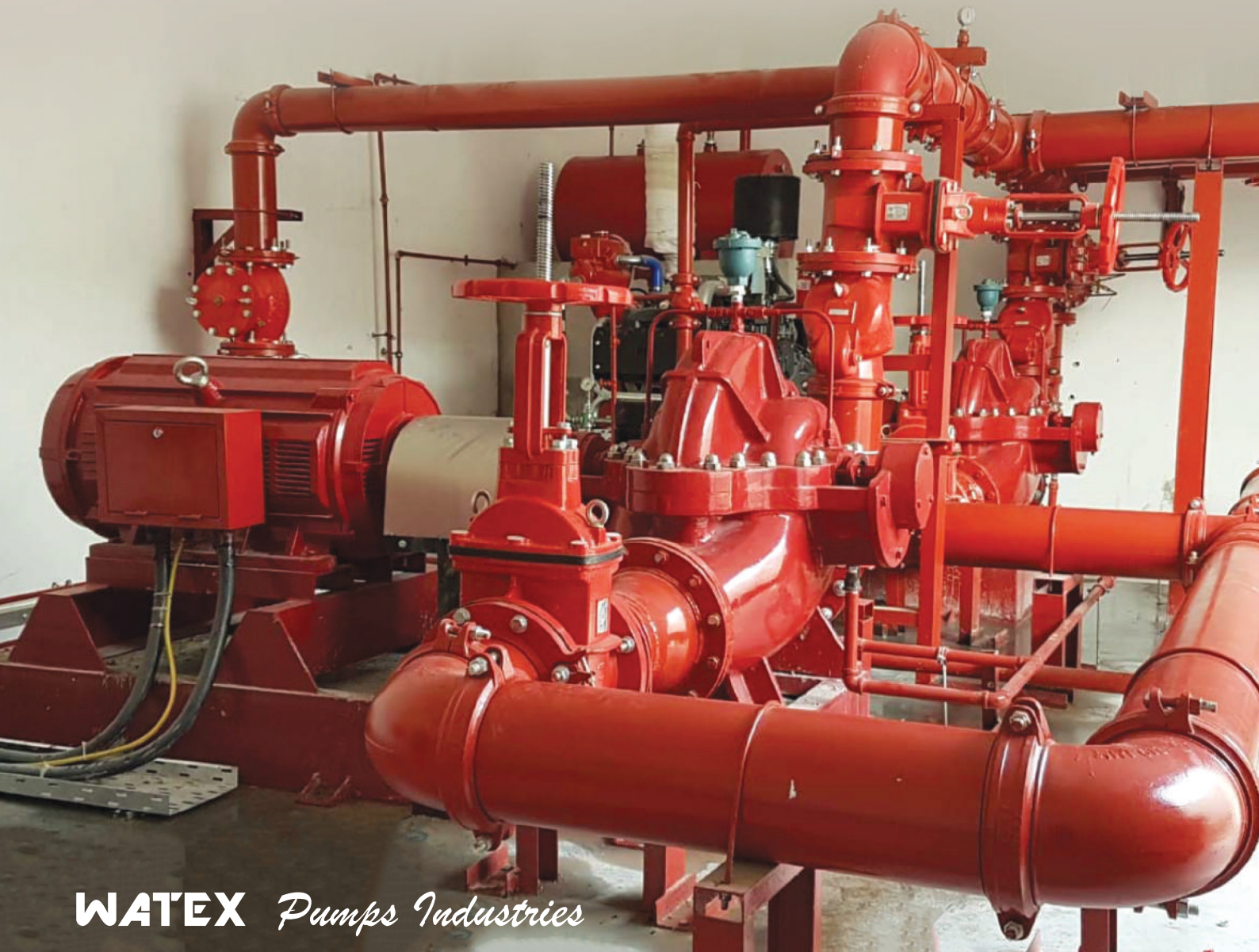




Non UL Fire Pumps

LOCAL ASSEMBLY



WATEX *Pumps Industries*

We provide a wide range of fire pump sets with different capacity range vary from 50 GPM up to 2500 GPM at 5, 6, 7, 8, 9, 10 bar pressure however we have ability to manufacture larger pump capacities as per customer's request. All the pump sets must be fully run tested for to ensure that no leak will occur at the required pressure. Moreover, a thoroughly test is conducted to ensure that the pump set is fully operating at the required capacity. A free of charge testing and commissioning will be provided.

Approved From Civil Defense Local assembled Fire Pump & Control Panel

Features

- Highly quality pressure indicator.
- Equipped with local assembly control panel made of high quality electrical component
- Supplied either with or without suction line.
- High quality diesel engine: Diesel engines Flow Range (50 – 2500 GPM)
Diesel engines pressure range (5 – 20 Bar)
- Equipped with suitable electrical motor
- Equipped with Heavy duty coupling
- Equipped with stainless steel jockey pump
- All the pump parts are equipped with Control fittings
- Equipped with pressure switches
- Equipped with flexible wires (RR type)



www.watexindustries.com
UAE-AJMAN-NEW INDUSTRIAL AREA