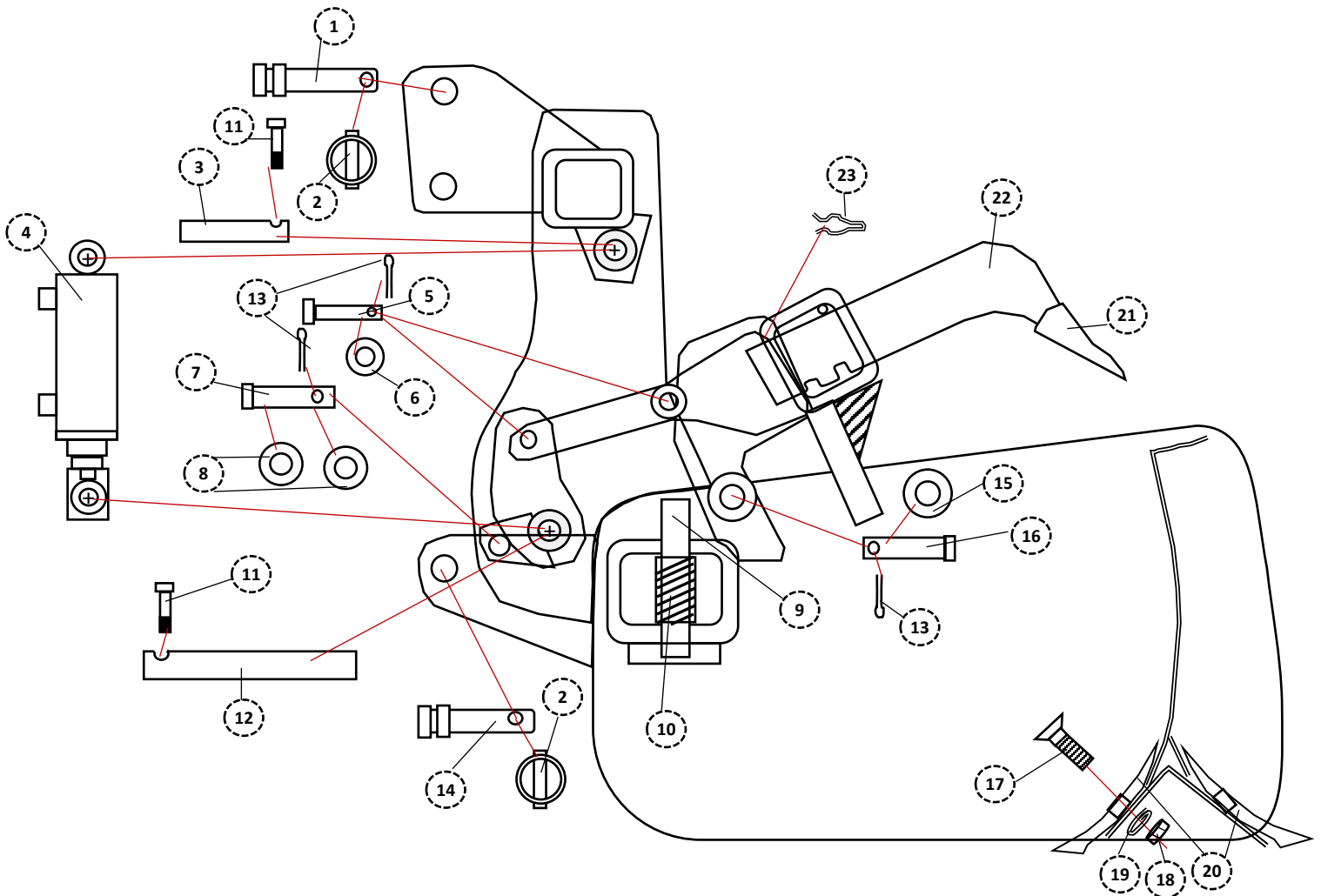


INDUSTRIAL BOX SCRAPERS

2C1 INDUSTRIAL BOX SCRAPER

EXPANDED PARTS INDEX



		42	48	54	60	
1	P075500C1TL	CAT I TOP LINK	1	1	1	1
2	P716175LY	LYNCH PIN 7/16" X 1 3/4"	3	3	3	3
3	R04AB001	TOP CYLINDER ROD	1	1	1	1
4	CI-S2X4-9	CYLINDER	1	1	1	1
5	P050175CL	1/2 X 1 3/4" CLEVIS PIN	2	2	2	2
6	W050SAEF	1/2" SAEF FLAT WASHER	6	6	6	6
7	P075300CL	CYLINDER/ TAILBOARD LOCK PIN	1	1	1	1
8	W075SAEF	BOTTOM CYLINDER PIN WASHER	1	1	1	1
9	R05B001	MAIN LOCK PIN	1	1	1	1
10	S1116350C0M	LOCK PIN SPRING	1	1	1	1
11	SS516075	5/16 X 3/4" SQUARE HEAD SET	2	2	2	2
12	R05B9	BELL CRANK SHAFT	1	1	1	1

		42	48	54	60	
13	P532150COT	COTTER PIN 5/32" X 1 1/2"	5	5	5	5
14	P078375C1D	7/8 X 3 3/4" CAT I DRAW PIN	2	2	2	2
15	W100SAEF	PIVOT EAR WASHER	4	4	4	4
16	P100258CLP	1 X 2 15/16" PLATED CLEVIS PIN	2	2	2	2
*17	B058200P	5/8 X 2" PLOW BOLTS	8	8	10	10
*18	N058H	5/8" HEX NUT	8	8	10	10
*19	W058L	5/8" LOCK WASHER	8	8	10	10
*	B058200PA	PLOW BOLT ASSEMBLY (3 Parts)	8	8	10	10
20	CE	CUTTING EDGE	2	2	2	2
21	H434T	REPLACEABLE SHANK TIP				
22	G163	4 X 4 SHANK	3	4	5	5
23	SR100	SHANK RETAINER CLIP	3	4	5	5

PLEASE NOTE: The illustrations above are for reference only. SUPERIOR IMPLEMENTS reserves the right to change or correct part numbers, descriptions or dimensions at any time. If you have specific questions about parts not specified in the illustration above, please contact your SUPERIOR IMPLEMENTS authorized dealer.