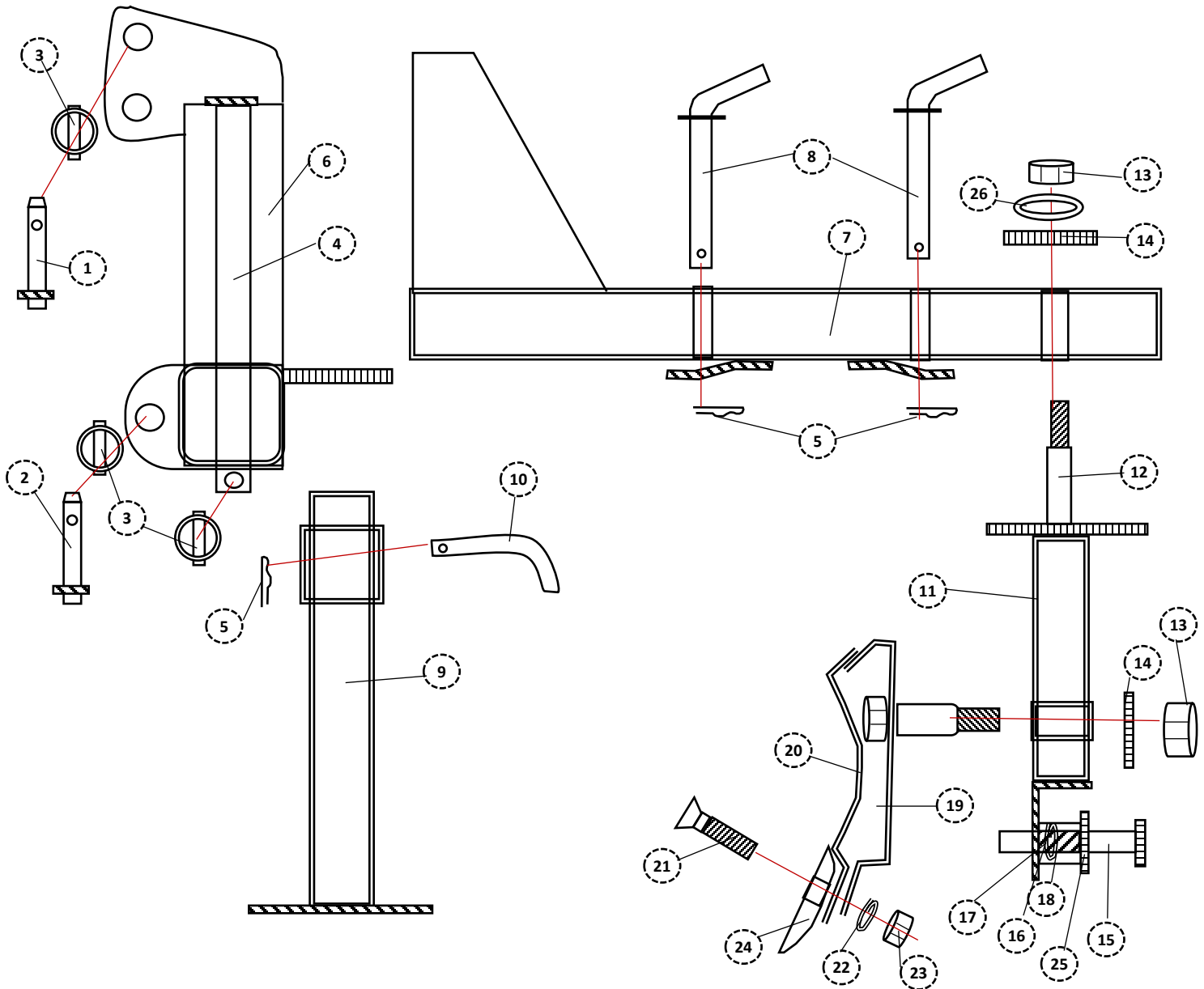


REAR BLADE

MEDIUM REAR BLADE

EXPANDED PARTS INDEX



			60	70
1	P075500C1TL	CAT I TOP LINK	1	1
2	P078375C1D	7/8 X 3/4" CAT I HEAVY DUTY	2	2
3	P716175LY	7/16 X 1 3/4" LYNCH PINS	4	4
4	R00404A	MAIN SHAFT ASSEMBLY	1	1
5	P11	HAIR PIN	4	4
6	F12401A1	3-POINT ASSEMBLY	1	1
7	BM042A	BOOM ASSEMBLY	1	1
8	R04134A	SWIVEL PIN ASSEMBLY	2	2
9	T01201A	JACK STAND ASSEMBLY	1	1
10	P050300BL	BENT "L" PIN		
11	PD131MA	PEDISTAL ASSEMBLY	1	1
12	R14RB01	KING/TILT PIN	2	2
13	N125L	1 1/4" KING/TILT PIN WASHER	2	2

			60	70
14	P02043	PIN WASHER	4	4
15	R04671	TILT LOCK PIN	1	1
16	S075200C0M	TILT COMPRESSION SPRING	1	1
17	W075L	3/4" LOCK WASHER	1	1
18	X174011	TILT PIN SPRING	1	1
19	P024151A	TILT PLATE ASSEMBLY	1	1
20	P0412(0)2A	MOLDBOARD ASSEMBLY	1	1
21	B058200P	5/8 X 2" PLOW BOLT	6	7
22	W058L	5/8" LOCK WASHER	6	7
23	N058H	5/8" HEX NUT	6	7
24	CE	CUTTING EDGE	1	1
25	W075F	3/4" FLAT WASHER	3	3
26	W125F	1 1/4" FLAT WASHER		

PLEASE NOTE: The illustrations above are for reference only. SUPERIOR IMPLEMENTS reserves the right to change or correct part numbers, descriptions or dimensions at any time. If you have specific questions about parts not specified in the illustration above, please contact your SUPERIOR IMPLEMENTS authorized dealer.