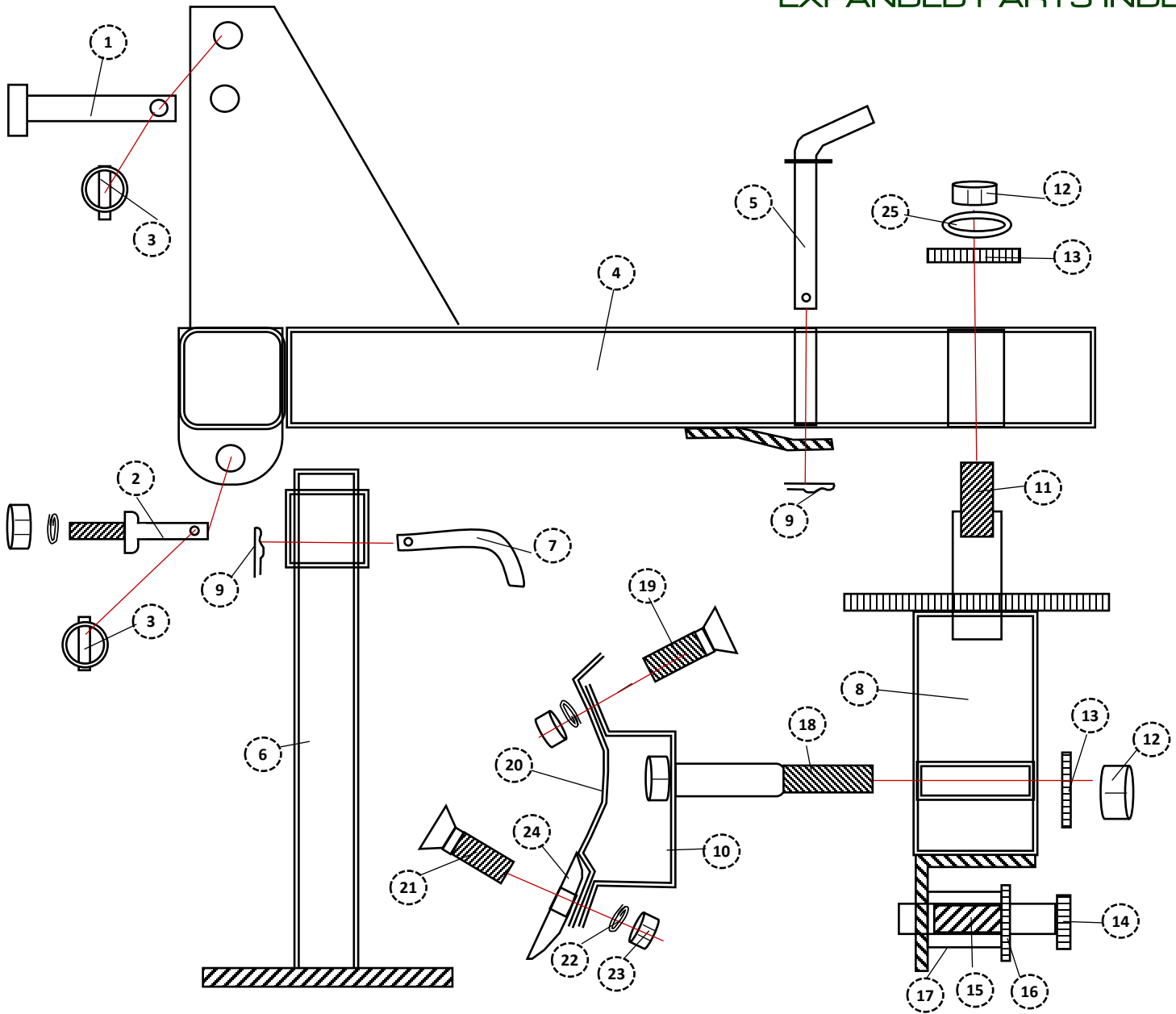


REAR BLADE

SMALL REAR BLADE

EXPANDED PARTS INDEX



1	P075500C1TL	CAT I TOP LINK	5	6	7
2	P078175C1IMP	CAT I IMP PIN	1	1	1
3	P716175LY	7/16 X 1 3/4" LYNCH PINS	2	2	2
4	BM038A	BOOM ASSEMBLY	3	3	3
5	R04134A	SWIVEL PIN ASSEMBLY	1	1	1
6	T01201A	JACK STAND ASSEMBLY	1	1	1
7	P050300BL	BENT "L" PIN	1	1	1
8	PD131A	PEDISTAL ASSEMBLY	1	1	1
9	P11	HAI PIN	3	2	2
10	P02213A	TILT PLATE ASSEMBLY	1	1	1
11	R14RB01	TILT PIN	1	1	1
12	N125L	1 1/4" LOCK NUT	4	2	2
13	P02043	PIN WASHER	2	2	2

14	R04671A	TILT LOCK PIN	5	6	7
15	S075200COM	TILT LOCK COMPRESSION SPRING	1	1	1
16	W075L	3/4" LOCK WASHER	1	1	1
17	X174011	TILT PIN SLEEVE	1	1	1
18	B125700	1 1/4 X 7" BOLT	1	1	1
19	B058150	5/8 X 1 1/2" BOLT	2	2	2
20	P014913/4/5	MOLDBOARD (RB5/RB6/RB7)	1	1	1
21	B058200P	5/8 X 2" PLOW BOLT	5	6	7
22	W058L	5/8" LOCK WASHER	7	8	9
23	N058H	5/8" HEX NUT	7	2	8
24	CE	CUTTING EDGE	1	1	1
25	W125F	1 1/4" FLAT WASHER	2	2	2
26	W075F	3/4" FLAT WASHER	2	2	2

PLEASE NOTE: The illustrations above are for reference only. SUPERIOR IMPLEMENTS reserves the right to change or correct part numbers, descriptions or dimensions at any time. If you have specific questions about parts not specified in the illustration above, please contact your SUPERIOR IMPLEMENTS authorized dealer.