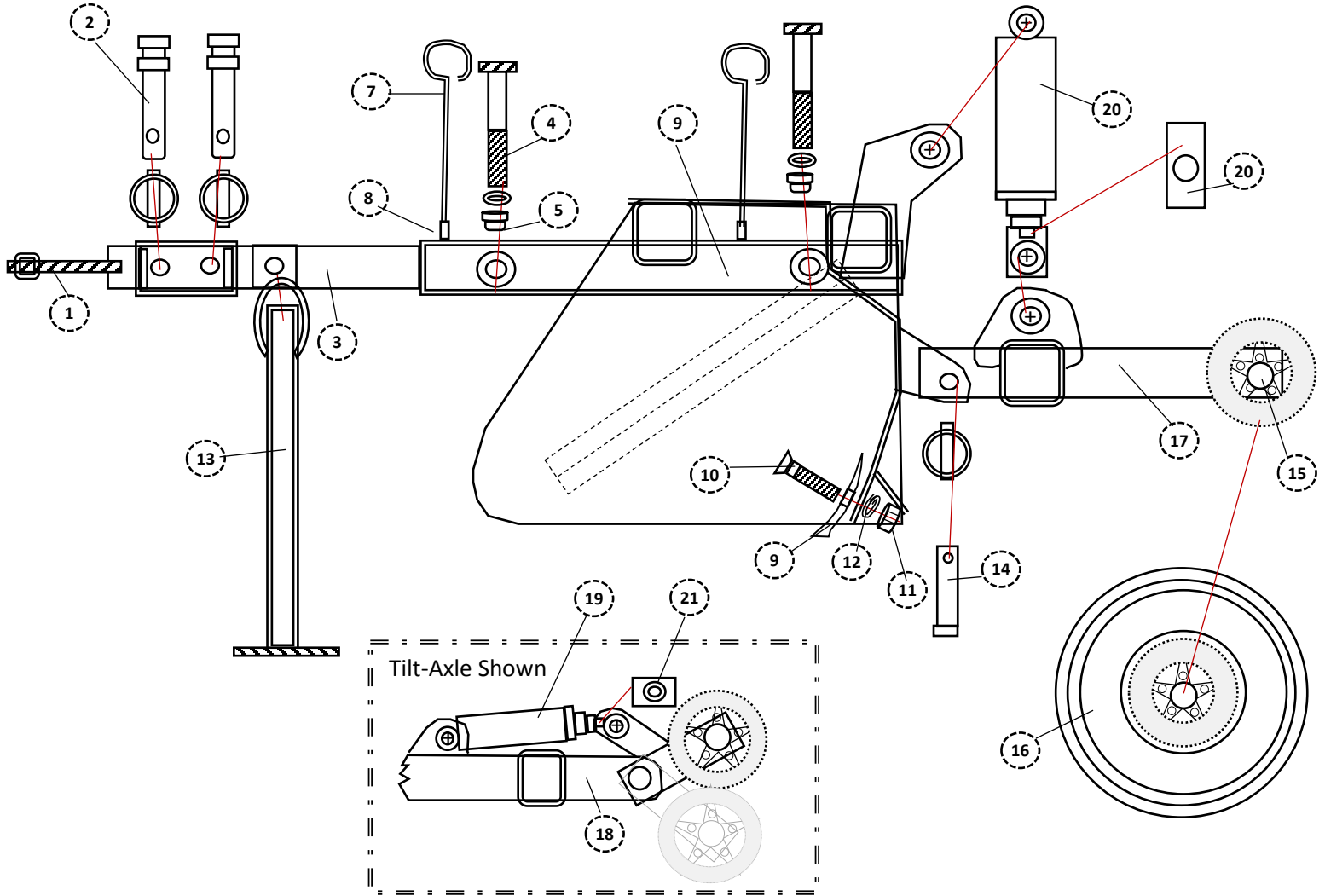


DRAG SCRAPER

UTILITY DRAG SCRAPER

EXPANDED PARTS INDEX



		8	10	12	14
1	HT001	SWIVEL BALL HITCH			
1	HT002	CLEVIS HITCH			
1	HT003	SWIVEL HITCH WITH SLOTTED HOLE			
1	HT004	SWIVEL HITCH WITH CLEVIS			
2	P100218CL	1 X 2 1/8" CLEVIS PIN	2	2	2
3	T11DS08	AP/HC/UTDS TONGUE	1	1	1
4	B100700-8	1 X 7" HEX HEAD CAP SCREW	2	2	2
5	W100F	1" FLAT WASHER	4	4	4
6	N100L	LOCK NUT	2	2	2
7	R01DS763	HOSE HOLDER	2	2	2
8	N038CPL	3/8" COUPLER NUT	2	2	2
9	CE	CUTTING EDGE	1	1	1
10	B058200P	5/8 X 2" PLOW BOLTS	8	10	12

		8	10	12	14
11	N058H	HEX NUT	8	10	12
12	W058L	LOCK WASHER	8	10	12
13	WF373643	SWIVEL JACK WITH SNAP RING	1	1	1
14	R08DS01A	AXLE ARM (PIN & PIN TOP)			
15	HU545-1	HUB (NO SPINDLE)			
16	NT30	TIRE SET			
17	AX003	NON TILT AXLE (UTDS8)			
17	AX004	NON TILT AXLE (UTDS10/12/14)			
18	UTKA-8	TILT AXLE			
18	UTKA-10-12	TILT AXLE			
19	C38	3 X 8" CYLINDER			
20	TL01	3X8 CYLINDER TRANSPORT LOCK			
21	TL03	TILT TRANSPORT LOCK			

PLEASE NOTE: The illustrations above are for reference only. SUPERIOR IMPLEMENTS reserves the right to change or correct part numbers, descriptions or dimensions at any time. If you have specific questions about parts not specified in the illustration above, please contact your SUPERIOR IMPLEMENTS authorized dealer.