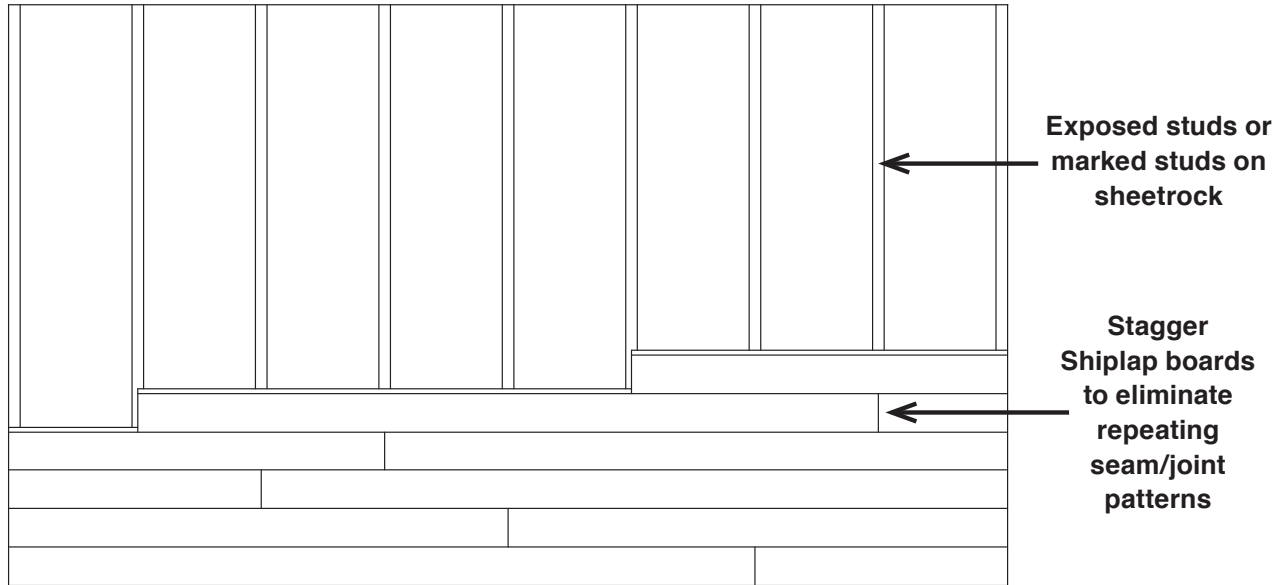


# American Pacific's Shiplap Installation Instructions

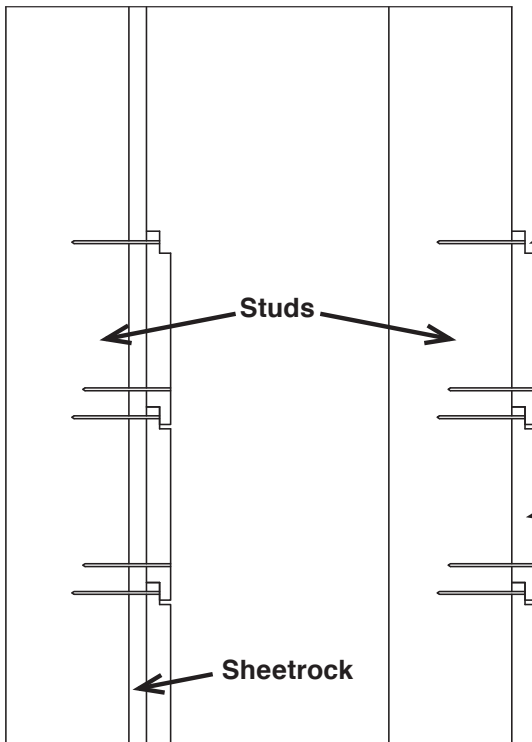
**Step 1)** If sheetrock has been pre-installed, mark stud lines utilizing a stud finder. If installing directly to studs with a vapor barrier in place, proceed to Step 2.

**Step 2)** Starting at the bottom, draw a level line 5-1/2" from the floor. Align the top lip of the Shiplap boards to the level line and attach using 8d finish nails or 16ga brad nails x 2-1/2" long into the studs. One nail/brad should be placed inside the top lip and one approximately 1" from the bottom of the Shiplap board. (See Fig. B & C) Repeat process until first row is complete. Stagger the next row of Shiplap boards over the joints of the previous row and cut pieces as needed for each additional row. (See Fig. A) **NOTE:** Adhesive may be applied to studs or sheetrock if desired.

**Wall Layout (Fig. A)**



**Section View (Fig. B)**



Sheetrock  
Pre-Installed

Directly  
to Studs

**Front View (Fig. C)**

