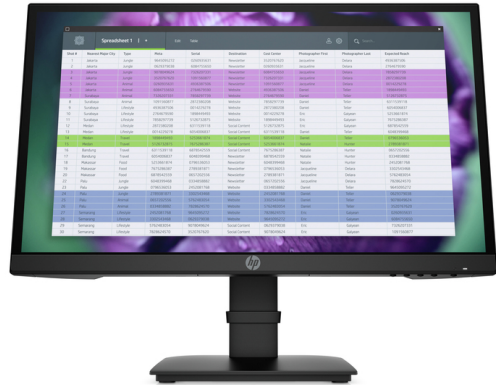




# HP P22 G4 22 FHD Monitor series

The amazingly affordable business display.

Put your content front and center on the HP P22 G4 FHD Monitor. The stylish, sleek design delivers essential presentation features, visual comfort, and advanced connectivity at a remarkable price point.



## Crisp images for all your content.

- Easily navigate documents and spreadsheets and work in multiple applications side by side on the 21.5-inch diagonal Full HD IPS screen with vibrant 1920 x 1080 resolution.

## Stylishly designed.

- Complement your workspace with a contemporary display that has a 3-sided micro-edge bezel for practically unlimited sightlines and virtually seamless multi-display<sup>1</sup> setups. See clearly from almost anywhere in the room with 178° viewing angles.

## Versatile connectivity.

- Quickly connect to your devices and additional displays through the HDMI and DisplayPort™ connectors. Get legacy device compatibility from the VGA.

## Featuring

- Attach your HP PC or select HP Thin Client directly behind the display.
- Filter blue light emission and shift colors to a warmer spectrum for more comfortable viewing with HP Low Blue Light mode.
- Free up valuable desk space with mounting options enabled by the 100-mm VESA pattern.
- Energy efficiency and environmental sustainability are built into every ENERGY STAR® and TCO certified, EPEAT® 2019 registered, and low halogen display.
- Customize a total solution with options designed for your display, like the HP S101 Speaker Bar.
- We're just a call or click away. Rest assured that your IT investment is supported with our three-year standard limited warranty. To extend your protection, select an optional HP Care Pack.

## HP P22 G4 22 FHD Monitor series Specifications Table



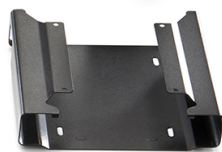
Display type	IPS
Panel Active Area	47.6 x 26.77 cm
Display size (diagonal)	21.5"
Viewing angle	178°
Brightness	250 cd/m <sup>2</sup> <sup>1</sup>
Contrast ratio	1000:1 static; 8000000:1 dynamic <sup>1</sup>
Response Ratio	5ms GtG (with overdrive) <sup>1</sup>
Product colour	Black
Aspect ratio	16:9 <sup>1</sup>
Native resolution	FHD (1920 x 1080)
Resolutions supported	1024 x 768; 1280 x 1024; 1280 x 720; 1280 x 800; 1366 x 768; 1440 x 900; 1600 x 900; 1680 x 1050; 1920 x 1080; 640 x 480; 720 x 400; 800 x 600
Display features	Asset control; On-screen controls; Plug and Play; User controls; Low blue light mode; Anti-glare
User controls	Brightness; Color control; Exit; Image control; Information; Management; Power control; Input control; Menu control
Input signal	1 DisplayPort™ 1.2 in (with HDCP support); 1 HDMI 1.4 (with HDCP support); 1 VGA
Environmental	Operating temperature: 5 to 35°C; Operating humidity: 20 to 80% non-condensing
Power	Input voltage 100 to 240 VAC
Power consumption	21 W (maximum), 19 W (typical), 0.3 W (standby)
Dimensions	49.73 x 4.59 x 30.11 cm (Without stand.)
Weight	4.14 kg (With stand.)
Ergonomic features	Tilt: -5 to +23°
Height adjustment range	No height adjust
Pivot	No pivot
Physical security features	Security lock-ready <sup>3</sup>
Energy efficiency compliance	ENERGY STAR® certified; EPEAT® 2019 registered <sup>4</sup>
Certification and compliance	Australian-New Zealand MEPS; BSMI; CB; CCC; CE; CEL; CSA; EAC; Energy Star; FCC; ICES; ISO 9241-307; KC; KCC; NOM; PSB; TUV-S; UL; VCCI; Vietnam MEPS; WEEE; ISC
Environmental specifications	Arsenic-free display glass; Low halogen; Mercury-free display backlights; TCO Certified <sup>2</sup>
What's in the box	HDMI cable; VGA cable; AC power cable

## HP P22 G4 22 FHD Monitor series

### Accessories and services (not included)

---

#### HP Desktop Mini Security/Dual VESA Sleeve v2



Wrap your HP Desktop Mini PC in the HP Desktop Mini Security/Dual VESA Sleeve v2 to securely mount it—with or without an Expansion Module<sup>1</sup>—behind your display, position the solution on a wall, and lock it down with the integrated security bracket and optional HP Ultra-Slim Cable Lock.

**Product number:** 2JA32AA

#### HP S101 Speaker Bar



Add rich stereo audio to select HP displays<sup>1</sup> without crowding your desk with the HP S101 Speaker Bar, which fits neatly underneath the display head and connects through USB.

**Product number:** 5UU40AA

#### HP Quick Release Bracket 2



Use the HP Quick Release Bracket 2 to attach your HP Desktop Mini to an HP display<sup>1</sup> and a variety of stands, arms or wall mounts.<sup>2</sup> The failsafe "Sure-Lock" mechanism snaps the PC securely in place, and can be further secured with a theft-deterrent security screw.

**Product number:** 6KD15AA

#### HP Sure Key Cable Lock



Take the guess work out of securing your notebook, display, dock, and accessories with the removable, interchangeable heads of the HP Sure Key Cable Lock.<sup>1</sup>

**Product number:** 6UW42AA

#### HP Adjustable Dual Display Stand



The HP Adjustable Dual Display Stand allows you to use two displays to maximize your productivity and optimize efficiency. Either or both displays can be rotated to landscape or portrait orientation, and the stand is depth-, height-, tilt-, and angle-adjustable so you can view both screens at eye-level as well as slightly facing each other, letting you track multiple applications and information sources at the same time. Integrated base rollers let you rotate the stand so you can more easily share your work.

**Product number:** AW664AA

#### HP 5-year Next Business Day Onsite Standard Monitor Hardware Support



HP Care Pack

Receive 5 years of next business day onsite repair from an HP-qualified technician for your computing device, if the issue cannot be solved remotely. For more information on Care Pack services, please visit [www.hp.com/go/cpc](http://www.hp.com/go/cpc).

**Product number:** U7935E

## HP P22 G4 22 FHD Monitor series

### Messaging Footnotes

<sup>1</sup> Each display sold separately.

<sup>2</sup> HP Desktop Mini, HP Chromebox, and HP Thin Client sold separately. Requires HP B300 PC Mounting Bracket for Monitors, sold separately.

<sup>3</sup> Mounting hardware sold separately.

<sup>4</sup> Each accessory sold separately.

<sup>5</sup> Based on US EPEAT® registration according to IEEE 1680.1-2018 EPEAT®. Status varies by country. Visit [www.epeat.net](http://www.epeat.net) for more information.

<sup>6</sup> External power supplies, power cords, cables and peripherals are not Low Halogen. Service parts obtained after purchase may not be Low Halogen.

<sup>7</sup> HP Care Packs sold separately. Service levels and response times for HP Care Packs may vary depending on your geographic location. Service starts on date of hardware purchase. Restrictions and limitations apply. For details, visit [www.hp.com/go/cpc](http://www.hp.com/go/cpc). HP Services are governed by the applicable HP terms and conditions of service provided or indicated to Customer at the time of purchase. Customer may have additional statutory rights according to applicable local laws, and such rights are not in any way affected by the HP terms and conditions of service or the HP Limited Warranty provided with your HP Product.

### Technical Specifications Footnotes

<sup>1</sup> All specifications represent the typical specifications provided by HP's component manufacturers, actual performance may vary either higher or lower.

<sup>2</sup> External power supplies, power cords, cables and peripherals are not Low Halogen. Service parts obtained after purchase may not be Low Halogen.

<sup>3</sup> Lock is sold separately.

<sup>4</sup> EPEAT® 2019 registered where applicable. EPEAT® registration varies by country. See [www.epeat.net](http://www.epeat.net) for registration status by country.

Sign up for updates [hp.com/go/getupdated](http://hp.com/go/getupdated)

© Copyright 2020 HP Development Company, L.P. The information contained herein is subject to change without notice. The only warranties for HP products and services are set forth in the express warranty statements accompanying such products and services. Nothing herein should be construed as constituting an additional warranty. HP shall not be liable for technical or editorial errors or omissions contained herein.

DisplayPort™ and the DisplayPort™ logo are trademarks owned by the Video Electronics Standards Association (VESA®) in the United States and other countries. ENERGY STAR is a registered trademark owned by the U.S. Environmental Protection Agency.

4AA7-8265EEAP, September 2020

--

