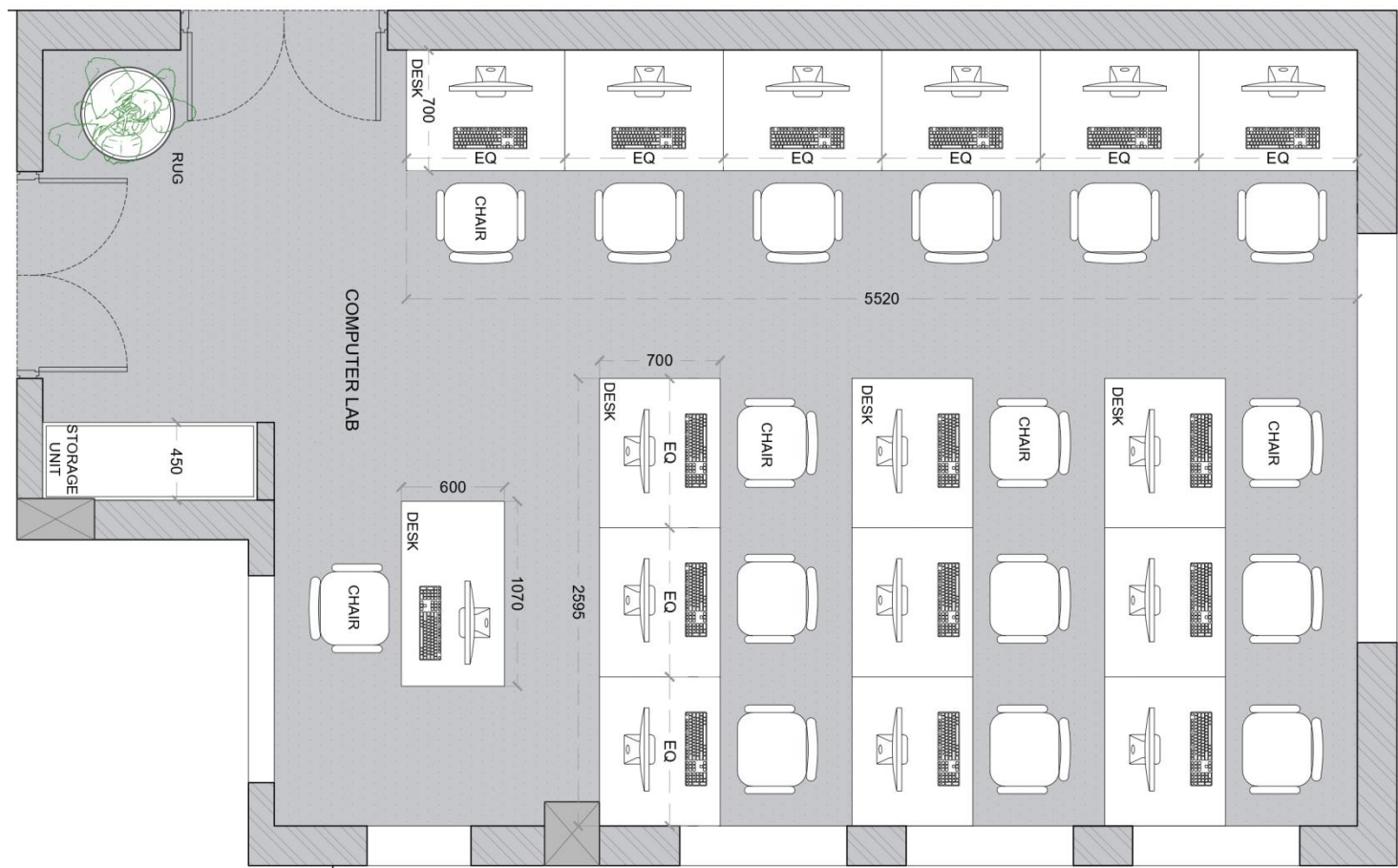


PROJECT: ST. JOSEPH'S INTERNATIONAL
SCHOOL_INTERNAL SPACE PLANNING
DESIGNED BY: AR. VEDIKA ADUKIA
CONTACT: +91-9769995595



GROUND FLOOR

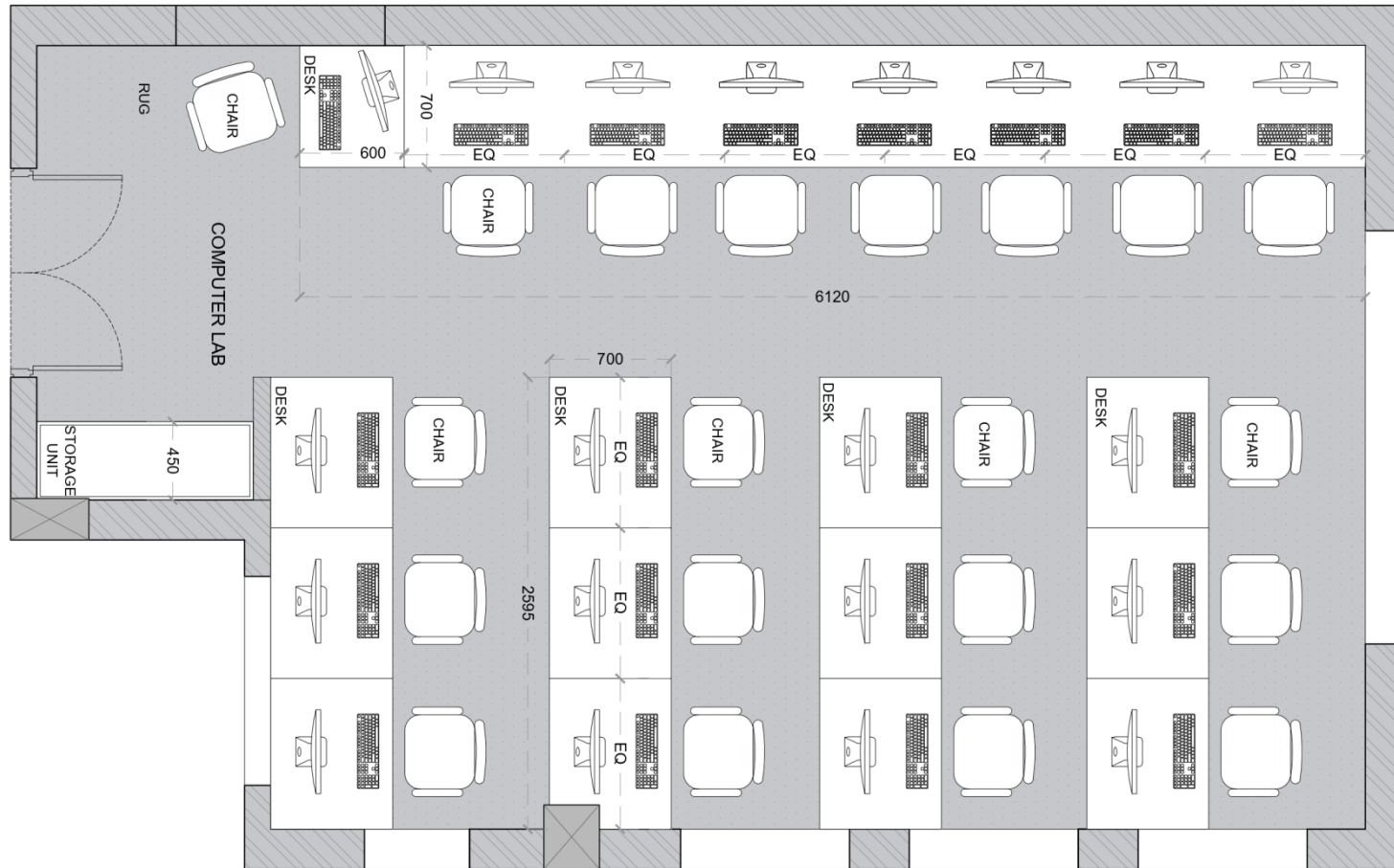
COMPUTER LAB | LAYOUT_OPTION 1_ PREFERRED OPTION



PROS & CONS

- Can be made using existing furniture and space.
- Comfortable spacing for each student
- Space for storage and teachers desk.
- Accommodates only 15 students

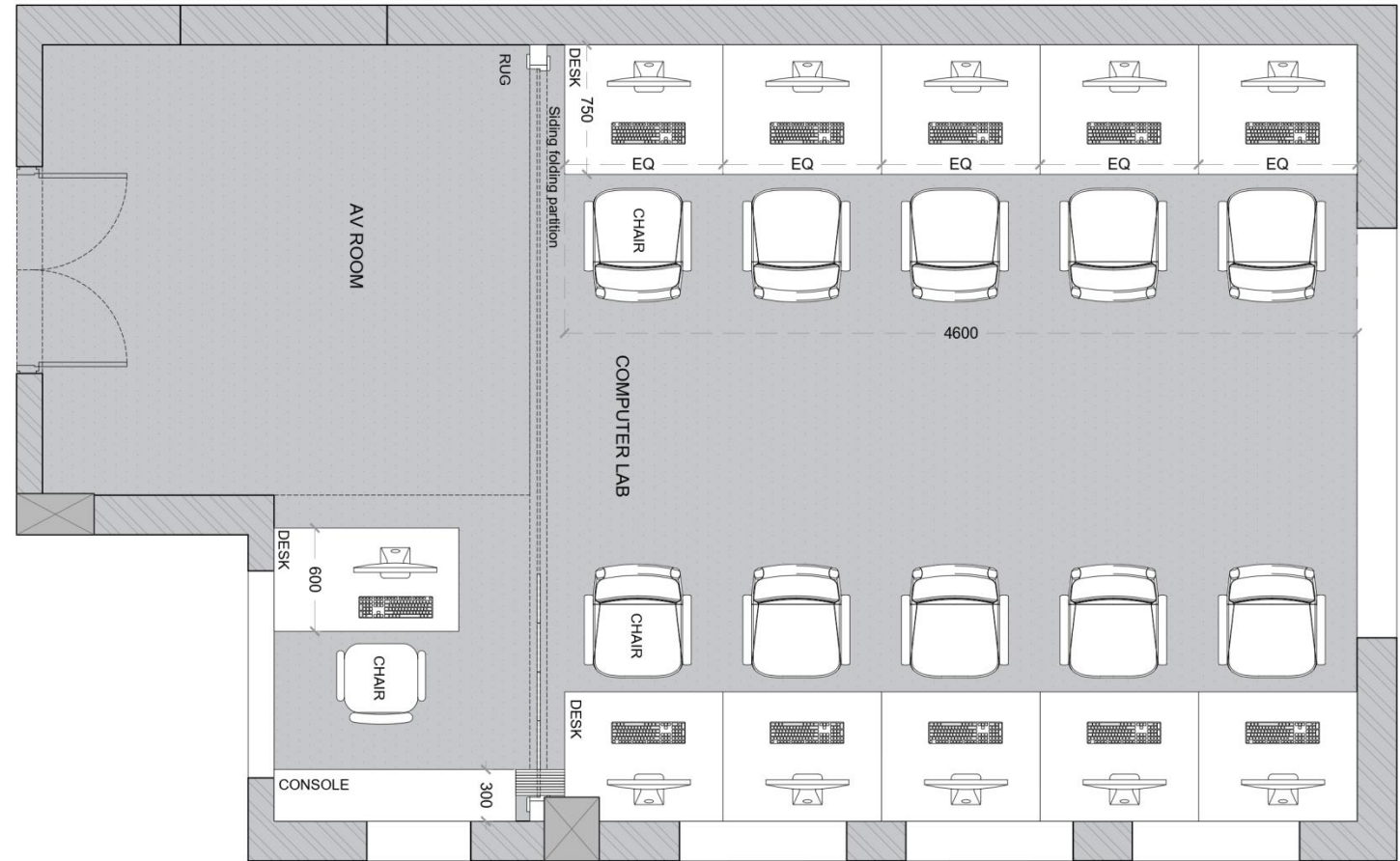
COMPUTER LAB | LAYOUT_OPTION 2



PROS & CONS

- Can be made using existing furniture.
- Compact spacing for each student might not be suitable for examination.
- Space for storage and teachers desk.
- Accommodates 19 students
- Civil work needed to close back door.
- Do we require an AV room or more student accommodation ? What's the priority?
- For what purpose will the lab used for only examination or regular lectures too ?

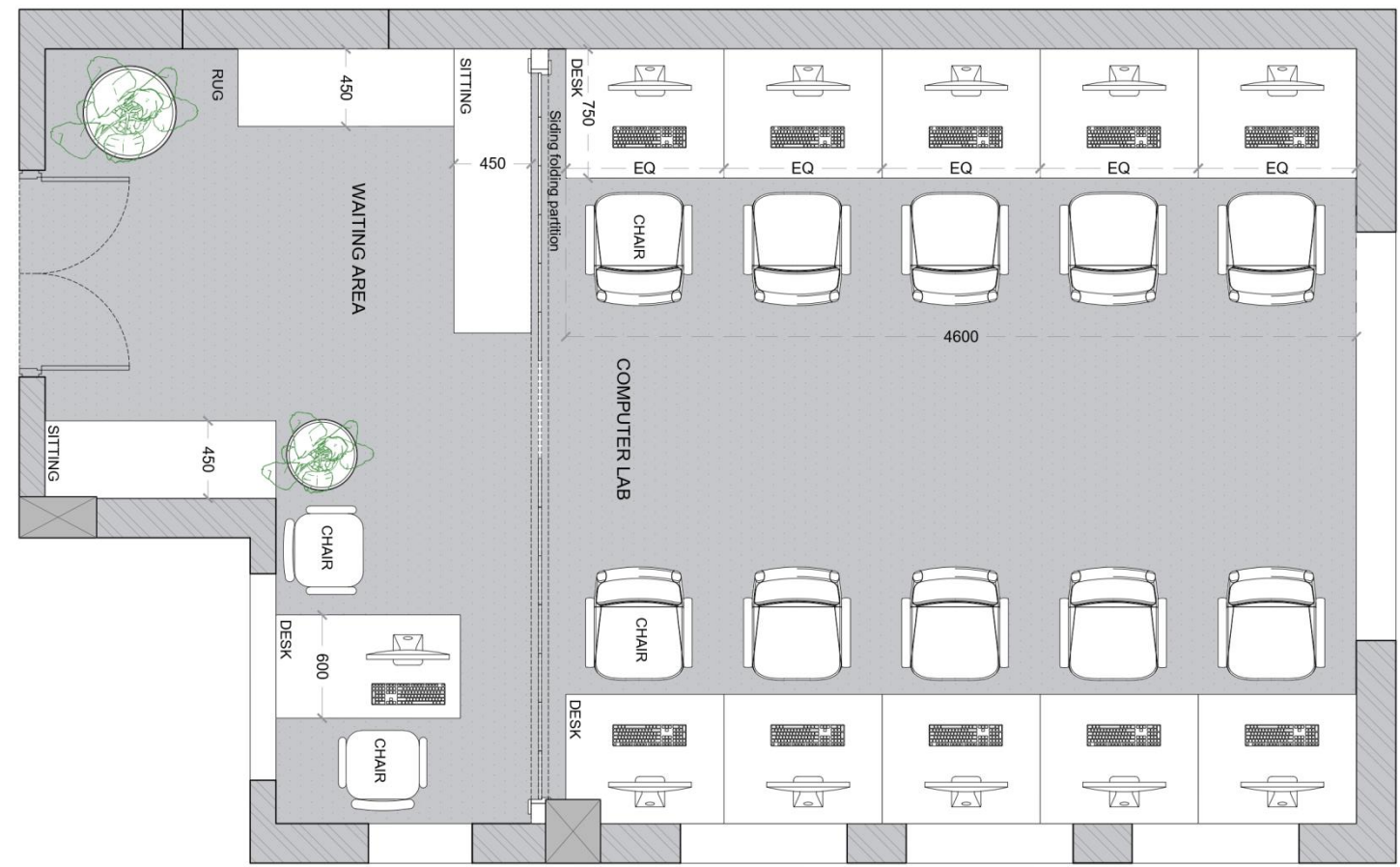
COMPUTER LAB | LAYOUT_OPTION 3A



PROS & CONS

- Can be made using existing furniture.
- Comfortable spacing for each student
- Space for storage and teachers desk.
- Flexible space option
- AV room + Waiting room + additional PC provision.
- Civil work needed to close back door.
- Accommodates only 10 students

COMPUTER LAB | LAYOUT_OPTION 3B

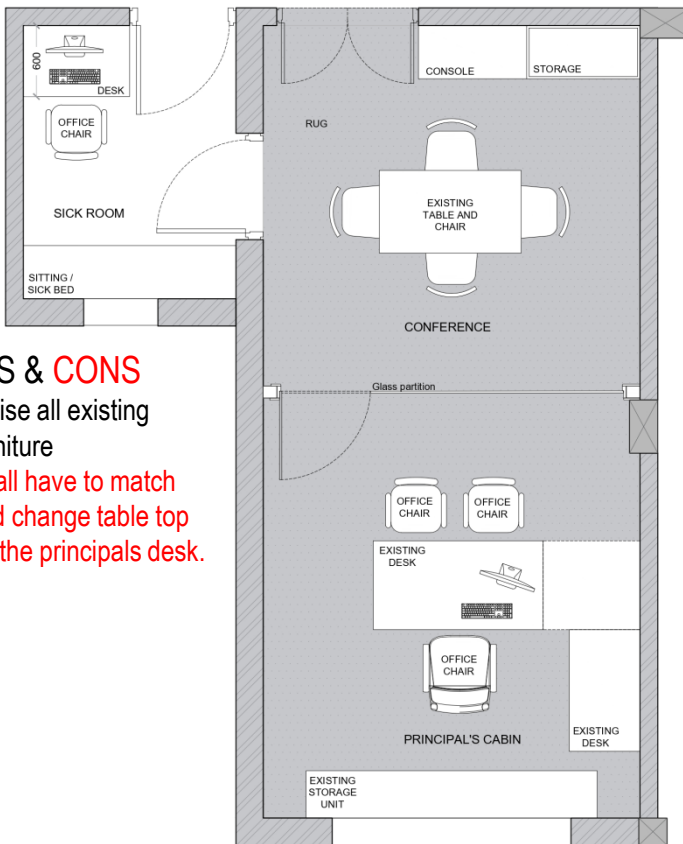


PROS & CONS

- Can be made using existing furniture.
- Comfortable spacing for each student
- Space for storage and teachers desk.
- Flexible space option
- AV room + Waiting room + additional PC provision.
- Civil work needed to close back door.
- Accommodates only 10 students

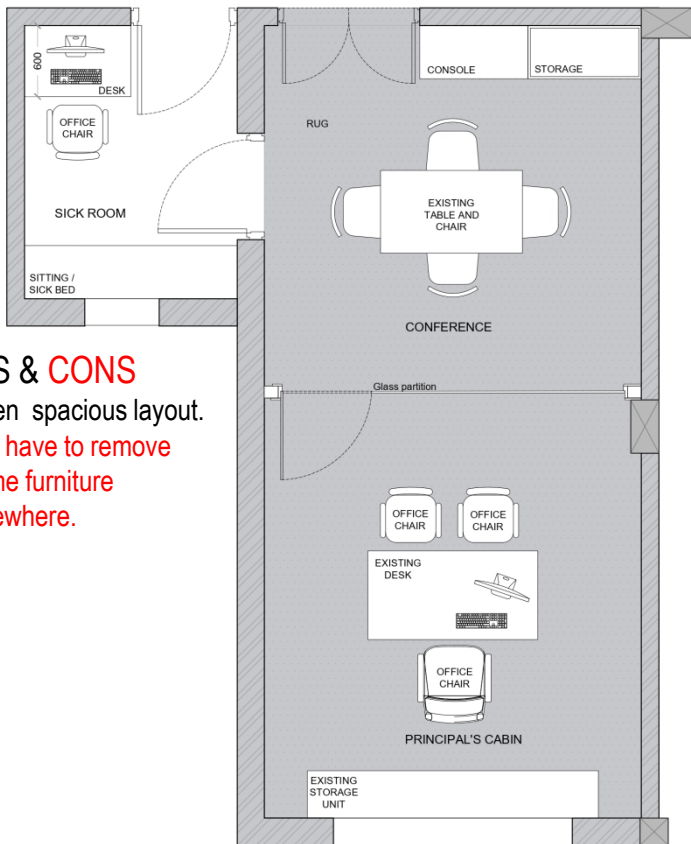


PRINCIPAL'S CABIN | LAYOUT_OPTION 1&2_PREFERED OPTION 2



PROS & CONS

- Utilise all existing furniture
- Shall have to match and change table top for the principals desk.

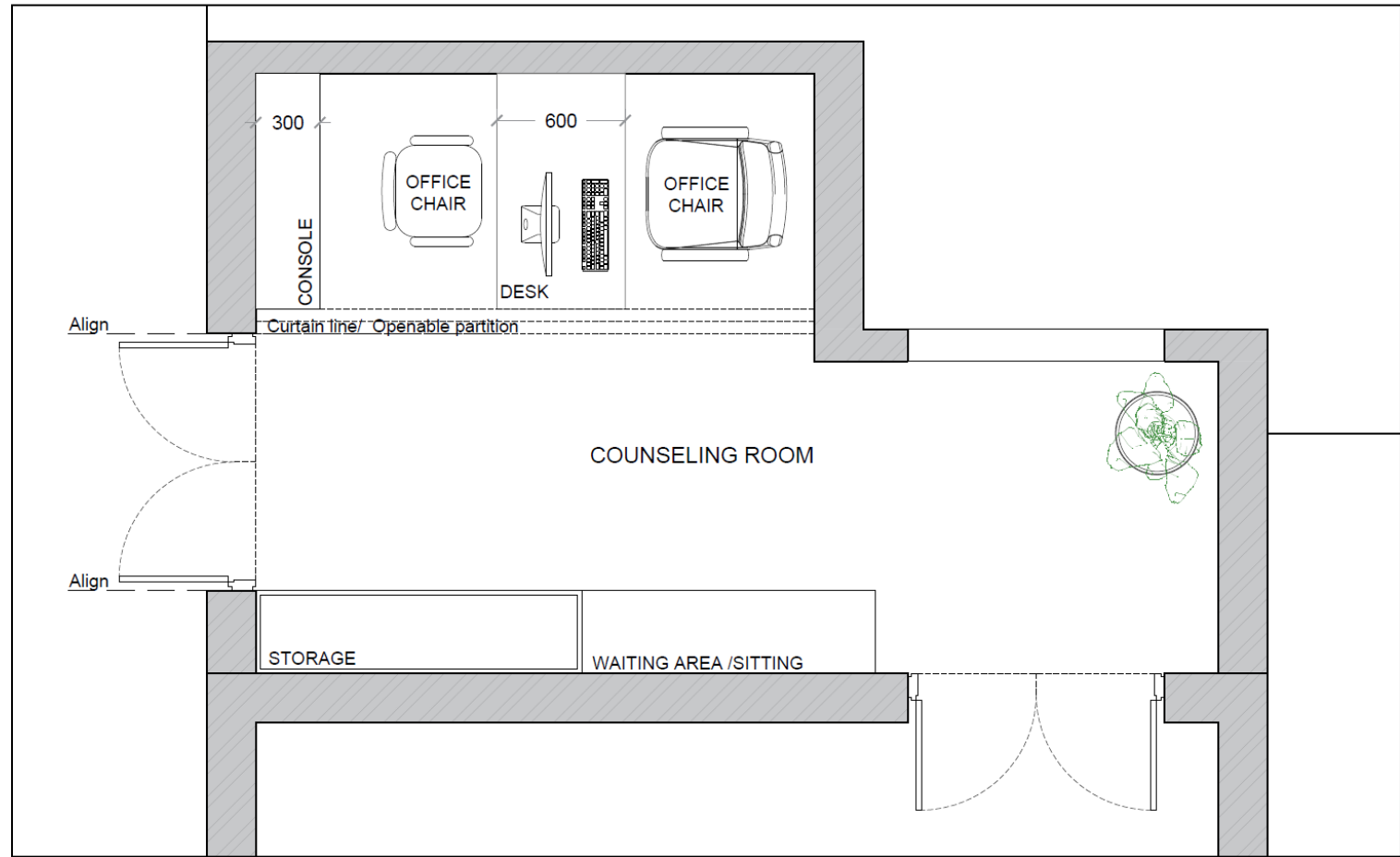


PROS & CONS

- Open spacious layout.
- Will have to remove some furniture elsewhere.

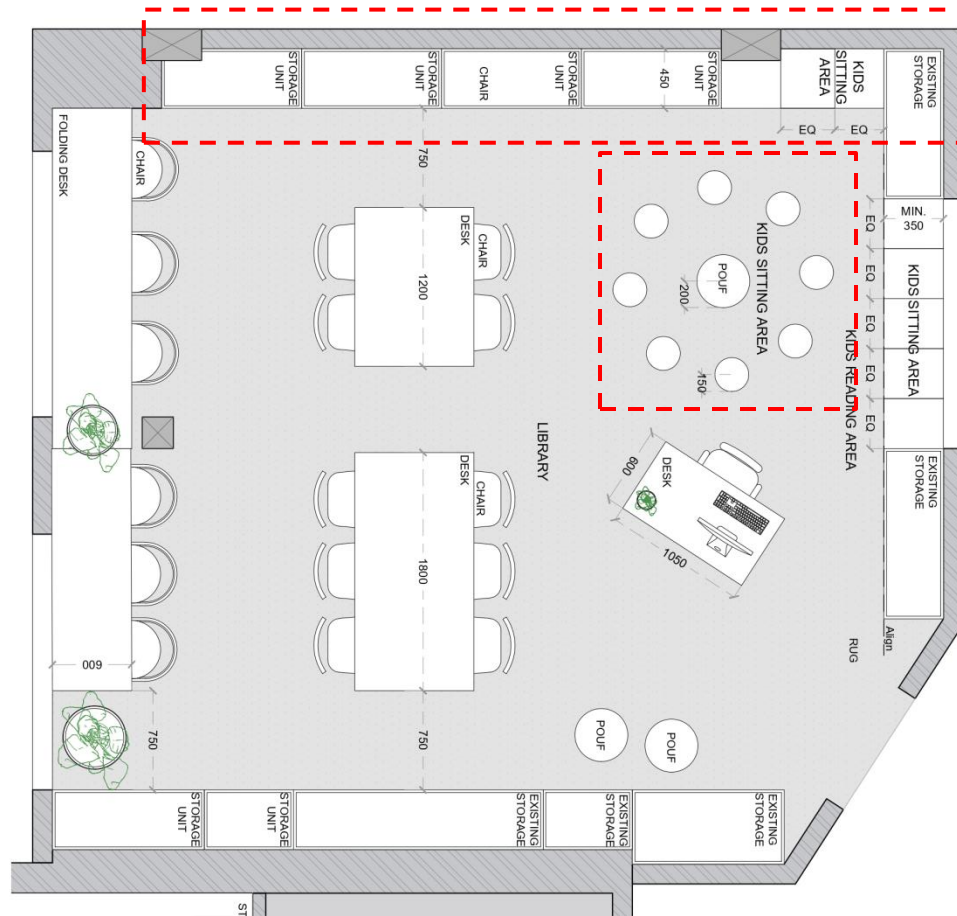


COUNSELING ROOM | LAYOUT



FIRST FLOOR

LIBRARY| LAYOUT_OPTION 1_ PREFERRED OPTION



Seating +
Storage option
can be
explored.

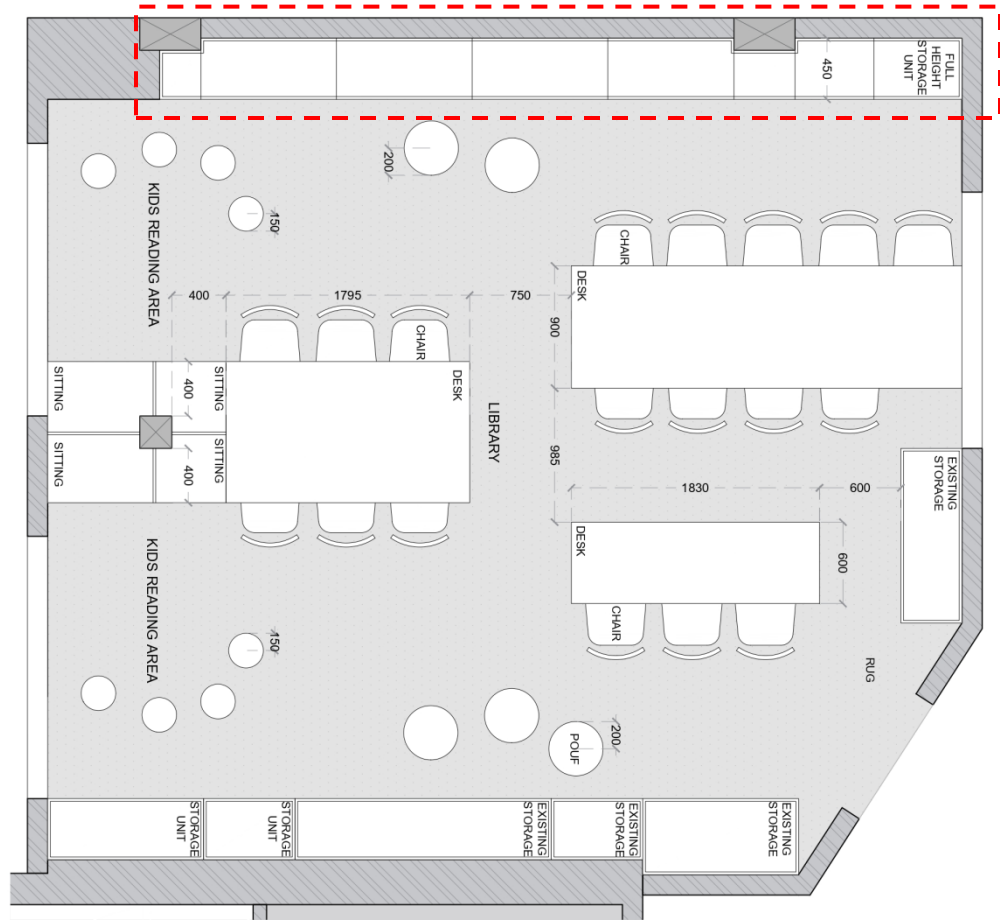
Can be converted
to seating for
primary/secondary
students

PROS & CONS

- Segregated reading spaces for grownups and kids.
- Interesting space options to read books.
- Ample storage for books.
- Laptop station for research work near the window.
- Space for librarian.
- Accommodates 16 students, however the kids area can be converted to sitting for more.



LIBRARY | LAYOUT_OPTION 2

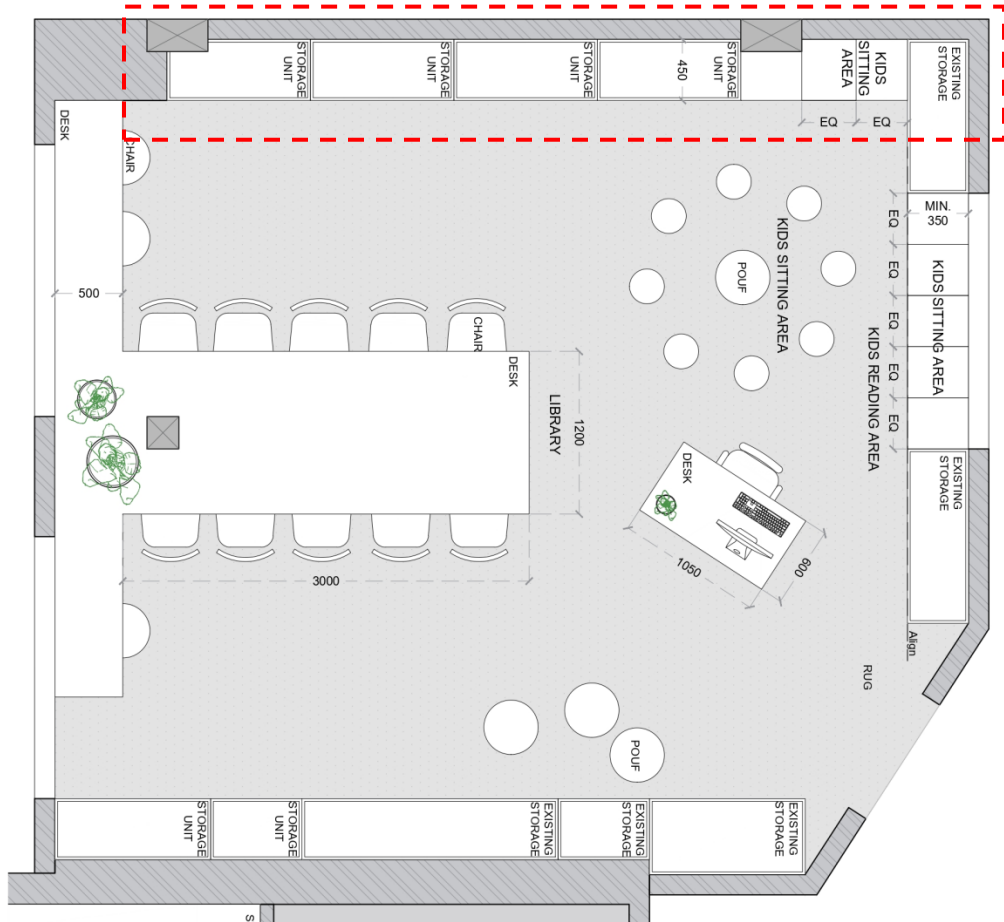


Seating + Storage option can be explored.

PROS & CONS

- Segregated reading spaces for grownups and kids.
- Interesting space options to read books.
- Ample storage for books.
- Laptop station for research work on long desk .
- No space for librarian.
- Accommodates 23 students, however the kids area can be converted to sitting for more.

LIBRARY | LAYOUT_OPTION 3

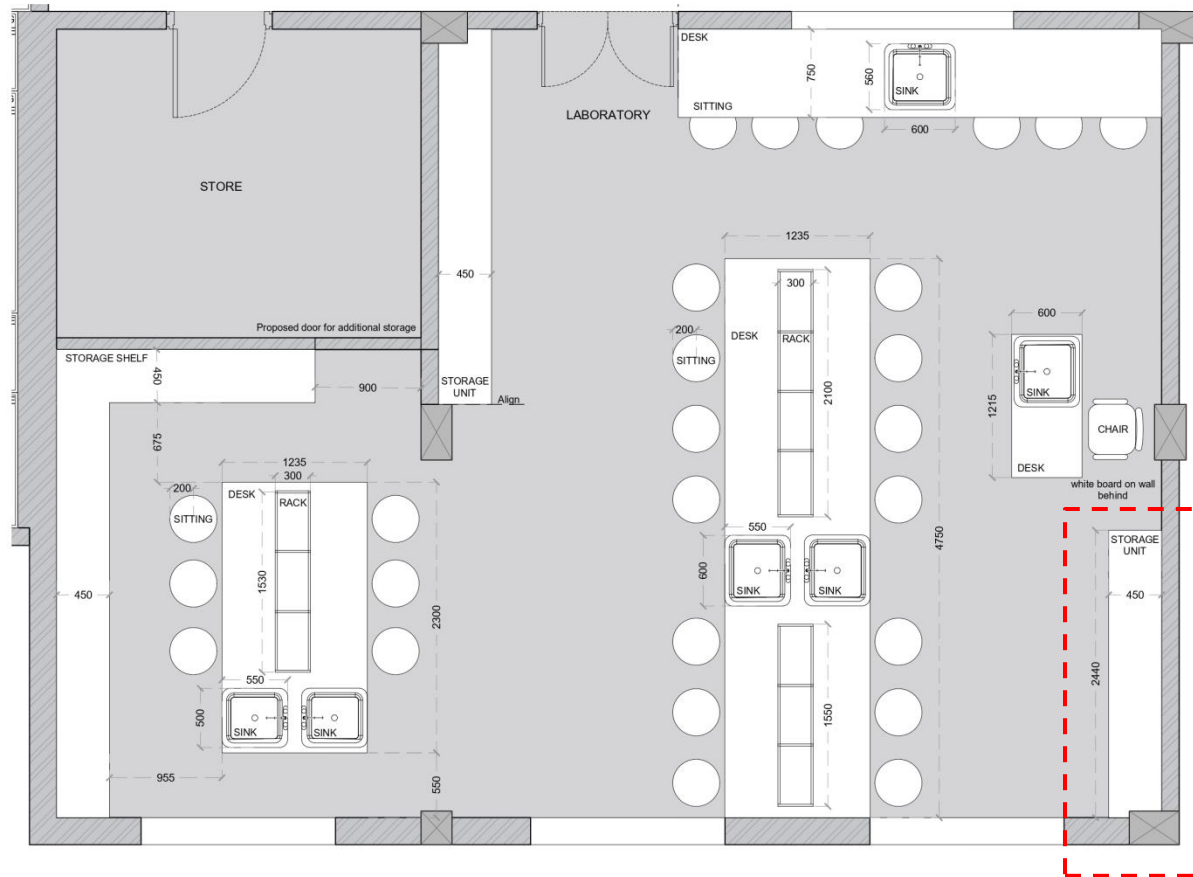


Seating +
Storage option
can be
explored.

PROS & CONS

- Segregated reading spaces for grownups and kids.
- Ample storage for books.
- Laptop station for research work near window facing sitting.
- Space for librarian.
- Accommodates 16 students, however the kids area can be converted to sitting for more.
- All students clustered in one area.
- Bulky setup towards the South end.
- Do we need space for a librarian ?
- Do we require a separate kids reading space ? Its nice to have one to make the space more fun and playful.

LABORATORY | LAYOUT_OPTION 1_ PREFERRED OPTION



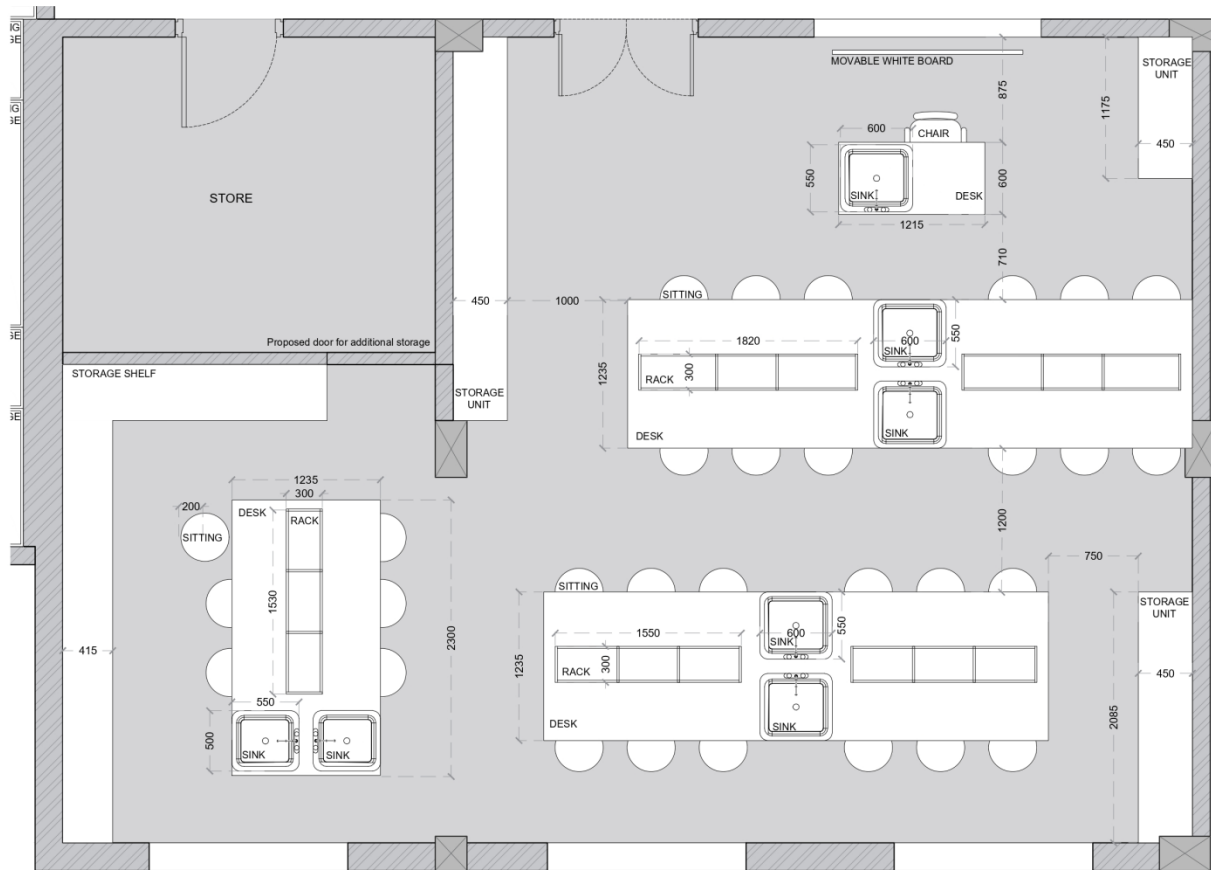
PROS & CONS

- Good storage and circulation space.
- Interactive setup.
- Teacher occupies a central position in the class
- Accommodates 26 student. (Can reduce storage and add sitting).

- Can make this into a work desk for 4 students



LABORATORY | LAYOUT_OPTION 2

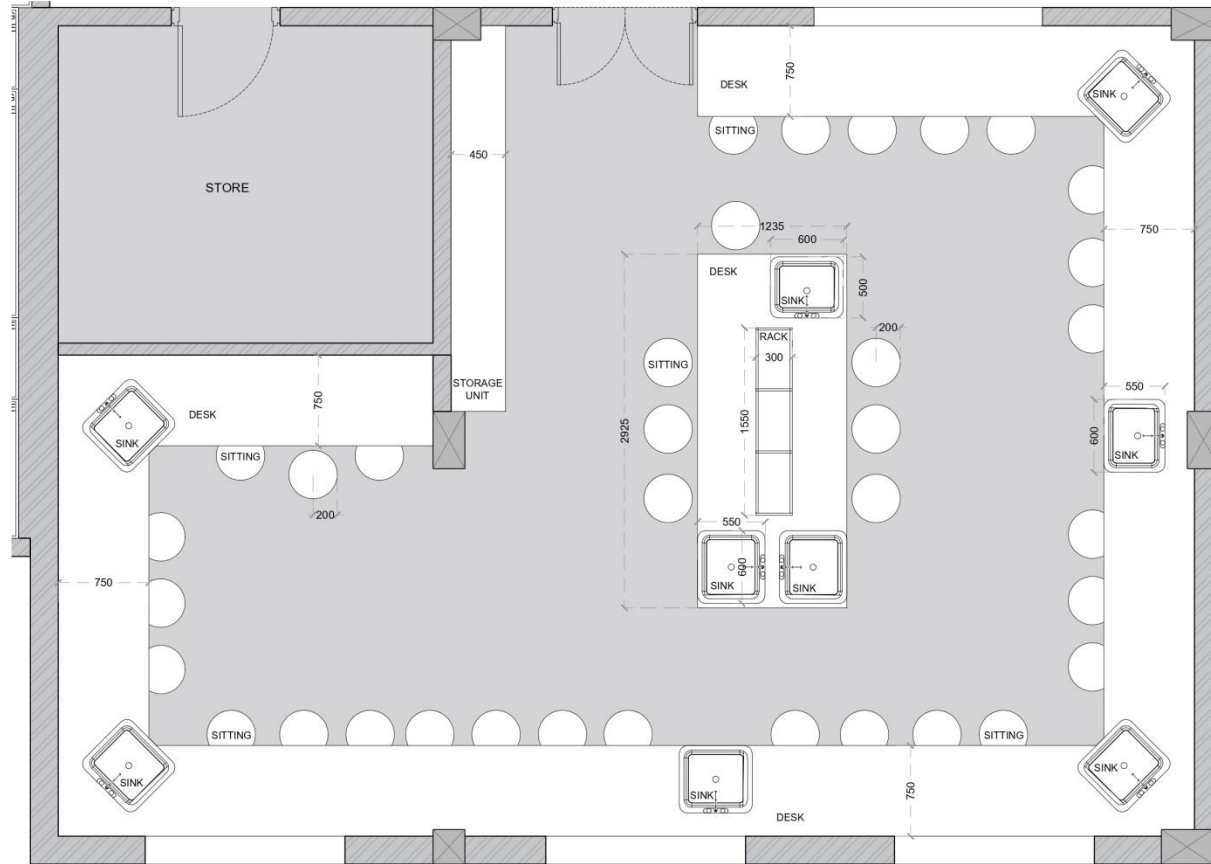


PROS & CONS

- Good storage space.
- Accommodates 30 student
- Comfortable spacing for each student.
- Interactive setup.
- **Circulations space constricted.**
- **One work desk away from teachers desk.**
- **Temporary white board required.**



LABORATORY | LAYOUT_OPTION 3



PROS & CONS

- Lack of storage space.
- Accommodates 28 student
- Comfortable spacing for circulation and each student.
- **Not interactive.**
- **No space for white board.**
- *How much storage do we require ?*
- *Can we use the adjacent store for additional storage and instead accommodate more students in one class?*
- **Kindly note:** a comfortable circulation space between desks is : 0.9-0.75 m
- A compact circulation space is : 0.6m
- Due to limited space and greater requirement these spaces will have to be reviewed on site.
- Apart from this the standard sizes for a lab workstation will have to be optimized along with the vendor/ contractor
- All dimensions are in mm, unless otherwise specified so.

N



THANKYOU

