



Public Meeting

Amite River Basin Commission Master Plan

Introductions & Opening Remarks

ARBC

BOARD OF COMMISSIONERS

JOHN J. CLARK

ARBC President
Iberville Parish Designee

JACK H. HARRIS

ARBC Vice-President
At-Large

LIONEL L. BAILEY, SR.

ARBC Finance Chairman
At-Large; Engineer

HON. RYAN BYRD

St. Helena Parish Designee

HON. CLINT COINTMENT

Ascension Parish Designee

HON. RANDY DELATTE

Livingston Parish Designee

EDWIN 'ED' PARKER

E. Feliciana Parish Designee

FRED RAIFORD

E. Baton Rouge Parish Designee

MARK HARRELL

At-Large

BRIN FERLITO, PE, PTOE

At-Large; Engineer

VACANT

At-Large; Engineer

GARY M. O'NEAL, JR., CFM

At-Large; Certified Floodplain Manager

HON. PETE DUFRESNE

St. James Parish Designee

BRIAN LEZINA

CPRA Designee

MONICA SALINS GORMAN

PLD Designee

EDWARD KNIGHT, PE

DOTD Designee

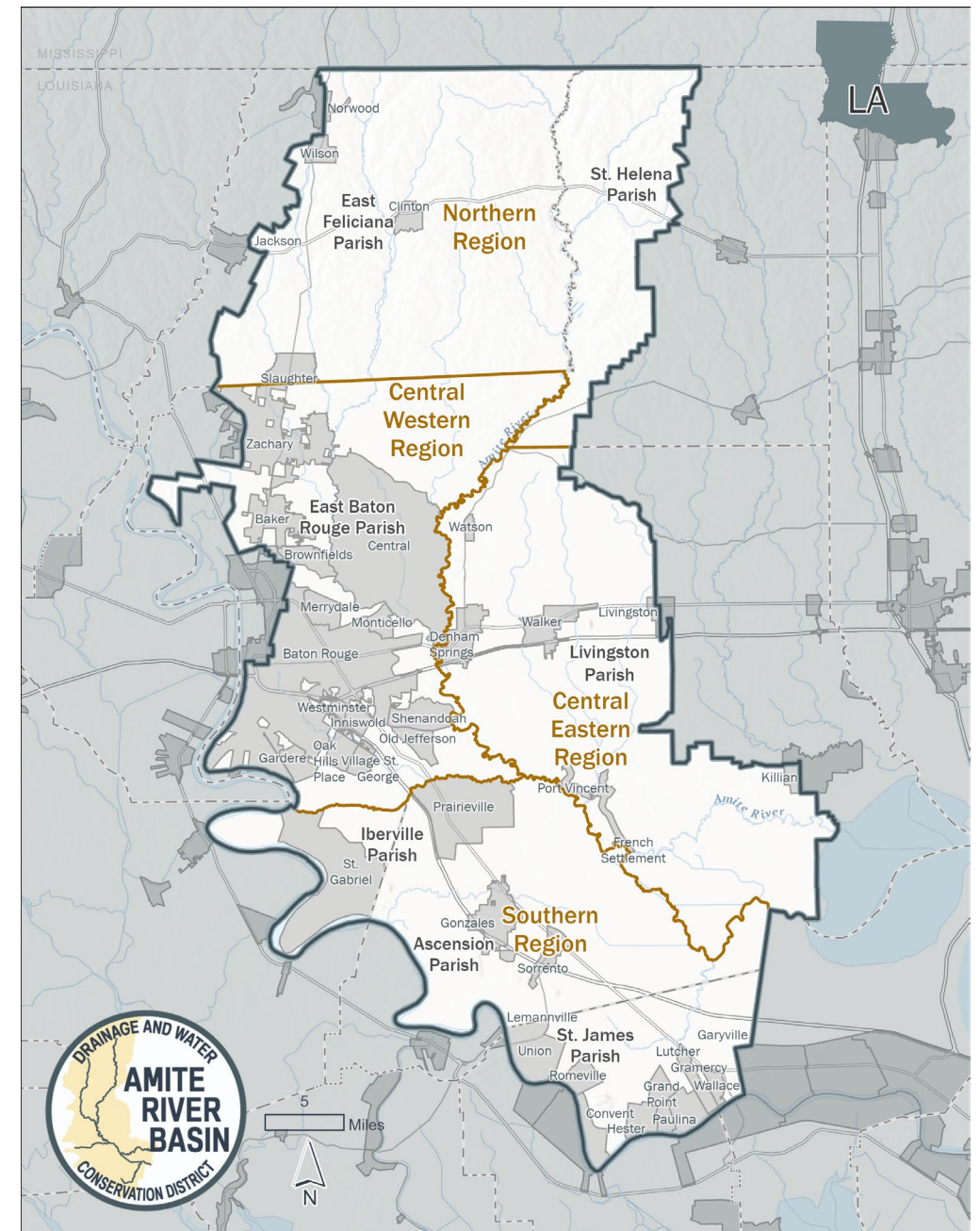
Agenda

- Amite River Basin Overview
- Mission of the Amite River Basin Commission
- What is a “Master Plan?”
 - How will the Master Plan align with this mission?
- Amite River Basin Master Plan Process
- Data Collection
- Codes and Ordinances
- Understanding Existing Conditions
 - Modeling
 - Mitigation Actions
- Project Funding
- Schedule
- Masterplan Benefits
- Key Take Aways
- Next Steps in the Planning Process

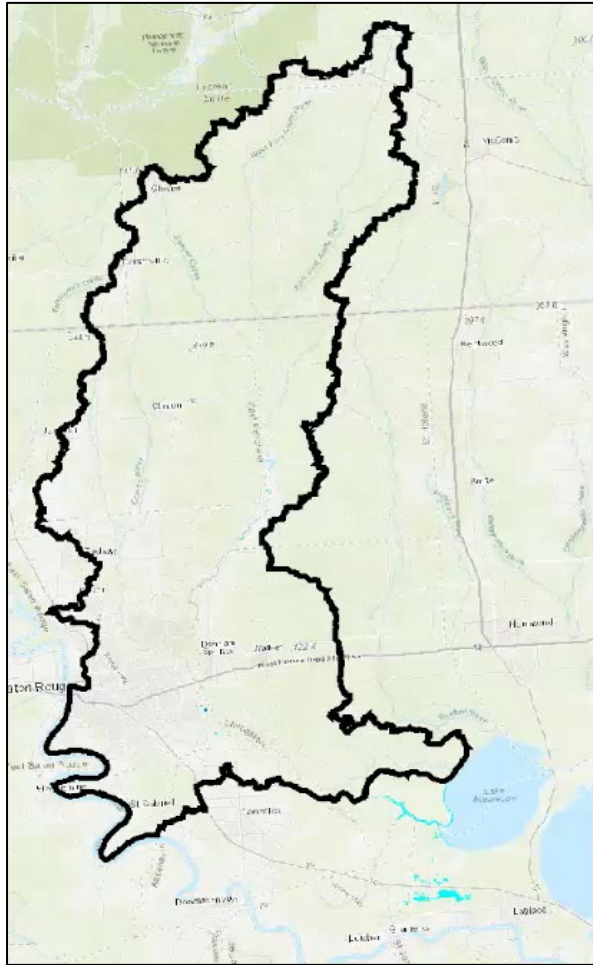
Amite River Basin Overview

Amite River Basin Overview

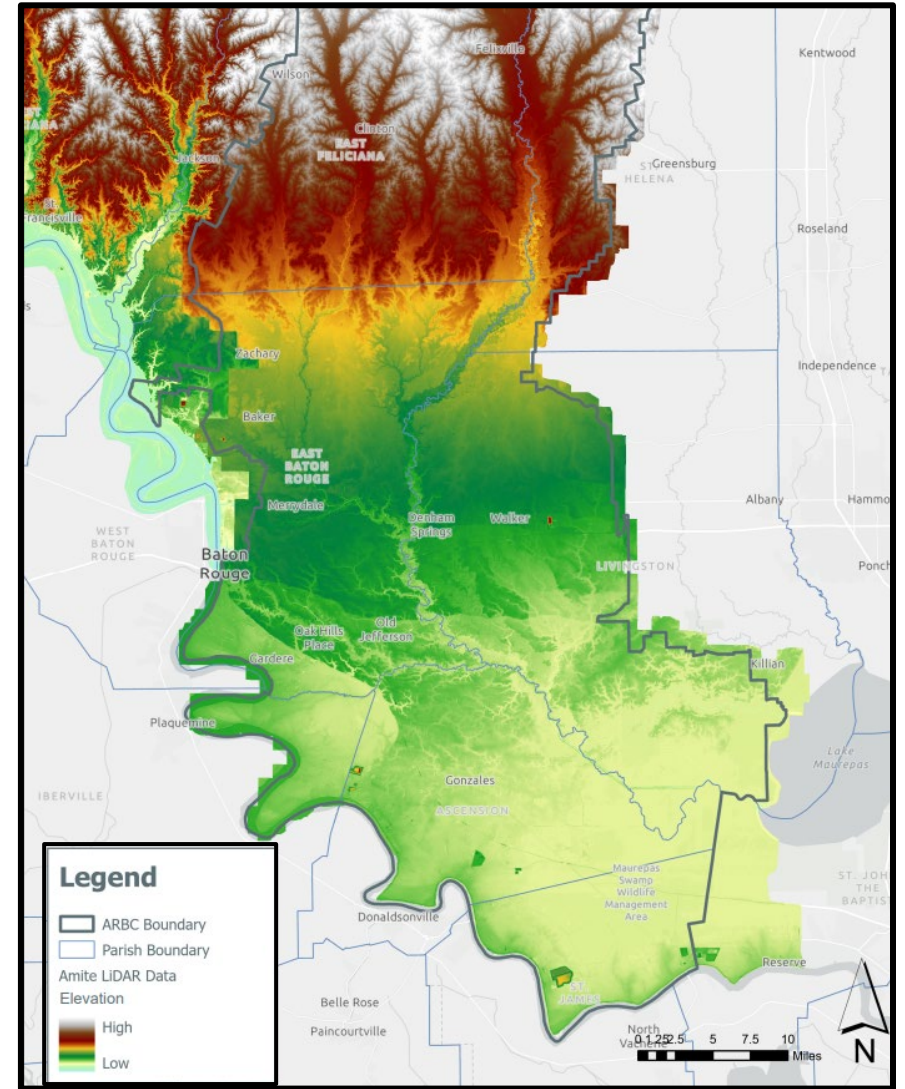
- 2,200 square miles
- Impacts 7 parishes
- Population of approximately 700,000
(15% of the state's population)
- Major streams/ivers
 - Amite River
 - Comite River
 - Bayou Manchac
 - Colyell Creek
 - New River



Amite River Basin Overview



August 2016 Flood Inundation



ARBC Topography

Amite River Basin



Amite River Basin



Mission

Mission of the Amite River Basin Commission

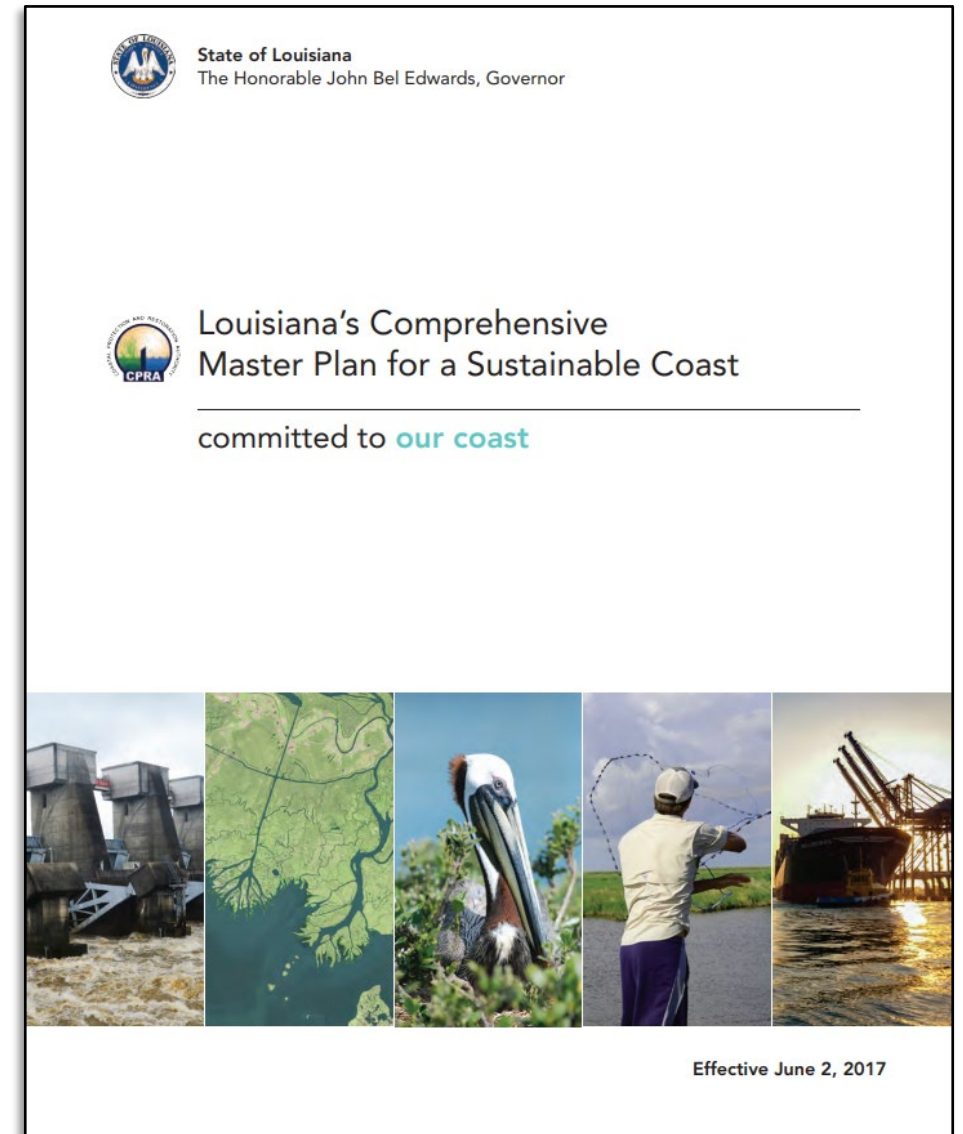
- Mitigate flood damage
- Coordinate regional river management
- Promote responsible watershed management
- Conserve and restore the unique natural resources in the Amite River Basin watershed



What is a “Master Plan?”

What is a “Master Plan?”

- Long term strategy
- Guideline for Future Development
- Implementation Governance
- Five-year update cycle
- Align with Commission Goals
- Legislative Mandate



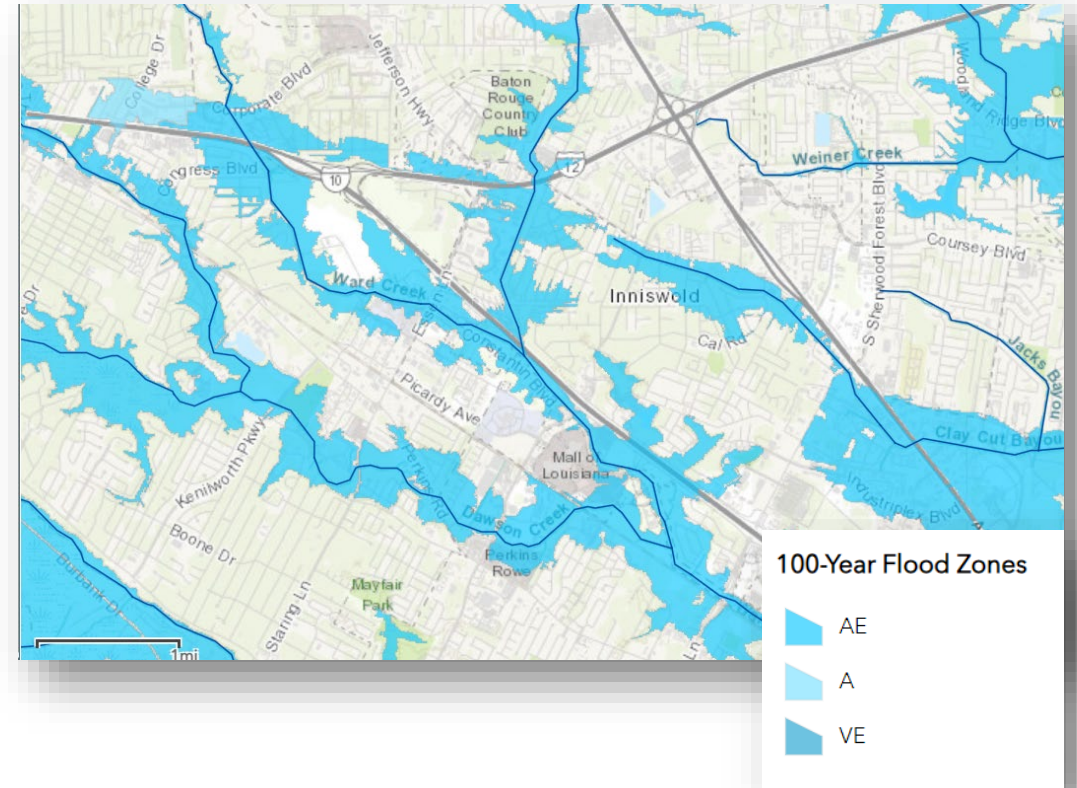
Example Master Plan

<https://coastal.la.gov/our-plan/2023-coastal-master-plan/>

How will the Amite River Basin Master Plan align with this mission?

How will the Amite River Basin Master Plan align with this mission?

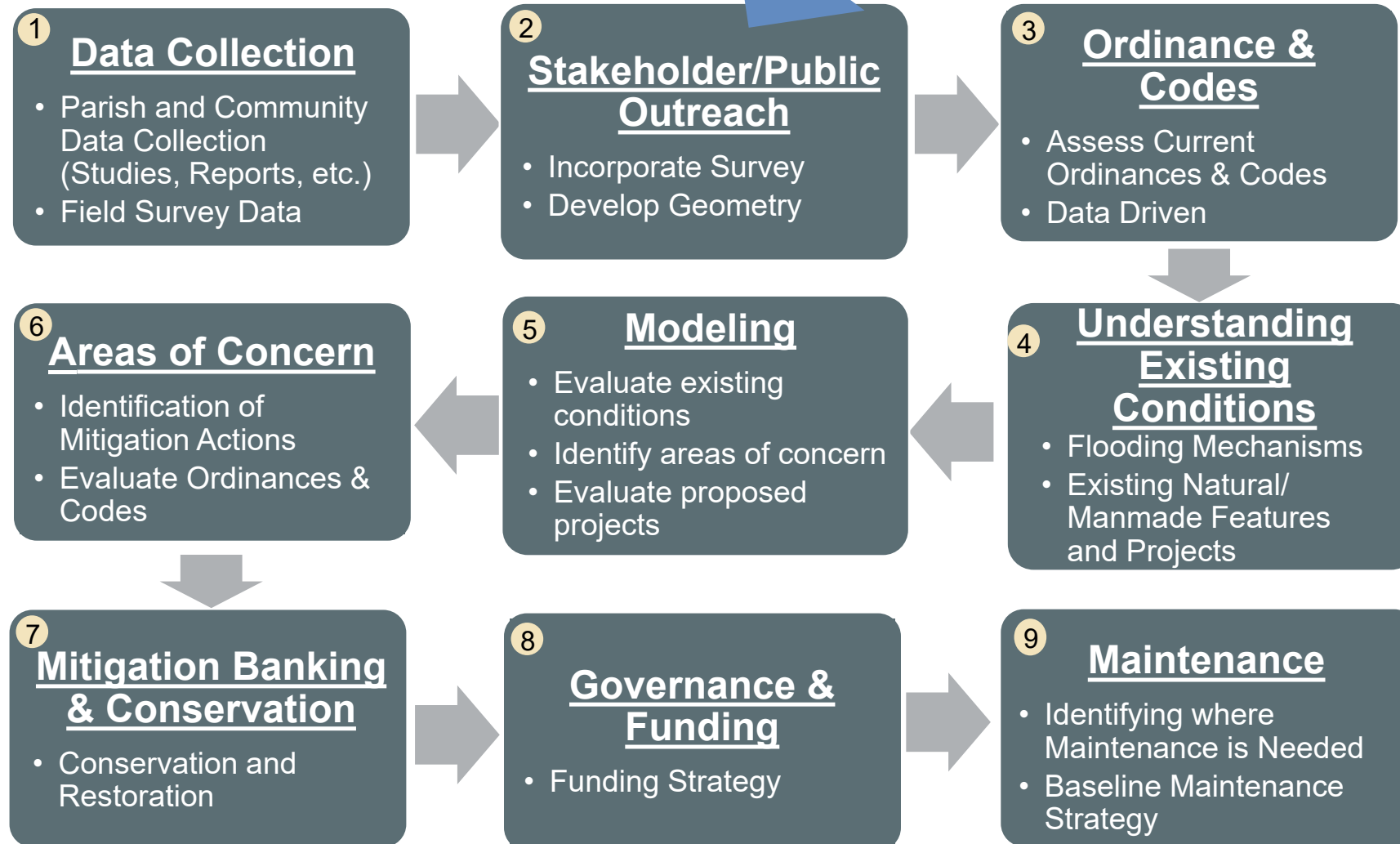
- Identify flood risks and areas of concern
- Recommend projects and ordinances
 - Reduce Flood Risk
 - Restore/ Preserve Natural Resources
- Establish Conservation Areas
- Governance/Funding Plan
- Maintenance



Area of Identified Flood Risk

Master Plan Process

Master Plan Process



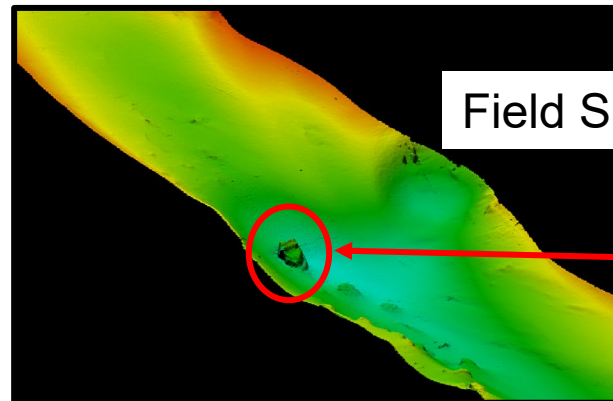
Data Collection

Data Collection

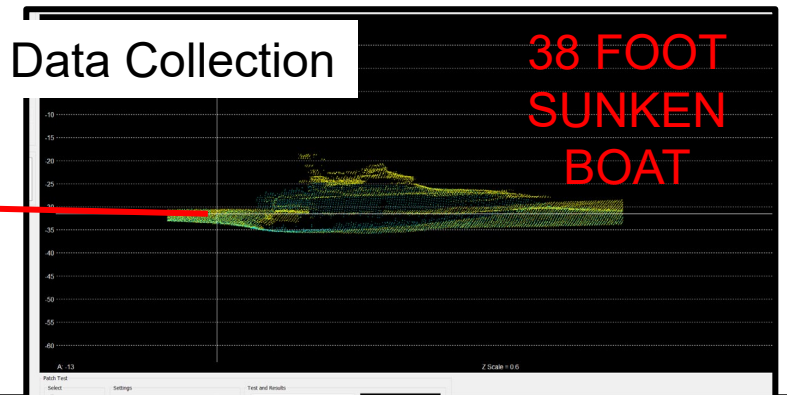
- Existing Data Collection
 - Studies
 - Reports
 - Models
 - Project Plans
- Sediment Sampling
- River Cross-Sections



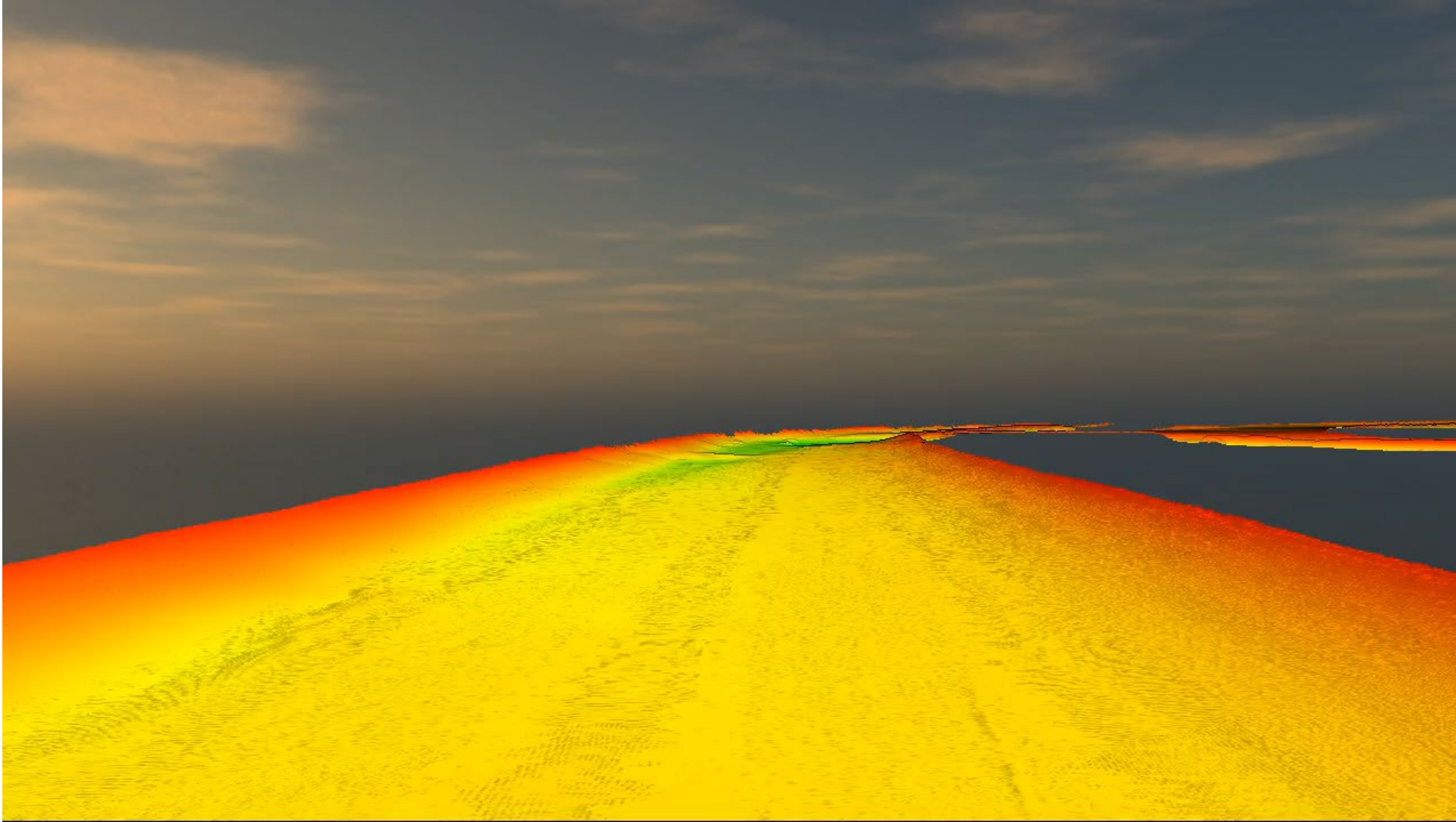
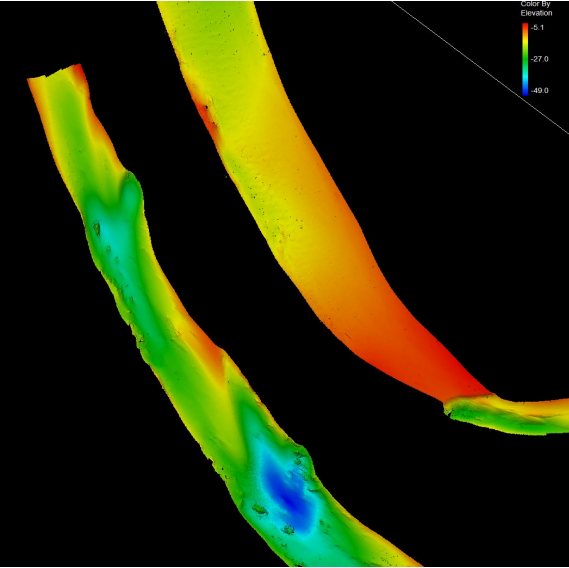
Sediment Sampling



Field Survey Data Collection



Preliminary Multibeam Survey Example



Codes and Ordinances

Codes and Ordinances

Process

Assessment of current ordinances throughout the Basin.

Provide consistent development and stormwater ordinance recommendations for communities in the Basin.

Utilize technical data in support ordinance recommendations.

Deliver data for communities rating system improvements.

ARBC Master Plan – FEMA Community Rating System

What is the Community Rating System (CRS)?

Voluntary incentive program that recognizes and encourages community floodplain management practices that exceed the minimum FEMA requirements

What are the benefits of CRS?

Discounted flood insurance premium rates for policy holders

What is the ARBC Masterplan doing to help CRS?

Reviewing each community's CRS status and will make recommendations on how to potentially improve

Many masterplan products may be used to maintain and gain additional CRS credit, potentially improving the communities rating.

Improved rating provides larger insurance discount

How much discount does CRS get me on my flood insurance policy?

CRS* Class	Flood Insurance Premium Reduction	ARBC Community Ratings*
5	25%	
6	20%	East Baton Rouge Parish,
7	15%	Ascension Parish, Central, Denham Springs, Walker
8	10%	St. James Parish, Zachary, Gonzales, Lutcher
9	5%	Baker, Sorrento
10	0%	Livingston Parish, Port Vincent, French Settlement

* As of June 2024

Learn more about the CRS program:
<https://www.fema.gov/floodplain-management/community-rating-system>

Understanding Existing Conditions

Flooding Mechanisms

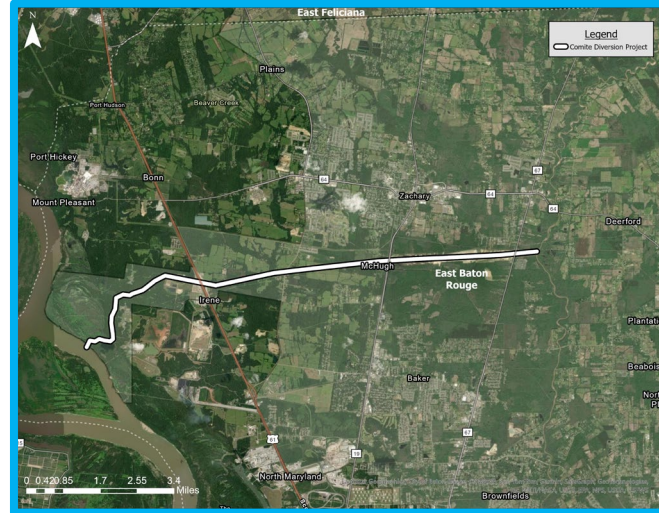
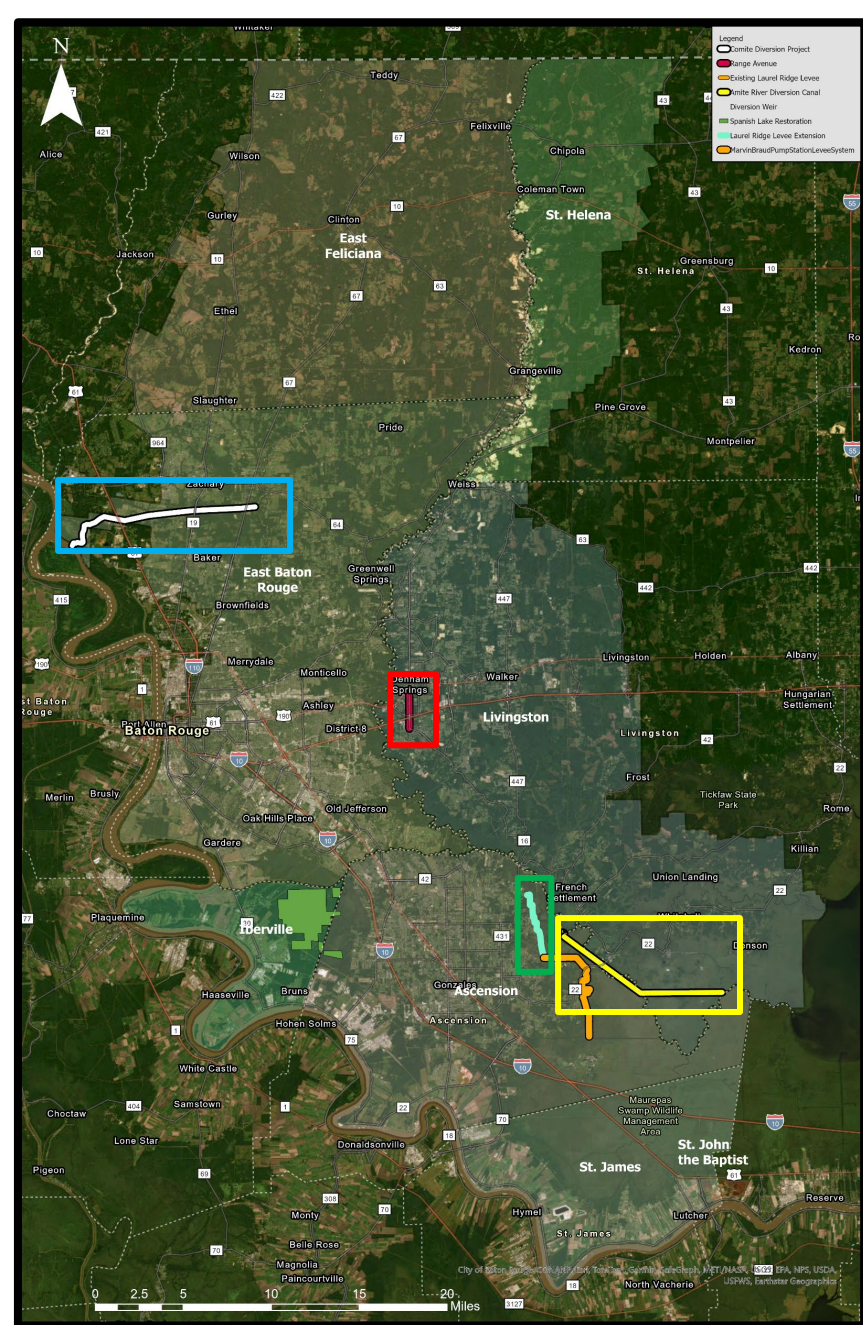


Backwater

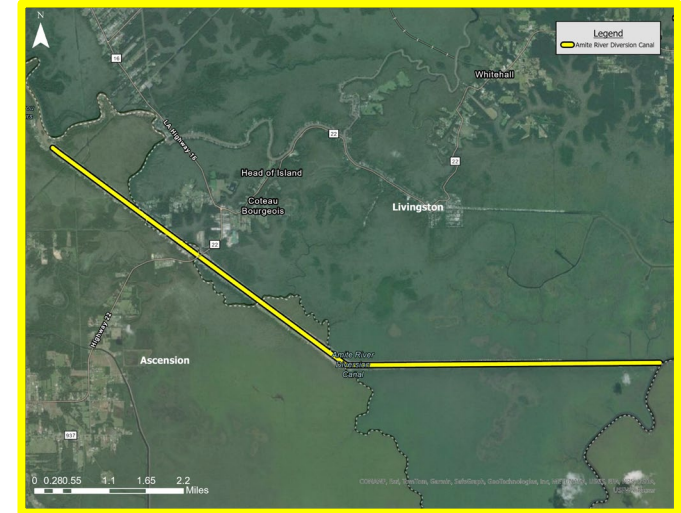


Rainfall

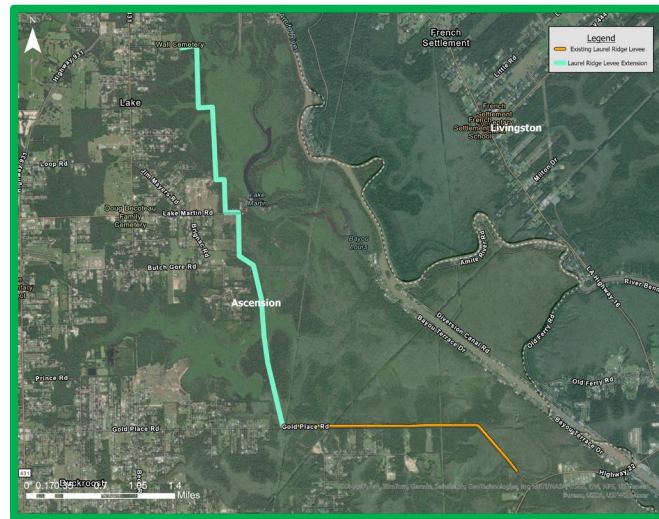
Existing Natural and Manmade Features



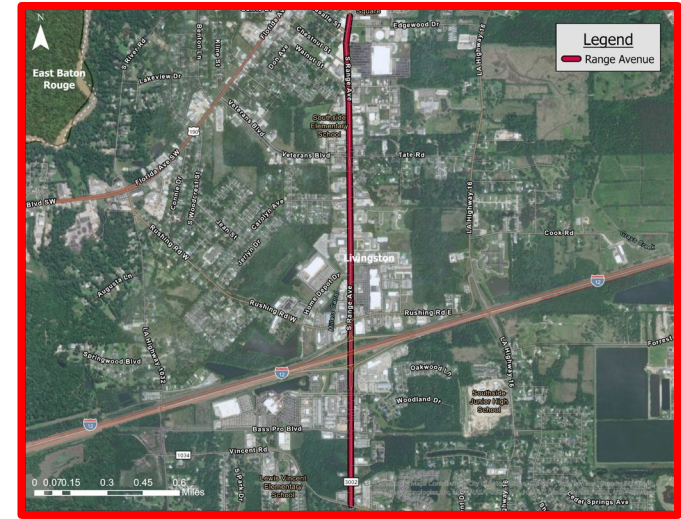
Comite River Diversion



Amite River Diversion Canal



Laurel Ridge Levee Extension

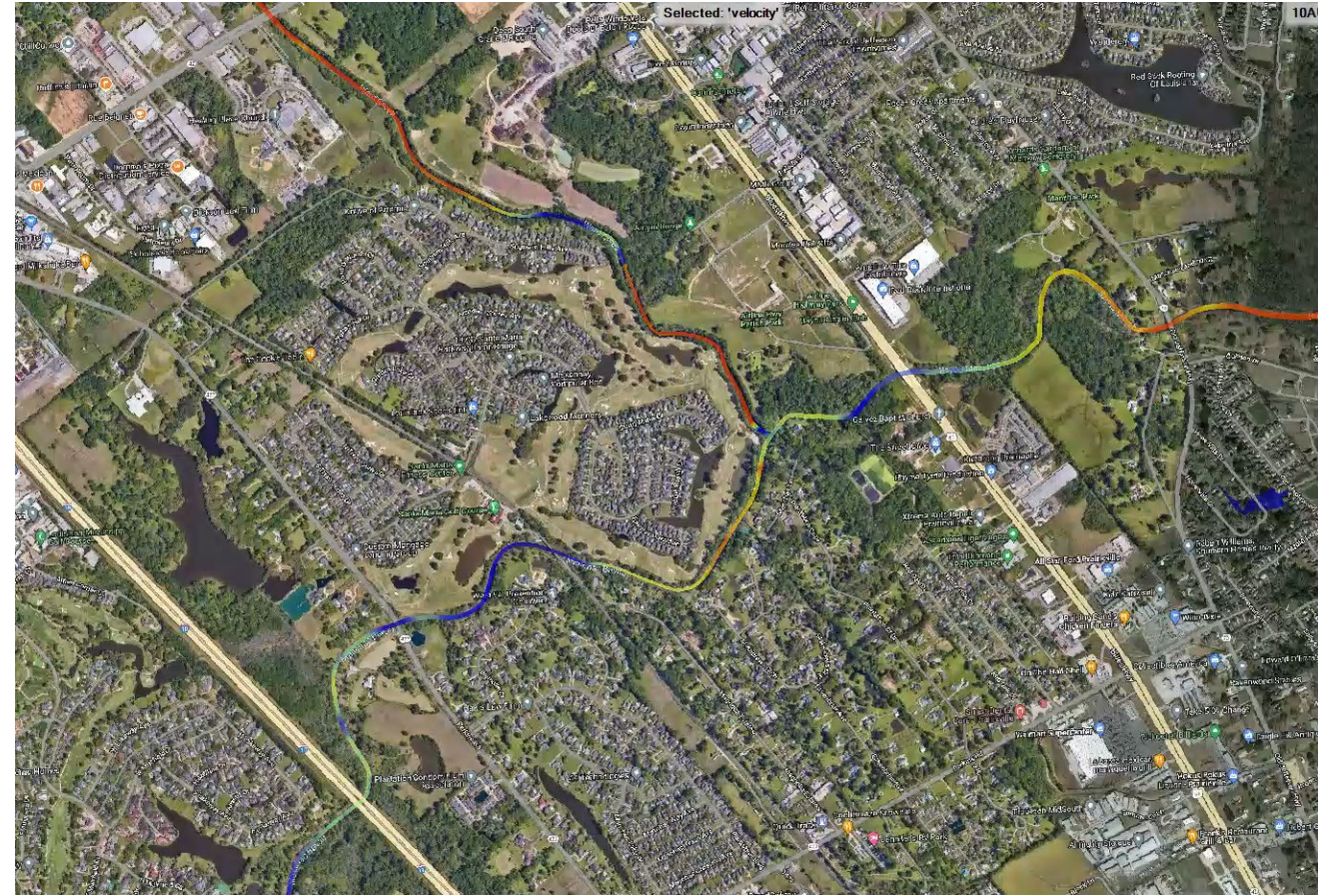


Range Avenue

Modeling

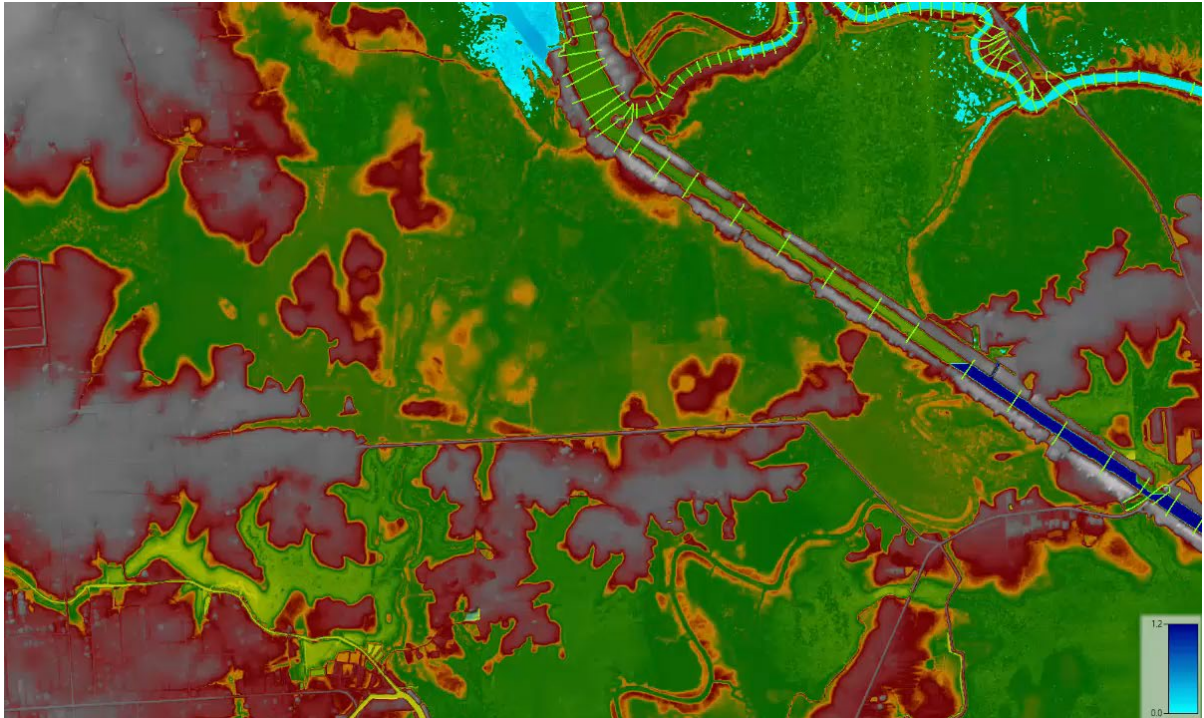
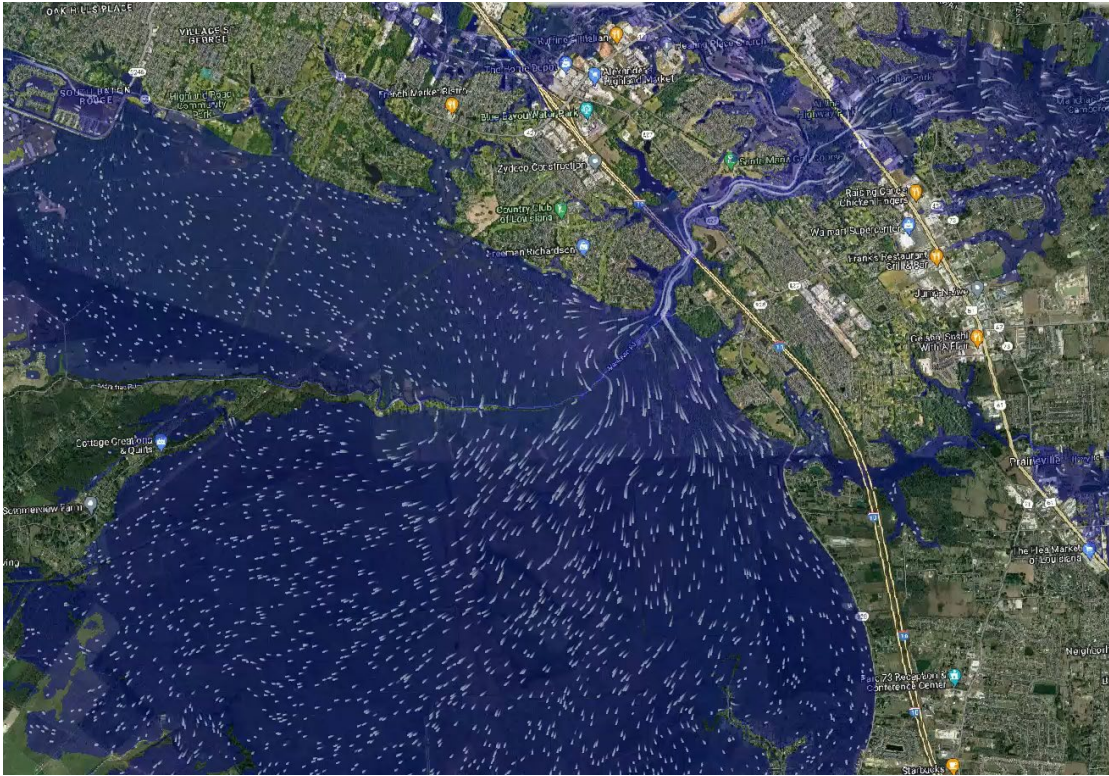
Modeling

- Computer Program
 - Soils, Topography, and Other Factors
 - Determine Flood Depths And Extents
- Evaluate Proposed Projects
- Damage Calculations
 - Existing Conditions
 - Proposed Project Conditions
- Compare Results for Project Selection
- Ensure not pushing water to your neighbor



Model Simulating Flow Velocities

Modeling



Identification of Mitigation Actions

Ongoing/Proposed Projects

Project Name	Status
Laurel Ridge Levee Extension	Construction underway
Comite River Diversion Canal	Construction underway
Westshore Lake Pontchartrain Levee	Construction underway
Marvin Braud Pump Station/Levee System	In Design
Ascension Storm Surge Project	In Design
LA Hwy 22 Gapping	In Design
CPRA Freshwater Diversion	In Design
Bayou Manchac Restoration, Ward Creek realignment	Planning Phase
Amite River Sediment Removal	Planning Phase
New River Pump Station	Planning Phase
Westshore Interconnector Levee	Planning Phase
Comite River Clearing and Snagging	Planning Phase
Upper Amite Flood Risk Reduction and Restoration	Conceptual Project
Darlington Reservoir/Upper Amite Detention	Conceptual Project
Manchac Floodplain Preservation	Conceptual Project



Construction Underway for Comite River Diversion



Construction Underway for Westshore Lake

Mitigation Strategies Identification

- Structural
 - Channel restoration
 - Detention
 - Levee Systems
 - Pump Stations
- Non-Structural
 - Floodplain Preservation
 - Flood Insurance
 - Codes and Ordinances
 - Floodplain Management

Here's how you can help

- Visit the stations
- Voice concerns
- Give your input

Project Funding

Project Funding

- Potential Funding Strategies:
 - Funding strategy will align with the commission's governance, laws, and decision-making authorities
 - Develop a fair taxation structure to ensure equitable funding across the ARBC region
 - Leverage technical assistance from DOTD, CPRA, and Pontchartrain Levee District
 - Utilize grant opportunities for projects funding



Maintenance

Maintenance of the Basin

- Maintenance Strategy:
 - Identify needs and timing
 - Establish funding requirements
 - Identify responsible party
- Types of Maintenance
 - Identify clogged waterways
 - Sediment management
 - Diversion Weir
 - Comite River Diversion Canal
 - Erosion and channel stability



Debris in Ward Creek



Debris Removal

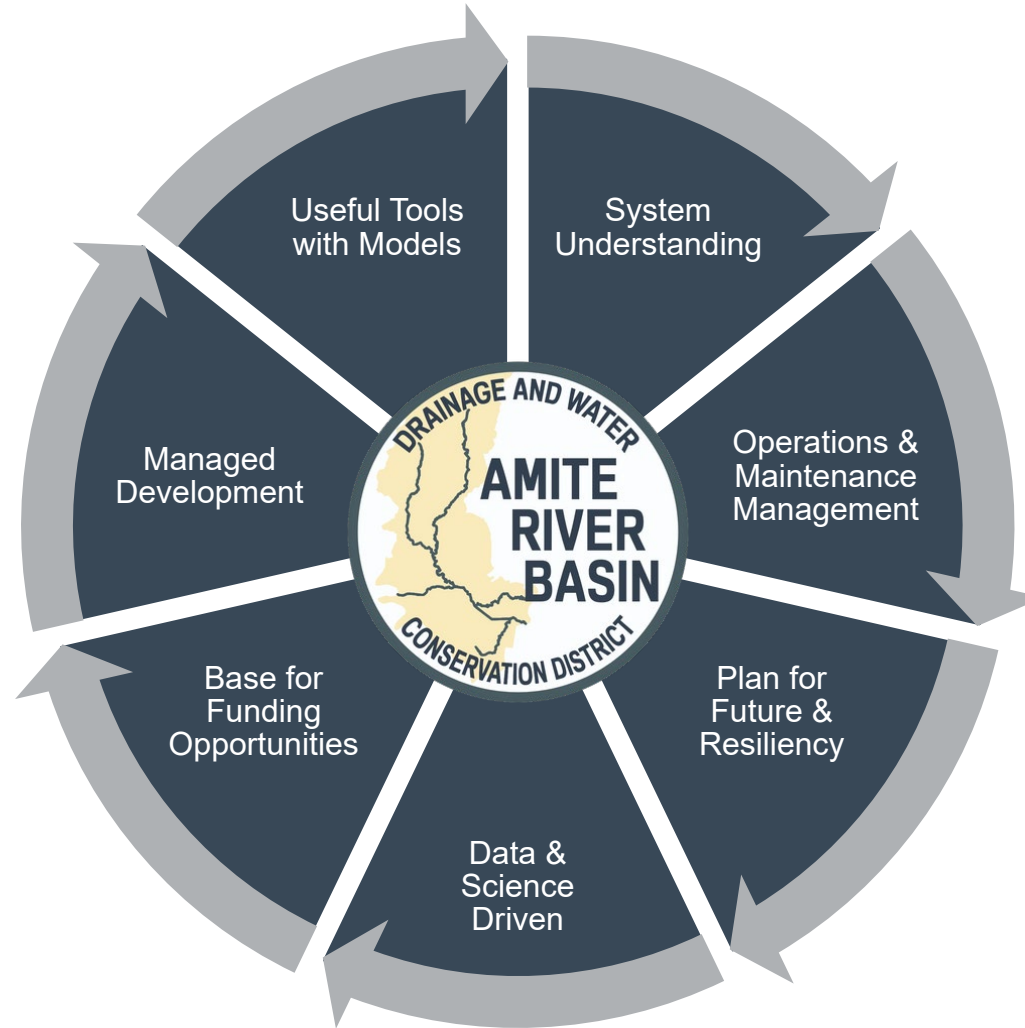
Schedule

Master Plan Schedule



Master Plan Benefits/Takeaways

What are the benefits of a Master Plan?



Key Takeaways

Key Takeaways

- Regional focused projects and policies
- Reduce flood risk
- Do no harm approach to reduce flood risk
- Align with ARBC Goals
- Community coming together
 - Safer
 - More Resilient
- Strategies to benefit most vulnerable.
- Conserve natural resources

Q & A

Open House Stations

(Tip: you don't have to go in order)

Station #1: What is the ARBC Master Plan?

- Learn more about the process.
- Talk directly with those creating the plan.

Station #2: Flood Types

- Not all areas in the Amite River Basin flood the same.
- Learn how it takes different types of projects to reduce different types of floods.

Station #3: Problem Area Identification & Projects

- Large maps on display for you to mark your area of concern.
- Online mapping site with assistance for you to tell us where you'd like to see flooding reduced ([Amite River Basin Commission Masterplan \(dimensionalview.com\)](http://dimensionalview.com))