



St. James Parish Government

West Shore Connector Levee

Project Status Update
St. James Parish Council Meeting
Convent, LA

August 6th, 2025

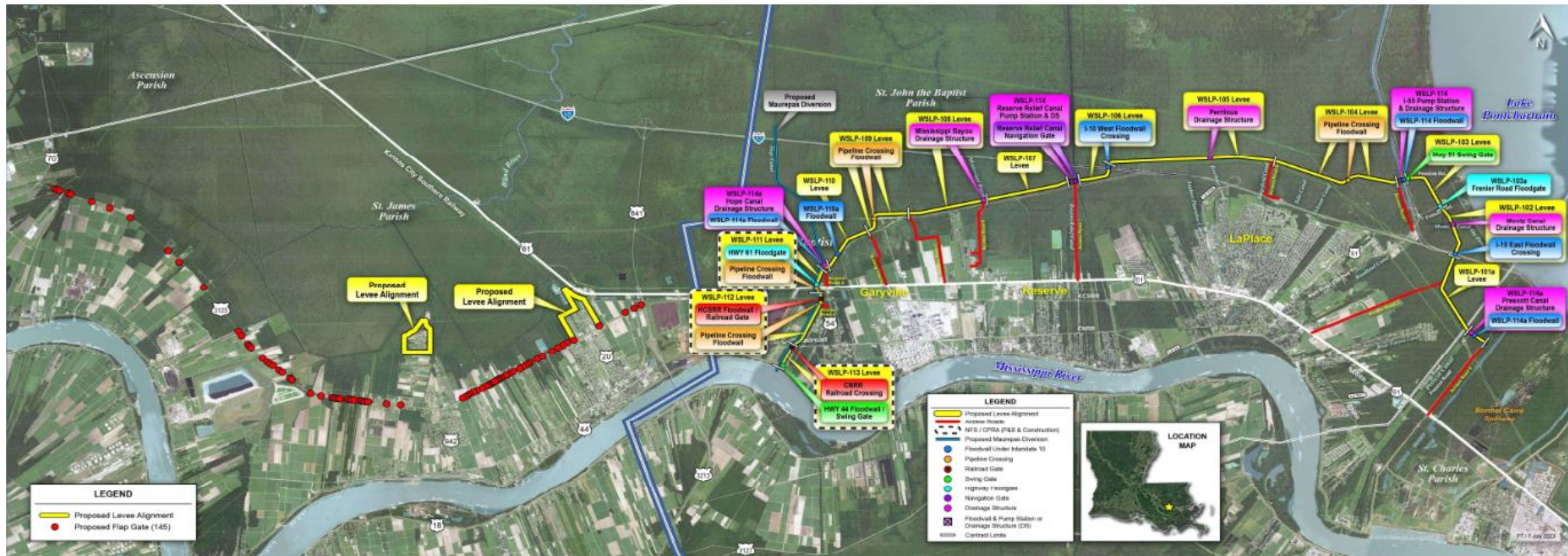
Presentation Overview

- West Shore Lake Pontchartrain (WSLP) – St. James Background
- West Shore Connector Levee (WSCL) – Initial Funding and Feasibility
- Integrating WSCL into WSLP
- Project Funding and Phasing
- WSCL Status Update
- M-2 East Pump Station and Drainage Structure Status Update
- Upcoming Schedule Items

WSLP – St. James Background

WSLP (Overall)

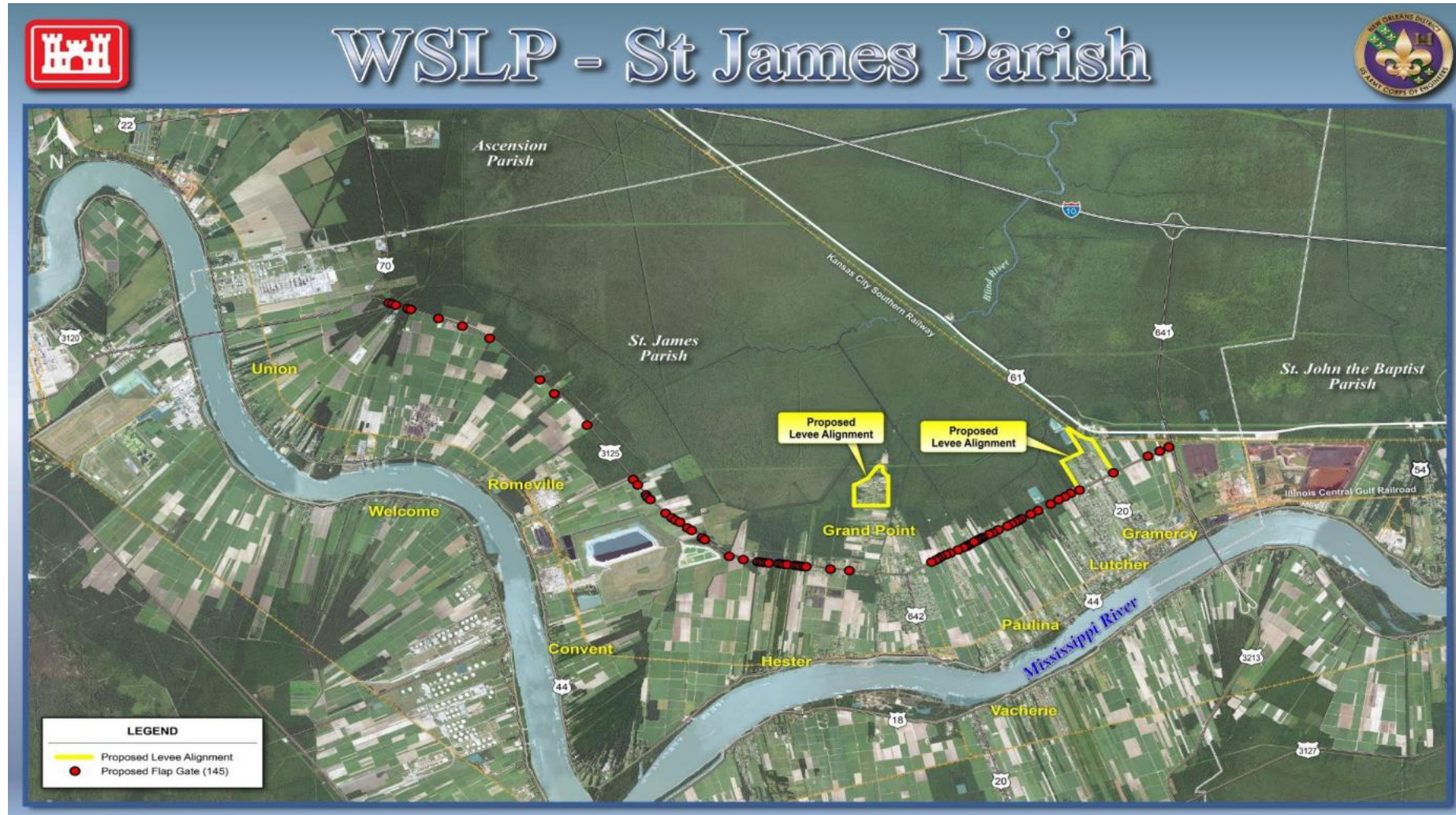
- WSLP authorized as part of the Bipartisan Budget Act of 2018 (BBA18)
- \$760M appropriation for design, wetland mitigation, and construction.



WSLP – St. James Background

WSLP – St. James

- ~\$45M included for features in original authorization
- Following Hurricane Ida an additional \$450M was appropriated to WSLP (2022)
- Required Resiliency Study provides an opportunity to look at additional alternatives in St. James



WSLP in St. James Parish (USACE WSLP Public Meeting Presentation, October 2020)

WSLP – St. James Background

Need for WSLP – St. James

The East Bank of St. James Parish floods from both riverine and storm surge events, highlighted by flooding experienced during Hurricane Isaac in 2012, the 2016 Flood, and Hurricane Ida in 2021.



2016 Grand Point Area (St. James Parish)

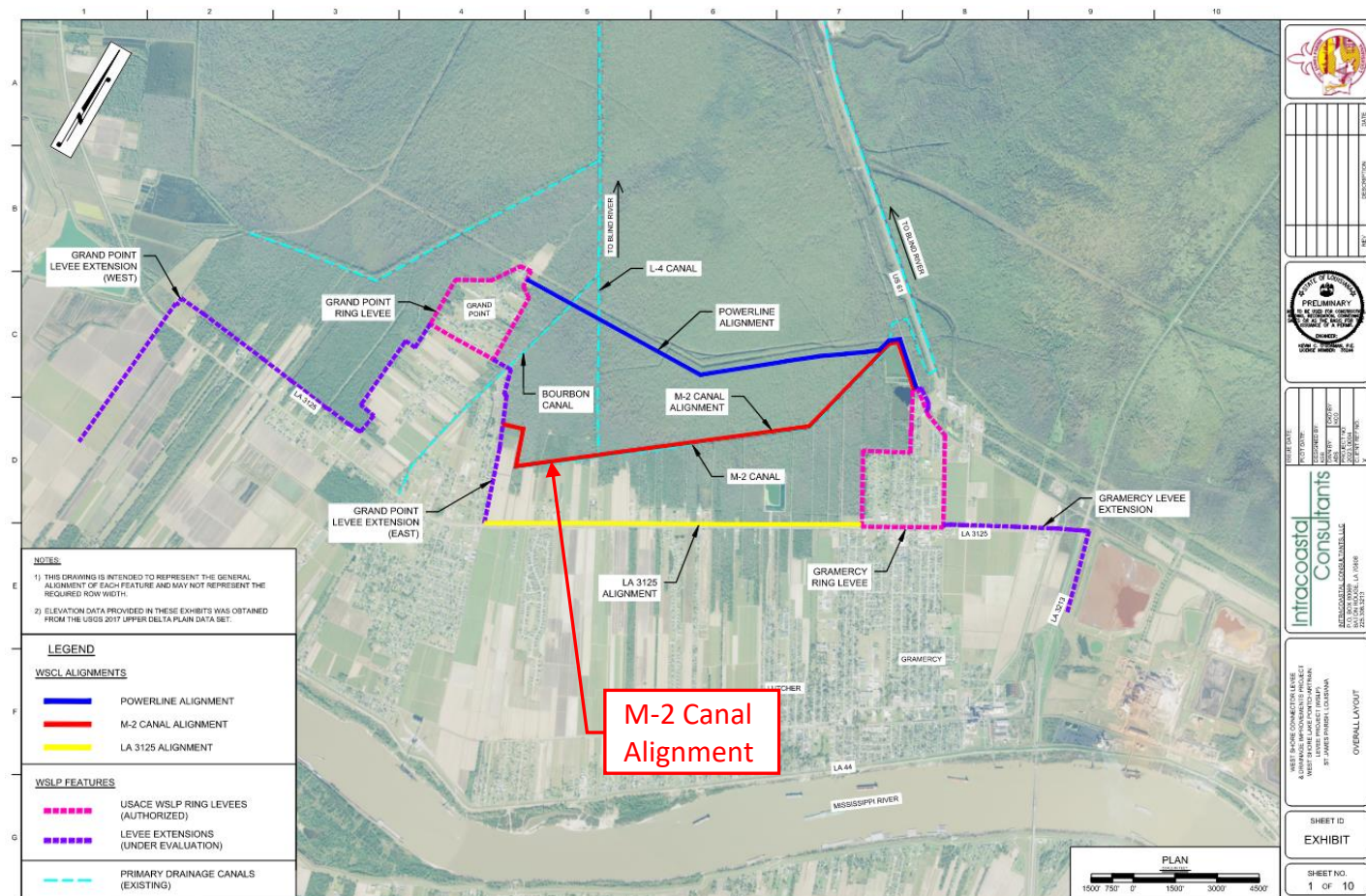


Flood Risk Reduction Project Areas in the Lower Amite Basin (St. James Parish)

WSCL – Initial Funding and Feasibility

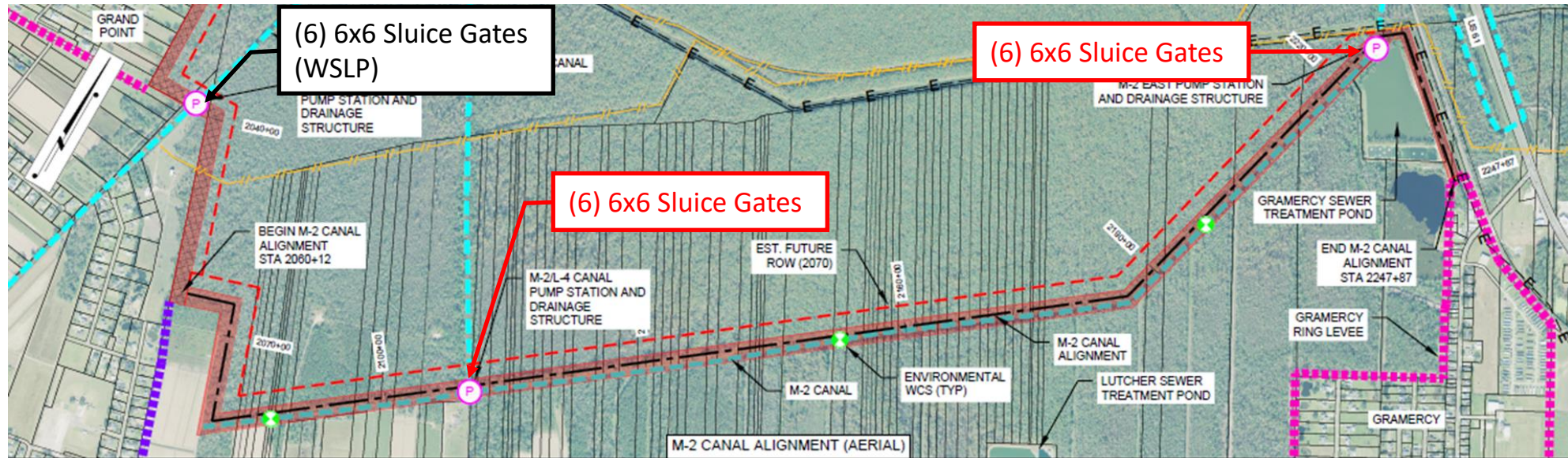
St. James Parish seeks long-term sustainable flood risk reduction alternative to features in WSLP – St. James

- **2021** – Parish set out to identify funding to connect the two authorized levee features (West Shore Connector Levee) for WSLP – St. James
- **2022** – Regular Session of LA Legislature HB2 – ACT 117 includes \$13.8M (state), \$18.6M (total funding) for WSCL
- **2023** – Parish initiates Alternatives Analysis and Hydrologic & Hydraulic (H&H) Analysis for WSCL
- **2023** – H&H and Alternatives Analysis completed results presented to NFS

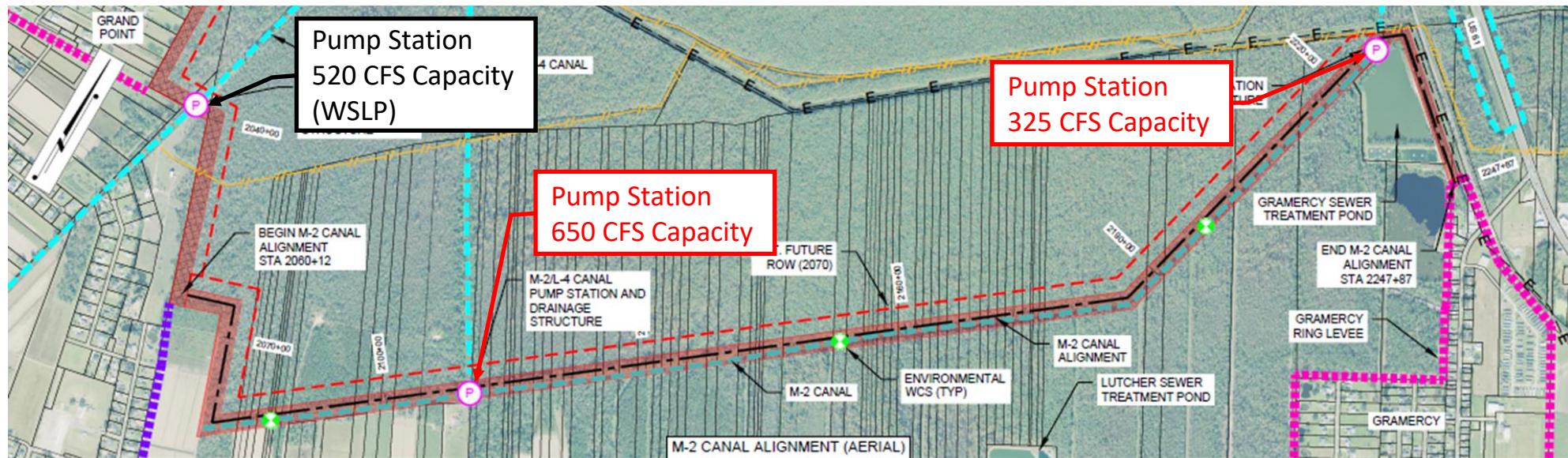


WSCL – Initial Funding and Feasibility

**Non-Surge Event
(Drainage Structures)**



**Surge Event
(Pump Stations)**



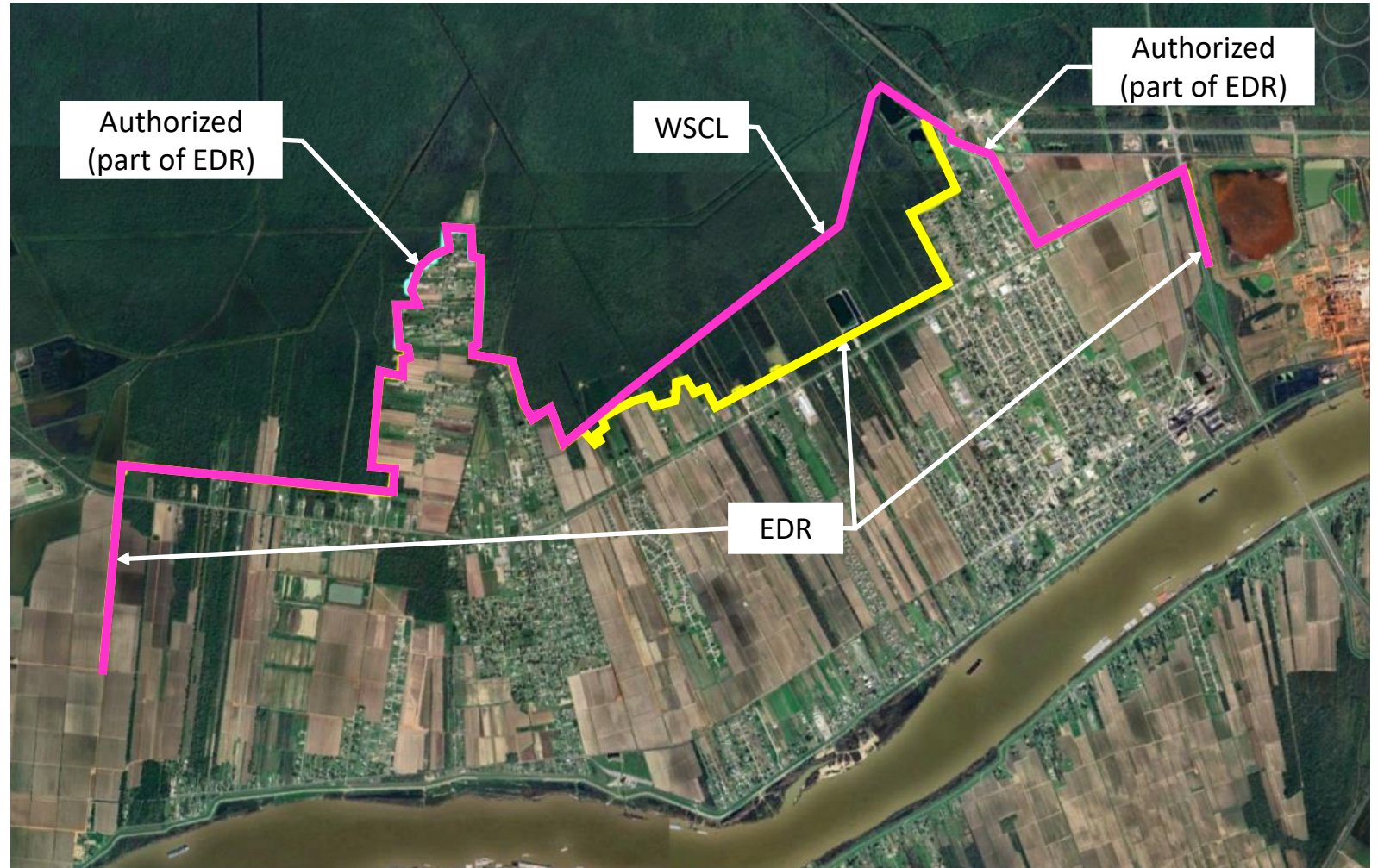
Integrating WSCL into WSLP

2023

- USACE provides EDR alignment

2024

- **January** – SJP presents results of H&H and Alternatives Analysis to USACE
- **September** – SJP submits permit application for WSCL
- **December** – SJP/NFS and USACE meet on path forward for integrating WSCL into WSLP

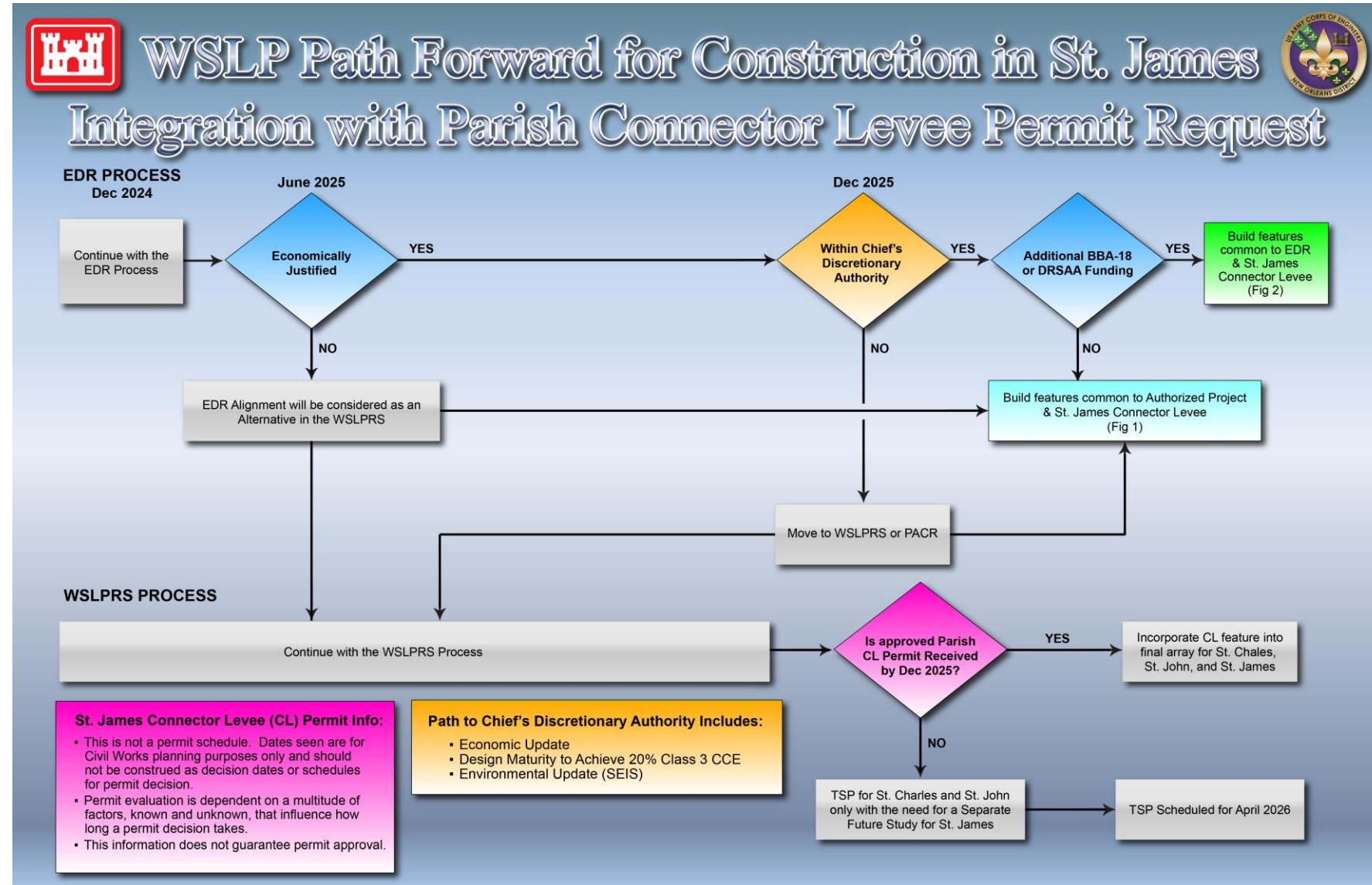


USACE EDR Alignment (yellow & cyan) and WSCL Alignment (magenta)

Integrating WSCL into WSLP

December 2024 Stakeholder Meeting

- WSCL Permit by Dec 2025 for inclusion in TSP of WSLP Resiliency Study
- USACE to proceed with design and construction of authorized features
- If EDR is economically justifiable, USACE will continue with design and construction of features common to WSCL and EDR



Integrating WSCL into WSLP



Fig 1 - Features common to Authorized Project & St. James Connector Levee

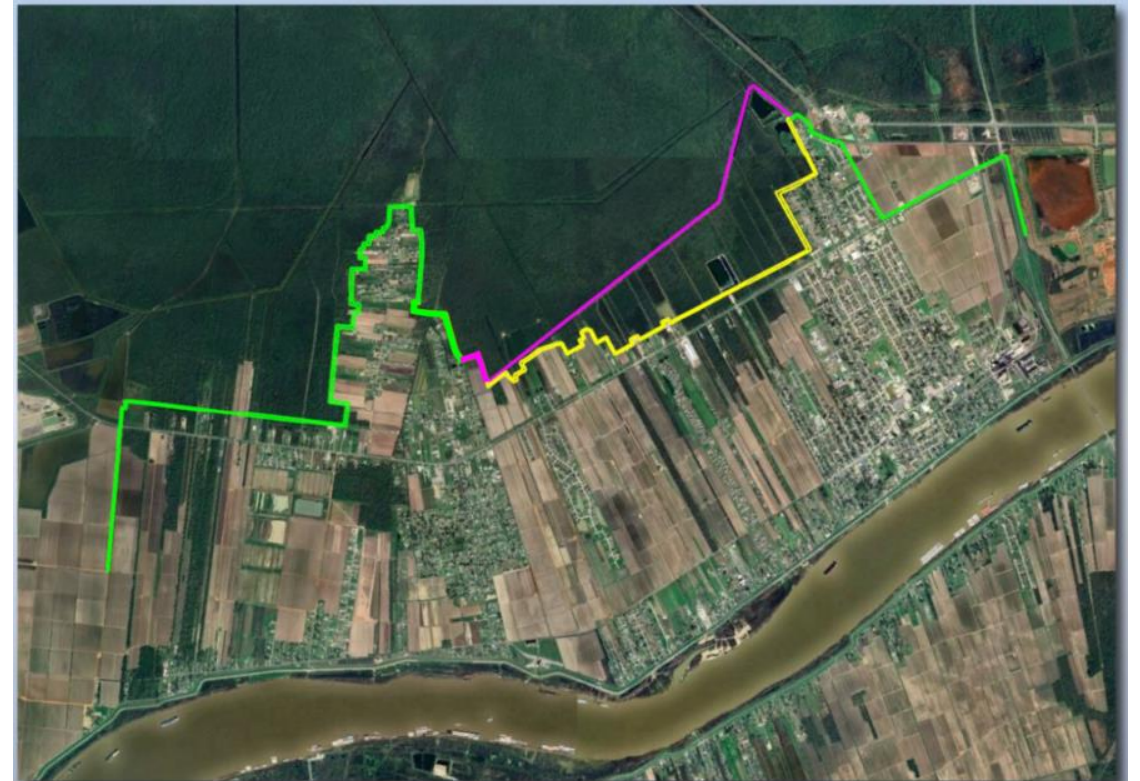


Fig 2 - Features common to EDR & St. James Connector Levee

Integrating WSCL into WSLP



West Shore Connector (St. James Parish)

- Levee
- Pump Stations and Drainage Structures

WSLP Authorized Features (USACE)

- Levee
- Pump Stations
- Drainage Structures

WSLP Under Evaluation (USACE)

- Levee
- Pump Stations
- Drainage Structures

2021

2022

2023

2024

2025

2026

2027

2029+



\$13.6M Funding

WSCL Capital
Outlay Award

+\$6.7M Funding

Capital Outlay
Award Increase

\$4.8M Funding

SJP Commits Local
GOMESA RevenueH&H and Alternatives
Analysis Completed

WSCL Design

WSCL Construction Phase 1
Levee & Access (\$23M)HSDRRS/WSLP
Geotech Investigation

M-2 East PS Design

WSCL Construction Phase 2
M-2 East Pump Station
(\$15M funded)CPRA Master Plan
includes funding
for St. James

\$6M Funding

CPRA-St. James IGA

\$10M Funding

CPRA-PLD Funds used to
secure grant funding for
M-2 East Pump Station

\$2M Funding

PLD-St. James IGA

ARBC/LWI Region 9
Grant ApplicationWSCL Permit
Application

Receive WSCL Permit

Funds Spent on WSCL Eligible
for NFS Cost ShareBuild Remaining
Features of TSP
(with funding availability)US Army Corps
of Engineers®

2022 DRSA

WSLP Resiliency Study

Tentatively Selected
Plan with WSCLChief's Report with
WSCL in WSLPWSLP
St. JamesEDR Alignment
for St. James

Economically Justified?

Yes

Build Features Common
to EDR & WSCLUSACE Design of Reaches
WSLP-201 Gramercy
WSLP-202 Grand PointConstruction
WSLP-201 Gramercy
WSLP-202 Grand PointCOMPREHENSIVE FLOOD RISK REDUCTION
FOR ST. JAMES – EAST BANK

Project Phasing and Funding

Phase Description

Est. Cost

• **Phase 1 – Levee Embankment & Access**

\$26M

- ~\$19M in state funding through Capital Outlay
 - ~\$6M Local Match – St. James GOMESA funding
- \$1M from CPRA for Phase 2 Geotech Investigation and Permitting
- Includes interim measures at EWCS and L-4 Canal Crossing

• **Phase 2 – M-2 East Pump Station & Drainage Structure**

\$26.7M

- \$10M ARBC/LWI Region 9 Grant
- \$5M CPRA
- \$1.7M PLD
- ~\$10M of additional funding needed
 - To be requested from CPRA in FY26-27 Annual Plan

WSCL Status Update (Phase 1)

Data Collection

- Topographic Surveys & ROW Mapping
- Wetland Delineation
- Geotechnical Investigation (Phase 1 & 2)
- Other Environmental Surveys for permit

Permitting

- September 2024 – Application Submitted to LDENR
- June 2025 – Received Mitigation Intent Letter from LDENR, awaiting USACE prior to permit issuance

Land Acquisition

- ROW Mapping, Title Reports, and Property Surveys ongoing
- Completed Title Reports on approximately 50% of the parcels

Design

- Addressing comments from USACE and CPRA on 30% Submittal
- Incorporating Phase 2 Geotechnical Data

Estimated Schedule

2024-Nov – 15% Design Submittal (*complete*)

2025-Mar – 30% Design Submittal (*complete*)

2025-Nov – 60% Design Submittal Due

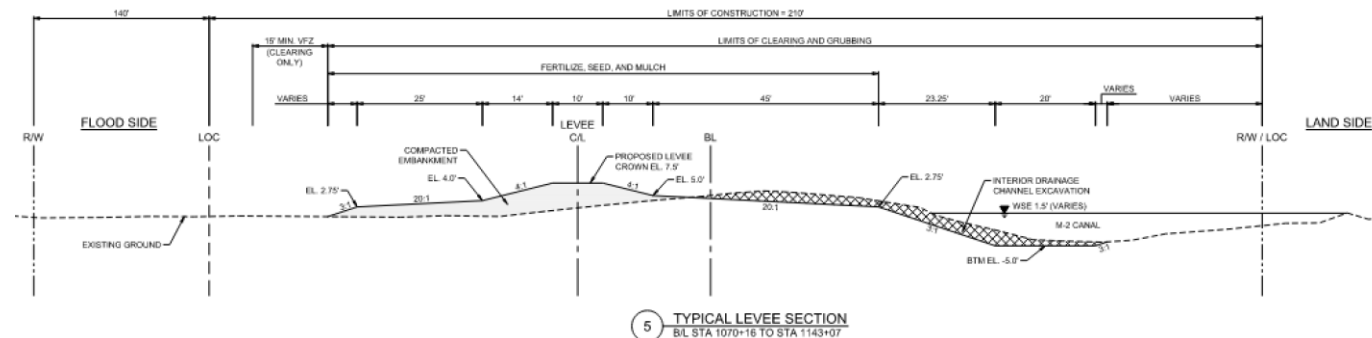
2026-May – 95% Design Submittal Due

2026-July – 100% Design Submittal Due

2026-Nov – Bidding/Contracting Phase Completed

2027-Jan – Contractor Issued Notice to Proceed

2028-July – WSCL Construction Completed



M-2 East Pump Station & Drainage Structure (Phase 2)

M-2 East PS & DS Features

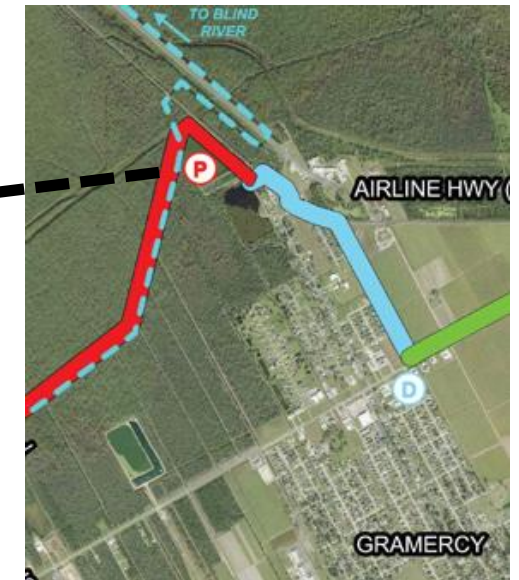
- Permanent closure at eastern end of M-2 Canal
- Includes 325-400 CFS pump station
- (4) 8 x 8 sluice gates (or equivalent) for gravity drainage during non-flood conditions.
- Drive across access bridge
- T-walls transitions
- T/Wall elevation to 2070 design elevation of 13.4'.
- Scour protection on intake and discharge
- Anticipated to be un-manned station.



*M-2 East Pump Station and Drainage Structure Plan View
(from Permit Application)*

Estimated Schedule

- 2025-Q2 – Grant Funds Awarded
- 2025-Q3 – Begin Design
- 2027-Q2 – Design Completed
- 2027-Q3 – Begin Construction
- 2029-Q1 – End Construction



M-2 East Location

Upcoming Schedule Items

Wetland Mitigation

- Last step before issuance of permit
- Estimated cost of \$2M-\$2.5M, likely through a mitigation bank
 - Coordinating with NFS to provide additional funding to cover the cost
- Anticipate returning to council in October to approve mitigation purchase

Land Acquisition

- After completion of 60% Design will finalize ROW Maps
- ROW Maps provided to appraiser which will then be used to prepare offers to landowners