



# Elementary All-State Chorus Music Teacher Audition Prep 2024-2025

## Important Dates

Thursday, August 1, 2024	Full Audition Information Packet and <b>Sample</b> recorded audition script posted on FEMEA website
Monday, September 2, 2024	<b>Official Backing Track</b> is posted on FEMEA website. <i>This is the backing track that must be used for the audition.</i>
Thursday, September 12, 2024	<b>NEW!</b> Deadline to <b>submit paperwork</b> for All State Chorus auditions
Thursday, September 26, 2024	Deadline to <b>submit audition recordings</b> <b>Membership must be current to submit any audition materials.</b>
Friday, October 11, 2024	<b>Audition results</b> posted by 5:00pm ET ( <i>subject to change</i> )
Friday, October 25, 2024	Deadline to postmark <b>participation materials</b> and <b>submit fees</b> for accepted singers
Monday, November 4, 2024	Parts assignments and rehearsal recordings posted, and music sent to participating schools

## FMEA All-State Elementary Chorus Goals

The mission and purpose of the FEMEA All State Chorus is to:

- Inspire a love for choral singing through the highest quality honor choir experience
- Promote social growth, belonging, and community
- Stretch young minds through diverse, inclusive, and thought-provoking repertoire

*We are very excited that you have chosen to audition your students for the FEMEA All State Elementary Chorus! Our conductor this year will be Mary Biddlecombe, and we are looking forward to your students potentially having the opportunity to work with her. Please read this packet thoroughly, click here for answers to [Frequently Asked Questions](#), and then email your District Chair with any questions.*

## Requirements

<b>Teacher Eligibility</b>	<p>Any music teacher who wishes to audition students enrolled in a DOE course that he/she personally teaches, for the FMEA All-State Elementary Chorus MUST pay their NAFME, FMEA and FEMEA (\$35) dues before submitting auditions. The music teacher must hold full active membership in FEMEA. <a href="#">Please click here for more information.</a> <b>Each FEMEA member may audition an unlimited number of students for the FMEA All-State Elementary Chorus. Only 5 students per school will be accepted into the ensemble.</b></p>
<b>Student Participation Requirements</b>	<ul style="list-style-type: none"> <li>• Students must be in 4th or 5th grade, have unchanged voices, and be currently participating in an elementary school or home school association music program.</li> <li>• Be recommended by the music teacher of record for that school and the principal.</li> <li>• Sign a participant contract in which the student agrees to demonstrate appropriate behavior while at the convention center.</li> <li>• Memorize all music by January 8, 2025.</li> <li>• Wear black dress pants or slacks (no jeans or leggings), a white long-sleeved shirt or blouse that can be “tucked in” (no t-shirts) and black low-heeled or flat dress shoes for the concert performance.</li> <li>• Participate in all rehearsals and the concert to be held in Tampa from Wednesday January 8, 2025, through the concert on Thursday, January 9, 2025.</li> </ul>

## 2024-25 Fees

*All fees are nonrefundable.*

Description	Amount	Deadline & Other Information
<b>Audition Fee</b>	<b>\$20.00</b> per nominated student	<p>Fees are payable <a href="#">online by credit card</a> or via school/PTA check or money order made payable to FEMEA. All forms must be postmarked by September 12, 2024 and mailed to: <b>FEMEA All-State Auditions</b> <b>7509 Glenmoor Lane</b> <b>Winter Park, FL 32792</b> <a href="#">Upload Online Submissions Here</a></p>
<b>Materials Fee</b>	<b>\$35.00</b> per selected student  <b>\$25.00</b> per teacher	<p>Fees for materials are payable online by credit card or via school/PTA check or money order made payable to FEMEA. You will receive additional information about where to mail fees if your student is selected to participate.</p>
<b>FMEA Conference Registration Fee</b>	<b>\$75.00</b> per selected student  <b>\$75.00</b> per chaperone (the first chaperone for each student is free)	<p>Music teachers pay all conference fees directly to FMEA when registering for the conference. <b>The first chaperone is free.</b></p>

## Teacher Preparation Checklist

Please follow these directions thoroughly. Click here for answers to [Frequently Asked Questions](#). [Email your District Chair](#) with additional questions.

1. Join or renew membership for NAFME, FMEA, and FEMEA.
2. Seek permission from your principal to participate in the All-State Chorus.
3. Select students who meet eligibility requirements and communicate with their parents/guardians.
4. **Prepare all audition music with students.** Consider printing and using rubric for self check and teacher-evaluation prior to recording.
5. Check recordings to ensure that...
  - Student's voice is clearly audible throughout the recording
  - The recording is free of distortion or static
  - The recording does not contain audio interruptions (i.e. intercom, phone, door opening)
6. Read the directions for preparing your audition package, as outlined below.

## Preparing the Audition Package

There are very specific directions regarding the contents of your audition package. Following these directions will help to ensure that your student auditions are given the opportunity to be heard by the judges.

### Data Collection Tool - available on website

Print and distribute copies of [All-State Data Collection Worksheet](#).

### Audition Entry

- Sign into FMEA website, then scroll looking on the left for **Enter All-State Auditions** to find all the links to paperwork
- Print online-generated Chorus application forms to send home with your students for parents/guardians and to sign and fill in or change information. If you don't have all the information needed prior to printing the forms, enter what you have. Information added or changed on the forms by the parents must also be added or changed in the website.
- An online Invoice/Teacher Contract will be generated and must be printed and signed by the teacher and principal.

### Signatures

- Obtain one complete application form with **original** principal, music teacher and parent/guardian signatures for each student
- Obtain the Invoice/Teacher Contract, with music teacher and principal signatures.
- **NOTE:** If you are auditioning students for Orff Ensemble and Elementary Chorus, all the fees will appear on one invoice.
- **Retain original signed student participation contracts for submission with materials fees.**

### Secure Payment

- Secure audition fees from each nominated student.
- Communicate with your Bookkeeper/PTA as to their process to make payment to FEMEA.
- Paper Check Payment will be submitted with original copies of applications and invoice by U.S. Mail.
- Credit Card Payment will be submitted by uploading PDFs of applications, invoice and credit card receipt.

### Submission

- [Paper Check/Hard Copy Submission](#)  
All State Auditions  
7509 Glenmoor Ln  
Winter Park, FL 32792
- [Credit Card Payment/Online Submission](#)
- Retain a hard copy of your paperwork for your records. No additional copies are required to be sent.

# Creating Audition Recordings

Please start reading through these directions now to help you become comfortable with the recording process.

## Setting Up the Recording

Students will be able to simultaneously **listen** and **record** themselves in order to successfully complete the All-State audition process. This can be accomplished via 1 or 2 electronic devices:

- **Computer/Laptop (1 device) - RECOMMENDED**
  - Open up a digital audio workstation (Garageband, Audacity, or other program of your choosing)
  - Insert the official audition recording script as a separate track; set this track's setting to headphones only
  - Insert wired headphones with working microphone (recommended) or bluetooth headphones. Be sure to check the digital audio workstation's input recording settings to ensure that the student's voice will be able to be recorded
  - Create a new track within which the student will record and test to ensure settings are correct
  - Press record to test that the recording script is playing correctly in the headphones and **not aloud over the computer's speakers**
- **Computer/Laptop + Cell Phone/Tablet (2 devices)**
  - Open up a digital audio workstation on the computer/laptop (Garageband, Audacity, or other program of your choosing)
  - Create a new track within which the student will record and test to ensure input settings are correct
  - Pull up the official audition recording script on the cell phone/tablet and connect wired headphones with working microphone (recommended) or bluetooth headphones; **do not allow the recorded script to play out of the device's external speakers**
  - Press record on the computer/laptop and play on the cell phone/tablet as close to simultaneously as possible
- **Cell Phone/Tablet + Cell Phone/Tablet (2 devices)**
  - On one device, open a recording application
  - On the other device, pull up the official audition recording script on the cell phone/tablet and connect wired headphones with working microphone (recommended) or bluetooth headphones; **do not allow the recorded script to play out of the device's external speakers**
  - Press record/play on both devices as close to simultaneously as possible

## Teacher Directions

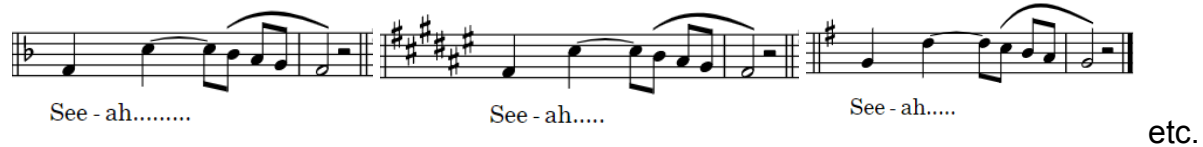
1. Set up the recording using the instructions above.
2. Start the recording (remember, any pauses/skips/stops in recording can result in disqualification)
3. Play the recorded script
  - Before recording, we suggest that you say "We are going to make a recording for the FMEA All-State Elementary Chorus audition. When I start the recording, we will record the entire audition without stopping the recording. Do not say your name, my name, or our school name during the recording. I will not be able to talk during the recording."
4. Check to ensure the student can hear the script and that the script is not being played aloud. Observe the student as they complete the audition components as instructed on the recorded script.
5. **Do not stop or pause recording until the audition is complete.**
6. Listen to the entire recording to ensure that it is of quality and free from static, interference, or background noise.
7. **Do not edit the track.** Please submit as is. Yes, there will be gaps of silence (and this is by design).
8. **Do not sing with, coach, or speak to your student during the recording.** Any suspected teacher participation in the recording process will be flagged for review and possible disqualification.

# Audition Components

## Part 1: Vocal Exercises

The following is an example of the type of exercise that will be included in the audition itself.

To prepare students, use this or a similar vocal exercise. First, play the piano with the students as they perform the exercise. As they get higher, use the piano only to provide them with the new tonal center, but do not play the exercise note-by-note.



See - ah.....                      See - ah.....                      See - ah.....                      etc.

## Part 2: Tonal Melodies

The following are examples of the type of exercise that will be included in the audition itself.

To prepare students, use these patterns and make up your own patterns, to challenge and assess your singers' aural and recall skills. Play them on the piano and have students repeat them back on the syllable "la". Use major, minor, and chromatic intervals alongside various different rhythms.



## Part 3: Partner Song

During the audition, singers will be asked to perform either Part 1 or Part 2 of ***Shake the Papaya Down***, whilst hearing the other part in their ear. Students should practice BOTH parts, as they will not know which one they are to sing, until the official recording track is released on September 1.

This is meant to assess a child's vocal independence. Independence cannot be taught as a one-off lesson, it must be carefully developed over time. Use this exercise, as well as other partner songs and canons you know, to empower your students to be vocally independent. We recommend practicing at a tempo where the quarter note is ca. 112 bpm.

## Part 1



Ma-ma says no play, this is a work day. Up with the bright sun; get all the work done.



If you will help me, climb up the tall tree, shake the pa-pa - ya down.

## Part 2



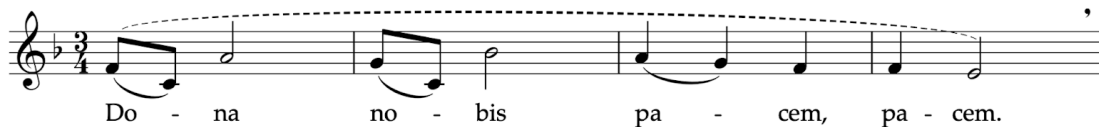
Shake them down, shake them down, climb the tall tree shake them down.



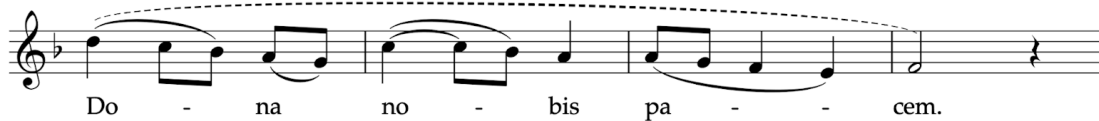
Shake them down, shake them down, shake the pa-pa - ya down.

## Part 4: Vocal Performance

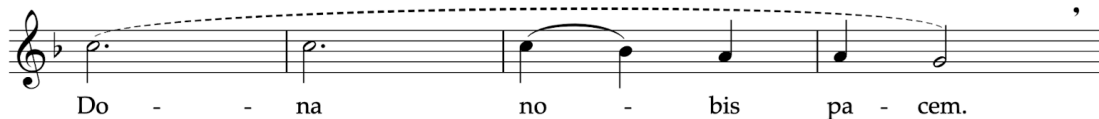
Whilst teaching your singers *Dona Nobis Pacem*, be mindful of the skills that are being assessed in this portion. These criteria can be viewed in the following rubric. Singers will perform/record this as the final step of their audition. We recommend practicing at a tempo where the quarter note is ca. 86-92 bpm.



Do - na no - bis pa - cem, pa - cem.



Do - na no - bis pa - - - cem.



Do - - - na no - bis pa - cem.



Do - na no - bis pa - - - cem.

# FMEA All State Elementary Chorus Audition Rubric

Part 1 - VOCAL EXERCISES					
	<a href="#">Model Recording</a>	<a href="#">Model Recording</a>			
	4 Points	3 Points	2 Points	1 Point	0 Points
<b>Tone Quality</b>	Utilizes clear, centered, rich head voice for entire exercise  No pushing/sliding	Head voice is used for entire exercise, but tone is breathy or thin  No pushing/sliding	Head voice is present, but chest voice is used at inappropriate places  Tone is raspy and/or unsupported	Chest voice/pop-style is used more frequently than head voice  Tone is pushed or strained	Exercise cannot be completed accurately due to use of speaking voice, pitch matching issues  Exercise is not completed at all
<b>Vowel Placement &amp; Formation</b>	Consistently utilizes tall, rounded, forward-placed vowels	Consistently utilizes tall vowels; placement is occasionally nasal or pulled back, but not consistently	Tall vowels are utilized some of the time, but not consistently  Placement is consistently pulled back or nasal	Vowels are consistently spread or closed  Placement is almost always pulled-back or nasal	Does not complete exercise
Part 2 - TONAL MELODIES					
<b>Intonation/Pitch Accuracy</b>			Pitches are sung correctly and in tune for the entire exercise	1-2 pitch errors OR pitches are sung correctly but there are occasional intonation issues	3+ errors in pitch accuracy  Pitches are frequently out of tune
Part 3 - PARTNER SONG					
	<a href="#">Model Recording</a>	<a href="#">Model Recording</a>			
<b>Independence</b>			Correctly sings assigned melody with no pitch or rhythmic alterations	Maintains assigned melody with 1-2 notable errors in pitch or rhythmic accuracy	Performs assigned melody with 3+ notable errors in pitch or rhythmic accuracy  Utilizes speaking voice at any time  Melody is difficult to discern.
Part 4 - DONA NOBIS PACEM					
	<a href="#">Model Recording</a>	<a href="#">Model Recording</a>			
<b>Style</b>			Consistently demonstrates tone quality, placement, and vowel shapes consistent with bel canto style singing	Demonstrates understanding of tone quality, placement, and vowel shapes consistent with bel canto style singing, but does not apply it consistently	Does not demonstrate tone quality, placement, and vowel shapes consistent with bel canto style singing
<b>Breath Control/ Phrasing</b>			Holds notes to full rhythmic value and maintains 4-bar phrases with no errors	Generally holds notes to full rhythmic value and maintains 4-bar phrases, but with 1-2 notable errors	Demonstrates 3+ errors in rhythmic value/phrasing  Does not consistently hold notes to full value or maintain 4-bar phrases
<b>Intonation/Pitch Accuracy</b>			Accurate pitch and intonation for entire exercise	2-3 pitch or intonation errors	4+ errors in pitch accuracy
<b>Rhythmic Accuracy</b>			Accurate rhythm throughout; Maintains prescribed steady tempo throughout	1-3 rhythm errors; Maintains steady tempo at faster or slower than 86-92 bpm	4+ rhythm errors  Does not maintain steady tempo



*Any audition component that cannot be audibly discerned due to poor recording quality OR lack of volume from the auditionee will result in an automatic 0 for that category.*

## Disqualification & Score Adjustments

To maintain the integrity of the audition process and to ensure student safety and security are maintained, please avoid these mistakes so that your student audition recordings are considered for selection.

### Logistical Errors

Your student's audition may be disqualified by the District Chair if...

- Teacher is not an FMEA **and** FEMEA member
- Paperwork is incomplete
- Fees are not attached
- Requisition, purchase orders, or personal checks are used as payment for audition fees (these are NOT acceptable forms of payment)
- CDs or other physical recordings are submitted for the auditions (only digital files uploaded to the FEMEA website are acceptable)
- Audition paperwork is postmarked or uploaded **after September 26, 2024**

### Audition Errors

Your student's audition will be adversely impacted, and possibly disqualified, by the following...

- Teacher's voice is audible at any point during the recording
- Recording is stopped/paused during the audition
- Recording is edited
- Audition exercises are incomplete or unable to be accurately judged due to poor recording quality
- Auditions are not uploaded to the FEMEA website
- Student's name, teacher's name, or school name is mentioned on the recording
- Audition fees are not paid.

## After the Auditions are Submitted

### Audition Results

- The 2025 All-State list will be posted on a password-protected section of the FEMEA Member content, <https://flmusiced.org/FLmusicApps/Membership/Default.aspx> on October 11, 2024 (subject to change).
- A panel of adjudicators will review all auditions. Each audition will be scored by at least 3 judges. After judging is complete, approximately 200 high-scoring students will be invited to participate in the FMEA All State Elementary Chorus.
- All judges' decisions are final. No audition recordings will be re-heard.
- Due to logistical constraints and confidentiality standards, we are unable to provide individualized feedback on a student's audition.