

KL-95 Series PFA/PTFE Pressure Transmitter with Local Display



Features

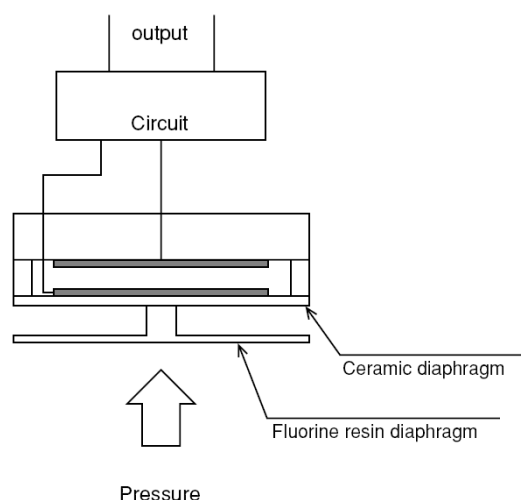
- $\pm 1\%$ full-scale accuracy
- Local LED Display
- All PTFE/PFA wetted part construction
- No o-ring seals or fill fluids
- Flow-through design insures minimal "dead volume"
- Choice of end fittings: Flare, Pillar, or Tube

Description

The KL95 is a "flow through" pressure transducer suitable for use in monitoring pressure of various high-purity and corrosive/aggressive fluids. The "flow through" design provides for minimal "dead volume" which reduces the potential for contamination of the measured fluid/process. The KL95 is provided with an integrally mounted local LED display and is available in two standard pressure ranges.

Operation

The o-ring free design minimizes the generation of containment and the elution of metal, which makes it suitable for pressure monitoring in the semiconductor industry. All wetted parts are made of fluropolymers (PFA, PTFE). The sensor is IP54 rated to meet the application requirement for semiconductor's wet environments.



Applications

- High-purity DI water, slurry, and aggressive chemical monitoring
- Filtration condition monitoring
- General pressure monitoring

Measurement Specifications

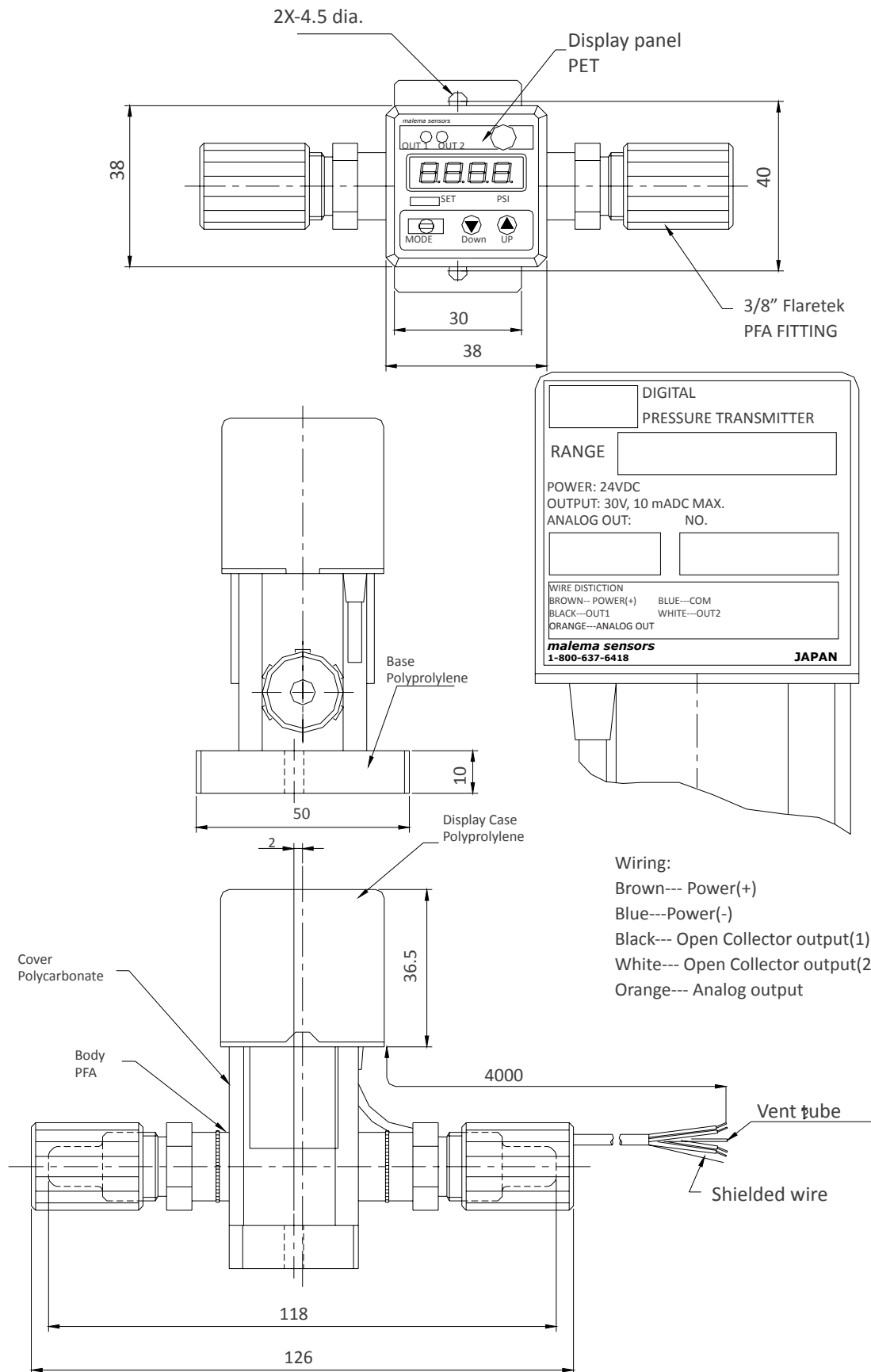
Material of wetted parts		PFA / PTFE
Material of case	Body	PFA/PTFE
	Display case	Polypropylene, PET
Pressure Range (Maximum display value)		0 to 50psi (50.0), 0 to 75psi (75.0)
Allowable maximum pressure		105psi
Display (LED 4 digits)	Accuracy	±1% F.S. ±1 digit
	Rate	0.2 seconds
Temperature coefficient		±0.05% F.S. / deg.C
Power and supply current		24VDC ±10% (30mA DC max.)
Comparator output	Open collector	2 outputs of type NPN (30VDC, 10mA max)
	Response time	Within 5ms
Analog output	Voltage output	0 to 10VDC
	Current output	4 to 20mA
	Output accuracy	±1% F.S.
	Response time	Within 50ms
Connection types		Flaretek, Super Pillar 300, Tube Ends
Connection sizes		1/4", 3/8", 1/2", 3/4:
Operating fluid temperature range		10 to 60 deg.C
Operating humidity range		35 to 85% RH (non-condensing))
Protection		IP54 (an atmosphere release hole exists)
Cable length		4m
Weight		280g

Corporate Headquarters
 1060 S Rogers Circle
 Boca Raton, FL 33487
 P: (561) 995-0595 F: (561) 995-0622

West Coast Headquarters
 2225 Martin Avenue Suite I
 Santa Clara, CA 95050
 P: (408) 970-3419 F: (408) 970-3426

Asia Headquarters
 29 Woodlands Industrial Park E1 Northtech Unit #
 02-06 Singapore 757716
 P: (65) 6482-3533 F: (65) 6484-4231

Dimensional and Cut-Away Drawings



Corporate Headquarters
1060 S Rogers Circle
Boca Raton, FL 33487
P: (561) 995-0595 F: (561) 995-0622

West Coast Headquarters
2225 Martin Avenue Suite I
Santa Clara, CA 95050
P: (408) 970-3419 F: (408) 970-3426

Asia Headquarters
29 Woodlands Industrial Park E1 Northtech Unit #
02-06 Singapore 757716
P: (65) 6482-3533 F: (65) 6484-4231

Ordering Information

Model Code							Description
KL-95	-	-				-	Pressure Transducer
Body Material Connection Type		M0					PFA Flaretek
		M1					PTFE Tube
		M2					PFA Pillar Super 300
Size			1				1/4 "
			2				3/8 "
			3				1/2 "
			4				3/4"
			-				
Input / Output				1			24 VDC / 0 to 10 VDC
				2			15 to 24 VDC / 4 to 20 mA
				3			12 to 24 VDC / 1 to 5 VDC
				4			12 to 24 VDC / 0 to 5 VDC
					-		
Pressure Range					50		0 to 50 psi
					75		0 to 75 psi

Extraction Report by CT Associates, Inc.

	Extraction Rate (ng/cm2/day)		
Component	1day	7 days	14 days
KL95-M02	1.02	0.35	0.24

This extraction rate is below the standard requirement of less than 0.5 ng/cm2/day at 7 days.

Corporate Headquarters
1060 S Rogers Circle
Boca Raton, FL 33487
P: (561) 995-0595 F: (561) 995-0622

West Coast Headquarters
2225 Martin Avenue Suite I
Santa Clara, CA 95050
P: (408) 970-3419 F: (408) 970-3426

Asia Headquarters
29 Woodlands Industrial Park E1 Northtech Unit #
02-06 Singapore 757716
P: (65) 6482-3533 F: (65) 6484-4231