



ISIPHO ELECTRICAL



COMPANY PROFILE

CK - 2016/395885/07

**Unit 27
30 Surprise Road
Westmead
Pinetown
3610**

**Tel: 031 9425925
Mobile: 0825909545**

**info@isiphoelectrical.co.za
www.isiphoelectrical.com**

Table of

CONTENTS



01 OVERVIEW

07 COMPLETED & CURRENT PROJECTS

02 BUSINESS PARTICULARS

08 BBB-EE LEVEL

03 VISION & MISSION STATEMENT

09 JOB CREATION

04 OUR COMMITMENT

10 ORGANOGRAM

05 LIST OF SERVICES

11 REFERENCES

06 DIRECTORS'S EXPERIENCE

12 CONCLUSION

01. OVERVIEW

Isipho Electrical (Pty) Ltd was established and registered in 2016. It is engaged in business of construction, maintenance, and repair of medium/low voltage infrastructure. Construction, Maintenance, and repair Industrial & Domestic electrical equipment. Issuing of certificate of compliance. Electrical fence construction, repair and issuing of COC. Green building projects research and implementation. Access control and CCTV maintenance. The business head office is in KwaZulu Natal however we do have satellite offices in different provinces as an when we get projects.

Isipho Electrical (Pty)Ltd secret lies in its ability to combine high quality services and affordable rates. This is made possible through hiring highly skilled staff and subjects them to a thorough training.

Isipho Electrical is a dynamic construction company specializing in electrical solutions. With a steadfast commitment to quality, safety, and innovation, we take pride in delivering exceptional services that power the future of communities. Our dedicated team thrives on excellence, ensuring projects are completed on time and within budget. At Isipho Electrical, we embrace cutting-edge technology and sustainable practices, positioning ourselves as industry leaders. Join us on our journey to redefine electrical construction, setting new standards and contributing to the growth and development of the regions we serve.



02. BUSINESS PARTICULARS



Legal Name Private Company	Registration Number 2016/395885/07	Name Of The Business Isipho Electrical
CIDB Grading 6 EP / 1 CE	Postal Address Unit 27 30 Surprise Road Westmead Pinetown 3610	Business Address Unit 27 30 Surprise Road Westmead Pinetown 3610

Contact Person: Sipho Thabethe
Cell-Phone Number: 082 590 9545
Office Number: 031 942 5925
Email Address: sipho@isiphoelectrical.co.za
Website: www.isiphoelectrical.com

03. VISION & MISSION STATEMENT

Mission Statement

Our mission at Isipho Electrical is to provide our clients with high-quality electrical construction services, ensuring safety, efficiency, and reliability in every project. We aim to contribute to the growth and development of communities by powering the future with sustainable and innovative electrical solutions.

Vision Statement

At Isipho Electrical, we envision becoming a leading force in the electrical construction industry, recognized for our commitment to excellence, cutting-edge technology, and environmental responsibility. We aspire to be the go-to partner for clients seeking reliable, forward-thinking electrical solutions. We believe in honesty, integrity, and transparency in all our dealings with our clients. We value teamwork, professionalism, and continuous learning and improvement.

Our Goal

Our goal is to consistently exceed client expectations by delivering projects on time, within budget, and to the highest standards of quality. We strive to foster a collaborative and empowering work environment for our team, encouraging professional growth and innovation. Isipho Electrical aims to be a catalyst for positive change in the construction landscape, setting new benchmarks for excellence in electrical engineering.

04. OUR COMMITMENT

At Isipho Electrical, we are committed to:

1. **Quality**- Ensuring the highest standards in every project.
2. **Safety**- Prioritizing the well-being of our team and clients.
3. **Innovation**- Embracing cutting-edge technology for forward-thinking solutions.

Expertise

Our expertise spans:

1. **Electrical Construction**- From design to implementation, we bring power to your projects.
2. **Innovative Solutions**- Pioneering new approaches for efficient and sustainable outcomes.
3. **Safety Assurance**- Rigorous measures to guarantee a secure working environment.

05. LIST OF SERVICES

- Maintenance of Domestic & Industrial Electric Equipment.
- House Services Connection.
- Maintenance & repairing electronic Equipment.

- Construction, maintenance of MV/LV electrical cable and overhead, overhauling RMU Units, Refurbishment & maintained of Mini subs (inclusive commissioning of units).

- Specification & designing of electrical, electronic circuits.
- Issue of Compliance Certificate.
- Building maintenance, construct, repair electric fence.

- Installation of Generators (1kVA-315kVA).
- UPS Systems Monitoring & Maintenance.
- CCTV/Audio Installation & Maintenance.



DIRECTOR'S EXPERIENCE

- EMPLOYER** : **ESKOM**
POSITION : **Electrician**
JOB DUTIES : Fault finding from 220V up to 11KV lines, Switching, linking, Safety testing & earthing lines and substations from 11KV to 132KV lines and switchgear.
Preparing and carrying out Shut downs
Elected Safety Reps, First Aider, Fire & Evacuation Warden, Acting Supervisor, Mentoring Apprentice
- EMPLOYER** : **ESBI (ELECTRICITY SERVICES BOARD INTERNATIONAL)**
POSITION : **IRELAND**
JOB DUTIES : **LINESMAN**
Pole planting, stringing lines with required specification using high tech Tools mounting. Transformers, circuit breakers, boosters, links, LV Switching boxes and the safe use of climbing irons, meeting daily targets.
- EMPLOYER** : **ZAKHELE ELECTRICAL**
POSITION : **CONSTRUCTION MANAGER**
JOB DUTIES : Supervise teams, make sure Eskom standards and regulations are adhered to.
Co-ordinate with Eskom on a regular basis to make sure targets are met.
Prevent Occupational risk and make work place safe at all times.
- EMPLOYER** : **ZIZAMELE ELECTRICAL**
POSITION : **GENERAL MANAGER**
JOB DUTIES : Manage all company departments that were operating under eThekweni Municipality doing the following contracts (Maintenance, Faults, Tree Cutting, and Revenue)
Conducting on job observations on a regular basis on site supervision
Follow up on invoices and co-ordinate all projects

The above companies are just a few to highlight Mr. Siphon Thabethe's vast work experience and immense knowledge in the Electrical Engineering field to complement his tertiary qualifications which include a Diploma in heavy current and qualified as an installation electrician.

The CEO, Mr. Siphon Christopher Thabethe has worked in the electrical industry for more than 20 years. His experience has assisted him to form Isiphon Electrical (Pty) Ltd. He is a kind of owner who is practically involved in all divisions of his business. He is also surrounded by people with a vast experience in different fields as the organogram indicates.

07. COMPLETED & CURRENT PROJECTS

COMPLETED PROJECTS

»» eThekwini Municipality -E 9554A Faults

The Repair of all faults occurring within eThekwini Electricity's area of Supply during a 36-month period

»» Precius Trading - E 9422

Installation & Replacement of lamps & outdoors
Streetlight installation

»» Zizamele Electrical -E9313

Maintenance & Repairs of Medium Voltage /Low Voltage Substations, OHM/UGM

»» Zizamele Electrical & Maintenance-

House Services

»» Building Maintenance –Dannhauser Local Municipality

Panel of electrical contractors for electrification projects.

CURRENT PROJECTS

»» Panel – E9692A

The maintenance and repair of medium voltage and low voltage substations and medium and low voltage overhead and underground mains for MV / LV Operations during a thirty-six period. Attend emergency repairs for our client (eThekwini Metro).

»» Maintenance – E9691A

The maintenance and repair of medium voltage and low voltage substations and medium and low voltage overhead and underground mains for MV / LV Operations during a thirty-six period.

»» Building Maintenance – CSIR Company

Building maintenance for the above building & all electrical equipment including energy save solution (change of lighting system in their green energy). Problem solving & provides engineering designs for the company to their respective client who required the service.

»» Elandskop Cabling Work -

Battery energy storage systems (BESS) sub- station.
Cabling & termination scope.
MV / LV cabling (installation only).
Glanding & terminations (free issue).
MV / LV terminations.
Trenching for mv cables.
Cable testing.
Lighting / light masts and lights.

08. BBB-EE

Isipho Electrical (Pty) Ltd is proud to announce that we have achieved a BBB-EE level 2 rating. This rating reflects our strong commitment to Broad-Based Black Economic Empowerment principles, emphasizing inclusivity, transformation, and economic empowerment. We continually strive to improve our BBB-EE standing, contributing to a more equitable and diverse business landscape in line with South Africa's economic empowerment goals.

Since 1994 the government has put in place initiatives and programs which seek to promote the South African economy and provide an environment that is conducive to all aspiring business people.

One such initiative is the enactment of Broad-Based-Black Economic Empowerment Act (“BBBEE”). The main purpose of the Act is to ensure that the previously disempowered individuals play a prominent role in the mainstream economy. The new legislation requires that South African business be rated in terms of compliance with BBBEE Act. Isipho Electrical (Pty) Ltd is 100% black owned by Historically Disadvantaged Individual (HDI’S).

Isipho Electrical (Pty) Ltd understands businesses will achieve satisfactory rating if they do the following:

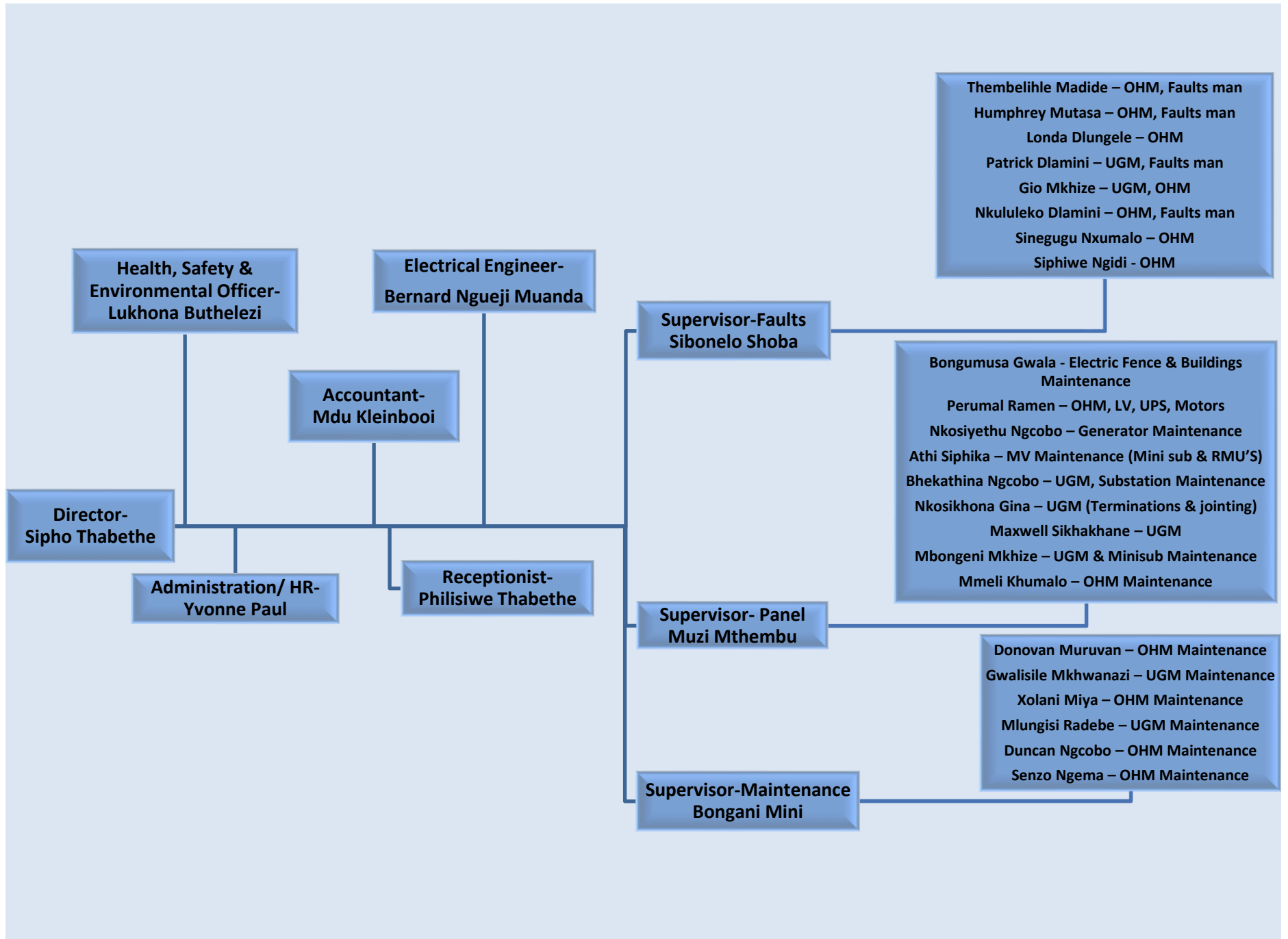
- Previously Disadvantaged Individuals (“HDI’s) partake in the ownership and management of the organization.
- Procurement of goods and services to HDI owned organizations.
- Commitment to uplifting of HDI’s through provision of funds to retrain and re-skill staff to enable them to play a meaningful role within the organization.

09. JOB CREATION



Isipho Electrical takes pride in its role as a catalyst for job creation. By fostering a collaborative and empowering work environment, we aim to generate employment opportunities that contribute to the economic growth of communities. Through our commitment to excellence and innovation, we not only power the future but also provide meaningful careers, skills development, and professional growth for individuals in the electrical construction industry. Join us in building not just structures but also sustainable careers.

10. ORGANOGRAM



11. REFERENCES

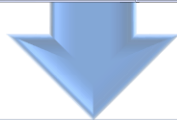
eThekweni Municipality			
Municipality: EThekweni Electricity	Services Rendered: Faults repairs for MV/LV network	Contact Person: Nyaniso Mlilo	Contact number 031 311 9528



Private Sector			
Private Sector: Zizamele Electrical Maintenance & General	Services Rendered: Street lights, house service connections and disconnections	Contact Person: Thami Khumalo	Contact number: 031 7022 399

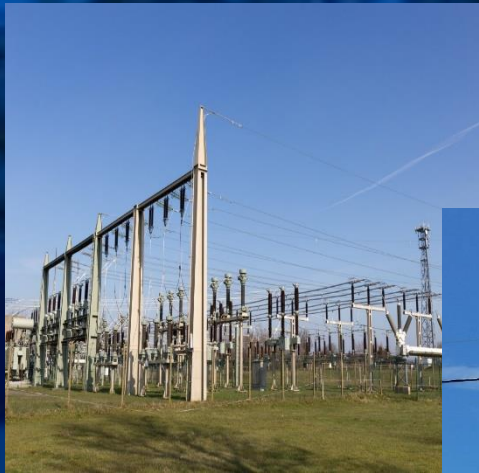


Private Sector			
Private sector: CSIR	Services Rendered: Coc issue, Commercial Electrical repairs & installation	Contact Person: Anesh Mistry	Contact number: 031 242 2351 082 650 3700



Private Sector			
Private sector: Elandskop	Services Rendered: Battery energy storage systems (BESS) sub- station Glanding & terminations (MV/LV), MV / LV cabling	Contact Person: Sivuyile Paliso	Contact Number: 083 746 7457

12. CONCLUSION



Isipho Electrical is well organized in terms of manpower and financial resources to undertake any given task. It is up to date with all legal compliance and is ready in all aspects.

Keys to success

- Quality Excellence
- Accessible business location.
- Quick service.
- Sustainability.
- Team empowerment.

