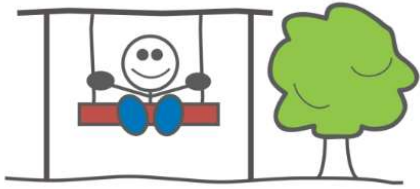


# Pembina Valley Child Care Centres Inc.



## Hive Site

580 1<sup>st</sup> Street

Morden, MB R6M 1R5

Phone: (204) 822-3233, Fax: (204) 822-4656

Email: [scobb.pvccc@outlook.com](mailto:scobb.pvccc@outlook.com)

[www.pembinavalleychildcarecentres.com](http://www.pembinavalleychildcarecentres.com)

**Executive Director:** Shuana Richards

Email: [srichards.pvccc@outlook.com](mailto:srichards.pvccc@outlook.com)

**Assistant Director:** Michele Hutchinson

Email: [mhutchinson.pvccc@outlook.com](mailto:mhutchinson.pvccc@outlook.com)

**Morden Site~Site Manager:** Nancy Davison

Email: [ndavison.pvccc@outlook.com](mailto:ndavison.pvccc@outlook.com)

**Manitou Site ~ Site Manager:** Hailley Mitchell

Email: [hmitchell.pvccc@outlook.com](mailto:hmitchell.pvccc@outlook.com)

**Hive Site ~ Site Manager:** Sidney Cobb

Email: [scobb.pvccc@outlook.com](mailto:scobb.pvccc@outlook.com)

At Pembina Valley Child Care Centres Inc., we strive to provide a safe, caring learning environment for children, educators and families. We believe in equality and respect diversity.

## Hive Site

- Established in February 2020.
- Licensed for 90spaces, 16 infants, 24 toddlers, 32 preschool, and 18 pre-kindergarten children
- Open from 6:00 am - 6:00 pm Monday - Friday.
- Open year-round. Christmas holidays, in services etc.
- Subsidy available for those who qualify.
- Receipts issued for income tax purposes.

### Philosophy

Children learn and grow by exploring a stimulating environment and are provided with warm, caring individuals to offer guidance as well as creative and collaborative programming.

Early childhood should be a time of wonder, warmth, security, exploring and discovering. All children are creative and receptive; the educators strive to nurture and encourage these qualities in the children who attend our program.

## Family Orientated

You are the most important person in your child's life. To develop meaningful parent-caregiver relationships and to meet your child's needs as fully as possible, we offer you the following:

- Educators will initiate and welcome regular communication about favourite activities, new friends, and milestone accomplishments.
- Parent/Child conferences offered every June to discuss your child's developmental progress.
- Open door policy - You can come and visit anytime your schedule permits, including field trips, and holiday celebrations.
- Enrolment preference is given to those who have siblings already enrolled.
- Volunteer opportunities are available on our Parent Board of Directors.

### Mission Statement

It is our purpose to provide an atmosphere that encourages social, emotional, physical, and intellectual growth and development of the child as a whole. We strive to provide quality care and learning opportunities for children of working parents and students, children with additional support needs, and those who use the Centre for respite, socialization, or experience.

## **Infant Room**

We are licensed for 16 infants with a ratio of 1:4. We have two infant rooms and can have 8 children enrolled in each. Infants are classified as children from the ages of 12 weeks to 2 years. We provide an enriched learning environment for infants by providing developmentally appropriate toys, books, activities, and songs.

## **Toddler Room**

We are licensed for 24 toddlers with a ratio of 1:6. We have two toddler rooms and can have up to 12 children enrolled in each. Toddlers are classified as children from 2-3 years of age. We provide developmentally appropriate learning environment including story time, science, activities, artwork, special community visitors and gross motor activities.

## **Preschool Room**

We are licensed for 32 preschool children with a ratio of 1:8. We have two preschool rooms that each can have up to 16 children enrolled in them. Preschool children are classified as children 3 to 4 years of age. We provide developmentally appropriate learning environment including story time, science, activities, artwork, special community visitors and gross motor activities.

## **Pre-Kinder Room**

We are licensed for 18 pre-kindergarten children with a ratio of 1:9. Pre-kindergarten children are classified as children aged 4 -5 years of age. We provide developmentally appropriate learning environment including story time, science, activities, artwork, special community visitors and gross motor activities.

## **Services**

- We serve 2 snacks consisting of two or three food groups from Canada's Food Guide, with one of the groups being fruits or vegetables. We make accommodations for children with allergies or special snack requirements.
- Milk is provided with lunch.
- We are wheelchair accessible, and we accept children with additional support needs.

### **Fastoche**

Our Child Care Facilities utilize a program called 'Fastoche'. Our educators stay connected with families through this program by sending emails, journals and/or pictures!

Families may also send our Facility information about their child's attendance as well as completing the screening tool via text message.

Hive Site's Fastoche number is

**204-674-3150**

## **Fees**

### Infant ~ 3 Months-2 Years

Hot Lunch	\$3.00/meal
Half Day (0-4 Hours)	\$5.00
Full Day (4-10 Hours)	\$10.00
10 + Hours	\$15.00

### Toddler & Preschool ~ 2-5 Years

Hot Lunch	\$3.50/meal
Half Day (0-4 Hours)	\$5.00
Full Day (4-10 Hours)	\$10.00
10 + Hours	\$15.00

**“Education is the kindling of a flame, not the filling of a vessel.”**

**-Socrates**

