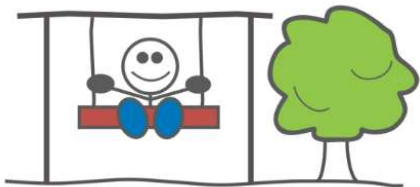


## Pembina Valley Child Care Centres Inc.



### Manitou Site

Box 248 - 516 Souris Ave.

Manitou, MB R0G 1G0

Phone: (204) 242-3484, Fax: (204) 822-4656

Email: [mhutchinson.pvccc@outlook.com](mailto:mhutchinson.pvccc@outlook.com)

[www.pembinavalleychildcarecentres.com](http://www.pembinavalleychildcarecentres.com)

**Executive Director:** Shuana Richards

Email: [srichards.pvccc@outlook.com](mailto:srichards.pvccc@outlook.com)

**Morden Site~Site Manager:** Jodi Betteridge

Email: [jbetteridge.pvccc@outlook.com](mailto:jbetteridge.pvccc@outlook.com)

**Manitou Site ~ Assistant Director:**

Michele Hutchinson

Email: [mhutchinson.pvccc@outlook.com](mailto:mhutchinson.pvccc@outlook.com)

**Hive Site~ Site Manager:** Nancy Davison

Email: [ndavison.pvccc@outlook.com](mailto:ndavison.pvccc@outlook.com)

At Pembina Valley Child Care Centres Inc., we strive to provide a safe, caring learning environment for children, staff, and families. We believe in equality and respect diversity.

## Manitou Community Day Care

- Was incorporated June 1, 2000 and moved to our present location in September 2010.
- Amalgamated in January 2012 with Morden Community Child Care Centre.
- Multi-Aged program licensed for 8 infants and 42 preschool/school age children.
- Open from 6:00 am - 6:00 pm Monday - Friday.
- Open year-round. Christmas holidays, in services etc.
- Subsidy available for those who qualify.
- Receipt issued for income tax purposes.

### Philosophy

Children learn and grow by exploring a stimulating environment and are provided with warm, caring individuals to offer guidance as well as creative and collaborative programming.

Early childhood should be a time of wonder, warmth, security, exploring and discovering. All children are creative and receptive; the educators strive to nurture and encourage these qualities in the children who attend our program.

## Family Orientated

You are the most important person in your child's life. To develop meaningful parent-caregiver relationships and to meet your child's needs as fully as possible, we offer you the following:

- Educators will initiate and welcome regular communication about favourite activities, new friends, and milestone accomplishments.
- Parent/Child conferences offered every June to discuss your child's developmental progress.
- Open door policy - You can come and visit anytime your schedule permits, including field trips, and holiday celebrations.
- Enrolment preference is given to those who have siblings already enrolled.
- Volunteer opportunities are available on our Parent Board of Directors.

### Mission Statement

It is our purpose to provide an atmosphere that encourages social, emotional, physical, and intellectual growth and development of the child as a whole. We strive to provide quality care and learning opportunities for children of working parents and students, children with additional support needs, and those who use the Centre for respite, socialization, or experience.

## Infant Room

We are licensed for 8 infants with a ratio of 1:4. Infants are classified as children from the ages of 12 weeks to 2 years. We provide an enriched learning environment for infants by providing developmentally appropriate toys, books, activities, and songs

## Preschool Room

We have space for 16 preschool children with a ratio of 1:8. Preschool children are classified as children 2 and 3 years of age. We have a dynamic daily program providing group time, craft and science activities, dramatic play, and gross motor opportunities.

## Pre-Kinder & Kindergarten Room

We have space for 16 pre-kinder and kindergarten children with a ratio of 1:9. This room cares for children 4 and 5 years old. We provide developmentally appropriate activities including local fieldtrips, special visitors, crafts, science experiments as well as a variety of indoor and outdoor activities. We walk the kindergarten children to the school in the mornings, as well as pick them up at 3:30pm.

**LAUGHTER**

*is timeless*

**IMAGINATION**

*has no age*

**AND DREAMS**

*are forever*



*-Walt Disney*

## Nursery School

We have space for 15 children on Tuesday and Thursday am and pm with a ration of 1:10. We have mixed classes with both 3- and 4-year-old children. The philosophy of our program is for each child to be encouraged in their creative, cognitive, and social abilities. Your child's individuality and independence will be nurtured by experienced teaching educators in a loving and kind atmosphere. Developmentally appropriate activities like writing, numbers, colors, shapes, crafts, circle time etc. are planned.

## School Age Room

We have space for 15 School age children with a ratio of 1:15. School age children are those who are aged 6 years to 12. We walk the children to and from school. Our school age program offers before and after school care with exciting developmentally appropriate activities planned. We also run full day program for our school age children for Summer, Christmas, and Spring Breaks. We encourage our children to help us plan what they would like to do throughout the summer and breaks.

## Fastoche

Our Child Care Facilities utilize a program called 'Fastoche'. Our educators stay connected with families through this program by sending emails, journals and/or pictures!

Families may also send our Facility information about their child's attendance as well as completing the screening tool via text message.

Manitou Site's Fastoche number is

**1-204-817-6599**

## Services

- We walk school age and kindergarten children to and from school.
- We serve 2 snacks consisting of two or three food groups from Canada's Food Guide.
- Milk is provided with lunch.
- Wheelchair accessible and we accept children with additional support needs.

## Cost

### Infant ~ 3 Months-2 Years

Half Day (0-4 Hours)	\$15.00
Full Day (4-10 Hours)	\$30.00
10 + Hours	\$45.00

### Preschool ~ 2-5 Years

Half Day (0-4 Hours)	\$10.40
Full Day (4-10 Hours)	\$20.80
10 + Hours	\$31.20

### Nursery School~ 3 &4 Years

Per Class	\$10.40
-----------	---------

### School Age ~ 6-12 Years

1 Slot (AM or PM)	\$6.15
2 Slot(AM and PM)	\$8.60
Half Day (0-4 Hours)	\$10.40
Full Day (4-10 Hours)	\$20.80
10 + Hours	\$31.20