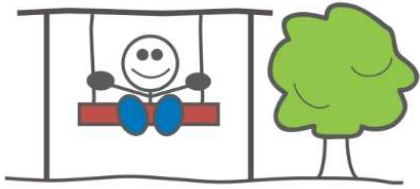


# Pembina Valley Child Care Centres Inc.



## Morden Site

5 Rampton Street

Morden, MB R6M 1V8

Phone: (204) 822-6663, Fax: (204) 822-4656

Email: [ndavison.pvccc@outlook.com](mailto:ndavison.pvccc@outlook.com)

[www.pembinavalleychildcarecentres.com](http://www.pembinavalleychildcarecentres.com)

**Executive Director:** Shuana Richards

Email: [srichards.pvccc@outlook.com](mailto:srichards.pvccc@outlook.com)

**Assistant Director:** Michele Hutchinson

Email: [mhutchinson.pvccc@outlook.com](mailto:mhutchinson.pvccc@outlook.com)

**Morden Site~Site Manager:** Nancy Davison

Email: [ndavison.pvccc@outlook.com](mailto:ndavison.pvccc@outlook.com)

**Manitou Site ~ Site Manager:** Hailley Mitchell

Email: [hmitchell.pvccc@outlook.com](mailto:hmitchell.pvccc@outlook.com)

**Hive Site ~ Site Manager:** Sidney Cobb

Email: [scobb.pvccc@outlook.com](mailto:scobb.pvccc@outlook.com)

At Pembina Valley Child Care Centres Inc., we strive to provide a safe, caring learning environment for children, staff, and families. We believe in equality and respect diversity.

## Morden Site

- Established in 1981. We provide care for approximately 150 families per year.
- Amalgamated in April 2001 with Pembina Valley School Age Day Care Centre.
- Amalgamated in January 2012 with Morden Community Child Care Centre.
- Licensed for 112 spaces, ages 12 weeks to 10 years.
- Open from 6:00 am - 11:00 pm Monday - Friday.
- Open year-round. Christmas holidays, in services etc.
- Subsidy available for those who qualify.
- Receipts issued for income tax purposes.

### Philosophy

Children learn and grow by exploring a stimulating environment and are provided with warm, caring individuals to offer guidance as well as creative and collaborative programming.

Early childhood should be a time of wonder, warmth, security, exploring and discovering. All children are creative and receptive; the educators strive to nurture and encourage these qualities in the children who attend our program.

## Family Orientated

You are the most important person in your child's life. To develop meaningful parent-caregiver relationships and to meet your child's needs as fully as possible, we offer you the following:

- Educators will initiate and welcome regular communication about favourite activities, new friends, and milestone accomplishments.
- Parent/Child conferences offered every June to discuss your child's developmental progress.
- Open door policy - You can come and visit anytime your schedule permits, including field trips, and holiday celebrations.
- Enrolment preference is given to those who have siblings already enrolled.
- Volunteer opportunities are available on our Parent Board of Directors.

### Mission Statement

It is our purpose to provide an atmosphere that encourages social, emotional, physical, and intellectual growth and development of the child as a whole. We strive to provide quality care and learning opportunities for children of working parents and students, children with additional support needs, and those who use the Centre for respite, socialization, or experience.

## Infant Room

We are licensed for 8 infants with a ratio of 1:4. Infants are classified as children from the ages of 12 weeks to 2 years. We provide an enriched learning environment for infants by providing developmentally appropriate toys, books, activities, and songs

## Toddler Room

We have 12 toddler spaces with a ration of 1:6. Toddlers are classified as children from 2-3 years of age. We provide a developmentally appropriate learning environment including story time, science, activities, artwork, special community visitors and gross motor activities.

## Preschool Room

We have space for 16 preschool children with a ratio of 1:8. Preschool children are classified as children 3 to 4 years of age. We provide a developmentally appropriate learning environment including story time, science, activities, artwork, special community visitors and gross motor activities.

## Pre-Kinder Room

We have space for 18 pre-kindergarten children with a ratio of 1:9. Pre-kindergarten children are classified as children aged 4 -5 years of age. We provide a developmentally appropriate learning environment including story time, science, activities, artwork, special community visitors and gross motor activities.

## Kindergarten Room

We have space for 20 kindergarten children. We provide developmentally appropriate activities and field trips.

## School Age Room

We have space for 38 school age children with a ratio of 1:15. School age children are those who are aged 6 years to 12. Our school age program offers before and after school care with exciting developmentally appropriate activities.

We have an extensive summer program, providing field trips, tours, movies, hot lunches, and bowling. All field trips and lunches are optional with an additional charge ranging from \$2.50-\$5.00.

## Services

- We serve 2 snacks consisting of two or three food groups from Canada's Food Guide. We make accommodations for children with allergies or special snack requirements.
- Milk is provided with lunch.
- Wheelchair accessible and we accept children with additional support needs.

## Fastoche

Our Child Care Facilities utilize a program called 'Fastoche'. Our educators stay connected with families through this program by sending emails, journals and/or pictures!

Families may also send our Facility information about their child's attendance as well as completing the screening tool via text message.

Morden Site's Fastoche number is

**1-204-817-6598**

## Cost

### Infant ~ 3 Months-2 Years

Half Day (0-4 Hours)	\$5.00
Full Day (4-10 Hours)	\$10.00
10 + Hours	\$15.00

### Toddler & Preschool ~ 2-5 Years

Half Day (0-4 Hours)	\$5.00
Full Day (4-10 Hours)	\$10.00
10 + Hours	\$15.00

### School Age ~ 6-12 Years

1 Slot (AM or PM)	\$6.15
2 Slot (AM and PM)	\$8.60
Half Day (0-4 Hours)	\$10.40
Full Day (4-10 Hours)	\$20.80
10 + Hours	\$31.20

## LAUGHTER

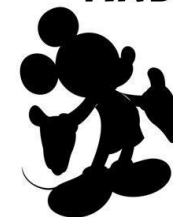
*is timeless*

## IMAGINATION

*has no age*

## AND DREAMS

*are forever*



*-Walt Disney*