



“Milkweeds” Series No. 1 (unique handprints)

by Cindy Kolling (16x20”)



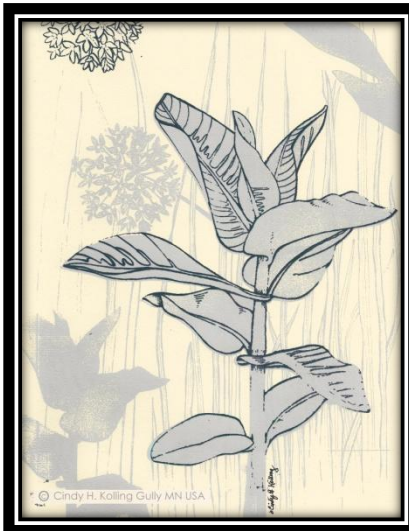
**Milkweed1** 1/1/ series 1 **sold**



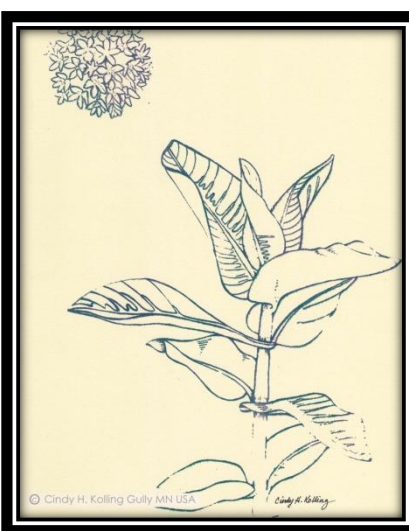
**Milkweed2** 1/1/series 1



**Milkweed3** 1/1/series 1



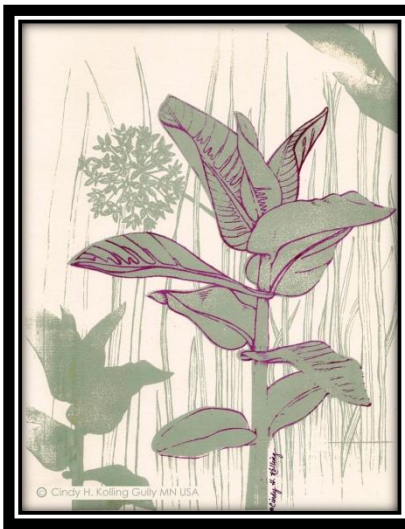
**Milkweed4** 1/1/series 1 **nfs**



**Milkweed5** 1/1/series 1



**Milkweed6** 1/1/series 1



**Milkweed7** 1/1/series 1 **artist reserved** **Milkweed8** 1/1/series 1 **sold** **Milkweed9** 1/1/series 1



**1 Milkweed10** 1/1/series 1 **sold** **Milkweed11** 1/1/series 1 **Milkweed12** 1/1/series 1

© Cindy Kolling Gully MN - ALL RIGHTS RESERVED

## Milkweed Handprints by Cindy H.Kolling, Gully Minnesota.

This is the first series of 12 different hand-prints of native plants originating from a pen & ink drawing by Cindy Kolling. After deciding to start with the milkweed, and while continuing a process of developing and experimenting in new hand-printing techniques, this series of 12 different prints has been produced. No two are alike. There are no more. These original prints have been stored in high quality digital files for possible reproduction later, (or in use such as this flyer) but the original handprint is unique and unable to be done the same again. The different methods of presentation in varying colors

and techniques are part of the process of “Growing My Art”. It is also intended to bring awareness to looking at ordinary aspects of daily life in fresh ways. Have you seen a Milkweed today?

These prints are for sale to interested buyers. The print will be available in a 16 x 20 studio mat & frame after all of the season’s public showings are completed. Price is \$790 per print. Titled “Milkweed 1-12”; Signed & Numbered & Dated as Unique Print 1 of 1 in series 1.

Future projects featuring other native plants are planned.

Please contact the artist with questions, comments, or intentions of purchase or requests to exhibit (Sold pieces will be kept for showing the whole series through this season if buyers are agreeable, after that only a partial series may be available for exhibit- depending on whether the buyer is agreeable to loaning it back. Artist retains all reproduction rights.)

Cindy Kolling

PO Box 101

Gully MN 56646

218-268-4396 [cindyk@gvtel.com/](mailto:cindyk@gvtel.com)

Thanks for looking! Please comment on your favorite!

*“I want to make new art that invites viewers to expand their participation in life by developing and sharing appreciation and to consider our local world with fresh insight.”*

*Artist Cindy Kolling*

The Common Milkweed, native plant, has long been considered a weed. In recent years, much attention has been given to the milkweed. It has been learned that one of the most beautiful and important pollinators, the monarch butterfly, is dependent on the

milkweed. The monarch lays its eggs on the underside of the milkweed leaf, and after several growth stages (instars), a caterpillar emerges. This caterpillar will later turn into a monarch butterfly. But while it is growing, it needs to eat. The only food that a monarch caterpillar eats is... yes... you guessed it: milkweed leaves. Without the milkweed, the adult monarchs will not emerge.

“Is the Common Milkweed a weed... or is it an essential part of the ecosystems and interdependence of the intertwined elements of nature?”

As more is learned about the Common Milkweed and it's part in nature, we are less inclined to think of it as a weed, but rather consider its importance as a host plant essential to the survival of the Monarch Butterfly. Without the milkweed, we'd have no Monarchs, without the Monarchs, we'd lose an important pollinator which ensures the continuation and survival of many of our plants, including some that we may use for food.

The Common Milkweed might be considered by each of us as individuals as we co-exist and share our world: Are we a weed or are we an integral part of our natural progression... essential to the survival of a species... maybe our own?



**Your Minnesota Artist's Profile: Cindy Kolling - Gully, Minnesota**  
Owner of Kolling Cards and Things Made Here!™

Artist owned business  
sustainably serving you since 1986  
from rural Gully, in northwestern Minnesota.

Carefully researched, hand-drawn original designs; green  
production – sustainable approach to business and life.

*“Love to see people find “local flavor” ... places, people and things that reflect local culture and style, history, heritage, nature, geography, folklore etc. Also love to see places that have become a part of local culture just by being there. Love to see when stores reflect and celebrate their locale.*

*Love to see people “Get Out-There” and see and do!*



## **Artist Statement: Cindy Kolling, Gully Minnesota**

“I share visual interpretations from “Out-There!”™

I am not a medium purist.

I often work on carefully selected recycled fiber paper with quiet colors of hand-screened inks.

These originals begin with hand-drawn monochrome drawings or paintings from a mix of subtle mediums (including, but not limited to, pencil, technical pen, water color, charcoal and color pencil).

They are hand-printed with a thermo silkscreen. Each print is an original: Kolling Cards note cards and journals are these actual originals.

My hand-print process is a non-purist joining of current technologies with very early print making techniques, and some from in-between. I like mixing old and new concepts to create something fresh. It is the result of experimenting with what one has, what one knows, and where one wants to go. The process is a work in progress..... thanks for joining the journey!

Carefully researched nature, history, heritage and science is the base for my interactive products intended to enhance your experiences in those areas.

Not usually limited in specific edition numbers, the hand printing process itself does limit the quantity through logistics. The larger wall print series are limited to 1/1 unique print per series of 12. My art is meant to be enjoyed by those who appreciate natural details, and to encourage new awareness and reflection about taking care of our surroundings.

Thank you for slowing down a little, to disconnect and reconnect!”

*Your artist, Cindy Kolling*

**Let's get out there and enjoy!**

© Cindy Kolling Gully MN - ALL RIGHTS RESERVED