



# THE PUBLIC WORKS EXPERIENCE

ABOVE | BELOW | BEYOND

 YOU DEPEND ON US.  
NOW WE DEPEND ON YOU.

## WHO WE ARE

At The Public Works Experience, we dive deep into the bedrock of our communities, illuminating the intricate systems and dedicated professionals that keep our world turning. Public works operate ceaselessly, delivering crucial public health, environmental, and civil services to communities, both sprawling and intimate. Every moment of every day, these systems are hard at work, ensuring a seamless quality of life for all.

Above our heads, below our feet, and beyond our immediate surroundings, the reach of public works is profound. It's a testament to their efficiency and importance that many of us rarely notice their operations. Yet, without their tireless contributions, our daily lives would come to a standstill. Such essential yet overlooked wonders are the backbone of our civilizations.

The Public Works Experience exists to bridge this awareness gap. We are not just a repository of information but a vibrant beacon, dedicated to showcasing the monumental importance and inherent value of public works on a global scale. Through our efforts, we aim to elevate the appreciation of these unsung heroes, reminding everyone of the vital role they play in our world.

## OUR MISSION

Our mission is to demonstrate the value of and importance of Public Works through engaging exhibitions and educational programs.

## OUR VISION

Our vision is to provide increased awareness of Public Works, and the acknowledgment of the vital nature of infrastructure in sustaining our quality of life, health, and environment.





# THE PUBLIC WORKS EXPERIENCE

ABOVE | BELOW | BEYOND

## WHAT WE DO

While the modern world thrives on the infrastructure of public works, many remain oblivious to the intricate functions underpinning daily life. This oversight often results in diminished support and investment in these pivotal services. The Public Works Experience (PWE) addresses this by offering a vivid educational voyage into public works, turning abstract ideas into tangible experiences — from the light switch's mechanics to the pathways of tap water. Moreover, PWE serves a dual purpose: fostering public appreciation which in turn bolsters support for vital infrastructure projects and illuminating a spectrum of career opportunities, aiming to nurture a new wave of professionals dedicated to fortifying the future of the public works industry.

## SUCCESS AND IMPACT

The Public Works Experience is a hub of engagement, education, and enlightenment in the realm of public works. Over the years, our impact has been multifaceted, touching various aspects of the community and leaving a lasting imprint.

One of our flagship events, the Public Works Celebration featuring Big Trucks Day, has witnessed exponential growth year-on-year. Designed to offer an immersive, hands-on experience, this event truly brings the essence of public works to life, engaging all five senses. Visitors, especially children, revel in face-painting activities, interactions with heavy machinery, and opportunities to witness the colossal trucks that make public works so iconic. We also take the opportunity to highlight the unsung heroes who keep our urban life flowing seamlessly. A broad spectrum of vehicles, from public health to safety, become the day's attractions. Top state officials, food vendors, and even private providers amplify the event's significance by their presence. As sponsors and participants, they underscore the collaborative spirit essential for the success of public works. The event culminates with interactive experiences such as honking cement mixer horns, witnessing crane operations, and climbing aboard a backhoe and buses.

Beyond annual events, every second Saturday, The Public Works Experience (PWE) opens its doors to showcase the pumping station's transformation from steam to electricity. Our space not only educates but also serves as an event hub for various groups amidst our captivating exhibits.

The stories shared by our visitors drive our mission. Recollections of past visits and the pride of introducing new generations to the PWE illuminate the significance of public works in our lives. Guests depart with a renewed respect for these intricate systems, recognizing their value in daily life.

# THE PUBLIC WORKS EXPERIENCE

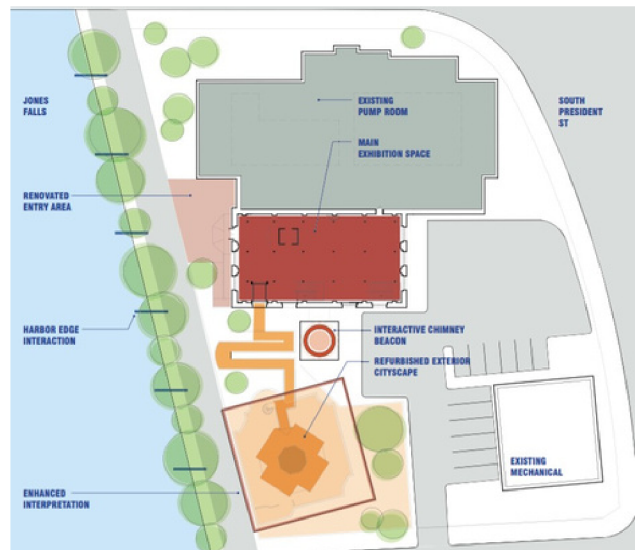
ABOVE | BELOW | BEYOND

## A VISION FOR THE FUTURE

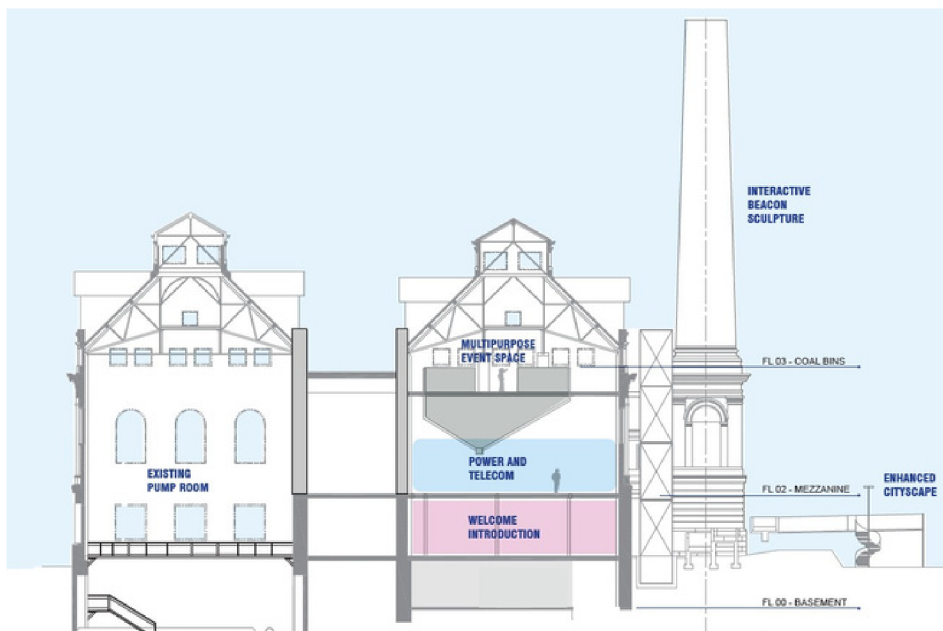
Nestled in Baltimore's vibrant Inner Harbor, adjacent to historic Little Italy and the bustling Harbor East, the Public Works Experience is more than just a museum. It's an immersive journey of discovery. Our strategically sited entrance, exterior displays, and captivating activity markers are a testament to our commitment to educating and engaging curious minds.

## OUR PLAN

Our plan is to revitalize the existing facility, introducing hands-on displays that immerse the general public in the world of public works. Set within the backdrop of a functional sanitary pumping station—a century-old testament to the indispensability of public works—the narrative of the Public Works Experience (PWE) echoes the shared everyday experiences of us all. Details of our vision are illustrated in the provided diagram and further elaborated in the subsequent pages.



*Proposed rendering showing exterior layout.*



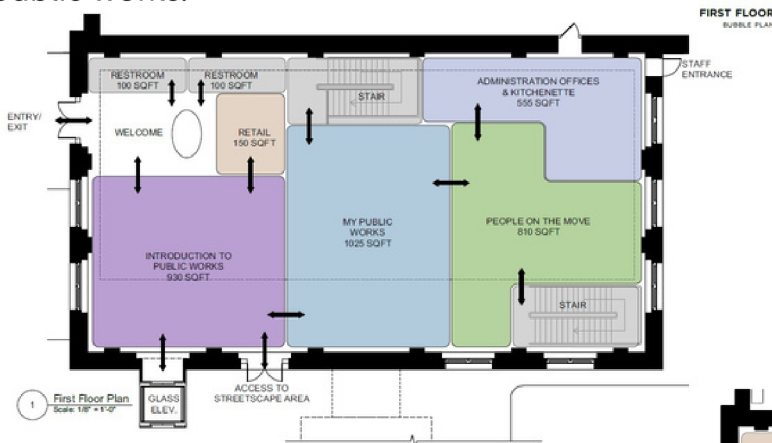
# THE PUBLIC WORKS EXPERIENCE

ABOVE | BELOW | BEYOND

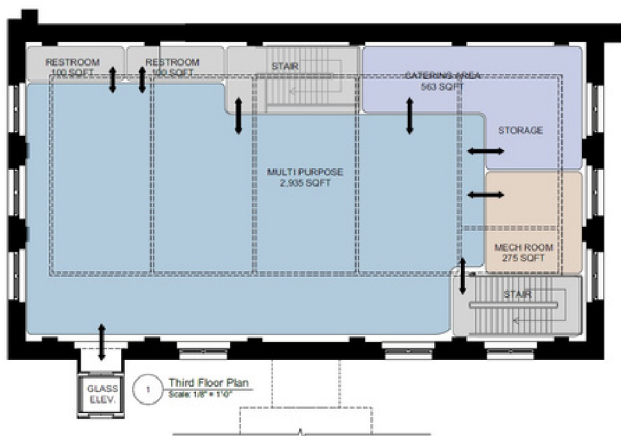
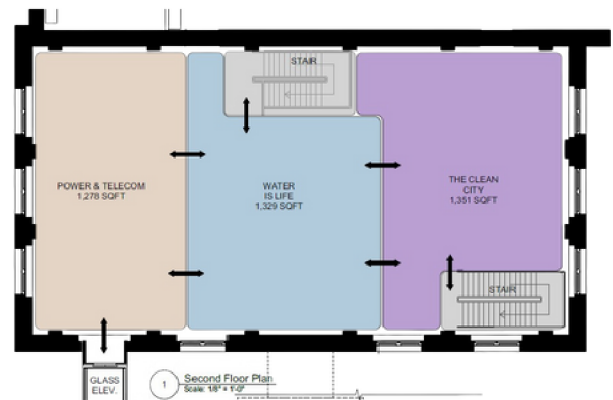
## VISITOR EXPERIENCE

Through STEAM-educational offerings, engaging exhibitions, and interactive programs, the PWE will demonstrate the daily connections we all have to public works.

Interactive displays will engage the visitor with facts and figures about the services available to them through Public Works, in their neighborhood, town, or city. The displays are organized into four distinct themes all celebrating the different industries within public works.



These diagrams show how we intend to cover all aspects of public works in our displays. The third floor will be an open events space that can be used in a variety of ways, including job fairs, training, seminars and private rentals.



# THE PUBLIC WORKS EXPERIENCE

ABOVE | BELOW | BEYOND

## PEOPLE ON THE MOVE

Our world's intricate mobility networks are rapidly evolving, expanding our travel horizons from "Point A" to "Point B". From highways to airports, these lifelines connect every corner of our lives. The Public Works Experience illuminates the monumental task of crafting a resilient, efficient, and interconnected transport tapestry for our future.



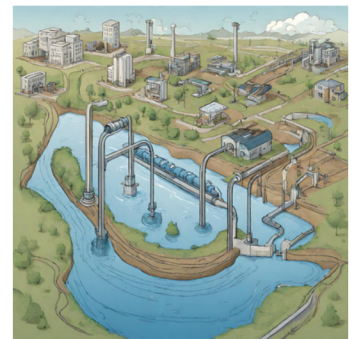
## POWER TO THE CITY

From the light that brightens our rooms to the calls that connect us, every moment is powered by an intricate web of services like electricity, gas, and telecommunications. The Public Works Experience unveils the innovation behind these systems, emphasizing their shift towards sustainability, reliability, and comfort that defies nature's extremes.



## WATER IS LIFE

Water is our lifeline, vital for us and every living being on our planet. Every drop narrates a story of sustenance, growth, and life's continuity. Ensuring its purity and availability is a paramount duty. As we confront the challenges of finite resources, public works leaps into action, engineering solutions that guarantee safe water and sustainable environments for all.



## THE CLEAN CITY

Today's cities shimmer with a cleanliness that was once unimaginable. While challenges persist globally, the modern metropolis stands as a testament to advancements in hygiene and environmental care. The Public Works Experience spotlights the intricate machinery that maintains this urban gleam and emphasizes the collective responsibility we hold in preserving it.



# THE PUBLIC WORKS EXPERIENCE

ABOVE | BELOW | BEYOND

## ECONOMIC IMPACT

The Public Works Experience will directly and indirectly impact the local economy in several positive ways.

### EMPLOYMENT

Salaries and employment costs will add over \$350,000 directly through pay checks and tax revenues.

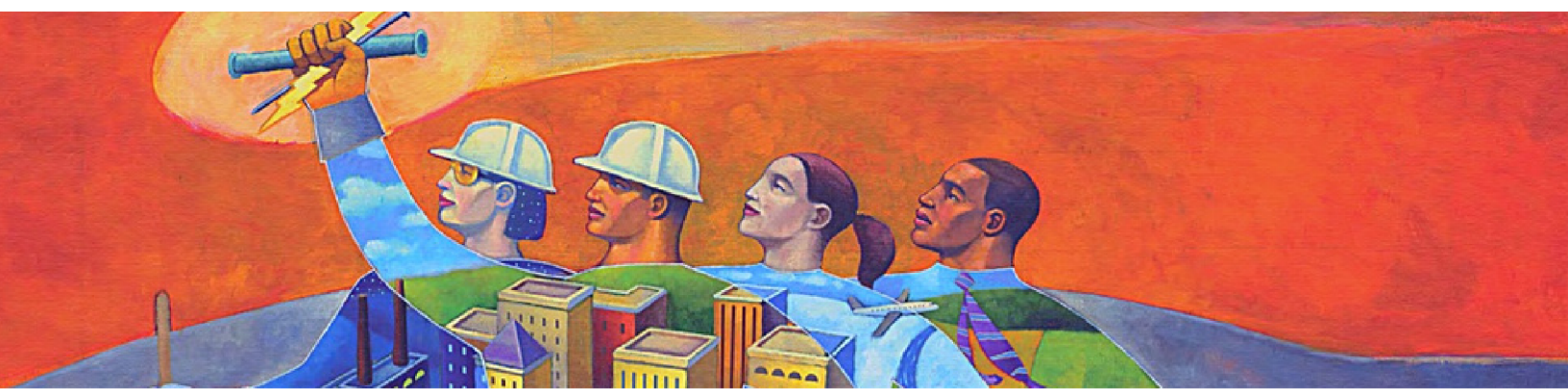
### EVENTS AND RENTALS

Planned events and rentals will support local suppliers such as catering, rentals, florists, and entertainment.

### TOURISM

Millions of people across the country are employed in Public Works, with tens of thousands living in the local region. These civil servants will have a unique curiosity to see the Experience, and likely plan a day visit to Baltimore's inner harbor.

The Public Works Experience will give locals and visitors alike another reason to spend more time in downtown Baltimore.



# THE PUBLIC WORKS EXPERIENCE

ABOVE | BELOW | BEYOND

## POTENTIAL FOR PARTNERSHIPS

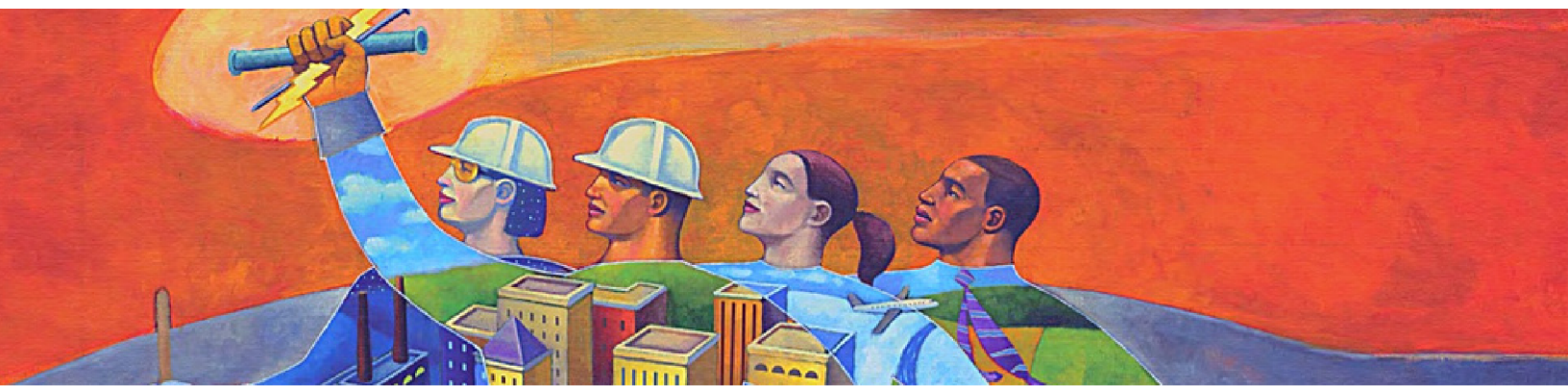
Downtown Baltimore is an ideal location for the Experience: there is steady visitor traffic, enhanced by frequent large conventions, major sporting events, and numerous attractions. The Harbor East neighborhood continues to grow with upscale, mixed use high rises under construction. The downtown location also supports partnerships with nearby, STEM-focused attractions. These include the National Aquarium, the Maryland Science Center, Port Discovery, Reginald Lewis Museum of African American History and Culture, and the Baltimore Museum of Industry.

Our goal is to collaborate with these attractions, rather than try to pull visitors away from them. We will work with them, and with the Baltimore Visitor Center to develop programs that discount a visit to the Public Works Experience with proof of admission to the other venues.

## YOUR INVESTMENT, OUR IMPACT

Our goal is to raise \$10 million to renovate and build our facility and install the hands-on activities that will educate the public and inspire future generations about the benefits of public works and the many solid job opportunities the industry offers.

In order to succeed, we must increase our square footage, which means installing additional floors vs. the current single-floor venue in place. With more space, we can support engaging interactive exhibits that tell our story, host more students, and larger event rentals, to reach more people each day. This effort comes with a steep price tag, on top of the cost of designing and installing the envisioned displays. But we know it will be worth it. We all benefit from public works - without even realizing it - and the public works story is an important one to be shared by everyone.



# THE PUBLIC WORKS EXPERIENCE

ABOVE | BELOW | BEYOND

## OUR FOUNDING MEMBERS

A/I/DATA

American Public Works Assoc., Mid-Atlantic Chapter

American Society of Civil Engineers, Maryland Section

EWRI - Chesapeake Bay

American Society of Highway Engineers, Chesapeake Section

American Water Works Association

BGE

Black & Veatch

Bowen Engineering Corporation

Mr. and Mrs. Brian T. Pelisek

Century Engineering

Chesapeake Section AWWA

David Openshaw, PE and Lily Openshaw, PE

Duke's Root Control, Inc.

Edward and Patricia Bouwer

Gannett Fleming, Inc.

Gray & Son, Inc.

Harford County Department of Public Works

Hazen and Sawyer

HDR, Inc.

HNTB Corporation

Johnson, Mirmiran, and Thompson

KCI Technologies

Kiewit Corporation

Ligon and Ligon

Margaret Byars Martin, PE

McCormick Taylor

Mott MacDonald

Mueller Company

Navarro and Wright

Pascale Stevens LLC

Pennoni and Associates

Mr. and Mrs. Raymond Buscarini

Patricia A. and James N. Langley

RJN Group

Rummell, Klepper, and Kahl

Sheladia Associates, Inc.

Spiniello Companies

Stantec

Straughan Environmental, Inc.

STV, Inc.

Thomas J. Iacoboni

Volkert, Inc.

Wallace Montgomery

Water and Waste Operators Assoc., MD, DE, and DC

The Whiting-Turner Contracting Company

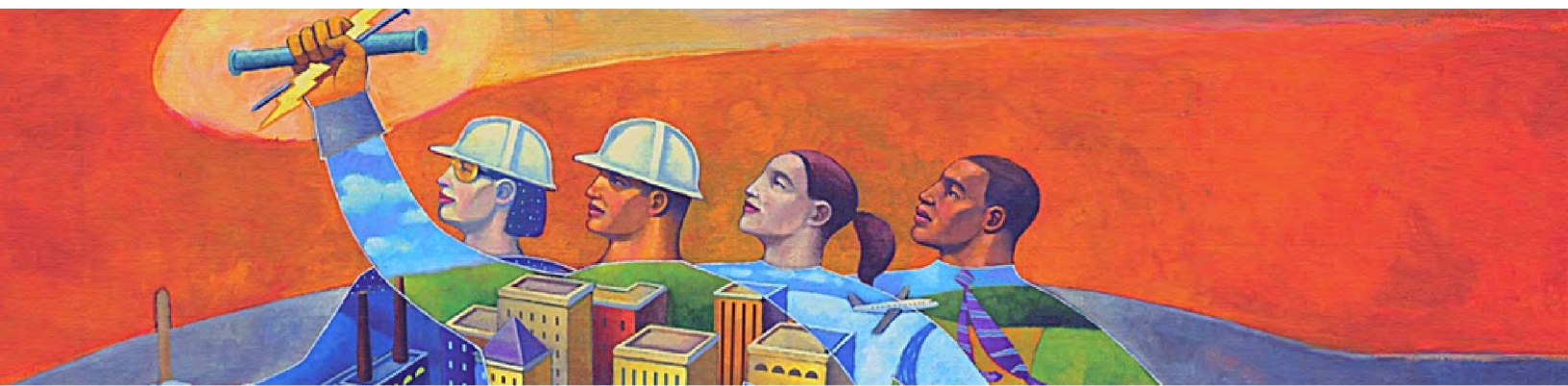
Whitman, Requardt, and Associates

Whitney, Bailey, Cox and Magnani

WSP

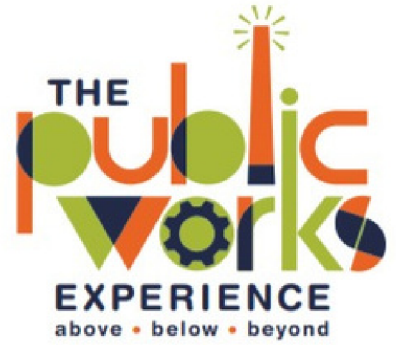
**Special thanks to our Benefactor, Baltimore City DPW.**

**We are nothing without you!**



# THE PUBLIC WORKS EXPERIENCE

ABOVE | BELOW | BEYOND



## BOARD OF DIRECTORS


David Openshaw, Chair, Ligon and Ligon  
Ray Buscarini, Treasurer, Whiting-Turner (retired)  
Cristel Sias, Secretary, Everyday Consulting

Matthew Brazis, Whiting-Turner  
Andy Cooper, Whitman, Requardt and Assoc.  
Steven Hawtof, Gannett Fleming, Inc.  
James Langley, CPE, Inc  
Bill Leibbrandt, Gray and Son, Inc.  
Richard Luna, Interim, Director, Baltimore Department of Public Works  
Margaret Byars Martin, PE, MDOT, State Highway Administration (retired)  
Gabriel Martino, Granite Works  
Kraig Moodie, RJN Group  
Dave Montgomery, Sr., Baltimore Department of Public Works (retired)  
Lily Openshaw, Chesapeake Blue and Green, LLC  
Odessa Phillip, Assedo Consulting  
Howard Stevens, Pascale Stevens, LLC  
Denise Watkins, Rummel, Klepper and Kahl

## CONTACT US

Rachel Ellis, Executive Director  
[exdir@pwexperience.org](mailto:exdir@pwexperience.org)

751 Eastern Ave, Baltimore,  
Maryland 21202, United States

 facebook

 Twitter

 Instagram

